



# Zip's Truck Equipment

316 W. Milwaukee Street  
 New Hampton, Iowa 50659  
 Phone: 641-394-3166  
 Fax: 641-394-4044



## Visual Inspection

Page: 1 of 6

**Customer:** \_\_\_\_\_  
**Address:** \_\_\_\_\_  
**Serial No:** J11929  
**Equipment Type:** Heavy Duty Wrecker  
**Event Performed:** Heavy Duty Wrecker Inspection  
**Result:** Pass  
**Inspected By:** \_\_\_\_\_


**Division:** \_\_\_\_\_  
**Location:** New Hampton, IA  
**Phone:** \_\_\_\_\_  
**Reference #:** D3117FGB12575  
**Order #:** \_\_\_\_\_  
**Inspected On:** 06/27/14 9:10 AM CDT  
**Total Score:** \_\_\_\_\_  
**Comments:** \_\_\_\_\_

Iowa Inspector Shop

### Heavy Duty Wrecker-J11929

\* Year: 1976  
 \* Make: International  
 \* Model: Pay star 5000  
 \* Engine Make: Cummins  
 \* Engine Model: 335  
 \* Fuel Type: Diesel  
 \* Transmission Type: Manual  
 \* Transmission Model: 10 Speed  
 \* Odometer Reading: 26,710  
 \* GVW: 66,000#  
 \* Wheel Base: 288"  
 \* Cab Color(s): Blue  
 \* Body Make: Holmes  
 \* Body Model: 850  
 \* Wrecker Body/Pylon/Boom Color (s): Blue/Black  
 \* Brake Type: Air  
 \* Air Compressor - Brake System: Yes  
 \* Air Conditioning: No  
 \* Driver Seat: Cloth Air Ride High Back  
 \* Tire Size - Front: 445/65R22.5  
 \* Tire Size - Rear: 11R22.5  
 Tire Size - 2nd Rear: 11R22.5

Engine Check	Status	Comments
Ability to Start	Starts Normally	

Engine Check	Status	Comments
Engine Blow-By Check	No Noticeable Blow-By Issue	
Engine Oil Leaks		-It has an oil leak left side of motor it is dripping Small oil leak by luber finer.
		
Engine Noise	Engine sounds are normal	
Engine Warning Lights	No Check Engine Lights are on	
Engine Water Leaks	No Water Leaks	-Water level is low also check to -30
Performance	Smokes When Cold But Runs Well Warm	
Engine Mounts		-Left rear mount missing rubber
Other Engine Notes		
Engine Brake		
Batteries	Status	Comments
Condition of Cables	Corroded Need Cleaning	
Condition of Batteries	In Good Condition	-Lid for battery box needs latches Battery's need hold down bkt.
Cooling System	Status	Comments
Radiator	In Good Condition	
Fan	In Good Condition	
Fan Clutch		

Owner: \_\_\_\_\_

Location: New Hampton, IA

Cooling System	Status	Comments
Fan Shroud	In Good Condition	
Water Hoses	In Good Condition	
Fan Belt		-Belts are old and weather checked plus they are loose
Other Cooling Condition Notes		-Water is low
Automatic Transmission Check	Status	Comments
Transmission Operation		
Other Transmission Notes		
Manual Transmission Check	Status	Comments
Transmission Shifting		-Need to test drive to check
Clutch Operation	Operates Normally	
Throw-Out Bearing	Operates Normally	
Transmission Noise	Operates normally	
Other Transmission Notes		-PTO hits frame on right side
Clutch Brake	Operates Normally	
Overall Body Condition	Status	Comments
Overall Condition	Poor	
Other Overall Body Condition notes		-Cap has rust holes under left door Both cab corners rust holes Rust above windshield

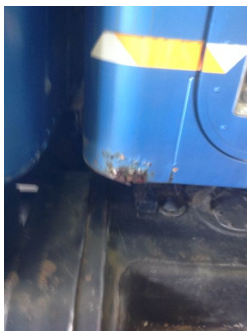
Overall Body Condition	Status	Comments
		

Cab Exterior	Status	Comments
Hood	Good Condition	-Needs one rubber latch
Right Fender	Good Condition	-Rubber seal missing Right spot mirror broke
Left Fender	Good Condition	-Rubber seal falling off
Grille	Chrome Peeling	
Back of Cab	Rusted	-Rusted up by rain gutter
Driver Side Door	Good Condition	
Passenger Side Door	Good Condition	
Roof	Good Condition	
Other Cab Exterior Notes		
Fuel Tank Appearance	In Good Condition	
Entry Steps	In Good Condition	
Head-Light Doors	In Good Condition	
Battery Box	In Good Condition	
Driver Side Door Hinges (2) (2)	In Good Condition	
Passenger Side Door Hinges (2) (2) (2)	In Good Condition	

Glass Condition	Status	Comments
Windshield	Good Condition	
Driver Side Window	Good Condition	
Passenger Side Windw	Good Condition	
Back Window	Good Condition	
Other Glass Condition Notes		-Left vent window has rusty frame Right vent window has rusty frame plus latch is rusted off

Overall Interior Condition	Status	Comments
Overall Condition	Poor	
Other Overall Interior Notes		-Gauges are rusty it has open holes some knobs missing Shifter boot has a hole in it

Interior Condition	Status	Comments
Drivers Seat	Good Condition	-Air control bkt. Is loose
Passenger Seat	Needs Repair	-Needs more bolts it is loose
Seat Belts		-Seat belts are missing
Rear Seat		
Floor Mat		-Floor mat is missing
Instrument Cluster	Fair	
Dash	In Good Condition	
Door Panels		-Panels are missing



Owner: \_\_\_\_\_

Location: New Hampton, IA

Interior Condition	Status	Comments
Electric Door Locks		
Electric Windows		
Other Interior Condition Notes		-Gas pedal pad missing Left window crank knob loose Head liner has panel missing others are sagging down Dome light don't work
Air Vents	In Good Condition	
Door Handles	In Good Condition	-Left door arm rest torn
Other Interior Notes		
Door Seals		-Both door seals are bad
Windshield Wipers	Status	Comments
Wiper Arms	In Good Condition	
Wiper Blades		-Blades are bad
Washer Tank		-Tank looks good but has hoses missing
Washer Control Switch	In Good Condition	
Heating	Status	Comments
Heater Controls		-Most all heater controls don't work
Fan Motor		-Appears to work on high only
Heater		
Other Heat Notes		
Air Conditioning	Status	Comments
Overall Condition		-Air is unhooked up by motor but it appears to be all there
Air Conditioning Controls	Need Attention	
Electrical System-Chassis	Status	Comments
Interior lights	All Interior Light Operate	
Turn Signals		-Left front don't work Right front works but is falling off
Head Lights		-Left head light out
Alternator	Performs Normally	
Gauges		-Temp and Fuel gauges don't work
Dash Lights		-Some dash lights out
Cab Marker Lights		-Two lights out on top of cab Both fender marker lights don't work
Back-Up Lights		-There is no back up lights on rear of body
Back-Up Alarm	Doesn't Operate	
4-Way Flashers	Performs Normally	
Windshield Wipers	Perform Normally	
Other Electrical System Notes		
Cruise Control		
Engine Throttle		-You cannot pull the knob out to make it work.
Drive-Line	Status	Comments
U-Joints	In Good Condition	
Rear Differential	In good condition	
Transfer Case		
Other Drive-Line Notes		-Need to grease
Brakes	Status	Comments
Air Compressor	Leaking Oil	
System Air Leaks		-Air system leaks down Air on gauge goes over 120 Psi
Applied Brakes	Brake apply normally	

Brakes	Status	Comments
Brake Adjusters	In Good Condition	-Brake Adj. Need greased
Air Lines		-One air tank BKT. Is rusted off
Low Air Pressure Warning	Operates Normally	-It has a warning light only
Front Brake Drums		-Front drums look rusty but good it is hard to tell with out pulling the wheel and taking the drums off
Pusher Axle Brake Drums (2)		
Front Drive Axle Brake Drums (2) (2)		-Brake drums look rusty they appear to be in bad shape
Rear Drive Axle Brake Drums (2) (2) (2)		-They appear to be in bad shape
Front Brake Calipers		
Rear Brake Calipers		
Front Brake Linings	Under 50%	
Pusher Axle Brake Linings		
Front Drive Axle Brake Linings	Under 50%	
Rear Drive Axle Brake Linings (2)	Under 50%	
Emergency Brake	Performs Normally	
ABS Light		
Brake Pedal Pads		
Other Brake Notes		-You cannot see brakes or drums that good with out pulling the wheels and taking off the drums for a good look. Do it on all axles.
Air Dryer		
Wheels	Status	Comments
Front Axle Wheels	Wheel In Good Condition	
Pusher Axle Wheels		
Front Drive Axle Wheels	Wheel In Good Condition	
Rear Drive Axle Wheels (2)	Wheel In Good Condition	
Fronts Axle Nut and Studs	In Good Condition	
Pusher Axle Nut and Studs (2)		
Front Drive Axle Nuts and Studs (2) (2)	In Good Condition	
Rear Drive Axle Nuts and Studs (2) (2) (2)	In Good Condition	
Wheel Simulators Front Axle		
Wheel Simulators Pusher Axle		
Wheel Simulators Front Drive Axle		
Wheel Simulators Rear Drive Axle (2)		
Aluminum Wheels Front Axle		
Aluminum Wheels Pusher Axle		
Aluminum Wheels Front Drive Axle		
Aluminum Wheels Rear Drive Axle		
Wheel Hubs	Status	Comments
Front Wheel Seals	In Good Condition	
Pusher Axle Wheel Seals		
Front Drive Axle Wheel Seals	In Good Condition	
Rear Drive Axle Wheel Seals	In Good Condition	
Oil Filled Hubs Front Axle		
Oil Filled Hubs Pusher Axle		
Oil Filled Hubs Front Drive Axle		
Oil Filled Hubs Rear Drive Axle (2)		
Front Wheel Bearings	Not Checked	

Owner: \_\_\_\_\_


Location: New Hampton, IA

Wheel Hubs	Status	Comments
Front Drive Axle Wheel Bearings (2)	Not Adjusted	
Pusher Axle Wheel Bearings		
Rear Drive Axle Wheel Bearings	Not Checked	
Tires	Status	Comments
Front Axle	Tread is less than 50%	
Pusher Axle		
Front Drive Axle	In Excellent Condition 75% tread or Better	
Rear Drive Axle	In Excellent Condition 75% tread or Better	
Notes on Tires		-Front drive axle left side inside tire is flat We had the tire fixed 7/1/14
Exhaust System	Status	Comments
Manifold	In Good Condition	
Exhaust Tubing	In Good Condition	
Muffler	In Good Condition	
DPF System		
Emnsions Warning Light		
Exhaust Shield	In Good Condition	
Exhaust Stack	In Good Condition	
Exhaust Mounting Bracket	In Good Condition	
Frame	Status	Comments
Integrity of Frame	Severe Swelling Between Farnie and Liner	
Suspension	Status	Comments
Air Bags		
Air Leaks		
Air Lines		
Spring Packs	In Good Condition	-Front springs have rust between leaves
Front Spring Hangars	In Fair Condition	
Rear Spring Hangars	In Fair Condition	
Radius Arms		
Rear Suspension Bushings	In Good Condition	
Air Leveling Valve		
Steering and Front Axle	Status	Comments
Steering Pump	Operates Normally	
Steering Lines	In Good Operating Condition	
Steering Sector	In Good Operating Condition	
King Pins	In Good Condition	
Steering Shaft	In Good Condition	
Pitman Arm	In Good Condition	
Drag Link	In Good Condition	
Tie Rod	In Good Condition	
Toe in Check	Not Checked	
4x4 Hubs		
Fuel System	Status	Comments
Fuel Gauge	Doesn't Register at All	

Fuel System	Status	Comments
Fuel Tank	In Good Condition	
Fuel Fill	Fills Normally	
Fuel Lines	In Good Condition	
Fuel Filter	Not Replaced	
Glow Plugs or Exhaust Heater	Status	Comments
Glow Plug Operation		
Intake Manifold Heater		
Fluids	Status	Comments
Windshield Washer		-The tank has a hose missing there for it has no water
Engine Oil	Appears That It Needs to be Changed	
Radiator Anti-Freeze	Low	-Also it needs to be tested to - 30'
Transmission Fluid		-Need to check
Transfer Case Oil		
Front Drive Axle		
Rear Drive Axle		-Need to check
Battery Acid Levels	Not Checked	
Hydraulic Oil	Not Checked	
Brake Fluid		
Power Steering Fluid		-Need to check
Winch 1 Oil	Not Checked	
Winch 2 Oil		
Winch 3 (Above Cab) Oil		
Filters	Status	Comments
Water Filter	Original (Not replaced)	
Engine Oil Filter	Original (Not replaced)	
Transmission Oil Filter		
Fuel Filter	Original (Not replaced)	
Carrier Hydraulic System		
Air Cleaner Filter	Original (Not replaced)	-It looks dirty
Overall Wrecker Body Condition	Status	Comments
Overall Condition	Fair	
Wrecker Body Condition	Status	Comments
Body Sides Condition	In Good Condition	
Body Deck Condition	Has Minor Scratches Wear Marks	
Front of Body Condition	In Good Condition	
Body Side Condition	In Good Condition	
Side Rail Cap Condition (2)	In Good Condition	
Driver Side Tool Box 1 Condition	Rusty Floor - Usable	
Passenger Side Tool Box 1 Condition	Rust Holes in Floor	

Owner: \_\_\_\_\_

Location: New Hampton, IA

Wrecker Body Condition	Status	Comments
		
Tunnel Tool Box 1 Condition		
Tail-Board Condition		
<b>Power Take-Off</b>	<b>Status</b>	<b>Comments</b>
Operation		-There is two PTOs the cable one pulled hard.
Oil Leaks	Has Oil Leak	-Right side PTO hits frame and it also leaks
PTO Warning Light	Inoperative	
Shifting Mechanism		
Air Leaks		
<b>Hydraulic Pump</b>	<b>Status</b>	<b>Comments</b>
Oil Leaks	Oil Leaks at Pump	
Operation	Pump Operates Normally	
Pump Pressure	Appears to Operate Bed Normally - Not Tested	
Pump Flow	Not Tested	
<b>Controls &amp; Valve</b>	<b>Status</b>	<b>Comments</b>
Oil Leaks	No Oil Leaks	
Operation	Operates Normally	
Control Levers and Rods	In Good Condition	
Knobs	In Good Condition	
<b>Hydraulic System Hoses</b>	<b>Status</b>	<b>Comments</b>
Oil Leaks	In Operating Condition	
<b>Hydraulic System Leaks</b>	<b>Status</b>	<b>Comments</b>
Winch Hoses		
Boom Lift Cylinder Hoses	No Oil Leaks	
Boom Extension Cylinder Hoses	No Oil Leaks	
Wheel-Lift Tilt Cylinder Hoses		
Wheel-Lift Extend Cylinder Hoses (2)		
Wheel-Lift Up/Down Cylinder Hoses (2)		
Hydraulic Pump Hoses	No Oil Leaks	
Hydraulic Filter	No Oil Leaks	
Bed Lift Cylinders		
Extend Cylinder		
Wheel-Lift Tilt Cylinder		
Wheel-Lift Extend Cylinder		
Wheel-Lift Claw Cylinder Drivers Side		
Wheel-Lift Claw Cylinder Passenger Side		
<b>Cylinder Conditon</b>	<b>Status</b>	<b>Comments</b>

Cylinder Conditon	Status	Comments
Boom Lift Cylinder		-Left cly. has small rust pits right side has wiper seal coming out they do not drip oil.
Boom Extend Cylinder	Operates Normally	
Wheel-Lift Extend Cylinder		
Wheel-Lift Tilt Cylinder		
Wheel-Lift Lift Cylinder		
Wheel-Lift Lift Claw Cylinders		
Stiff Leg Cylinders	Operates Normally	-Right front out rigger has blown seal
<b>Pylon</b>	<b>Status</b>	<b>Comments</b>
Overall Condition		
<b>Winch</b>	<b>Status</b>	<b>Comments</b>
Oil Leaks	No Oil Leaks	
Free-Wheel Mechanism Winch 1		-Need to oil and get moving
Free-Wheel Mechanism Winch 2		-Need to oil and get it moving
Free-Wheel Mechanism Winch 3		
Housing Winch 1	In Good Condtion	
Housing Winch 2	In Good Condtion	
Housing Winch 3		
Operation Without Load	Performs Normally	
Operation Without Load Notes		
Test Operation Loaded		
Test Operation Notes		
Winch 1 Cable		-Both cables look good but they have cable clamps by the hooks
Winch 2 Cable		
Winch 3 Cable		
Cable Tensioners		
<b>Wheel-Lift</b>	<b>Status</b>	<b>Comments</b>
L-Arms/Scoops		
L-Arm Straps		
L-Arm Storage		
Driver Side Claw		
Driver Side Slide Tray		
Passenger Side Slide Tray		
Passenger Side Slide Tray Locks		
Driver Side Slide Tray Locks (2)		
Driver Side Front Stops (Vulcan)		
Passenger Side Front Stops (Vulcan)		
Driver Side L-Arm		
Passenger Side L-Arm		
Center Pivot Pin and Bushing		
Wheel-Lift Cross-Bar		
Pins and Bushings		
Extension Tube		
Outer Wheel-Lift Assembly		
Wheel-Lift Swivel Lock Pins		
Wheel-Lift Swivel Lock Pins (2)		
Main Pivot Pin for Tilting		
Wear Pads		
Fork Sets		
<b>Wrecker Electrical Systems</b>	<b>Status</b>	<b>Comments</b>

Owner: \_\_\_\_\_

Location: New Hampton, IA

Wrecker Electrical Systems	Status	Comments
Switch Panel		-No switch panel lights work there is some battery missing for them in the right side tool box. One L 2 light did work
Overall Wiring Condition	Exposed or Patched Wiring	
Bed Wiring Harness Condition		
Junction Boxes Condition	Exposed or Patched Wiring	
Marker Lights	Some Lights Inoperave	-No 3 ID light
Driver Side Turn Signals Upper	In Good Condition	
Passenger Side Turn Signals Upper	In Good Condition	
Driver Side Turn Signals Upper Lower	In Good Condition	
Passenger Side Turn Signals Lower	In Good Condition	
Extra Warning Lights		
Extra Clearance Lights		
UpperWork Lights	Inoperative	
Lower Work Lights	Inoperative	
Work Lights Mounted Near Winch	Inoperative	
Beacon Light 2	Inoperative	
Beacon Light 3		
Beacon Light 1	Inoperative	
Tow Light Plug at Tail-Board		-Missing
Tool Boxes	Status	Comments
Box Driver Side 1	Rusty but Usable	
Box Driver Side 2	Rusty but Usable	
Box Passenger Side 1	Rusty but Usable	
Box Passenger Side 2	Rusty but Usable	
Fenderettes	Status	Comments
Drivers Side		
Passenger Side		
Areas of Lubrication	Status	Comments
Lift Cylinder Pins	Appears Dry	
Tilt Cylinder Pins		
Wheel-lift Tilt Pin		
Wheel-Lift Cross-Bar Pivot Pin		
Wheel-Lift Extension Slide Pads		
Wheel-Lift Lift Tower Wear Pads		
Wheel-Lift Arm Pins and Bushings		
Chains	Status	Comments
Rear Safety Chains	Broken or Missing	
J-Hook Chains		
Tow Sling	Status	Comments
Sling Arms		-It has a truck hitch that needs some work also it needs chains
Sling Belts		
Top Lift Bar		
Lower Lift Bar		
Stiff Legs	Status	Comments
Leg Condition	In Good Condition	
Stiff Leg Pads	In Good Condition	
Body Condition	Status	Comments
Hand Rails		
Tool Box Lighting	In Need of Repair	

Body Condition	Status	Comments
Tool Box Doors		-Need to oil latches and adj.
Tool Box Door Latches and Locks	In Need of Lubrication	-Need to check locks
Boom Condition	Status	Comments
Boom Ends		-Needs to be greased
Cable Guides	In Good Condition	
Boom Condition	In Good Condition	
Cable Tie Backs		