



Zip's Truck Equipment

316 W. Milwaukee Street
New Hampton, Iowa 50659
Phone: 641-394-3166
Fax: 641-394-4044



Visual Inspection

Page: 1 of 6

Customer: _____

Address: _____

Serial No: J12743

Equipment Type: Light-Duty Tow Truck

Event Performed: Light Duty Wrecker Inspection

Result: Pass

Inspected By: _____

Division: _____

Location: _____

Phone: _____

Reference #: 1GDJK34192E219513

Order #: _____

Inspected On: 02/16/15 11:32 AM CST

Total Score: _____

Comments: _____

Iowa Inspector Shop

Light-Duty Tow Truck-J12743

* Year: 2002

* Make: GMC

* Model: 3500

* Drive Type: 4 x 4

* Engine Make: Duramax

* Engine Model: 6.6L

* Fuel Type: Diesel

* Transmission Type: Automatic

* Odometer Reading: 99,754

* Cab Trim Package: SLE

Remote Keyless Entry: Yes

* Cab to Axle: 60"

* Wheel Base: 141"

* Cab Color ONLY: Red

* Body Make: Jerr-Dan

* Body Model: H408S

* Body Serial Number: 97097419

Body Width: 86"

* Beacon/Lightbar Model: MX7000 Code 3 Flip Up

PTO Type: Clutch Pump

Switch Panel & # Of Switches: Switch Panel - 4

* Wrecker Body/Pylon Color: Red/Black

* Brake Type: Hydraulic

* Suspension Type: Spring

* Air Conditioning: Yes

* Radio: AM/FM/CD

* Driver Seat: Split Cloth w/Head Rests & Center Console

Windows: Power

Door Locks: Power

Window Deflectors: Yes

Cruise Control: Yes

Tilt Steering Wheel: Yes

Flooring: Rubber or Vinyl

Sunvisor: Yes

* Bumper: Push Bumper

Grille: Chrome

Front Tow Hooks: Yes 2

Cab Fenders: Fiberglass Fenderettes

Running Boards/Nerf Bars: Yes Running Boards

Mirrors: Below Eye Swing Out

Additional Mirrors: Convex Mirrors

Cab Roof Marker Lights: Yes

Tread Type Rear: Mud & Snow

* Tire Size-Front: LT225/75R16

Tire Depth-Front: 5/32"

* Tire Size-Rear: LT225/75R16

Tire Depth-Rear: 6/32"

* Tow Sling: Yes

of Winches: 1

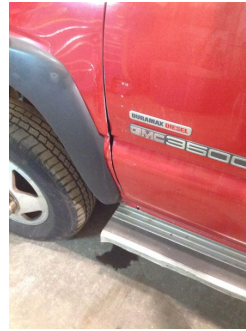
Owner: _____

Location: _____

Winch Brand:	Ramsey
Winch Clutch Release:	Yes
Pylon:	Standard Steel
Stop/Turn/Tail On Pylon:	Yes
Toolbox System:	LH
Dual Controls:	Yes
Rear Safety Chains:	Yes
Light Plug Ins:	Yes CR6
Hook Up Lights:	Yes
* Wheel Lift:	Yes with L-Arms
Wheel Lift Style:	Basic L-Arm Style
Aluminum Rail Caps:	Yes
Aluminum Dress Up:	Yes On Wrecker Top
Self Loading Dollies:	Yes
Dolley Crossbars:	Steel
Hand Rails:	Yes
J-Chains & #:	Yes 1 Set
Straps/Rachets:	Yes
Warning Triangle Kit:	Yes
Other Equipment:	1 Load Binder

Engine Check	Status	Comments
Ability to Start	Starts Normally	
Engine Blow-By Check	Has some Blow-By	
Engine Oil Leaks	Oil leak observed (see Comments)	-Slight leak around pan gasket,
Engine Noise	Engine sounds are normal	
Engine Warning Lights	Check Engine Light is on	-Airbag light is on
Engine Water Leaks	No Water Leaks	
Performance	Performs Normally	
Engine Mounts	In Good Condition	
Other Engine Notes		
Engine Brake		
Batteries	Status	Comments
Condition of Cables	In Good Condition	
Condition of Batteries	In Good Condition	
Load Testing	Pass	
Cooling System	Status	Comments
Radiator	In Good Condition	
Fan	In Good Condition	
Fan Clutch	In Good Condition	
Fan Shroud	In Good Condition	
Water Hoses	In Good Condition	
Fan Belt	In Good Condition	
Other Cooling Condition Notes		
Automatic Transmission Check	Status	Comments

Automatic Transmission Check	Status	Comments
Transmission Operation	Transmission Operates Normally	
Other Transmission Notes		-Wants to engage tow haul by itself, possibly from loose gear shifter
Manual Transmission Check	Status	Comments
Shifting		
Clutch Operation		
Throw-Out Bearing		
Transmission Noise		
Other Transmission Notes		
Overall Body Condition	Status	Comments
Overall Condition	Good	
Other Overall Body Condition notes		
Cab Exterior	Status	Comments
Hood	Good Condition	
Right Fender	Good Condition	-Small dent by headlight
Left Fender	Good Condition	-Fender and door rubbed each other at one time



Grille	In Good Condition	
Back of Cab	Good Condition	-Beat up a little



Driver Side Door	Good Condition	-Few minor scratches
Passenger Side Door	Good Condition	-Few minor scratches and dents
Roof	Good Condition	
Other Cab Exterior Notes		
Fuel Tank Appearance	In Good Condition	
Entry Steps		-Loose running boards
Head-Light Doors	In Good Condition	
Battery Box		

Owner: _____

Location: _____

Cab Exterior	Status	Comments
Driver Side Door Hinges	Worn - Should Be Replaced	-Needs to be replaced
Passenger Side Door Hinges	Worn - Useable	
Glass Condition	Status	Comments
Windshield	Good Condition	
Driver Side Window	Good Condition	
Passenger Side Windw	Good Condition	
Back Window	Good Condition	
Other Glass Condition Notes		
Overall Interior Condition	Status	Comments
Overall Condition	Fair	
Other Overall Interior Notes		
Interior Condition	Status	Comments
Drivers Seat	Fair Condition	-Some of the plastic trim is broken.
Passenger Seat	Good Condition	
Rear Seat		
Floor Mat	Good Condition	
Instrument Cluster	Good	
Dash	In Good Condition	
Door Panels	In Good Condition	-Bottoms on both doors loose
Electric Door Locks	Inoperative	-Need to see if it is fuse, switches, or lock mechanisms that don't work
Electric Windows	Operate Properly	
Other Interior Condition Notes		
Air Vents	In Good Condition	
Door Handles	In Good Condition	
Other Interior Notes		-Driverside door seal is torn near bottom of door, plastic trim on floor by door is broken, and headliner is coming down by door.
Windshield Wipers	Status	Comments
Wiper Arms	In Good Condition	
Wiper Blades	In Need of Repair	-Needs to be replaced
Washer Tank	In Good Condition	-Hose to passengers side broken
Washer Control Switch	In Good Condition	
Heating	Status	Comments
Heater Controls	In Good Condition	
Fan Motor	Excellent Condition	
Heater	Heats Appropriately	
Other Heat Notes		
Air Conditioning	Status	Comments
Overall Condition	In Good Operating Condition	
Air Conditioning Controls	In Good Condition	
Electrical System-Chassis	Status	Comments
Interior lights	All Interior Light Operate	
Turn Signals	Operate Normally	-Front right turn signal housing broken loose.
Head Lights	Head-Light Bulb Problem	-Left side low beam out
Alternator	Performs Normally	
Guages	All Gauges Perform Properly	

Electrical System-Chassis	Status	Comments
Dash Lights	Dash Lights Perform Normally	
Cab Marker Lights	Marker Lights Perform Normally	
Back-Up Lights	Operate Normally	
Back-Up Alarm	Doesn't Operate	-Needs new alarm
4-Way Flashers	Performs Normally	
Windshield Wipers	Perform Normally	
Other Electrical System Notes		
Cruise Control	Operates Normally	
Engine Throttle	Operates Normally (Note Type)	
Drive-Line	Status	Comments
U-Joints	In Good Condition	
Rear Differential	In good condition	
Transfer Case	Shifts and Engages Normally	
Other Drive-Line Notes		
Hangar Bearings	In Good Condition	
Brakes	Status	Comments
Air Compressor		
System Air Leaks		
Applied Brakes		
Brake Adjusters		
Air Lines		
Low Air Pressure Warning		
Front Brake Drums		
Pusher Axle Brake Drums		
Front Brake Calipers	In Good Condition	
Front Drive Axle Brake Drums		
Front Brake Linings	60 or Better	
Rear Drive Axle Brake Drums		
Rear Brake Calipers	In Good Condition	
Pusher Axle Brake Linings		
Front Drive Axle Brake Linings		
Rear Drive Axle Brake Linings	50% or Better	
Emergency Brake	Doesn't Hold Properly - Needs Repair	-Doesn't hold at all
ABS Light	Showing Normal (Not on)	
Brake Pedal Pads	Missing	-Missing
Other Brake Notes		
Air Dryer		
Wheels	Status	Comments
Front Axle Rims/Wheels		
Pusher Axle Rims/Wheels		
Front Drive Axle Rims/Wheels		
Rear Drive Axle Rims/Wheels	Wheel In Good Condition	
Fronts Axle Nut and Studs	In Good Condition	
Pusher Axle Nut and Studs		
Front Drive Axle Nuts and Studs (2) (2)		

Owner: _____

Location: _____

Wheels	Status	Comments
Rear Drive Axle Nuts and Studs	In Good Condition	
Wheel Simulators Front Axle		
Wheel Simulators Pusher Axle		
Wheel Simulators Front Drive Axle		
Wheel Simulators Rear Drive Axle		
Aluminum Wheels Front Axle	In Good Condition	
Aluminum Wheels Pusher Axle		
Aluminum Wheels Front Drive Axle		
Aluminum Wheels Rear Drive Axle		
Wheel Hubs	Status	Comments
Front Wheel Seals	In Good Condition	
Front Drive Axle Wheel Bearings		
Front Wheel Bearings	Not Adjusted but No Issue Visible	
Pusher Axle Wheel Seals		
Front Drive Axle Wheel Seals		
Oil Filled Hubs Front Drive Axle		
Rear Drive Axle Wheel Seals	In Good Condition	
Oil Filled Hubs Front Axle		
Pusher Axle Wheel Bearings		
Oil Filled Hubs Pusher Axle		
Oil Filled Hubs Rear Drive Axle		
Rear Drive Axle Wheel Bearings	Not Adjusted but No Issue Visible	
Tires	Status	Comments
Front Axle	Tires Show Irregular Wear Less Than 75% Tread	-Maybe 30%
Pusher Axle		
Front Drive Axle	Tread is less than 50%	-Maybe 30%, 1 tire has gouge in the sidewall
Rear Drive Axle		
Notes on Tires		
Exhaust System	Status	Comments
Manifold	In Good Condition	
Exhaust Tubing	In Good Condition	
Muffler	In Good Condition	
DPF System		
Emnsions Warning Light		
Exhaust Shield	In Good Condition	
Exhaust Stack		
Exhaust Mounting Bracket	In Good Condition	
Frame	Status	Comments
Integrity of Frame	In good Condition	
Suspension	Status	Comments
Air Bags		
Air Leaks		
Air Lines		
Spring Packs	In Good Condition	
Front Spring Hangars	In Good Condition	
Rear Spring Hangars	In Good Condition	

Suspension	Status	Comments
Radius Arms		
Rear Suspension Bushings	In Good Condition	
Air Leveling Valve		
Steering and Front Axle	Status	Comments
Steering Pump	Noisy and Pumping Normally	-Whining noise
Steering Lines	In Good Operating Condition	
Steering Sector	In Good Operating Condition	
King Pins/Ball Joints	In Good Condition	
Steering Shaft	In Good Condition	
Pitman Arm	In Good Condition	
Drag Link	In Good Condition	
Tie Rod	Loose or Worn Jointss	-Driverside tie rod end bad
Toe in Check	Out of Tolerance	-Needs alignment checked
4x4 Hubs	Operate Normally	
Steering Wheel	Wheel In Good Condition	
Steering Wheel Position	Wheel is Not Centered When Driven	-Needs alignment checked
Fuel System	Status	Comments
Fuel Gauge	Works Normally	
Fuel Tank	In Good Condition	
Fuel Fill	Fills Normally	
Fuel Lines	In Good Condition	
Fuel Filter	Not Replaced	
Glow Plugs or Exhaust Heater	Status	Comments
Glow Plug Operation	Glow Perform Normally	
Intake Manifold Heater	Cycle Normally	
Fluids	Status	Comments
Windshield Washer	Full	
Engine Oil	Appears That It Needs to be Changed	
Radiator Anti-Freeze	Full and Tested to 20 Below	
Transmission Fluid	Full	
Transfer Case Oil	Full	
Front Drive Axle	Full	
Rear Drive Axle	Full	
Battery Acid Levels		
Hydraulic Oil	Low Level	-Needs to be topped off after control valve oil leak is fixed
Brake Fluid	At Proper Level	
Power Steering Fluid	At Proper Level	
Winch 1 Oil	Filled to Proper Level	
Winch 2 Oil		
Winch 3 (Above Cab) Oil		
Filters	Status	Comments
Water Filter		
Engine Oil Filter	Original (Not replaced)	
Transmission Oil Filter	Original (Not replaced)	
Fuel Filter	Original (Not replaced)	
Carrier Hydraulic System	Not Changed	

Owner: _____

Location: _____

Overall Wrecker Body Condition	Status	Comments
Overall Condition	Good	
Wrecker Body Condition	Status	Comments
Body Sides Condition	In Good Condition	
Body Deck Condition	Has Minor Scratches Wear Marks	-Missing door over cr-6 cubbyhole
Front of Body Condition	In Good Condition	
Body Side Condition	In Good Condition	
Side Rail Cap Condition (2)	In Good Condition	
Driver Side Tool Box 1 Condition	In Fair Condition	-Door sticks
Passenger Side Tool Box 1 Condition		
Tunnel Tool Box 1 Condition		
Tail-Board Condition	In Good Condition	
Power Take-Off	Status	Comments
Operation	Operates Normally	
Oil Leaks	No Oil Leaks	
PTO Warning Light	Does Not Have a PTO Warning Light	
Shifting Mechanism	Electrical Switch Working Properly	
Air Leaks		
Hydraulic Pump	Status	Comments
Oil Leaks		-Pressure line damp
Operation	Pump Operates Normally	
Pump Pressure	Tested to 2500#	
Pump Flow	Not Tested	
Controls & Valve	Status	Comments
Oil Leaks	Leaks From Valve Section	-Needs new seal kit for valve body
Operation	Operates Normally	
Control Levers and Rods	In Good Condition	-Levers need adjusting
Knobs	Cracked or Missing	-3 knobs missing
Hydraulic System Hoses	Status	Comments
Oil Leaks	In Operating Condition	
Hydraulic System Leaks	Status	Comments
Winch Hoses	No Oil Leaks	
Boom Lift Cylinder Hoses	No Oil Leaks	
Boom Extension Cylinder Hoses	No Oil Leaks	
Wheel-Lift Tilt Cylinder Hoses	No Oil Leaks	
Wheel-Lift Extend Cylinder Hoses (2)		-Hose and cylinder damp
Wheel-Lift Up/Down Cylinder Hoses (2)	No Oil Leaks	
Hydraulic Pump Hoses	No Oil Leaks	
Hydraulic Filter	No Oil Leaks	
Bed Lift Cylinders	No Oil Leaks	
Extend Cylinder	No Oil Leaks	
Wheel-Lift Tilt Cylinder		-Damp near bottom of cylinder, but no drips
Wheel-Lift Extend Cylinder		-Damp
Wheel-Lift Claw Cylinder Drivers Side		
Wheel-Lift Claw Cylinder Passenger Side		
Cylinder Condition	Status	Comments

Cylinder Condition	Status	Comments
Boom Lift Cylinder	Operates Normally	
Boom Extend Cylinder	Operates Normally	
Wheel-Lift Extend Cylinder	Minor Leaks Around Cylinder Shaft	-Wet
Wheel-Lift Tilt Cylinder	Operates Normally	
Wheel-Lift Lift Cylinder	Operates Normally	
Wheel-Lift Lift Claw Cylinders		
Pylon	Status	Comments
Overall Condition	In Good Condition	
Winch	Status	Comments
Oil Leaks	No Oil Leaks	
Free-Wheel Mechanism Winch 1	Operates Normally	
Free-Wheel Mechanism Winch 2		
Free-Wheel Mechanism Winch 3		
Housing Winch 1	In Good Condition	
Housing Winch 2		
Housing Winch 3		
Operation Without Load	Performs Normally	
Operation Without Load Notes		
Test Operation Loaded		
Test Operation Notes		
Winch 1 Cable	In Poor Condition	-Should be replaced
Winch 2 Cable		
Winch 3 Cable		
Wheel-Lift	Status	Comments
L-Arms/Scoops	In Good Condition	
L-Arm Straps	In Fair Condition	
L-Arm Storage	In Good Condition	
Driver Side Claw		
Passenger Side Claw		
Driver Side Slide Tray	In Good Condition	
Passenger Side Slide Tray	In Good Condition	
Passenger Side Slide Tray Locks	In Good Condition	
Driver Side Slide Tray Locks	In Good Condition	
Driver Side Front Stops (Vulcan)		
Passenger Side Front Stops (Vulcan)		
Driver Side L-Arm Swivel		
Passenger Side L-Arm Swivel		
Center Pivot Pin and Bushing	Worn and in Need of Replacement	-Needs new
Wheel-Lift Cross-Bar	In Good Condition	
Pins and Bushings	In Good Condition	
Extension Tube	In Good Condition	
Outer Wheel-Lift Assembly	In Good Condition	
Wheel-Lift Swivel Lock Pins		
Wheel-Lift Swive Removeable Lock Pins		
Scoop Locking Pins and Chains		
Driver Side Claw Cylinders		
Main Pivot Pin for Tilting	In Good Condition	

Owner: _____

Location: _____

Wrecker Electrical Systems	Status	Comments
Switch Panel	In Need of Replacement	-Doesn't work
Overall Wiring Condition	In Good Condition	
Bed Wiring Harness Condition	In Good Condition	
Junction Boxes Condition		
Marker Lights	Some Lights Inoperative	-Left rear corner, 3 l'd not working
Driver Side Turn Signals Upper	In Good Condition	
Passenger Side Turn Signals Upper	In Good Condition	
Driver Side Turn Signals Upper Lower	In Good Condition	
Passenger Side Turn Signals Lower	In Good Condition	
Extra Warning Lights		
Extra Clearance Lights		
Upper Work Lights		-Need to check when switch panel is fixed
Lower Work Lights		-Need to check when switch panel is fixed
Work Lights Mounted Near Winch		
Beacon Light 2		
Beacon Light 3		
Beacon Light 1		-Need to check when switch panel is fixed
Tow Light Plug at Tail-Board	Broken or Missing	-Not working
Tool Boxes	Status	Comments
Box Driver Side 1	In Fair Condition	-Door sticks
Box Driver Side 2		
Box Passenger Side 1		
Box Passenger Side 2		
Fenderettes	Status	Comments
Drivers Side		
Passenger Side		
Wrecker Lubrication	Status	Comments
Lift Cylinder Pins	Appears to Have Been Regularly Serviced	
Tilt Cylinder Pins	Appears to Have Been Regularly Serviced	
Wheel-lift Tilt Pin	Appears to Have Been Regularly Serviced	
Wheel-Lift Cross-Bar Pivot Pin	Appears to Have Been Regularly Serviced	
Upper Wheel-Lift Extension Slide Pads	Appears to Have Been Regularly Serviced	
Lower Wheel-Lift Extension Slide Pads (2)	Appears to Have Been Regularly Serviced	
Wheel-Lift Lift Tower Wear Pads		
Wheel-Lift Arm Pins and Bushings	Appears to Have Been Regularly Serviced	
Tool Box Hinges and Latches	In Need of Lubrication	
Chains	Status	Comments
Rear Safety Chains	In Good Condition	-Missing 1 safety clasp
J-Hook Chains	Broken or Missing	-Missing
Tow Sling	Status	Comments

Tow Sling	Status	Comments
Sling Arms	In Good Operating Condition	
Sling Belts	Torn or Worn	-Needs to be replaced
Top Lift Bar	In Good Condition	
Lower Lift Bar	Bent or in Need of Repair	-Bent
Chassis Lubrication	Status	Comments
King Pins/Ball Joints	Appears to Have Been Regularly Serviced	
Tie-Rod Ends	Appears to Have Been Regularly Serviced	
Drag Link	Appears to Have Been Regularly Serviced	
Steering Shaft		
Drive-Line U-Joints	Appears to Have Been Regularly Serviced	
Spring Shackles		
Door Locks and Hinges		
Wrecker Mounting System	Status	Comments
Front Bed Mounting Brackets	Brackets and Bolts in Good Condition	
Rear Bed Mounting Brackets (2)	Brackets and Bolts in Good Condition	
Shock Absorbers	Status	Comments
Front Shocks	In Good Condition	
Rear Shocks	Worn Out Need Replacement	-Need to be replaced