

HC-10

HC10 NexStar™



Engineered for the Way You Work

Auto Crane's HC-10 (hydraulic crane) is engineered specifically for Class 6 mechanic's trucks and equipped with the industry's leading, truly proportional truck-mounted crane control technology—NexStar™.

Key Specifications

Weight:

1,900 lb (862 kg)

Single Line Speed:

60 ft/min (18.3 m/min)

Extended Boom Length:

25' (7.62 m)

Boom Elevation Range:

-12° - +75°

Boom Rotation:

370°, full, non-continuous

Hydraulic Requirements:

15 gpm (56.8 L/min)
at 3,000 psi (206.8 bar)

Cable:

120 ft (36.6 m) of 7/16" (11 mm)
aircraft quality cable

Control Options:

NexStar II, Hardwire

Warranty:

Two-year factory warranty



AUTO CRANE®

*Engineered First.
Engineered to Last.*

MADE IN THE USA

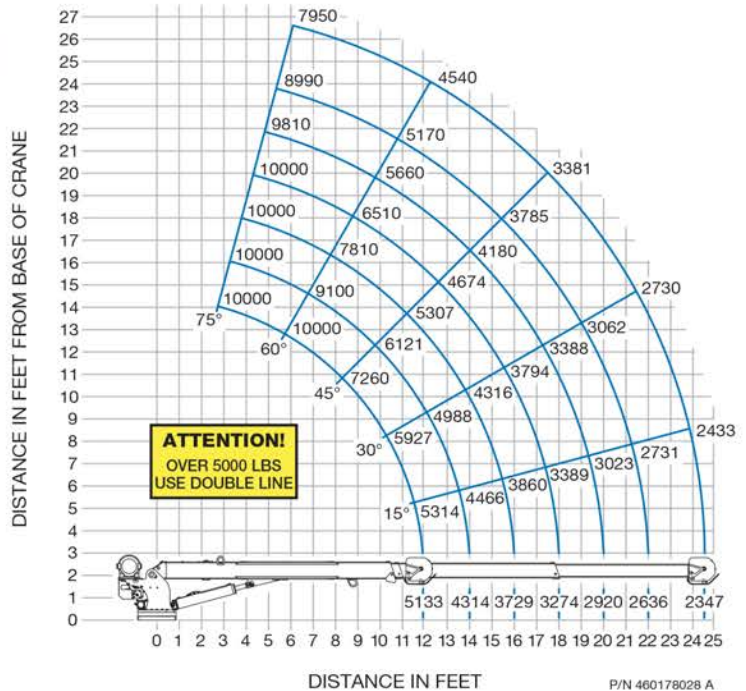
Capacity: 10,000 lb (4,536 kg)

Rating: 60,000 ft-lb (8.30 tM)

Features and Benefits of NexStar™

- **Automatic stop at 100% load capacity**
 - Keeps people, equipment, and loads safer
- **Adjustable speed settings; from 25% to 100%**
 - Enables fine tuning of speeds for total control over the load
- **Proportional control of multiple functions simultaneously and independently**
 - Adjust any function anytime to a different speed, for total control over the load
- **Level sensors monitor the angle of the truck and crane with the NexStar FM remote system on a Titan® crane body**
 - Prevents operation in unsafe, unlevel conditions
- **The NexStar FM remote system receiver displays load-monitoring and diagnostic readouts in plain English**
 - No codes to look-up or memorize; operator views precise percentage load capacity

HC-10 Load Chart



Note: All capacities shown in lbs.
Weight of load handling devices are part of the load and must be deducted from the capacity.



Zips.com | 800-222-6047