

HC-6



HC 6 NexStar™

Engineered for the Way You Work

Auto Crane's HC-6 (hydraulic crane) is engineered specifically for Class 5 mechanic's trucks and equipped with the industry's leading, truly proportional truck-mounted crane control technology—NexStar™.

Key Specifications

Weight:

1,390 lb (680.4 kg)

Single Line Speed:

60 ft/min (18.3 m/min)

Extended Boom Length:

20' 4" (6.2 m)

Boom Elevation Range:

-14° - +75°

Boom Rotation:

370°, full, non-continuous

Hydraulic Requirements:

8 gpm (30 L/min) at 2,750 psi (189.6 bar)

Cable:

80 ft (24.38 m) of 5/16" (8 mm) aircraft quality cable

Control Options:

NexStar II, Hardwire

Warranty:

Two-year factory warranty



AUTO CRANE®

Engineered First.
Engineered to Last.

MADE IN THE USA

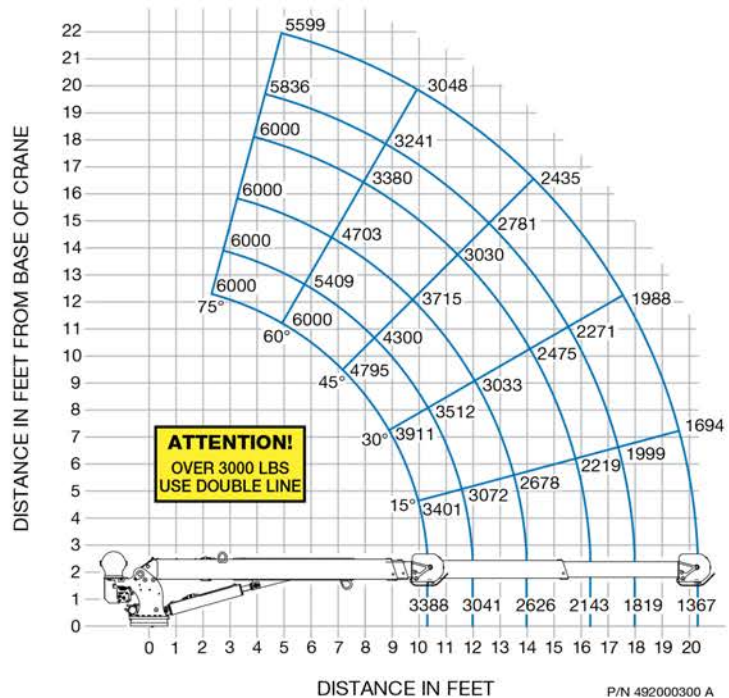
Capacity: 6,000 lb (2,721 kg)

Rating: 35,000 ft-lb (4.84 tM)

Features and Benefits of NexStar™

- **Automatic stop at 100% load capacity**
 - Keeps people, equipment, and loads safer
- **Adjustable speed settings; from 25% to 100%**
 - Enables fine tuning of speeds for total control over the load
- **Proportional control of multiple functions simultaneously and independently**
 - Adjust any function anytime to a different speed, for total control over the load
- **Level sensors monitor the angle of the truck and crane with the NexStar FM remote system on a Titan® crane body**
 - Prevents operation in unsafe, unlevel conditions
- **The NexStar FM remote system receiver displays load-monitoring and diagnostic readouts in plain English**
 - No codes to look-up or memorize; operator views precise percentage load capacity

HC-6 Load Chart



Note: All capacities shown in lbs. Weight of load handling devices are part of the load and must be deducted from the capacity.

ZIP'S

AWDIRECT

Zips.com | 800-222-6047