

**HC-7****HC7** NexStar™**Engineered for the Way You Work**

Auto Crane's HC-7 (hydraulic crane) is engineered specifically for Class 5 mechanic's trucks and equipped with the industry's leading, truly proportional truck-mounted crane control technology—NexStar™.

**Key Specifications****Weight:**

1,490 lb (676 kg)

**Single Line Speed:**

55 ft/min (16.8 m/min)

**Extended Boom Length:**

20' 4" (6.2 m)

**Boom Elevation Range:**

-15° - +75°

**Boom Rotation:**

370°, full, non-continuous

**Hydraulic Requirements:**

8 gpm (30 L/min) at 2,750 psi (189.6 bar)

**Cable:**

95 ft (28.95 m) of 3/8" (9.52 mm) aircraft quality cable

**Control Options:**

NexStar II, Hardwire

**Warranty:**

Two-year factory warranty



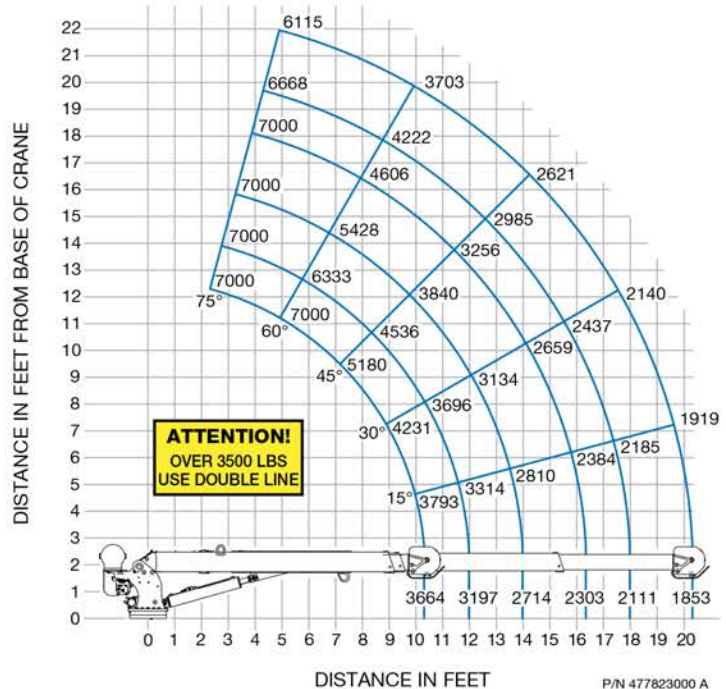
**AUTO CRANE**

**Engineered First.  
Engineered to Last.**

MADE IN THE USA

**Capacity: 7,000 lb (3,175 kg)****Rating: 38,000 ft-lb (5.31 tM)****Features and Benefits of NexStar™**

- **Automatic stop at 100% load capacity**
  - Keeps people, equipment, and loads safer
- **Adjustable speed settings; from 25% to 100%**
  - Enables fine tuning of speeds for total control over the load
- **Proportional control of multiple functions simultaneously and independently**
  - Adjust any function anytime to a different speed, for total control over the load
- **Level sensors monitor the angle of the truck and crane with the NexStar FM remote system on a Titan® crane body**
  - Prevents operation in unsafe, unlevel conditions
- **The NexStar FM remote system receiver displays load-monitoring and diagnostic readouts in plain English**
  - No codes to look-up or memorize; operator views precise percentage load capacity

**HC-7 Load Chart**

Note: All capacities shown in lbs.  
Weight of load handling devices are part of the load and must be deducted from the capacity.

**ZIP'S****AWDIRECT****Zips.com | 800-222-6047**