

CENTURY® MI 100



Some Equipment Shown is Optional

100-TON ROLLING ROTATOR

GAMECHANGER

The Century M100. The world's largest rotator developed by the world's largest manufacturer of towing and recovery equipment.

The M100 is the industry's first heavy-duty unit with 65,000 lbs. planetary main winches, 30,000 lbs. auxiliary winches, and optional 30,000 lbs. drag winches.

The Century M100 also has a maximum boom height over 53 feet. The outrigger stance of the M100 is over 25 feet and the turret travel length is over 12 feet. ***This brings the total work area for the M100 to 8,328 sq.ft.***

Patented Raptor Control System - Standard



Roller System with over 12 ft. of Travel



Optional Dual 30k lbs. Auxiliary Winches



Optional 30k lbs. Drag Winches



Optional Ultra Heavy-Duty Tow-Bar Kit

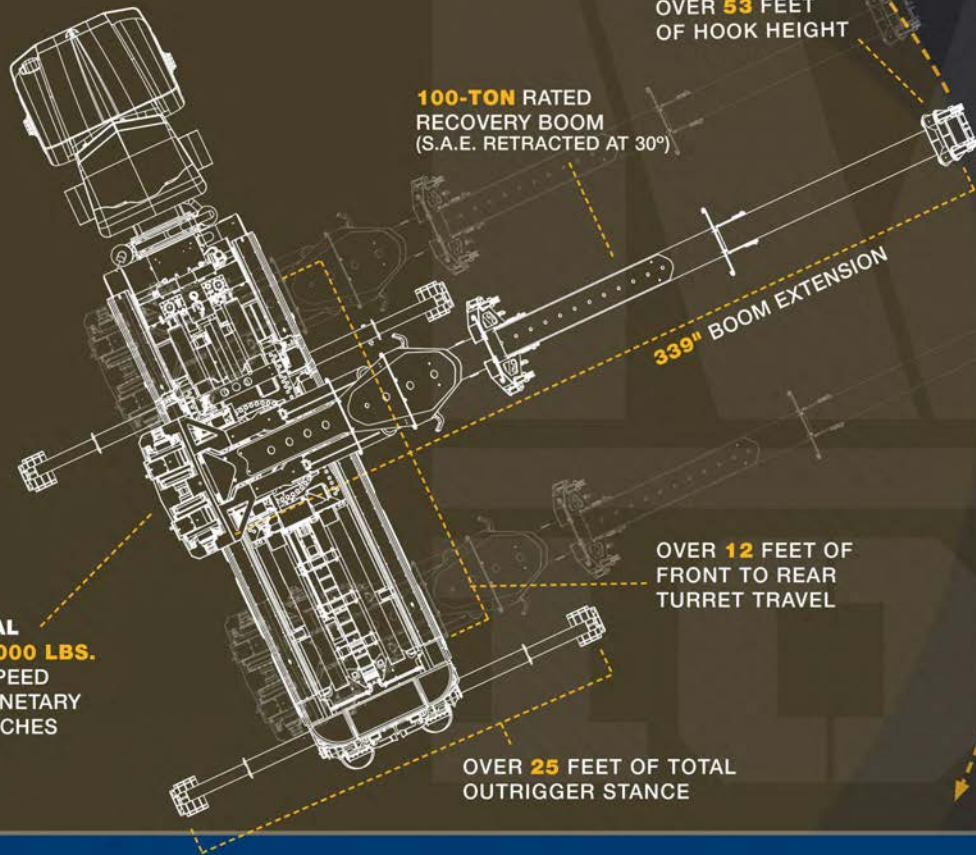


**TD3100
RAPTOR REMOTE**
New Optional TD3100 wireless Raptor remote features a digital screen with load sensing info and more convenient size.

CENTURY **M100**



BEAST MODE



OVER **53** FEET
OF HOOK HEIGHT

100-TON RATED
RECOVERY BOOM
(S.A.E. RETRACTED AT 30°)

339" BOOM EXTENSION

OVER **12** FEET OF
FRONT TO REAR
TURRET TRAVEL

DUAL
65,000 LBS.
2-SPEED
PLANETARY
WINCHES

OVER **25** FEET OF TOTAL
OUTRIGGER STANCE

OVER
8,300
SQUARE
FEET OF
TOTAL
WORK
AREA!

CENTURY **MI**
100

M100 - STANDARD FEATURES

- 102" Wide Aluminum Modular Body
- 228" C.B.
- (2) 65,000 lbs. 2-Speed Winches
- Large Forward Compartments
- Compartments Over the Wheel Well
- Double Panel Doors
- Door Checks
- Backlit Chrome Double Action Latches w/Remote Lock/Unlock
- LED Federal #108 Lighting
- LED Toolbox Lighting
- Rubber Fenderettes
- Mud Flaps
- Chain Rack
- Attachment Storage
- Rubber Isolators
- Rigid Torsional Resistant Mounting Frame
- Tailboard Mounted D-Rings
- Two Rear Outrigger Spade Attachments
- Rear Air & Electrical Hook-ups
- Power Elevation
- 360° Continuous Boom Rotation
- Proportional 3-Stage Power Boom Extension
- Hydraulic Reservoir with an Oil Level Sight Gauge, Tank Drain, & Access Panel
- Holding Valves for Boom Elevation & Extension
- Nylatron Boom Slide Pads
- Cable Tensioners
- Winch Air Free Spool
- Boom Angle Indicator
- Rear Mounted 3-Stage H-Beam Outriggers with (300" Stance)
- Front Mounted 3-Stage H-Beam Outriggers (300" Stance)
- Air Activated House Lock Secures Boom for Transport (Rear or Forward Position)
- Air Activated Travel Lock Secures Turret Base for Transport (Forward Position)
- House Lock Indicator
- Hydraulic Pump
- 360° Sheave Heads
- Dual Raptor Control Stations
- Hydraulic Pressure Gauges (Driver Side)
- "D" Rings Mounted On All 3 Boom Stages
- Raptor Control System

M100 - OPTIONAL FEATURES

- Custom Front Body Pod
- 30,000 lbs Drag Winch Driver Side
- 30,000 lbs. Drag Winch Passenger Side
- Dual 30,000 lbs. Turret Winches
- Ultra Heavy-Duty Tow Bar Kit
- TD3100 Raptor Remote
- Chain Package
- Endless Loop Sling Package
- Alloy Foundry Hooks
- Alloy Shackles
- Alloy Snatch Blocks
- Snatch Block Holders
- Spreader Bar
- Dual Rear Cameras & Monitor
- Air Shift PTO
- 1 1/4" Handrail Kit
- Manual Override Control for PTO
- Light Bar
- Flasher Kit
- Flashing Warning Door Light Kit
- Boom Scene Lights
- LED Work Lighting
- Wireless Tow Light Bar
- Folding Step-Ladder
- M100 Shackle Adapter (Main, 2nd, 3rd Stage)
- M100 Ultra Heavy Duty Rigging Kit
- MatJack High Pressure Kit
- Rotator Choker and Storage Kit
- Seamless Tool Box Matting
- M100 Travel Base Cribbing Storage
- Turret Wing and Light Bracket Kit
- DuraGlow Kit
- Custom Sign Board for Boom
- M100 Stainless Kit
- Stainless Fenderettes

WINCH SPECIFICATIONS

Winch	Winch Capacity	Winch Type	Cable Specifications
Main	(2) 65,000 lbs.	Planetary 2-Speed	7/8" x 250' 8x31 CP8
Turret	(2) 30,000 lbs.	Planetary Single Speed	5/8" x 200' 8x31 CP8
Drag	30,000 lbs.	Planetary Single Speed	5/8" x 200' 8x31 CP8

MINIMUM* CHASSIS RECOMMENDATIONS

Front Axles	Lift Axle	Rear Axle	Clear		R.B.M. (in./lbs.)
			C.A. / C.B.	After Frame from Center Rear Axle	
Tandem-Steer 22,000 lbs. ea.	18,740 lbs.	60,000 lbs.	250"	35"	5,400,000

*All recommendations are minimums. Heavier specifications may be required depending on chassis and equipment weight. Always consult your distributor or the factory for additional information. The outside frame rails of chassis extending behind the cab must be free of fuel tanks, air tanks, battery boxes, etc. A tandem-steer lift axle is recommended for M100 rotator applications. Always consult your local distributor or the factory for additional information.

BOOM SPECIFICATIONS

Model	Boom Structural Rating (S.A.E.)		Max Angle	Max Boom Height	Hydraulic Boom Extension
	Ret. 30'	Ext. 30'			
M100	200,000 lbs.	28,400 lbs.	60°	646"	339"

NOTE: All ratings are based on structural factors only, not vehicle capacities or capabilities. Specifications shown are approximations and may vary depending on chassis selected. Platform rating is based on an equally distributed load. Actual payload carrying capacity is determined by the curb weight of the chassis and equipment and should not exceed the GVWR of the chassis. Miller Industries Towing Equipment Inc. reserves the right to change or modify product and or specifications without notice or obligation. Some equipment shown is optional.



Zips.com | 800-222-6047