

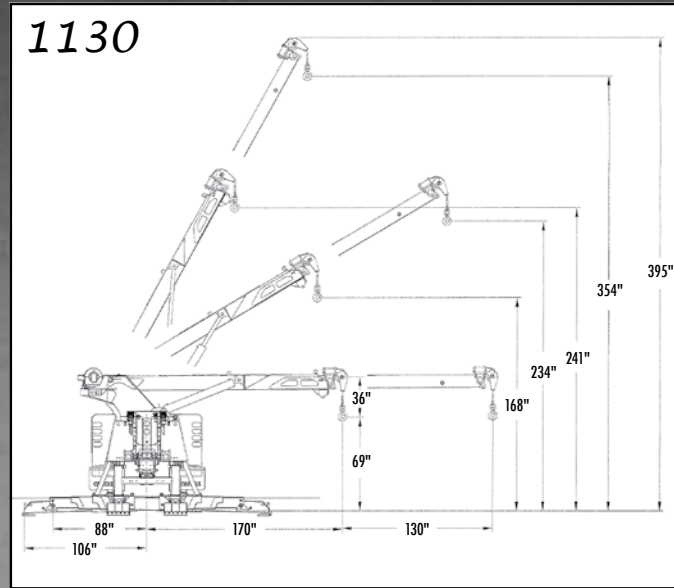
CENTURY[®]

1130 & 1140 ROTATORS



Optional Equipment Shown

1130



The 30-ton 1130 Rotator comes in several configurations: the 156" and 180" tandem-axle model, and the 180" CB aluminum modular body tri-axle version. All 1130 models are equipped with dual 25,000-lb. planetary two-speed winches and a fabricated two-stage recovery boom with 190 degrees of rotation in each direction. Other standard features include chrome double-action latches, spacious storage compartments, eight-function wireless underlift controls and more.

CENTURY



The Century RXP option for the 1140 tri-axle rotator incorporates dual 35,000-lb., two-speed planetary winches, as well as 212" of spread for more stability when lifting. The RXP also provides additional front-axle weight for towing heavier loads and gives operators countless rigging possibilities for those difficult recoveries, thanks to the two additional winches.

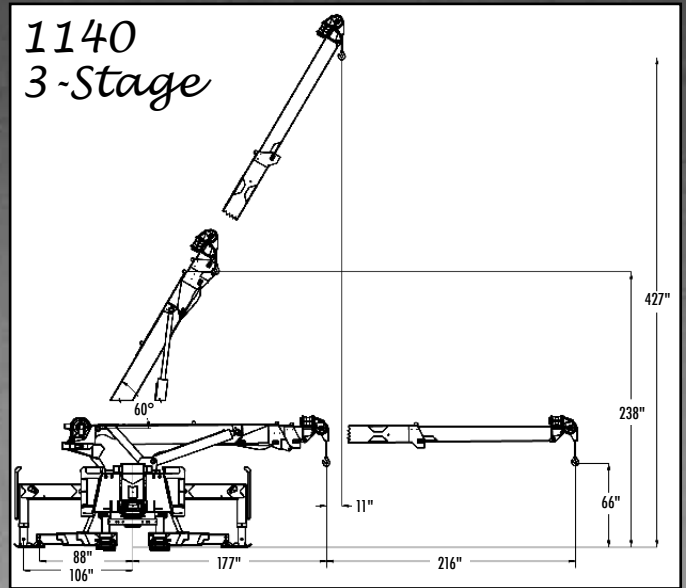


Century's aluminum body is designed to optimize space for your lift forks and popular towing and recovery equipment. Optional front tunnel saddle boxes are available in a variety of sizes to meet your specific equipment needs. All Century Heavy-Duty bodies come with an aluminum tread-plate walkway for easy access to the center section of the recovery unit.



The rear outriggers on Century Rotators were redesigned with a 2 1/2° angle and are now fitted with new lighter-weight spade attachment that is easily stored on the rear legs. The user-friendly spade attachments are secured with a pin that can be quickly and easily removed so the attachments simply flip down into spade position. Also shown is the optional tailboard D-Ring package and aluminum dress-up kit.

1140



The popular Century 1140 40-ton Rotator includes many of the features found in Century's larger 60- and 75-ton models but in a lighter-weight package. Designed for versatility in both towing and recovery, the 1140 is outfitted with dual 35,000-lb. planetary two-speed winches and a fabricated three-stage recovery boom with 190 degrees of rotation in each direction. The 1140 can be ordered with or 180" tandem-axle model, 180" CB tri-axle unit, or the 204" CB RXP Body option.

CENTURY®



Pictured here are the Optional Radio Proportional Illuminated Controls with Dual Manual Controls. The backlit controls offer better visibility in low light environments. The wireless proportional remote control allows the operator to move around the recovery scene while simultaneously operating the boom and winch functions.



The LDU is standard on both the 1130 and 1140, and provides 139" of reach with a lift capacity of 15,000 lbs. when fully extended. Fully retracted, the LDU has a reach of 55" and a lift capacity of 35,000 lbs.



Dual 15,000-lb. turret-mounted winches are optional on the Century 1140 Rotator and come with additional sheave heads mounted on the side of the outer boom, two 175' lengths of 1/2" wire rope and two 5-ton alloy swivel hooks.

BOOM SPECIFICATIONS

Maximum Angle.....	60°
Boom Rotation (From Stowed Position).....	190° CW & CCW
1130	
Retracted.....	60,000 lbs.
Extended.....	25,000 lbs.
Maximum Hook Height.....	354"
Boom Extension.....	130"

1140 3-Stage

Retracted.....	80,000 lbs.
Extended.....	20,000 lbs.
Maximum Hook Height.....	427"
Boom Extension.....	216"

WINCH & CABLE RATING

1130

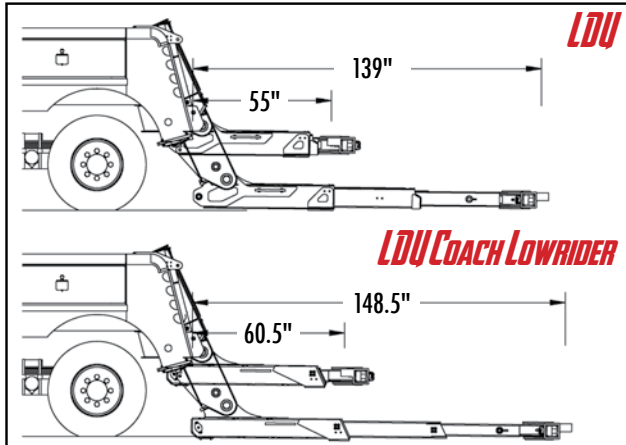
Rating (first layer of drum) each Winch.....	25,000 lbs.
Diameter and Length (each winch).....	5/8" x 200'
Type.....	.6 x 37 IWRC

1140 / 1130 35K Winch Option

Rating (first layer of drum) each Winch.....	35,000 lbs.
Diameter and Length (each winch).....	3/4" x 200'
Type.....	.6 x 37 IWRC

LDU SPECIFICATIONS

Fully Retracted - 55".....	35,000 lbs.
Fully Extended - 139".....	15,000 lbs.
Tilt.....	10° +/-
Tow Rating.....	80,000 lbs.



Based on a 42" chassis frame height. Retracted distance taken with fork holders flipped inward.

CHASSIS RECOMMENDATION

GVWR.....	54,000 lbs.
Minimum C.B.....	156" (1130) / 180" (1140)
Maximum Frame Height.....	42"
After Frame from Center of Rear Axle.....	40"
1130 R.B.M.....	3,000,000 (in./lbs.)
1140 R.B.M.....	3,500,000 (in./lbs.)
RXP R.B.M.....	4,000,000 (in./lbs.)

All ratings are based on structural factors only, not vehicle capacities or capabilities. Specifications shown are approximations and may vary depending on chassis selected. Miller Industries Towing Equipment Inc. reserves the right to change or modify product and or specifications without notice or obligation. Some equipment shown is optional.

BODY CONFIGURATIONS

Standard

1130/1140 - 180" CB Tandem (Top Beam Legs)

Optional Configurations

1130 - 156" CB Tandem (Top or H-Beam)
 1130/1140 - 180" CB Tandem (H-Beam)
 1130/1140 - 180" CB Tri-Axle (Top or H-Beam)
 1140 RXP - 204" Tri-Axle

STANDARD BODY FEATURES

- 180" CB Aluminum Modular Body
- 9 Function Floor Mounted Switch Panel (1130)
- Power Distribution System - MMO (1140) (2 Touch Screen Displays, 3 MVEC CANS)
- Compartments Over the Wheel Well
- Chrome Double Action Latches
- Keyless Lock/Unlock Tool Compartments
- LED Toolbox & Federal #108 Lighting
- Rubber Fenderettes & Mud Flaps
- Chain Rack & Fork Holders
- Rubber Isolators
- Enclosed Inner Wheel Wells
- Rigid Torsional Resistant Mounting Frame
- Tailboard Mounted D-Rings (1 Pair)
- Flip Down Rear Outrigger Spades

STANDARD BOOM FEATURES

- 360° of Boom Rotation / 190° Each Direction
- Proportioning Power Boom Extension with Counter Balance Valve
- Dual Control Stations
- Boom Elevation & Extension Holding Valve
- Boom Slide Pads
- Boom Angle Indicator
- Dual 2-Speed Winches
- Cable Tensioners & Winch Air Free Spool

OPTIONAL EQUIPMENT

- 212" Two-Stage Under-frame "H-Beam" Front Outriggers
- 262" Three-Stage Under-frame "H-Beam" Front Outriggers*
- 212" RXP Front Outriggers* (204 TriAxle)
- Additional Lift Forks & Attachments
- Dual 15K Turret Mounted Winches* (N/A on 1140s with RXP Option)
- 25K or 35K Belly Drag Winch (1130 Only)
- 35K or 50K Belly Drag Winch (1140 Only)
- Load Sensing System* (1140)
- Radio Proportional Illuminated Controls
- Radio Proportional Illuminated Controls with Dual Manual Controls
- Power Distribution System - MMO (1130) (2 Touch Screen Displays, 3 MVEC CANS)

*Only available on the 1140

STANDARD BOOM FEATURES (CONT.)

- Hydraulic Front Outriggers (Over Frame)
- Hydraulic Rear Outriggers (176"-1130 / 220" - 1140)
- Air Activated House Lock, Secures Boom in Rear or Forward Position for Transport
- House Lock Indicator & Window
- Hydraulic Pump
- 360° Sheave Heads
- Hydraulic Pressure Gauge (Driver Side)
- "D" Rings Mounted on Each Stage

STANDARD UNDERLIFT FEATURES

- 8 Function Wireless Remote
- Power Elevation & Extension
- Power Tilt & Hydraulic Fold
- 3-Stage Design
- Fabricated Low Profile 70° Pivoting Crossbar
- 2 Piece Pivot Pin
- Upper/Lower Thrust Washer
- Low Profile Fork Holders
- 9 Pairs of Cast Steel Forks
- 1 Pair of Spring Lift Adapters
- 1 Pair of Hook Adapters
- Safety Chains In Tailboard

DISTRIBUTED BY:

Miller
INDUSTRIES

ZIP'S TRUCK
EQUIPMENT INC.