



12 & 16 Series LCG™ Carriers



Optional Equipment Shown.

Enduring Value for Your Demanding Business

Vulcan has added an entirely new dimension to the concept of transport, thanks to its 12 & 16 Series LCG™ Carriers. The patented design lowers the deck height as much as five to six inches over that of conventional carriers. The result is a better load angle, better stability during transport, the ability to haul taller loads, and increased operator safety because the operator can easily secure loads while standing on the ground.



EXTREME ANGLE OPTION SHOWN WITH REMOVABLE BLADE RAILS



With a five- to six-inch lower deck height, the LCG™ allows for better stability and overhead clearance when hauling vehicles or equipment as well as increased operator safety because the operator can secure the equipment while standing on the ground. Additionally, the LCG™'s low load angle allows for easier loading overall.



The 12 Series LCG™'s low-profile wheel lift stinger provides 66 inches of reach with a lift rating of 4,000 pounds. When retracted, the crossbar tucks in with minimal overhang. The LCG™ comes standard with the slide in L-Arm system, while the Vulcan strapless system and hydraulic Auto Grip systems are both optional.



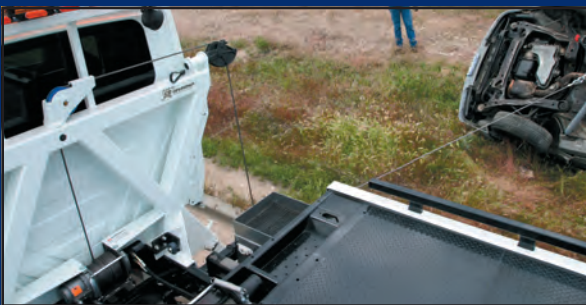
With a lower deck height and low load angle, the LCG™ allows the operator to load most vehicles without needing wood.



In addition to the low load angle, the LCG™ has a dump angle of 20°. This allows the operator to easily unload damaged vehicles or equipment.



- Patented Anti-Tilt Device - Ensures the Bed will not Tilt until it Clears the Bed Locks
- Positive Lock-Down - Secures the Bed to the Chassis Frame for Transport
- Inboard Mounted 3" Lift Cylinders - Allows for the Unrestricted Mounting of Toolboxes
- LED Body Lighting - Longer Light Life and Less Amp Draw
- One Piece Tread Plate - Eliminates Unsightly Weld Seams and the Potential for Damaged Vehicles and Equipment to get Hung up on Welds, Smooth Floor Available at No Charge.



The unique design of the SP 8000 Sidepuller allows the operator to use the removable sheave head on either side or winch directly from the center pivoting sheave. The center sheave is able to pivot 180 degrees, allowing you to winch in any direction behind the cab, even straight onto the carrier deck.

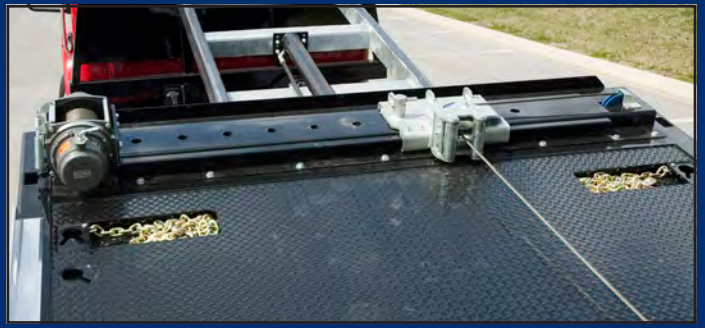


The Autogrip II self-loading wheel lift option operates from the control stations of the carrier by lowering the wheel lift, opening the claws and extending the crossbar until it comes into contact with the tires of the towed vehicle. The claws are then closed and the vehicle is ready to be lifted.





The Side Mount Winch allows the operator to easily adjust a sliding pulley assembly into nine different positions for a straight line pull when loading vehicles with screw in tow eyes or hooks. The option is available with a 9,000 lb. or 12,000 lb. planetary winch on steel carriers and requires a stationary cab protector or the SP 8,000 Sidepuller option.



- Multiple Fixed and Removable Side Rail Options to Meet your Specific Requirements
- 8" On Center Crossmembers on Steel Beds - Gives you a Stronger, more Durable Bed.
- 11-Key Slots on Steel Beds - Allows for Multiple Tie-Down Options when Securing Loads.
- 210" Subframe - Allows for Maximum Overlap for Strength and Stability
- Dual Trays - Separates Electrical Harness from Hydraulic Hoses for Longer Life and Serviceability.



The LCG™ tailboard is equipped with easy access safety chains, an adjustable rear stabilizer and anti-theft L-arm storage.



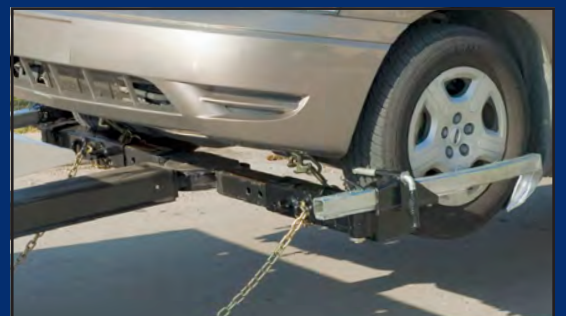
The 16 Series LCG™ aluminum is available in a 3- or 4-Car multi-deck configuration, with main deck lengths from 24' to 30'.



The SST® option is available on the 12 Series LCG™ steel carrier with removable blade rails and on the 12 Series aluminum carrier with solid, narrow-profile rails.



Vulcan's Strapless Wheel Retainer System is one of easiest and safest systems on the market today. The retainers pivot both vertically and horizontally for easy hook up in a variety of situations and best of all, no tie-down straps.



STANDARD FEATURES

- Platform Available in Aluminum or Steel
- Floor Level Sides with Stake Pockets (Steel)
- Tri-Hollow Tube Rails (Alum.)
- 210" Full Length Subframe
- Right and Left Chain Trays
- Safety Chains (2-front, 2-rear)
- Painted in Black Acrylic Enamel (Steel)
- Left & Right Side Illuminated Controls
- Federal Standard #108 LED Lighting
- 8,000 lb. Hydraulic Winch w/50' Cable
- Full Function Wheel Lift System
- Slide-In L-Arms With Anti-Theft Storage
- Pre-Wired Electrical Junction Box
- Adjustable Rear Stabilizer

- Bed Built 102" Wide
- 11 Key Slot Package (Steel)
- 4 Key Slot Package (Alum.)
- Full Length Slide Pads
- Bed Anti-tilt Lockout
- Positive Lock-down
- Two Lift Cylinders
- One Extension Cylinder
- Winch Clutch Release
- Cable Tensioner & Roller Guide
- Tow Light Socket
- Mud Flaps
- Hydraulic Pump
- Back-Up Lights & Alarm

OPTIONAL FEATURES

- Frame Mounted Headboard (Req. 6" Additional CA)
- Tribox Frame Mounted Headboard (Req. 8" Additional CA)
- Smooth Floor in Lieu of Tread Plate (Steel, N/C)
- Optional Color on Top of Deck and Side Rails (Steel)
- Solid Tube Side Rails (Steel, N/C)
- Steel Removable Tube Rails*
- Aluminum Removable Blade Rails
- Aluminum Removable Tube Rails*
- Work Lights (Rear, Pylon and/or Winch Mounted)
- Vulcan's Strapless Wheel Retainer System
- Dock Stabilizer in lieu of Wheel Lift
- Steel or Aluminum Tool Compartments
- 8,000 lb. or 12,000 lb Planetary Winch
- 15,000 lb Planetary Winch (16 Series Steel)
- SP 8000 Sidepuller (Req. 12" Additional CA)

- Bed Mounted Headboard
- Various Chain & Strap Assemblies
- Galvanized Subframe
- SST® - Solid Sloped Tail Option
- Wired or Wireless Winch Remote
- Wood Floor*
- Rubber Flooring*
- PTO
- Switch Panel
- Emergency Lighting
- 8 Key Slot Package (Alum.)
- Additional Key Slots
- Side Mount Winch (Steel)
- Auto-Grip Wheel Lift
- 1/4 Deck Plate (16 Series)

*N/A with the Extreme Angle or SST® Option

MULTI-DECK OPTION

Minimum GVWR	33,000
3-Car CA	24' - 166", 25' - 170", 26' - 182"
4-Car CA (w/ Lift Axle) 30'	224"
4-Car CB (Tandem) 30'	206"

SP 8000 RATINGS & FEATURES

Boom	8,000 lbs.
Winch	9,000 lbs.
Stiff Leg	8,000 lbs.

- Eight Tie-Back Points
- Multi-Positional Flipper Feet
- 9,000 lb. Planetary Winch
- Winch Tensioner & Free-Spool
- Wire Rope - 3/8" x 100'
- Hydraulic Stiff Legs
- Center Pivoting Boom Head
- Removable Outer Boom Head
- Painted in Flat Black

SP 8000 OPTIONAL FEATURES

- Wired or Wireless Winch Control
- Lightbar Mount

NOTE: All ratings are based on structural factors only, not vehicle capacities or capabilities. Specifications shown are approximations and may vary depending on chassis selected. Platform rating is based on an equally distributed load. Actual payload carrying capacity is determined by the curb weight of the chassis and equipment and should not exceed the GVWR of the chassis. Miller Industries Towing Equipment Inc. reserves the right to change or modify product and or specifications without notice or obligation. Some equipment shown is optional.

BED SPECIFICATIONS

	12 SERIES	16 SERIES
Load Rating*	12,000 lbs.	16,000 lbs.
Platform Lengths	20.5' 21', 21.5', 22'	20.5', 21', 21.5', 22'
Additional Lengths	NA	23' 24, 25', 26'
Platform Thickness	3/16"	3/16"
Platform Width (Outside)	102"	102"
Platform Width (Inside)**	96.5"-101"	96.5"-101"
Steel Crossmembers	2" x 2" on 8" Centers	3" x 3" on 8" Centers
Alum. Crossmembers	2.25" on 4" Centers	3" on 4" Centers
Subframe Rails	5"x3" x 5/16" HS Tube	5"x3" x 3/8" HS Tube
Rear Pivot	1 Piece - 1.5" Diameter	1 Piece - 1.5" Diameter
Tilt Cylinders	3" Bore	3.5" Bore
Extension Cylinder	3.5" Bore x 120" Stroke	3.5" Bore x 120" Stroke
Winch (1st Layer)	8,000 lb.	8,000 lb.
Cable	3/8" x 50'	3/8" x 50'
Wheel Lift Reach (Extended)	66"	66"
Wheel Lift Rating (Extended)	4,000 lbs.	4,000 lbs.
Tow Rating	10,000 lbs.	10,000 lbs.

* Platform rating is based on equally distributed load.
** Inside Bed Widths will vary based on Side Rail Option

CHASSIS RECOMMENDATIONS

	12 SERIES	16 SERIES
Minimum GVWR	19,500 lbs.	26,000 lbs.
Maximum GVWR	26,000 lbs.	33,000 lbs.
Minimum Frame Height	33"	36"
Maximum Frame Height	38"	40"
Wheel & Tire Size	19.5	22.5
Minimum Frame Length Behind Center of Rear Axle -12 & 16 Series	36"	

FRAME RBM - EACH RAIL

12 Series	600,000 inch-lbs.
16 Series (22' and Shorter)	800,000 inch-lbs.
16 Series (23' and 24')	1,200,000 inch-lbs.
16 Series (25' and 26')	1,600,000 inch-lbs.
16 Series (30' 4-Car)	1,800,000 inch-lbs.

CAB-TO-AXLE REQUIREMENTS

20.5'	132"
21'	138"
21.5'	144"
22'	150"
23'	156"
24'	166"
25'	170"
26'	182"

A minimum of 49" between the inside of the rear tires is required. The unladen chassis frame height should not be lower than rear tire height. The outside frame rails of the chassis extending behind the cab must be free of fuel tanks, air tanks, exhaust stacks, etc.

Air-bag rear suspensions are recommended for the lowest possible load angle but the LCG™ carrier can be mounted on some chassis with leaf spring suspensions. Most chassis components behind the cab outside the frame must be at least 2 inches below the top of the truck frame to clear the bed slide rails.

Fuel tanks must be under the cab. Fuel tanks can extend up to 6 inches behind the cab only in combination with a frame-mounted pylon. Fuel fill must not be behind the cab.

The preferred location for the battery box is under the passenger seat or under the cab, battery boxes in other locations may require relocation.

The LCG™ carrier is not compatible with chassis that have inboard mid-ship fuel tanks such as the Ford 550, GM 5500 and Dodge 5500.



DISTRIBUTED BY:

©2013 Miller Industries Towing Equipment Inc. All Rights Reserved.

800-222-6047

www.zips.com