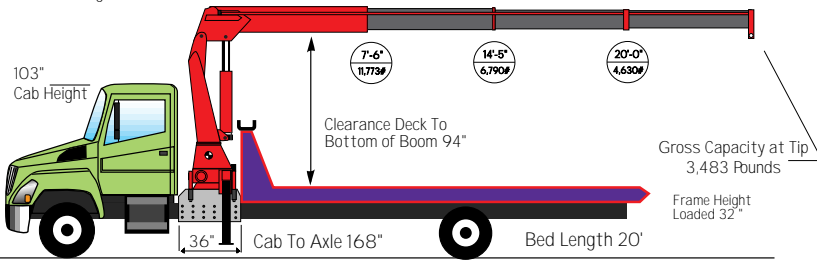




## Hino 258 Model SCR1423

13'-6"  
Clearance Height

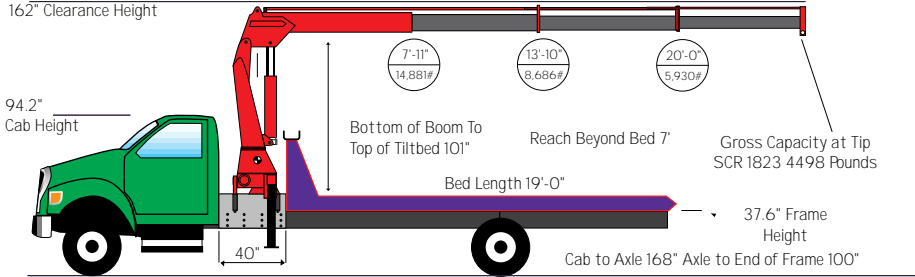
Boom Reach 26'-7"  
From Center of Gravity to Tip



## Ford F-750 XLT Models SCR1823

13'-6"  
162" Clearance Height

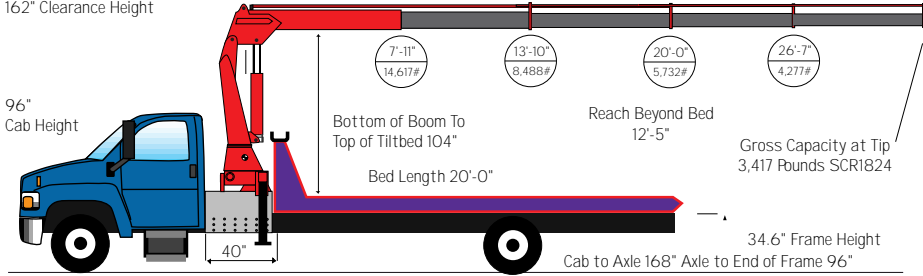
Boom Reach 26'-7"  
From Center of Gravity to Tip



## Chevrolet C7500 Model SCR1824

13'-6"  
162" Clearance Height

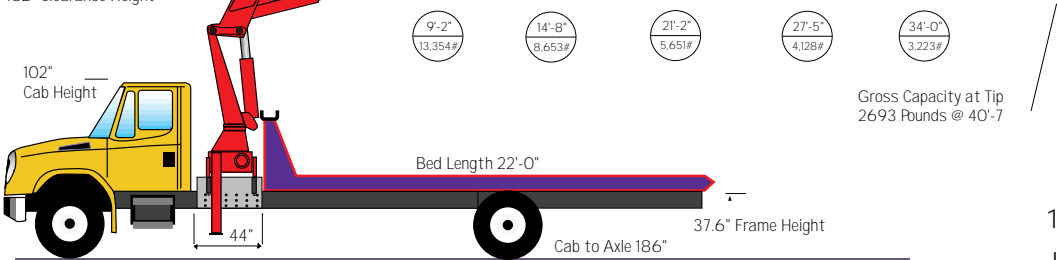
Boom Reach 32'-9" From Center of Gravity to Tip



## International 4400 Showing Model SCR 2014

13'-6"  
162" Clearance Height

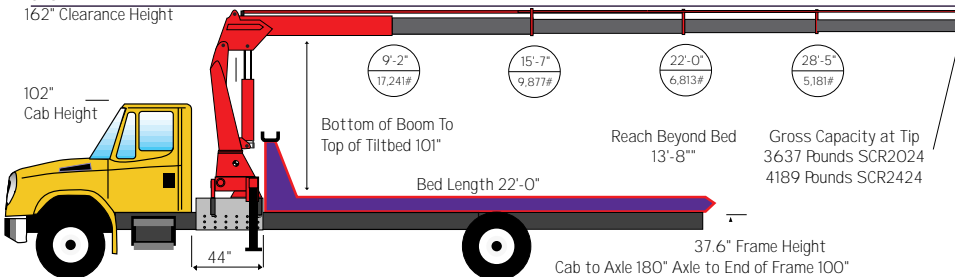
Boom Reach 40'-7" From Center of Gravity to Tip



## International 4400 Showing Models SCR 2024-2424

13'-6"  
162" Clearance Height

Boom Reach 34'-9" From Center of Gravity to Tip



# Recovery Crane Model Specification Table

Crane Type	SCR14		SCR16		SCR18		SCR20		SCR201		SCR24	
	3	4	3	4	3	4	3	4	3	4	3	4
Standard Reach	26.2	26.5	32.7	26.5	32.7	28.3	35.0	40.6	28.3	35.0		
Height In	ft/inths	ft/inths	ft/inths	ft/inths	ft/inths	ft/inths	ft/inths	ft/inths	ft/inths	ft/inths		
Standard Outrigger Width	7.7	7.7	7.7	7.7	7.7	7.9	7.9	7.8	7.9	7.9		
Optional Outrigger Width	18.5	18.5	18.5	18.5	18.5	18.4	18.4	18.5	18.4	18.4		
Operating Pressure	psi	psi	psi	psi	psi	psi	psi	psi	psi	psi		
Turning Circle	4350	3915	3915	4350	4350	4060	4060	4060	4350	4350		
Weight Standard	degrees	degrees	degrees	degrees	degrees	degrees	degrees	degrees	degrees	degrees		
Weight Optional Outrigger	pounds	pounds	pounds	pounds	pounds	pounds	pounds	pounds	pounds	pounds		
Pump Demand	gpm	gpm	gpm	gpm	gpm	gpm	gpm	gpm	gpm	gpm		
Width as Shipped	ft/inths	ft/inths	ft/inths	ft/inths	ft/inths	ft/inths	ft/inths	ft/inths	ft/inths	ft/inths		

1. Hino is the only Japanese chassis providing required specs for our crane.
2. The International chassis shown are the only chassis able to work with our heaviest cranes and still be under the FET threshold!