



Everything you need to tow, rig, recover and haul.

Login Wishlist View Cart (0) f @ t ▶

Parts Equipment

Keyword or Item #

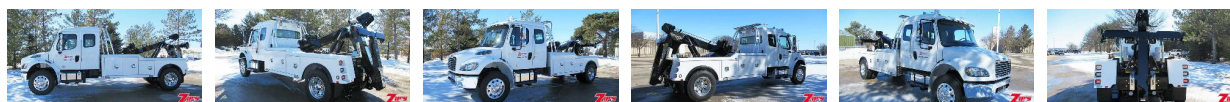
800-222-6047 Trucks & Equipment Products & Apparel Replacement Parts Free Online Shipping

Home > Major Equipment Detail > Trucks & Equipment > 2018 Century 3212-CX2 Medium Duty...

Request Info | Print This | Share This

<<< Back to Shopping (/trucks-and-equipment?restoreFilters=true)

### 2018 Century 3212-CX2 Medium Duty Wrecker, Freightliner M2EC, 14249



#### Chassis Specs

**Stock Number:** NV14249  
**Year:** 2018  
**Make:** Freightliner  
**Model:** M2EC  
**Engine Make:** Cummins  
**Engine Model:** ISB 6.7L-300  
**Horsepower:** 300  
**Fuel Type:** Diesel  
**Mileage:** 7  
**Transmission:** Allison 2500 RDS Automatic  
**Axle Ratio:** 5.29  
**GVWR:** 33,000#  
**Front Axle Weight Rating:** 12,000#  
**Rear Axle Weight Rating:** 21,000#  
**Cab to Axle:** 120"  
**Wheel Base:** 230"  
**Brake Type:** Air Brakes  
**Engine Brake:** Exhaust Brake  
**Suspension:** Air Ride  
**Tires:** Front Tires: 275/80R22.5 BWS AS (Michelin XZE2), Rear Tires: 275/80R22.5 BWS AS (Michelin XDE M/S)  
**Wheels:** Aluminum  
**VIN #:** 1FVACXFC7HJJ9113  
**More Chassis Features:** Air Compressor/Air Conditioning/Air Horns/Air Dryer

#### Body Specs

**Stock Number:** NV14249  
**Equipment Brand:** Century  
**Equipment Model:** 3212-CX2 Medium Duty Wrecker w/Wheel Lift  
**More Body Features:**  
 SN 3212-0803-E17  
 3212CX2 CENTURY - Aluminum Modular Integrated Wrecker  
 124002083 - 3 Function In Cab Remote Controls  
 INSTALLATION  
 TALAMAR ALL SEASON - Talamar All Season Hydraulic Oil  
 CS6B-A6705-S1KP - Muncie Hot Shift PTO  
 124004601 - 47" Aluminum Tubular Pylon  
 2169TRP-A - 69" Code 3 2100 Series 18 Head LED Lightbar  
 12-0307743C - Qty. 2, LED Slimline Light Turn Signals  
 BP-1492112 - Qty. 2, 5" Work Lights w/Sealed Rubber Housing For Hook Up Lights  
 BP-1492114 - Qty. 2, 5 1/4" Square LED Work Lights  
 124004448 - 1 Pair, Hella LED Underlift Mounted Lamps  
 Front & Rear Strobe Lights

#### Brochure

**Century 3212 CX2 (2007)**  
[https://zips.com/docs/default-source/new-equipment-brochures/century/century/century\\_3212cx2\\_2007Esfvrsn=21390a13\\_2](https://zips.com/docs/default-source/new-equipment-brochures/century/century/century_3212cx2_2007Esfvrsn=21390a13_2)

**18FR0M2W1201XAAA2ACU0H00**  
[https://zips.com/docs/default-source/brochures/18fr0m2w1201xaaa2acu0h00.pdfsfvrsn=fe687512\\_0](https://zips.com/docs/default-source/brochures/18fr0m2w1201xaaa2acu0h00.pdfsfvrsn=fe687512_0)

#### Contact us

**Equipment Finder**  
<https://zips.com/equipment-finder>

**Sell Your Equipment**  
<https://zips.com/equipment-for-sale>

**Equipment Rental**  
<https://zips.com/equipment-rental>

**Warranty Information**  
<https://zips.com/warranty-information>

LH & RH 50 Gallon Aluminum Fuel Tanks  
 Vinyl Air Ride High Back Driver Seat w/Arm Rests  
 Fixed Vinyl High Back Passenger Seat  
 Rear Vinyl Bench Seat  
 Power Windows/Door Locks  
 Cruise Control  
 Tilt/Telescopic Wheel  
 Rubber Flooring  
 Chrome Bumper/Grille  
 Front Tow Hooks  
 Sunvisor  
 Power/Heated Swing Out Mirrors w/Convex Mirrors  
 AM/FM/CD/MP3/Bluetooth Stereo Radio  
 Fire Extinguisher  
 Engine Block Heater  
 Cab Roof Marker Lights  
 7 Wire Plug In  
 Glad Hands Hook Ups  
 Color: WHITE

6-FR-PANEL - 6 Switch Panel  
 ZP-SPP-LEGEND - Legends For Switch Panel  
 ZIP-30 - Zip's Logo 30" Mudflaps  
 124002523Z - Chain Kit Package  
 6I-8T6 - Qty. 2, 8 Ton 6" Snatch Blocks  
 38-104HD - 1 Pair, B/A 2" Heavy Duty Tie Down Straps w/Cordura Sleeves  
 Z1304-81A - 1 Pair, Zacklift Height Extenders  
 ZIP-10 - Safety Tow Light Kit w/Box & CR6 Plug In  
 TM-36S2 - 36" Wireless Tow Light  
 TM-LED Storage - Fabricate & Install Storage Bracket & Charging Station For TM-LED Wireless Tow Light  
 That 22.5 KW/Pete AB - Top Hat & Lug Nut Kit  
 P4958LN3, Q1401, Q2020 - Phoenix Lugnut Covers, Middle Hub Cover Kits, Stainless Steel Rear  
 ZP-V30BET, ZP-V30CP - V30 Boom End Protector & Chain Protector Trim  
 50000543 - Stainless Steel Dress U Kit, Century 3212  
 124002642 - Air & Electrical Hook Up To The Rear  
 PW3212/V30 - Painting Aluminum Body 1 Color

**Equipment Sales & Information**

[800-222-6047 \(tel:8002226047\)](tel:8002226047), Press 3  
 Fax: 641-394-4044  
[Email Sales \(/about/information-request?Title=Sales:\)](mailto:Sales@zip.com)

**Finance Inquiries & Payment Processing**

[800-222-6047 \(tel:8002226047\)](tel:8002226047), Press 4  
 Fax: 641-394-5706  
[Finance Information \(/finance\)](mailto:Finance@zip.com)

**Equipment Service Scheduling & Inquiries**

[800-222-6047 \(tel:8002226047\)](tel:8002226047), Press 2  
[Email Service \(/about/information-request?Title=Service:\)](mailto:Service@zip.com)

**Customer Service & Bill Pay**

[800-222-6047 \(tel:8002226047\)](tel:8002226047), Press 0  
 Fax: 641-394-4044  
[Email Customer Service \(/about/information-request?CustomerService:\)](mailto:CustomerService@zip.com)

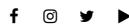
While all information contained in this literature and other advertising has been obtained from sources deemed reliable, neither Zip's Truck Equipment, Inc., or its owners or agents, shall be liable for the correctness of descriptions. This page, as in all printed matter regarding this sale, is merely a guide and subject to additions or deletions. All purchases are based entirely on the personal inspections and/or opinion of the buyer.

<a href="#">My Wishlist</a>	<a href="#">About Us</a>	<a href="#">Owner's Gallery</a>	<a href="#">Resources &amp; Documentation</a>	<a href="#">Shipping&gt;Returns/Warranty Information</a>
-----------------------------	--------------------------	---------------------------------	---	--

**Join our Newsletter**

Email Address	<input type="button" value="JOIN"/>
---------------	-------------------------------------

**Lets get social!**



**Live Webcams!**



**Contact Us**

[800-222-6047](tel:800-222-6047)      316 W Milwaukee St.      27265 Wick Road  
[Request Information](#)      New Hampton, IA 50659      Taylor, MI 48180  
 Fax: 641-394-4044      Fax: 734-494-5301