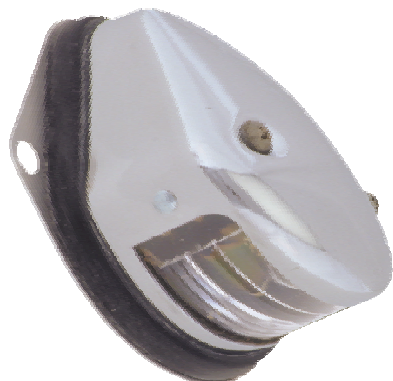


## LICENSE PLATE LAMPS

437 series



**DIMENSIONS:** **437-00, 10:** 10-15/16" L. x 4-5/8" H. x 2-3/16" D. Two 1/4" mtg. holes on 2-1/2" centers. **437-08, 11:** 4-1/8" L. x 3-7/16" H. x 2-3/16" D. Two 1/4" mtg. holes on 3-5/8" centers.

**MATERIAL:** **437-00, 08:** Steel or plastic body & base. Zinc plated steel socket, acrylic lens, stainless steel and nylon pigtail, stainless steel screws & rubber gasket. **437-10,11:** Black hsg. is polycarbonate and chrome plated hsg. is ABS plastic. Black or Chrome

**FINISH:**

**ORDER NO.:**

437-00-132	Clear, Black Finish, License Lamp With Bracket
437-00-332	Clear, Chrome Finish, License Lamp With Bracket
437-08-132	Clear, Black Finish, License Lamp Less Bracket
437-08-332	Clear, Chrome Finish, License Lamp Less Bracket
437-10-132	Clear, Black Plastic Housing, License Lamp w/ Bracket
437-10-332	Clear, Chrome Plated Plastic Hsg., License Lamp w/ Bracket
437-11-132	Clear, Black Plastic Housing, License Lamp Only
437-11-332	Clear, Chrome Plated Plastic Housing, License Lamp Only

### REPLACEMENT PARTS

MODEL	12V BULB	BODY ASSEMBLY	PIGTAIL
437-00,08	67	13676-001 or -075 (Black, Chrome)	14801-0BK
437-10,11	"	13538-000 (Black)	"
		13539-075 (Chrome)	

**FEATURES:** The universally accepted standard of quality in license lamps. Custom designed optics achieve highest license plate illumination.

448 series



## LICENSE PLATE LAMPS

**DIMENSIONS:** **448-00:** 10-15/16" L. x 3-3/8" H. x 2-7/16" D. Two .203" mtg. holes, 1-1/2" apart. **448-08:** 2-3/4" L. x 1-1/2" H. x 2-3/8" D. Two 1/4" square mtg. holes, 2" apart.

**MATERIAL:** Plastic housing, zinc plated steel bowl, painted bracket, stainless steel and nylon pigtail assembly.

**FINISH:**

**ORDER NO.:**

448-00-532	Clear, Gray Finish, License Lamp With Bracket
448-08-332	Clear, Chrome Finish, License Lamp Less Bracket
448-08-532	Clear, Gray Finish, License Lamp Less Bracket

### REPLACEMENT PARTS

12V BULB	HOUSING & VISOR ASSY.	PIGTAIL
67	13999-075 (Chrome)	14801-0BK
	13999-041 (Gray)	

449-00



## 1-1/2" DIA. LICENSE PLATE LAMP

**DIMENSIONS:** 1-1/2" diameter, half shaded indexed bezel

**MOUNTING:** Mounts into a 1-1/4" dia. hole, panel thickness .060" to .090". Protrudes 3/4" outside of panel and 1-5/16" inside of panel.

**MATERIAL:** Brass chrome plated bezel, acrylic lens, steel-zinc plated prong ring. Rubber sealed socket & pigtail assy.

**FINISH:**

**ORDER NO.:**

449-00-352	Moonstone, License Plate Lamp (2 required) or Courtesy Moonstone, Courtesy or Panel Lamp, Insulated Socket w/ Separate Ground Wire
449-13-352	

### REPLACEMENT PARTS

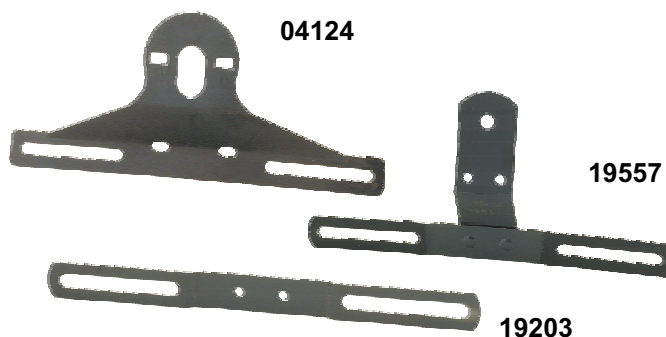
MODEL	12V BULB	PIGTAIL
449-00	67	14801-0BK
449-13	193	

## LICENSE PLATE BRACKETS

**DIMENSIONS:** 04124: 10-7/8" L. x 4-25/32" H.  
19203: 10-15/16" L. x 1" H.  
19557: 10-15/16" L. X 5" H.

**MATERIAL:** Steel  
**FINISH:** Black

**ORDER NO.:**  
04124-01 Two Stud License Bracket  
19203-01 Strap Bracket  
19557-001 Single Stud License Bracket



## MOUNTING BRACKET

**DIMENSIONS:** 4-3/8" x 3-7/16" x 1-5/8" W. Two 9/32" dia. mounting holes, 1-1/4" apart. 33/64" dia. mounting hole for 1/2" stud

**MATERIAL:** Stamped steel, 1/8" thick  
**FINISH:** Black

**ORDER NO.:**  
19077-01 For mounting pedestal lamps

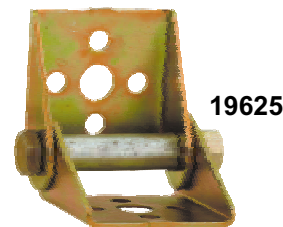


## MOUNTING BRACKET

**DIMENSIONS:** 2-1/2" x 2-1/2" x 2-3/4" overall. Four 17/64" mounting holes, one 15/32" stud hole

**MATERIAL:** Stamped steel, 3/32" thick  
**FINISH:** Zinc Plated

**ORDER NO.:**  
19625-076 Adjustable mounting bracket for pedestal type lamps



## Dome Lamps

### RECESSED MOUNTING 2-7/8" DIA. DOME LAMP

**DIMENSIONS:** Body dia. 2-7/8" o.d. x 1-3/16" deep. 4-1/4" o.d. x 2-1/32" D. Three 3/16" mounting holes on a 3-5/8" circle.

**MATERIAL:** Steel body, aluminum rim, "Lexan" polycarbonate lens, stainless steel and nylon pigtail.

**ORDER NO.:**  
035-00-132 Clear, Black Finish, 15 C.P. Dome and Access Lamp  
035-00-332 Clear, Chrome Finish, 15 C.P. Dome and Access Lamp

#### REPLACEMENT PARTS

<b>12V BULB</b>	<b>LENS</b>	<b>PIGTAIL</b>
93	03504-3	14801-0BK



### RECESSED MOUNTING 2-3/4" x 6-1/8" DOME LAMP

**DIMENSIONS:** 2-3/4" W. x 6-1/8" L., overall depth 1-5/8". Four mounting holes, 7/32" dia. Requires a 4-1/8 x 1-3/4 x 7/8 D. opening.

**MATERIAL:** **043-00:** Glass lens, zinc plated steel base, stainless steel and nylon pigtail. **043-75:** Acrylic plastic lens, zinc plated steel base, stainless steel and nylon pigtail.

**ORDER NO.:**  
043-00-332 Clear, Chrome Finish, Dome Lamp, 15 C.P.  
043-75-552 Moonstone, Dome Lamp, 15 C.P.

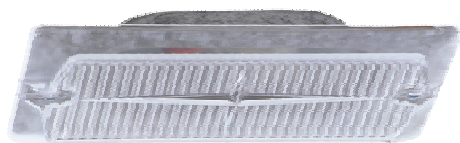
#### REPLACEMENT PARTS

<b>MODEL</b>	<b>12V BULB</b>	<b>LENS</b>	<b>PIGTAIL</b>
043-00	1003	04304-3 (Clear)	14807-0BK
043-75	1003	20014-5 (Moonstone)	14807-0BK



043 series

## RECESSED MOUNTING 3" x 7" DOME LAMP



045-00

**DIMENSIONS:** 3" W. x 7" L. Requires opening 2-1/32" W. x 5-3/8" L. x 1-1/8" D. Two 3/16" mounting holes on 6" centers.

**MATERIAL:** Zinc plated steel base, clear plastic lens, phosphorus bronze socket contacts.

**FINISH:** Zinc plated base

**ORDER NO.:** 045-00-032 Dome Lamp, 6 C.P.

### REPLACEMENT PARTS

<b>12V BULB</b>	<b>LENS</b>	<b>PIGTAIL</b>
906	20084-3	14842-0BK

## RECESSED MOUNTING 5-11/16" DIA. DOME LAMP



129-86

**DIMENSIONS:** 5-11/16" o.d. X 1-1/2" D. Fits into 4-7/16" dia. hole. Mounting: Three 13/64" holes on a 4-15/16" dia. circle.

**MATERIAL:** Steel housing, zinc plated steel socket, stainless steel lens retainer and socket spring, felt lens and mounting gasket, acrylic lens.

**ORDER NO.:** 129-86-132 Clear, Black Finish, 21 C.P. Dome and Access Lamp  
129-86-332 Clear, Chrome Finish, 21 C.P. Dome and Access Lamp

### REPLACEMENT PARTS

<b>BULB</b>	<b>LENS</b>	<b>RETAINER RING</b>	<b>PIGTAIL</b>
1141	20102-3	10031	14801-0BK

## RECESSED MOUNTING 5-11/16" DIA. DOME LAMP



130 series

**DIMENSIONS:** 5-11/16" o.d. x 1-1/2" D. Fits into 4-7/16" dia. hole. Mounting: Three 13/64" holes on a 4-15/16" dia. circle.

**MATERIAL:** Stainless steel housing, zinc plated steel socket, stainless steel lens retainer and socket spring, felt lens and mtg. gasket, Lexan or acrylic lens.

**FINISH:** Polished stainless steel

**ORDER NO.:** 130-08-332 Clear, Dome & Access Lamp, 21 C.P. With Acrylic Lens  
130-09-332 Clear, Dome & Access Lamp, 21 C.P. w/ "Lexan" Lens

### REPLACEMENT PARTS

<b>BULB</b>	<b>LENS</b>	<b>RETAINING RING</b>	<b>PIGTAIL</b>
1141	20102-3 (Clear) Acrylic 20125-3 (Clear) Lexan	10031	14801-0BK

## SURFACE MOUNTING 4-1/4" DIA. DOME LAMP



036 series

**DIMENSIONS:** 4-1/4" o.d. x 1-1/2" deep, 3" dia. lens. Three 3/16" dia. mounting holes on a 3-3/4" dia. circle.

**MATERIAL:** Steel body, "Lexan" polycarbonate lens, stainless steel and nylon pigtail.

**FINISH:** Black or Chrome

**ORDER NO.:** 036-00-332 Clear, Chrome Finish, Dome Lamp w/o Switch, 15 C.P.  
036-05-152 Moonstone, Black Finish, Dome Lamp w/ Switch, 15 C.P.  
036-05-352 Moonstone, Chrome Finish, Dome Lamp w/ Switch, 15 C.P.

### REPLACEMENT PARTS

<b>MODEL</b>	<b>12V BULB</b>	<b>LENS</b>	<b>PIGTAIL</b>	<b>SWITCH</b>
036-00	93	03504-3 (Clear)	14801-0BK	-
036-05	1003	03504-5 (Moonstone)		26035

## SURFACE MTG. 6" & 5-5/16" DIA. DOME LAMPS

046 series

**DIMENSIONS:** Flange Model: 6" o.d. x 1-17/32" H. (046-10,11: 2-3/8" H.)  
Three 5/32" mtg. holes on a 5-5/8" circle. Flangeless Model:  
5-5/16" o.d. x 1-15/32" H. Three 13/64" mtg. holes on a  
63/64" circle.

**MATERIAL:** Aluminum body, moonstone polypropylene plastic lens, zinc  
plated steel socket and socket bracket. (046-10, 11: Lexan  
lens)

**FINISH:** Aluminum

### ORDER NO.:

046-00-052 Dome Lamp w/o Switch, Flange Model w/ 1141 Bulb  
046-05-052 Dome Lamp With Switch, Flange Model w/ 1141 Bulb  
046-10-052 Hi-Hat Lexan Lens w/o Switch, Flange Model 1156 Bulb  
046-11-052 Hi-Hat Lexan Lens w/ Switch, Flange Model, 1156 Bulb  
046-75-052 Dome Lamp Less Switch, Flangeless Model w/ 1141 Bulb  
046-76-052 Dome Lamp With Switch, Flangeless Model w/ 1141 Bulb  
046-99010 Dome Lamp w/o Switch, Flange Model Dbl. Contact, 1142  
Bulb  
046-99011 Dome Lamp w/ Switch, Flange Model, Dbl. Contact, 1142  
Bulb

### REPLACEMENT PARTS

MODEL	12V BULB	LENS	SWITCH	PIGTAIL
046-00,05,75,76	1141	20080-5	26035	14807-0BK (Less Switch)
046-10, 11	1156	20159-5	N/A	14807-0BK (Less Switch)
046-99010	1142	20080-5	N/A	14800-0BK (Less Switch)
046-99011	1142	20080-5	N/A	14800-0BK (Less Switch)

**FEATURES:** Twist off lens, Corrosion-proof, Parabolic shaped body gives  
out maximum light output.



046-10, 11  
Hi Hat

## SURFACE MOUNTING 3-3/4" DIA. DOME LAMP

049-00

**DIMENSIONS:** 3-3/4" o.d. x 1-7/16" H. Three 3-16" mtg. holes on a 2-1/4"  
circle.

**MATERIAL:** Steel base, acrylic lens, zinc plated steel socket, stainless  
steel and nylon pigtail. Special Order lens available in clear  
Lexan (Part #20108-3)

**FINISH:** Gray

### ORDER NO.:

049-00-552 Moonstone, Dome Lamp  
049-99010 Moonstone, Dome Lamp, Double Contact

### REPLACEMENT PARTS

MODEL	12V BULB	LENS	RET. RING	PIGTAIL
049-00	67	20023-5 (Moonstone)	10011	14801-0BK
049-99010	1004	20023-5 (Moonstone)	10011	14682-000



## SURFACE MOUNTING 2" x 4" DOME LAMP

**DIMENSIONS:** 2" W. x 4" L. x 1" H. Two 13/64" mtg. holes on 3" centers  
**MATERIAL:** White ABS plastic base, acrylic lens, non-ferrous electrical  
system.

**FINISH:** White

### ORDER NO.:

051-00-732 Clear, Dome or Access Lamp, Two 2 C.P. Bulbs

### REPLACEMENT PARTS

12V BULB	LENS
1895	20062-3 (Clear)

**FEATURES:** Snap on lens



051-00



130-06



### RECESSED MOUNT - STAINLESS STEEL

**DIMENSIONS:** 5-11/16" o.d. x 1-1/2" D. Fits into 4-7/16" dia. hole. Mounting:

Three 13/64" holes on a 4-15/16" dia. circle. (ATA mtg.)

**MATERIAL:** Stainless steel housing, stainless steel lens retainer, zinc plated steel socket, stainless steel and nylon electrical system, felt lens and mounting gasket, acrylic lens

**FINISH:** Polished Stainless Steel

**ORDER NO.:**

130-06-332 Clear, Back-Up Lamp

#### REPLACEMENT PARTS

**12V BULB**

1156

**LENS**

20102-3

**PIGTAIL**

14801-0BK

**SNAP RING**

10031

140-00



### SEALED LAMP

**DIMENSIONS:** 4-5/16" o.d. x 2-1/16" deep lamp. Grommet fits 4-1/2" hole, grommet o.d. is 5-1/4"

**MATERIAL:** "Lexan" lamp, vinyl grommet

**FINISH:** Black grommet and white lamp housing

**ORDER NO.:**

140-00-132 Clear, Back-Up Lamp w/ Grommet and Plug-in Pigtail

140-75-732 Clear, Lamp Only

#### REPLACEMENT PARTS

**PIGTAIL**

14977-000

**GROMMET**

90386

**FEATURES:** Lamp and grommet interchangeable with all competitors, one lamp back-up system.

143-76



### 6-1/2" OVAL SEALED LAMP

**DIMENSIONS:** Lamp: 6-1/2" x 2-3/8" W. x 2-1/2" D. Grommet: 7-5/8" L. x 3-5/16" W. x 1" D. Grommet mounts in 6-3/4" L. x 2-1/2" W. oval hole.

**MATERIAL:** Polycarbonate base and lens

**ORDER NO.:**

143-03-132 Clear, Back-up lamp with grommet & plug-in pigtail

143-76-732 Clear, Back-up lamp Only

#### REPLACEMENT PARTS

**PIGTAIL**

14977-000

**GROMMET**

90402

**FEATURES:** Lamp and grommet are interchangeable with all competitors.

169-02



### RECESSED - RUBBER

**DIMENSIONS:** 5-1/2" o.d. mounts in a 4-1/2" dia. x 1-1/2" deep hole. Three 7/32" dia. mtg. holes on a 4-15/16" dia. circle. (ATA mtg.)

**MATERIAL:** Synthetic rubber housing, zinc plated steel socket, brass grounding straps, nylon & stainless steel pigtail, acrylic lens

**FINISH:** Black

**ORDER NO.:**

169-02-132 Clear, Back-Up Lamp

#### REPLACEMENT PARTS

**12V BULB**

1156

**LENS**

20102-3

**PIGTAIL**

14801-0BK

## RECESSED - PLASTIC

**DIMENSIONS:** 5-7/16" o.d. mounts in a 4-1/2" dia. x 1-5/8" D. hole. Three 13/64" dia. mtg. holes on a 4-15/16" dia. circle. (ATA mtg.)  
**MATERIAL:** Polypropylene plastic housing, zinc plated steel socket, brass grounding straps, nylon and stainless steel pigtail, felt lens gasket, acrylic lens.

**FINISH:** Black

**ORDER NO.:**

189-75-132 Clear, Back-Up Lamp

### REPLACEMENT PARTS

**12V BULB**

1156

**LENS**

20102-3

**PIGTAIL**

14801-0BK

**SNAP RING**

10031



189-75

## BACK-UP ALARMS

For all types of emergency and maintenance vehicles, buses, fire trucks, construction equipment, lift trucks or utility vehicles. A variety of sizes, voltages and volume choices. Federal and State laws require Back-up alarms to be installed on off the road construction vehicles. Beep rate for all units is approx. 80-90 per minute.

**DIMENSIONS:** 3" H. x 4" W. x 1-5/8" D. Weight: 7.4 oz. Four 19/64" mtg. holes 2-9/32" apart.

**MATERIAL:** Polypropylene Housing

**FREQUENCY:** 1250 Hz Pulsed

**FINISH:** Black

**ORDER NO.:**

893-00-102

### LIGHT TO MEDIUM DUTY

Light to Medium Duty Vehicles, Forklifts, 12V Electrical System, 0.250 Ampere, Conforms to SAE J994 Type C, Sound Level: 97db  $\pm$  4 db at 4 Ft. Apart

894-00-104

Light to Medium Duty Vehicles, Forklifts, 12V to 48V Electrical System, 0.250 Ampere, Conforms to SAE J994 Type C, Sound Level: 97db  $\pm$  4 db at 4 Ft. Apart

**ORDER NO.:**

895-00-104

### MEDIUM DUTY

Medium Duty Vehicles, Forklifts, 12V - 24V Electrical System, 0.500 Ampere, Conforms to SAE J994 Exceeds Type C, Sound Level: 102 db  $\pm$  4 db at 4 Ft. Apart

**ORDER NO.:**

896-00-102

### HEAVY DUTY

Transit-Mix, Dump, and Garbage Trucks, Cranes and Forklifts

Heavy to Extra Heavy Duty Vehicles, 12V Electrical System, 0.500 Ampere, Conforms to SAE J994 Type B, Sound Level: 107db  $\pm$  4 db at 4 Ft. Apart



893  
894  
895  
896

## Utility and Fog Lamps

### SEALED BEAM FOR AUXILIARY LIGHTING PURPOSES

**DIMENSIONS:** 5" dia. x 3" deep lamp body. Mounting bracket 1-1/4" x 5-1/8". Six 17/64" mounting holes.

**MATERIAL:** Steel lamp body & bracket assembly.

**FINISH:** Black

**ORDER NO.:**

040-00-132

Clear, Utility Lamp, 12V Bulb, 4411

### REPLACEMENT PARTS

**12V BULB**

4411

**KEEPER  
SPRING**

10004

**RIM**

25504-001

**MTG. BRKT.  
ASSY.**

19505-000



040-00

## 107 series



### BAKED ENAMEL FINISH

**DIMENSIONS:** 5" o.d. x 3" deep body. 2" square bracket with 5 holes. 15/32" dia. center hole, four 17/64" dia. holes on a 1-1/8" dia. circle.  
**MATERIAL:** Steel body, rim & mounting brackets, glass sealed beam.  
**FINISH:** Black

**ORDER NO.:**  
 107-09-132 Clear, Utility Lamp with Bracket, 12V Bulb, 4411  
 107-10-112 Amber, Fog Lamp with Bracket, 12V Bulb, 4415A

### REPLACEMENT PARTS

<b>12V BULB</b>	<b>BRACKET</b>	<b>KEEPER SPRING</b>	<b>RIM</b>
4411	19209-76	10004	25520-001
4415A			

## 108-00



### RUBBERIZED SEALED BEAM

**DIMENSIONS:** 4-3/4" dia., 3" depth, 5/16" dia. x 1" long mtg. stud (5/16" sq. mounting hole required).  
**MATERIAL:** Elastomer housing, glass sealed beam bulb, zinc plated steel mounting brackets & hardware.  
**FINISH:** Black

**ORDER NO.:**  
 108-00-132 Utility Lamp With 4411 Bulb  
 108-01-100 Rubber Housing Only

### REPLACEMENT PARTS

**12V BULB - 4411**

**FEATURES:** Durable, rugged all purpose lamp in weatherproof housing for long life. For use on all types of highway and off-road vehicles. Housing protects sealed beam lamp from shock and vibration, no rust or corrosion. Lamps snap in for fast, easy replacement.

## 108-75



### PORTABLE MAGNETIC WORK/TROUBLE LAMP

**DIMENSIONS:** 7-5/8" H. x 4-3/4" W. x 3-1/4" deep. Magnetic dia. Is 3-7/32".  
**MATERIAL:** Black rubber housing, zinc plated steel brackets  
**FINISH:** Black

**ORDER NO.:**  
 108-75-132 Magnetic Base Trouble Lamp

### REPLACEMENT PARTS

**12V BULB - 4411**

**FEATURES:** On-Off switch, 90# pull magnet, 15 ft. wire w/ cigarette lighter plug, Freestanding, Mount to any ferrous surface, Shock mounted bulb.

**NOTE:** The use of any magnetic mounted warning lamp on the outside of a moving vehicle is not recommended and is at the sole discretion and risk of the user.

## 109-00



### SEALED BEAM - RECESSED PAR 36

**DIMENSIONS:** 6-7/32" o.d. mounts in 5-1/16" dia. x 1-1/2" D. body hole. Four 9/32" dia. mtg. holes on a 5-5/8" dia. circle.

**MATERIAL:** Steel housing, felt mtg. Gasket  
**FINISH:** Black

**ORDER NUMBER:**  
 109-00-132 Clear, Utility Lamp

### REPLACEMENT PARTS

<b>12V BULB</b>	<b>KEEPER SPRING</b>
4411	10004

## STEEL PAR 46

**DIMENSIONS:** 6" dia. x 4-11/16" deep. 7/16" dia. x 1-11/16" L. mtg. stud.

**MATERIAL:** Steel body and rim.

**FINISH:** Black or Chrome

### ORDER NO.:

500-00-100	Black Housing & Rim, Without Bulb
500-00-300	Chrome Housing & Rim, Without Bulb
500-00-112	Amber, Black Housing, Fog Lamp
500-00-132	Clear, Black Housing, Driving Lamp
500-00-312	Amber, Chrome Housing, Fog Lamp
500-00-332	Clear, Chrome Housing, Driving Lamp
500-02-132	Clear, Black Housing, Tractor Lamp w/ Bracket 19256
500-02-332	Clear, Chrome Housing, Tractor Lamp w/ Bracket 19256
500-06-332	Clear, Chrome Housing, Spot Light w/ Handle & Switch

### REPLACEMENT PART

MODEL	12V BULB	KEEPER SPRING	RIM	BRACKET
500-00	4412 or 4412A (Amber)	06079-76	05003-001 or -075	19256-01
500-02	4419		(Black, Chrome)	
500-06	4435			

**NOTE:** Housing only fits bulbs 4412, 4412A, 4413, 4419, 4530, 4570, 4571, 4013, 4019, & 4535.



500 series

## STEEL PAR 36

**DIMENSIONS:** 5" dia. x 3" deep lamp body. Four 17/64" holes on a 2" square mounting bracket.

**MATERIAL:** Steel lamp body and bracket assembly.

**FINISH:** Black

### ORDER NO.:

504-00-132	Clear, Utility Lamp With Bracket 19625
------------	--

### REPLACEMENT PARTS

12V BULB	BRACKET	KEEPER SPRING	RIM
4411	19625-076	10004	25520-001



504-00

## Snow Plow Lamp Adaptors

### ADAPTOR KITS

#### FOR FASTER INSTALLATION

Pre-assembled factory made harnesses make snowplow lamp installation easier & more reliable. Start with the 779-15-132 or 780-15-132 kit and add adaptor kits below as required depending on vehicle.

ORDER NUMBER	HEADLAMP DESCRIPTION	BULB NUMBER	BULB TYPE
44522	Four headlamp Vehicles	4651, H4651, HP4651, 4652	1A/2A
44523	Halogen bulb, some Ford and Dodge	9004	HB1
44524	For some late Chev. GMC, & Jeep trucks	H4701, H4703	LF/UF
44535	Halogen bulb some Chev & GMC	9005, 9006	HB3/HB4
44561	Halogen bulb some later Fords	9007	Hb5





775-00



## STEEL PAR 56

**DIMENSIONS:** 7-13/16" o.d. 7" sealed beam bulb, 7/16" dia. x 1-7/16" L. mounting stud.

**MATERIAL:** Steel bowl and rim

**FINISH:** Black

**ORDER NO.:**

775-00-100 Headlight, No Bulb

775-00-132 Clear, Headlight

### REPLACEMENT PARTS

**12V BULB**

6015

**RIM**

07761-01 (Black)

**KEEPER SPRING**

06003-76

**FEATURES:** Auxiliary or replacement headlight, giant 7" dia. sealed beam unit w/ high/low beam. SAE ball-type mounting.

779 series



## SNO-LASER

**DIMENSIONS:** 13-11/16" W. x 7-1/4" H. x 6-11/32" D., SAE ball-type mtg. 7/16" dia. stud.

**MATERIAL:** Aluminum die cast housing, aluminum stamped rim, stainless steel pedestal, stainless steel screws, acrylic turn signal and parking lamp lens. Clear headlamp & amber turn signal.

**FINISH:** Satin black enamel

**ORDER NO.:**

779-01-132 Snow Plow Combination Lamp, Driver's Side (1 Lamp Only)

779-02-132 Snow Plow Combination Lamp, Passengers's Side (1 Lamp Only)

779-03-132 Snow Plow Lamp Kit, Includes Two Combination Lamps, Four 10 Ft. Color Coded Wires, Switch & Installation Sheet

779-04-132 Lamp, Driver's Side, Meyer

779-05-132 Lamp, Passenger's Side, Meyer

779-06-132 Pre-wired Kit, Two Lamps, Harnesses, Switches, Etc. Meyer

779-07-132 Lamp, Driver's Side, Fisher

779-08-132 Lamp, Passenger's Side, Fisher

779-09-132 Kit of Two Lamps (Only)-No Dash Harness, Fisher

779-15-132 Complete Pre-wired Kit - Two Lamps (779-04 & 779-05)

Underhood Harness Assy., Flasher, Switch & Connectors

779-16-132 Kit of Two Lamps (Only) - No Dash Harness, Meyer

779-19-132 Kit of Two Lamps (Only) - No Dash Harness, Truck-Lite

779-21-132 Kit of Two Lamps - Underhood Harness for Large Trucks - Truck-Lite

779-22-132 Kit of Two Lamps (Only) w/ Positive Ground Wire for Turn Signal

779-23-132 Snow Plow Combination Lamp, Driver's Side w/ Positive Ground Wire for Turn Signal (1 Lamp)

779-24-132 Snow Plow Combination Lamp, Passenger's Side w/ Positive Ground Wire for Turn Signal (1 Lamp)

### REPLACEMENT PARTS

	12V BULB	LENS	RIM	LENS GASKET	SPACER BUMPER
HEADLAMP	H6054	-	25549-072	-	17033
SIGNAL	1157	20126-1 (Amber)	-	22146	-

UNDER HOOD DASH HARNESS FOR 779-15: 44525

**FEATURES:** Distinct modern design, low profile, Hi-output double optic lens, highest quality material, unique light pipe, strong rust-proof aluminum housing, durable construction "See-thru" configuration allows for best visibility, Halogen bulb, only 2 screws to remove headlamp.

**NOTE:** 779-15 Needs no cutting, splicing, taping or wire mess. Best electrical reliability. For vehicles with two sealed beam headlamps, round or rectangular. Fits popular bulb numbers among others: 6014, H6014, 6015, H6024, 6017, H6017, 6052, H6054, Hp6054.



Tell-Tale  
Light  
Pipe  
Feature

## SNO LASER 2

### COMBINATION HEADLAMP, TURN SIGNAL & PARKING LAMP

**DIMENSIONS:** 12-1/4" L. x 6-5/16" H. x 5-5/8" deep.

**MATERIAL:** Housing and rim are modified polycarbonate. Turn signal lens is "Lexan". Includes high/low beam clear halogen headlamp.

**FINISH:** Black

#### ORDER NO.:

780-01-132	Snow Plow Combo Lamp, Driver Side (1 Lamp Only)
780-02-132	Snow Plow Combo Lamp, Pass. Side (1 Lamp Only)
780-03-132	Snow Plow Lamp Kit, Includes (2) Combination Lamps, Four 10 Ft. Color Coded Wires, Switch and Instructions
780-04-132	Lamp, Driver Side, Meyer Systems Control (The Boss)
780-05-132	Lamp, Pass. Side, Meyer, Systems Control (The Boss)
780-06-132	Pre-wired Kit, Two Lamps, Harnesses, Switch, Meyer
780-07-132	Lamp, Driver Side, Fisher
780-08-132	Lamp, Pass. Side, Fisher
780-09-132	Kit of (2) Lamps - No Dash Harnesses, Switches Fisher
780-15-132	Complete Pre-wired Kit, (2) Lamps, Underhood Harness, Switch
780-16-132	Kit of Two Lamps (Only) - No Dash Harness, Meyer
780-19-132	Kit of Two Lamps (Only) - No Dash Harness, Truck-Lite
780-23-132	Kit of Two Lamps - Underhood Harness, 2003 & up, Dodge
780-24-132	Snow Plow Combo, Driver Side, 2003 & up Dodge (1 Lamp Only)
780-25-132	Snow Plow Combo, Pass. Side, 2003 & up Dodge (1 Lamp Only)

#### REPLACEMENT PARTS

	BULB 12V	LENS	RIM	LENS GASKET	BULB SEAT
HEADLAMP	HP6545	-	25048	-	22183
SIGNAL	1157	20157-1	-	22182	-
FEATURES:	Low profile, one bulb turn signal, only two screws to re-bulb turn signal, all steel parts are zinc plated w/ clear iridite, glass sealed beam bulb, universal adapter program.				

**NOTE:** See wire adaptor kits for custom installation.



780 series

## X-BEAM SNOW PLOW LAMP

### COMBINATION HEADLAMP, TURN SIGNAL & PARKING LAMP

**DIMENSIONS:** 14-1/2" W. x 7-1/2" H. x 5-1/2" D.

**MATERIAL:** Polycarbonate housing, steel bracket, stainless steel hardware mounts housing to bracket.

**FINISH:** Black housing and black powder-coated bracket.

#### ORDER NO.:

782-01-132	Lamp, Driver Side, 1 Lamp Only, 4 Wire Harness (No Plug)
782-02-132	Lamp, Pass. Side, 1 Lamp Only, 4 Wire Harness (No Plug)
782-03-132	Kit of 2 Lamps, Includes (2) Combo Lamps, Four 10 Ft. Color-Coded Wires, Switches & Instructions
782-04-132	Lamp, Driver Side, 1 Lamp Only, 4 Wire Harness w/ Old Boss Plug
782-05-132	Lamp, Pass. Side, 1 Lamp Only, 4 Wire Harness w/ Old Boss Plug
782-06-132	Pre-Wired Kit, Two Lamps, Harnesses, Switch, 4 Wire w/ Old Boss Plug
782-07-132	Lamp, Driver Side, 1 Lamp Only, 6 Wire Harness w/ Truck-Lite Plug
782-08-132	Lamp, Pass. Side, 1 Lamp Only, 6 Wire Harness w/ Truck-Lite Plug
782-09-132	Kit of 2 Lamps, Includes (2) Combo Lamps, Underhood Harness, Switch, Flasher & Instructions
782-10-132	Kit of 2 Lamps, 6 Wire Harness w/ Truck-Lite Plug (No other Accessories Included)
782-11-132	Kit of 2 Lamps & Underhood Harness for 2003 & up Dodge

#### REPLACEMENT PARTS

HEADLAMP HSG.	HEADLAMP BULB	HEADLAMP RIM	TURN SIGNAL RIM	AMBER LED LAMP
13550	27170	25052	25053	95442

**FEATURES:** LED turn signal, shock-absorbing bracket, single post mounting, brighter halogen bulb than previous models.

**NOTE:** See wire adaptor kit for custom installation.



782