

035-03, 10



## 360 DEGREE WARNING LAMP

**DIMENSIONS:** 4-1/2" dia. x 4-9/16" H. Three 3/16" mtg. holes on a 3-3/4" cir.  
**MATERIAL:** Steel base, "Lexan" lens, volara and sponge gaskets, zinc plated steel socket, stainless steel & nylon pigtail.

**ORDER NO.:**  
 035-03-012 Amber, Warning Lamp, 3 Amp. Complete Kit, 50 C.P.  
 035-03-022 Red, Warning Lamp, 3 Amp. Complete Kit, 50 C.P.  
 035-10-012 Amber, Warning Lamp, 3 Amps, 50 C.P.  
 035-10-022 Red, Warning Lamp, 3 Amps, 50 C.P.

### REPLACEMENT PARTS

12V BULB	LENS	LENS GASKET	PIGTAIL	SWITCH
1195	20017-1 or 2 (Amber, Red)	22009	14801-0BK	26001

**FEATURES:** Kits consist of lamp, coil of wire, flasher, switch and installation instructions.

528 series



## 360 DEGREE ROTARY LAMP

**DIMENSIONS:** 7" high, 5-1/2" lens diameter.  
**MATERIAL:** Stainless steel dome clamp, acrylic dome & condensing lens  
**FINISH:** Chrome

**ORDER NO.:**  
 528-00-312 Amber, Revolving Warning Light, 50 C.P. Bulb  
 528-00-322 Red, Revolving Warning Light, 50 C.P. Bulb  
 528-75-312 Amber, Revolving Warning Lamp, 50 C.P., Magnetic Base  
 528-75-322 Red, Revolving Warning Lamp, 50 C.P., Magnetic Base

**SPECIAL ORDER:** Blue domes are available on special order.

### REPLACEMENT PARTS

12V BULB	12V BULB	DOME CLAMP RIM	12V MOTOR	CLEAR CONDENSING LENS
1195	20076-1, 2, 4 (Amber, Red, Blue)	29008	95151-2	20083-3

**FEATURES:** For permanent mounting on roof of police, emergency, maintenance, service, & highway dept. vehicles. Projects intense beams of light thru 3 precision lenses, 90 flashes per minute. Portable version has 3 iron grip magnets on base. For temporary mounting on roofs of vehicles or inside vehicle against rear view window (drivers vision protected by snap on shield). Used near accident sites, construction areas, school crossings. Furnished w/ 9 ft. wire & cigarette lighter plug.

**NOTE:** The use of any magnetic mounted warning lamp on the outside of a moving vehicle is not recommended & is at the sole discretion & risk of the user.

545 series



## KOJAC LAMP

**DIMENSIONS:** 7-5/16" L. x 5-7/16" W. x 5" H., 10' long coil-cord.  
**MATERIAL:** "Lexan" polycarbonate dome, aluminum base, clamp ring and polished reflector

**ORDER NO.:**  
 545-75-312 Amber, Magnetic Mount Revolving Lamp, 50 C.P., 3.1 Amps. at 12V  
 545-75-322 Red, Magnetic Revolving Lamp, 50 C.P., 3.1 Amps. at 12V  
 545-76-312 Amber, Magnetic Revolving Lamp, Halogen Bulb, 100 C.P., 4.0 Amps. at 12V  
 545-76-322 Red, Magnetic Revolving Lamp, Halogen Bulb, 100 C.P., 4.0 Amps. at 12V

**SPECIAL ORDER:** Blue & Green domes are available.

### REPLACEMENT PARTS

12V BULB	DOME	MOTOR	CLAMP RIM ASSY.	PLUG AND WIRE ASSY.
1195	20130-1, 2, 4, 7	95206-2(12V)	29512	14936
795 halogen	(Amber, Red, Blue, Green)			

**NOTE:** The use of any magnetic mounted warning lamp on the outside of a moving vehicle is not recommended & is at the sole discretion & risk of the user.

### MINI LIGHT BARS

#### 2 LAMP 360 DEGREE ROTARY LAMP HALOGEN BULB

**DIMENSIONS:** 16-1/8" L. x 7-1/4" W. x 4-3/4" H. Four mounting holes on a 12-3/8" x 4-7/16" rectangle, .192" dia. holes.

**MATERIAL:** Plastic Lexan dome, aluminum base & reflector, plastic gear & worm.

**ORDER NO.:**

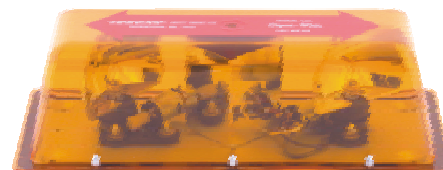
546-01-012 Amber, Permanent Mount Revolving Lamp 100 C.P., 7.8 Amps  
 546-01-022 Red, Permanent Mount Revolving Lamp, 100 C.P., 7.8 Amps  
 546-76-012 Amber, Magnetic Mount Revolving Lamp, 100 C.P., 7.8 Amps  
 546-76-022 Red, Magnetic Mount Revolving Lamp, 100 C.P., 7.8 Amps

**SPECIAL ORDER:** Blue domes are available on special order.

#### REPLACEMENT PARTS

12V BULB	DOMES	MOTOR	PLUG AND WIRE ASSY.
795	20132-1, 2, 4 (Amber, Red, Blue)	95206-2 (12V)	14553

546-01, 76



### STROBE SERIES - QUAD FLASH

**ORDER NO.:**

546-04-014 Amber, Permanent Mount Mini Light Bar, 2 Amps.  
 546-04-024 Red, Permanent Mount Mini Light Bar, 2 Amps.  
 546-05-014 Amber, Magnetic Mount Mini Light Bar, 2 Amps.  
 546-05-024 Red, Magnetic Mount Mini Light Bar, 2 Amps.

**SPECIAL ORDER:** Blue domes are available on special order. Double flash available on models 546-04, 05

#### REPLACEMENT PARTS

STROBE TUBE ASSEMBLY	OUTER DOME	INNER FRESNEL LENS	POWER SUPPLY MODULE
27154-4	20132-1, 2, 4 (Amber, Red, Blue)	20160-3	95256-4

**FEATURES:** High intensity flash, Two 15 joules quad flashing strobe heads, Flash rate: 110 quad flashes per minute, Current draws only 2.0 amps., Operates at 12-24 V.D.C.

**NOTE:** The use of any magnetic mounted warning lamp on the outside of a moving vehicle is not recommended & is at the sole discretion & risk of the user

546-04, 05



### MEDIUM TO HEAVY DUTY STROBE

**DIMENSIONS:** **547-00:** 7-1/2" H. x 7-9/16" dia., two mtg. holes 3-1/2" apart.

**548-00:** 7-3/4" H. x 8-11/16" dia., two mtg. holes 7" apart.

**MATERIAL:** Lexan dome lens, acrylic dome (dust cover), anodized alum. housing. Extruded rubber mounting gasket.

**ORDER NO.:**

547-00-312 Amber, Single Flash Strobe, 8 Joules, 1.8 Amps. at 12V  
 547-01-314 Amber, Double Flash Strobe, 15 Joules, 2 Amps. at 12V  
 548-00-312 Amber, Single Flash w/ Dust Cover, 8 Joules, 1.8 Amps. Atb 12V  
 548-01-314 Amber, Double Flash w/ Dust Cover, 15 Joules, 2 Amps. at 12V

**SPECIAL ORDER:** Clear, Red, Blue & Green domes are available.

#### REPLACEMENT PARTS

MODEL	FLASH TUBE	DOMES LENS	POWER SUPPLY MODULE	TIMING HEAD AND SOCKET MODULE	OUTER DOME (DUST COVER)
547-00	27138	20134-1, 2, 3, 4, 7	95208-2	95209-2	-
547-01	27138	(Amber, Red, Clear,	95241-2		
548-00	27138	Blue, Green)	95208-2	(for all models)	20135
548-01	27148		95240-2		20135

**FEATURES:** Double flash models have Hi-Lo feature & operates at 12 or 24V. For Hi-Lo use see switch #26510-2 at 12V & 26510-3 at 24V. Single flash meets SAE J1318 Class 2 & 3. Double flash meets SAE J1318 Class 1.

☞ MOST MODELS AVAILABLE IN QUAD FLASH. ☞

547



548



550-00



## 2 BULB ROTARY LAMP

**DIMENSIONS:** 8-1/2" dia. x 8" H. Three 17/64" dia. mtg. holes on a 6-1/4" dia. center.

**MATERIAL:** Stainless steel rim, aluminum bowl, sponge rubber mounting gasket, brass commutator

### ORDER NO.:

550-00-312 Amber, Two Bulb Revolving Lamp, Amps at 12V: 6.5  
550-00-322 Red, Two Bulb Revolving Lamp, Amps at 12V: 6.5  
550-99005 Amber, Pennsylvania Replacement Lamp, Amps at 12V: 6.5

**SPECIAL ORDER:** Red bulbs, clear or blue domes, & radio suppressed models available on special order.

### REPLACEMENT PARTS

12V BULB	DOME	MOTOR(12V)	CLAMP RIM
7400 Clear	20098-1, 2, 3, 4	95221-2	29515-000
7400R Red (Amber, Red, Clear, Blue)			

### MISCELLANEOUS COMMON PARTS

95225 Brush	14966-000 10 Ft. Wire Assy.	12150-77 Toggle Bolt
12151 Thumb Screw	11068 Retainer Washer	26001 Switch
11069 Cup Washer	22131 Dome Gasket	22130 Mounting Gasket
24510 Brush Holder Assy.		

**FEATURES:** Integrated design, 2 bearing motor & geartrain, sealed motor doesn't need lubrication, quick-snap spring loaded dome latch, special nut & bolt model available. Pre-assembled lead wire, saves installation time. Mounting gasket- 1/2" thick, closed cell sponge rubber mtg., Rebulb lamps w/o tools, special thumb screw included, #7400 sealed beam bulb specially designed for rotary lamps, Neoprene rubber dome gasket seals out weather and debris, clutch prevents motor burnout.

551



## 360 DEGREE ROTARY LAMP

**DIMENSIONS:** 11" dia. x 8-5/32" H. Three 17/64" dia. mtg. holes on a 6" dia. center.

**MATERIAL:** Stainless steel base, sponge rubber mounting gasket, brass commutator.

### ORDER NO.:

551-00-312 Amber, Four Bulb Revolving Lamp, 11 Amps. at 12V  
551-00-322 Red, Four Bulb Revolving Lamp, 11 Amps. at 12V

**SPECIAL ORDER:** Red bulbs, Clear & Blue domes and radio suppressed models available on special order.

### REPLACEMENT PARTS

MODEL	12V BULB	DOME	MOTOR(12V)	CLAMP RIM
551	7400 (Clear)	20099-1, 2, 4	95222-2	29516-000
	7400 R (Red)	(Amber, Red, Blue)		

**FEATURES:** Integrated design, 2 bearing motor and geartrain, Sealed motor doesn't need lubrication, Quick-snap spring loaded dome latch, special nut & bolt model available, Pre-assembled lead wire, saves installation time, mounting gasket, 1/2" thick, closed cell sponge rubber mtg., Rebulb lamps w/o tools, special thumb screw included, #7400 sealed beam bulb specially designed for rotary lamps, Neoprene rubber dome gasket seals out weather and debris, clutch prevents motor burnout, On-Off switch & all mounting hardware included.

### MINI-STROBE

**DIMENSIONS:** 3-7/8" H. (not including magnet) x 4" dia. **553-01:** base threaded for 1/2" pipe mount, or two knockouts for bolt mtg. 2-3/4" apart.

**MATERIAL:** "Lexan" polycarbonate lens, die cast base.

**ORDER NO.:**

- 553-01-312 Amber, Mini Strobe for 1/2" Pipe Mount w/ knockouts for Bolt Mounting
- 553-01-322 Red, Mini Strobe for 1/2" Pipe Mount w/ knockouts for Bolt Mounting
- 553-02-312 Amber, Portable Version Mini Strobe Warning Lamp, Includes 70# Pull Magnet, 6' Wire Assembly, Cigarette Plug Adapter and Eye Shield
- 553-02-322 Red, Portable Version Mini Strobe Warning Lamp, Includes 70# Pull Magnet, 6' Wire Assembly, Cigarette Plug Adapter and Eye Shield

**SPECIAL ORDER:** 24 or 36 Volts and Clear, Blue & Green domes.

#### REPLACEMENT PARTS

**FLASH TUBE**  
27147

**LENS**  
20150-1, 2, 3, 4, 7  
(Amber, Red, Clear, Blue, Green)

**FEATURES:** 3 Joules, low profile, brilliant flash, for automotive & industrial use, mounting options, draws less than 1/2 amp., Operates through temp. range of -20 degrees to 120 degrees F.

**NOTE:** The use of any magnetic mounted warning lamp on the outside of a moving vehicle is not recommended & is at the sole discretion & risk of the user.



553 series

### HIGH POWER STROBES

**DIMENSIONS:** 6-3/4" o.d., two 1/4" dia. mounting holes on 6-7/8" centers.

**554:** 8-1/2" high. **555:** 6-1/2" high.

**MATERIAL:** Anodized aluminum bowl, "Lexan" polycarbonate lens, sponge rubber mounting gasket, acrylic dust cover

**ORDER NO.:**

- 554-00-312 Amber, High Output-Single Flash Warning Lamp, 15 Joules
- 554-00-322 Red, High Output-Single Flash Warning Lamp, 15 Joules
- 554-01-314 Amber, High Output-Double Flash Warning Lamp, 23 Joules
- 554-01-324 Red, High Output-Double Flash Warning Lamp, 23 Joules
- 554-03-314 Amber, High Output Double Flash Warning Lamp W/ Dust Cover, 23 Joules
- 554-03-324 Red, High Output Double Flash Warning Lamp W/ Dust Cover, 23 Joules
- 555-00-312 Amber, High Output, Single Flash Warning Lamp, 15 Joules
- 555-00-322 Red, High Output, Single Flash Warning Lamp, 15 Joules
- 555-01-314 Amber, High Output, Double Flash Warning Lamp, 23 Joules
- 555-01-324 Red, High Output, Double Flash Warning Lamp, 23 Joules

**SPECIAL ORDER:** Clear, Blue and Green domes.

#### REPLACEMENT PARTS

MODEL	FLASH TUBE	DOME LENS	POWER SUPPLY MODULE	DUST COVER
554-00	27138	20111-1, 2, 3, 4, 7	95208-2	-
554-01, 03	27148	(Amber, Red, Clear, Blue, Green)	95240-2	20127
555-00	27138	20144-1, 2, 3, 4, 7	95208-2	-
555-01	27148	(Amber, Red, Clear, Blue, Green)	95240-2	-

**FEATURES:** "Hi" Daytime Use, "Low" Nighttime Use, See switch #26510-2 12V & 26510-3, 24V required for Hi-Lo hookup. Double flash models have Hi-Lo feature & operate at 12V or 24V, 3.6 amp. power consumption at 12.8 V.D.C., Single flash lamps meet SAE J1318 Class 2 & 3, Double flash lamps meet SAE J1318 Class 1.



554



555



## 556 series



### LOW PROFILE, MEDIUM DUTY

**DIMENSIONS:** 6" H. x 6" o.d. **556-00, 01:** Two mtg. holes on 3-1/2" center.

**MATERIAL:** "Lexan" polycarbonate lens

**ORDER NO.:**

556-00-312	Amber, Single Flash Flat Mount Warning Lamp, 7 Joules
556-00-322	Red, Single Flash Flat Mount Warning Lamp, 7 Joules
556-01-314	Amber, Double Flash Flat Mount Warning Lamp, 15 Joules
556-01-324	Red, Double Flash Flat Mount Warning Lamp, 15 Joules
556-02-312	Amber, Single Flash Magnetic Mount Warning Lamp, 7 Joules
556-02-322	Red, Single Flash Magnetic Mount Warning Lamp, 7 Joules
556-03-314	Amber, Double Flash Magnetic Mt. Warning Lamp, 15 Joules
556-03-324	Red, Double Flash Magnetic Mount Warning Lamp, 15 Joules

### REPLACEMENT PARTS

MODEL	FLASH TUBE	DOMES LENS	POWER MODULE
556-00, 02	27138	20151-1, 2, 3, 4, 7	95238-2
556-01, 03	27138	(Amber, Red, Clear, Blue, Green)	95241-2

**FEATURES:** "Hi" Daytime use; "Lo" Nighttime use. See switch #26510-2, 12V & 26510-3, 24V required for Hi-Lo hookup. Double flash models have Hi-Lo feature & operates at 12V or 24V. 2 amp. power consumption at 12.8 V.D.C., Rugged & dependable light with proven reliability. Single flash lamps meet SAE J1318 Class 2 & 3, Double flash lamps meet SAE J1318 Class 1.

**NOTE:** The use of any magnetic mounted warning lamp on the outside of a moving vehicle is not recommended and is at the sole discretion and risk of the user.

**MOST MODELS AVAILABLE IN QUAD FLASH.**

## 558-00



### ECONOMY INDUSTRIAL STROBE LAMP

**DIMENSIONS:** 3-5/8" H., 5" dia., three mtg. holes for #10 bolt on 5" dia. circle

**MATERIAL:** "Lexan" base & lens, rubber mounting gasket

**ORDER NO.:**

558-00-114	Amber
558-00-124	Red

### REPLACEMENT PARTS

FLASH TUBE	LENS
27153	20158-1 or 2 (Amber or Red)

**FEATURES:** 12-72 V.D.C., multi-voltage, 2 joule energy level, water-tight "O" ring, replaceable flash tube, modular power supply, low profile, permanent mount, screw on lens.

### LOW PROFILE, MEDIUM DUTY

**DIMENSIONS:** **559-00, 02:** 6" H. x 5-1/2" dia., **559-01, 03:** 4" H., mtg. surface, pipe or magnetic. Two mtg. holes 6-1/4" apart.

**MATERIAL:** "Lexan" lens, die cast alum. housing & rubber mtg. gasket

**AMPS & JOULES:** 1.8 Amps at 12V; 12 Joules

**ORDER NO.:**

559-00-314	Amber, Double Flash Strobe, 6" High
559-00-324	Red, Double Flash Strobe, 6" High
559-01-314	Amber, Double Flash Strobe, 4" High
559-01-324	Red, Double Flash Strobe, 4" High
559-02-314	Amber, Double Flash Strobe, Magnetic, 6" High
559-02-324	Red, Double Flash Strobe, Magnetic, 6" High
559-03-314	Amber, Double Flash Strobe, Magnetic, 4" High
559-03-324	Red, Double Flash Strobe, Magnetic, 4" High

**SPECIAL ORDER:** Clear, Blue and Green domes.

### REPLACEMENT PARTS

FLASH TUBE	DOMES FOR 559-00, 02	DOMES FOR 559-01, 03	POWER MODULE
27138	20111-1, 2, 3, 4, 7	20144-1, 2, 3, 4, 7	95257-4
	(Amber, Red, Clear, Blue, Green)	(Amber, Red, Clear, Blue, Green)	

**FEATURES:** Low profile strobe, rugged die cast base, ideal choice for school buses & utility vehicles, Easy mounting w/o need for disassembly, Operates at 12-24 V.D.C. All double flash lamps meet SAE J1318 Class 1/2/3

**MOST MODELS AVAILABLE IN QUAD FLASH.**

## 559 series



### TWIST-ON LENS - HIGH OUTPUT

**DIMENSIONS:** 6-11/16" high x 6-13/32" dia.  
**MATERIAL:** Polycarbonate lens and base  
**ORDER NO.:** 560-00-114 Amber, High Output Strobe, 2.0 Amps, 19.5 Joules  
**SPECIAL ORDER:** Red, Clear & Blue lens are available

#### REPLACEMENT PARTS

LENS	FLASH TUBE	O-RING
20164-2,3,4	27138	22187

**FEATURES:** LED Diagnostic indicator. Photocell for auto "night" mode. Field selectable flash pattern via internal jumper (Quad or Random). Operates: 12-48V DC, Flash Rate: 65QFPM.



560-00

### TWIST-ON LENS - HIGH & LOW PROFILE

**DIMENSIONS:** **560-01:** 6-11/16" H. x 6-13/32" dia. **560-02:** 4-3/4" H. x 6-13/32" dia.

**MATERIAL:** Polycarbonate lens and base, universal flange base  
**ORDER NO.:** 560-01-114 Amber, Twist-on lens, high profile, 10 Joules Quad Flash & 7 Joule Double Flash  
 560-02-114 Amber, Twist-on lens, low profile, 10 Joules Quad Flash & 7 Joule Double Flash

**SPECIAL ORDER:** Red, Blue & Clear lens are available

#### REPLACEMENT PARTS

MODEL	LENS	FLASH TUBE	O-RING
560-01	20164-1,2,3,4	27163	22187
560-02	20165-1,2,3,4		

**FEATURES:** Field selectable flash pattern via internal jumper. Standard Quad Flash or selectable Dbl. flash. Completely encapsulated circuit for increased weather & shock resistance. Automatic low voltage shutdown below 9.5V DC. Operates: 12-48V DC, 2.0 Amps at 12V DC Quad Flash. Flash rate: 80 DFPM/ 65 QFPM



560-02

### SNAP-ON LENS - LOW PROFILE

**DIMENSIONS:** 4-1/4" high x 4-1/4" dia.  
**MATERIAL:** Polycarbonate fresnal lens, plastic base  
**ORDER NO.:** 561-00-112 Snap-on Lens, low profile, 6 Joule Quad Flash  
**SPECIAL ORDER:** Red, Blue & Clear lens are available.

#### REPLACEMENT PARTS

LENS	FLASH TUBE	O-RING
20150-1,2,3,4	27147	22188

**FEATURES:** Quick-snap lens/base assembly. Easy-on and easy-off lens. Sealed o-ring for enhanced water resistance, 1/2" Pipe thread or knockouts for bolt mounting.



561-00

### SNAP-ON LENS - LOW PROFILE

**DIMENSIONS:** 4-1/4" high x 4-1/4" dia.  
**MATERIAL:** Polycarbonate fresnal lens, plastic base  
**ORDER NO.:** 561-01-112 Snap-on Lens, w/ magnetic mount & cigarette lighter adaptor.  
**SPECIAL ORDER:** Red, Blue and Clear lens are available.

#### REPLACEMENT PARTS

LENS	FLASH TUBE	O-RING
20150-0	27147-0	22188-0

**FEATURES:** Quick-snap lens/base assembly. Easy-on and easy-off lens. Sealed o-ring for enhanced water resistance. Cigarette lighter plug with magnetic mount.

**NOTE:** The use of any magnetic mounted warning lamp on the outside of a moving vehicle is not recommended and is at the sole discretion and risk of the user.



561-01

565



## INCANDESCENT TRAFFIC DIRECTOR

**DIMENSIONS:** 2-5/8" H. x 47-1/2" W. x 3-5/8" D.  
**MATERIAL:** Anodized aluminum housing, plastic lens.  
**ORDER NO.:** 565-00-312  
**FEATURES:** Incandescent Traffic Director w/ Control Unit & Wiring 15' cable to wire director to control unit. 12 Volts. Amp Draw: 2-7 Amps depending on pattern. Has four distinctive patterns available via control unit (left arrow, right arrow, center-out, and alternating warning pattern). Mounting hardware for typical applications is included.

568-00-622



## INCANDESCENT TRAFFIC DIRECTOR

**DIMENSIONS:** 4-3/4" H. X 1-1/2" Dia.  
**MATERIAL:** 60 lb. Magnet mount base, plastic lens and housing.  
**ORDER NO.:** 568-00-612  
 568-00-622  
 568-00-642  
**FEATURES:** Amber, Personal Safety Strobe  
 Red, Personal Safety Strobe  
 Blue, Personal Safety Strobe  
 Equipped with magnet for mounting to ferrous surfaces, a lanyard and safety pin for securing to outerwear. 1.5 Joules, 12V. Uses one (1) standard "D" cell battery. Weighs less than 1 lb. A must for outdoor enthusiasts, boaters, crossing guards and directing traffic.

569



## MULTI-HEAD REMOTE STROBE SYSTEM

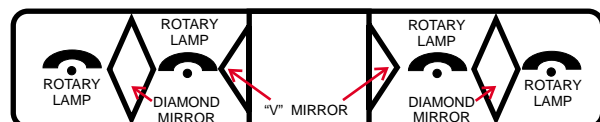
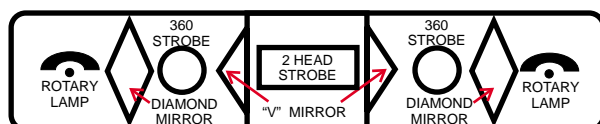
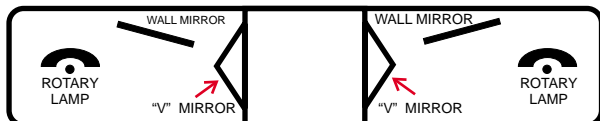
**DIMENSIONS:** 2-7/8" H. x 5-1/2" L. x 5-1/4" D. (Power Supply)  
**VOLTAGE:** 10V - 30V DC  
**AMP:** 9.4 Amps Max  
**OUTPUT:** 90 Watts  
**ORDER NO.:** 569-00-012  
 569-01-012  
**FEATURES:** Four Head Remote Strobe System  
 Six Head Remote Strobe System  
 Kit includes one 90 watt remote strobe power supply, 4 or 6 clear strobe tubes, two 15' cables, two 20' cable and lighted toggle switch. Allows up to 24 customer selectable flash patterns. Automatic power reduction protection from failed heads. Selectable day/night mode.

573



## STANDARD LIGHTBARS

**DIMENSIONS:** 5" H. x 11" W. x 48" L.  
**MATERIAL:** Aluminum base, plastic lens  
**ORDER NO.:** 573-00-3\_2  
 573-01-3\_2  
 573-02-3\_2  
**SPECIAL ORDER:** Red, Blue, Green & Clear lens are available  
**FEATURES:** All rotary lamps are halogen. All lightbars operate on 12V. Hardware provided for direct-to-vehicle mounting.



## ROOF MOUNTING BARS

**DIMENSIONS:** 52" bar for cars, 58" bar for trucks, 2 plates, 9-5/8" dia. with three mounting slots. To fit Arrow 550 & 551. Adjustable slots allow 10" range.

**MATERIAL:** Satin anodized aluminum, aluminum plates, chrome plated steel tubing, stainless steel bolts.

**ORDER NO.:**

539-00-300 Bars for Cars (52"), Gutterless Type Mounting

539-75-300 Bars for Trucks (58"), Gutterless Type Mounting

**SPECIAL ORDERS:** Custom designed bars available - up to 90" long.



539

## MAGNETS

**DIMENSIONS:** 90369-8: 3" dia. heavy duty with .265 dia. mtg. hole.

90412-8: 2" dia. with .180 dia. mtg. hole.

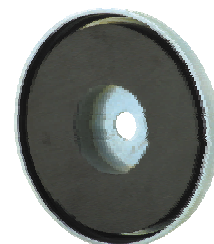
**MATERIAL:** Steel casing

**FINISH:** Zinc Plated

**ORDER NO.:**

90369-8 90 lb. Pull Magnet

90412 50 lb. Pull Magnet



90369

## LEVELING BRACKET

**DIMENSIONS:** 9-5/8" dia. plate with 3 mounting slots to fit Arrow 550.

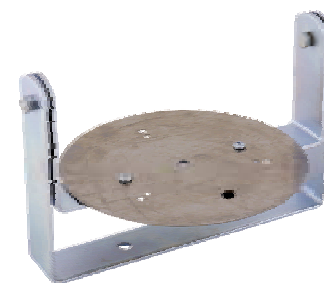
Bracket size is 12" x 8-1/4", 2 mounting holes 5" apart.

**MATERIAL:** Steel zinc plated, bronze bearings.

**FINISH:** Zinc plated

**ORDER NO.:**

99178 Leveling Bracket



99178

## PIPE MOUNT BRACKET

**DIMENSIONS:** 9" dia. plate, 3 mounting slots to fit Arrow 550 & 551.

3/4" pipe thread mounting.

**MATERIAL:** Aluminum plate, steel adapter.

**FINISH:** Zinc Plated

**ORDER NO.:**

99179 Pipe Mount Bracket



99179

## Pigtails, Pilot Lamps, Plug Connectors

### REPLACEMENT PIGTAIL ASSEMBLIES

Nylon and stainless steel assemblies. Long life, finest performance. The nylon disk exceeds SAE and ATA specifications. Stainless steel spring will never rust or become brittle, provides positive tension under all kinds of vibrations. Arrow's neoprene rubber gasket prevents moisture from entering socket. Pigtails are full length, heavy duty 16 gauge wire with tough thermoplastic insulation.

**ORDER NO.:**

00386-0BK Single Contact, for Min. Bayonet Socket

14681-000 Double Contact, Indexed

14682-000 Double Contact, Non-Indexed

14683-000 Single Contact



00386

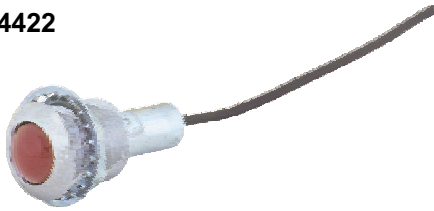
14681

14682

14683



04422



## PILOT LIGHT

**DIMENSIONS:** 7/8" o.d. flange. Clearance hole for 3/4" barrel required. 3/16" height from mounting surface, 1-5/8" behind mounting surface, 8" of wire supplied.

**MATERIAL:** Chrome plated brass housing, zinc plated steel socket.

**ORDER NO.:**

04422-2

Pilot Lamp, Red Lens, Dash Mounted, 2 C.P. #53 Bulb supplied along with Mounting Nut and Lockwasher.

07814



## 3 WAY FEMALE - PLUG CONNECTOR

**DIMENSIONS:** 1" H. x 0.9" W. x 1" D. housing, 24" lead wires, 8" ground wires with #6 ring terminal.

**MATERIAL:** Black polypropylene housing, tin plated brass terminals, 14 gauge PVC wire,

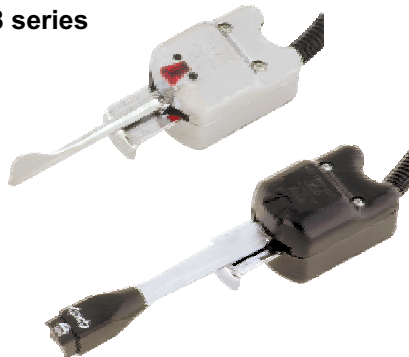
**ORDER NO.:**

07814-000

Receptacle for Two or Three Prong Flashers as well as some Sealed Beam Head Lamps

## Switches

288 series



## TURN SIGNAL SWITCH

**DIMENSIONS:** 2-1/4" wide x 7-1/2" long

**MATERIAL:** Die cast zinc housing, stainless mounting clamp

**FINISH:** Black or Chrome

**ORDER NO.:**

288-75-102

Black Finish, 7 Wire Type Switch-Permits Use of Combination Stop and Directional Lamps

288-75-302

Chrome Finish, 7 Wire Type Switch-Permits Use of Combination Stop and Directional Lamps

288-80-102

Black Finish, 7 Wire Hi-Lo Beam Switch With Relay

**Note:**

Sold less flasher and flasher socket. Available in 24V.

### REPLACEMENT PARTS

**12V BULB**

**FLASHER SOCKET**

**RELAY**

**FLASHER**

53 (Pilot Lamp)

07814-000

26049-2,-3

550-3 Terminal Type for 288-75

(for 288-80 only) 536-2 Terminal Type for 288-80

**FEATURES:**

3 Pilot lamps indicate switch operation. Complies with latest DOT regulations. Attractive chrome finish & matte black enamel, durable, well-made construction, instructions supplied, Built-in 4-way Hazard Warning Switch, universal mounting clamp.

## ON-OFF SWITCHES

**ORDER NO.:**

26001

Heavy Duty Push-Pull Switch, Box Type Two Terminals, Ivory Colored Plastic Knob, for 6 to 12V Use, 15 Amps. at 12 V.D.C.

26031

Toggle Switch, 2 Position On-Off Single Pole, 1/2" Dia. Hole Mounting, Supplied With 6" Leads, 6 Amps. at 12 V.D.C.

26035

Push Type Switch, Single Pole On-Off Plastic Push Button, Mounts through a 3/8" Dia. Single Hole, Supplied w/ 6" Leads (used in 036 & 046), 3 amps. at 12 V.D.C.

26046

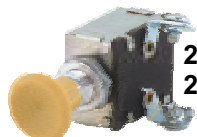
Similar to 26001 Except for Higher Amp. Rating, 30 Amps. at 12 V.D.C.

26050-2

Toggle Switch, SPST Illuminated With Transparent Lexan Handle. (Red On, Clear Off) 15/32" x 3/8" L. Mounting Stem w/ Keyway, 25 Amps. at 12 V.D.C. Terminals 6-32 Brass Screws.

26510-2

Hi-Lo Switch Assembly With Illuminated Pilot Lamp, Supplied w/ Mounting Bracket, Wire Assemblies and Fuse Holder, for 24V Change the -2 to -3, 15 Amps. at 12 V.D.C.



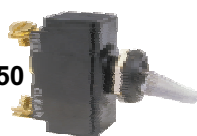
26001  
26046

26031



26035

26050



26510

## ELECTRONIC FLASHER

**DIMENSIONS:** 1-5/16" diameter, 1-7/8" high  
**MATERIAL:** Molded plastic case  
**ORDER NO.:**  
 848-02-002 Two Prong Flasher  
 848-03-002 Three Prong Flasher  
**FEATURES:** Meets SAE J945 vehicular hazard warning signal flasher, Flashes up to 11 #1156 or #1157 bulbs, 25 amps.



848

## HEAVY DUTY ALTERNATING FLASHER

**DIMENSIONS:** 2-5/8" W. x 2-3/8" H. x 1-1/2" deep. Two 3/32" mounting holes 2-11/16" apart on the vertical.  
**MATERIAL:** Plastic housing, 14 gauge copper wire, tinned disconnects  
**ORDER NO.:**  
 849-00-102 Solid State Alternating Flasher, 12V  
**FEATURES:** Handles 20 amps. per side, 90 flashes per minute, Integrated solid state circuit, No external sinks, Capable of delivering millions of flashes, .250" male disconnect for easy connections.

**NOTE:** Solid state flasher provides all functions required for vehicle operation. Handles heavier loads than ordinary flashing devices. 24V flashers available on special order.



849

## LED FLASHERS

**DIMENSIONS:** 1-5/8" H. X 1-3/16" W. x 1-3/16" D.  
**MATERIAL:** Molded plastic case  
**ORDER NO.:**  
 850-00-002 Two prong, 12V LED Flasher  
 850-01-002 Three prong, 12V LED Alternating Flasher  
**FEATURES:** Meets SAE J1690 vehicular hazard warning signal flasher. .10 to 15 amp self-adjusting to lamp amperage draw. External wire provides ground.



850-00

## RELAYS

**DIMENSIONS:** 1-1/16" x 1-1/16" x 19/32" H., .203" dia. hole in mtg. bracket section of housing.  
**MATERIAL:** Plastic case .250" brass bladed terminals  
**ORDER NO.:**  
 26049-2 Relay, SPDT - 12V, 40 Amps.  
 26049-3 Relay, SPDT - 24V, 20 Amps.  
**FEATURES:** Relays can be used as: change-over relays, normally open relays, normally-closed relays.(Used in #288-80)



26049

## FUSE - IN - LINE

**DIMENSIONS:** 12-1/2" L. (including wires), #8 terminals at both ends  
**MATERIAL:** Glass fuse, plastic housing, 16 gauge PVC wire & brass terminals.  
**ORDER NO.:**  
 14520-000 Insulated Spade Terminals for Rapid Connection, Easily Wired on to Protect Any Circuit, 20 Amp Fuse Included  
 14975-000 Insulated Spade Terminals for Rapid Connection, Easily Wired on to Protect Any Circuit, 15 Amp Fuse Included



14520

703

**CONVEX MIRRORS**

"L" mounting bracket included with 3/8" mounting hole. 5/16" - 24" adjustable ball stud and bolt. Ozone resistant vinyl glass gasket.

**ORDER NO.:**

703-00-100 8-1/2" Convex, Steel, Painted Black  
703-00-300 8-1/2" Convex, Bright Stainless Steel

**NOTE:** Popular school bus mirror.

707

**STICK ON SPOT MIRROR**

Eliminates blind spots. Corrosion resistant aluminum housing

**ORDER NUMBER:**

707-01-000 3" Round Shape  
707-02-000 3-3/4" Round Shape

719

**5-1/2" X 7-1/2" REPLACEMENT HEAD**

General purpose - economy mirror head 5/16" center ball stud mounting. Ozone resistant vinyl mirror gasket

**ORDER NO.:**

719-00-100 Mirror Head, Steel, Painted Black  
719-00-700 Mirror Head, Steel, Painted White

726

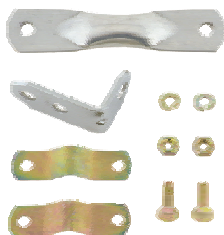
**7" X 16" ONE PIECE  
HEAVY DUTY WEST COAST HEAD**

Full 7" x 16". 5/16" 24 mounting studs. Heavy duty style. One piece back.

**ORDER NO.:**

726-00-100 Rib Back, Steel, Painted Black

733

**UNIVERSAL MOUNTING KIT FOR  
3/4" OR 5/8" TUBE**

Two part (clamshell) clamp, for attaching convex mirror to other mirror bracketry.

**ORDER NO.:**

733-00-300 Mounting Kit, Stainless Steel  
733-00-800 Mounting Kit, Zinc Plated Steel

735

**FENDER MOUNT BRACKET**

Adjustable position allows mirror to fold up to prevent breakage 13" long, - extends to 18". 5/16" diameter mirror mounting hole.

**ORDER NO.:**

735-00-300 Stainless Steel