



# IN THE DITCH MOTORCYCLE CADDY

The Cycle Caddy from In The Ditch gives you an easy way to load a motorcycle onto the deck of your carrier. The Cycle Caddy stores in a folded, compact position allowing it to easily fit into your tool box. Assembly is a snap with easy to follow instructions printed right on it. The Cycle Caddy is made from steel and comes with a Tuff Coat black finish. It is strong enough to support a motorcycle up to 950 lbs. and can also accomodate tires up to 9" wide. *Straps are not included.*



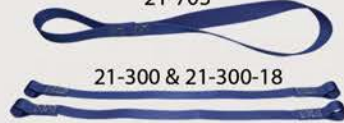
Do You Need Motorcycle Tie-Down Straps For Your Cycle Caddy? B/A Has what you need!



### Motorcycle Strap & Ratchet Set

PART #	LENGTH	UNIT	WLL
21-500	6'	EA	1,000 lbs.
21-501	16'	EA	1,000 lbs.

21-703



21-300 & 21-300-18

### Handlebar Soft Tie-Down Straps

Simply pass one end of the strap through the eye on the other end with the handlebar in the loop you just formed and snug up on the handle bar.

PART #	LENGTH	UNIT	WLL
21-300-18	18"	PR	1,000 lbs.
21-300	24"	PR	1,000 lbs.
21-703	17"	EA	1,000 lbs.

**IN STOCK & READY TO SHIP**



Zips.com | 800-222-6047