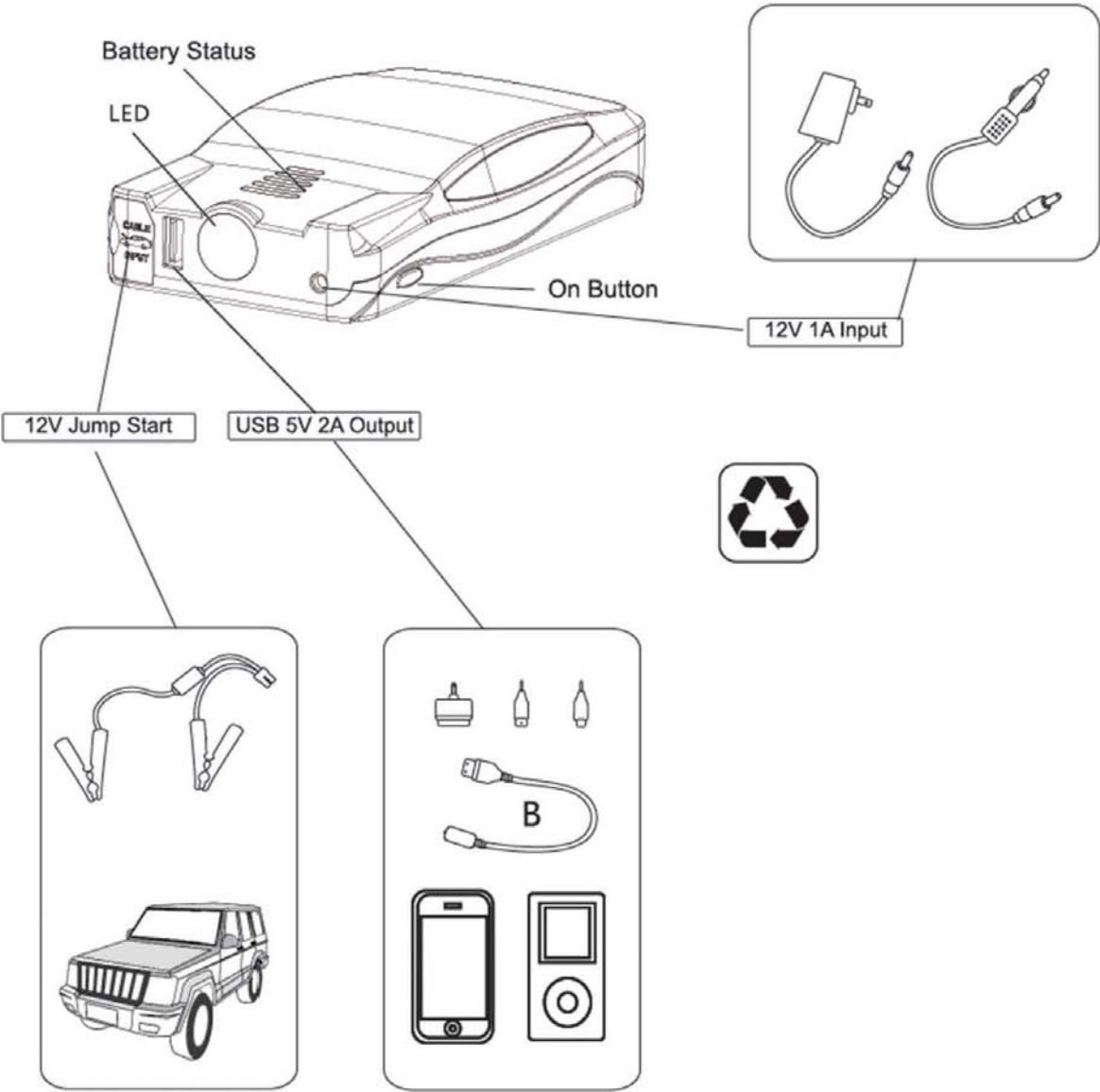


USER MANUAL

Thank you for choosing our product. Always follow proper safety precautions when using this product. **Read all instructions carefully before use.** Please do not disregard instruction manual, keep for easy reference.

A. PRODUCT LAYOUT :



B. OPERATION

Battery Status

Press the On Switch to check the charge status.

LED	Unlit	5 Flashing	1 solid	2 solid	3 solid	4 solid	5 solid
Storage level	0%	10%	20%	40%	60%	80%	100%

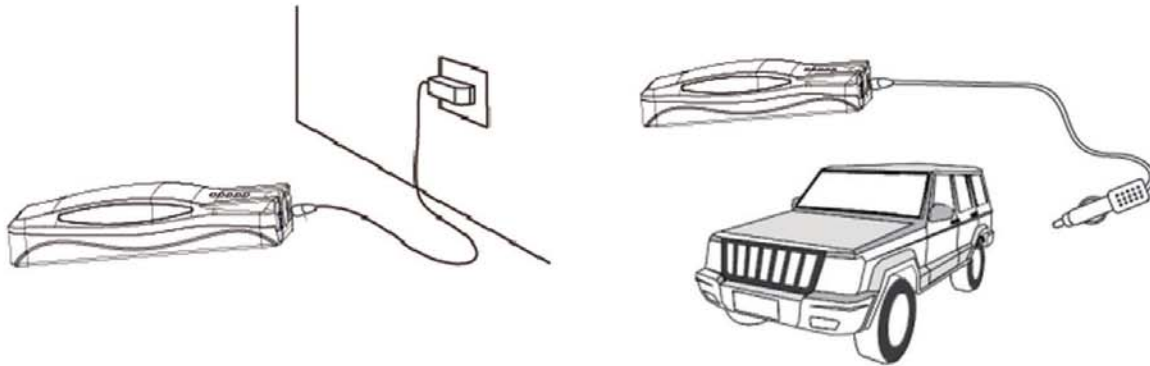
The battery status gauge is represented by five (5) lights on top of unit. While charging the lights will flash one by one as charge level increases. Solid lit lights indicate current level of charge while charging. All lights will go off when unit is completely charged or charging is paused.

Charging Instructions: (Wall Charger)

- 1) Plug A/C or wall power supply into charge port on unit marked 12V-1A.
- 2) Plug power supply to standard 110V wall outlet.

Charging Instructions: (DC Outlet)

- 1) Plug DC adapter into 12V DC socket.
- 2) Connect adapter to 12V 1A input port.



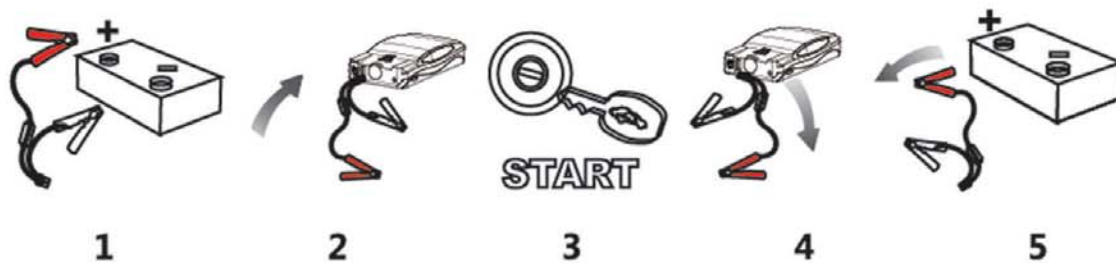
12V vehicle jump start instructions:

Note: Not recommended for use with diesel motors, V8 or larger.

Ideally unit should be fully charged but no less than 60%, or three (3) solid lights for optimum performance. Never crank motor for more than 5 seconds. This can be bad for the vehicle and jump starter.

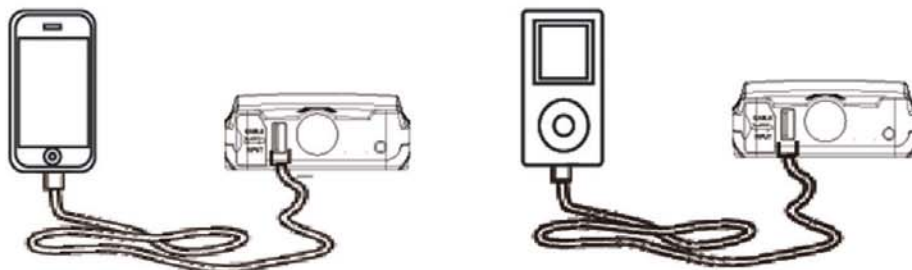
Between jump start attempts, allow a 25 second cool-down period.

- 1) Connect red clamp to the positive (+) positive battery terminal and the black clamp to the negative (-) battery terminal.
- 2) Securely plug clamp wire connector into jump start port of unit. Be sure connector is secured.
- 3) Start vehicle. Note: If vehicle does not start remove clamps from battery and clamps from unit. Battery may be faulty or to low state of discharge.
- 4) Immediately remove clamps from battery once vehicle is started and remove clamps and wire from unit.
- 5) Leave vehicle running.



Charging Mobile Devices:

- 1) Plug pigtail cable provided with product or standard USB charger into 5V-2A output port.
- 2) Connect to device.
- 3) Press "ON" switch..



LED Flashlight (Normal, Strobe, SOS)

Press and hold "ON" switch for three seconds to activate light. To switch between light functions press and release switch while light is on.

C. PARTS LIST

- (1) Unit
- (1) USB pigtail connector
- (1) Wall Charger
- (1) DC Power Cord
- (1) Jumper Cable
- (1) User Manual

D) TECHNICAL SPECIFICATIONS

Size: 6" x 3"x 1.25"

Weight: 1 lbs

Battery Capacity: 44 Wh

Output: 5V/2A, 12V Jumpstart

Input: 12V/1A

Charge Time: 3 hours

Cranking Amps: 300A

Peak Amp: 400A

Operating Temperature: -4°F - 140°F

E) TOXIC AND HARMFUL SUBSTANCES

Composition and amount of toxic and harmful substance					
Pb	Hg	Cd	Cr(Vi)	PBB	PBDE
O	O	O	O	O	O

O : Indicate all homogeneous materials' hazardous substances content are below the MCV limit specified in the Standard 2002/95/EC(RoHs).

F. FAQ

Q. How do I turn off the unit?

A. The unit has auto shutoff when not in use or charging.

Q. How many times can a fully charged unit charge a cell phone?

A. The unit will charge a typical cell phone approx. 7 times.

Q. How long will it take to charge my cell phone?

A. With phone powered off it will take approx. 1 to 1.5 hour(s)

Q. How many times will the fully charged unit jumpstart a vehicle?

A. This depends on the vehicle and state of its battery, but a standard 4 cyl. Sedan with a battery that is at 30% approx. 20 times

Q. How often do I need to charge the unit?

A. When not used the battery will remain charged for 6 to 12 mo.
Recommended charging is every 6 mo.

G. TROUBLESHOOTING

Problem: Full charge is not achieved on device even though indicator lights are full .

Cause: Unit may auto-stop at 60% charge if device battery is very low to protect from discharge.

Solution: Unplug charge adapter and plug in again.

Problem: No response when pressing switch.

Cause: Unit has low voltage protection to prevent complete drain.

Solution: Plug in unit and charge to awaken.

H. WARNING

1) Always make sure blue plug adapter is secured tightly and securely when using jumpstart feature.

2) Always check that jumper clamps are securely connected to battery terminals and terminals are free from dirt and corrosion before use.

3) Never connect or touch clamps to each other when connected to the unit.

4) Never disassemble unit. Contact manufacturer.

I. CAUTION READ BEFORE USE

Always use proper care when using this product.

When using this product someone should be within range of your voice or close enough to come to your aid when working with batteries.

Protective eyewear should be worn when using this product
Remove personal metal items like rings, bracelets, necklaces, etc. when using jumpstart feature.

Do not drop unit. If unit receives a sharp blow or is otherwise damaged in any way have it checked by a qualified battery technician.

This product is not intended for use by children without proper supervision.

Do not allow prolonged exposure to wet conditions.

Do not submerge product in water.

Do not operate product near areas at risk of explosion, such as presence of gases and vapors without ventilation.

Do Not modify or disassemble. Contact manufacturer for repair.

Do not expose product to extreme heat or fire.

Do not store in locations where temperature may exceed 150°F.

Charge in location with temperature between 0°F - 120°F.

Charge only using charger provided with product.

If product is leaking liquid dispose of at proper recycle facility immediately.

Under extreme conditions, battery leakage can occur. If a liquid is noticed coming from product do not handle with bare hands. In case of skin contact wash with soap and water immediately. If liquid comes in contact with eyes rinse eyes with cold running water for at least 10 minutes and get medical attention immediately.

Use jump starter feature for 12V lead acid batteries only.

Product contains lithium based battery, at end of product life dispose of product according to local regulation.

J. LIMITED WARRANTY INFO

LIMITED WARRANTY

NOTE — Save proof of purchase, such as a dated store receipt, to establish warranty period. Without a dated receipt, we will use the manufacturing date code. This warranty for the AllStart Jumper Packs is extended to the original purchaser or user, and it covers defects in materials and workmanship for one year.

• For malfunction due to defects in materials or workmanship prior to 6 months from the purchase date, we will repair or replace the unit at our discretion after inspection.

NOTE — The Battery is covered under separate terms. The Battery will be prorated monthly, over one year, from the end of the first month to the end of the twelfth month. This applies only to batteries which have NOT been misused or abused. Typical failure modes of misused or abused battery are melted terminals or signs of overcharging. This warranty is invalidated if any of the following occurs, but not limited to this list:

- Failure to follow instructions in the User's Manual
- Accidental and / or unreasonable use or misuse
- Mishandling
- Over Charging or Overloading
- Extended storage without recharging
- Repairs by an un-authorized person or modification
- Normal wear or accident.

This warranty is in lieu of all other express warranties. AllStart LLC. will not be liable for consequential or incidental damages. Some states do not allow limitations on warranties. In such case the above limitation may not apply.

SERVICE ADDRESS

AllStart LLC.
4300 Waterleaf Court
Greensboro, NC 27410

NOTE - Whenever returning a product to this address, it must be packaged securely to avoid shipping damage. AllStart LLC. will not be responsible for any shipping or handling damage. Also, all postage or transportation must be prepaid.

CUSTOMER SERVICE CONTACT

AllStart LLC.
Service Dept.
TEL: 800-537-1077
FAX: 800-537-1717
Email: info@cal-vantools.com
Web: cal-vantools.com



Overcharge and
Overdischarge Protection



Fuse Protection



Anti-Reverse Plug

Applied Standard : GB/T 18287-2000

