

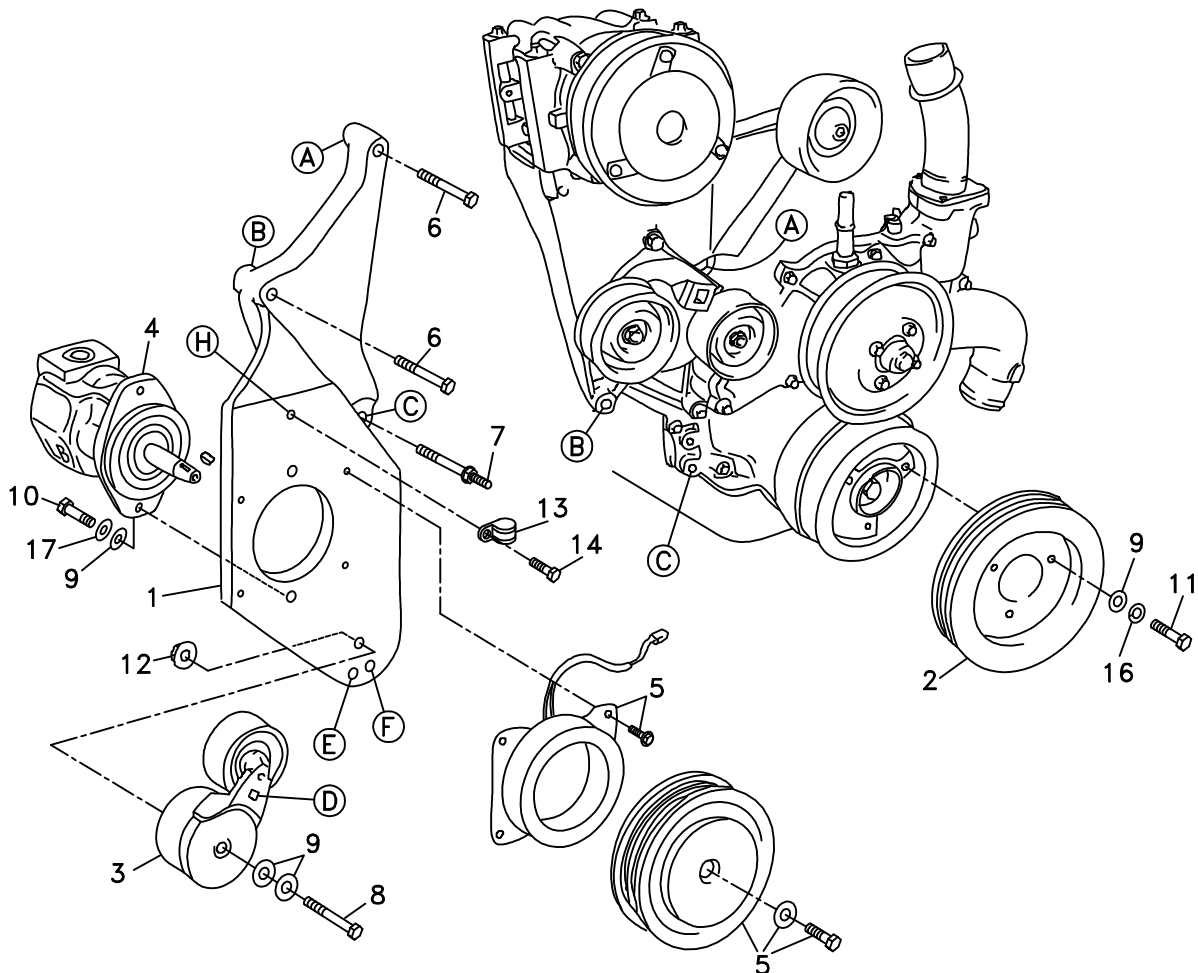
None	Bracket Assy. (See item 1)		Kit No.	700330	
711157	Bracket Bolt Pkg. (Inc. items 6, 7)		Make	Ford	
711158	Pulley Bolt Pkg. (Inc. item 9, 11, 16)		Engine	7.3L	
711159	Tensioner Bolt Pkg. (Inc. items 8, 9, 12)		Fuel	Diesel	
None	Fan Spacer Bolt Pkg.		Year	1999	
			Equipment	w/ A/C	
			Revised	F	11-4-99

ITEM	PART #	DESCRIPTION			
1.	711155	Pump plate	11.	110180	M10 x 60 x 1.5 Bolt
2.	740260	Crankshaft pulley	12.	110645	3/8NC Wiz flange nut
3.	740255	Tensioner	13.	130011	Adel clamp
4.	a	Pump (Side port)	14.	110515	1/4NC x 1/2 Bolt
5.	740148	Clutch	15.	740254	Belt/Micro-V K080435
6.	110580	M10 x 85 x 1.5 Bolt	16.	110689	M10 Lock washer
7.	110232	M12 x 78 - M10 x 24 Stud	17.	110672	3/8 Lock washer
8.	110495	3/8NC x 3 3/4 Bolt	b 18.	720221	Hose/60" Trans. cooler
9.	110676	3/8 Flat washer	b 19.	720222	Hose/48" Trans. cooler
10.	110425	3/8NC x 1 1/4 Bolt			

a See Master List for pump part number

b Optional hoses used with manual transmission only

FIG. 1



(A)(B)(C)... Denotes bolt holes in engine to locate corresponding holes in Pump Brkt.

FIG. 2

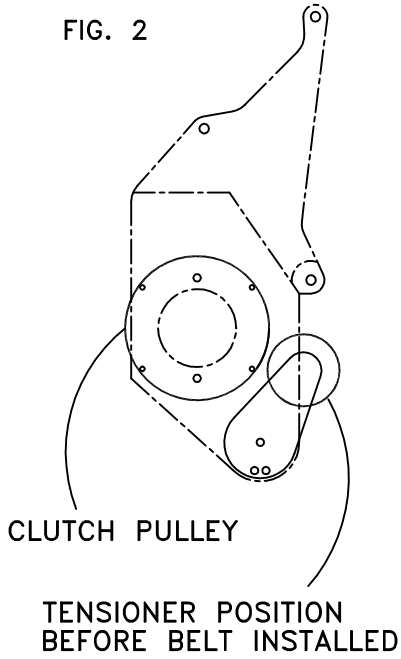


FIG. 3 BELT DIAGRAM

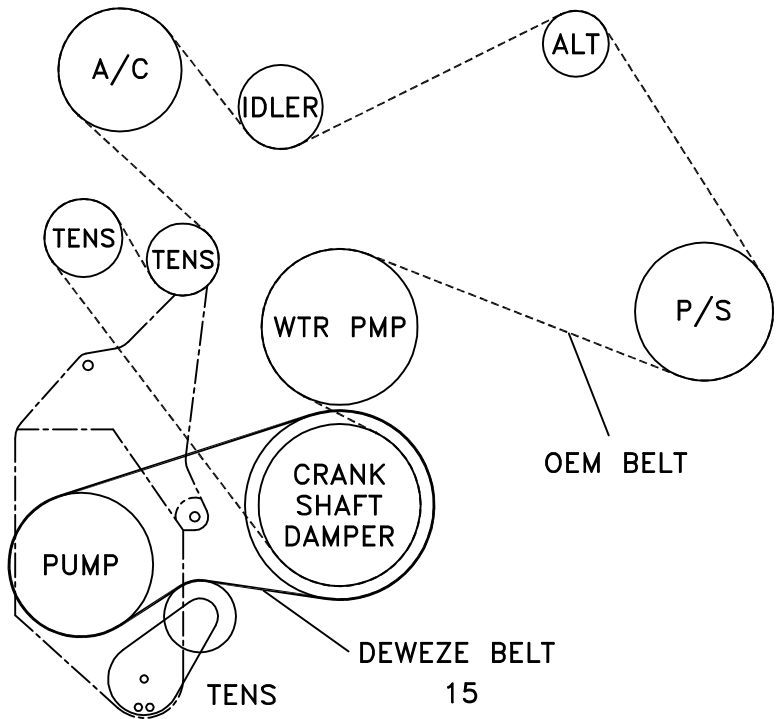


FIG. 4

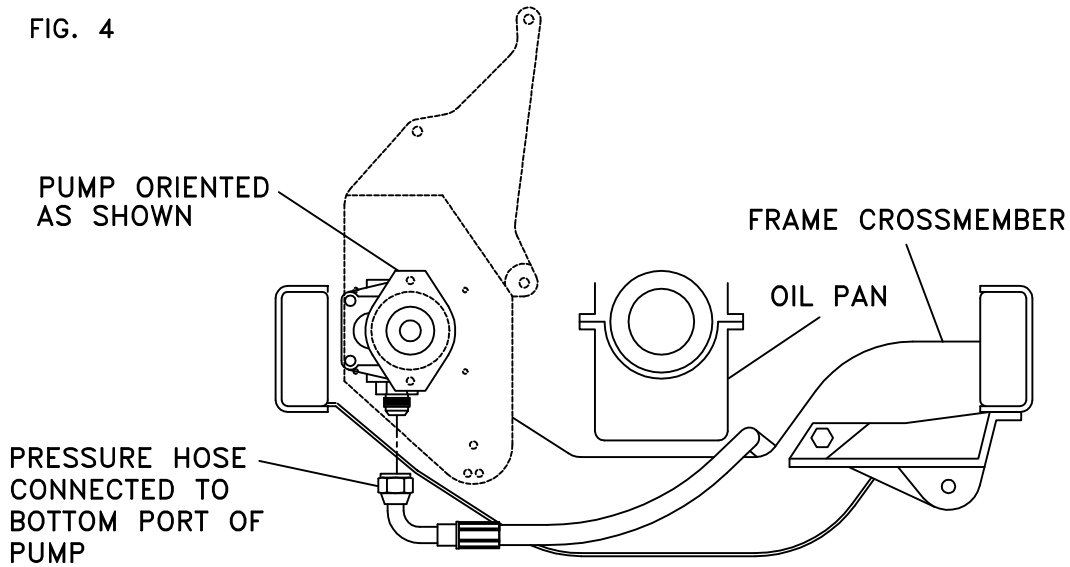
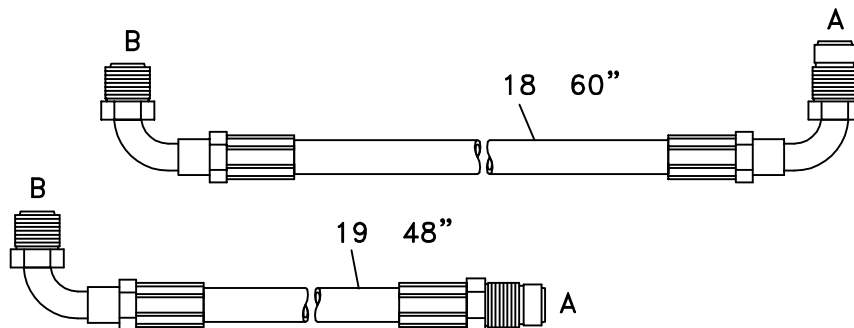


FIG. 5

OPTIONAL MANUAL TRANSMISSION COOLER LINES



DewEze

Clutch Pump Kit
#700330
Ford 7.3L
With A/C
1999

INSTALLATION INSTRUCTIONS

NOTE: Suction hose to pump must be a wire braid hose: minimum 1" I.D. for 7 & 9 gpm pumps, 1¼" I.D. for 12 & 17 gpm pumps. Installations with smaller suction hoses will void the pump warranty.

1. Disconnect the battery.
2. Drain the radiator. Remove top radiator hose from radiator.
3. Remove jack tools from top of radiator area.
4. Remove coolant reservoir hose from radiator and drain reservoir. Remove reservoir. Cut 1¼" from bottom end of the hose.
5. Loosen fan while belt is still in place. Remove belt.
6. Remove shroud and fan from engine compartment.
7. Remove OEM tensioner from A/C bracket. Remove OEM bolts from A/C bracket at locations A and B. They will not be used for the DewEze bracket. Remove nut and ground cable from stud bolt at location C. Keep the nut. Remove the stud bolt. It will not be reused.
8. If your truck is equipped with a manual transmission, the OEM steel cooling lines will be in the way of the pump bracket and can be replaced by optional hoses, which are available separately. The 60" hose (item 18, order part # 720221) goes into the same ports as the long steel line. The 48" hose (item 19, order part # 720222) goes into the same ports as the short steel line. Do not cross the lines into different ports. End A of the 48" hose goes into the passenger side of the radiator. End A of the 60" hose goes into the driver side of the radiator. End B of both hoses goes into their respective ports in the transmission. See Fig. 5.
9. Bolt crankshaft pulley (2) on using three M10 x 50 bolts (11).
NOTE: Torque to 40 +/- 6 lb-ft (55 +/- 8.3 Nm).
10. Bolt pump (4) onto bracket (1) using two 3/8 x 1 ¼ bolts (10) and two 3/8 lock washers (17) and two 3/8 flat washers (9). Position pump as shown in Fig. 1. The suction port points up.
11. Bolt clutch coil (5) onto bracket using flange bolts supplied with clutch. Bolt clutch pulley (5) onto pump shaft using bolt and washer provided with clutch. Bolt Adel clamp (13) into hole H just above the clutch. Insert the clutch wire through the clamp to keep it out of the clutch pulley and belt.
12. Install the fittings on the pump, pointing them to the rear.
13. Lower the bracket and pump assembly into the mounting area. Install the hoses onto the fittings before the bracket is bolted in place, as it is a tight fit and would be difficult to get to the fittings later.

NOTE: If truck has automatic transmission, the steel cooling lines will not be replaced. It will be necessary to adjust cooling lines to clear bracket and belt line after it is installed. Gently pull on the line until there is adequate clearance.

14. Bolt bracket onto engine using the M10 x 80 bolt (6) in locations A and B, and the M12 x 78 - M10 x 24 stud (7) in location C. Attach the ground cable to the stud bolt on top of the bracket and fasten with the OEM nut.
NOTE: Torque bolts at locations A and B to 40 +/- 6 lb-ft (55 +/- 8.3 Nm). Torque stud at location C to 60 +/- 9 lb-ft (82.5 +/- 12.5 Nm).
15. Push end of pressure hose with straight fitting between frame crossmember and oil pan on driver's side as shown in Fig. 4. Run it under the motor mount and outside the oil filter. Connect the 90° hose end to the bottom pump fitting. Tie the hose to the frame.
16. The belt tensioner (3) included with your kit is from one of two possible suppliers. The locating pin on the back of each tensioner is located in a different position. To identify which hole the locating pin goes in:
If the tensioner has a 1/2" square hole for a ratchet at location D place the locating pin on the back of the tensioner in the left hole at location E. If the hole at location D is a 3/8" square hole place the locating pin on the back in the right hole at location F.
Bolt the belt tensioner (3) onto bracket using 3/8 x 4 bolt (8), 3/8 flat washer (9), and 3/8 wiz flange nut (12) on backside of bracket. The idler pulley should be relatively close to the clutch pulley before the belt is installed as shown in Figure 2.
17. Bolt OEM dual tensioner back onto A/C bracket using OEM bolt.
NOTE: Torque bolt to 40 +/- 6 lb-ft (55 +/- 8.3 Nm).
18. Install OEM belt.
19. Install pump drive belt (15). Lay straight edge on front of crankshaft pulley to make sure belt runs parallel to straight edge from crankshaft to clutch pulley.
20. Install fan and shroud.
21. Connect top hose to radiator. Connect coolant reservoir hose to radiator and install reservoir. Replace coolant in radiator and reservoir.
22. Replace jack tools.
23. Connect battery.
24. Run engine and check for any clearance or alignment problems. Adjust as needed.