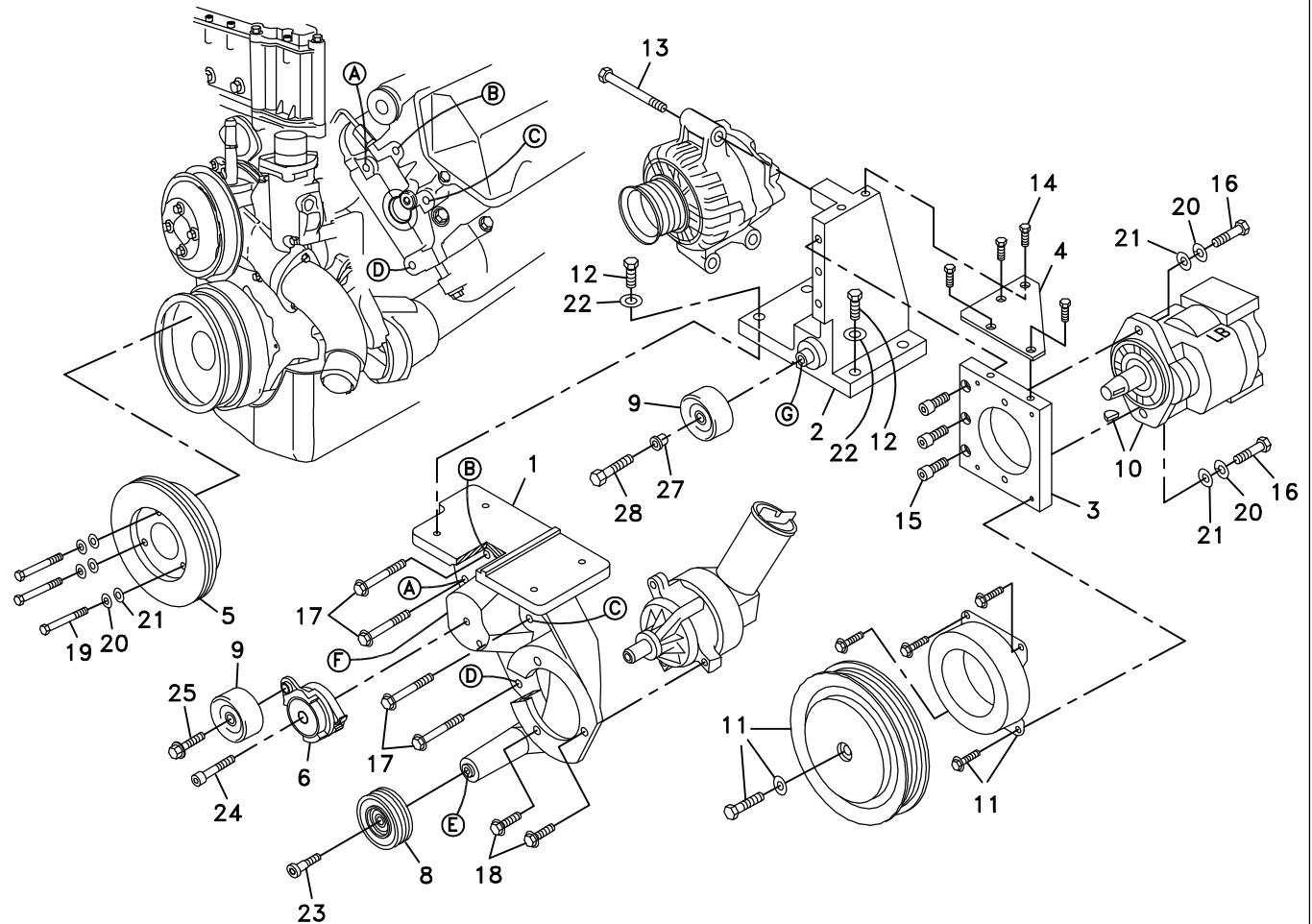


711276	Bracket Assy. (Inc. item 1-4)		Kit No.	<b>700362</b>	
711277	Bracket Bolt Pkg. (Inc. items 12, 14, 15)		Make	Ford	
711158	Pulley Bolt Pkg. (Inc. items 19-21)		Engine	7.3L	
711278	Idler Bolt Pkg. (Inc. items 23, 24, 27, 28)		Fuel	Diesel	
740318	Tensioner Assy. (Inc. items 6, 9, 25)		Year	1999-	
None	Fan Spacer Bolt Pkg.		Equipment	Dual Alt., A/C	
			Revised	B	6-2-00

ITEM	PART #	DESCRIPTION	ITEM	PART #	DESCRIPTION
1.	711235	Alt/power steer. bracket	16.	110425	3/8-16 x 1 1/4 Bolt
2.	711273	Alternator bracket	17.	OEM	Bracket mount bolt
3.	711274	Pump plate	18.	OEM	Power steering bolt
4.	711275	Gusset	19.	110180	M10 x 60 Bolt
5.	740260	Crankshaft pulley	20.	110689	3/8 Lock washer
6.	740289	Tensioner	21.	110155	3/8 Flat washer
7.	-----	-----	22.	110666	1/2 Lock washer
8.	740143	Idler pulley/serpentine	23.	110213	M10 Torx head bolt
9.	740302	Idler pulley/flat 1.47" wide	24.	110250	3/8-16 x 2 1/2 Socket hd bolt
10.	*	Pump	25.	110249	7/16-14 x 1 3/8 LH Bolt
11.	740148	Clutch	26.	700227	Radiator hose
12.	110429	1/2-13 x 1 1/2 Bolt	27.	711072	Bushing
13.	OEM	Alternator bolt	28.	110400	3/8-16 x 2 Bolt
14.	110433	3/8-16 x 3/4 Bolt	29.	740305	Belt/Micro-V K080751
15.	110395	3/8-16 x 1 Socket hd bolt			

\* See master list for pump part no.



(A)(B)(C)... Denotes bolt holes in engine to locate corresponding holes in Pump Brkt.

FIG. 2

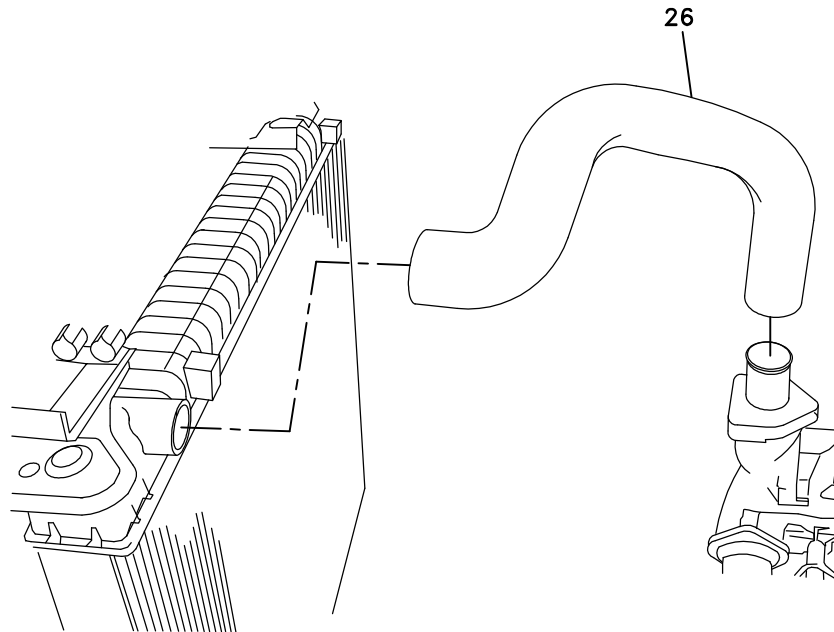
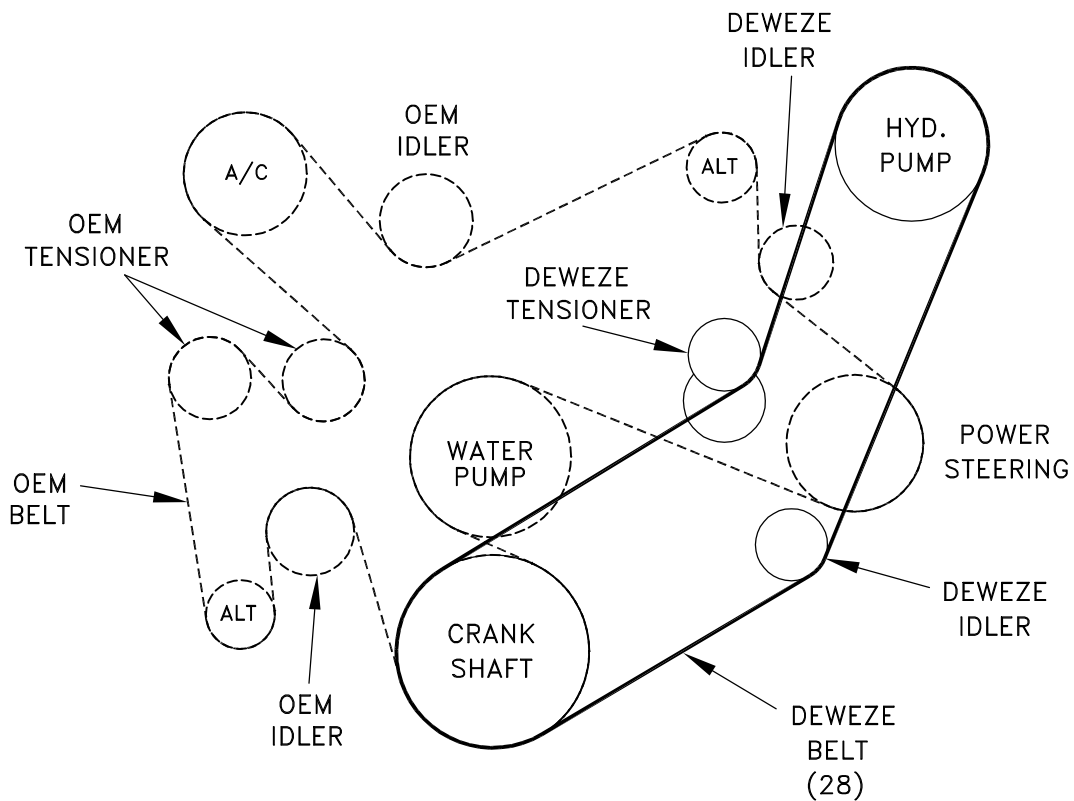


FIG. 3

BELT DIAGRAM



# DewEze

Clutch Pump Kit  
#700362  
Ford 7.3L  
Dual Alternator  
'A' mount  
1999-

## INSTALLATION INSTRUCTIONS

1. Disconnect battery.
2. Remove OEM serpentine belt.
3. Drain the coolant from the radiator. Remove the upper radiator hose.
4. Remove the fan shroud and the fan.
5. Remove alternator from top OEM location by removing three bolts. Keep these bolts.
6. Make a note of how far the power steering pulley is on the shaft so it can be reinstalled in the same position. Remove the power steering pulley using a pulley removal tool. Remove the power steering pump and its mounting bracket. Keep these bolts.
7. Mount the crank pulley (5) to the damper using three M10 x 60 bolts (19), three 3/8 lock washers (20), and three 3/8 flat washers (21).
8. Mount the DewEze power steering bracket (1) at locations A, B, C, and D using the OEM bolts. Mount the power steering pump to the bracket using the OEM bolts. Start the pulley onto the shaft. Using a pulley installer tool press the pulley on until it is back to the original position you noted in step 6.
9. Attach the DewEze alternator bracket (2) to the top of the power steering bracket using 1/2 x 1 1/2 bolts (12). Re-install the alternator to this bracket using the OEM bolts (13).
10. Attach the pump (10) to the back of the pump plate (3) using two 3/8 x 1 1/4 bolts (16), and two 3/8 lock washers (20), and two 3/8 flat washers (21). Attach pump plate with pump to the front of the alternator bracket (2) using three 3/8 x 1 socket head bolts (15).
11. Attach the gusset (4) to the top of the alternator bracket and pump plate using four 3/8 x 3/4 bolts (14). Tighten all bolts.
12. Mount the clutch coil (11) onto the front of the pump plate using the four wiz flange bolts provided with the clutch. Slide the pulley onto the shaft. Thread the bolt with washer into the end of the shaft. Make sure the pump pulley lines up with the crank pulley by using a straightedge across both pulleys.
13. Press an idler bushing (27) into the center of the serpentine groove idler (8). Mount the idler onto the power steering bracket at location E using an M10 x 40 bolt (23). Press the other idler bushing (27) into the center of one flat steel idler (9). Mount the idler onto the alternator bracket at location G using a 3/8 x 1 1/4 bolt (16).
14. Mount the other flat steel idler (9) to the tensioner using the 7/16 x 1 3/8 LH bolt (25). Mount the tensioner (6) onto the power steering bracket at location F using a 3/8 x 2 1/2 socket head bolt (24).

15. Re-install the engine accessory drive belt as indicated by the dashed line in the belt diagram. Install the pump drive belt (26) as indicated by the solid line in the belt diagram.
16. Install the fan and fan shroud.
17. Slide the long leg of the DewEze radiator hose (26) onto the thermostat housing. Slide the short leg onto the radiator. Secure with OEM hose clamps. Replace the coolant back in the radiator.
18. Connect the battery.
19. Run the engine and check for any clearance or alignment problems. Adjust as needed.