
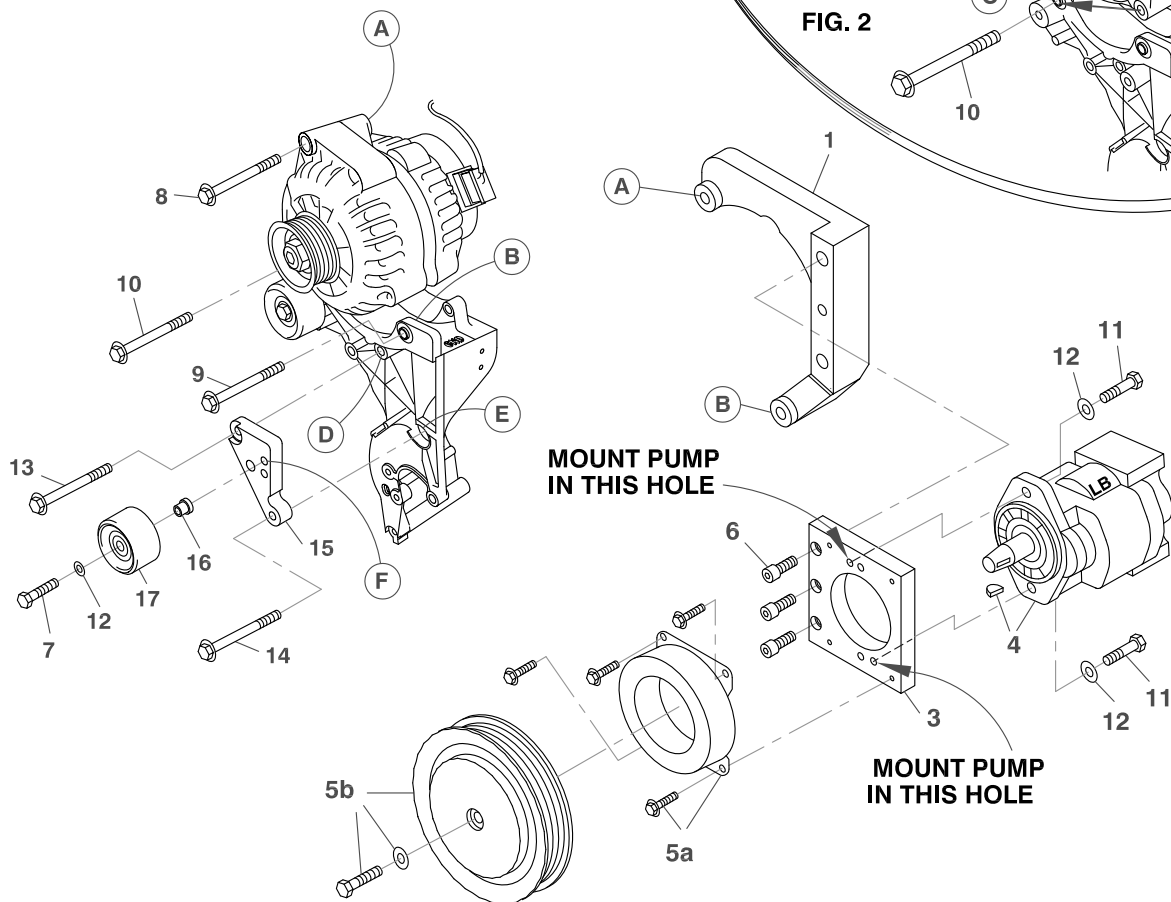


711384	Bracket Assy. (Inc. items 1, 2, 3, 15)		Kit No.	<b>700386</b>
711356	Bracket Bolt Pkg. (Inc. items 6, 8)		Make	Chevrolet/GMC
None	Pulley Bolt Pkg.		Engine	6.0L
711368	Idler Pulley Bolt Pkg. (Inc. items 7, 12, 16)		Fuel	Gas
711370	Idler Brkt. Bolt Pkg. (Inc. items 13, 14)		Year	2001
None	Fan Spacer Bolt Pkg.		Equipment	
			Revised	H 4-30-14

ITEM	PART #	DESCRIPTION	ITEM	PART #	DESCRIPTION
1.	711399	Engine bracket	10.	OEM	Bolt
2.	-----	-----	11.	110425	3/8-16 x 1 1/4 Bolt
3.	710936	Pump plate	12.	110676	3/8 Flat washer
4.	*	Pump, rear port	13.	110215	M10 x 120 x 1.5 Bolt
5.	742016	Clutch	14.	110181	M10 x 130 x 1.5 Bolt
6.	110465	3/8-16 x 1 1/4 Socket head bolt	15.	711365	Idler bracket
7.	110526	M10 x 40 x 1.5 Bolt	16.	711366	Idler bushing
8.	110217	M10 x 70 x 1.5 Bolt	17.	740294	Idler
9.	OEM	Bolt	18.	740336	Belt/Dayco 5061223
			19.	**	Insulation, pressure hose
			20.	**	Insulation, suction hose

\* See master list for pump part no.

FIG. 1



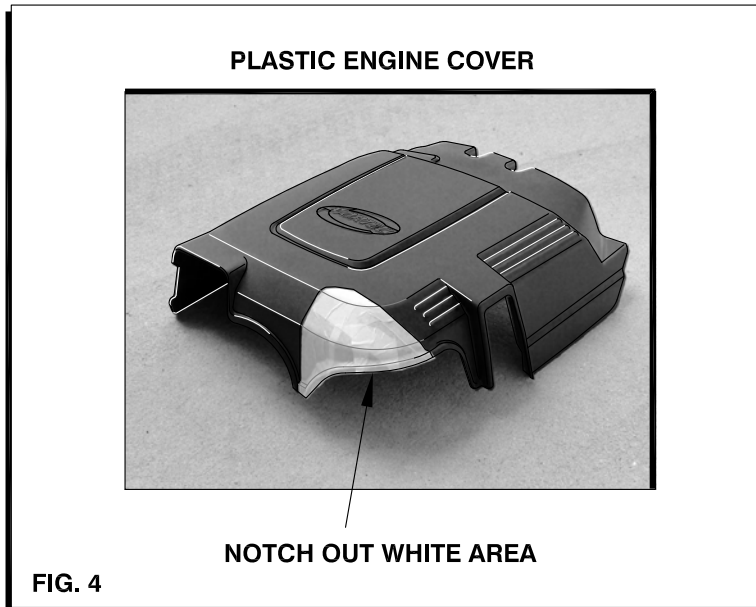
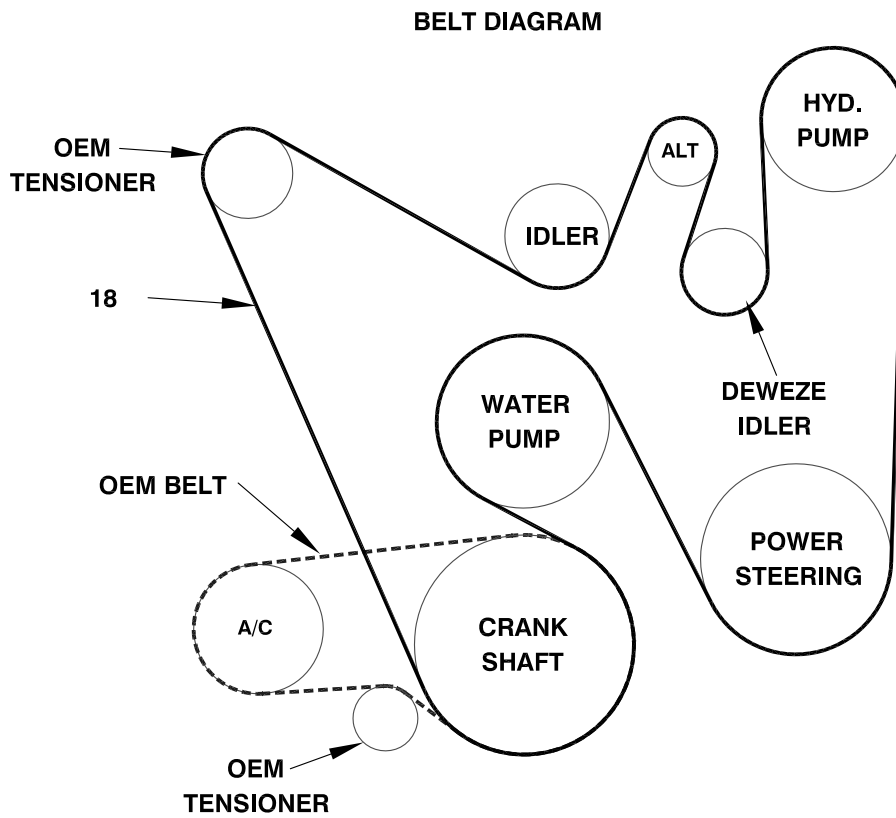
ROTATE ALTERNATOR  
CLOCKWISE SO LUG  
ON DRIVER'S SIDE  
NOW MOUNTS ON  
PASSENGER SIDE OF  
MOUNTING BRACKET

FIG. 2

OEM  
CONFIG.

(A),(B),(C)... Denotes bolt holes in engine to locate corresponding holes in Pump Brkt.

**FIG. 3**



# DewEze

## Clutch Pump Kit

**700386**  
Chevy 6.0L  
With A/C  
'A' mount  
2001 +

### INSTALLATION INSTRUCTIONS

1. The installation of this kit requires trained decision-making concerning clearances, tying components together, rerouting, or relocating OEM components, etc. It is impossible to describe all of the clearance and vibration points, etc. in the installation instructions. Therefore, the technician must exercise professional judgment to achieve the best quality installation.
2. Disconnect the battery.
3. Remove plastic cover on top of engine. Notch out the corner as shown in Fig. 4.
4. Unbolt the alternator. Rotate it clockwise so the alternator lug that was on the driver's side of the mounting bracket is now on the passenger side of the mounting bracket. See Fig. 2. Thread the OEM bolt (10) that was originally in that hole back into the same location to mount the alternator. Do not tighten it yet.
5. Some engines have a coil pack bracket that interferes with the positive alternator post. Remove a portion of this bracket if there is contact at this location, while maintaining structural integrity of bracket. See photograph to right.
6. Attach the pump plate (3) to the engine bracket (1) with three 3/8 x 1 1/4 socket head bolts (6).
7. Bolt pump (4) onto pump plate (3) with two 3/8 x 1 1/4 bolts (11) and two 3/8 flat washers (12). Torque to 20 ft-lb. Attach coil (5a) with four 1/4 x 1/2 flange bolts supplied with clutch. Torque these to 6 ft-lb. Attach clutch pulley (5b) to pump shaft with 5/16NF x 1 1/4 bolt and heavy washer supplied with clutch. Torque to 14 ft-lb.
8. Insert the lower bracket between the lugs on the alternator bracket at location B with the OEM bolt (9) taken from this location. Insert the M10 x 70 bolt (8) into the top hole in the alternator and thread into the DewEze bracket at location A. Tighten these bolts and the OEM bolt at location C.
9. Remove OEM bolts at locations D and E and discard. Insert the idler bushing (16) into the back of the idler pulley (17). Insert the M10 x 40 bolt (7) through the 3/8 flat washer (12), through the front of the idler pulley with bushing and into the top threaded hole at location F in the idler bracket (15). Attach the idler bracket to the alternator bracket with the M10 x 120 bolt (13) at location D and the M10 x 130 bolt (14) at location E.
10. Slip the small hose insulation sheath (19) over the pressure hose. Slip the large hose insulation sheath (20) over the suction hose. Place the sheaths where the hoses run close to the exhaust to protect the hoses from the heat. Fasten the sheaths to the hoses with the nylon cable ties. Route the hoses back to the firewall and down running along side the frame.
11. Install the belt (18). Replace the top plastic engine cover.
12. For cab-over (Isuzu) applications only: The foam underneath the cab will need to be trimmed away, and the cab floor itself will need to be formed (dented in) slightly to clear the pump clutch.
13. Connect the battery.
14. Run the engine and check for any clearance or alignment problems. Adjust as needed.

