

**Bolt Packages:**

Bracket	711458	(Inc. items 5, 6)
Pulley	None	
Idler, pump brkt.	711459	(Inc. items 8, 10)
Idler, a/c brkt.	711460	(Inc. items 2, 8, 10)
Tensioner	None	

Make	Chevrolet 4500, 5500	
Engine	8.1L	
Fuel	Gas	
Year	2003-	
Equipment	A/C	
Revised	C	4-16-09

Item	Part No.	Description
1.	711910	Pump bracket
2.	711009	Idler bushing, 1.12"
3.	711462	Spacer, .75" thick
4.	740242	Idler pulley 2.50" Dia. x 1.375" wide
5.	110183	M10 x 100 x 1.5 Bolt
6.	110274	M10 x 140 x 1.5 Bolt
7.	-----	-----
8.	110488	M10 x 45 x 1.5 Bolt
9.	110425	3/8-16 x 1 1/4 Bolt
10.	110676	3/8 Flat washer
11.	*	Pump, rear port
12.	740144	Clutch
13.	OEM	A/C compressor
14.	740261	Idler pulley 3" Dia. x 1.50" wide
15.	740357	Belt, Micro-V 6K126.68



**FIG. 1**  
**BELT DIAGRAM**

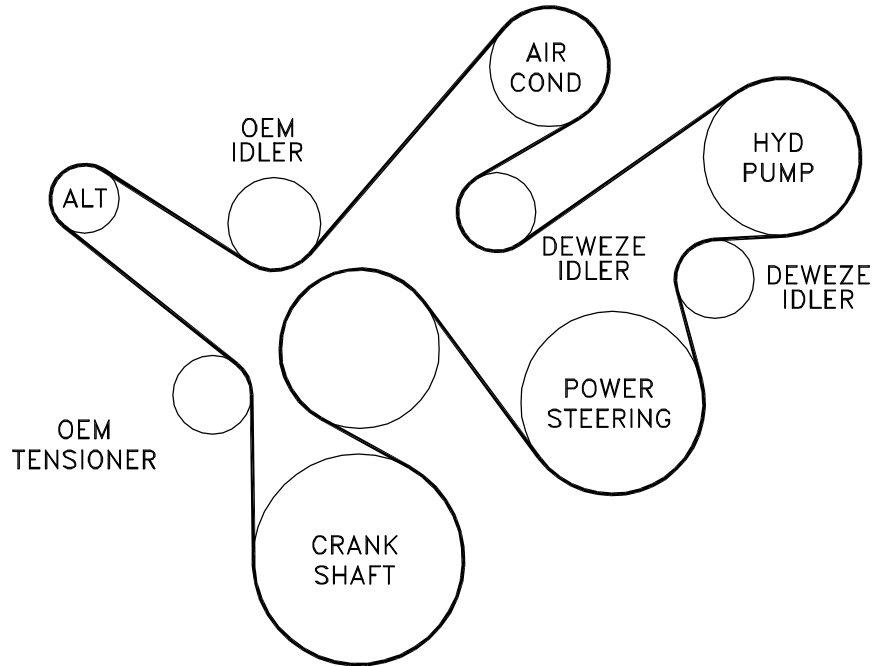
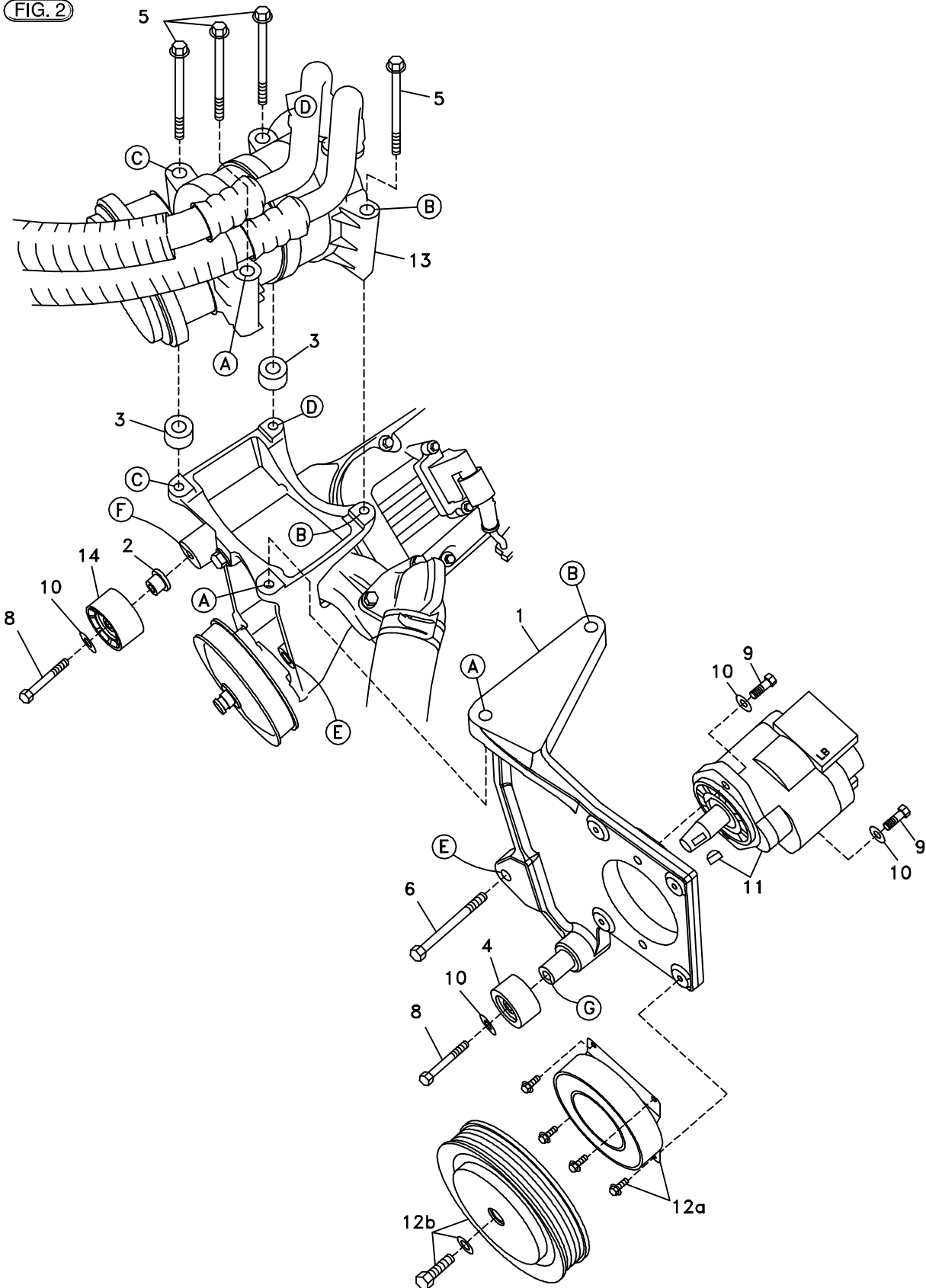


FIG. 2



# DewEze

## Clutch Pump Kit

Clutch Pump Kit  
700404  
Chevy 8.1L  
4500, 5500  
2003-

# INSTALLATION INSTRUCTIONS

---

1. Disconnect the battery.
2. Remove the air filter canister to get access to the air conditioner bolts.
3. Remove OEM belt.
4. Remove the OEM bolt from the lower air conditioner bracket at Location E. Remove the four OEM air conditioner compressor bolts. Lift the compressor up and set the .75" spacers (3) on the left side of the air conditioner mounting bracket at Location C and D. Set the compressor down on the spacers and thread two M10 x 100 bolts (5) through the compressor and the spacers and into the A/C mounting bracket. Just start the bolts in - do not tighten yet.
5. Place the top plate of the engine bracket (1) between the A/C bracket and the compressor at Locations A and B. Thread two M10 x 100 bolts (5) here. Tighten all four compressor bolts. Insert the M10 x 140 bolt (6) into the hole at Location E and tighten.
6. Mount the pump (11) to the back of the pump plate (1) with two 3/8 x 1 1/4 bolts (9) and two 3/8 flat washers (10). Attach the clutch coil (12a) to the pump plate with four 1/4 x 1/2 flange bolts. Attach the clutch pulley (12b) with the 5/16 x 1 1/4 bolt with heavy flat washer.
7. Place a 3/8 flat washer (10) on one of the M10 x 45 bolt (8) and insert it through the 2.5" dia. idler pulley (4) threading it into the boss at Location G.
8. Insert the idler bushing (2) into the 3.0" dia. idler pulley (14). Place a 3/8 flat washer (10) on the M10 x 45 bolt (8) and insert through the front of the idler threading it into the hole at Location F.
9. Install the belt (15) as shown in the diagram (Fig. 1).
10. Run the engine and check for any clearance or alignment problems. Adjust as needed.