

Bracket Assy.	711537 (Inc. items 1-4, 21)
Bolt Packages:	
Bracket	711538 (Inc. items 5, 13-16, 22, 23, 30-32)
Pulley	None
Idler pulley	711539 (Inc. items 6, 12, 24-26, 29)
Idler bracket	None
Tensioner	None

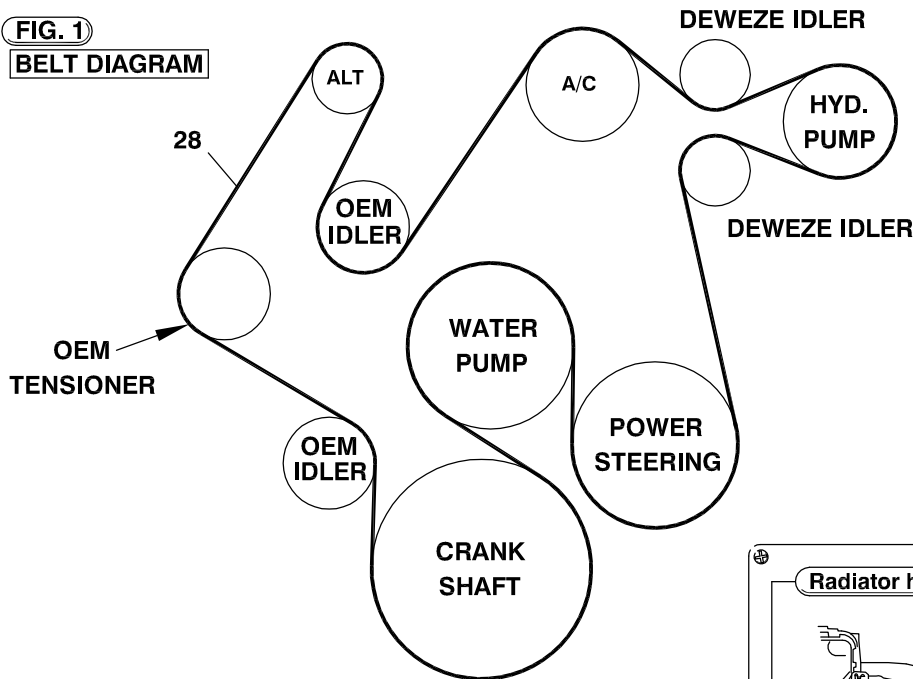
Make	Dodge
Engine	5.7L
Fuel	Gas
Year	2003-
Equipment	A/C
Revised	F 12-26-07

Item	Part No.	Description
1.	711532	Pump plate
2.	711533	Pump plate mount
3.	711534	A/C lift bracket
4.	711535	Bushing .965" overall
5.	711536	Spacer, rear 2.50"
6.	711180	Idler bushing, .945" shoulder
7.	740294	Idler pulley, 3.00"
8.	*	Pump
9.	740148	Clutch
10.	OEM	Bracket
11.	110425	3/8-16 x 1 1/4 Bolt
12.	110676	3/8 Flat washer
13.	110184	M10 x 110 x 1.5 Bolt
14.	110739	M8 x 90 x 1.25 Bolt
15.	110435	3/8-16 x 1 1/2 Bolt
16.	110711	3/8-16 x 2 Socket head bolt
17.	OEM	Bolt
18.	OEM	Bolt
19.	OEM	Bolt
20.	OEM	Nut
21.	711540	Gusset, pump plate
22.	110465	3/8-16 x 1 1/4 Socket head bolt
23.	110487	M10 x 120 x 1.5 Bolt
24.	110400	3/8-16 x 2 Bolt
25.	711566	Bushing .800" shoulder
26.	110436	3/8-16 x 2 1/2 Bolt
27.	740242	Idler pulley, 2.50"
28.	740278	Belt, 7 groove
29.	711072	Idler bushing, .260"
30.	100499	Adel clamp, 1.75"
31.	110020	5/16-18 x 3/4 Carriage bolt
32.	110606	5/16-18 Wiz flange nut

* See Master List for pump part number.

FIG. 1

BELT DIAGRAM



Radiator hose hold down

FIG. 4

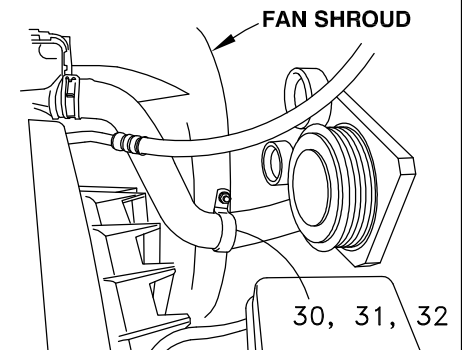
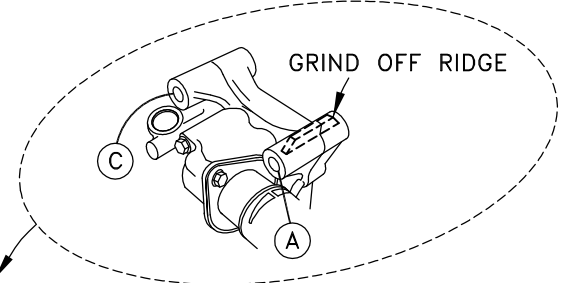
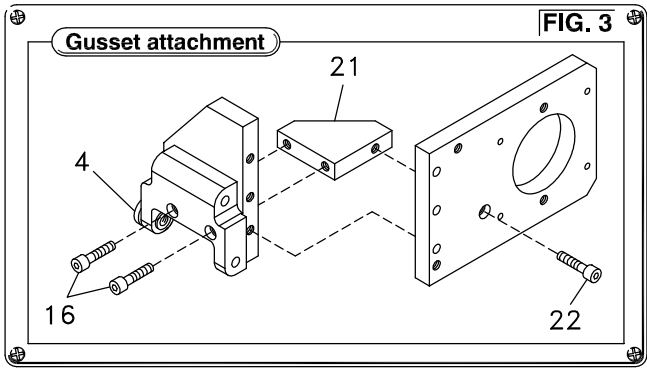
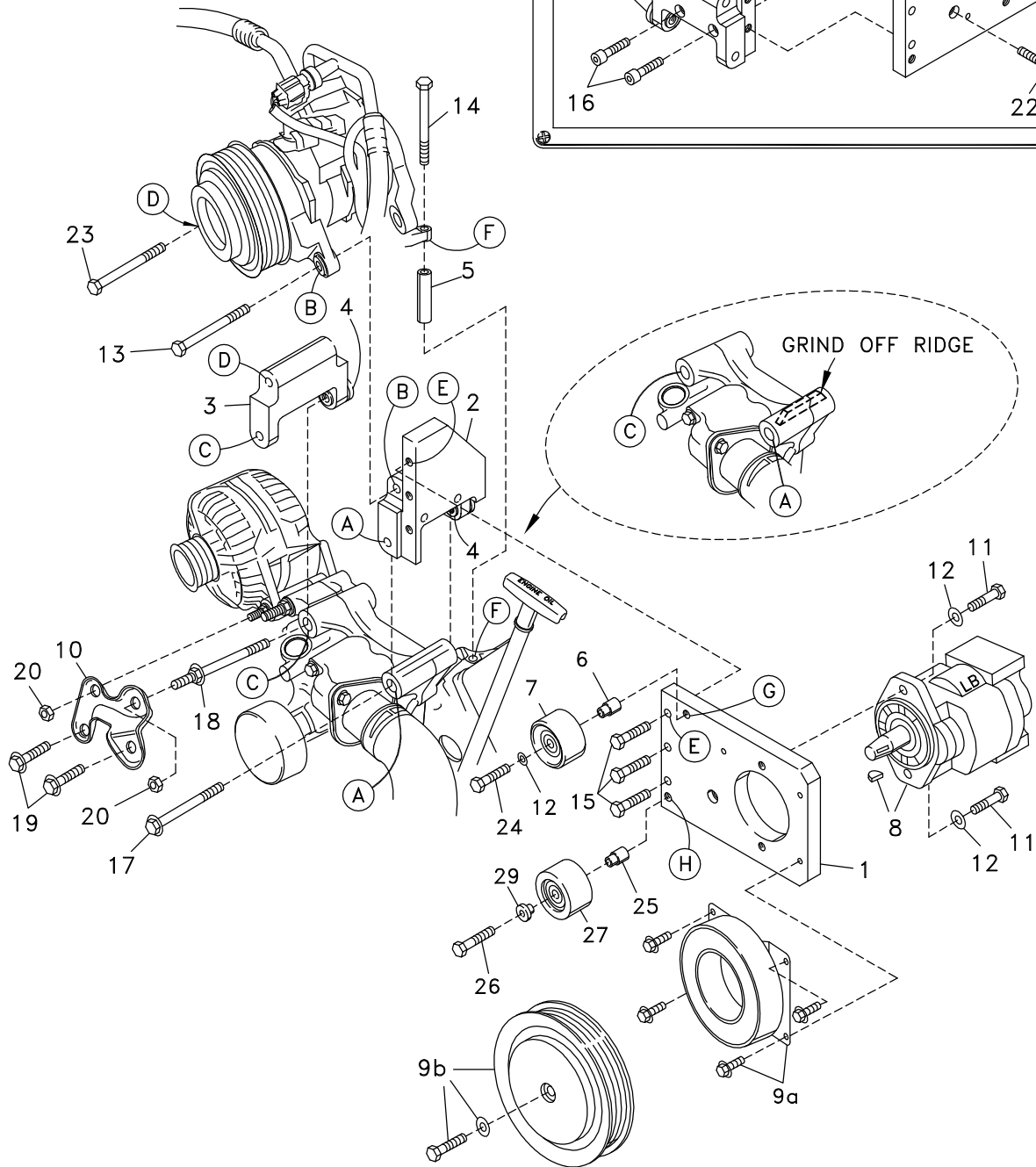
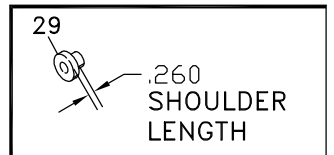
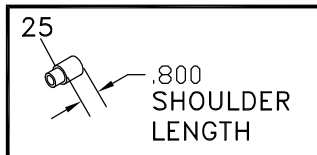
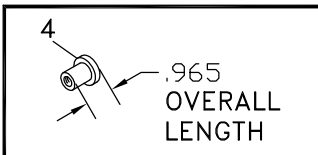


FIG. 2



IDENTIFYING THE BUSHINGS



DewEze

Clutch Pump Kit

Clutch Pump Kit
700414
Dodge 5.7L
With A/C
2003-

INSTALLATION INSTRUCTIONS

1. Disconnect the battery.
2. Remove the OEM belt.
3. Remove the OEM bracket (10) by removing two bolts (19) and two nuts (20). These will be used again.
4. Unbolt the air conditioner compressor at Locations A and C in front (bolts 17, 18) and the bolt at Location F behind the compressor. Bolts 17 and 18 will be used again.
5. Grind the ridge flush on top of the A/C mounting bracket at Location A.
6. Loosen the clamp from the top radiator hose at the radiator end. Rotate the hose down until it contacts the fan shroud. Tighten the hose clamp. Place the Adel clamp (30) around the hose as shown in Fig. 4. Using the clamp as a guide, drill a 3/8" hole through the clamp and into the fan shroud. Insert the 5/16 carriage bolt (31) through the underside of the shroud and through the hole in the clamp. Fasten this with the 5/16 wiz flange nut (31). This is to keep the hose away from the belt and clutch.
7. Assemble the pump plate (1) onto the pump plate mount (2) with three 3/8 x 1 1/2 bolts (15) at Location E in Fig. 2. Attach the gusset (21) with one 3/8 x 1 1/4 socket head bolt (22) through the front of the pump plate and with two 3/8 x 2 socket head bolts (16) through the pump plate mount as in Fig.3.
8. Lift the compressor up and set the A/C lift bracket (3) on the left side of the air conditioner mounting bracket at Location C. The end with the bushing goes to the back. Place the pump bracket assembly (1, 2, 21) at Location A. Hold the 2.50" spacer (5) under the compressor at Location F and insert the M8 x 90 bolt (14) in it. Set the compressor down on the brackets at Locations B and D. Thread the M10 x 120 bolt (24) into the compressor at Location D. Thread the M10 x 110 bolt (13) into Location B.
9. Replace the OEM bolt (17) back in Location A and the OEM bolt (18) back in Location C. Tighten these and all bracket mounting bolts.
10. Replace the OEM bracket (10) with the OEM bolts (19) and nuts (20). Tighten.
11. Insert the .945" idler bushing (6) into the back of the 3" stamped idler pulley (7). Place a 3/8 flat washer (12) on the 3/8 x 2 bolt (24) and insert through the front of the idler threading it into the hole at Location G. Insert the .800" idler bushing (25) into the 2.50" machined idler pulley (27). Place the .260" idler bushing (29) on the 3/8 x 2 1/2 bolt (26) and insert through the opposite side of the idler threading it into the hole at Location H.
12. Mount the pump (8) to the back of the pump plate (1) with two 3/8 x 1 1/4 bolts (11) and two 3/8 flat washers (12). Attach the clutch coil (9a) to the pump plate with four 1/4 x 1/2 flange bolts. Attach the clutch pulley (9b) with the 5/16 x 1 1/4 bolt with heavy flat washer.
13. Install the belt (28) as shown in the diagram (Fig. 1).
14. Run the engine and check for any clearance or alignment problems. Adjust as needed.