

Bracket Assy.	None	(Inc. items)
Bolt Packages:		
Bracket	711554	(Inc. item 10)
Idler pulley	711555	(Inc. item 3, 11, 12, 15, 17)
Pulley	711556	(Inc. items 12, 14, 15)
Tensioner	None	

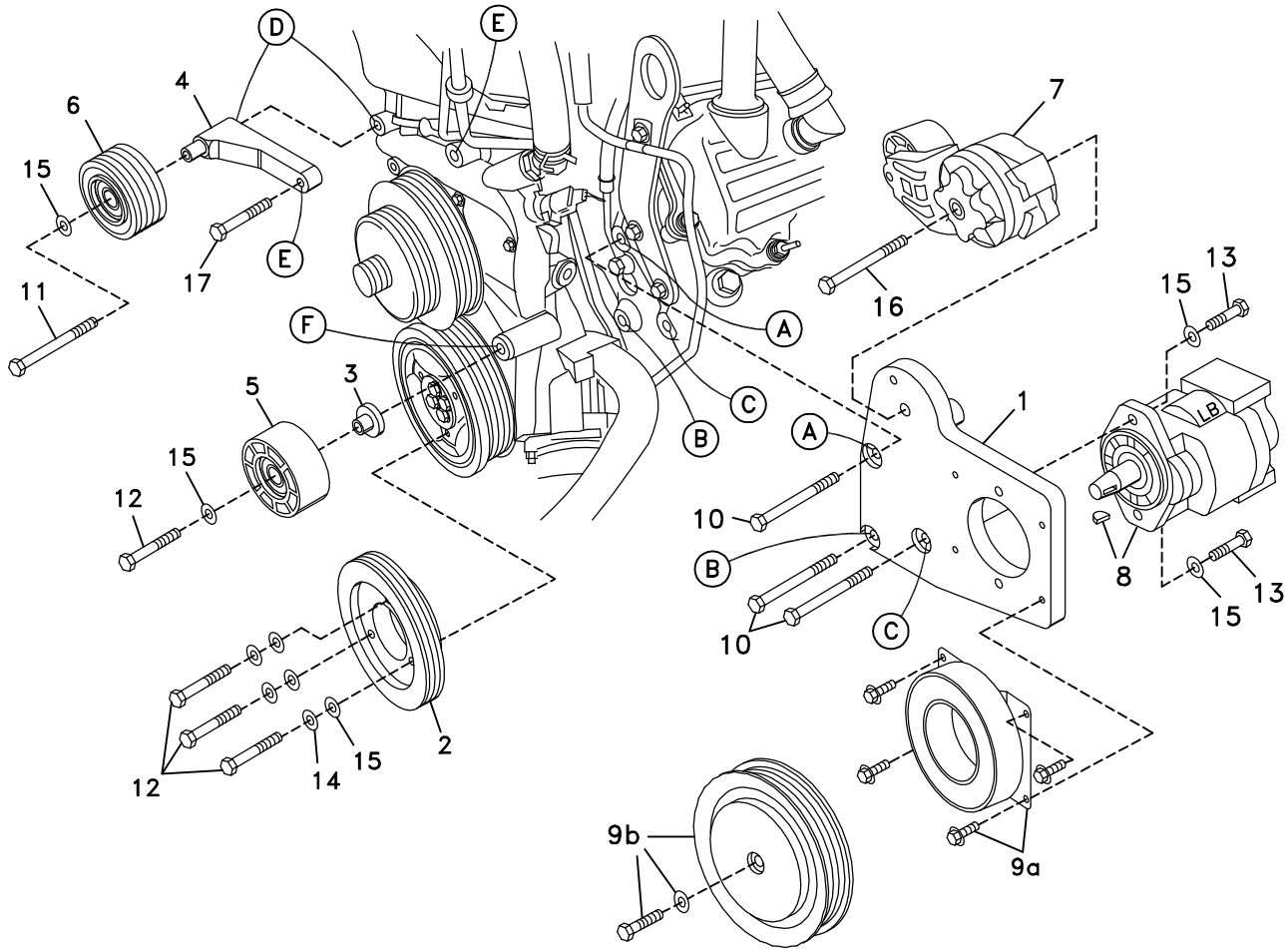
Make	Ford F-650, F-750
Make	Intrntl 4200 VT365
Engine	6.0L
Fuel	Diesel
Year	2003-
Equipment	A/C
Revised	A 11-4-03

Item	Part No.	Description
------	----------	-------------

1.	715006	Pump bracket	10.	110487	M10 x 120 x 1.5 Bolt
2.	740372	Crank pulley	11.	110183	M10 x 100 x 1.5 Bolt
3.	711552	Idler bushing .150"	12.	110210	M10 x 50 x 1.5 Bolt
4.	711577	Idler bracket	13.	110425	3/8-16 x 1 1/4 Bolt
5.	740261	Idler pulley, flat	14.	110672	3/8 Lock washer
6.	740143	Idler pulley, serpentine	15.	110676	3/8 Flat washer
7.	743004	Tensioner	16.	110567	M10 x 80 x 1.5 Bolt
8.	*	Pump	17.	110526	M10 x 40 x 1.5 Bolt
9.	740148	Clutch	18.	740305	Belt, Micro-V K080751

* See Master List for pump part number.

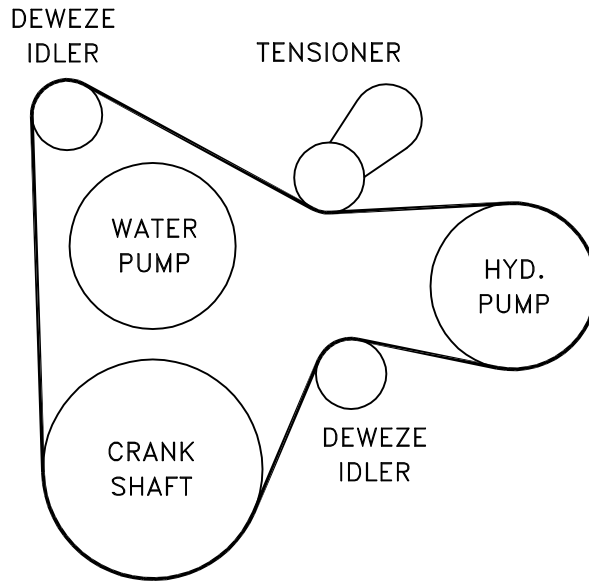
FIG. 1



(A),(B),(C)... Denotes bolt holes in engine to locate corresponding holes in Pump Brkt.

FIG. 2

BELT DIAGRAM



DewEze

Clutch Pump Kit

700417
Ford 6.0L
F-650, 750
Inter. 4200
VT365

2003-

INSTALLATION INSTRUCTIONS

1. Disconnect the battery.
2. Mount the crankshaft pulley (2) with three M10 x 50 bolts (12) with Loctite®, three 3/8 lock washers (14), and three 3/8 flat washers (15).
3. Place the serpentine idler (6) on the idler bracket (4) and mount at Location D using the M10 x 100 bolt with Loctite® (11) and a 3/8 flat washer (15), and at Location E using the M10 x 40 bolt (17) with Loctite®.
4. Mount the pump (8) onto the pump bracket (1) using two 3/8 x 1 1/4 bolts (13) and two 3/8 flat washers (15). Place the fittings on the pump. Mount the clutch coil (9a) to the pump bracket using four 1/4 x 1/2 flange bolts. Mount the bracket to the engine using three M10 x 120 bolts (10) with Loctite® at Locations A, B, and C. The wire bundle on the truck that runs right where the pump will go may have to be adjusted to clear the fittings on the pump.
5. Insert the idler bushing (3) into the flat idler (5) and mount at Location F using the M10 x 50 bolt (12) with Loctite® and a 3/8 flat washer (15).
6. Mount the tensioner (7) to the pump bracket with the M10 x 80 bolt (16) placing the locator pin on the back of the tensioner in the small hole at the top.
7. Attach the clutch pulley (9b) to the pump shaft with the 5/16 x 1 1/4 bolt and heavy flat washer.
8. Install the belt (18) as shown in the diagram (Fig. 2).
9. Run the engine and check for any clearance or alignment problems. Adjust as needed.