



# Clutch Pump Kit

# 700524

## International TerraStar MF7, 2011+, A Pump, Rear Port

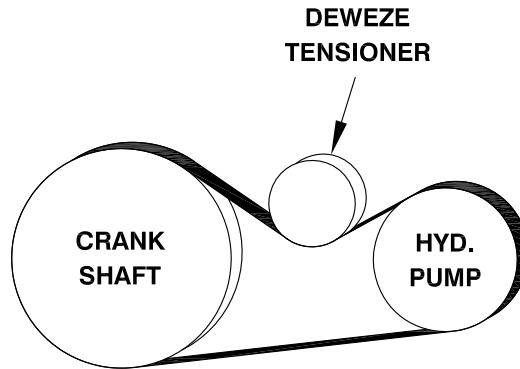
**BOLT PACKAGES:**

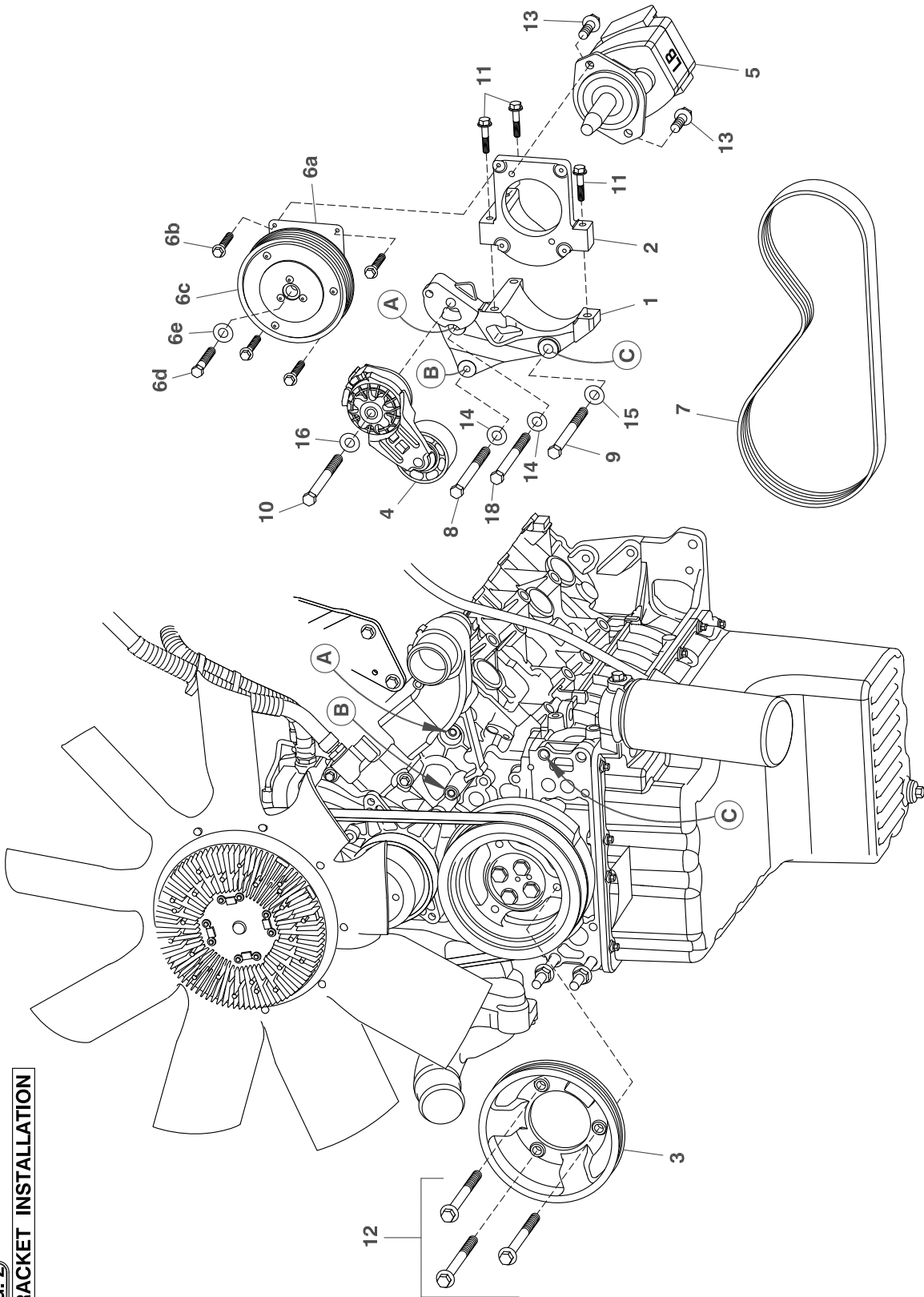
BRACKET	716088 (Inc. item 8-11, 14-16, 18)
IDLER PULLEY	None
IDLER BRKT	None
TENSIONER	None
CRANK PULLEY	716089 (Inc. item 12)

1-28-11	ISSUE DATE	C	2-10-14	REVISION DATE
---------	------------	---	---------	---------------

Item	Part No.	Description
------	----------	-------------

1.	722052	Engine bracket	11.	110923	M8 x 1.25 x 40 Flange head bolt
2.	716087	Pump bracket	12.	110953	M10 x 1.5 x 30 Flange head bolt
3.	722051	Crankshaft pulley	13.	110440	3/8-16 x 1 Flange bolt
4.	740431	Tensioner	14.	110703	M8 Flat washer
5.	*	Pump	15.	110691	M12 Flat washer
6.	742016	Clutch	16.	110955	M10 Flat washer
7.	742002	Belt, Mlcro-V K060425	17.	102059	Cable tie, .5" x 20"
8.	110739	M8 x 1.25 x 90 Bolt	18.	110952	M8 x 1.25 x 100 Bolt
9.	110954	M12 x 1.75 x 110 Bolt			
10.	110567	M10 x 1.5 x 80 Bolt			

**FIG. 1****BELT DIAGRAM**



**FIG. 2**  
**BRACKET INSTALLATION**

# DEWEZE Clutch Pump Kit 700524

International Terrastar, A Pump, 2011 +

## INSTALLATION INSTRUCTIONS

1. The installation of this kit requires trained decision-making concerning clearances, tying components together, rerouting, or relocating OEM components, etc. It is impossible to describe all of the clearance and vibration points, etc. in the installation instructions. Therefore, the technician must exercise professional judgment to achieve the best quality installation.  
**Note: Installation of entire kit is depicted and best performed from underneath the truck.**
2. Disconnect the battery.
3. Remove the M8 bolt at Location B and the M12 motor mount bolt at Location C.
4. Place engine bracket (1) up and in the engine bay installing it onto Location A using M8 x 100 bolt (18) with M8 flat washer (14), and at Location B using M8 x 90 bolt (8) with M8 flat washer (14) and at Location C using M12 x110 bolt (9) with flat washer (15).
5. Install pump (5) onto pump bracket (2) oriented as in Fig. 2 using two 3/8 x 1 bolts (13). Install fittings into pump at this time if desired. Slide pump and bracket assembly into the engine bay from below and rest it on the front cross member just inside the driver side frame rail.
6. Place pump bracket assembly (parts 2&5) onto engine bracket and install with three M8 x 40 flange head bolts (11).
7. Attach clutch coil (6a) with four 1/4 x 1/2 flange bolts (6b) supplied with clutch. Attach clutch pulley (6c) to pump shaft with 5/16NF x 1 1/4 bolt (6d) and heavy washer (6e) supplied with clutch.
8. Install belt tensioner (4) with M10 x 80 bolt (10) and flat washer (16) onto engine bracket (1). Make sure the locator pin on tensioner fits into locator hole on engine bracket.
9. Check face of crank pulley for any debris that will interfere with installing the auxiliary pulley (3). Install the supplied pulley (3) using three M10 x 30 flange head bolts (12) making sure the pulley is centered over the pilot.
10. Install belt (7) as shown and check for clearance. **Use the cable ties (17) to tie the transmission cooler lines down to the crossmember away from the belt.**
11. Reconnect the battery.
12. Run the engine and check for any clearance or alignment problems. Adjust as needed.