

Dodge 5.7L Hemi: D, 2009-11, PH14 Pump, Side Port, 9 gpm Max.

BOLT PACKAGES:

BRACKET	711961 (Inc. item 9-11, 14, 21)
IDLER PULLEY	None
CRANK PULLEY	711963 (Inc. item 12, 13, 18, 19)
TENSIONER	None
FAN SPACER	None

3-9-09 ISSUE DATE B 5-8-09 REVISION DATE

Item Part No. Description

1.	711986	Pump bracket	13.	110878	M14 Flat washer
2.	-----	-----	14.	110875	M10 x 1.5 x 60 Socket head bolt
3.	-----	-----	15.	*	Pump
4.	-----	-----	16.	-----	-----
5.	711984	Shim, Reservoir	17.	OEM	Coolant/washer reservoir
6.	740417	Pulley, crankshaft	18.	110808	3/8-16 x 3/4 Socket head bolt
7.	742016	Clutch	19.	110879	Shim, .352 ID x .032 thk
8.	740418	Tensioner	20.	110440	3/8-16 x 1 Flange bolt
9.	110873	M8 x 1.25 x 150 Bolt	21.	110703	M8 Flat washer
10.	110874	M8 x 1.25 x 160 Bolt	22.	742073	Belt, Micro-V K060523
11.	110761	M8 x 1.25 x 110 Bolt			
12.	110876	M14 x 1.5 x 120 Bolt			

FIG. 2
COOLANT/WASHER RESERVOIR SHIM PLACEMENT.
2009, 2010 TRUCKS ONLY.

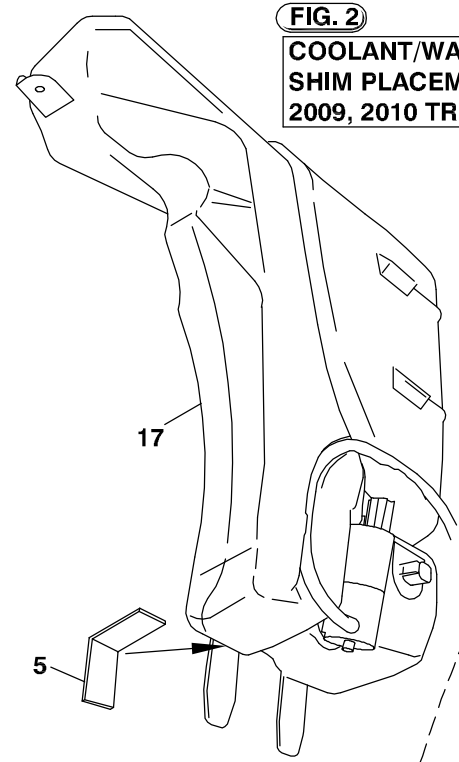


FIG. 1
BELT DIAGRAM

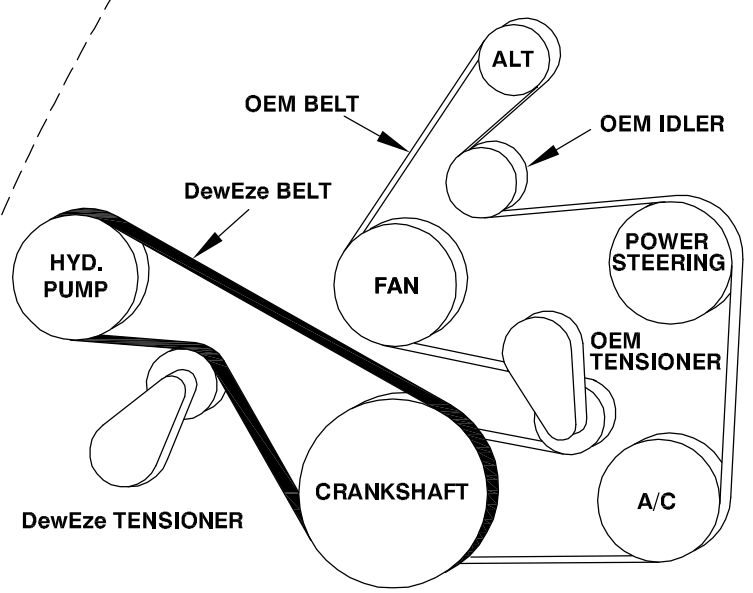


FIG. 3
BRACKET, PULLEY INSTALL

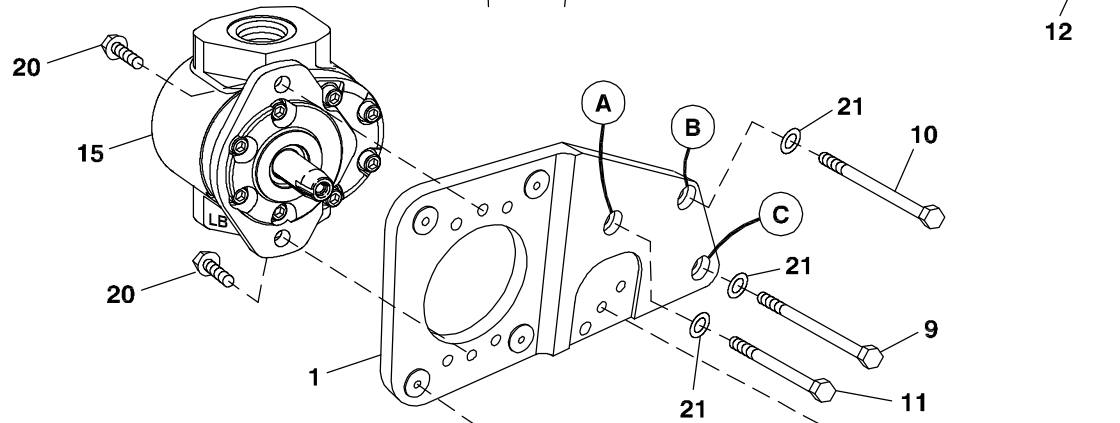
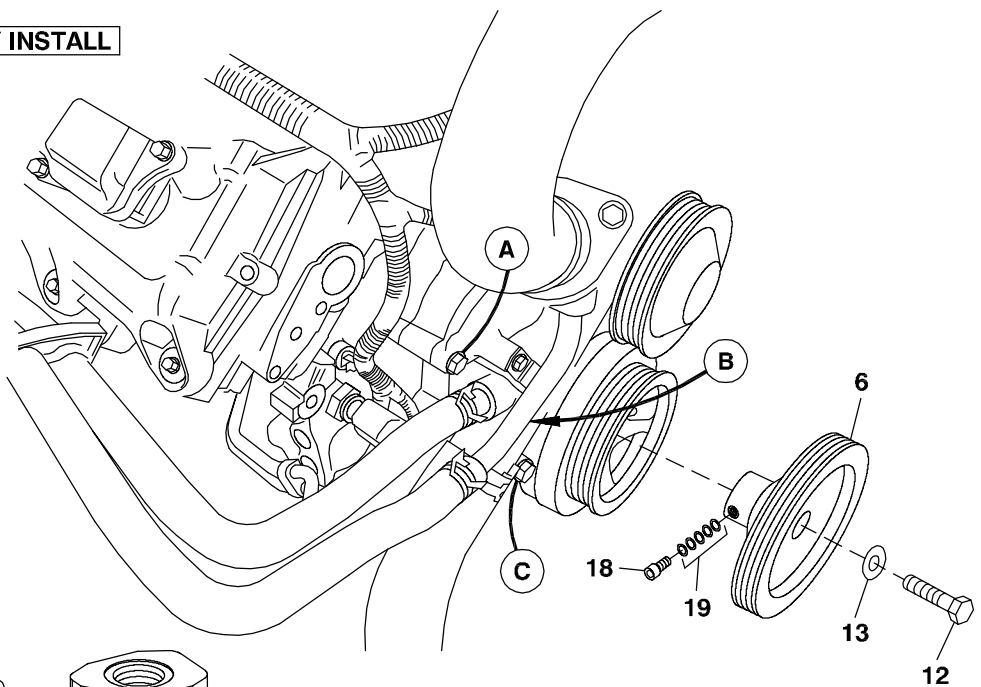
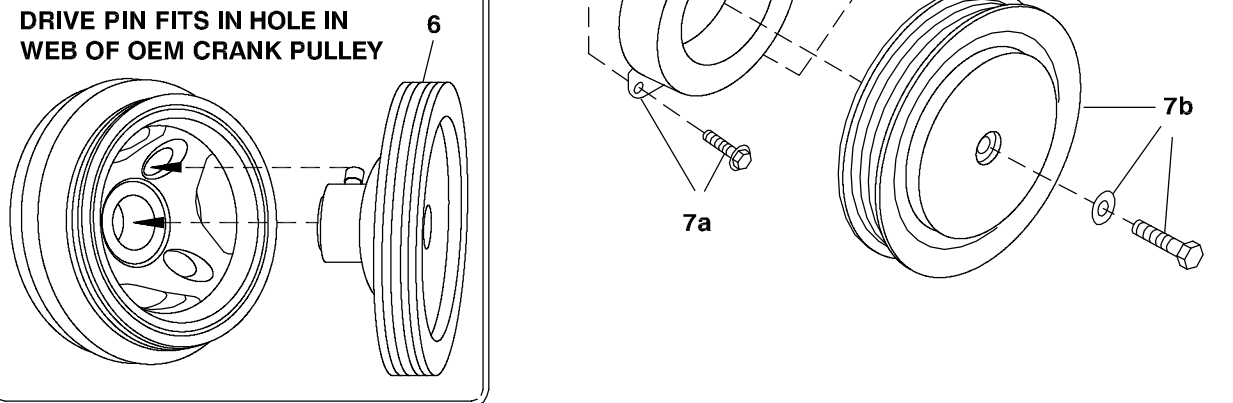


FIG. 4
CRANK PULLEY MOUNTING

DRIVE PIN FITS IN HOLE IN WEB OF OEM CRANK PULLEY



DewEze Clutch Pump Kit 700531

Dodge 5.7L Hemi, 2009-11, 9 GPM Max.

INSTALLATION INSTRUCTIONS

1. The installation of this kit requires trained decision-making concerning clearances, tying components together, rerouting, or relocating OEM components, etc. It is impossible to describe all of the clearance and vibration points, etc. in the installation instructions. Therefore, the technician must exercise professional judgment to achieve the best quality installation.
2. Disconnect the battery.
3. On 2009-2010 trucks, remove the OEM coolant/washer reservoir by removing two bolts on top of fan shroud and lifting it out. This does not apply to 2011 trucks.
4. Remove the OEM belt.
5. Remove OEM bolt from crankshaft dampener. Install the DewEze crank pulley (6) with the M14 bolt (12) and M14 washer (13) making sure drive pin indexes to one of the holes in the OEM pulley web. Also be sure the pilot centers in the OEM pulley.
6. Rotate the radiator and heater hose clamps to point up so they clear the pump bracket. Remove the OEM bolts at Locations A, B, and C. Install the pump bracket (1) with the M8 x 110 bolt (11) at Location A. Place the M8 x 160 bolt (10) at Location B. Place the M8 x 150 bolt (9) at Location C. Note: The tube below Hole A may need to be bent away from the back of the bracket after installation.
7. Install tensioner using the M10 x 60 socket head bolt (14). Install the pump with two 3/8 x 1 flange head bolts (20). Mount the clutch coil (7a) to the pump bracket with four 1/4 x 1/2 flange bolts. Mount the clutch pulley (7b) to the pump shaft with the 5/16 x 1 1/4 bolt and heavy flat washer making sure the key is in place on the shaft.
8. Install belt (22) as shown in Fig. 1.
9. Remove the two rubber bushings that hold the top of the radiator to the frame of the truck. Cut the bushings in half and replace as shown in Fig. 5. The radiator will shift forward as the screws are tightened.
10. Reinstall the coolant/washer reservoir with the shim (5) on the left tab as shown in Fig. 2. Make sure there is clearance between the reservoir and the clutch pulley.
11. Reconnect the battery.
12. Run the engine and check for any clearance or alignment problems. Adjust as needed.

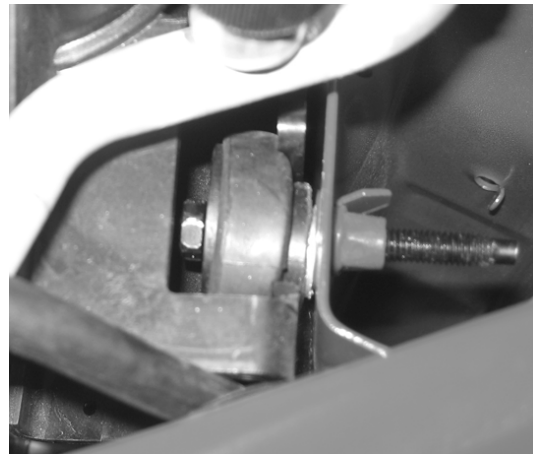


Fig. 5