



CLUTCH PUMP KIT

KIT NUMBER RAMCUMMINS 6.7
700607
DEWEZ HYDRAULICS

Ram, Cummins 6.7L:D, 2019+, A/C, PH14 Pump: 7 - 9GPM

BOLT PACKAGES:

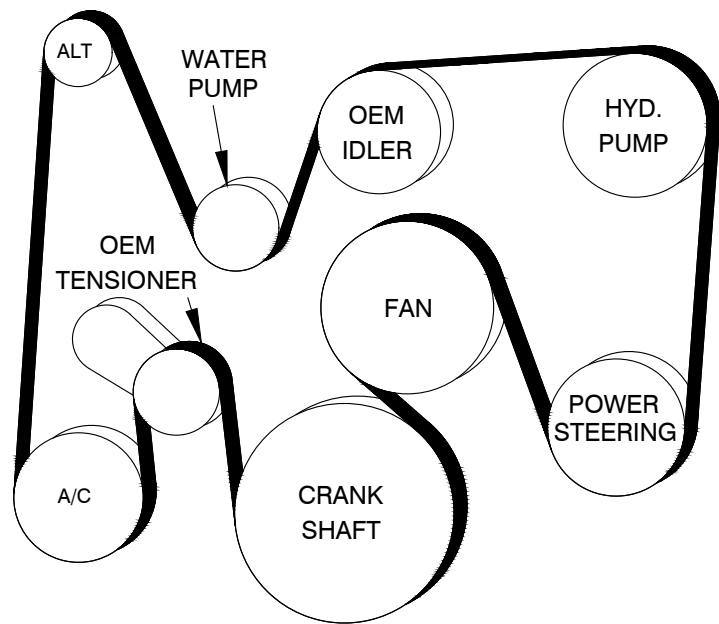
BRACKET	716277 (Inc. items 10-12,14,19)	702184	BELT DIAGRAM
IDLER PULLEY	None		
CRANK PULLEY	None		
TENSIONER	None		
FAN SPACER	None	6/4/20	ISSUE DATE
		Rev. A:	REVISION DATE

Item | Part No. | Description

1.	716169	Pump plate	12.	102083	Clamp, .25 ID x 75 wide
2.	-----	-----	13.	OEM	Coolant hose clamp
3.	716158	Coolant hose bracket	14.	112072	M10 x 1.5 x 40 Flange bolt
4.	-----	-----	15.	-----	-----
5.	-----	-----	16.	-----	-----
6.	-----	-----	17.	-----	-----
7.	-----	-----	18.	-----	-----
8.	*	Pump	19.	112071	M8 x 1.25 x 50 Flange bolt
9.	742009	Clutch	20.	110437	3/8-16 x 3/4 Flange bolt
10.	112073	M6 x 1.0 x 16 Flange bolt	21.	742063	Belt, Micro-V K081298
11.	112074	M6 x 1.0 Flange nut			

*Part number to be determined at time of order.

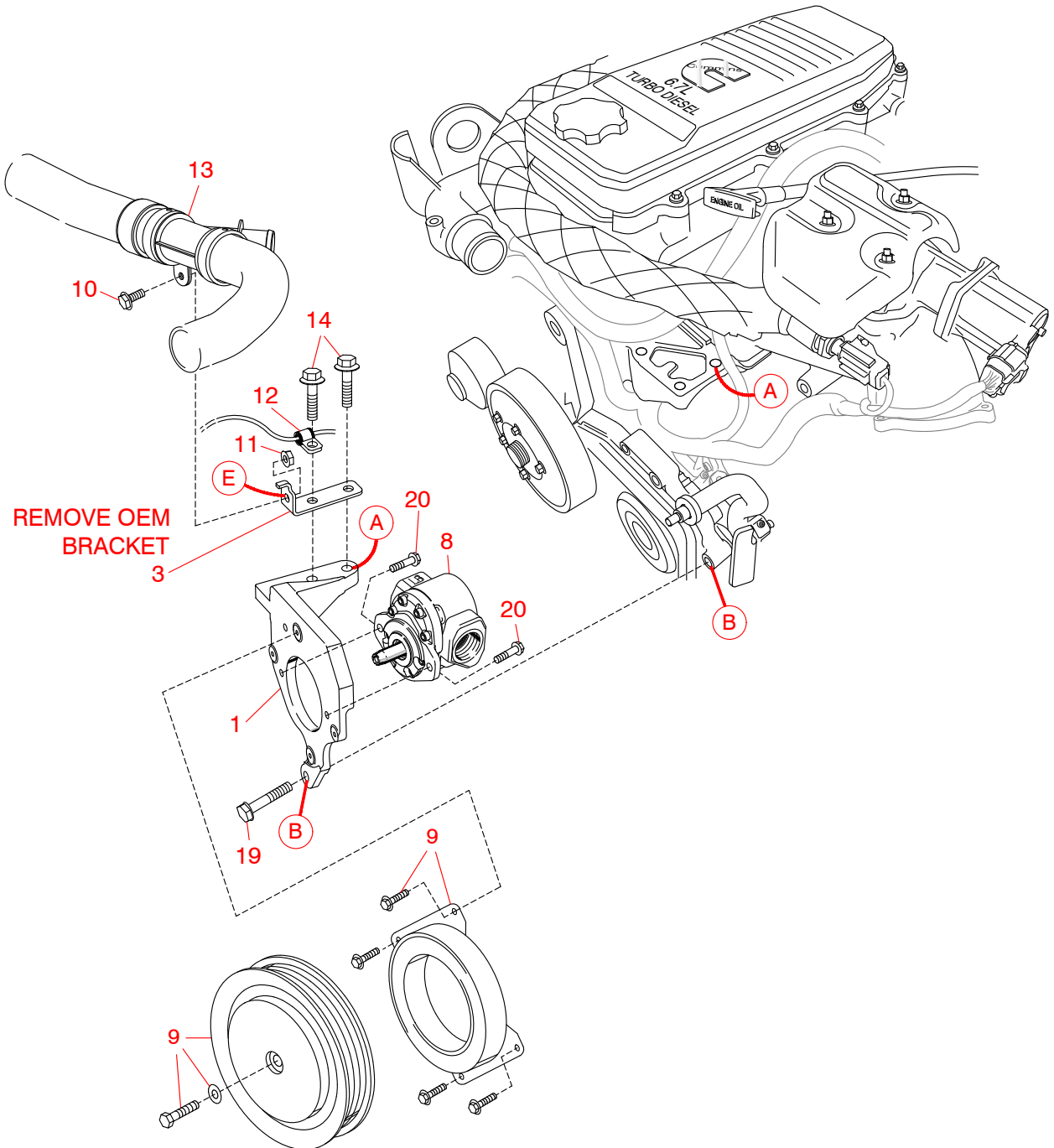
FIG. 1
BELT DIAGRAM



harperindustries.com



FIG. 2



DewEze Clutch Pump Kit 700607

Cummins 6.7L, 2019+, PH14 Pump: 7-9 GPM

INSTALLATION INSTRUCTIONS

Record Pump Model No. _____ and Serial No. _____ for future reference.

Left and right directions are standing in front of the truck looking at the engine.

- The installation of this kit requires trained decision-making concerning clearances, tying components together, rerouting, or relocating OEM components, etc. It is impossible to describe all of the clearance and vibration points, etc. in the installation instructions. Therefore, the technician must exercise professional judgment to achieve the best quality installation.***
- If truck comes equipped with dual alternators the truck must first be reprogrammed at the dealer for single alternator operation. The secondary alternator located in the place of installation for the clutch pump must be removed; disconnected wires and cables must be sealed, covered or removed. The alternator bracket attached to the engine at Location A in Fig. 2 must also be removed. Proceed with installation as instructed.
- Disconnect the battery.
- Remove the OEM belt.
- Remove the OEM coolant hose bracket (similar to DewEze item 3).
- Install DewEze belt (21) on the OEM pulleys. It is easier to access the pulleys before the pump is installed.
- Bolt pump (8) onto pump plate (1) with two 3/8 x 3/4 flange bolts (20).
- Run the hoses into the engine compartment. Pull them out far enough to attach them to the pump.
- Place the new coolant hose bracket (3) on top of the two holes on the pump bracket (1) at Location A, and the small wire clamp (12) with the clutch wire run through it on top of that on the front hole. Attach the top of the pump bracket (1) to the engine at Location A using two M10 x 40 bolts (14). Attach the bottom of the pump bracket to the power steering bracket at Location B with the M8 x 50 bolt (19). **Snug all bolts lightly. Tighten the M8 x 50 bolt (19) first, then tighten the two M10 x 40 bolts (14).**
- Attach coil (9) with four 1/4 x 1/2 flange bolts. Torque these to 6 ft-lb. Attach clutch pulley (9) to pump shaft with 5/16NF x 1 1/4 bolt and heavy washer. Torque to 14 ft-lb.
- Attach the OEM coolant hose clamp (13) to the DewEze clamp bracket (3) with the M6 x 16 bolt (10) and the M6 nut (11) at Location E.
- Finish installing the belt (21) onto the pump pulley as shown in the diagram (Fig. 1).
- Install air box. Install intercooler cover. Connect battery.
- Run the engine and check for any clearance or alignment problems.