



Clutch Pump Kit

700536

Freightliner M2 with Cummins, 2011+, A PH14 Pump, Side Port

BOLT PACKAGES:

BRACKET	716104 (Inc. item 8-11, 14, 15)
IDLER PULLEY	None
IDLER BRKT	None
TENSIONER	None
CRANK PULLEY	716105 (Inc. item 12)

8-11-11	ISSUE DATE	B	2-10-15	REVISION DATE
---------	------------	---	---------	---------------

Item | **Part No.** | **Description**

1.	715035	Engine bracket	9.	110140	M8 x 1.25 x 60 Bolt
2.	716101	Pump bracket	10.	110262	M10 x 1.5 x 75 Bolt
3.	740434	Crankshaft pulley	11.	110161	3/8-16 x 1.25 Flange head bolt
4.	743011	Tensioner	12.	110989	M10 x 1.5 x 50 Flange head bolt
5.	*	Pump	13.	110437	3/8-16 x 3/4 Flange head bolt
6.	742016	Clutch	14.	110703	M8 Flat washer
7.	742090	Belt, Mlcro-V K060532	15.	110955	M10 Flat washer
8.	110108	M8 x 1.25 x 85 Bolt			

FIG. 1
BELT DIAGRAM

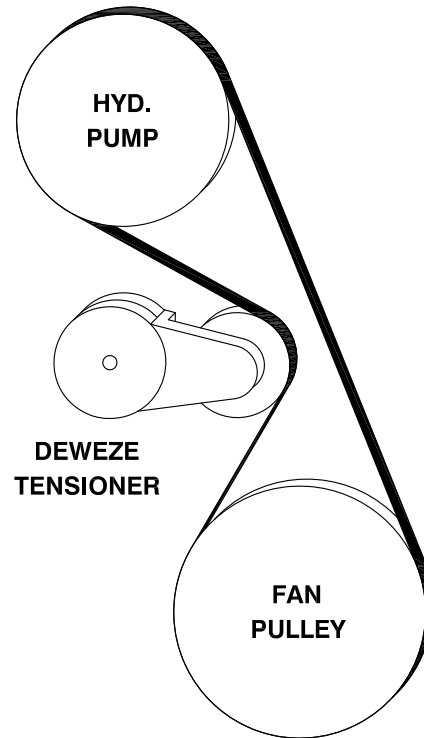
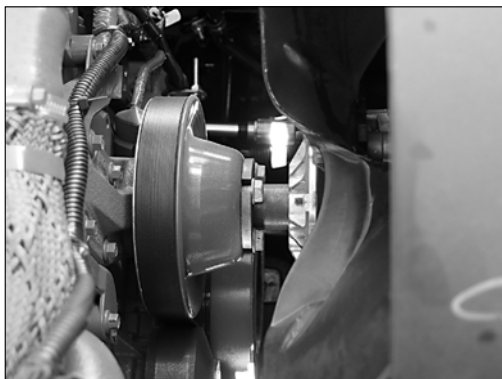


FIG. 3
FAN CONFIGURATION

THIS KIT WILL FIT ONLY TRUCKS WITH THIS FAN CONFIGURATION.



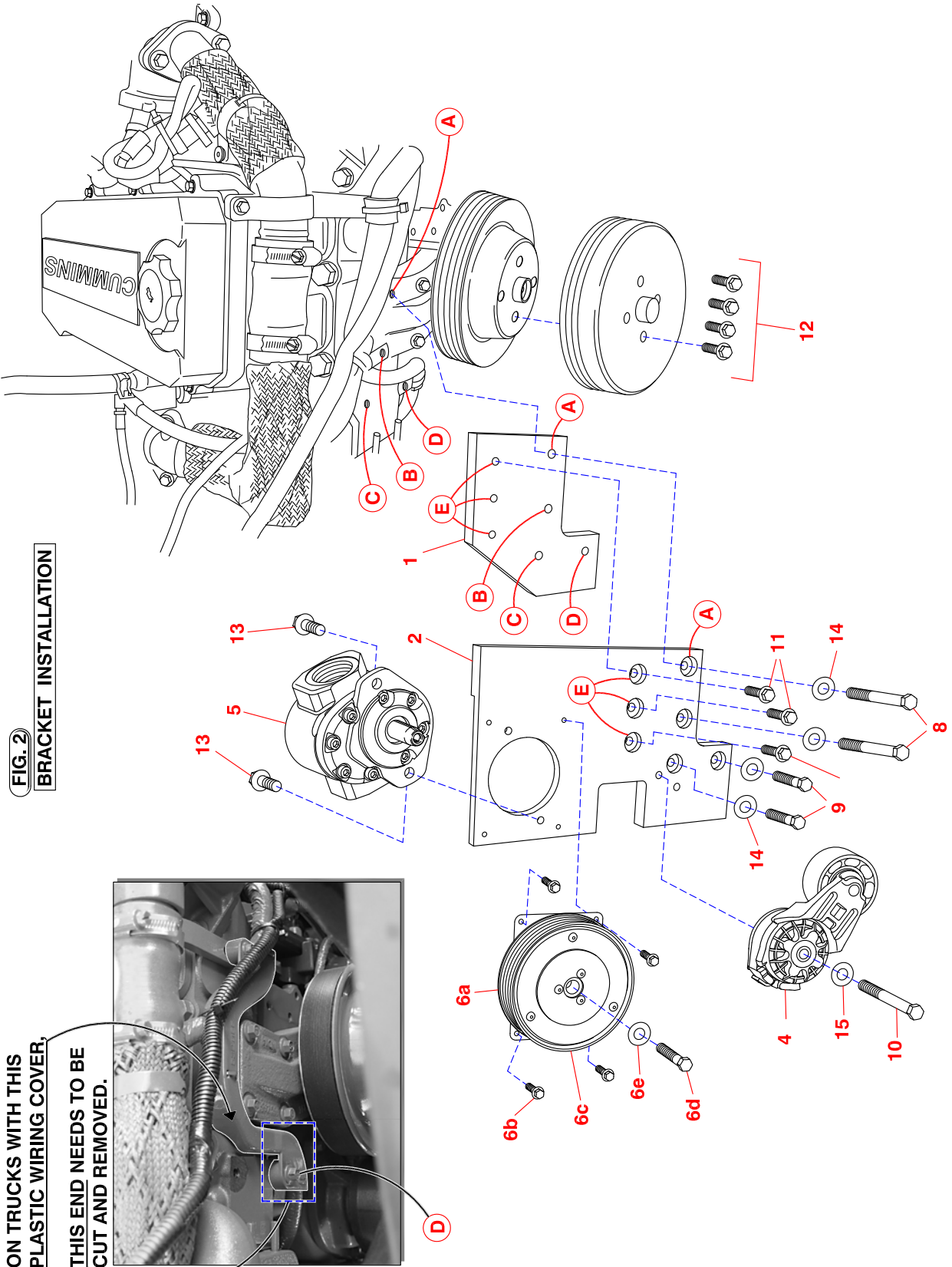


FIG. 2
BRACKET INSTALLATION

ON TRUCKS WITH THIS
PLASTIC WIRING COVER,
THIS END NEEDS TO BE
CUT AND REMOVED.

DewEze Clutch Pump Kit 700536

Freightliner M2 w/Cummins, 2011 +, A PH14 Pump

INSTALLATION INSTRUCTIONS

1. The installation of this kit requires trained decision-making concerning clearances, tying components together, rerouting, or relocating OEM components, etc. It is impossible to describe all of the clearance and vibration points, etc. in the installation instructions. Therefore, the technician must exercise professional judgment to achieve the best quality installation.
2. Disconnect the battery.
3. Release tension on the OEM belt.
4. The fan will need to be removed for pulley installation. Remove the bolts and place fan forward into the fan shroud.
5. Slide DewEze drive pulley (3) over existing fan pulley, making sure to align the pilot. Put fan onto Deweze pulley without bolting it on yet. Check to see if the air supply line for the fan clutch needs to be moved forward to clear fan in its new location. If so, remove the air line and the tube that passes through the shroud and drill a new hole in the shroud further forward and reattach the air line. Push fan forward into the shroud again to maintain room for bracket installation.
6. There are small clamps holding wiring harnesses at Locations B and D. These clamps and the bolts holding them need to be removed. On trucks with a plastic wiring cover, as shown in the photo in Fig. 2, the one end highlighted needs to be cut off to allow the bracket to set against the block. Remove the bolt at Location A. Loosen the front bolt in the passenger side radiator brace that has a wiring harness clip attached to it. Rotate the clip slightly to clear the pump.
7. The engine bracket (1) and pump bracket (2) will mount onto the two upper hole locations of the fan drive hub casting (Location A and B) with two M8 x 85 bolts (8) and two M8 flat washers (14), and two holes directly to the passenger side of these holes, (Location C and D) with two M8 x 60 bolts (9) and two M8 flat washers (14). The two brackets bolt together with three 3/8 x 1 1/4 flange head bolts (11) at Location E.
8. Install the belt tensioner (4) using the M10 x 75mm bolt (10) with M10 flat washer (15).
9. Install the pump using the 3/8 x 3/4 flange head bolts (13).
10. Attach clutch coil (6a) with four 1/4 x 1/2 flange bolts (6b) supplied with clutch. Attach clutch pulley (6c) to pump shaft with 5/16NF x 1 1/4 bolt (6d) and heavy washer (6e) supplied with clutch.
11. Slide belt (7) onto the assembly before replacing the engine fan. Reinstall the engine fan, aligning the pilot on the Deweze pulley to the fan, with four M10x50 flange head bolts (12). Now place belt on the drive pulley.
12. Reconnect the battery.
13. Run the engine and check for any clearance or alignment problems. Adjust as needed.