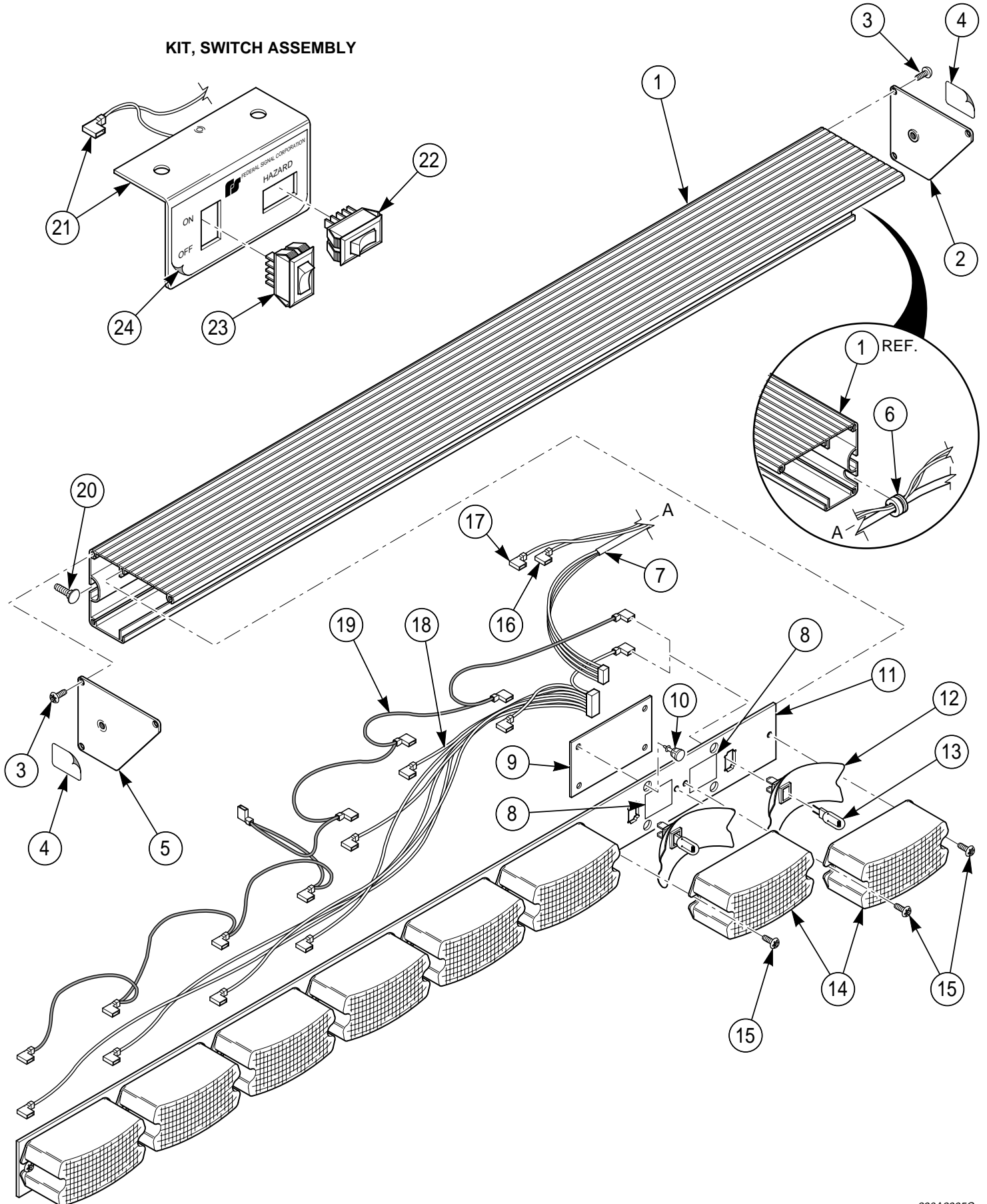


KIT, SWITCH ASSEMBLY



SignalMaster™

Models 321102, SM428A-24, 321112 and 321114

(SM428A)

(SM518A)

(SM518A-24)

PPL 0297

PARTS LIST

February 2003

Item No.	Description	Part No.	321102 (SM428A)	SM428A-24	321112 (SM518A)	321114 (SM518A-24)
1	Extrusion, SM428A	Z8573087A-01	1	1	0	0
	Extrusion, SM518A	Z8573087A-11	0	0	1	1
2	Cap, Left End	Z8573106A	1	1	1	1
3	Screw, #8-32 x 3/8" Type B, Slotted Torx Pan Hd.	Z7011200-06	6	6	6	6
4	Nameplate, Model SM428A / 321102		2	0	0	0
	Nameplate, Model SM428A-24		0	2	0	0
	Nameplate, Model SM518A / 321112		0	0	2	0
	Nameplate, Model SM518A-24 / 321114		0	0	0	2
5	Cap, Right End	Z8573105A	1	1	1	1
6	Grommet	Z8542A422A	1	1	1	1
7	Cable Assembly, 4 Conductor (15.5 ft.)	Z175846A	1	1	0	0
	Cable Assembly, 4 Conductor (35.5 ft.)	Z175846A-01	0	0	1	1
8	Label, Warning	Z1611408A	2	2	2	2
9	PC Board Assembly (12V)	Z2001228B	1	0	1	0
	PC Board Assembly (24V)	Z2001228B-01	0	1	0	1
10	Support, PC Board	Z8573013A	4	4	4	4
11	Plate, Mounting SM428A	Z8573109C-01	1	1	0	0
	Plate, Mounting SM518A	Z8573154C	0	0	1	1
12	Reflector & Terminal Assembly (12V)	Z8573180A	8	0	8	0
	Reflector & Terminal Assembly (24V)	Z8573180A-01	0	8	0	8
13	Lamp, 27W Halogen (12V)	Z8573007A	8	0	8	0
	Lamp, 20W Halogen (24V)	Z8573085A	0	8	0	8
14	Lens, Clear	Z8573001B	8AR	8AR	8AR	8AR
	Lens, Red	Z8573001B-01				
	Lens, Amber	Z8573001B-02				
	Lens, Blue	Z8573001B-03				
	Lens, Green	Z8573001B-04				
15	Screw, #10-32 x 1/4" Type TT, Torx Pan Hd.	Z7011163B-04	16	16	16	16
16	Wire, Terminated 14AWG (54" lg., Red) Pos.		1	1	1	1
17	Wire, Terminated 14AWG (54" lg., Blk.) Neg.		1	1	1	1
18	Wire Harness, Negative (SM428A)	Z175895A	1	1	0	0
	Wire Harness, Negative (SM518A)	Z175848A	0	0	1	1
19	Wire Harness, Positive (SM428A)	Z175894A	1	1	0	0
	Wire Harness, Positive (SM518A)	Z175847A	0	0	1	1
20	Bolt, Carriage 1/4-20 x 1/2"	Z7004A020-08	4	4	4	4
	Kit, Switch Assembly 12V(Includes items 21 thru 24)	Z8573157A	1	0	1	0
	Kit, Switch Assembly 24V(Includes items 21 thru 24)	Z8573157A-24	0	1	0	1
21	Assembly, Switch Bracket	Z8573155A	1	1	1	1
22	Switch, Rocker (3 Position) 12V	Z122A242B	1	0	1	0
	Switch, Rocker (3 Position) 24V	Z122334A	0	1	0	1
23	Switch, Rocker On-Off (2 Position)	Z122327A	1	1	1	1
24	Label, Switch Bracket	Z81461378A	1	1	1	1

DO NOT ORDER PARTS BY ITEM NUMBER.

Give model, description and part number.

When a part number is not supplied, the part is **NOT** available.

Refer to PARTS PRICE LIST (Part No. 1001) for prices of parts.

Federal Signal Corporation
2645 Federal Signal Drive
University Park, IL 60466

Printed in U.S.A.