



454101HL-02

▶ HighLighter® LED | Mini-Lightbars

FEATURES

- Low profile; only 2.7-inches tall and 15-inches long
- Uniform 360-degree light distribution; no dark spots or shadows
- Solaris® LED reflector technology for better optical efficiency and superior off-axis warning
- Patented ROC (Reliable Onboard Circuitry™) technology
- Pattern selection using MagnetSelect™ (keychain not included)
- Five-year LED warranty

APPROVALS

- SAE J845, Class 1

Low-profile LED mini lightbar provides 360-degree of light output

Only 2.7-inch tall (permanent mount), the HighLighter® LED mini-lightbar features Federal Signal's patented Solaris® LED reflector technology to re-direct light for substantially improved off-axis warning. Solaris reflectors provide 360-degree of light output for work zone warning.

Advanced circuitry keeps this lightbar on the road

HighLighter LED units incorporate Federal Signal's ROC (Reliable Onboard Circuitry™) technology, which eliminates 85% of potential failure points. The end result: Dependable and continuous visual warning with fewer repairs and a lot more time on the job.

As easy to install as they are to switch from one flash pattern to the next

The HighLighter LED suction-cup and magnet mount models include a cigarette lighter plug and built-in ON-OFF switch that makes them simple to install and just as simple to operate. Incorporated into the top of the LED dome is Federal Signal's innovative MagnetSelect™ feature (patent pending) that enables users to quickly, easily select from more than 19 user selectable flash patterns using a simple magnet (user provided).

Built for a variety of applications

The HighLighter LED mini-lightbar is available with Amber LEDs with a clear or amber dome. Suitable for a variety of applications—snowplows, landscaping, construction, repair and service vehicles, as well as law enforcement and fire apparatus.



On/Off control switch on cigarette plug magnet mount models



Specify model

Solid color, suction-cup mount, includes cigarette plug with on/off switch

454100HL-02 Amber dome, Amber LEDs

454100HL-25 Clear dome, Amber LEDs

Solid color, permanent mount

454101HL-02 Amber dome, Amber LEDs

454101HL-25 Clear dome, Amber LEDs

Solid color, magnet mount with cigarette plug included

454102HL-02 Amber dome, Amber LEDs

454102HL-25 Clear dome, Amber LEDs

Note: See Price Books for additional models

Accessories and Kits

SW2 Switch control

452340 Kit, magnetic mount, cigarette plug included

452341 Kit, suction-cup magnetic mount, cigarette plug included

452342 Kit, magnetic mount, no cigarette plug

454217 Kit, riser mount

454218 Kit, flat mount

454219 Kit, Roof Mount Bar (must be used when mounting a HighLighter on a roof mounting bar)

454220 Kit, switch, pattern select

210883SSG Self-leveling bracket

210960-46 46", Roof Mounting Bar

210960-54 54", Roof Mounting Bar

210960-65 65", Roof Mounting Bar

Specifications

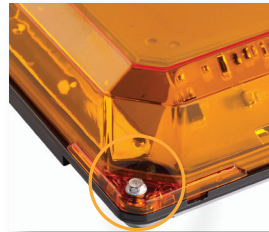
Amp Draw	Max: 4A (total amp draw depends on flash pattern used)
Flash Rate	Various
LED Count	26
LED Color Options	Amber
Lens Color Options	Amber and Clear

Physical Specifications

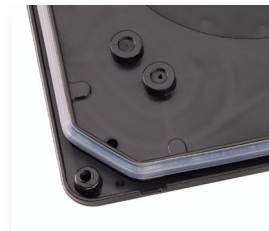
	Height	Length	Width
Permanent mount	2.7 in (6.6 cm)	15.3 in (38.8 cm)	8.4 in (21.3 cm)
Magnetic mount	3.0 in (7.6 cm)	15.3 in (38.8 cm)	8.4 in (21.3 cm)
Suction-cup mount	3.0 in (7.6 cm)	15.3 in (38.8 cm)	8.4 in (21.3 cm)

Ship Weight

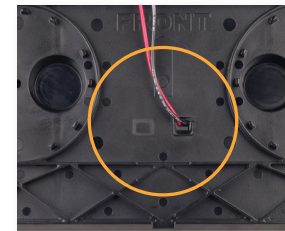
Permanent mount	3.4 lbs (1.5 kg)
Magnetic mount	4.5 lbs (2.0 kg)
Suction-cup mount	6.0 lbs (2.7 kg)



For ease of service while on the vehicle, the dome can be removed from the base by simply removing (4) screws and lifting the dome in from one of the notches in the base.



A wiper gasket blade improves the seal of the dome.



On the bottom of the base, are two knock-outs with a strain-relief for power and ground or for additional wiring.



HighLighter, Solaris, MagnetSelect, and Reliable Onboard Circuitry are trademarks of Federal Signal Corporation.

©2018 Federal Signal Corporation. M1501 | 718