

**INSTRUCTION SHEET  
FOR  
MODEL AHRK-F  
AEROHAWK ROTATOR KIT**

**SAFETY MESSAGE TO INSTALLERS**

People's lives depend on your safe installation of our products. It is important to read, understand and follow all instructions shipped with this product. In addition, listed below are some other important safety instructions and precautions you should follow:

- To properly install this kit: you must have a good understanding of automotive electrical procedures and systems, along with proficiency in the installation and use of safety warning equipment.
- When drilling into light structure, ensure that all wires are clear of area.
- Remove all burrs from drilled holes.

Failure to follow all safety precautions and instructions may result in property damage, serious injury, or death to you or others.

**A. GENERAL.**

The Model AHRK-F Rotator Kit supplies all the parts necessary to allow the installation of a motor driven rotating light assembly, with 55-watt halogen lamp, in a Federal AeroDync light bar.

After unpacking the Model AHRK-F, carefully check all envelopes, shipping labels and tags before removing or destroying them. Ensure that the parts listed in the KIT CONTENTS LIST are contained in the packing carton.

**B. KIT CONTENTS LIST.**

Qty.	Description	Part No.
1	Rotating Light Assy.	8542534
3	#10 Hex Hd. Thd. Frm. Screw	7011A135-10
1	#10 Hex Hd. Thd. Frm. Screw	7011A122-06
1	#8 Hex Hd Thd. Frm Screw	7011A103-06
2	Lockwasher, #10 Int. Tooth	7075A014
3	#10 Flat Washer	7072A020
3	Grommet, Rubber	8108A014
3	Bushing	8559A088
1	Wire Tie	150A109

**C. INSTALLATION.**

**CAUTION**

To avoid damage from electrical shorts, disconnect power to light bar before proceeding.

1. Remove the two screws located at the identification plate of each dome assembly. Save all screws. Slide both dome assemblies out of the extrusion.
2. Position the rotator assembly at the desired location on the extrusion.
3. Locate a suitable 12VDC source. This may be a terminal block near mounting location or an unused wire in the light bar's wiring harness.
4. See figures 1 and 2. If the extrusion is the type with mounting slots, no drilling is necessary. Proceed to step 7.
5. Using the rotator assembly as a template, scribe three drill position marks on the extrusion mounting rail as shown in figure 2.

**CAUTION**

Avoid damage to wire and/or electrical shorts. Ensure that all electrical wiring is clear of drilling area. Remove all metal fragments after drilling.

6. Using a #26 drill bit, drill 9/16" deep holes at the previously scribed drill position marks as shown in figure 2.

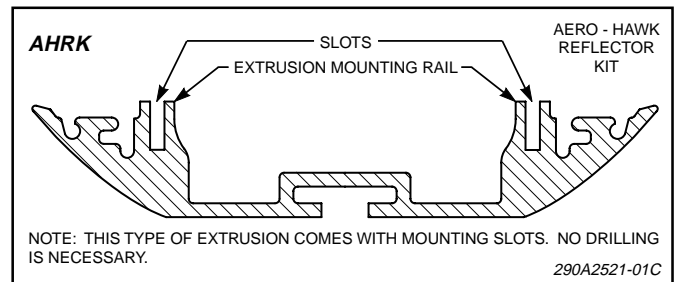


Figure 1.

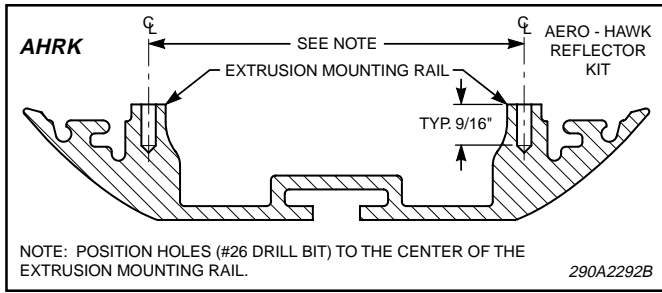


Figure 2.

7. Secure the rotator assembly to the extrusion with three #10 hex hd. thd. form. screws, #10 flat washers, rubber grommets, and bushings as shown in figure 3.

8. See figure 3. Connect the female terminal on red and black wires of rotator assembly to suitable 12VDC source. Properly ground the black motor wire with the ring terminal to the extrusion.

9. Install the reflector and gear assembly on the rotator assembly in the position shown in figure 3.

**CAUTION**

Interference with a rotating reflector can damage the reflector or wires. Ensure that wires are dressed to prevent any interference.

10. Dress wires with wire tie.

**CAUTION**

Service life of lamp will be shortened if glass portion is touched. If glass has been handled, clean carefully with a grease solvent.

**WARNING**

Halogen lamps are pressurized and if broken can result in flying glass. Always wear gloves and eye protection when handling the lamps.

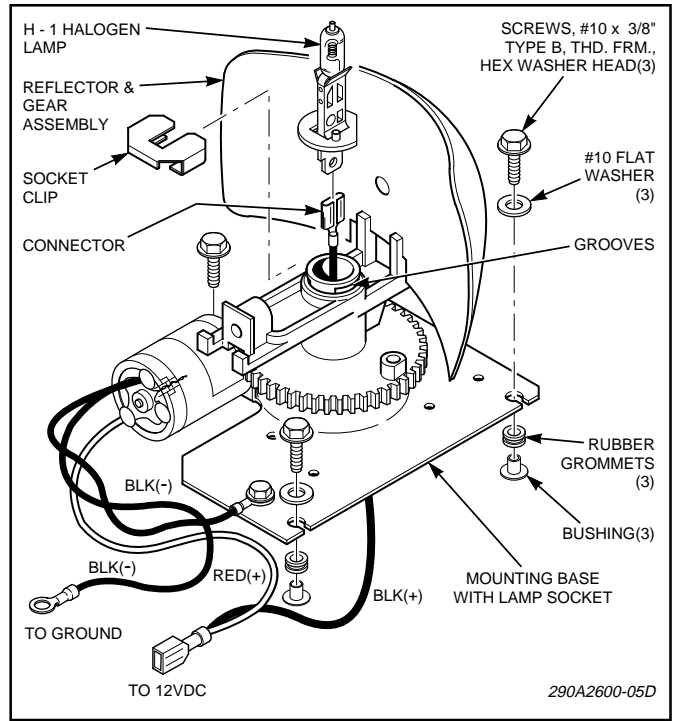


Figure 3.

11. See figure 3. Install the new H-1 halogen lamp. When installing, ensure that the lamp is secured to the connector and that the clip is properly seated in the grooves on the lamp socket.

12. Replace both dome assemblies and secure with the previously removed screws.