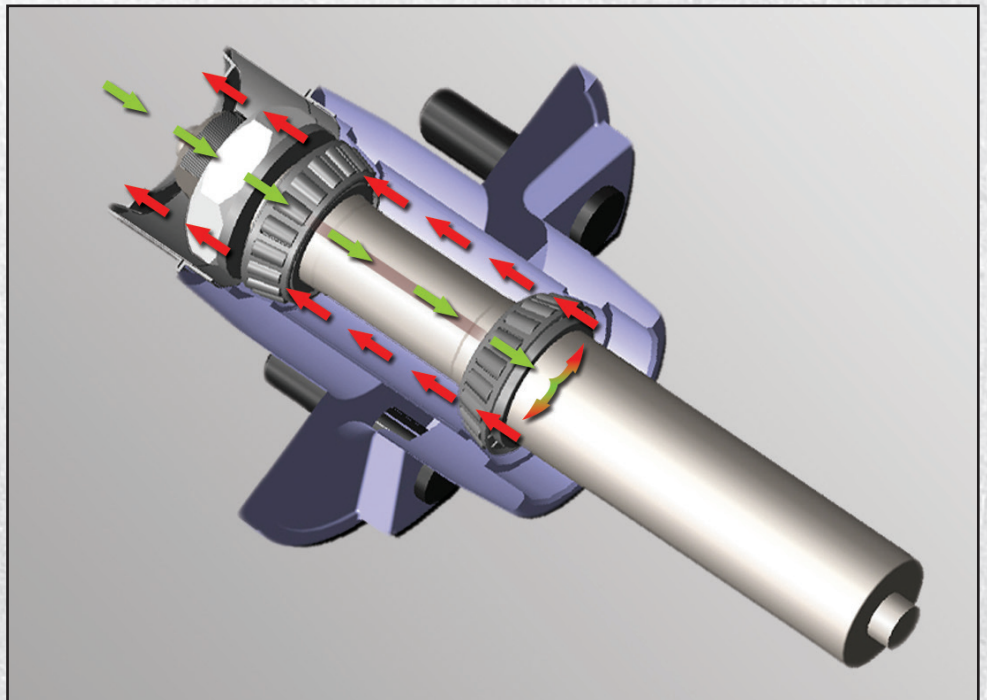


# All New Speed Lube™ Spindle Dolly

New From  
**IN THE  
DITCH**

## SLS™ Speed Lube™ Spindle

The Speed Lube™ Spindle allows grease to enter the center of the spindle with a standard grease gun. It forces new grease into the spindle, pushing the old grease forward, then exiting the spindle. Without the mess, this completely repacks the bearing with new, clean grease.



Speed Lube™ Spindle is only available on SLS™ Speed® Dollies and SLS™ XD™ Dollies.

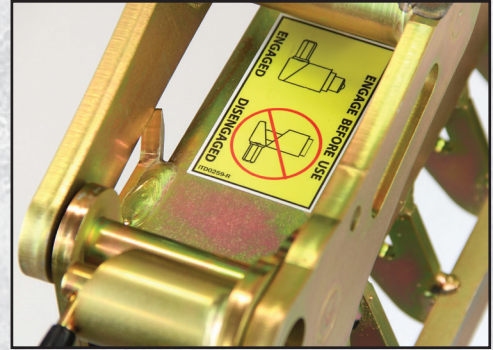
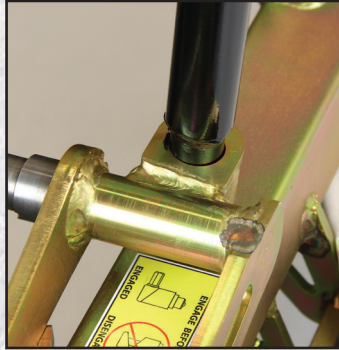
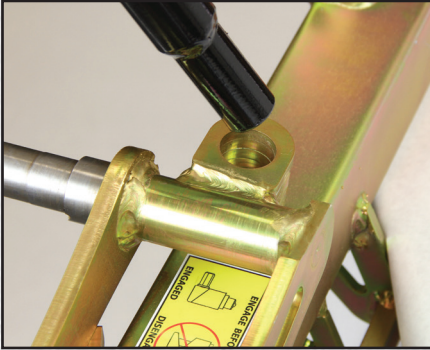


The white grease shown here is the old grease being completely forced out of the bearing.



# Breakover Bar Receiver Tube

The SLS™ Speed® Dolly features an all new fabricated break-over bar receiver tube. This innovation feature has a round hole and laser cut reinforced shoulders that allow the break-over bar to insert easily and safely into the receiver tube. Gone are the days of trying to fit a round peg into a square hole.



## Cam Lock

The SLS™ Speed® Dolly Cam Lock secures the wheels in place so there is no unwanted movement during transport or storage.

## Billet Handle

The SLS™ Speed® Dolly features a large billet handle for a comfortable grip and ease of transport.


## Paint Stop

The SLS™ Speed® Dolly features a tab that stops the dolly arm from damaging paint when rotating the wheels around the dolly frame. This protects the dolly's finish from scratching or scuffing that might otherwise lead to rust.



# SLS™ XD™ DOLLY

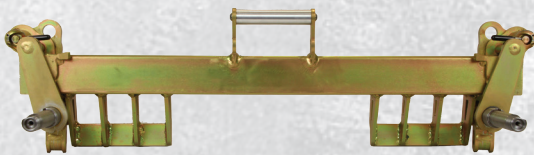
**ITD2490SLS-XD**

- **4,000 lb. Carrying Capacity** 
- **5.70 x 8 Load Range C Tires**
- **Lightweight, Patented Design**
- **Aluminum Billet Easy Carry Handle**
- **Dependable and Easy to Use**
- **Made In The USA**
- **Available in Tuff Coat Black or Yellow Chromate Zinc Finish**
- **The Only Dolly with a Speed Lube Spindle**



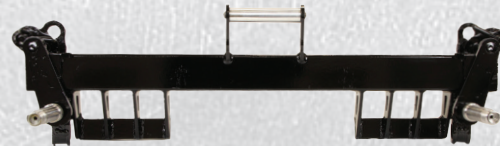
The Toughest just got tougher, The **XD “eXtreme Duty” Dolly** is now available with the **SLS “Speed Lube Spindle”**. We have taken the world most Extreme Duty Dolly and made it more Extreme, More Reliable, and More Serviceable. The new **SLS-XD Dolly** by In The Ditch is one Tough Dolly, designed for the most Extreme applications. With a true 4,000lb D.O.T Approved load rating. The XD Dolly is the world’s strongest and most trusted dolly. The **SLS XD Dolly** comes with the **SLS “Speed Lube Spindle”**. With the SLS, Maintenance is as easy as pumping grease into the grease zerk in the end of the spindle. As you pump new grease in, old grease is forced out through the SLS Dust Cap, it’s that simple. The SLS-XD Dolly also received the In The Ditch Exclusive Fabricated Receiver for the Soft Grip Break Over Bar. This fabricated design not only increased the strength of the receiver it reduced the weight of the Dolly. When Ordered as a Complete Set the SLS-XD Dolly comes with the ITD **“Positive Camber” Telescoping Aluminum Axles**. The **SLS XD Dolly** comes with The In The Ditch Exclusive 5:70x 8 Aluminum Alloy wheel that is the only wheel in the world with a D.O.T rating of 1,000lbs and a true 100 PSI air pressure rating. The XD-SLS Dolly comes with Carlisle USA Made 5:70 x 8 tires each has a load rating of 1070lbs at 100 PSI. The SLS-XD Dolly is available in Tuff Coat Black Finish or Zinc Plated. When it comes to ease of use, ease of maintenance and reliability day in and day out, nothing compares to the XD-SLS Dolly by In The Ditch. Like all of the products at In The Ditch. The SLS- Dolly comes with a 30 day money back guarantee and has a warranty that’s backed by the entire crew at In The Ditch.

## SLS™ XD™ DOLLY OPTIONS



### ZINC PLATED FRAME

- We dip the whole frame in a zinc solution and electrostatically charge the dolly frame causing the zinc to bond to the metal
- The zinc plating process offers a great finish that is very durable and can even be painted



### TUFF COAT BLACK FINISH FRAME

- Six Step Process as shown on page 59
- Durable Black Finish with UV inhibitors
- Can easily be touched up



### TELESCOPING ALUMINUM “POSITIVE CAMBER” AXLE ITD1401

- Huck Riveted Axle Caps
- Robotically welded
- 4 Adjustment Holes for a wide range of vehicles
- Designed for today’s SUVs and Crossovers
- Stainless Steel Rounded Plunger Pin won’t pinch fingers and is easily replaced
- Increased Camber with Fabricated Wedge Design -See PG# 47 of Camber Axles
- Must use Two Axles to Tow
- Width Collapsed: 58 1/2” O.D.
- Width Extended: 82 1/2” O.D.
- 4,000 lb Rating Per Set
- Weight: 21.5 lbs.

**WARNING: POSITIVE CAMBER AXLE CANNOT BE USED WITH STANDARD AXLE  
- MUST USE POSITIVE CAMBER AXLES AS A SET**



### POLISHED ALUMINUM WHEEL

- 10 Year Warranty against bending or breaking
- Designed by ITD to be lightweight, good looking and strong
- D.O.T. Compliant
- 1,000 lb Rating that meets all SAE Standards and is rated for 100 PSI
- Durable finish that cleans up with just soap and water
- Chrome Bolt-In 100 PSI Valve Stem


## SLS™ XD™ DOLLY

**ALUMINUM  
WHEELS**

**TUFF COAT  
BLACK**



### ITD2490**SLS**

-  Dolly Set has a 4,000 lb load rating.  
Tuff Coat Black SLS-XD Dolly Kit: (2) SLS-XD Dolly Frames in Tuff Coat Black Finish, Aluminum Wheels with 5:70 x 8" Tires. (2) Telescoping Aluminum "Positive Camber" Axles. (1) Soft Grip Breakover Bar (2) Ratchet Straps (1) Operation's Manual

Set Weight: 174 lbs.




## SLS™ XD™ DOLLY

**ALUMINUM  
WHEELS**

**ZINC  
PLATED**



### ITD2490**SLSP**

-  Dolly Set has a 4,000 lb load rating.  
XD Plated Yellow Chromate  
(2) SLS-XD Dolly Frames in Yellow Chromate Finish, Aluminum Wheels with 5:70 x 8" Tires.  
(2) Telescoping Aluminum "Positive Camber" Axles.  
(1) Soft Grip Breakover Bar  
(2) Ratchet Straps  
(1) Operation's Manual

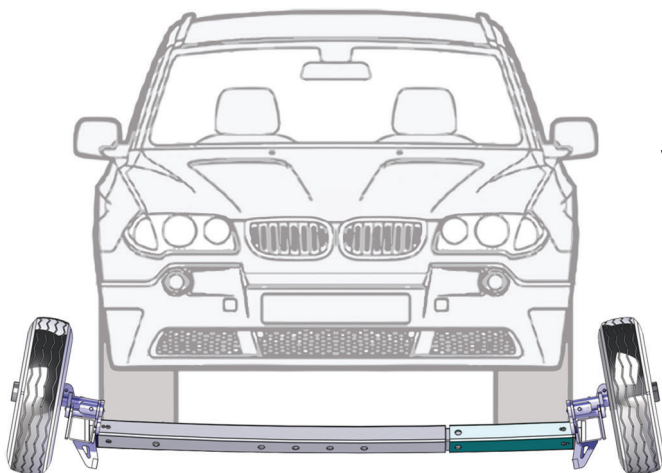
Set Weight: 174 lbs.





# THINK POSITIVE

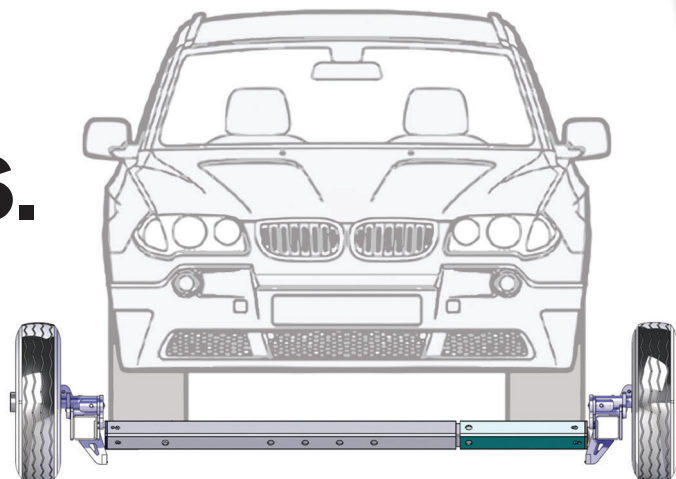
## STANDARD AXLE



**WITHOUT**  
POSITIVE CAMBER AXLES

VS.

## POSITIVE CAMBER AXLE



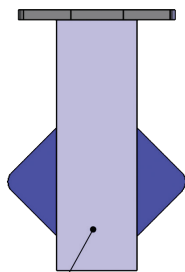
**WITH**  
POSITIVE CAMBER AXLES

**TECH  
TIP**

HOW TO TELL THE DIFFERENCE BETWEEN THE **IN THE DITCH**  
STANDARD AXLE AND OUR NEW POSITIVE CAMBER AXLE

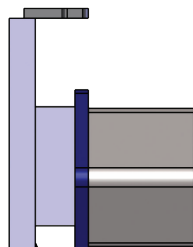
**ITD1400**

**STANDARD AXLE  
PROFILE**



Solid Face

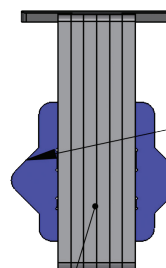
**STANDARD AXLE  
CAP PROFILE**



Surfaces Parallel

**ITD1401**

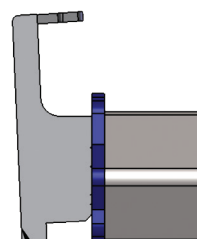
**POSITIVE CAMBER  
AXLE PROFILE**



Additional Flange

Laminated Face

**POSITIVE CAMBER  
CAP PROFILE**



Surfaces have 3 Degrees  
of Separation