

CS6/8 SERIES

CLUTCH SHIFT POWER TAKE-OFF



DESIGNED FOR VERSATILITY

Designed to work on Allison 1000 and 2000 series automatics and many other current manual transmissions, the CS6/8 Series power take-offs offer direct mount pump options and a drag brake. Upgrading to a multi-disk clutch brake allows for absolute shaft stoppage.



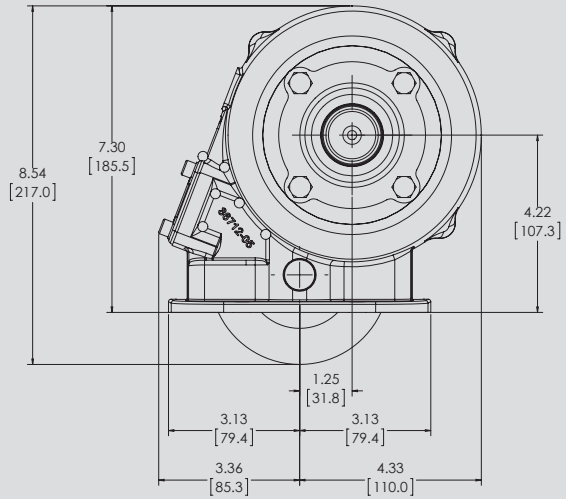
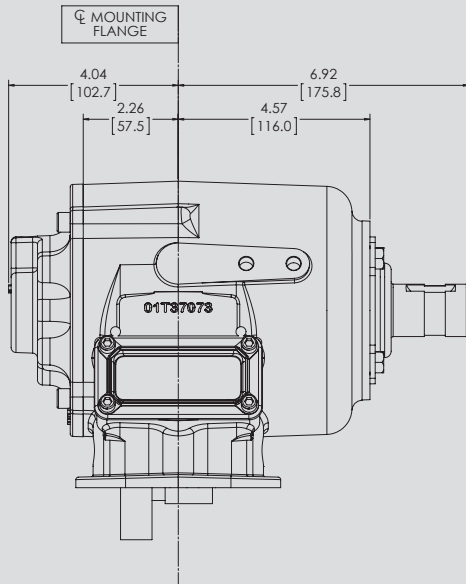
KEY FEATURES

- 23 transmission input gears: Fits most popular automatic and manual transmissions
- Three remote mount output shafts in keyed and flange types: Versatility for remote pump drives
- S.A.E. "A", "B", and "BB"; DIN 5462 direct mount pump options: Fits most popular pumps
- Rotatable direct mount flanges: Allows pump to be positioned for maximum clearance
- Muncie drag brake prevents shaft rotation in the "OFF" mode
- Optional pulse generator: Lets System Protection Device monitor PTO shaft speed

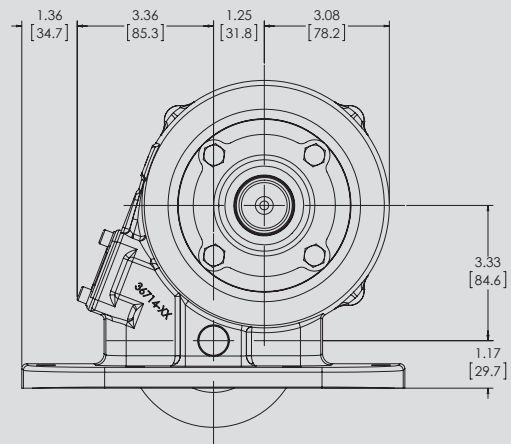
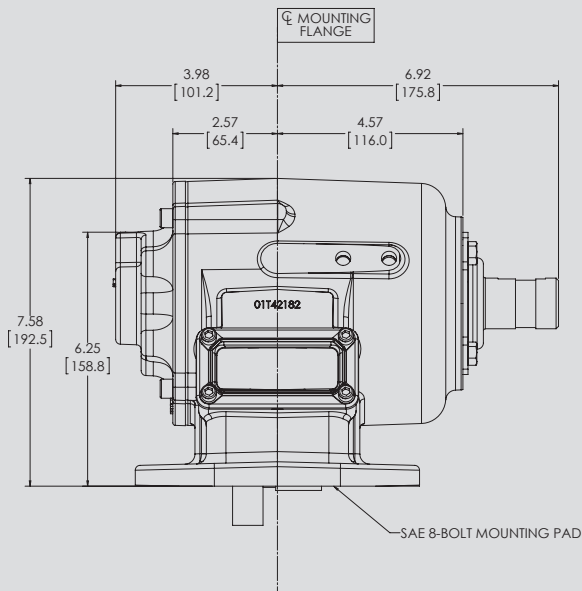
PTO TORQUE & HORSEPOWER RATINGS

SPEED RATIO	INTERMITTENT HP@1000 RPM	INTERMITTENT TORQUE LBS.FT.	CONTINUOUS TORQUE LBS.FT.	INTERMITTENT [KW]@1000 RPM	INTERMITTENT TORQUE [NM]	CONTINUOUS TORQUE [NM]
03	57	300	210	[43]	[407]	[285]
04	57	300	210	[43]	[407]	[285]
05	57	300	210	[43]	[407]	[285]
06	57	300	210	[43]	[407]	[285]
07	57	300	210	[43]	[407]	[285]
09	52	275	193	[39]	[373]	[261]
12	52	275	193	[39]	[373]	[261]
14	52	275	193	[39]	[373]	[261]

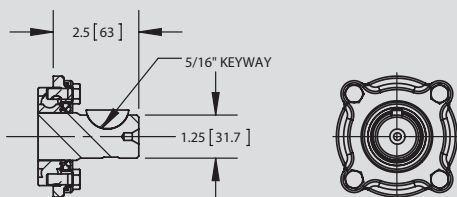
CS6 DIMENSIONS



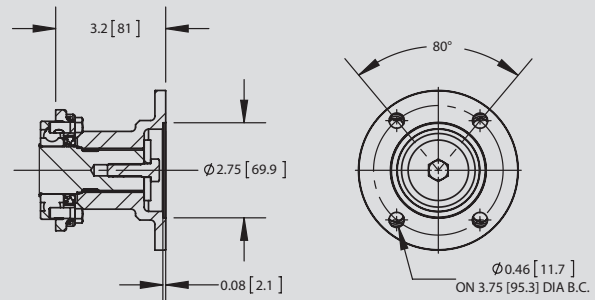
CS8 DIMENSIONS



OUTPUT OPTIONS

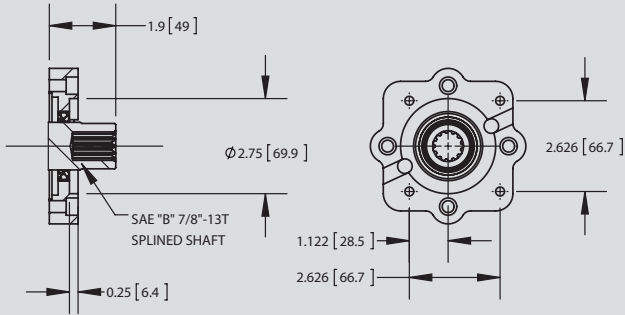


"B" OUTPUT - 1.25" RD SHAFT W/ 5/16" KEY

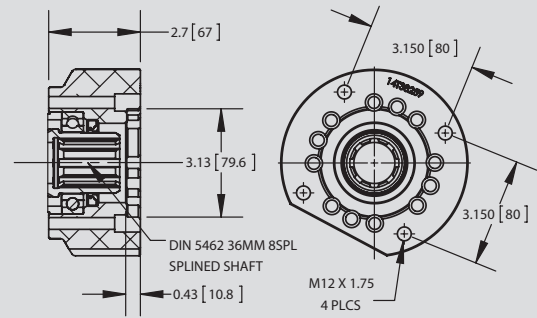


"C" OUTPUT - 1410 COMP FLANGE

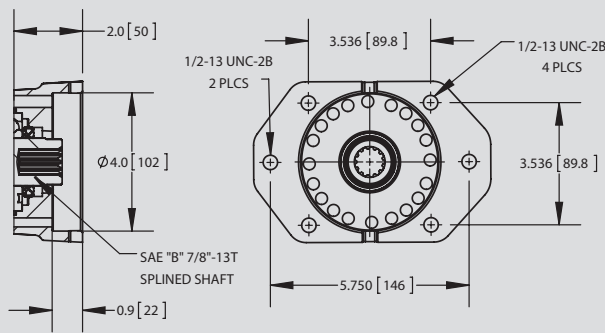
OUTPUT OPTIONS (CONT)



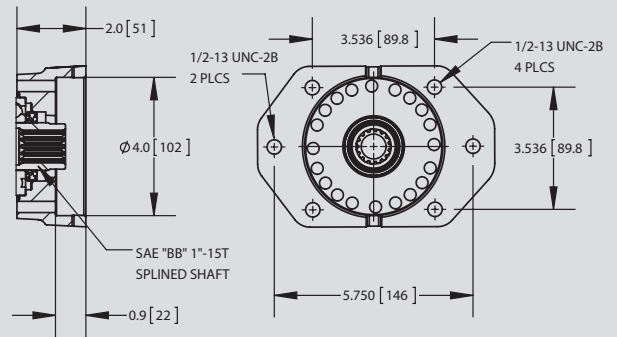
"G" OUTPUT - SPECIAL 4 BOLT DANA MOUNT FLANGE



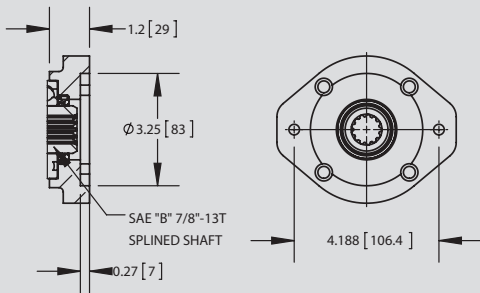
"I" OUTPUT - DIN 5462



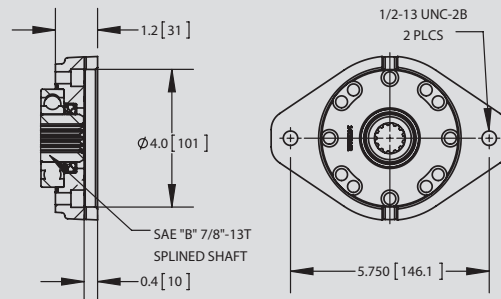
"K" OUTPUT - SAE "B" 2/4 BOLT



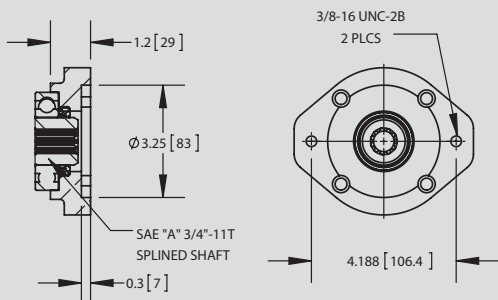
"P" OUTPUT - SAE "B" 2/4 BOLT FLANGE
SAE "BB" 1"-15T SPLINED SHAFT



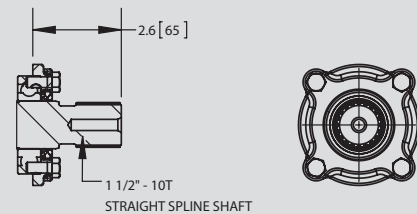
"Q" OUTPUT - SAE "A" 2 BOLT FLANGE
SAE "B" 7/8"-13T SPLINED SHAFT



"S" OUTPUT - SAE "B" 2 BOLT

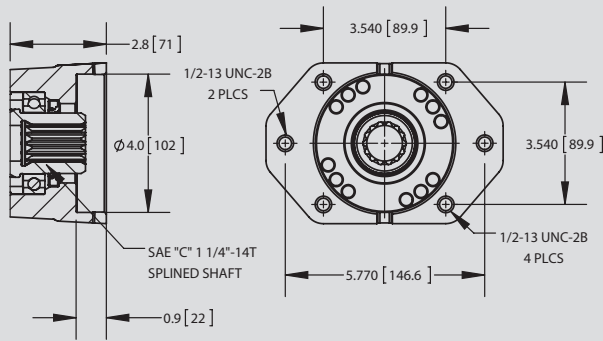


"T" OUTPUT - SAE "A" 2 BOLT FLANGE
SAE "A" 3/4"-11T SPLINED SHAFT

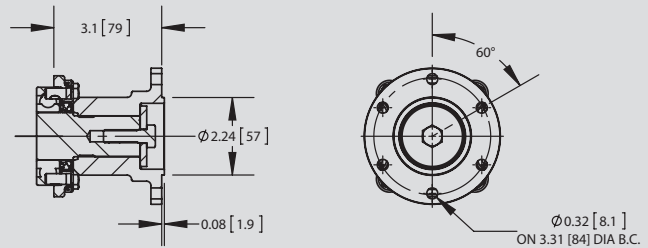


"X" OUTPUT - 1 1/2"-10T SHAFT
FOR COMP FLANGE

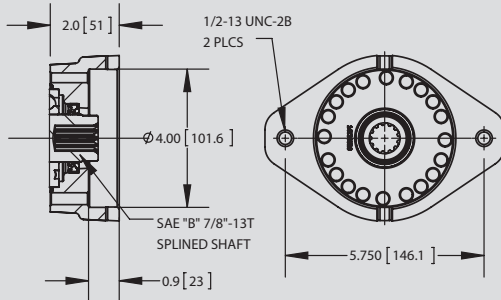
OUTPUT OPTIONS (CONT)



"Z" OUTPUT - SAE "B" 2/4 BOLT FLANGE
SAE "C" 1 1/4"-14T SHAFT



"2" OUTPUT - DIN 100 COMP FLANGE



"6" OUTPUT - SAE "B" 2 BOLT SPECIAL

MODEL NUMBER CONSTRUCTION

CS-6S-M65-07 E-1-B-X

PTO Type

Clutch Shift (Standard Drag Brake) CS
Clutch Shift (Optional Shaft Brake) CB

Mounting

SAE 6-Bolt Std. Mtg. -6S
SAE 6-Bolt Non-Std. Mtg. -6D
SAE 6-Bolt Non-Std. Mtg. Deep -6N
SAE 6-Bolt Std. Mtg. Metric -6M
SAE 6-Bolt Non-Std. Mtg. Metric -6C
SAE 8-Bolt Std. Mtg. -8S
SAE 8-Bolt Std. Mtg. Metric -8M
SAE 8-Bolt Non-Std. Mtg. -8D
SAE 8-Bolt Non-Std. Mtg. Metric -8S

Transmission (Input Gear Options)

Aisin -I84	Fuller -F84
Aisin -I85	Fuller -F85
Allison -A68	Fuller -F86
Allison -A69	Mack -M65
Clark/Fuller -C61	Mercedes -M83
Clark/Fuller -C70	Spicer -S73
Fuller -F10	Spicer -S71
Fuller -F11	Spicer -S60
Fuller -F61	Spicer -S70
Fuller -F63	Universal -S68
Fuller -F66	Universal -U60
Fuller -F70	Universal -U68

Speed Ratio*

03 - 0.33:1	07 - 0.70:1
04 - 0.44:1	09 - 0.87:1
05 - 0.47:1	12 - 1.15:1
06 - 0.56:1	14 - 1.44:1 (8-bolt only)

*Not all combinations are available for input gear options. Refer to application catalog or service parts list for additional information.

Special Features

X - None
C - Pulse Generator / Press. Lube / SPD1001D
D - Pulse Generator & SPD1001D
P - Pressure Lube
R - Pulse Generator / No Prew S - Pulse Generator / Pressure Lube

Output Types

B - 1-1/4 Round 5/16 KW
C - 1410 Companion Flange
G - Special
I - DIN 5462
K - SAE "B" 2 & 4-bolt
L - Low-Box Only
P - SAE "B-B" 2 & 4-bolt
Q - SAE "A" 2-bolt
R - SAE "A" 2-bolt
S - SAE "B" 2-bolt
T - SAE "A" 2-bolt
Z - SAE "B" 2 & 4-bolt C Shaft
2 - DIN Companion Flange
6 - SAE "B" 2-bolt

Assembly Arrangement

1, 2, 3, or 4 (See Below)

Shifter Type

A - Manual Air
E - Electric/Air 12v
F - Electric/Air 24v
H - Electric/Hyd 12v
J - Electric/Hyd 24v

