

PRODUCT GUIDE

POWER TAKE-OFFS AND
HYDRAULIC COMPONENTS



A MEMBER OF



TABLE OF CONTENTS

Introduction

- 2 Interpump Group
- 3 Muncie Power Products | Interpump Hydraulics | Interpump Fluid Solutions

Power Take-offs by Transmission

- 6 Aisin
- 7 Allison
- 11 Detroit Diesel
- 12 Eaton/Fuller
- 16 Ford
- 18 Mack
- 23 PACCAR
- 27 Volvo
- 29 ZF
- 31 Split Shaft
- 32 Engine Mount
- 33 Engine Flywheel

Hydraulic Pumps

- 34 Gear Pumps SAE
- 36 Optimum Gear Pumps | Motors
- 37 Gear Pumps DIN
- 38 Dump & Hoist Pumps
- 38 Refuse Pumps
- 39 Vane Pumps
- 40 Fixed Displacement Piston Pumps
- 42 Variable Displacement Piston Pumps
- 43 Piston Motors
- 44 Low Speed High Torque Motors
- 45 Clutch Pumps

Cylinders

- 46 Single-acting Telescopic Cylinders
- 47 Double-acting Telescopic Cylinders

Valves & Accessories

- 48 Directional Control Valves
- 49 Load Sense Valves
- 50 Tipper Valves
- 51 Accessory Valves

Reservoirs | Filters

- 52 Upright
- 53 Side Mount
- 53 Saddle Mount
- 54 Under Chassis
- 55 Return Line | Tank-top Return Line | High Pressure

Wet Line Kits

- 56 Dump Pump Wet Line Kits
- 57 Tipper Valve Wet Line Kits

Fluid Conveyance

- 58 Braided Hose
- 59 Braided Fittings
- 60 Spiral Hose
- 61 Spiral Fittings
- 62 Inlet/Suction Hose
- 63 Specialty & Application Hose
- 63 Other Product Offerings

Consoles & Controls

- 64 Consoles | Pneumatic Controls | Cable Controls

Technology Solutions

- 66 Electronic Spreader Systems
- 67 Hydraulic Indicator Display & Switches
- 67 Muncie Start[®]
- 67 SPD-2000 System Protection Device
- 67 DC Power Packs

Customer Resources & Locations

- 68 Service | Quality | Innovation
- 69 M-Power | Training | Useful Formulas
- 70 Locations

Specifications are subject to change without notice. Visit www.munciepower.com for warranties and literature. All rights reserved. © Muncie Power Products, Inc. (2015)



INTERPUMP GROUP

Muncie Power Products is a proud member of the Interpump Group—an Italian based, multinational organization—that consists of 115 companies in 34 countries, with an impact spanning across the world. Interpump Group is known for being the world’s largest producer of professional high-pressure piston pumps as well as the largest manufacturer of power take-offs. Interpump Group is also one of the largest international players in the water-jetting, flow handling, hydraulics, and power transmission markets.

Muncie Power joined Interpump Group in 1999. This partnership and continued growth of the Interpump Group has helped develop Muncie Power into one of the leading providers of PTOs and fluid power products across North America.

North American Hydraulic & Power Transmission Products

Interpump Group continues to grow its footprint in North America through new acquisitions and empowering sustainable brands. In North America, six companies make Interpump Group a leader in the North American PTO, hydraulic, and power transmission markets. These organizations include American Mobile Power, Hydra Dyne Tech, Muncie Power, RR USA, Walvoil, and White Drive Motors & Steering. Together, these companies provide a wide breadth of high-quality solutions for several industries across North America.





Muncie[®] Power Products

Headquartered in Muncie, Indiana, Muncie Power Products is a leading manufacturer of power take-offs and provider of fluid power products for North America. As a member of the Interpump Group, Muncie Power has the ability to provide nearly every major component in a hydraulic system with the quality and reliability our customers have come to depend on.

Since 1935, Muncie Power has taken pride in providing unparalleled customer service to each and every customer. Customers who come to Muncie Power understand that we put people first—ours and yours.

The vehicles our products power are critical to the communities we live and work in, and we understand how vital it is that our products work when you need them to. Our continuous investment in our people allows us to maintain our high quality standards as well as invest in new product innovations to make our products more effective, easier to install, and last longer.



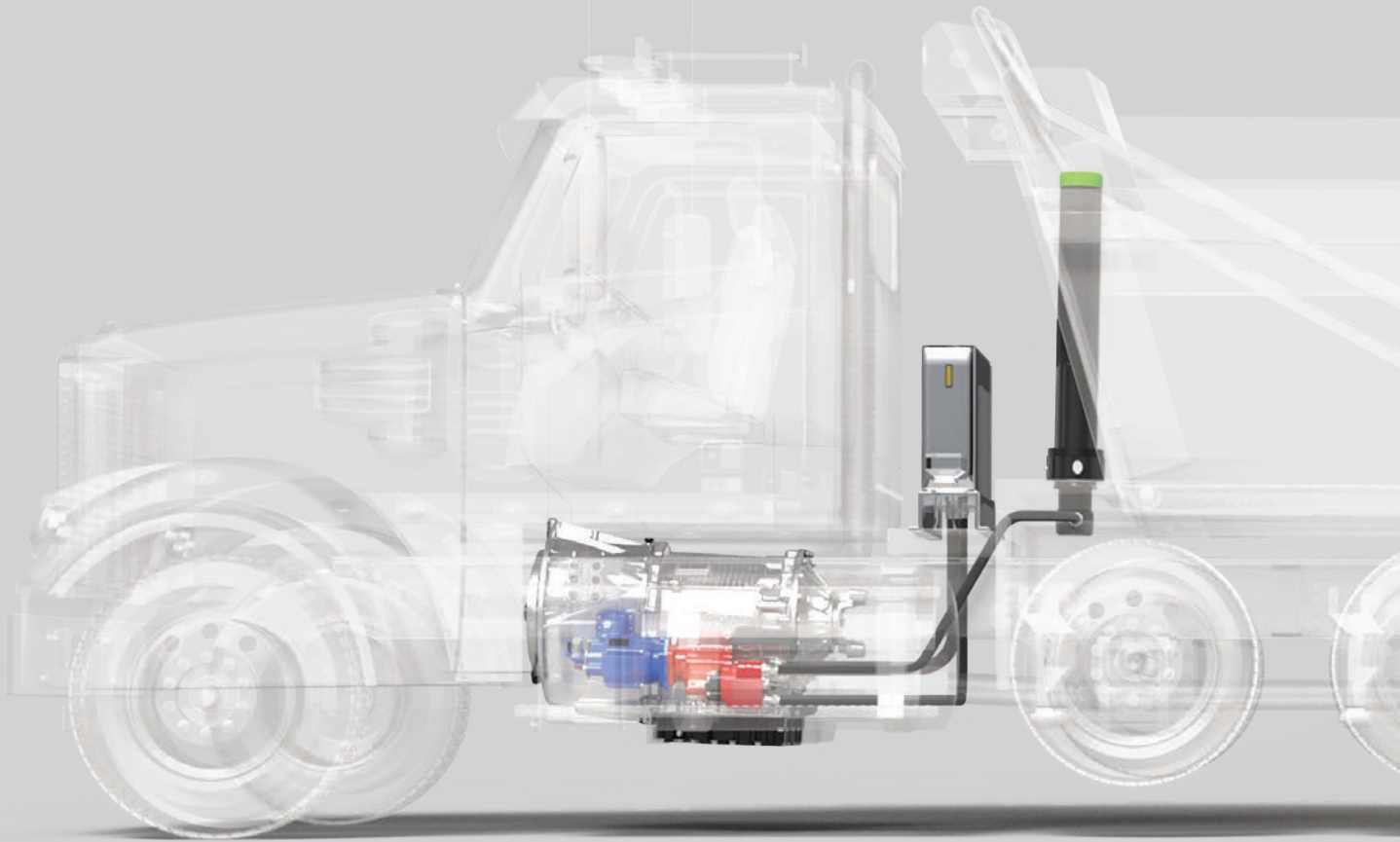
Muncie Power is the sole provider of Interpump Hydraulics in North America. Located in Europe, Interpump Hydraulics is the combination of multiple well-known manufacturers with decades of experience in the work truck industry working together. Through this partnership, Muncie Power is able to expand its PTO and hydraulics offerings while maintaining the high level of quality you trust.



Muncie Power is the only provider of Interpump Fluid Solutions in North America. Located in Europe, Interpump Fluid Solutions is made up of multiple manufacturers who form one of the leading providers of hose, fittings, machines, and accessories across the world. With more than 30 years of manufacturing experience, Interpump Fluid Solutions is a trusted producer of high-quality fluid conveyance solutions that are engineered and tested to work together.

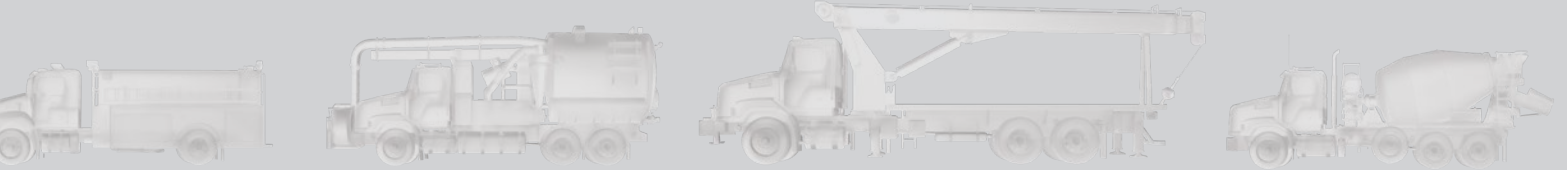


HYDRAULIC SYSTEMS



PTO SOLUTIONS FOR ALL POPULAR TRANSMISSIONS





POWER TAKE-OFFS

AISIN TRANSMISSIONS

CLUTCH SHIFT

MUNCIE POWER PRODUCTS

FA6B-I84



- 6-bolt clutch shift PTO
- Angular housing moves the clutch-shifted output below chassis obstructions for either driveshaft applications or direct mount pumps
- Advanced gear design provides reduced noise

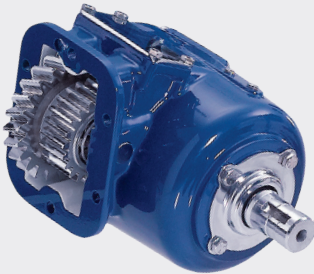
MAX. TORQUE INTERMITTENT:	124 lbs.ft. (168 Nm)*
-------------------------------------	-----------------------

MAX. HP (@ 1,000 RPM) INTERMITTENT:	24 HP (18 kW)*
---	----------------

APPROX. WEIGHT	34 lbs. (15.4 Kg.)
-----------------------	--------------------

MUNCIE POWER PRODUCTS

CS6B-I84



- 6-bolt clutch shift PTO with patented drag brake
- Rotatable direct-mount flanges allow the pump to be positioned for maximum clearance

MAX. TORQUE INTERMITTENT:	250 lbs.ft. (339 Nm)*
-------------------------------------	-----------------------

MAX. HP (@ 1,000 RPM) INTERMITTENT:	48 HP (36 kW)*
---	----------------

APPROX. WEIGHT	47 lbs. (21.3 Kg.)
-----------------------	--------------------

Gear adapters available to create space, change the PTO output shaft's rotation, or relocate the output shaft.

** PTOs are derated to match transmission ratings.*

ALLISON TRANSMISSIONS

1000 & 2000 SERIES

MECHANICAL SHIFT

MUNCIE POWER PRODUCTS
TG6B-A69

- Versatile 6-bolt mechanical shift PTO
- Lightweight, reduced noise, and superior heat dissipation

MAX. TORQUE
INTERMITTENT: 250 lbs.ft. (339 Nm)*

MAX. HP (@ 1,000 RPM)
INTERMITTENT: 48 HP (36 kW)*

APPROX. WEIGHT 22 lbs. (10 Kg.)

Gear adapters available to create space, change the PTO output shaft's rotation, or relocate the output shaft.



CLUTCH SHIFT

MUNCIE POWER PRODUCTS
CS6B-A67

- 6-bolt clutch shift PTO with patented drag brake
- Direct-mount flanges with ability to rotate allow the pump to be positioned for maximum clearance
- Gear box available for PTO speed reduction (Use CSGB 200-125)

MAX. TORQUE
INTERMITTENT: 300 lbs.ft. (407 Nm)*

MAX. HP (@ 1,000 RPM)
INTERMITTENT: 57 HP (43 kW)*

APPROX. WEIGHT 47 lbs. (21.3 Kg.)

Gear adapters available to create space, change the PTO output shaft's rotation, or relocate the output shaft.



** PTOs are derated to match transmission ratings.*

ALLISON TRANSMISSIONS

3000 & 4000 SERIES

CLUTCH SHIFT

MUNCIE POWER PRODUCTS A20-A10



- Medium-duty, 10-bolt clutch shift PTO
- A rotatable pump flange allows for 30 unique positions
- Increased clearance for easier installation
- Shift cover allowing 360-degree rotation
- Tapered roller bearings increasing PTO life

MAX. TORQUE
INTER./CONTINUOUS: 415 lbs.ft. (563 Nm)

MAX. HP (@ 1,000 RPM)
INTER./CONTINUOUS: 79 HP (59 kW)

APPROX. WEIGHT 47.2 lbs. (21.4 Kg.)

Muncie Start®: Shift Code SX (12 V Integral) or Shift Code SR (12 V Remote Mount)

(See page 67 for additional Muncie Start information.)

MUNCIE POWER PRODUCTS CS40-A10 OR CS41-A10



- Heavy-duty, 10-bolt clutch shift PTO
- Precision-ground gears allow for high-torque capacity with quiet operation
- Use CS40-A10 for 3700 Series

MAX. TORQUE
INTERMITTENT: 600 lbs.ft. (813 Nm)*

MAX. HP (@ 1,000 RPM)
INTERMITTENT: 115 HP (85 kW)*

APPROX. WEIGHT 69 lbs. (31.3 Kg.)

Muncie Start®: Special Feature Option 6 (Stationary or Mobile)

(See page 67 for additional Muncie Start information.)

MUNCIE POWER PRODUCTS CS10-A10 OR CS11-A10



- Heavy-duty, 10-bolt clutch shift PTO
- Versatility for both remote and direct mount pumps with rotatable direct mount flanges

MAX. TORQUE
INTERMITTENT: 500 lbs.ft. (678 Nm)

MAX. HP (@ 1,000 RPM)
INTERMITTENT: 95 HP (71 kW)

APPROX. WEIGHT 68 lbs. (30.9 Kg.)

** PTOs are derated to match transmission ratings.*

CONSTANT DRIVE

MUNCIE POWER PRODUCTS
A30-A10

- Medium-duty, 10-bolt constant drive/continuous duty PTO
- New rotatable pump flange allows for 30 unique positions
- Single continuous/intermittent torque rating

MAX. TORQUE	
INTER./CONTINUOUS:	415 lbs.ft. (563 Nm)
MAX. HP (@ 1,000 RPM)	
INTER./CONTINUOUS:	79 HP (59 kW)
APPROX. WEIGHT	38 lbs. (17.2 Kg.)



MUNCIE POWER PRODUCTS
EX DRIVE

- Designed for the Allison 3000 and 4000 Series transmissions with a cooler or retarder allowing for larger gear or piston pumps to be direct mounted
- The EX Drive can be paired with the A20, A30, CS10/CS11 and CS40/CS41 Series PTOs
- Shaft extension models are available for both clutch shift and constant drive Muncie Power PTOs and are equipped with wet-spline couplings

MAX. TORQUE	
WITH A20:	
INTER./CONTINUOUS:	415 lbs.ft. (563 Nm)
WITH A30:	
INTER./CONTINUOUS:	415 lbs.ft. (563 Nm)
WITH CS10/CS11:	
INTER./CONTINUOUS:	500 lbs.ft. (678 Nm)
WITH CS40/CS41:	
INTER./CONTINUOUS:	484 lbs.ft. (656 Nm)
MAX. HP (@ 1,000 RPM)	
WITH A20:	77 HP (57 kW)
WITH A30:	77 HP (57 kW)
WITH CS10/CS11:	95 HP (71 kW)
WITH CS40/CS41:	92 HP (70 kW)
APPROX. WEIGHT	42 lbs. (19.05 Kg.)



ALLISON TRANSMISSIONS

5000, 6000, 8000, & 9000 SERIES

MECHANICAL SHIFT

MUNCIE POWER PRODUCTS
828S-U62



- Heavy-duty, 8-bolt mechanical shift PTO
- Cast-iron housing, lever or air shift, and optional single- or dual-pump mounts
- Designed for use with high-torque mechanical equipment

MAX. TORQUE
INTERMITTENT: 500 lbs.ft. (678 Nm)

MAX. HP (@ 1,000 RPM)
INTERMITTENT: 95 HP (71 kW)

APPROX. WEIGHT 85 lbs. (38.6 Kg.)

DETROIT DIESEL TRANSMISSIONS DT12

MECHANICAL SHIFT - REAR MOUNT

INTERPUMP HYDRAULICS

P89-D1*

- Designed to fit the Detroit DT12 Series transmission in Freightliner, or Western Star Class 8 Cascadia trucks
- M1, M2, and M3 ratios

MAX. TORQUE INTERMITTENT:	317 lbs.ft. (430 Nm)
MAX. HP (@ 1,000 RPM) INTERMITTENT:	60 HP (45 kW)
APPROX. WEIGHT	23 lbs. (10.4 Kg.)



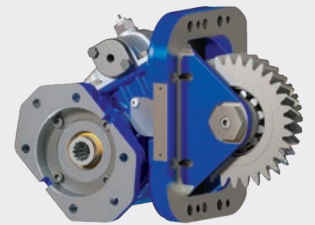
MECHANICAL SHIFT

MUNCIE POWER PRODUCTS

TG8S-U68

- Versatile 8-bolt mechanical shift PTO
- Lightweight, bottom-mount PTO
- Requires adapter gear for use with DT12 transmissions

MAX. TORQUE INTERMITTENT:	285 lbs.ft. (386 Nm)
MAX. HP (@ 1,000 RPM) INTERMITTENT:	54 HP (40 kW)
APPROX. WEIGHT	22 lbs. (10 Kg.)



MUNCIE POWER PRODUCTS

828S-U68

- Heavy-duty 8-bolt mechanical shift PTO
- High torque, bottom-mount PTO
- Requires adapter gear for use with DT12 transmissions

MAX. TORQUE INTERMITTENT:	500 lbs.ft. (678 Nm)
MAX. HP (@ 1,000 RPM) INTERMITTENT:	95 HP (71 kW)
APPROX. WEIGHT	85 lbs. (38.6 Kg.)



Note: Adapter gear part numbers for TG Series and 82 Series

40TA6479	DT12-OHE, DT12-OV
40TA6480	DT12-OVX

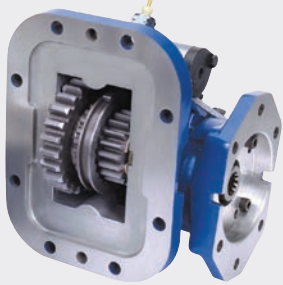
EATON/FULLER TRANSMISSIONS

ENDURANT HD (E80)/ENDURANT XD (E70)

MECHANICAL SHIFT

MUNCIE POWER PRODUCTS

TG8F-E80 OR TG8F-E70



- Versatile 8-bolt mechanical shift PTO
- Lightweight, reduced noise, and superior heat dissipation

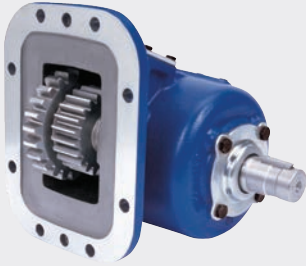
MAX. TORQUE
INTERMITTENT: 285 lbs.ft. (386 Nm)

MAX. HP (@ 1,000 RPM)
INTERMITTENT: 54 HP (40 kW)

APPROX. WEIGHT 22 lbs. (10 Kg.)

MUNCIE POWER PRODUCTS

SH8F-E80



- 8-bolt integral air shift PTO
- High torque capacity to meet demanding applications
- Fits most popular pump types
- Endurant 12-speed only

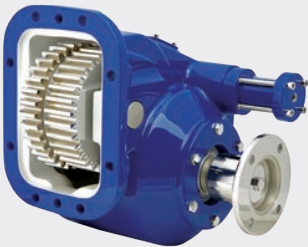
MAX. TORQUE
INTERMITTENT: 366 lbs.ft. (496 Nm)*

MAX. HP (@ 1,000 RPM)
INTERMITTENT: 70 HP (52 kW)*

APPROX. WEIGHT 35 lbs. (15.9 Kg.)

MUNCIE POWER PRODUCTS

828F-E80 OR 828F-E70



- Heavy-duty, 8-bolt mechanical shift PTO
- Cast-iron housing, lever or air shift, and optional single- or dual-pump mounts
- Designed for use with high-torque mechanical equipment

MAX. TORQUE
INTERMITTENT: 500 lbs.ft. (678 Nm)

MAX. HP (@ 1,000 RPM)
INTERMITTENT: 95 HP (71 kW)

APPROX. WEIGHT 85 lbs. (38.6 Kg.)

** PTOs are derated to match transmission ratings.*

ENDURANT HD (EHD)/ENDURANT XD (EXD)

MECHANICAL SHIFT – REAR MOUNT

INTERPUMP HYDRAULICS

P81-EHD OR P81-EXD

- Mechanically shifted through-shaft PTO
- Heavy-duty PTO for high-torque applications
- Driveline applications
- Includes adapter and stud kit

MAX. TORQUE	
INTERMITTENT:	442 lbs.ft. (599 Nm)
MAX. HP (@ 1,000 RPM)	
INTERMITTENT:	84 HP (62 kW)
APPROX. WEIGHT	9 lbs. (4.08 Kg.)



INTERPUMP HYDRAULICS

P82-EXD

- Mechanically shifted through-shaft PTO
- Driveline and direct mount pump applications
- DIN and SAE outputs
- Includes adapter and stud kit

MAX. TORQUE	
INTERMITTENT:	221 lbs.ft. (300 Nm)
MAX. HP (@ 1,000 RPM)	
INTERMITTENT:	42 HP (31 kW)
APPROX. WEIGHT	15 lbs. (6.8 Kg.)



INTERPUMP HYDRAULICS

P84-EHD or P84-EXD

- Mechanically shifted through-shaft PTO
- Driveline and direct mount pump applications
- DIN and SAE outputs
- Includes adapter and stud kit

MAX. TORQUE	
INTERMITTENT:	369 lbs.ft. (500 Nm)
MAX. HP (@ 1,000 RPM)	
INTERMITTENT:	70 HP (52 kW)
APPROX. WEIGHT	21 lbs. (9.53 Kg.)



INTERPUMP HYDRAULICS

P86-EXD

- Mechanically shifted through-shaft PTO
- Driveline and direct mount pump applications
- DIN and SAE outputs
- Includes adapter and stud kit

MAX. TORQUE	
INTERMITTENT:	369 lbs.ft. (500 Nm)
MAX. HP (@ 1,000 RPM)	
INTERMITTENT:	70 HP (52 kW)
APPROX. WEIGHT	26 lbs. (11.8 Kg.)



EATON/FULLER TRANSMISSIONS

ROADRANGER/ULTRASHIFT

MECHANICAL SHIFT

MUNCIE POWER PRODUCTS

8405A (Use 8405B for metric stud kit)



- 8-bolt PTO for Eaton transmissions
- Robust design provides a rigid structure for high vibration environments

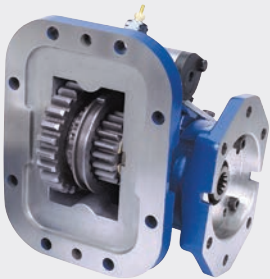
MAX. TORQUE	
INTERMITTENT:	230 lbs.ft. (312 Nm)

MAX. HP (@ 1,000 RPM)	
INTERMITTENT:	44 HP (33 kW)

APPROX. WEIGHT	35 lbs. (15.9 Kg.)
-----------------------	--------------------

MUNCIE POWER PRODUCTS

TG8B-U68 OR TG8S-U68



- Versatile 8-bolt mechanical shift PTO
- Lightweight, reduced noise, and superior heat dissipation

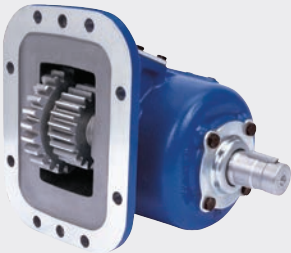
MAX. TORQUE	
INTERMITTENT:	285 lbs.ft. (386 Nm)

MAX. HP (@ 1,000 RPM)	
INTERMITTENT:	54 HP (40 kW)

APPROX. WEIGHT	22 lbs. (10 Kg.)
-----------------------	------------------

MUNCIE POWER PRODUCTS

SH8B-U68 OR SH8S-U68



- 8-bolt integral air shift PTO
- High torque capacity to meet demanding applications
- Fits most popular pump types
- U60 gear code may also be used

MAX. TORQUE	
INTERMITTENT:	400 lbs.ft. (542 Nm)

MAX. HP (@ 1,000 RPM)	
INTERMITTENT:	76 HP (57 kW)

APPROX. WEIGHT	35 lbs. (15.9 Kg.)
-----------------------	--------------------

MUNCIE POWER PRODUCTS

828B-U68 OR 828S-U68



- Heavy-duty, 8-bolt mechanical shift PTO
- Cast-iron housing, lever or air shift, and optional single- or dual-pump mounts
- Designed for use with high-torque mechanical equipment

MAX. TORQUE	
INTERMITTENT:	500 lbs.ft. (678 Nm)

MAX. HP (@ 1,000 RPM)	
INTERMITTENT:	95 HP (71 kW)

APPROX. WEIGHT	85 lbs. (38.6 Kg.)
-----------------------	--------------------

Note: U68 input gear can be replaced with S68 to obtain output speed 92% engine speed. Spacer and stud kit required.

ROADRANGER/ULTRASHIFT

CLUTCH SHIFT

MUNCIE POWER PRODUCTS

CS6B-U68 OR CS6S-U68

- 6-bolt clutch shift PTO with patented drag brake
- Direct-mount flanges with the ability to rotate allow the pump to be positioned for maximum clearance

MAX. TORQUE
INTERMITTENT: 300 lbs.ft. (407 Nm)*

MAX. HP (@ 1,000 RPM)
INTERMITTENT: 57 HP (43 kW)*

APPROX. WEIGHT 47 lbs. (21.3 Kg.)

Gear adapters available to create space, change the PTO output shaft's rotation, or relocate the output shaft.

MUNCIE POWER PRODUCTS

CS8B-U68 OR CS8S-U68

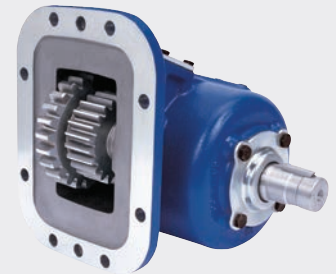
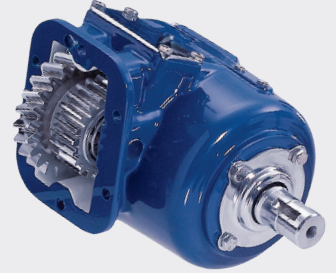
- 8-bolt clutch shift PTO with patented drag brake
- Direct-mount flanges with the ability to rotate allow the pump to be positioned for maximum clearance

MAX. TORQUE
INTERMITTENT: 300 lbs.ft. (407 Nm)*

MAX. HP (@ 1,000 RPM)
INTERMITTENT: 57 HP (43 kW)*

APPROX. WEIGHT 47 lbs. (21.3 Kg.)

*** PTOs are derated to match transmission ratings.**



FORD TRANSMISSIONS

TORQSHIFT® 6R140 6-SPEED

CLUTCH SHIFT

MUNCIE POWER PRODUCTS
FR6Q-F12

Rating shown is for stationary applications only.



- 6-bolt clutch shift PTO
- Fits Ford Super Duty trucks with Ford 6R140 transmissions, primarily F-350–F-550 (may also be used on F-650–F-750)
- Patented noise abatement mechanism eliminates virtually all gear rattle noise

MAX. TORQUE
INTERMITTENT: 200 lbs.ft. (271 Nm)

MAX. HP (@ 1,000 RPM)
INTERMITTENT: 39 HP (29 kW)

APPROX. WEIGHT 35 lbs. (15.9 Kg.)

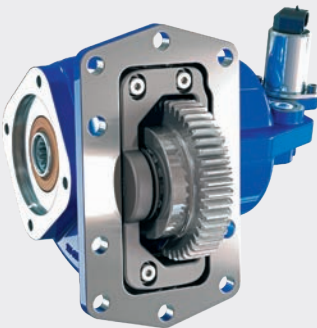
Muncie Start®: Special Feature Option 6 (Stationary OR Mobile) or Special Feature Option 7 (Stationary AND Mobile, only available on 6, F, and D shift options)

(See page 67 for additional Muncie Start information.)

10R140 10-SPEED FOR F-250–F-600 SUPER DUTY GAS & DIESEL TRUCKS

MUNCIE POWER PRODUCTS
CLUTCH SHIFT

F20-F13



- 10-bolt clutch shift PTO
- Designed for the Ford Super Duty trucks F-250–F-600, with the Ford 10R140 transmissions
- Features patented noise abatement technology
- Plug & play wire harness

MAX. TORQUE
INTERMITTENT: 261 lbs.ft. (354 Nm)

MAX. HP (@ 1,000 RPM)
INTERMITTENT: 50 HP (37 kW)

APPROX. WEIGHT 29 lbs. (13.15 Kg.)

Muncie Start®: Shift Option GS (Gas Engine), Shift Option DS (Diesel Engine), or Shift Option RS (Reduced Harness)

(See page 67 for additional Muncie Start information.)

10R140 10-SPEED FOR F-650 & F-750 SUPER DUTY DIESEL TRUCKS

CLUTCH SHIFT

MUNCIE POWER PRODUCTS

F22-F13

- 8-bolt mounting pattern unique to the 10R140 10-speed F-650 & F-750 Super Duty diesel trucks for model year 2024
- Standard pump flange allowing the use of 5 different Muncie Power series of hydraulic pumps directly to the PTO
- Features patented noise abatement technology
- Plug & play wire harness and RPM Control Module

MAX. TORQUE
INTERMITTENT: 261 lbs.ft. (354 Nm)

MAX. HP (@ 1,000 RPM)
INTERMITTENT: 50 HP (37 kW)

APPROX. WEIGHT 29 lbs. (13.15 Kg.)



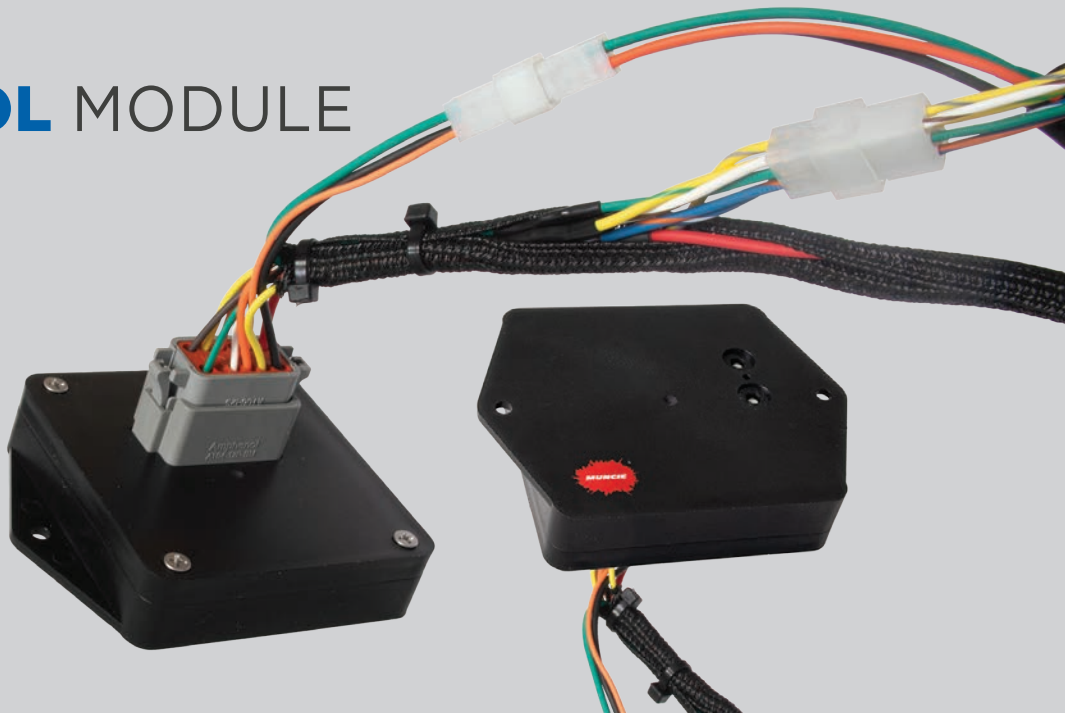
Muncie Start®: Shift Option DS 12 V (Diesel Engine) or Shift Option RS 12 V (Reduced Harness)

(See page 67 for additional Muncie Start information.)

MUNCIE POWER PRODUCTS

RPM CONTROL MODULE

- Plug & play wire harness module, soon to become standard, simplifies the installation process
- Replaces the traditional analog components and harnesses
- LED light sequences provide information to diagnose and notify specific problems allowing for easier troubleshooting



MACK TRANSMISSIONS

MAXITORQUE ES

MUNCIE POWER PRODUCTS

MECHANICAL SHIFT

TG6S-M65



- Versatile 6-bolt mechanical shift PTO
- Lightweight, reduced noise, and superior heat dissipation

MAX. TORQUE

INTERMITTENT: 285 lbs.ft. (386 Nm)

MAX. HP (@ 1,000 RPM)

INTERMITTENT: 54 HP (40 kW)

APPROX. WEIGHT

22 lbs. (10 Kg.)

Gear adapters available to create space, change the PTO output shaft's rotation, or relocate the output shaft.

MUNCIE POWER PRODUCTS

AIR SHIFT



- 6-bolt integral air shift PTO
- High torque capacity to meet demanding applications
- Fits most popular pump types

MAX. TORQUE

INTERMITTENT: 400 lbs.ft. (542 Nm)

MAX. HP (@ 1,000 RPM)

INTERMITTENT: 76 HP (57 kW)

APPROX. WEIGHT

35 lbs. (15.9 Kg.)

Gear adapters available to create space, change the PTO output shaft's rotation, or relocate the output shaft.

MAXITORQUE ES *(continued)*

MECHANICAL SHIFT

MUNCIE POWER PRODUCTS

TG8S-M65

- Versatile 8-bolt mechanical shift PTO
- Lightweight, reduced noise, and superior heat dissipation

MAX. TORQUE
INTERMITTENT: 285 lbs.ft. (386 Nm)

MAX. HP (@ 1,000 RPM)
INTERMITTENT: 54 HP (40 kW)

APPROX. WEIGHT 22 lbs. (10 Kg.)



MUNCIE POWER PRODUCTS

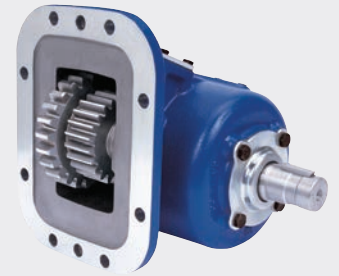
SH8S-M65

- 8-bolt integral air shift PTO
- High torque capacity to meet demanding applications
- Fits most popular pump types

MAX. TORQUE
INTERMITTENT: 400 lbs.ft. (542 Nm)

MAX. HP (@ 1,000 RPM)
INTERMITTENT: 76 HP (57 kW)

APPROX. WEIGHT 35 lbs. (15.9 Kg.)



** PTOs are derated to match transmission ratings.*

MACK TRANSMISSIONS

CLUTCH SHIFT

MUNCIE POWER PRODUCTS CS6S-M65



- 6-bolt clutch shift PTO with patented drag brake
- Direct-mount flanges with ability to rotate allow the pump to be positioned for maximum clearance

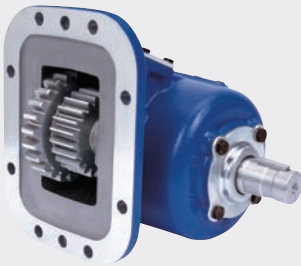
MAX. TORQUE
INTERMITTENT: 300 lbs.ft. (407 Nm)

MAX. HP (@ 1,000 RPM)
INTERMITTENT: 57 HP (43 kW)

APPROX. WEIGHT 47 lbs. (21.3 Kg.)

Gear adapters available to create space, change the PTO output shaft's rotation, or relocate the output shaft.

MUNCIE POWER PRODUCTS CS8S-M65



- 8-bolt clutch shift PTO with patented drag brake
- Direct-mount flanges with ability to rotate allow the pump to be positioned for maximum clearance

MAX. TORQUE
INTERMITTENT: 300 lbs.ft. (407 Nm)

MAX. HP (@ 1,000 RPM)
INTERMITTENT: 57 HP (43 kW)

APPROX. WEIGHT 47 lbs. (21.3 Kg.)

mDRIVE

MECHANICAL SHIFT - REAR MOUNT

INTERPUMP HYDRAULICS P81-VIS

- Mechanically shifted through-shaft PTO
- Heavy-duty PTO for high torque applications
- Driveline applications
- Includes adapter and stud kit

MAX. TORQUE
INTERMITTENT: 442 lbs.ft. (599 Nm)

MAX. HP (@ 1,000 RPM)
INTERMITTENT: 84 HP (62 kW)

APPROX. WEIGHT 9 lbs. (4.08 Kg.)



INTERPUMP HYDRAULICS P82-VIS

- Mechanically shifted through-shaft PTO
- Driveline and direct mount pump applications
- DIN and SAE outputs
- Includes adapter and stud kit

MAX. TORQUE
INTERMITTENT: 221 lbs.ft. (300 Nm)

MAX. HP (@ 1,000 RPM)
INTERMITTENT: 42 HP (31 kW)

APPROX. WEIGHT 15 lbs. (6.80 Kg.)



INTERPUMP HYDRAULICS P84-VIS

- Mechanically shifted through-shaft PTO
- Driveline and direct mount pump applications
- DIN and SAE outputs
- Includes adapter and stud kit

MAX. TORQUE
INTERMITTENT: 317 lbs.ft. (430 Nm)

MAX. HP (@ 1,000 RPM)
INTERMITTENT: 70 HP (52 kW)

APPROX. WEIGHT 21 lbs. (9.53 Kg.)



MACK TRANSMISSIONS (continued)

mDRIVE

MECHANICAL SHIFT - REAR MOUNT

INTERPUMP HYDRAULICS

P86-VIS



- Mechanically shifted through-shaft PTO
- Driveline and direct mount pump applications
- DIN and SAE outputs
- Includes adapter and stud kit

MAX. TORQUE
INTERMITTENT: 369 lbs.ft. (500 Nm)

MAX. HP (@ 1,000 RPM)
INTERMITTENT: 70 HP (52 kW)

APPROX. WEIGHT 26 lbs. (11.8 Kg.)

INTERPUMP HYDRAULICS

P88-VIS



- Mechanically shifted through-shaft PTO
- Driveline and direct mount pump applications
- DIN and SAE outputs
- Includes adapter and stud kit

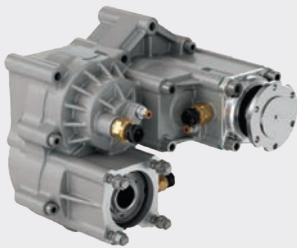
MAX. TORQUE
INTERMITTENT: 369 lbs.ft. (500 Nm)

MAX. HP (@ 1,000 RPM)
INTERMITTENT: 70 HP (52 kW)

APPROX. WEIGHT 28 lbs. (12.5 Kg.)

INTERPUMP HYDRAULICS

P90-VIS



- Dual output, heavy-duty PTO
- Driveline and direct mount pump applications
- Includes adapter and stud kit

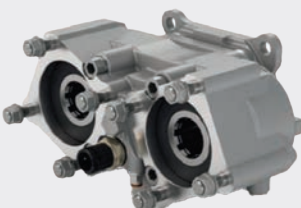
MAX. TORQUE
OUTPUT 1: 590 lbs.ft. (800 Nm)
OUTPUT 2: 590 lbs.ft. (800 Nm)

MAX. HP (@ 1,000 RPM)
INTERMITTENT: 112 HP (84 kW)

APPROX. WEIGHT 46 lbs. (21 Kg.)

INTERPUMP HYDRAULICS

P93-VIS



- Dual output, heavy-duty PTO
- Driveline and direct mount pump applications
- DIN and SAE outputs
- Includes adapter and stud kit

MAX. TORQUE
OUTPUT 1: 369 lbs.ft. (500 Nm)
OUTPUT 2: 369 lbs.ft. (500 Nm)

MAX. HP (@ 1,000 RPM)
INTERMITTENT: 70 HP (52 kW)

APPROX. WEIGHT 31 lbs. (14 Kg.)

PACCAR TRANSMISSIONS

PACCAR TX8

MECHANICAL SHIFT

INTERPUMP HYDRAULICS

P57-Z11

- Pneumatically shifted clutch pack
- Internally pressure-lubricated bearings
- Compatible with most common gear pumps
- Two-piece installation

MAX. TORQUE
INTERMITTENT: 406 lbs.ft. (550 Nm)

MAX. HP (@ 1,000 RPM)
INTERMITTENT: 77 HP (58 kW)

APPROX. WEIGHT 42 lbs. (19 Kg.)



INTERPUMP HYDRAULICS

P58-Z11

- Pneumatically shifted clutch pack
- Internally pressure-lubricated bearings
- Compatible with most common gear pumps
- 121% of engine speed

MAX. TORQUE
INTER./CONTINUOUS: 420 lbs.ft. (569 Nm)

MAX. HP (@ 1,000 RPM)
INTER./CONTINUOUS: 80 HP (60 kW)

APPROX. WEIGHT 47 lbs. (21 Kg.)



INTERPUMP HYDRAULICS

P59-Z11

- Pneumatically shifted clutch pack
- Internally pressure-lubricated bearings
- Compatible with most common gear pumps
- Two-piece installation

MAX. TORQUE
INTERMITTENT: 332 lbs.ft. (450 Nm)

MAX. HP (@ 1,000 RPM)
INTERMITTENT: 63 HP (47 kW)

APPROX. WEIGHT 42 lbs. (19 Kg.)



PACCAR TRANSMISSIONS *(continued)*

PACCAR TX8

MECHANICAL SHIFT

INTERPUMP HYDRAULICS

P60-Z11



- Pneumatically shifted clutch pack
- Internally pressure-lubricated bearings
- Compatible with most common gear pumps
- 121% of engine speed

MAX. TORQUE

INTERMITTENT: 258 lbs.ft. (350 Nm)

MAX. HP (@ 1,000 RPM)

INTERMITTENT: 49 HP (37 kW)

APPROX. WEIGHT

33 lbs. (15 Kg.)

INTERPUMP HYDRAULICS

P61-Z11



- Pneumatically shifted clutch pack
- Internally pressure-lubricated bearings
- Compatible with most common gear pumps
- Two-piece installation

MAX. TORQUE

INTERMITTENT: 258 lbs.ft. (350 Nm)

MAX. HP (@ 1,000 RPM)

INTERMITTENT: 49 HP (37 kW)

APPROX. WEIGHT

38 lbs. (17 Kg.)

PACCAR TX12 (E80)/PACCAR TX18 (E70)

MECHANICAL SHIFT

MUNCIE POWER PRODUCTS

TG8F-E80 AND TG8F-E70

- Versatile 8-bolt mechanical shift PTO
- Lightweight, reduced noise, and superior heat dissipation

MAX. TORQUE INTERMITTENT:	285 lbs.ft. (386 Nm)
MAX. HP (@ 1,000 RPM) INTERMITTENT:	54 HP (40 kW)
APPROX. WEIGHT	22 lbs. (10 Kg.)

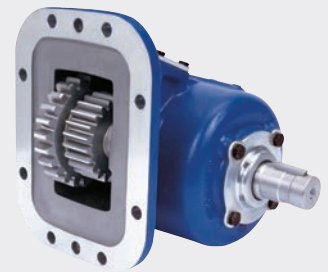


MUNCIE POWER PRODUCTS

SH8F-E80

- 8-bolt mechanical shift PTO
- High torque capacity to meet demanding applications
- Fits most popular pump types
- PACCAR TX12 only

MAX. TORQUE INTERMITTENT:	366 lbs.ft. (496 Nm)
MAX. HP (@ 1,000 RPM) INTERMITTENT:	70 HP (52 kW)
APPROX. WEIGHT	35 lbs. (15.9 Kg.)

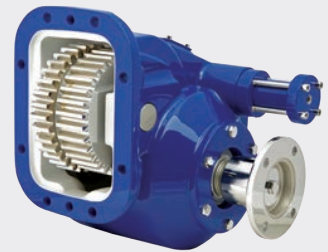


MUNCIE POWER PRODUCTS

828F-E80 AND 828F-E70

- Heavy-duty, 8-bolt mechanical shift PTO
- Cast-iron housing, lever or air shift, and optional single mounts pump
- Designed for use with high-torque mechanical equipment

MAX. TORQUE INTERMITTENT:	500 lbs.ft. (678 Nm)
MAX. HP (@ 1,000 RPM) INTERMITTENT:	95 HP (71 kW)
APPROX. WEIGHT	85 lbs. (38.6 Kg.)



PACCAR TRANSMISSIONS (continued)

PACCAR TX12 (EHD)/PACCAR TX18 (EXD)

MECHANICAL SHIFT - REAR MOUNT

INTERPUMP HYDRAULICS

P81-EHD OR P81-EXD



- Mechanically shifted through-shaft PTO
- Heavy-duty PTO for high-torque applications
- Driveline applications
- Includes adapter and stud kit

MAX. TORQUE
INTERMITTENT: 442 lbs.ft. (599 Nm)

MAX. HP (@ 1,000 RPM)
INTERMITTENT: 84 HP (62 kW)

APPROX. WEIGHT 9 lbs. (4.08 Kg.)

INTERPUMP HYDRAULICS

P82-EXD



- Mechanically shifted through-shaft PTO
- Driveline and direct mount pump applications
- DIN and SAE outputs
- Includes adapter and stud kit

MAX. TORQUE
INTERMITTENT: 221 lbs.ft. (300 Nm)

MAX. HP (@ 1,000 RPM)
INTERMITTENT: 42 HP (31 kW)

APPROX. WEIGHT 15 lbs. (6.8 Kg.)

INTERPUMP HYDRAULICS

P84-EHD OR P84-EXD



- Mechanically shifted through-shaft PTO
- Driveline and direct mount pump applications
- DIN and SAE outputs
- Includes adapter and stud kit

MAX. TORQUE
INTERMITTENT: 369 lbs.ft. (500 Nm)

MAX. HP (@ 1,000 RPM)
INTERMITTENT: 70 HP (52 kW)

APPROX. WEIGHT 21 lbs. (9.53 Kg.)

INTERPUMP HYDRAULICS

P86-EXD



- Mechanically shifted through-shaft PTO
- Driveline and direct mount pump applications
- DIN and SAE outputs
- Includes adapter and stud kit

MAX. TORQUE
INTERMITTENT: 369 lbs.ft. (500 Nm)

MAX. HP (@ 1,000 RPM)
INTERMITTENT: 70 HP (52 kW)

APPROX. WEIGHT 26 lbs. (11.8 Kg.)

VOLVO TRANSMISSIONS

I-SHIFT

MECHANICAL SHIFT – REAR MOUNT

INTERPUMP HYDRAULICS P81-VIS

- Mechanically shifted through-shaft PTO
- Heavy-duty PTO for high-torque applications
- Driveline applications
- Includes adapter and stud kit

MAX. TORQUE
INTERMITTENT: 738 lbs.ft. (1,000 Nm)

MAX. HP (@ 1,000 RPM)
INTERMITTENT: 140 HP (104 kW)

APPROX. WEIGHT 4 lbs. (1.65 Kg.)



INTERPUMP HYDRAULICS P82-VIS

- Mechanically shifted through-shaft PTO
- Driveline and direct mount pump applications
- DIN and SAE outputs
- Includes adapter and stud kit

MAX. TORQUE
INTERMITTENT: 221 lbs.ft. (300 Nm)

MAX. HP (@ 1,000 RPM)
INTERMITTENT: 42 HP (31 kW)

APPROX. WEIGHT 15 lbs. (6.80 Kg.)



INTERPUMP HYDRAULICS P84-VIS

- Mechanically shifted through-shaft PTO
- Driveline and direct mount pump applications
- DIN and SAE outputs
- Includes adapter and stud kit

MAX. TORQUE
INTERMITTENT: 369 lbs.ft. (500 Nm)

MAX. HP (@ 1,000 RPM)
INTERMITTENT: 70 HP (52 kW)

APPROX. WEIGHT 21 lbs. (9.53 Kg.)



VOLVO TRANSMISSIONS

I-SHIFT

MECHANICAL SHIFT - REAR MOUNT

INTERPUMP HYDRAULICS

P86-VIS



- Mechanically shifted through-shaft PTO
- Driveline and direct mount pump applications
- DIN and SAE outputs
- Includes adapter and stud kit

MAX. TORQUE
INTERMITTENT: 369 lbs.ft. (500 Nm)

MAX. HP (@ 1,000 RPM)
INTERMITTENT: 70 HP (52 kW)

APPROX. WEIGHT 26 lbs. (11.8 Kg.)

INTERPUMP HYDRAULICS

P88-VIS



- Mechanically shifted through-shaft PTO
- Driveline and direct mount pump applications
- DIN and SAE outputs
- Includes adapter and stud kit

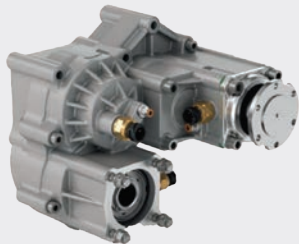
MAX. TORQUE
INTERMITTENT: 369 lbs.ft. (500 Nm)

MAX. HP (@ 1,000 RPM)
INTERMITTENT: 70 HP (52 kW)

APPROX. WEIGHT 28 lbs. (12.5 Kg.)

INTERPUMP HYDRAULICS

P90-VIS



- Dual output, heavy-duty PTO
- Driveline and direct mount applications
- Includes adapter and stud kit

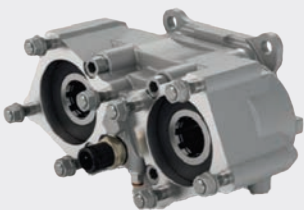
MAX. TORQUE
OUTPUT 1: 590 lbs.ft. (800 Nm)
OUTPUT 2: 590 lbs.ft. (800 Nm)

MAX. HP (@ 1,000 RPM)
INTERMITTENT: 112 HP (84 kW)

APPROX. WEIGHT 46 lbs. (21 Kg.)

INTERPUMP HYDRAULICS

P93-VIS



- Dual output, heavy-duty PTO
- Driveline and direct mount pump applications
- DIN and SAE outputs
- Includes adapter and stud kit

MAX. TORQUE
OUTPUT 1: 369 lbs.ft. (500 Nm)
OUTPUT 2: 369 lbs.ft. (500 Nm)

MAX. HP (@ 1,000 RPM)
INTERMITTENT: 70 HP (52 kW)

APPROX. WEIGHT 31 lbs. (14 Kg.)

ZF TRANSMISSIONS

POWERLINE

PNEUMATIC SHIFT

INTERPUMP HYDRAULICS

P57-Z11

- Pneumatically shifted clutch pack
- Internally pressure-lubricated bearings
- Compatible with most common gear pumps
- Two-piece installation

MAX. TORQUE
INTER./CONTINUOUS: 406 lbs.ft. (550 Nm)

MAX. HP (@ 1,000 RPM)
INTER./CONTINUOUS: 77 HP (58 kW)

APPROX. WEIGHT 42 lbs. (19 Kg.)



INTERPUMP HYDRAULICS

P58-Z11

- Pneumatically shifted clutch pack
- Internally pressure-lubricated bearings
- Compatible with most common gear pumps
- 121% of engine speed

MAX. TORQUE
INTER./CONTINUOUS: 420 lbs.ft. (570 Nm)

MAX. HP (@ 1,000 RPM)
INTER./CONTINUOUS: 80 HP (60 kW)

APPROX. WEIGHT 47 lbs. (21 Kg.)



INTERPUMP HYDRAULICS

P59-Z11

- Pneumatically shifted clutch pack
- Internally pressure-lubricated bearings
- Compatible with most common gear pumps
- Two-piece installation

MAX. TORQUE
INTER./CONTINUOUS: 332 lbs.ft. (450 Nm)

MAX. HP (@ 1,000 RPM)
INTER./CONTINUOUS: 63 HP (37 kW)

APPROX. WEIGHT 42 lbs. (19 Kg.)



ZF TRANSMISSIONS *(continued)*

POWERLINE

PNEUMATIC SHIFT

INTERPUMP HYDRAULICS

P60-Z11



- Pneumatically shifted clutch pack
- Internally pressure-lubricated bearings
- Compatible with most common gear pumps
- 121% of engine speed

MAX. TORQUE

INTER./CONTINUOUS: 258 lbs.ft. (350 Nm)

MAX. HP (@ 1,000 RPM)

INTER./CONTINUOUS: 49 HP (37 kW)

APPROX. WEIGHT

33 lbs. (15 Kg.)

INTERPUMP HYDRAULICS

P61-Z11



- Pneumatically shifted clutch pack
- Internally pressure-lubricated bearings
- Compatible with most common gear pumps
- Two-piece installation

MAX. TORQUE

INTER./CONTINUOUS: 258 lbs.ft. (350 Nm)

MAX. HP (@ 1,000 RPM)

INTER./CONTINUOUS: 49 HP (37 kW)

APPROX. WEIGHT

38 lbs. (17 Kg.)

SPLIT SHAFT PTOS

INTERPUMP HYDRAULICS

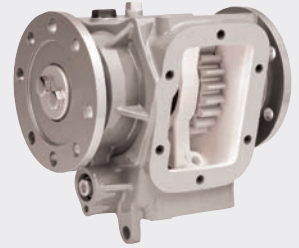
SS66 SERIES

- Provides two 6-bolt PTO apertures where none exist on the main transmission or where space limitations restrict access to accept common PTO series
- Engagement can be via air shift or heavy-duty, push-pull cable

MAX. TORQUE	
THROUGHPUT:	2,900 lbs.ft. (4,000 Nm)
PTO DRIVE GEAR:	289 lbs.ft. (392 Nm)

MAX. HP (@ 1,000 RPM)	
PTO DRIVE GEAR:	55 HP (41 kW)

APPROX. WEIGHT	
WITHOUT PTO:	20 lbs. (9.1 Kg.)



INTERPUMP HYDRAULICS

SS88 SERIES

- Allows for mounting of two 8-bolt PTOs behind the transmission on medium- and heavy-duty vehicles
- High-quality 6-pitch spur gear to handle the torque ratings of large 8-bolt PTOs

MAX. TORQUE	
THROUGHPUT:	14,400 lbs.ft. (20,000 Nm)
PTO DRIVE GEAR:	21,600 lbs.ft. (30,000 Nm)
PTO DRIVE GEAR:	1,200 lbs.ft. (1,627 Nm)

MAX. HP (@ 1,000 RPM)	
PTO DRIVE GEAR:	228 HP (170 kW)

APPROX. WEIGHT	
WITHOUT PTO:	160 lbs. (72.6 Kg.)



INTERPUMP HYDRAULICS

SSH2 & SSV2/4 SERIES

- Used when auxiliary power requirements exceed the capacity of transmission-mounted PTOs
- Upright and horizontal versions provide access to output drives as needed

MAX. TORQUE	
THROUGHPUT:	14,400 lbs.ft. (20,000 Nm)
THROUGHPUT:	21,600 lbs.ft. (30,000 Nm)
SSH2 Series OUTPUT:	940 lbs.ft. (1,274 Nm)
SSV2/4 Series OUTPUT:	796 / 433 lbs.ft. (1,079 / 587 Nm)

MAX. HP (@ 1,000 RPM)	
SSH2 Series OUTPUT:	178 HP (133 kW)
SSV2/4 Series OUTPUT:	152 / 82 HP (113 / 61 kW)

APPROX. WEIGHT	
SSH2 Series:	234 lbs. (106.1 Kg.)
SSV2/4 Series:	255 lbs. (115.7 Kg.)



SSH2 Series



SSV2/4 Series

ENGINE MOUNT

SCANIA

PNEUMATIC SHIFT

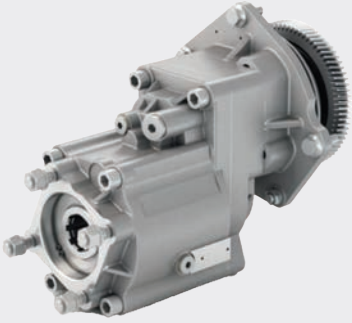
INTERPUMP HYDRAULICS
87S

- Rear engine mount clutch shift PTO
- Fits 6- and 8-cylinder engines
- Multiple ratios

MAX. TORQUE
 INTERMITTENT: 443 lbs.ft. (600 Nm)

MAX. HP (@ 1,000 RPM)
 INTERMITTENT: 84 HP (63 kW)

APPROX. WEIGHT 60 lbs. (27 Kg.)



CONSTANT DRIVE

INTERPUMP HYDRAULICS
610

- Rear engine mount constant drive PTO
- Fits 6- and 8-cylinder engines

MAX. TORQUE
 INTERMITTENT: 443 lbs.ft. (600 Nm)

MAX. HP (@ 1,000 RPM)
 INTERMITTENT: 84 HP (63 kW)

APPROX. WEIGHT 18 lbs. (8 Kg.)



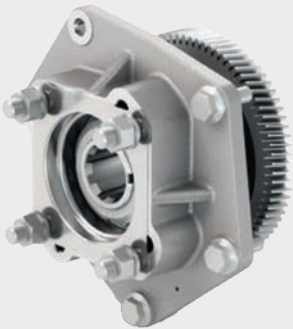
INTERPUMP HYDRAULICS
611

- Rear engine mount constant drive PTO
- Fits 6- and 8-cylinder engines

MAX. TORQUE
 INTERMITTENT: 590 lbs.ft. (800 Nm)

MAX. HP (@ 1,000 RPM)
 INTERMITTENT: 112 HP (84 kW)

APPROX. WEIGHT 18 lbs. (8 Kg.)



ENGINE FLYWHEEL

INTERPUMP HYDRAULICS

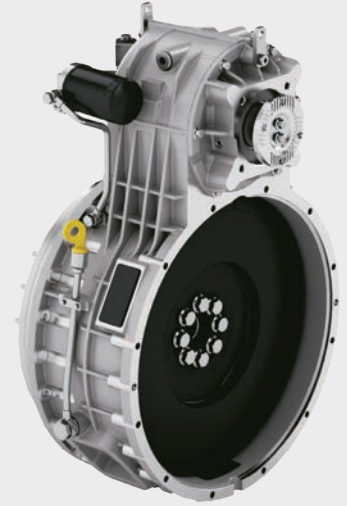
EFP-1

- 100% of engine available torque
- Can be used on manual, automated, or fully automatic transmissions
- Ideal for firetrucks, refrigerator trucks, concrete mixer, sewer cleaners, snow plows, digger derricks, and other heavy-duty applications
- Multiple ratios

MAX. TORQUE
OUTPUT: 1,844 lbs.ft. (2,500 Nm)

MAX. HP (@ 1,000 RPM)
CONTINUOUS: 536 HP (400 kW)

APPROX. WEIGHT 463 lbs. (210 Kg.)



INTERPUMP HYDRAULICS

EFP-2

- 100% of engine available torque
- Can be used on manual, automated, or fully automatic transmissions
- Ideal for firetrucks, refrigerator trucks, concrete mixer, sewer cleaners, snow plows, digger derricks, and other heavy-duty applications
- Multiple ratios

MAX. TORQUE
OUTPUT: 736 lbs.ft. (1,000 Nm)

MAX. HP (@ 1,000 RPM)
CONTINUOUS: 211 HP (157 kW)

APPROX. WEIGHT 203 lbs. (92 Kg.)



GEAR PUMPS SAE

MUNCIE POWER PRODUCTS

PF4 SERIES



- 11 pump sizes available to fit a wide variety of applications
- Uni-rotational design allows flow in one direction
- Pressure-balanced bushing blocks and sleeve bearings provide long life and high performance

MAX. OP. PRESSURE 3,625–2,320 PSI (250–160 BAR)

FLOW RATE (@ 1,000 RPM)* 1.60–8.70 GPM (6.06–33 LPM)

DISPLACEMENT 0.37–2.01 cu.in. (6–33 cc.)

APPROX. WEIGHT 7.69–10.01 lbs. (3.4–4.5 Kg.)

MUNCIE POWER PRODUCTS

PH SERIES



- All cast iron bushing pump designed for low to medium flow systems
- Uni-rotational design allows flow in one direction
- Available with integral, priority flow control capabilities; great for use on steering applications

MAX. OP. PRESSURE 3,500–2,500 PSI (241–172 BAR)

FLOW RATE (@ 1,000 RPM)* 2.7–10.7 GPM (10–41 LPM)

DISPLACEMENT 0.62–2.48 cu.in. (10.2–40.6 cc.)

APPROX. WEIGHT 18–25 lbs. (8.3–11.3 Kg.)

MUNCIE POWER PRODUCTS

PK SERIES



- All cast iron construction with 4 ports and roller bearing design
- Bi-rotational, four-port design provides flexibility to operate in either direction
- Designed to meet the application needs of either a pump or a motor
- Available in tandem and triple configurations; contact Muncie Power for configurations and availability

MAX. OP. PRESSURE 3,000–2,500 PSI (207–172 BAR)

FLOW RATE (@ 1,000 RPM)* 4.2–17.1 GPM (15–64 LPM)

DISPLACEMENT 0.98–3.94 cu.in. (16.1–64.6 cc.)

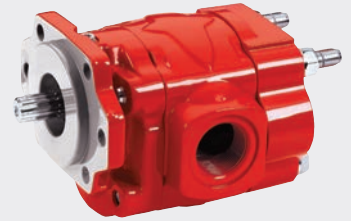
APPROX. WEIGHT 26.5–34.1 lbs. (12.1–15.5 Kg.)

Note: * Flow rates are theoretical.

MUNCIE POWER PRODUCTS
PL SERIES

- All cast iron construction with 4 ports and roller bearing design
- Bi-rotational, four-port design provides flexibility to operate in either direction
- Available in tandem and triple configurations; contact Muncie Power for configurations and availability

MAX. OP. PRESSURE	3,000–2,000 PSI (207–138 BAR)
FLOW RATE (@ 1,000 RPM)*	13.8–30.3 GPM (53–114 LPM)
DISPLACEMENT	3.18–7.01 cu.in. (52.1–114.9 cc.)
APPROX. WEIGHT	39.9–51 lbs. (18–23.2 Kg.)



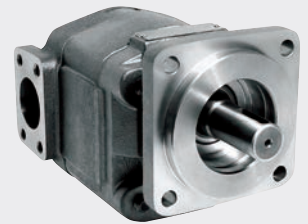
MUNCIE POWER PRODUCTS
Z SERIES

- Pump assemblies custom built for replacement or new installation requirements
- Cast iron construction available in both roller bearing and bushing designs with a wide variety of displacements within each product family
- Industry-standard shafts and port options are available

MAX. OP. PRESSURE	Roller Bearing: 3,000–2,000 PSI (207–138 BAR) Bushing Series: 3,500–2,500 PSI (241–172 BAR)
FLOW RATE (@ 1,000 RPM)*	Roller Bearing: 4.3–53.2 GPM (16.3–201.4 LPM)** Bushing Series: 2–39 GPM (7.6–147.6 LPM)**
DISPLACEMENT	Roller Bearing: 0.99–12.3 cu.in. (16.2–201.6 cc.) Bushing Series: 0.47–9 cu.in. (7.7–147.5 cc.)
APPROX. WEIGHT	Roller Bearing – Single: 31–92 lbs. (14.1–47.73 Kg.) Roller Bearing – Tandem: 25–79 lbs. (13.2–35.8 Kg.) Bushing Series – Single: 15.5–71 lbs. (7–32.2 Kg.) Bushing Series – Tandem: 15.5–72 lbs. (7–32.7 Kg.)



Roller Bearing Design



Bushing Design

Notes: * Flow rates are theoretical. ** Flow rate per outlet.

OPTIMUM SERIES

GEAR PUMPS/MOTORS

MUNCIE POWER PRODUCTS

OPTIMUM W SERIES



- Provides 8 displacements to cover low flow rates, high-pressure requirements
- Bushings provide a high performance and longer life of the pump
- Bi-rotational, 4-port design is standard with speeds up to 3,600 RPM
- Available in tandem and triple configurations; contact Muncie Power for configurations and availability
- Quiet design and Muncie Power's OPTI-Grip® technology to resist casting separation

MAX. OP. PRESSURE 4,350–3,000 PSI (300–207 BAR)

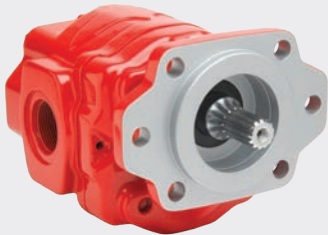
FLOW RATE (@ 1,000 RPM)* 6.3–21 GPM (23.9–79.8 LPM)

DISPLACEMENT 1.45–4.87 cu.in. (23.9–79.8 cc.)

APPROX. WEIGHT 40.8–50.7 lbs. (18.5–23 Kg.)

MUNCIE POWER PRODUCTS

OPTIMUM X SERIES



- Provides 9 displacements to cover medium to heavy flow, high-pressure requirements
- Bushings provide a high performance and longer life for the pump
- Bi-rotational, 4-port design is standard with speeds up to 3,000 RPM
- Available in tandem and triple configurations; contact Muncie Power for configurations and availability
- Quiet design and Muncie Power's OPTI-Grip® technology to resist casting separation

MAX. OP. PRESSURE 4,350–2,250 PSI (300–155 BAR)

FLOW RATE (@ 1,000 RPM)* 13.8–36.5 GPM (51.2–138.2 LPM)

DISPLACEMENT 3.18–8.43 cu.in. (52.1–138 cc.)

APPROX. WEIGHT 52.9–67 lbs. (24–30.4 Kg.)

MUNCIE POWER PRODUCTS

OPTIMUM X LIVE-FLOOR



- Long-life, high-performance bushings
- Quiet design and Muncie Power's OPTI-Grip® technology to resist casting separation
- Designed specifically for use on live floor applications

MAX. OP. PRESSURE 3,000 PSI (207 BAR)

FLOW RATE (@ 1,000 RPM)* 27.5 GPM (104.1 LPM)

DISPLACEMENT 6.35 cu.in. (104 cc.)

APPROX. WEIGHT 61.1 lbs. (27.7 Kg.)

Note: * Flow rates are theoretical.

Customer Service | 800-367-7867

GEAR PUMPS DIN

INTERPUMP HYDRAULICS

FZO SERIES

- 9 displacements available
- Medium-duty, mono-directional pump
- Designed for both low and high pressure applications

MAX. OP. PRESSURE	4,569–2,611 PSI (315–180 BAR)
FLOW RATE (@ 1,000 RPM)*	3.97–27.78 GPM (15–105 LPM)
DISPLACEMENT	0.915–6.04 cu.in. (15–105 cc.)
APPROX. WEIGHT	18.5–30.2 lbs. (8.4–13.7 Kg.)



INTERPUMP HYDRAULICS

FZH SERIES

- 7 displacements available
- Heavy-duty, mono-directional pump
- Designed for both low and high pressure applications

MAX. OP. PRESSURE	4,351–2,756 PSI (300–190 BAR)
FLOW RATE (@ 1,000 RPM)*	16.38–39.1 GPM (62–148 LPM)
DISPLACEMENT	3.78–9.03 cu.in. (62–148 cc.)
APPROX. WEIGHT	37.7–49.6 lbs. (17.1–22.5 Kg.)



INTERPUMP HYDRAULICS

FZH V SERIES

- 7 displacements available
- Heavy-duty, tandem mounting, mono-directional pump
- Designed for both low and high pressure applications

MAX. OP. PRESSURE	4,351–2,756 PSI (300–190 BAR)
FLOW RATE (@ 1,000 RPM)*	16.38–39.1 GPM (62–148 LPM)
DISPLACEMENT	3.78–9.03 cu.in. (62–148 cc.)
APPROX. WEIGHT	37.7–49.6 lbs. (17.1–22.5 Kg.)



INTERPUMP HYDRAULICS

BLH AND BPH SERIES

- 4 displacements available
- Bi-directional pump
- Designed for both low and high pressure applications

MAX. OP. PRESSURE	3,626–3,046 PSI (250–210 BAR)
FLOW RATE (@ 1,000 RPM)*	23.46–31.49 GPM (88.8–119.2 LPM)
DISPLACEMENT	5.42–7.27 cu.in. (88.8–119.2 cc.)
APPROX. WEIGHT	45.86–50.49 lbs. (20.8–22.9 Kg.)



BLH



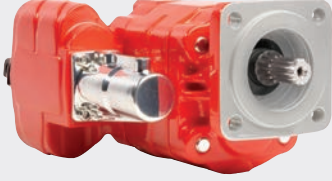
BPH

Note: * Flow rates are theoretical.

DUMP & HOIST PUMPS

MUNCIE POWER PRODUCTS E SERIES DUMP

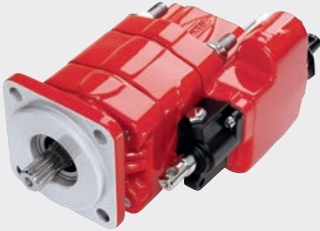
- Standard equipment for tandem- and tri-axle dump trucks and dump trailers with high-volume cylinders
- Uni-rotational design allows flow in one direction
- 2- or 3-line system options available



MAX. OP. PRESSURE	2,500 PSI (172 BAR)
FLOW RATE (@ 1,000 RPM)*	22.5–27.6 GPM (85.2–104.5 LPM)
DISPLACEMENT	5.20–6.37 cu.in. (85.2–104.4 cc.)
APPROX. WEIGHT	67–69 lbs. (30.4–31.3 Kg.)

MUNCIE POWER PRODUCTS S SERIES HOIST

- Designed specifically for use on small single- or tandem-axle dump trucks
- Uni-rotational design allows flow in one direction
- 2- or 3-line system options available



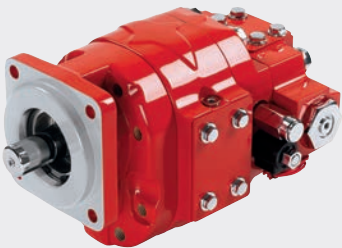
MAX. OP. PRESSURE	3,000–2,500 PSI (207–172 BAR)**
FLOW RATE (@ 1,000 RPM)*	6.4–17.16 GPM (24.2–65 LPM)
DISPLACEMENT	1.47–3.94 cu.in. (24–65 cc.)
APPROX. WEIGHT	32–38 lbs. (14.8–17.2 Kg.)

Notes: * Flow rates are theoretical. ** Requires high pressure relief PS1-1231VH for settings above 2,500 PSI.

REFUSE PUMPS

MUNCIE POWER PRODUCTS MLSM SERIES LIVE PAK

- Provides protection against hydraulic overspeed damage while allowing the driver to maintain full use of the hydraulic system on refuse vehicles
- Uni-rotational design allows flow in one direction
- Built-in flow limiter redirects excess pump flow to the reservoir when pump is on



MAX. OP. PRESSURE	3,000–2,500 PSI (207–172 BAR)
FLOW RATE (@ 1,000 RPM)*	26.4–44.4 GPM (99.3–168.1 LPM)
DISPLACEMENT	6.1–10.25 cu.in. (102–166 cc.)
APPROX. WEIGHT	103–113 lbs. (46.7–51.2 Kg.)

Note: Maximum temperature is 200° F (93° C) for the non-adjustable pump safety relief valve.

Note: * Flow rates are theoretical.

MUNCIE POWER PRODUCTS

POWR-PRO & POWER-MISER SYSTEMS

- Dry valve, air-actuated pump systems designed primarily for refuse vehicles
- Lowers operating costs by reducing horsepower draw in OFF mode, saving fuel
- Powr-Pro utilizes a butterfly style valve; Power-Miser utilizes an air actuated, plunger-type dry valve

MAX. OP. PRESSURE	PL and PM Series:	3,000–2,500 PSI (207–172 BAR)
FLOW RATE (@ 1,000 RPM)*	PL and PM Series:	13.8–40.1 GPM (52.2–151.8 LPM)
DISPLACEMENT	PL Series:	3.18–5.73 cu.in. (52–93 cc.)
	PM Series:	6.1–9.27 cu.in. (100–152 cc.)
APPROX. WEIGHT	PL and PM Series:	49–89 lbs. (22.2–40.4 Kg.)

Note: * Flow rates are theoretical.



Powr-Pro



Power-Miser

VANE PUMPS

INTERPUMP HYDRAULICS

VCCG SERIES DIN

- 13 cartridge sizes available to suit a variety of applications

MAX. OP. PRESSURE		3,988 PSI (275 BAR)
FLOW RATE (@ 1,500 RPM)*		2.83–38.18 GPM (10.7–144.5 LPM)
DISPLACEMENT		0.66–6.1 cu.in. (10.8–100 cc.)
APPROX. WEIGHT		61 lbs. (28 Kg.)



INTERPUMP HYDRAULICS

VCCM SERIES SAE B

- 13 cartridge sizes available to suit a variety of applications
- Availability of SAE B, B-B, C or key shafts

MAX. OP. PRESSURE		3,988 PSI (275 BAR)
FLOW RATE (@ 1,500 RPM)*		2.83–38.18 GPM (10.7–144.5 LPM)
DISPLACEMENT		0.66–6.1 cu.in. (10.8–100 cc.)
APPROX. WEIGHT		61 lbs. (28 Kg.)

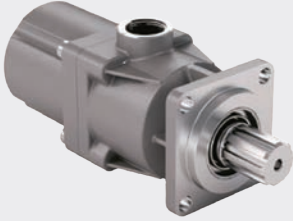


Note: * Flow rate (@ 1,500 RPM–2,030 PSI)

FIXED DISPLACEMENT PISTON PUMPS

INTERPUMP HYDRAULICS

PE SERIES

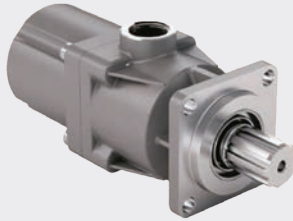


- 4 displacements available
- Bi-rotational piston pump
- Ideal for cranes, hooklift, roll off, or other heavy-duty applications where pressure and long duty cycles are necessary

MAX. OP. PRESSURE	4,786 PSI (330 BAR)
FLOW RATE (@ 1,000 RPM)*	4.23–8.47 GPM (16–32 LPM)
DISPLACEMENT	0.98–1.95 cu.in. (16–32 cc.)
APPROX. WEIGHT	23.15 lbs. (10.5 Kg.)

INTERPUMP HYDRAULICS

PH SERIES

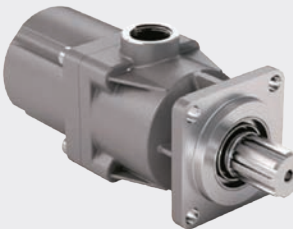


- 3 displacements available
- Bi-rotational piston pump
- Ideal for cranes, hooklift, roll off, or other heavy-duty applications where pressure and long duty cycles are necessary

MAX. OP. PRESSURE	4,786 PSI (330 BAR)
FLOW RATE (@ 1,000 RPM)*	9.79–15.87 GPM (37–60 LPM)
DISPLACEMENT	2.26–3.66 cu.in. (37–60 cc.)
APPROX. WEIGHT	22.93 lbs. (10.4 Kg.)

INTERPUMP HYDRAULICS

PE HIGH FLOW SERIES



- 4 displacements available
- Bi-rotational piston pump
- Ideal for cranes, hooklift, roll off, or other heavy-duty applications where pressure and long duty cycles are necessary

MAX. OP. PRESSURE	4,351 PSI (300 BAR)
FLOW RATE (@ 1,000 RPM)*	18.52–26.46 GPM (70–100 LPM)
DISPLACEMENT	4.27–6.1 cu.in. (70–100 cc.)
APPROX. WEIGHT	38.58 lbs. (17.5 Kg.)

Note: * Flow rates are theoretical.

INTERPUMP HYDRAULICS

PE DUAL FLOW SERIES

- 3 displacements available
- Bi-rotational piston pump
- Ideal for cranes, hooklift, roll off, or other heavy-duty applications where pressure and long duty cycles are necessary

MAX. OP. PRESSURE	5,076 PSI (350 BAR)
FLOW RATE (@ 1,000 RPM)*	10.85 / 10.85–13.49 / 13.49 GPM (41 / 41–51 / 51 LPM)
DISPLACEMENT	2.5 / 2.5–3.11 / 3.11 cu.in. (41 / 41–51 / 51 cc.)
APPROX. WEIGHT	38.58 lbs. (17.5 Kg.)



INTERPUMP HYDRAULICS

FX BENT AXIS SERIES

- 9 displacements available
- Mono-directional bent axis piston pump
- A bent axis piston pump with speed capabilities of up to 2,300 RPM

MAX. OP. PRESSURE	6,526–4,351 PSI (450–300 BAR)
FLOW RATE (@ 1,000 RPM)*	4.44–34.35 GPM (16.81–130 LPM)
DISPLACEMENT	1.03–7.93 cu.in. (16.81–130 cc.)
APPROX. WEIGHT	13.89–39.68 lbs. (6.30–18 Kg.)



Note: * Flow rates are theoretical.

VARIABLE DISPLACEMENT PISTON PUMPS

MUNCIE POWER PRODUCTS

PVE SERIES



- Externally adjustable from 1,450–4,495 PSI, preset to 2,610 PSI
- 3 sizes and 2 shaft types available to fit application needs
- Used in closed center hydraulic systems
- Available with either pressure compensation or flow and pressure compensation (load sense)

MAX. OP. PRESSURE	3,770–4,495 PSI (260–310 BAR)
FLOW RATE (@ 1,000 RPM)*	26.4–38.8 GPM (99.9–146.9 LPM)
DISPLACEMENT	6.1–8.97 cu.in. (100–147 cc.)
APPROX. WEIGHT	121 lbs. (54.9 Kg.)

MUNCIE POWER PRODUCTS

PVJ SERIES



- Externally adjustable from 1,450–4,495 PSI, preset to 2,610 PSI
- 3 sizes and 4 shaft types available to fit application needs
- Used in closed center hydraulic systems
- Available with either pressure compensation or flow and pressure compensation (load sense)

MAX. OP. PRESSURE	3,770–4,495 PSI (260–310 BAR)
FLOW RATE (@ 1,000 RPM)*	11.9–19.8 GPM (45.1–75 LPM)
DISPLACEMENT	2.75–4.58 cu.in. (45–75 cc.)
APPROX. WEIGHT	58.8 lbs. (26.7 Kg.)

MUNCIE POWER PRODUCTS

PVL SERIES



- Externally adjustable from 1,450–3,045 PSI, preset to 2,610 PSI
- 2 shaft types available
- Used in closed center hydraulic systems
- Available with either pressure compensation or flow and pressure compensation (load sense)

MAX. OP. PRESSURE	3,045 PSI (210 BAR)
FLOW RATE (@ 1,000 RPM)*	7.9 GPM (29.9 LPM)
DISPLACEMENT	1.83 cu.in. (30 cc.)
APPROX. WEIGHT	53 lbs. (24 Kg.)

Note: * Flow rates are theoretical.

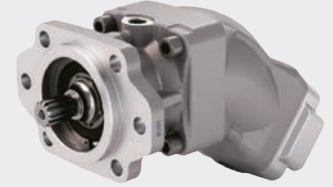
PISTON MOTORS

INTERPUMP HYDRAULICS

MX SAE B

- 6 sizes available
- Low noise level, compact size, and robust design
- 2-bolt mounting flange

MAX. OP. PRESSURE	5,366 PSI (370 BAR)
FLOW RATE (@ 1,000 RPM)*	9–34 GPM (34–130 LPM)
DISPLACEMENT	2.07–7.93 cu.in. (34–130 cc.)
APPROX. WEIGHT	26.46–34.83 lbs. (12–15.8 Kg.)

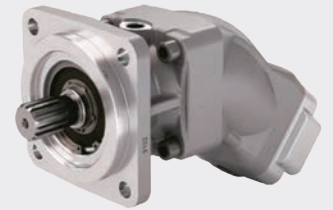


INTERPUMP HYDRAULICS

MX SAE C

- 6 sizes available
- Low level noise, compact size, and robust design
- 4-bolt mounting flange

MAX. OP. PRESSURE	5,366 PSI (370 BAR)
FLOW RATE (@ 1,000 RPM)*	9–34 GPM (34–130 LPM)
DISPLACEMENT	2.07–7.93 cu.in. (34–130 cc.)
APPROX. WEIGHT	37.15–45.41 lbs. (16.85–20.6 Kg.)



Note: * Flow rates are theoretical.

LOW SPEED HIGH TORQUE MOTORS

MUNCIE POWER PRODUCTS

MJ200/MJ475 *BULK FEED APPLICATIONS*



- Roller gerotor design for smooth performance, efficiency, and durability
- Tapered roller bearings for extra side load capacity
- Standard case drain with integral internal drain for extended life
- Disc valve for higher flows and higher pressure
- Available in 7/8" O-Ring ports

MAX. OP. PRESSURE

MJ200:	3,045 PSI (210 BAR)
MJ475:	2,030 PSI (140 BAR)

FLOW RATE

MJ200 (@ 375 RPM):	19.8 GPM (75 LPM)
MJ475 (@ 155 RPM):	19.8 GPM (75 LPM)

DISPLACEMENT

MJ200:	11.83 cu.in. (194 cc.)
MJ475:	28.99 cu.in. (475 cc.)

APPROX. WEIGHT

MJ200:	26 lbs. (11.8 Kg.)
MJ475:	33 lbs. (14.9 Kg.)

MUNCIE POWER PRODUCTS

MJ100 *PRODUCT PUMP APPLICATIONS*



- Roller gerotor design for smooth performance, efficiency, and durability
- Tapered roller bearings for extra side load capacity
- Standard case drain with integral internal drain for extended life
- Disc valve for higher flows and higher pressure
- Available in 7/8" and 1 1/16" O-Ring ports

MAX. OP. PRESSURE

2,975 PSI (205 BAR)

FLOW RATE (@ 750 RPM)

19.8 GPM (75 LPM)

DISPLACEMENT

6.1 cu.in. (100 cc.)

APPROX. WEIGHT

24 lbs. (10.9 Kg.)

MUNCIE POWER PRODUCTS

MB050 SPREADER APPLICATIONS

- Gerotor set provides high efficiency and long life
- Low port profile is suitable for applications with limited space
- Spool valve design offers smooth operation over a wide range of speeds and torques
- Available in 7/8" O-Ring ports or 1/2" NPT ports

MAX. OP. PRESSURE	2,030 PSI (140 BAR)
FLOW RATE (@ 1,150 RPM)	15.8 GPM (60 LPM)
DISPLACEMENT	3.15 cu.in. (51.7 cc.)
APPROX. WEIGHT	14 lbs. (6.4 Kg.)



CLUTCH PUMPS

MUNCIE POWER PRODUCTS

PH SERIES CLUTCH

- Porting available on both the side and rear for tight-fitting chassis hookups
- Pressure-balanced wear plates provide high system efficiency for lower horsepower needs

MAX. OP. PRESSURE	3,500–2,000 PSI (241–138 BAR)
FLOW RATE (@ 1,000 RPM)*	2.7–12.8 GPM (10.2–48.5 LPM)
DISPLACEMENT	0.62–2.96 cu.in. (10.2–48.5 cc.)
APPROX. WEIGHT	34–56 lbs. (15.4–25.4 Kg.)



Note: * Flow rates are theoretical.

HYDRAULIC CYLINDERS

SINGLE-ACTING TELESCOPIC CYLINDERS

MUNCIE POWER PRODUCTS PIN-PIN



- One of the lightest cylinders on the market, which translates to greater payloads, less oil consumption, and faster dumping
- A self-bleeding design for easier installation
- Single head nut with no further adjustments needed
- Chrome-plated final stage to extend product life
- Low maintenance requirements offer many years of top performance without additional expenses

MAX. PRESSURE 3,625 PSI (250 BAR)

NOMINAL BORE 5 in. Model: 2 Sizes
6 in. Model: 7 Sizes
7 in. Model: 14 Sizes
8 in. Model: 14 Sizes

STROKE 84–285 in. (2,134–7,264 mm)

MAX. LIFTING CAPACITY RANGE* 22.6–52.4 ton (201–466 kN)

Note: * Lifting capacity range based on 2,750 PSI (189.7 BAR).

INTERPUMP HYDRAULICS TRUNNION MOUNT



- Mounting style allows for increased capacity in the dump body through a significant reduction or elimination of the dog house
- Available in both 3- and 4-stage versions
- Strict-machining tolerances, solid stop contact faces, and larger overlap between stages make trunnion mount cylinders some of the strongest and most stable cylinders on the market

MAX. PRESSURE* 2,900 or 3,625 PSI
(200 or 220 BAR)

NOMINAL BORE 4.5 in. Model: 3 Sizes
5.5 in. Model: 3 Sizes
6.5 in. Model: 4 Sizes
7.5 in. Model: 2 Sizes

STROKE 90–194 in. (2,286–4,928 mm)

MAX. LIFTING CAPACITY RANGE** 15.7–66.8 ton (140–594 kN)

Note: * Max. pressure depends on cylinder model. ** Lifting capacity range based on 2,750 PSI (189.7 BAR).

INTERPUMP HYDRAULICS
INVERTED FLS*

- Lightweight design for light-duty vehicles
- Self-bleeding design for easier installation
- No head nuts design, no need of adjustments
- Chrome-plated piston rod for longer seal life

MAX. PRESSURE	2,900 PSI (200 BAR)
NOMINAL BORE	3 to 4.5 in. (75 to 110 mm)
STROKE	78–120 in. (1,981–3,048 mm)
MAX. LIFTING CAPACITY RANGE	8–25 ton (78.45–245.17 kN)

Note: * Fully chromed and nitrated version available on demand.

INTERPUMP HYDRAULICS
INVERTED HPFR*

- Lightweight design for light-duty vehicles
- Double lip seals and wipers for no leak and extended durability
- Self-bleeding design for easier installation
- No head nuts design, no need of adjustments
- Chrome-plated piston rod for longer seal life

MAX. PRESSURE	3,626 PSI (250 BAR)
NOMINAL BORE	5 to 9 in. (116 to 221 mm)
STROKE	84–285 in. (2,182–7,250 mm)
MAX. LIFTING CAPACITY RANGE	15–80 ton (147.1–784.53 kN)

Note: * Fully chromed and nitrated version available on demand.



INTERPUMP HYDRAULICS

DOUBLE-ACTING
TELESCOPIC CYLINDERS MDX

Interpump Hydraulics' double-acting cylinders are manufactured to meet individual specifications for a wide variety of work truck applications, including refuse trucks, roll offs, ejector trailers, and more. For more information or to discuss a custom cylinder for your application, please contact our customer service team.



DIRECTIONAL CONTROL VALVES

MUNCIE POWER PRODUCTS V050 SERIES



- Small size, lightweight valve with versatile design configurations
- Available with 7 standard back-cap options and 6 standard control options

FLOW RATE

Nominal:	13 GPM (50 LPM)
Maximum:	16 GPM (60 LPM)

MAX. PRESSURE

1-3 Sections:	5,440 PSI (375 BAR)
4-6 Sections:	5,075 PSI (350 BAR)
7-10 Sections:	4,710 PSI (325 BAR)

MAX. BACK PRESSURE

365 PSI (25 BAR)

MUNCIE POWER PRODUCTS V080 SERIES



- Constructed with high-grade iron castings and nickel-plated spools for use in high-pressure applications
- Load checks and inlet relief valve are standard

FLOW RATE

Nominal:	21 GPM (80 LPM)
Maximum:	30 GPM (114 LPM)

MAX. PRESSURE

1-3 Sections:	5,075 PSI (350 BAR)
4-6 Sections:	4,650 PSI (320 BAR)
7-10 Sections:	4,350 PSI (300 BAR)

MAX. BACK PRESSURE

365 PSI (25 BAR)

MUNCIE POWER PRODUCTS V130 SERIES



- Internal, oil-core design allows for higher flow rates and low pressure drops in a compact package
- Tight tolerances and precision machining keep internal, spool leakages low

FLOW RATE

Nominal:	34 GPM (130 LPM)
Maximum:	55 GPM (208 LPM)

MAX. PRESSURE

1-3 Sections:	5,440 PSI (375 BAR)
4-6 Sections:	5,075 PSI (350 BAR)
7-10 Sections:	4,710 PSI (325 BAR)

MAX. BACK PRESSURE

365 PSI (25 BAR)

MUNCIE POWER PRODUCTS
V250 SERIES

- Built to withstand extreme applications with high-pressure capabilities and high flow rates
- Work-port, relief valves, anti-cavitation valves, combination relief/anti-cavitation valves, and pilot-operated relief valves available

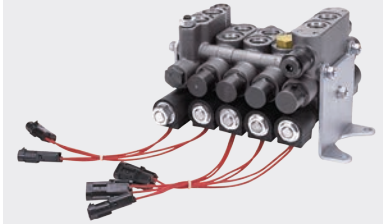
FLOW RATE	
Nominal:	67 GPM (250 LPM)
Maximum:	75 GPM (280 LPM)
MAX. PRESSURE	4,000 PSI (275 BAR)
MAX. BACK PRESSURE	290 PSI (20 BAR)



MUNCIE POWER PRODUCTS
17 SERIES

- A parallel circuit design permits spools to operate independently or simultaneously with the lightest load receiving priority
- Stackable design allows for assembly customization
- Precision-machined spools are hard chrome-plated for maximum life and corrosion resistance

FLOW RATE	
Nominal:	12 GPM (45 LPM)
Maximum:	18 GPM (68 LPM)
MAX. PRESSURE	3,500 PSI (242 BAR)
MAX. BACK PRESSURE	150 PSI (10 BAR)

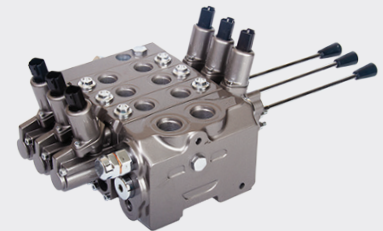


SECTIONAL LOAD SENSE VALVES

MUNCIE POWER PRODUCTS
L125 SERIES

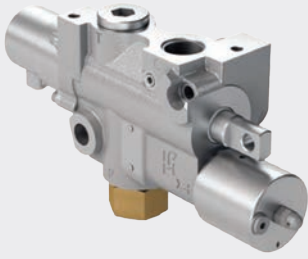
- Closed-centered, post-compensated with flow sharing sections that have local compensators, creating an efficient hydraulic control valve
- Offers both manual and electrohydraulic control options

FLOW RATE	
Nominal:	33 GPM (125 LPM)
Maximum:	
Inlet:	40 GPM (150 LPM)
Work Section:	26 GPM (100 LPM)
MAX. PRESSURE	5,075 PSI (350 BAR)
STANDBY PRESSURE	200 PSI (14 BAR)
MAX. BACK PRESSURE	145 PSI (10 BAR)



TIPPER VALVES

INTERPUMP HYDRAULICS D242 SERIES



- Single and dual pressure, pneumatic controlled valve
- Incorporated mechanical stroke limiter
- SAE porting
- Dual pressure setting, pneumatic or manually controlled
- Fits heavy-duty vehicles and prime movers

MAX. FLOW RATE 63.41 GPM (240 LPM)

MAX. WORKING PRESSURE 5,076 PSI (350 BAR)

APPROX. WEIGHT 18.08 lbs. (8.2 Kg.)

INTERPUMP HYDRAULICS DM50 SERIES



- Mechanical or electric controlled
- Relief valve in 4 standard settings
- BSP porting
- Incorporated mechanical stroke limiter
- Fits light-duty vehicles, ideal for landscapers or municipal road repair dump bodies

MAX. FLOW RATE 10.57 GPM (40 LPM)

MAX. WORKING PRESSURE 3,626 PSI (250 BAR)

APPROX. WEIGHT 7.87 lbs. (3.57 Kg.)

INTERPUMP HYDRAULICS DM70 SERIES



- Mechanical or pneumatic controlled
- Relief valve in 4 standard settings
- BSPP porting
- Incorporated mechanical stroke limiter
- Fits medium-duty vehicles

MAX. FLOW RATE 15.85 GPM (60 LPM)

MAX. WORKING PRESSURE 5,076 PSI (350 BAR)

APPROX. WEIGHT 8.16 lbs. (3.7 Kg.)

INTERPUMP HYDRAULICS DM140 SERIES



- Pneumatic controlled
- Relief valve in 4 standard settings
- BSPP or JIC male porting
- Incorporated mechanical stroke limiter
- Fits heavy-duty vehicles

MAX. FLOW RATE 37 GPM (140 LPM)

MAX. WORKING PRESSURE 5,076 PSI (350 BAR)

APPROX. WEIGHT 11.24 lbs. (5.1 Kg.)

INTERPUMP HYDRAULICS

S160 SERIES

- Pneumatic controlled
- Incorporated pneumatic stroke limiter, reduced installation time
- Hose burst safety system included and single high pressure line for increased safety
- BSPP porting

MAX. FLOW RATE	39.63 GPM (150 LPM)
MAX. WORKING PRESSURE	3,626 PSI (250 BAR)
APPROX. WEIGHT	14.77 lbs. (6.7 Kg.)



ACCESSORY VALVES

MUNCIE POWER PRODUCTS

MSV SERIES SELECTOR VALVE

- A 2-position, 2-way selector valve providing a simple means of directing oil flow into 2 separate hydraulic circuits
- Can be used as a low-pressure bypass back to the reservoir
- Shifter controls are universal and fit either end of spool
- Interchangeable integral mounting flange with existing competitor products

FLOW RATE	Nominal:	60 GPM (227 LPM)
	Maximum:	90 GPM (341 LPM)
MAX. PRESSURE	Nominal:	2,000 PSI (138 BAR) [NPT]
	Maximum:	3,000 PSI (207 BAR) [Straight Thread]
	APPROX. WEIGHT	11.6 lbs. (5.3 Kg.)



MUNCIE POWER PRODUCTS

PILOT OPERATED RELIEF VALVES

- Provides constant, maximum system pressure protection regardless of widely varying flow rates
- Can be in-line or line mounted

FLOW RATE	Model RV-30:	30 GPM (114 LPM)
	Model RV-60:	60 GPM (227 LPM)
PRESSURE RANGE	Model RV-30:	300–3,000 PSI (21–207 BAR)
	Model RV-60:	300–3,000 PSI (21–207 BAR)
APPROX. WEIGHT	Model RV-30:	0.96 lbs. (0.4 Kg.)
	Model RV-60:	1.83 lbs. (0.8 Kg.)



MUNCIE POWER PRODUCTS

PFD-30 PRIORITY FLOW DIVIDER

- Provides simultaneous flow for 2 separate hydraulic circuits from a single pump
- Allows a portion of the system fluid to be directed to a function that should have priority over other functions
- Compact size

FLOW RATE	30 GPM (114 LPM)
MAX. PRESSURE	3,000 PSI (207 BAR)
APPROX. WEIGHT	8 lbs. (3.6 Kg.)



RESERVOIRS | FILTERS

UPRIGHT RESERVOIRS

MUNCIE POWER PRODUCTS

METAL UPRIGHT



- Designed for hardworking, continuous-duty applications
- Available in aluminum for lighter weight or steel for higher heat applications
- Easy installation and accessibility

VOLUMES

Aluminum (3 sizes):	50–100 gal. (189.3–379 L)
Steel (4 sizes):	50–100 gal. (189.3–379 L)

DIMENSIONS

Aluminum:	Varies
Steel:	Varies

APPROX. WEIGHT

Aluminum:	77–130 lbs. (34.9–59 Kg.)
Steel:	150–248 lbs. (56–92.6 Kg.)

INTERPUMP HYDRAULICS

EUROPEAN STEEL ST RN



- Designed for on- and off-highway work trucks
- Tipper valve direct mount capabilities

VOLUMES

4 sizes:	26.42–52.84 gal. (100–200 L)
----------	------------------------------

DIMENSIONS

Height × Width × Length	25.12 × 10.94 × 25.20– 33.07 × 42.68 × 51.18 in. (638 × 278 × 640– 840 × 1,084 × 1,300 mm)
-------------------------	---

APPROX. WEIGHT

46.3–108 lbs. (21–49 Kg.)

MUNCIE POWER PRODUCTS

POLYETHYLENE



- Designed to reduce weight, to eliminate risk of contamination from corrosion, to improve longevity, and to allow for quick and easy installation
- Lightweight for short-duty applications where heat buildup is not an issue

VOLUMES

2 sizes:	50–75 gal. (189.3–283.9 L)
----------	----------------------------

DIMENSIONS

Varies

APPROX. WEIGHT

67–97 lbs. (30.4–44 Kg.)

SIDE MOUNT RESERVOIRS

MUNCIE POWER PRODUCTS STEEL BOX

- Offered in a large variety of sizes from compact to mid-size
- Features multiple return ports, optional tank-top filter, and sensors
- Designed for continuous-duty applications that generate significant amounts of heat

VOLUMES 7 sizes:	7–40 gal. (26.5–151.4 L)
DIMENSIONS	Varies
APPROX. WEIGHT	40–126 lbs. (18.1–57.2 Kg.)



SADDLE MOUNT RESERVOIRS

MUNCIE POWER PRODUCTS METAL ROUND

- Designed for hardworking, continuous-duty applications
- Available in aluminum for lighter weight or steel for higher heat applications
- Offered in a wide variety of sizes
- Rear ports available

VOLUMES Aluminum (5 sizes): Steel (5 sizes):	25–100 gal. (94.6–379 L) 25–100 gal. (94.6–379 L)
DIMENSIONS Aluminum: Steel:	24 in. dia. x 15 in.–51 in. long 24 in. dia. x 15 in.–51 in. long
APPROX. WEIGHT Aluminum: Steel:	73–180 lbs. (33.1–81.7 Kg.) 101–226 lbs. (45.8–102.5 Kg.)



INTERPUMP HYDRAULICS

EUROPEAN STEEL SP LA/LL

- Designed for on- and off-highway work trucks
- Aluminum option available for lighter weight
- Tipper valve direct mount capabilities

VOLUMES 9 sizes:	23.78–66.05 gal. (90–250 L)
DIMENSIONS	Varies
APPROX. WEIGHT Aluminum: Steel:	17.6–55.1 lbs. (8–25 Kg.) 41.9–99.2 lbs. (15.6–45 Kg.)



SADDLE MOUNT RESERVOIRS

(continued)

MUNCIE POWER PRODUCTS

POLYETHYLENE BOX



- Requires only 2 metal straps and saddles for easy installation on the chassis frame rail
- Preferred in intermittent-duty applications where heat buildup is not an issue, but accessibility is required

VOLUMES

3 sizes:

35–50 gal. (135.6–189.3 L)

DIMENSIONS

Varies

APPROX. WEIGHT

30–55 lbs. (13.6–35 Kg.)

UNDER CHASSIS RESERVOIRS

INTERPUMP HYDRAULICS

EUROPEAN STEEL SB PF



- Designed for on- and off-highway work trucks
- Tipper valve direct mount capabilities
- Ideal for dump trucks, fits into protected areas

VOLUMES

3 sizes:

5.55–15.85 gal. (21–60 L)

DIMENSIONS

Varies

APPROX. WEIGHT

23.4–41.9 lbs. (10.6–19 Kg.)

HYDRAULIC OIL FILTERS

MUNCIE POWER PRODUCTS RETURN LINE

- Available in 6 sizes with high-pressure options
- An effective and economical means of maintaining system cleanliness
- Industry standard elements allow for easy maintenance
- Optional filter indicator gauge to tell when filter element needs replaced

RATING	10–25 microns (10–25 µm)
MAX. FLOW RATE	24–100 GPM (90.9–378.5 LPM)
MEDIA TYPE	Microglass or Paper



MUNCIE POWER PRODUCTS TANK-TOP RETURN LINE

- Available in 4 sizes
- Optional filter indicator gauge to tell when filter element needs replaced

RATING	10 microns (10 µm)
MAX. FLOW RATE	24–100 GPM (90.9–378.5 LPM)
MEDIA TYPE	Microglass or Paper

MUNCIE POWER PRODUCTS HIGH PRESSURE

- Available in 2 sizes
- Filters out contamination before it reaches a valve or scores a cylinder
- Often required to meet the demands of high-horsepower, continuous-duty applications

RATING	10 microns (10 µm)
MAX. FLOW RATE	24–100 GPM (90.9–378.5 LPM)
MEDIA TYPE	Microglass or Paper



WET LINE KITS

DUMP PUMP WET LINE KITS

- Wide variety of applicable PTOs, pumps, and control consoles
- Hose and fittings assemblies available in numerous configurations
- A variety of reservoir sizes, configurations, and materials are available
- For more detailed component selection for your specific application, call our customer service team

(See individual product pages for specifications.)



POWER TAKE-OFFS

A20 SERIES

F22 SERIES

TG SERIES

REAR MOUNT

RESERVOIRS

ALUMINUM

STEEL

POLYETHYLENE

EUROPEAN STYLE

PUMPS

S SERIES HOIST

E SERIES DUMP

FLUID CONVEYANCE

SUCTION

RETURN

PRESSURE

FITTINGS/ADAPTERS

TIPPER VALVE WET LINE KITS

- Tipper valves—also known as dual-position pressure relief valves—can protect your equipment when using dual applications
- Heavy-duty gear pump rated for long or continuous-duty cycles
- For more assistance, call our customer service team

(See individual product pages for specifications.)

POWER TAKE-OFFS

A20 SERIES

F22 SERIES

TG SERIES

REAR MOUNT

RESERVOIRS

ALUMINUM

STEEL

POLYETHYLENE

EUROPEAN STYLE

FLUID CONVEYANCE

SUCTION

RETURN

PRESSURE

FITTINGS/ADAPTERS



PUMPS

GEAR PUMPS

OPTIMUM PUMPS

PISTON PUMPS

TIPPER VALVES

DM50 SERIES

DM70 SERIES

DM140 SERIES

S160 SERIES

D242 SERIES

FLUID CONVEYANCE

HYDRAULIC HOSE & FITTINGS

INTERPUMP FLUID SOLUTIONS

BRAIDED HOSE

MARATHON 2SC

- Part Number: BHEYM2K
- Specification: EN857 2SC
- Special Features: Tested to 1,000,000 impulse cycles; 5,075 PSI max. working pressure in size -08 (½"); 3,625 PSI max. working pressure in size -16 (1")
- Fittings: One-piece G Series

MAX. WORKING PRESSURE 6,525–3,625 PSI (450–250 BAR)

REINFORCEMENT TYPE 2 High-tensile Steel Wire Braids

OPERATING TEMPS -40° F to +248° F
(-40° C to +120° C) Continuous

AVAILABLE SIZES -04 through -16 (¼"–1")



LOGLIFE 1SC

- Part Number: BHES01K
- Specification: EN857 1SC
- Special Feature: Smooth outer cover
- Fittings: One-piece G Series

MAX. WORKING PRESSURE 3,625–1,088 PSI (250–75 BAR)

REINFORCEMENT TYPE 1 High-tensile Steel Wire Braid

OPERATING TEMPS -40° F to +248° F
(-40° C to +120° C) Continuous

AVAILABLE SIZES -04 through -32 (¼"–2")



HYPRESS 2SC

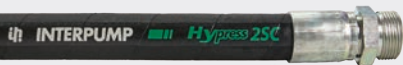
- Part Number: BFEY02K
- Specification: EN 857 2SC/SAE 100R16
- Special Features: Tested to 400,000 impulse cycles (2x EN Standard)
- Fittings: One-piece G Series

MAX. WORKING PRESSURE 5,800–2,393 PSI (400–165 BAR)

REINFORCEMENT TYPE 2 High-tensile Steel Wire Braids

OPERATING TEMPS -40° F to +248° F
(-40° C to +120° C) Continuous

AVAILABLE SIZES -04 through -16 (¼"–1")



HYPRESS R17

- Part Number: BFSM017
- Specification: SAE 100R17
- Special Features: Isobaric hose line; 3,045 PSI max. working pressure for all sizes
- Fittings: One-piece G Series

MAX. WORKING PRESSURE 3,045 PSI (210 BAR) in all sizes

REINFORCEMENT TYPE 1 High-tensile Steel Wire Braid in sizes -04 through -08 (¼"–½")
2 High-tensile Steel Wire Braids in sizes -10 through -16 (⅝"–1")

OPERATING TEMPS -40° F to +248° F
(-40° C to +120° C) Continuous

AVAILABLE SIZES -04 through -16 (¼"–1")



INTERPUMP FLUID SOLUTIONS

BRAIDED FITTINGS

MALE PIPE

PART NUMBER	HOSE SIZE	THREAD SIZE
0370G04-04	-04	-04
0370G06-06	-06	-06
0370G08-08	-08	-08
0370G12-12	-12	-12
0370G16-16	-16	-16



FEMALE JIC

PART NUMBER	HOSE SIZE	THREAD SIZE
0911G04-04	-04	-04
0911G06-06	-06	-06
0911G08-08	-08	-08
0911G12-12	-12	-12
0911G16-16	-16	-16



FEMALE JIC 90

PART NUMBER	HOSE SIZE	THREAD SIZE
0951G04-04	-04	-04
0951G06-06	-06	-06
0951G08-08	-08	-08
0951G12-12	-12	-12
0951G16-16	-16	-16



FEMALE ORFS

PART NUMBER	HOSE SIZE	THREAD SIZE
S05TG04-06	-04	-04
S05TG06-09	-06	-06
S05TG08-11	-08	-08
S05TG12-14	-12	-12
S05TG16-15	-16	-16



SPIRAL HOSE

HYSO-FLEX 3K WS



- Part Number: TISM021
- Specification: ISO 18752/CC
- Special Features/Approvals: MSHA approved outer cover; half-bend radius compared to traditional spiral hose
- Fittings: One-piece N Series

MAX. WORKING PRESSURE 3,045 PSI (210 BAR) in all sizes

REINFORCEMENT TYPE 4 High-tensile Steel Wire Spirals in size -20 (¾" and 1")

OPERATING TEMPS -40° F to +248° F (-40° C to +120° C) Continuous

AVAILABLE SIZE -20 (1¼")

HYSO-FLEX 4K WS



- Part Number: TISM028
- Specification: ISO 18752/CC Exceeds SAE 100R12
- Special Features/Approvals: MSHA approved outer cover; half-bend radius compared to traditional spiral hose
- Fittings: One-piece N Series

MAX. WORKING PRESSURE 4,060 PSI (280 BAR) in all sizes

REINFORCEMENT TYPE 4 High-tensile Steel Wire Spirals

OPERATING TEMPS -40° F to +248° F (-40° C to +120° C) Continuous

AVAILABLE SIZES -12 through -24 (¾"-1½")

HYSO-FLEX 5K WS



- Part Number: TISM035
- Specification: ISO 18752/CC Exceeds SAE 100R13
- Special Features/Approvals: MSHA approved outer cover; half-bend radius compared to traditional spiral hose
- Fittings: One-piece N Series

MAX. WORKING PRESSURE 5,075 PSI (350 BAR) in all sizes

REINFORCEMENT TYPE 4 High-tensile Steel Wire Spirals

OPERATING TEMPS -40° F to +248° F (-40° C to +120° C) Continuous

AVAILABLE SIZES -12 through -24 (¾"-1½")

HYSO-FLEX 6K WS



- Part Number: TISM042
- Specification: ISO 18752/CC Exceeds SAE 100R15
- Special Features/Approvals: MSHA approved outer cover; half-bend radius compared to traditional spiral hose
- Fittings: One-piece N Series

MAX. WORKING PRESSURE 6,090 PSI (420 BAR) in all sizes

REINFORCEMENT TYPE 4 High-tensile Steel Wire Spirals in sizes -12 and -16 (¾" and 1")
6 High-tensile Steel Wire Spirals in sizes -20 and -24 (1¼"-1½")

OPERATING TEMPS -40° F to +248° F (-40° C to +120° C) Continuous

AVAILABLE SIZES -12 through -24 (¾"-1½")

INTERPUMP FLUID SOLUTIONS

SPIRAL FITTINGS

CODE 61 FLANGE

PART NUMBER	HOSE SIZE	THREAD SIZE
1250N12Q12	-12	-12
1250N16Q16	-16	-16
1250N20Q20	-20	-20
1250N24Q24	-24	-24

CODE 61 FLANGE 90

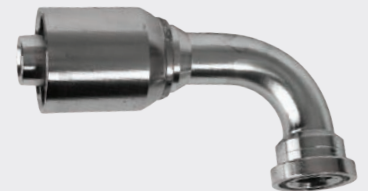
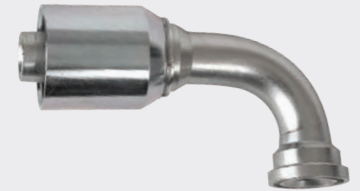
PART NUMBER	HOSE SIZE	THREAD SIZE
1050N12Q12	-12	-12
1050N16Q16	-16	-16
1050N20Q20	-20	-20
1050N24Q24	-24	-24

CODE 62 FLANGE

PART NUMBER	HOSE SIZE	THREAD SIZE
1300N12Q12	-12	-12
1300N16Q16	-16	-16
1300N20Q20	-20	-20
1300N24Q24	-24	-24

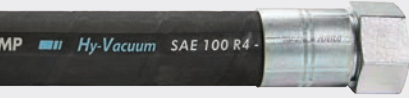
CODE 62 FLANGE 90

PART NUMBER	HOSE SIZE	THREAD SIZE
1100N12Q12	-12	-12
1100N16Q16	-16	-16
1100N20Q20	-20	-20
1100N24Q24	-24	-24



INLET/SUCTION HOSE

HY-VACUUM R4

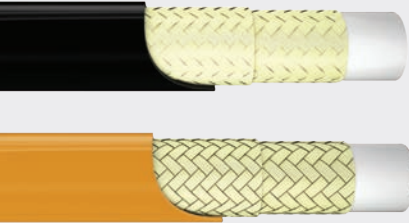


- Part Number: TFS0004
- Specification: SAE 100R4
- For use in inlet and suction applications where vacuum is present

MAX. WORKING PRESSURE	305–58 PSI (21–4 BAR)
REINFORCEMENT TYPE	2 Textile Braids + 1 Steel Helical Wire
OPERATING TEMPS	-40° F to +212° F (-40° C to +100° C)
AVAILABLE SIZES	-12 through -48 (¾"–3")

SPECIALTY & APPLICATION HOSE

THERMOPLASTIC



- Part Numbers: TFS0007/BFS0NC7, TFS0008/TFS0NC8, and TFS0018/BFSNC18
- TFS0007/BFS0NC7: Light, flexible, and abrasion resistant; pinpricked cover
- TFS0008/TFS0NC8: Lightweight slim line construction for compact installation and flexibility; steel braid offers low volumetric expansion and optimum in length characteristics; abrasion resistant
- TFS0018/BFSNC18: Isobaric hose line; better flexibility and kink-resistance compared to SAE 100R7

MAX. WORKING PRESSURE	TFS0007/BFS0NC7: 3,045–1,015 PSI (210–70 BAR) TFS0008/TFS0NC8: 5,220–1,378 (360–95 BAR) TFS0018/BFSNC18: 3,000 (210 BAR)
REINFORCEMENT TYPE	TFS0007/BFS0NC7: 1 or 2 Braids of Synthetic Fiber TFS0008/TFS0NC8: 1 or 2 Braids of Aramid Fiber TFS0018/BFSNC18: 1 or 2 Braids of Synthetic Fiber
OPERATING TEMPS	TFS0007/BFS0NC7 AND TFS0008/TFS0NC8: -40° F to +212° F (-40° C to +100° C); -40° F to +158° F (-40° C to +70° C for water based fluids TFS0018/BFSNC18: -40° F to +212° F (-40° C to +100° C); -40° F to +158° F (-55° C to +70° C for water based fluids
AVAILABLE SIZES	TFS0007/BFS0NC7 AND TFS0008/TFS0NC8: -02 through -16 TFS0018/BFSNC18: -03 through -10

P.T.F.E.



- Part Number: TF000T1
- Smooth internal P.T.F.E. thin wall hose
- Applicable Specs: SAE 100 R14
- Compatible with standard inserts

MAX. WORKING PRESSURE	2,900–943 PSI (200–65 BAR)
REINFORCEMENT TYPE	1 high-tensile stainless steel (AISI 304) wire braid
OPERATING TEMPS	-94° F to +500° F (-70° C to +260° C)
AVAILABLE SIZES	-03 through -16

LOGLIFT 1SC



- Part Number: BHL201K
- No-skive hose, high abrasion resistance
- Pressure rating exceeds standards
- Approved and released for lift truck applications
- High elasticity and flexibility at small bend radius
- Synthetic rubber internal hose, extruded whole without joints of uniform thickness

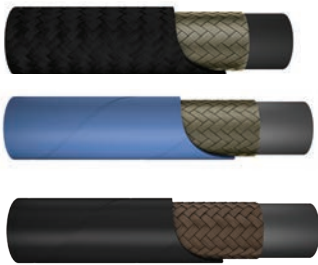
MAX. WORKING PRESSURE	1SC: 3,625–1,595 PSI (250–110 BAR)
REINFORCEMENT TYPE	1SC: 1 high-tensile steel wire braid
OPERATING TEMPS	-40° F to +248° F (-40° C to +120° C) continuous; -40° F to +275° F (-40° C to +135° C) intermittent -40° F to +158° F (-40° C to +70° C) for water based fluids; +32° F to +158° F (0° C to +70° C) for water
AVAILABLE SIZES	-04 through -08

INTERPUMP FLUID SOLUTIONS
TREATHLON 3SC

- Part Number: THE0T3K
- Compact design saves on space and weight
- No-skive crimping solution: Impulse tested to 120% of the working pressure
- NBR inner layer allows wide compatibility with hydraulic fluids

SPECIFICATION	Exceeds 4SP standard
MAX. WORKING PRESSURE	7,250–4,568 PSI (500–315 BAR)
AVAILABLE SIZES	-06 through -16

INTERPUMP FLUID SOLUTIONS
OTHER PRODUCT OFFERINGS



D.O.T. TRUCK HOSE



**HOSE ASSEMBLY/
KITTING**



LOW PRESSURE



**HOSE ABRASION
PROTECTION**



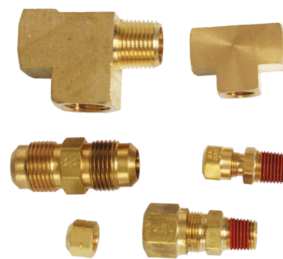
CRIMPERS



ADAPTERS



QUICK DISCONNECTS



BRASS FITTINGS

CONSOLES & CONTROLS

CONTROL CONSOLES — AIR

MUNCIE POWER PRODUCTS ASC2 SERIES



- LED PTO indicator light for easy dash mounting
- Push-to-connect air fittings allow easy installation for the air controller (standard in valve and air installation kit)
- Consoles have a black powder coat finish
- Some models of consoles provide a large mounting surface for extra switches, lights, valves, and more
- Symmetrical design of consoles on most models provides for installation on either side of the driver's seat with options for angle mount on the floor or dash

AIR VALVES

Automatic
Manual Kick Out,
Lower Position

PTO PUMP CONTROL Available (6 styles):

Auto KO, Center Detent
Man KO, Center Detent
Auto KO, Center & Lower Detent
Man KO, Center & Lower Detent
Auto KO, 3 Pos. Detent
Man KO, 3 Pos. Detent

CONSOLES

Width × Length × Height
Available (6 styles):

3 in. × 3 in. × 4 in. Square
3 in. × 3 in. × 8 in. Square
3 in. × 3 in. × 13 in. Square
3 in. × 10 in. × 4 in. Rectangular
3 in. × 10 in. × 8 in. Rectangular
3 in. × 10 in. × 13 in.
Rectangular
5 in. × 5 in. × 12 in. Sq.,
Cent. Faceplate
5 in. × 5 in. × 12 in. Sq.,
Offset Faceplate
Angle Mount
No Console (Dash Mount)

PNEUMATIC CONTROLS

INTERPUMP HYDRAULICS CP2000 SERIES



Without PTO
Control

With PTO
Control

- Controls to pilot all pneumatically actuated components
- Various options available such as PTO switch, ON/OFF light, automatic PTO disengage, and 2- or 3-position detent

MAX. WORKING PRESSURE 174 PSI (12 BAR)

OPERATING TEMPS -40° F to +176° F (-40° C to + 80° C)

OPERATING VOLTAGE 24 V DC

INTERPUMP HYDRAULICS
CP4000 SERIES

- Controls to pilot all pneumatically actuated components
- Various options available such as PTO switch, ON/OFF light, automatic PTO disengage, and 2- or 3-position detent

MAX. WORKING PRESSURE	145 PSI (10 BAR)
OPERATING TEMPS	-40° F to +176° F (-40° C to + 80° C)
WORKING MEDIUM	Air

INTERPUMP HYDRAULICS
PM SERIES

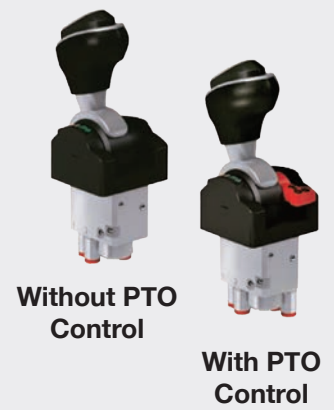
- Pneumatic actuated controls
- Offers separate auxiliary sections both push/pull or twist ON/OFF to control PTO tailgate, pony trailer, or secondary hydraulic circuits

WORKING PRESSURE	MAX. 145 PSI / MIN. 73 PSI (MAX. 10 BAR / MIN. 5 BAR)
OPERATING TEMPS	-22° F to +176° F (-30° C to + 80° C)
WORKING MEDIUM	Air

INTERPUMP HYDRAULICS
PSC SERIES

- Pneumatic actuated control
- Ideal for any application with limited space availability or simple ON/OFF control

MAX. WORKING PRESSURE	174 PSI (12 BAR)
OPERATING TEMPS	-40° F to +176° F (-40° C to + 80° C)
CONTACTS	Normally open



MUNCIE POWER PRODUCTS
CABLE CONTROLS

- Attachment kits for popular valve models, ensuring smooth action while keeping contaminants out
- 3 series of heavy-load cables with rugged, no moving parts
- Works with air, cable, or solenoid shift stack valves
- May be banked together into a common console





TECHNOLOGY SOLUTIONS

ELECTRONIC SPREADER SYSTEMS

MUNCIE POWER PRODUCTS

Omni-System® ESP 3016/17



- Upgraded controller with digital readout, simple setup, and optional adjustable RAM mounting system
- Features groundspeed control and the ability to control the spinner, auger/conveyor, and optional liquid setup (hydraulic and electric)
- Fits Class 5 to Class 8 chassis including tailgate, V-body, muni-body, and spreader systems
- Perfect for new or retrofit installs and suitable for all spreader setups

MAX. FLOW RATE	
Auger Flow (Proportional)	40 GPM (151.4 LPM)
Spinner Flow (Proportional)	0–10 GPM (0–38 LPM)
Liquid Flow, Optional (Proportional)	0–8 GPM (0–30 LPM)
	0–6 GPM (0–23 LPM)

MAX. ADJUSTABLE RELIEF 3,000 PSI (207 BAR)

MAX. SYSTEM PRESSURE 3,000 PSI (207 BAR)
Factory Setting 1,800 PSI (124 BAR)

MUNCIE POWER PRODUCTS

Omni-System® ESP 3020



- Includes an integrated hoist circuit, simple setup, and has an easy-to-use controller
- Features groundspeed control to allow for salt conservation and for the driver to stay focused on the road
- Fits Class 5 chassis including tailgate, V-body, muni-body, and spreader systems

MAX. FLOW RATE	
Auger Flow (Proportional)	20 GPM (75.7 LPM)
Spinner Flow (Proportional)	13 GPM (49 LPM)
Hoist Flow (Proportional)	5 GPM (19 LPM)
	6 GPM (23 LPM)

HOIST DOWNSIDE RELIEF 950 PSI (66 BAR)

MAX. ADJUSTABLE RELIEF 3,000 PSI (207 BAR)

MAX. SYSTEM PRESSURE 3,000 PSI (207 BAR)
Factory setting 2,500 PSI (172 BAR)

MUNCIE POWER PRODUCTS

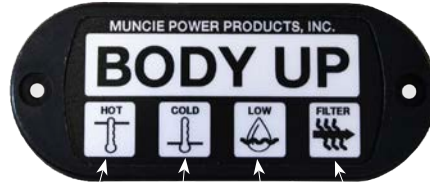
HYDRAULIC INDICATOR DISPLAYS & SWITCHES



Body Up Switch



Filter Bypass

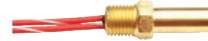


Hot Oil Cold Oil Low Oil Filter Bypass

MSD2



Hot Oil/Low Oil



Cold Oil

MUNCIE POWER PRODUCTS

MUNCIE START®

The Muncie Start is an electronically controlled, modulated clutch engagement system that eliminates torque spikes through the PTO, truck drivetrain, and mounted auxiliary equipment upon startup for high-inertia loads. Clutch shift PTOs that can utilize the Muncie Start are the A20 Series, CS40/CS41 Series, F20 Series, F22 Series, and FR6Q Series.



MUNCIE POWER PRODUCTS

SPD-2000 SYSTEM PROTECTION DEVICE

The SPD-2000 System Protection Device offers over-speed protection and interface for a wide range of interlock devices. Accepting both RPM and MPH inputs, the SPD-2000 allows for additional safety switch inputs such as pressure switches, neutral switches, oil levels, temperature switches, and others. The SPD-2000 can be mounted in the cab or engine compartments. Use this system protection device with clutch shift PTOs, clutch pumps, the Power-Miser, and the Powr-Pro.



MUNCIE POWER PRODUCTS

DC POWER PACKS

- Steel reservoirs come in 6 sizes and used for higher heat applications
- Translucent, polyethylene reservoirs come in 5 sizes
- Large selection of directional valve choices
- Horizontal and vertical mounting capabilities
- Provides hydraulic power for light-duty applications
- 60-micron suction line strainer and 40-micron breather cap standard
- Generally used on single-axle chassis where the PTO aperture is inaccessible or not available
- A corded, push button remote control is standard



CUSTOMER RESOURCES

Service

We continuously invest in building industry-leading customer focused teams including customer service, sales, field technicians, warranty, and other team members who work directly with our customers.



Quality

We ensure all of our products are manufactured and assembled with the utmost care and at the highest quality. We have instilled a rigorous quality inspection program, an extensive warranty program, and a process that allow focused attention to detail to create a long-lasting product.



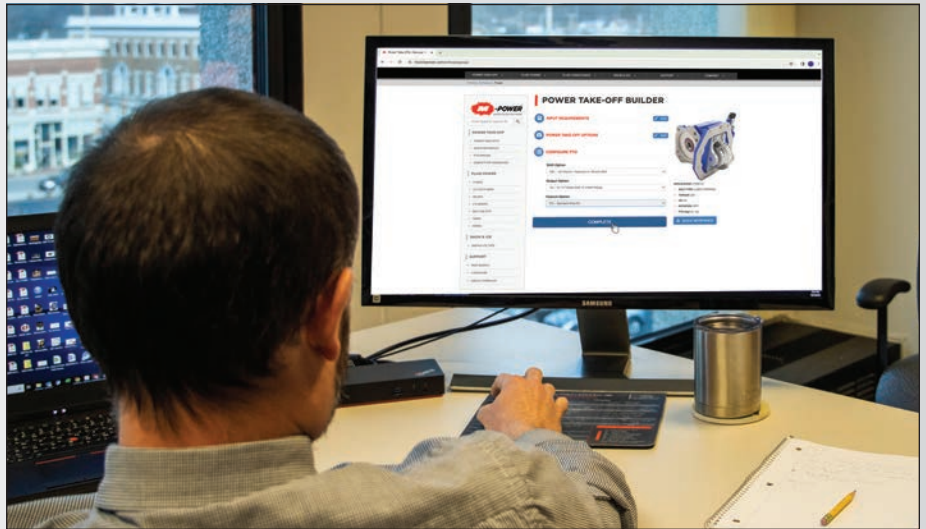
Innovation

Our continued investment in our engineering team has led to new innovations including patented gear rattle abatement for quiet PTOs, the Muncie Start® to eliminate torque spikes, easy to install wire harnesses, easily adjustable PTO flanges, and numerous PTOs designed to fit new transmissions.



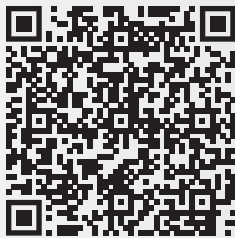
M-Power

The M-Power Specification Software allows you to easily configure a PTO, pump, and more; as well as crossover a competitor's product. Spec'ing out a product gives you the ability to view pricing and save your configuration, along with other options—all on your own time.



Training

We offer several training options to help you become more knowledgeable. Our training opportunities include an online portal, in person Product and Application School classes, and custom training specific for your team.



Useful Formulas

To determine your product's specifications, you can take advantage of our easy to use formulas online to help calculate PTO output speed, RPM, reservoir volume, torque, and more.



For the most up-to-date product literature, parts breakdowns, and more resources, visit us online



MUNCIEPOWER.COM

LOCATIONS

Indiana

Muncie Facility

201 East Jackson Street
Muncie, IN 47305
Phone: 765-284-7721
Toll Free: 800-367-7867
Fax: 765-284-6991

Yorktown Facility – Production, Assembly, & Distribution Center

2400 North Priority Way
Yorktown, IN 47396
Phone: 765-284-7721
Fax: 765-284-6991

Oklahoma

Mohawk Facility

1555 East Mohawk Boulevard
Tulsa, OK 74106
Phone: 918-838-0900
Fax: 765-284-6991

Pine Street Facility – Manufacturing & Distribution Center

7217 East Pine Street
Tulsa, OK 74115
Phone: 918-838-0900
Fax: 765-284-6991

California

Visalia Distribution Center

7247 West Goshen, Suite B
Visalia, CA 93291
Phone 559-651-1401
Fax: 559-651-1364

Georgia

Atlanta Distribution Center

1900 Cobb International Boulevard, Suite F
Kennesaw, GA 30152
Phone: 770-499-1847
Fax: 770-499-8354

Pennsylvania

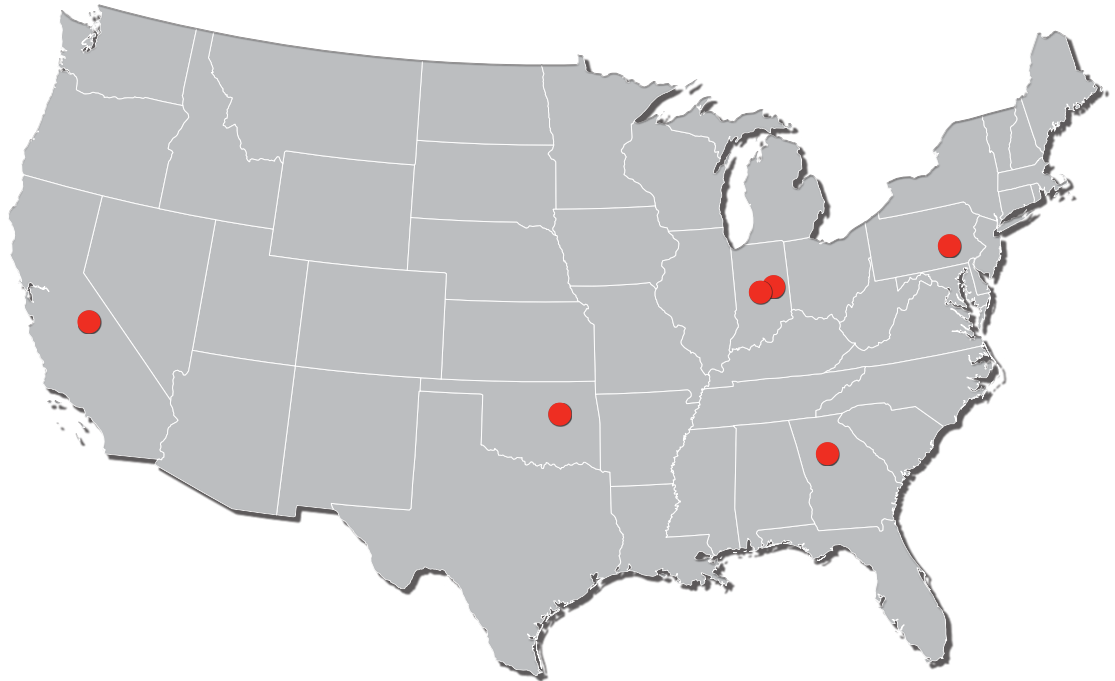
Philadelphia Pump & Distribution Center

2570 Industry Lane
Norristown, PA 19403
Phone: 610-539-4430
Toll Free: 800-610-4651
Fax: 610-539-4461

On the map below, you can view our various locations across the United States, including our distribution and pump center.

Muncie Power has a large network of independent distribution partners with stocked parts ready to support numerous warehouse locations across the United States.

Use the QR code to find a trusted distribution partner near you.



Yorktown Facility



Mohawk Facility (March 23, 2024)



**Muncie[®]
Power
Products**



201 EAST JACKSON STREET | MUNCIE, INDIANA 47305
800-367-7867 | WWW.MUNCIEPOWER.COM