

**PARTS**  
**FOR HOLMES PROTECH SYSTEMS**

**Holmes International Inc.**  
**Newbern, Tennessee**

## Parts for Holmes Protech Systems

## CONTENTS

	Page
Figure 1. DFT 200 Wheel Lift Main Parts _____	4
Figure 2. DFT 200 Wheel Lift Main Parts (Continued) _____	6
Figure 3. DFT 200 Wheel Lift Hydraulic Parts _____	8
Figure 4. 1102 Wrecker For 460B Body, Parts and Hydraulic Fittings _____	10
Figure 5. 3105B Wrecker Main Parts _____	12
Figure 6. 3105B Wrecker Hydraulic Parts with Related DFT 200 Wheel Lift Control Valve Hydraulic Components _____	14
Figure 7. 3210 Wrecker Main Parts _____	16
Figure 8. 3210 Wrecker Hydraulic Parts with Related DFT 200 Wheel Lift Control Valve _____	18
Figure 9. Control Kit (GR440) For PT10H System (For Use with Wheel Lift w/o Wrecker on 460B Body) _____	20
Figure 10. Control Kit (GR440) & (GV133) For 1102 System (For Use with Wheel Lift and 1102 Wrecker on 460B Body) _____	22
Figure 11. Control Kit (HG12) For PT3105B System (For Use with Wheel Lift and 3105B Wrecker on 460B Body) Control Kit (HG44) for PT 3210 System (For Use with Wheel Lift and 3210 Wrecker on 460B Body) _____	24
Figure 12. 460B Body Parts _____	26
Figure 13. Winch Assembly GV73 with Motor for PT1102 System (For Use with Wheel Lift and 1102 Wrecker on 460B Body) _____	28
Figure 14. Transmission with Motor (GS32B) for 3105 Wrecker _____	30
Figure 15. Transmission with Motor (GO103B R.H. - GO106B L.H. for 3210 Wrecker) _____	32

# Parts for Protech Systems

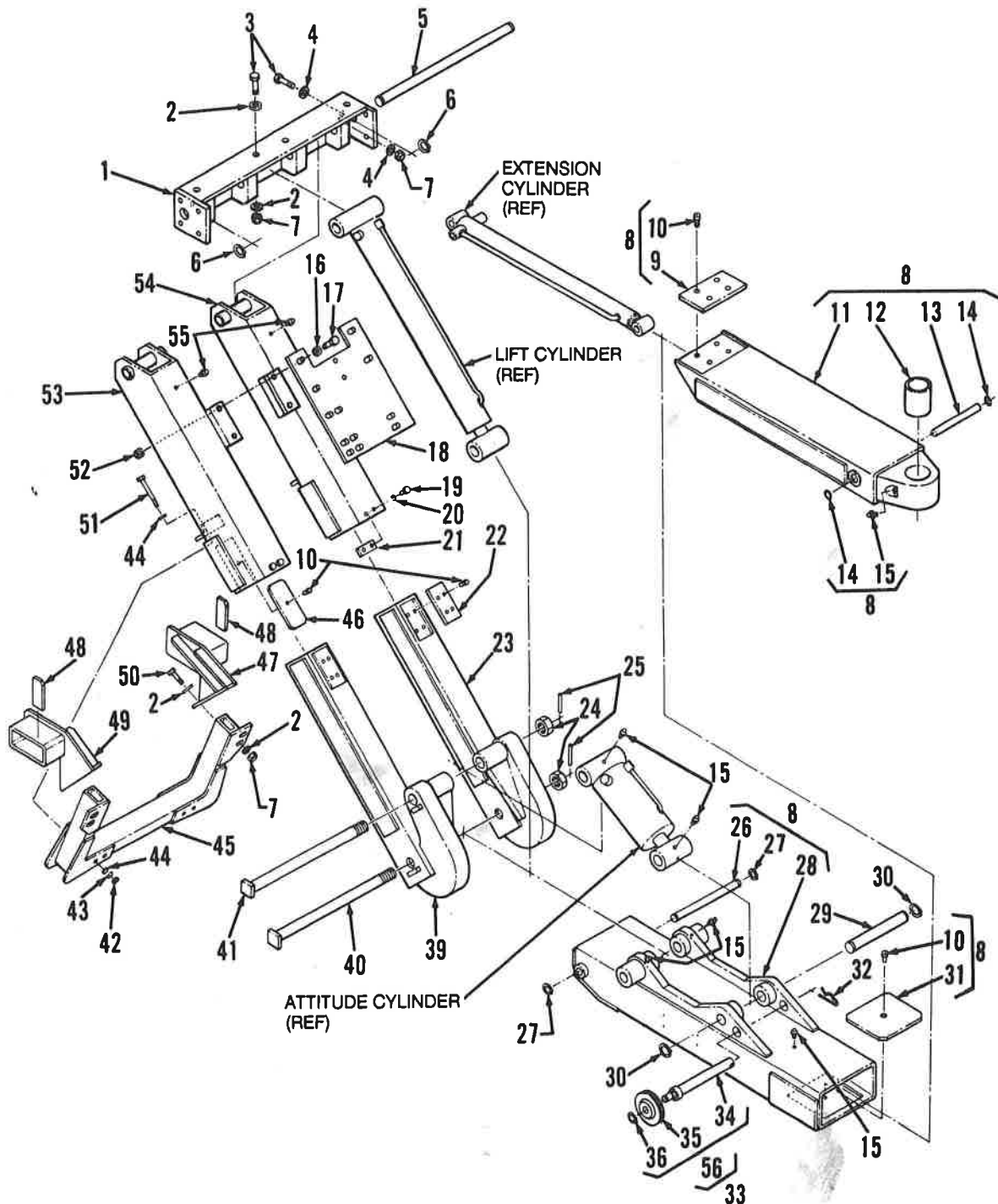


Figure 1. DFT 200 Wheel Lift Main Parts.

## Parts for Protech Systems

Parts List for Figure 1.  
DFT 200 Wheel Lift, Main Parts  
(Installed on 460B Body)

ID NO.	PART NO.	DESCRIPTION	ID NO.	PART NO.	DESCRIPTION
1	GR40	DIAGONAL AND LIFT CYLINDER UPPER ANCHOR	30	GB142	RING, RETAINING, EXTERNAL, 3/4"
2	RR859	WASHER, HARDENED, 3/4"	31	GR30	BEARING, SLIDE, OUTER BOOM
3	DE485	CAP SCREW, HEX HD, GRD 5, 3/4"-10 X 2-1/4"	32	DO92	CLIP, HITCH PIN
4	DE1373	FLAT WASHER, 3/4"	33	GR376	SHEAVE KIT COMP (OPTIONAL)
5	GR60	PIN, ANCHOR DIAGONAL AND BASE END LIFT CYLINDER	34	GR105	SHEAVE PIN
6	CE1097	RING, RETAINING EXTERNAL, 1"	35	GL134	SHEAVE WHEEL
7	DE1251	NUT, HEX, SELF-LOCK, 3/4"-10	36	GL131	RETAINING RING, EXTERNAL, 15/16"
8	GR323	INNER AND OUTER BOOM ASSY, COMPLETE	37	CP284	NAME PLATE, HOLMES
9	GR31	BEARING, SLIDE, INNER BOOM	38	DE660	MACHINE SCREW, ROUND SLOTTED HEAD, #10-24 X 1/4"
10	DE521	CAP SCREW, SOCKET HEAD #10-24 X 1/2"	39	GR41	INNER DIAGONAL, LEFT
11	GR320	BOOM ASSY, INNER	40	GR121	PIN ASSY, ANCHOR OUTER BOOM AND LIFT CYLINDER ROD
12	GR232	BUSHING, BOOM SWIVEL PIN	41	GR120	PIN ASSY, ANCHOR BASE END ATTITUDE CYLINDER
13	GR56	PIN, ANCHOR, ROD END EXTENSION CYLINDER	42	DE1019	HEX NUT, 1/2"-13
14	EY719	RING, RETAINING INTERNAL, 3/4"	43	DE1397	LOCK WASHER, HELICAL, 1/2"
15	4709	GREASE FITTING, STRAIGHT	44	DE1368	FLAT WASHER, 1/2"
16	DE1365	FLAT WASHER	45	GR150	BRACE
17	DE456	CAP SCREW, HEX HD, GRD 5, 3/8"-16 X 1-1/4"	46	GR28	BEARING, SLIDE OUTER DIAGONAL
18	GR433	PLATE, CONTROL VALVE MOUNTING	47	GR412	SUPPORT ASSY, WHEEL LIFT, R.H.
19	DE1864	CAP SCREW, HEX HD, GRD 5, 5/16"-18 X 1/2"	48	GR418	GUSSET, WHEEL LIFT SUPPORT TUBE BRACE
20	DE1391	LOCK WASHER, HELICAL, 5/16"	49	GR411	SUPPORT ASSY, WHEEL LIFT, L.H.
21	GR111	PLATE SPACER	50	DE1644	CAP SCREW, HEX HD, GRD 8, 3/4"-10 X 2-1/2"
22	GR29	BEARING, SLIDE INNER DIAGONAL	51	DE1851	CAP SCREW, HEX HD, GRD 5, 1/2"-13 X 4-1/2"
23	GR42	INNER DIAGONAL, RIGHT	52	DE1243	HEX NUT, SELF-LOCKING, 3/8"
24	DE1936	HEX NUT, SLOTTED, 1-1/4"-7 UNC	53	GR289	DIAGONAL, OUTER WELDMENT, LEFT
25	GR122	ROLL PIN, 1/4"DIA X 1-3/4"	54	GR290	DIAGONAL, OUTER WELDMENT, RIGHT
26	GR75	PIN ANCHOR, BASE END EXTENSION CYLINDER	55	4710	GREASE FITTING, 45 DEG
27	GL133	RING RETAINING, EXTERNAL, 3/4"	56	GR106	SHEAVE ASSY, COMP
28	GR322	BOOM OUTER			
29	GR62	PIN ANCHOR ROD END, ATTITUDE CYLINDER			

# Parts for Protech Systems

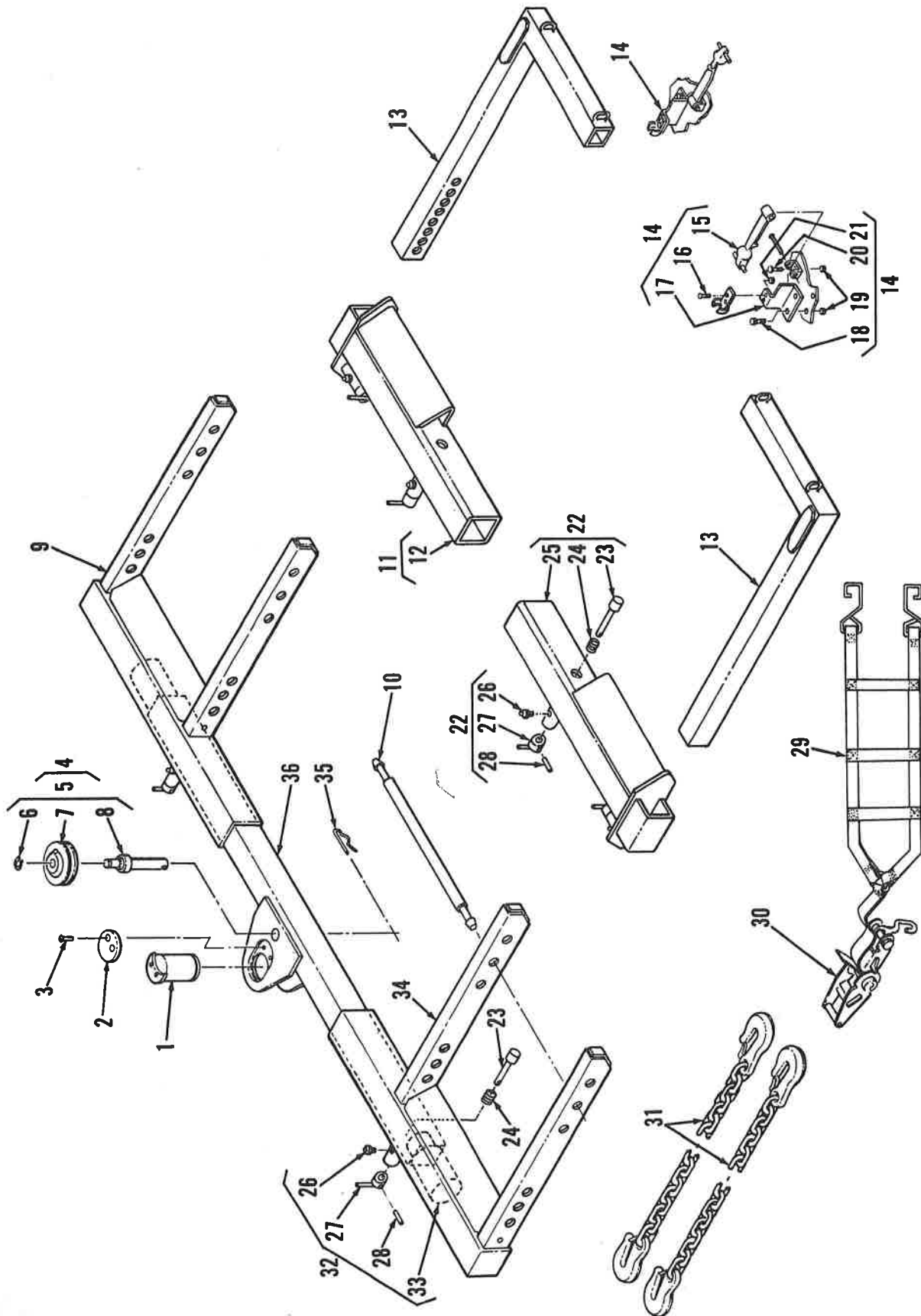


Figure 2. DFT 200 Wheel Lift Main Parts (Continued).

## Parts for Protech Systems

Parts List for Figure 2.  
DFT 200 Wheel Lift Main Parts Cont.

ID NO.	PART NO.	DESCRIPTION	ID NO.	PART NO.	DESCRIPTION
1	GR63	PIN, SWIVEL BOOM AND CARRIAGE	19	DE1238	NUT, SELF-LOCK, 5/16"-18
2	GR50	PLATE, SWIVEL PIN RETAINER	20	DE661	BOLT, SLOTTED TRUSS, 5/16"-18 X 3/4"
3	DE524	CAP SCREW, SOCKET HD, BUTTON HEAD, 5/16"-18 X 5/16"	21	DE1236	NUT, SELF-LOCK, 10-24
4	GR376	SHEAVE KIT COMPLETE (OPTIONAL)	22	GR427	RECEPTACLE ASSY, SUPPORT ARM (LEFT)
5	GR371	SHEAVE ASSY, COMP, SHORT	23	AY33	PIN, PLUNGER
6	GL131	RETAINING RING, EXTERNAL 15/16"	24	5172	SPRING
7	GL134	SHEAVE WHEEL ASSY	25	GR379	SUPPORT ARM, LEFT
8	GR372	SHEAVE PIN ASSY, 5/16" DIA X 5-7/32"	26	4709	GREASE FITTING
9	GR383	FORK SUPPORT ASSY, RIGHT	27	GX137	CAM ASSY
10	GR49	ROD, WHEEL SUPPORT	28	AA85	PIN, ROLL
11	GR426	RECEPTACLE ASSY, SUPPORT ARM (RIGHT)	29	GL136	WHEEL STRAP ASSY
12	GR378	SUPPORT ARM ASSY, RIGHT	30	GL137	RATCHET BUCKLE, WHEEL STRAP
13	GX223-B	SUPPORT ARM, REAR	31	GR406	SAFETY CHAIN ASSY
14	GX350	STORAGE BRACKET KIT, SUPPORT ARM	32	GR384	FORK SUPPORT ASSY, LEFT
15	GR400	RUBBER, HOOD CATCH, W/ BRACKET	33	GR389	TUBE ASSY, FORK SWIVEL
16	DE642	SCREW, ROUND, 10-24 X 1/2"	34	GR388	TUBE ASSY, SUPPORT FORK, LEFT
17	GR392	BRACKET, STORAGE		GR387	TUBE ASSY, SUPPORT FORK, RIGHT
18	DE1854	BOLT, HEX, 5/16"-18 X 1"	35	D092	CLIP, HITCH PIN
			36	GR381	CROSS TUBE ASSY

X-100 GR-100 w/100-100 (Blue Steel)

# Parts for Protech Systems

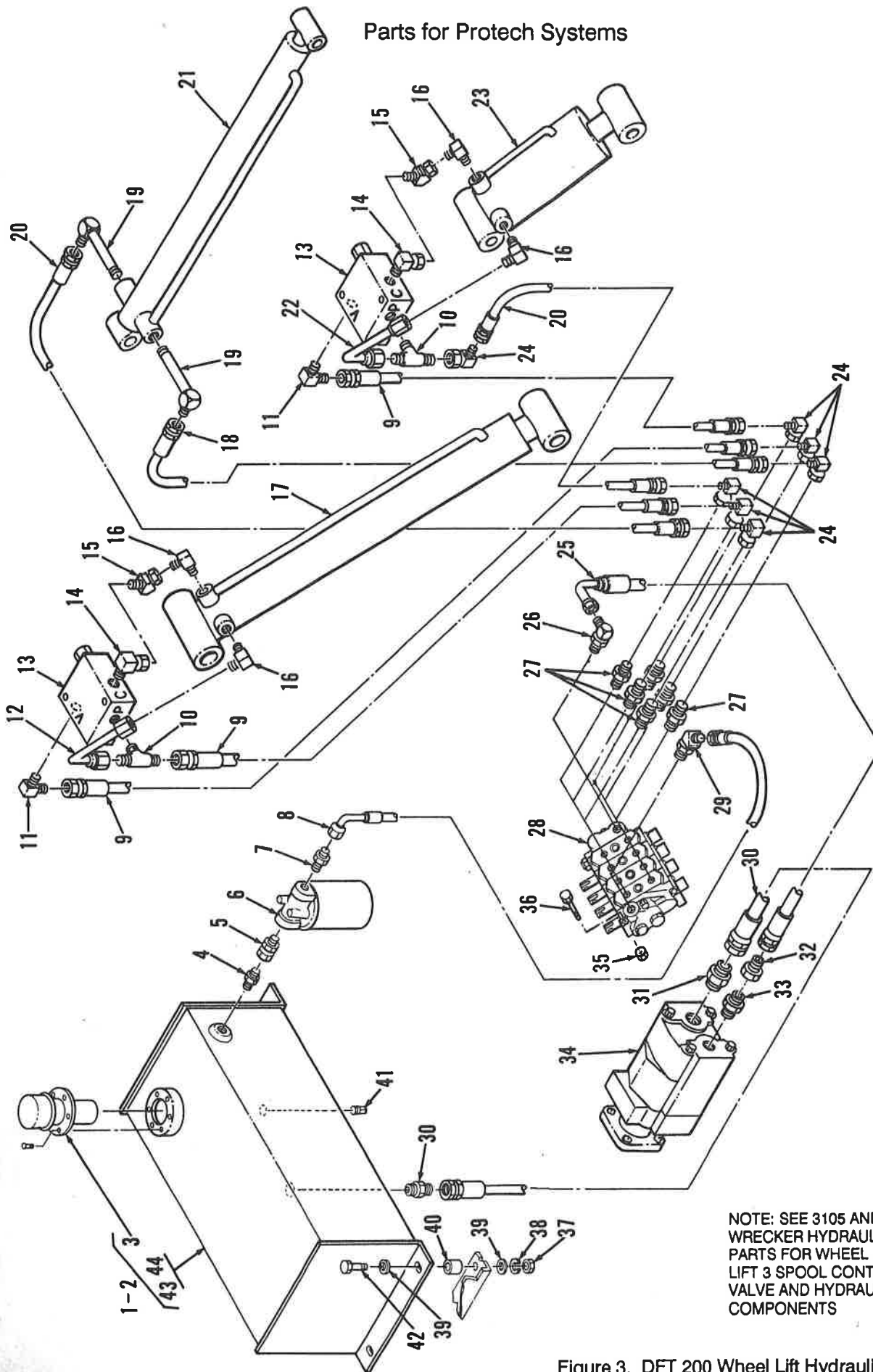


Figure 3. DFT 200 Wheel Lift Hydraulic Parts.



## Parts for Protech Systems

Parts List for Figure 3.  
DFT 200 Wheel Lift Hydraulic Parts

ID NO.	PART NO.	DESCRIPTION
1	FC102	HYDRAULIC RESERVOIR (COMP, OLD STYLE)
2	FC138	HYDRAULIC RESERVOIR (COMP, NEW STYLE SHOWN)
3	GO205	FILLER NECK AND CAP ASSY
4	EC71	PIPE NIPPLE, 3/4"NPT
5	DF163	ADAPTER, STRAIGHT, 3/4"NPT SWIVEL
6	EC88	FILTER, W/33 MICRON FILTER
7	EC66	ADAPTER, STRAIGHT, 3/4"JIC TO 3/4"NPT
8	GR279	HOSE ASSY, HYDRAULIC, 3/4"ID X 66"
9	GR247	HOSE ASSY, HYDRAULIC, 30"
10	FB140	MALE BRANCH TEE, 1/4"NPT X 3/8"JIC X 3/8"JIC
11	EC69	ADAPTER, 90 DEG, 3/8"JIC TO 1/4"NPT
12	GR73	TUBE ASSY, HYDRAULIC
13	EC86B	CHECK VALVE, PILOT OPERATED
14	GR131	ADAPTER, 90 DEG, SWIVEL, 1/4"NPT TO 3/8"FJX
15	GJ39	ADAPTER, 45 DEG, 3/8"JICM TO 3/8"FJX
16	BK427	ADAPTER, 90 DEG, 3/8"JIC TO 3/8"NPT
17	GR2	CYLINDER, HYDRAULIC LIFT, 3 1/2" BORE, 20-3/4" STROKE
18	GR249	HOSE ASSY, HYDRAULIC, 49"
19	GR132	ADAPTER, 90 DEG, EXTRA, EXTRA LONG, 1/4"NPT TO 3/8"JIC
20	GR248	HOSE ASSY, HYDRAULIC, 1/4"ID X 55"
21	GR354	CYLINDER, HYDRAULIC EXTENSION
22	GR69	TUBE ASSY, HYDRAULIC (ATTITUDE CYLINDER)

ID NO.	PART NO.	DESCRIPTION
23	GR3	CYLINDER, HYDRAULIC, ATTITUDE, 4-1/2" BORE, 3" STROKE <i>GR46</i>
24	EC132	ADAPTER, 90 DEG, 3/8"JIC TO 3/8"FJX
25	GR204	HOSE ASSY, HYDRAULIC, 1/2"ID X 132"
26	EC67	ADAPTER, 90 DEG "O" RING, 1/2"JIC TO 5/8"ORB
27	EC77	ADAPTER, "O" RING, 3/8"JIC TO 1/2"ORB
28	GV131	CONTROL VALVE, 4 SPOOL (KONTAK) (USED WITH PT 10 AND PT1102 ONLY)
29	GO234	ADAPTER, 45 DEG, 5/8"JIC TO 5/8"ORB
30	GO122	HOSE ASSY, HYDRAULIC, 1"ID X 72"
31	EC203	ADAPTER, STRAIGHT, 1"NPT TO 1"JIC
32	GI163	ADAPTER, STRAIGHT, 3/4"JICF TO 1/2"JICM
33	EC87	ADAPTER, STRAIGHT, 1"NPT TO 3/4"JIC
34	GR367	PUMP, 7 GPM
35	DE1243	HEX NUT, SELF-LOCKING, 3/8"-16
36	DE455	CAP SCREW, HEX HD, GRD 5, 3/8"-16 X 2-3/4"
37	DE1016	HEX NUT, 3/8"-16
38	DE1394	LOCK WASHER, HELICAL, 3/8"
39	DE1366	FLAT WASHER, 3/8"
40	FC137	SPACER
41	EC100	PIPE PLUG, SQ HD, 3/4"NPT
42	DE45	CAP SCREW, HEX HD, 3/8"-16 X 2-1/4"
43	FC101	HYDRAULIC RESERVOIR (WELDED, OLD STYLE)
44	FC136	HYDRAULIC RESERVOIR (WELDED)

# Parts for Protech Systems

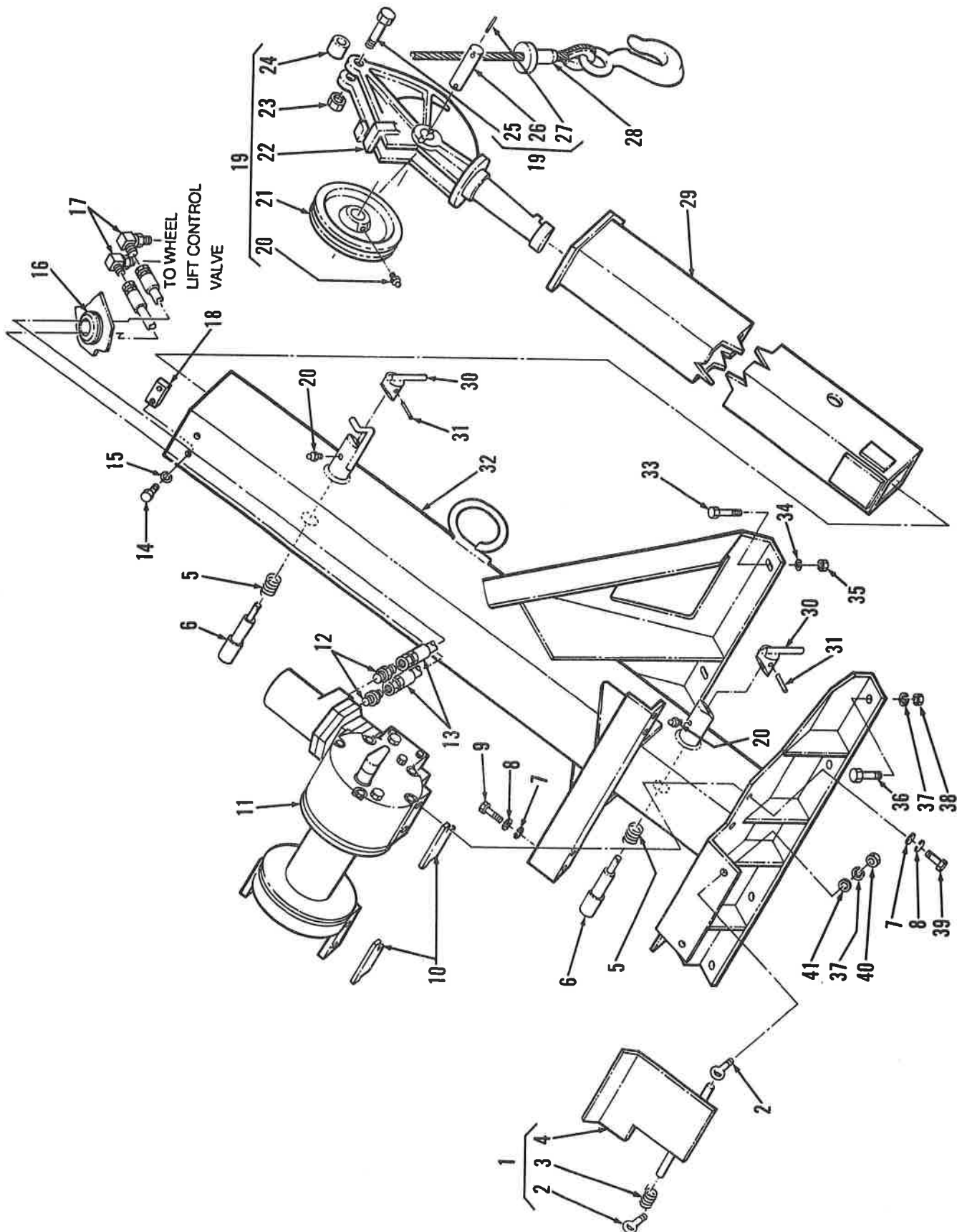


Figure 4. 1102 Wrecker For 460B Body,  
Parts and Hydraulic Fittings.

## Parts for Protech Systems

Parts List for Figure 4.

1102 Wrecker For 460B Body Parts and Hydraulic Fittings

ID NO.	PART NO.	DESCRIPTION
--------	----------	-------------

1	GV29	ANTI-SPOOLING DEVICE, COMP
2	GO157	EYEBOLT, 1/2"-20
3	GO158	SPRING
4	GV31	PLATE ASSY (WELDED)
5	HA393	SPRING, PLUNGER PIN
6	GV107	PLUNGER PIN, CAM LOCK
7	DE1365	FLAT WASHER, 3/8", ZC PL
8	DE1394	LOCK WASHER, HELICAL, 3/8", ZC PL
9	DE454	CAP SCREW, HEX HD, GRD 5, 3/8"-16 X 1", ZC PL
10	GV16	SPACER
11	GV73	WINCH ASSY, SMALL DRUM (W/ MOTOR)
12	EF50	ADAPTER, STRAIGHT, 5/8"ORB, 1/2"JIC
13	GV122	HOSE ASSY, 1/2"ID X 50"
14	DE1941	CAP SCREW, HEX, HD, GRD 5, 5/16"-18 X 5/8", ZC PL
15	DE1391	LOCK WASHER, HELICAL, 5/16", ZC PL
16	GV57	GROMMET, RUBBER
17	FB91	ELBOW 90 DEG, 1/2"ORB, 1/2"JIC
18	GR111	PLATE, SPACER
19	ZZ66B	YOKE ASSY (COMP)
20	4709	GREASE FITTING, STRAIGHT, 1/4"-28
21	1046E	WHEEL, SHEAVE, 1-3/16" BORE
22	ZZ425	YOKE

ID NO.	PART NO.	DESCRIPTION
--------	----------	-------------

23	DE1246	HEX NUT, SELF-LOCKING, 1/2"-13, ZC PL
24	4674	SPACER
25	DE466	CAP SCREW, HEX HD, GRD 5, 1/2"-13 X 2-1/4", ZC PL
26	ZZ53	SHAFT, 1-3/16" X 3"
27	ZZ31	ROLL PIN, 3/16" X 2"
28	CK25B	CABLE ASSY, 3/8"
29	GV10	INNER BOOM ASSY (WELDED)
30	GV104	CAM ASSY, PLUNGER PIN
31	AA87	ROLL PIN
32	GV101	OUTER BOOM ASSY (WELDED)
33	DE472	CAP SCREW, HEX HD, GRD 5, 5/8"-11 X 2", ZC PL
34	DE1401	LOCK WASHER, HELICAL, 5/8", ZC PL
35	DE1201	NUT, 5/8"-11
36	DE464	CAP SCREW, HEX HD, GRD 5, 1/2"-13 X 2", ZC PL
37	DE1397	LOCK WASHER, HELICAL, 1/2", ZC PL
38	DE1019	NUT, 1/2"-13, ZC PL
39	DE456	CAP SCREW, HEX HD, GRD 5, 3/8"-16 X 1-1/4", ZC PL
40	DE1162	HEX NUT, 1/2"-20, ZC PL
41	DE1368	FLAT WASHER, 1/2", ZC PL

# Parts for Protech Systems

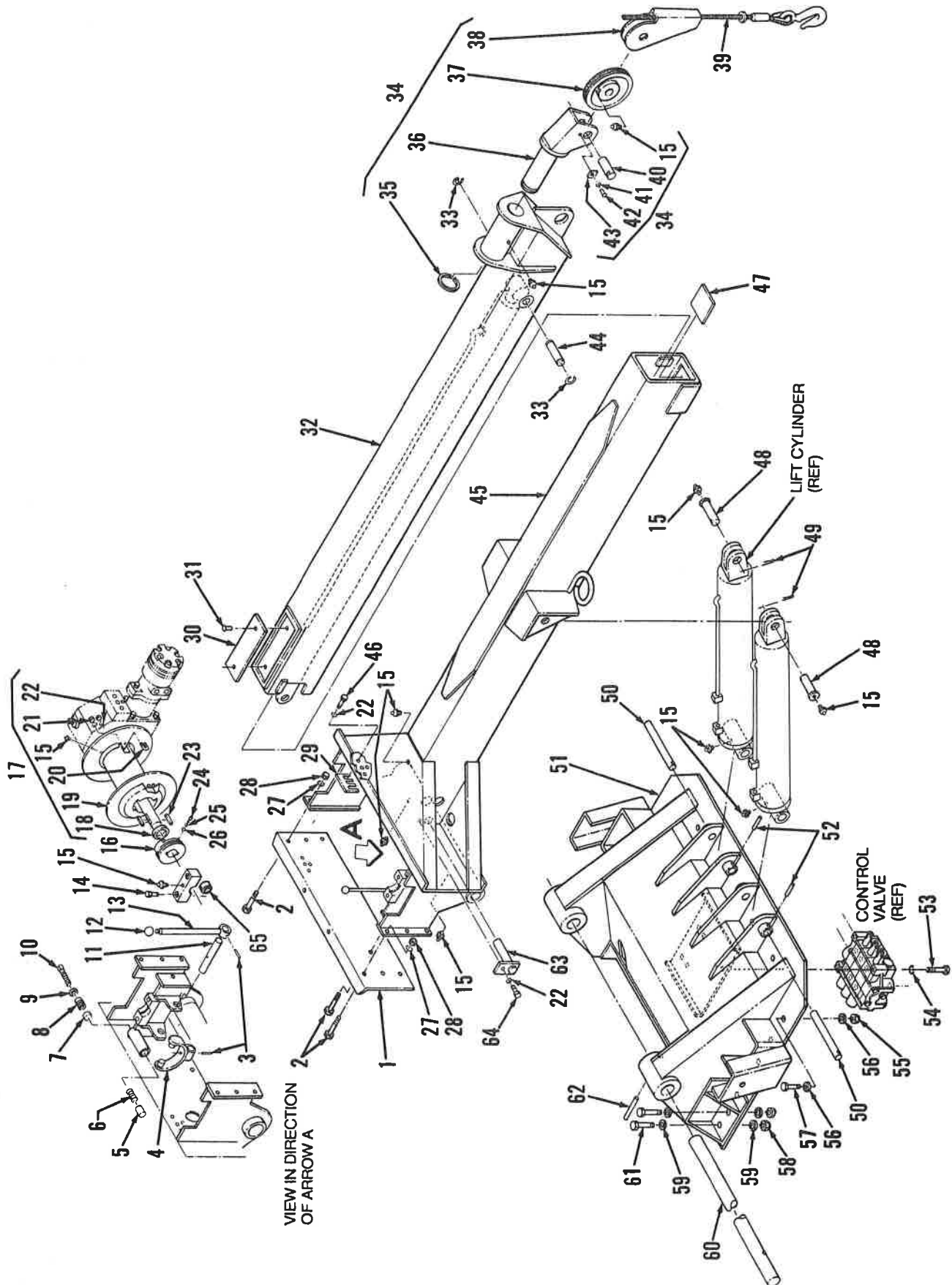


Figure 5. 3105B Wrecker Main Parts.

# Parts for Protech Systems

Parts List for Figure 5.  
31058 Wrecker Main Parts

ID NO.	PART NO.	DESCRIPTION
1	GS14	CROSS MEMBER, BOLTED
2	DE460	CAP SCREW, HEX HD, GRD 5, 1/2"-13 X 1-1/2"
3	ET189	ROLL PIN
4	ET182	FORK, COUPLING SHIFTER
5	BK325	BRAKE, BOOM DRUM
6	BK324	SPRING, BOOM DRUM BRAKE
7	BK328	SPACER, BRAKE SPRING
8	BK326	PLUG, PIPE - MODIFIED
9	DE1016	HEX NUT, 3/8"-16
10	DE826	SET SCREW, SQ HD, CUP POINT, 3/8"-16 X 2"
11	GO59	SHAFT, COUPLING SHIFTER
12	EY896	KNOB, CONTROL HANDLE
13	GO61	HANDLE ASSY, CLUTCH SHIFTER
14	DE427	CAP SCREW, HEX HD, GRD 5, 5/8"-18 X 2-3/8"
15	4709	GREASE FITTING, STRAIGHT
16	ET226	CLUTCH, SLIDING
17	GO77	DRUM ASSY, CABLE
18	ZZ426	RETAINING RING, 1/2"
19	GO88	DRUM CABLE
20	1034D	"U" BOLT, CABLE CLAMP
21	DE1016	HEX NUT, 3/8"-16
22	DE1394	LOCK WASHER, HELICAL, 3/8"-16 X 1"
23	ZZ347	KEY, CABLE DRUM SHAFT
24	DE1685	SET SCREW, HEX SOCKET CUP POINT, 5/16"-18 X 5/16"
25	ET184	SPRING, DETENT
26	ET185	BALL, DETENT
27	DE1397	LOCK WASHER, HELICAL, 1/2"
28	DE1019	HEX NUT, 1/2"-13
29	GO113	SHIM, TRANSMISSION MOUNTING
30	EC36	SLIDE, INNER BOOM
31	DE1580	RIVET, USM #AK66H
32	GS21	INNER BOOM
33	EC38	RETAINING RING, INTERNAL

ID NO.	PART NO.	DESCRIPTION
34	GO101	YOKE ASSY, COMPLETE
35	GO23	RETAINER, YOKE ASSY
36	GO100	YOKE ASSY (WELDED)
37	1046E	BOOM SHEAVE WHEEL
38	GO79	CABLE GUIDE ASSY (WELDED)
39	CF114B	CABLE ASSY, SERVICE, 100 FT X 3/8"
40	GO6	SHAFT, BOOM END SHEAVE
41	DE1388	LOCK WASHER, HELICAL, 1/4"
42	DE1850	CAP SCREW, HEX HD, GRD 5, 1/4"-20 X 1/2"
43	GO7	RETAINER, SHEAVE PIN
44	EC49	PIN, EXTENSION CYLINDER, ROD END
45	HG5	CROSS MEMBER AND BOOM ASSY (WELDED)
46	DE454	CAP SCREW, HEX HD, GRD 5, 3/8"-16 X 1"
47	EC37	BLOCK, BOOM SLIDE, OUTER BOOM
48	GO38	PIN, LIFT CYLINDER, ROD END
49	DO92	CLIP, HITCH PIN
50	GO8	PIN, LIFT CYLINDER BASE
51	HE43	WRECKER BASE
52	DE1897	PIN, SPIRAL, 2" LONG
53	DE1863	CAP SCREW, HEX HD, GRD 5, 5/16"-18 X 2-3/4"
54	DE1391	LOCK WASHER, HELICAL, 5/16"
55	DE1246	NUT, SELF-LOCK, 1/2"-13
56	BS166	WASHER, HARDENED, 1/2"
57	DE468	CAP SCREW, HEX HD, GRD 5, 1/2"-13 X 2-1/2"
58	DE1247	NUT, SELF-LOCK, 5/8"-11
59	BJ287	WASHER, HARDENED, 5/8"
60	HE36	PIN, BOOM PIVOT
61	DE478	CAP SCREW, HEX HD, GRD 5, 5/8"-11 X 2-3/4"
62	DE1898	SPIRAL PIN, 3/8" DIA X 3-1/2"
63	GO73	PIN ASSY, EXTENSION CYLINDER, BASE END
64	DE451	CAP SCREW, HEX HD, GRD 5, 3/8"-16 X 3/4"
65	ZZ334	BUSHING, LEG BEARING
66	GS328	TRANSMISSION WITH MOTOR

# Parts for Protech Systems

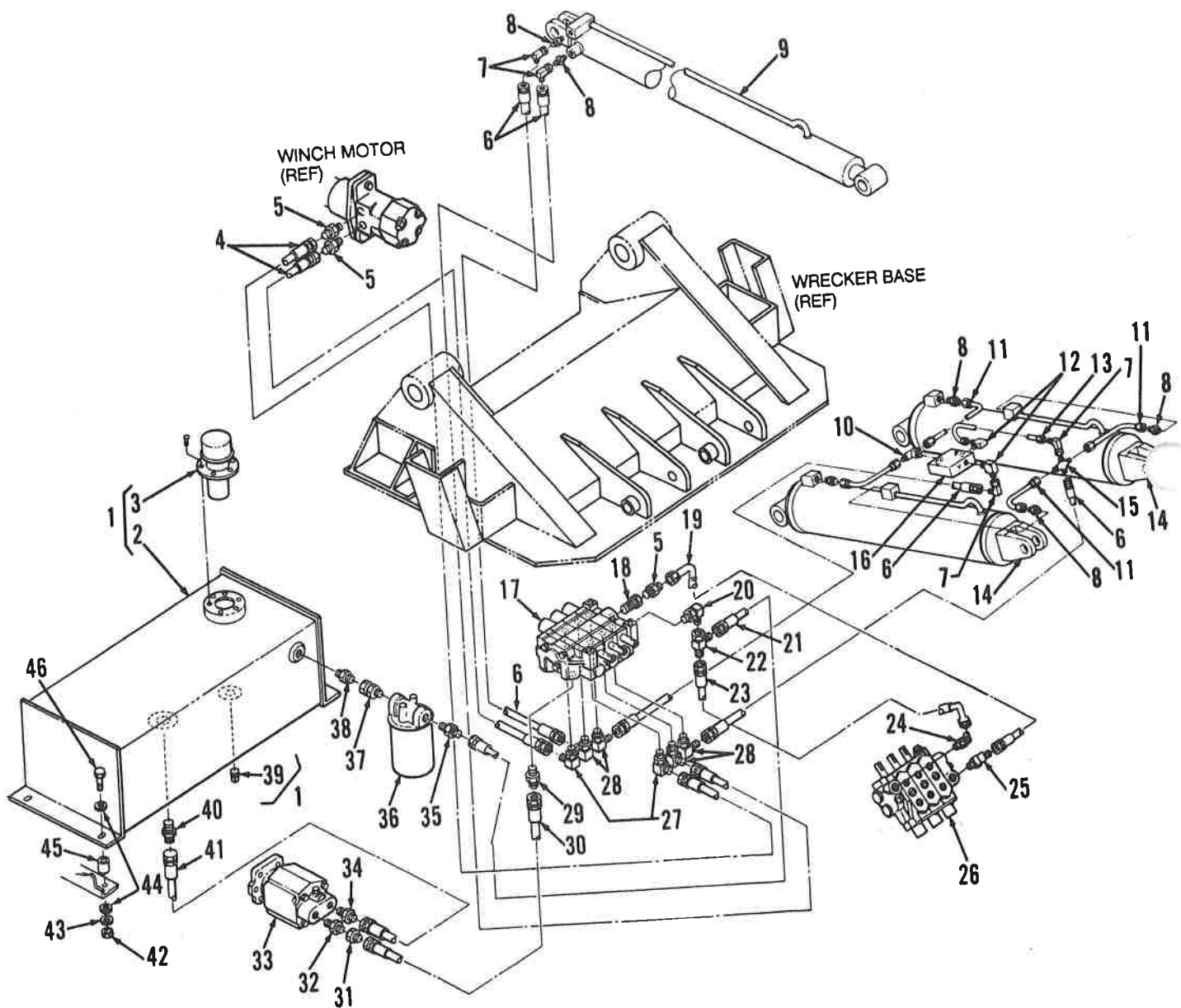


Figure 6. 3105B Wrecker Hydraulic Parts with Related DFT 200 Wheel Lift Control Valve Hydraulic Components.

# Parts for Protech Systems

Parts List for Figure 6.

3105B Wrecker Hydraulic Parts with Related DFT 200  
Wheel Lift Control Valve Hydraulic Components

ID NO.	PART NO.	DESCRIPTION	ID NO.	PART NO.	DESCRIPTION
1	FC102	HYDRAULIC RESERVOIR COMP (OLD STYLE)	23	GR279	HOSE ASSY, 3/4"ID X 66"
	FC138	HYDRAULIC RESERVOIR COMP (NEW STYLE SHOWN)	24	GO234	ADAPTER, 45 DEG, 5/8"JIC TO 5/8"ORB
2	FC101	HYDRAULIC RESERVOIR WELDED (OLD STYLE)	25	EC67	ADAPTER, 90 DEG, "O"-RING, 1/2"JIC TO 5/8"ORB
	FC136	HYDRAULIC RESERVOIR WELDED (NEW STYLE)	26	GR432	VALVE, DIRECTIONAL CONTROL, 3 SPOOL KONTAK (WHEEL LIFT)
3	GO205	FILLER NECK AND CAP ASSY	27	FB91	ADAPTER, 90 DEG, 1/2"ORB TO 1/2"JIC
4	GS56	HOSE ASSY, 1/2"ID X 48"	28	FB92	ADAPTER, 90 DEG, 1/2"ORB TO 3/8"JIC
5	EF50	ADAPTER, STRAIGHT, 1/2"JIC TO 5/8"ORB	29	EF52	ADAPTER, STRAIGHT, 3/4"ORB TO 1/2"JIC
6	FB107	HOSE ASSY, 1/4"ID X 49"	30	GS50	HOSE ASSY, 1/2"ID X 69"
7	EC132	ADAPTER, 90 DEG, 3/8"JIC SWIVEL	31	GI163	ADAPTER, STRAIGHT, 3/4"JIC TO 1/2"JIC
8	EC131	ADAPTER, STRAIGHT, 3/8"JIC TO 3/8"NPT	32	EC87	ADAPTER, STRAIGHT, 1"NPT TO 3/4"JIC
9	GO82	CYLINDER, HYDRAULIC EXTENSION	33	GR367	PUMP, 7 GPM
10	FB140	TEE, MALE BRANCH, 1/4"NPT TO 3/8"JIC	34	EC203	ADAPTER, STRAIGHT, 1"NPT TO 1"JIC
11	GO50	TUBE ASSY, LIFT CYLINDER	35	EC66	ADAPTER, STRAIGHT, 3/4"JIC TO 3/4"NPT
12	EC69	ADAPTER, 90 DEG, 1/4"NPT TO 3/8"JIC	36	EC88	FILTER, OIL
13	GO53	TUBE ASSY	37	DF163	ADAPTER, STRAIGHT, 3/4"NPT SWIVEL
14	HE1 *	HYDRAULIC CYLINDER, LIFT, 4"BORE, 21"STROKE	38	EC71	PIPE NIPPLE, 3/4"NPT
15	FB111	CROSS, MALE, 3/8"JIC	39	EC100	PIPE PLUG, SQ HD, 3/4"NPT
16	EC86B	COUNTERBALANCE VALVE	40	EC203	ADAPTER, STRAIGHT, 1"JIC TO 1"NPT
17	HG11	VALVE, DIRECTIONAL CONTROL (WRECKER, 3 SPOOL)	41	GO122	HOSE ASSY, 1"ID X 72"
18	HE41	SLEEVE, POWER BEYOND	42	DE1016	HEX NUT, 3/8"-16
19	GR137	HOSE ASSY, 1/2"ID X 65"	43	DE1394	LOCK WASHER, HELICAL 3/8"
20	FB162	ADAPTER, 90 DEG, 3/4"JIC TO 3/4"ORB	44	DE1366	FLAT WASHER, 3/8"
21	GS47	HOSE ASSY, 3/4" X 24"	45	FC137	SPACER
22	GB222	TEE, SWIVEL, 3/4"JIC	46	DE45	CAP SCREW, HEX HD, 3/8"-16 X 2-1/4"

\* HE-1 Replaced by HE-1B which is 18" stroke  
must be replaced in pairs 0303534

Kut 030353

# Parts for Protech Systems

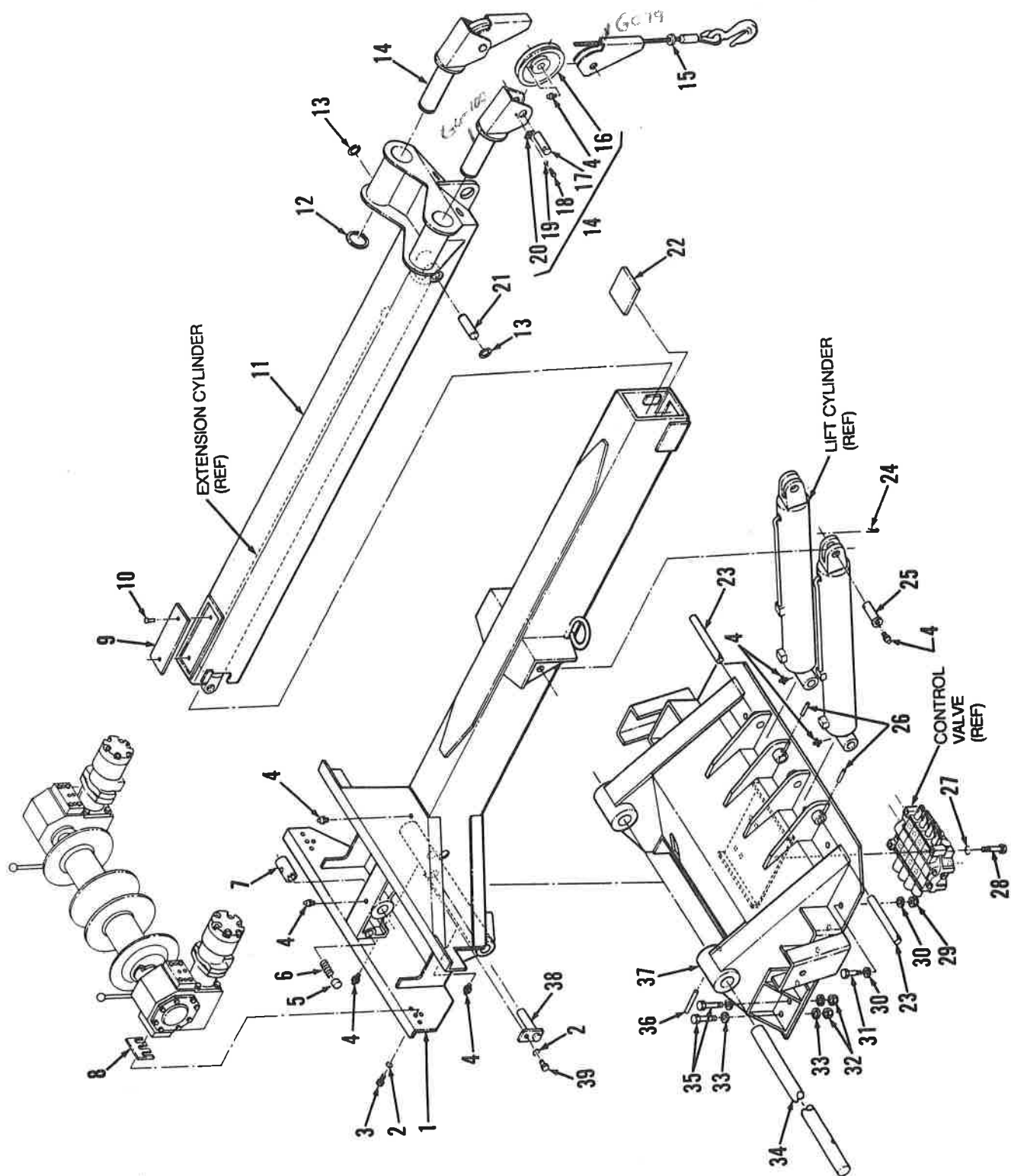


Figure 7. 3210 Wrecker Main Parts.



## Parts for Protech Systems

### Parts List for Figure 7. 3210 Wrecker Main Parts

ID NO.	PART NO.	DESCRIPTION
-----------	-------------	-------------

1	HE5	BOOM AND WINCH BASE ASSY (WELDED)
2	DE1394	LOCK WASHER, HELICAL, 3/8"
3	DE454	CAP SCREW, HEX HD, GRD 5, 3/8"-16 X 1"
4	4709	GREASE FITTING, STRAIGHT
5	BK325	BRAKE, BOOM DRUM BACKLASH
6	BK328	DISK SPRING
7	FB53	BEARING
8	GO113	SHIM
9	EC36	SLIDE, INNER BOOM
10	DE1580	RIVET, BLIND
11	GO99	BOOM ASSY, INNER (WELDED)
12	GO23	RETAINER, YOKE ASSY
13	EC38	RETAINING RING, INTERNAL
14	GO101	YOKE ASSY, BOOM END
15	CF114B	SERVICE CABLE ASSY, 100FT X 3/8"
16	1046E	BOOM SHEAVE WHEEL
17	GO6	SHAFT, BOOM END SHEAVE
18	DE1850	CAP SCREW, HEX HD, GRD 5, 1/4"-20 X 1/2"
19	DE1388	LOCK WASHER, HELICAL, 1/4"
20	GO7	RETAINER, SHEAVE PIN
21	EC49	PIN, CYLINDER ANCHOR
22	EC37	BLOCK, BOOM SLIDE, OUTER BOOM

ID NO.	PART NO.	DESCRIPTION
-----------	-------------	-------------

23	GO8	PIN, HOIST CYLINDER BASE, 1" X 8-1/8"
24	DO92	CLIP HITCH PIN
25	GO38	PIN, LIFT CYLINDER ROD END
26	DE1897	SPIRAL PIN, 5/16" DIA X 2"
27	DE1391	LOCK WASHER, HELICAL, 5/16"
28	DE1863	CAP SCREW, HEX HD, GRD 5, 5/16"-18 X 2-3/4"
29	DE1246	HEX NUT, SELF-LOCK, 1/2"-13
30	BS166	WASHER, HARDENED, 1/2"
31	DE468	CAP SCREW, HEX HD, GRD 5, 1/2"-13 X 2-1/2"
32	DE1247	HEX NUT, SELF-LOCK, 5/8"-11
33	BJ287	WASHER, HARDENED, 5/8"
34	HE36	PIN, BOOM PIVOT
35	DE478	CAP SCREW, HEX HD, GRD 5, 5/8"-11 X 2-3/4"
36	DE1898	SPIRAL PIN, 3/8" DIA X 3-1/2"
37	HE43	WRECKER BASE
38	GO73	PIN ASSY, EXTENSION CYLINDER, BASE END
39	DE451	CAP SCREW, HEX HD, GRD 5, 3/8"-16 X 3/4"
40	GO103B	TRANSMISSION WITH MOTOR R.H.
	GO106B	TRANSMISSION WITH MOTOR L.H.

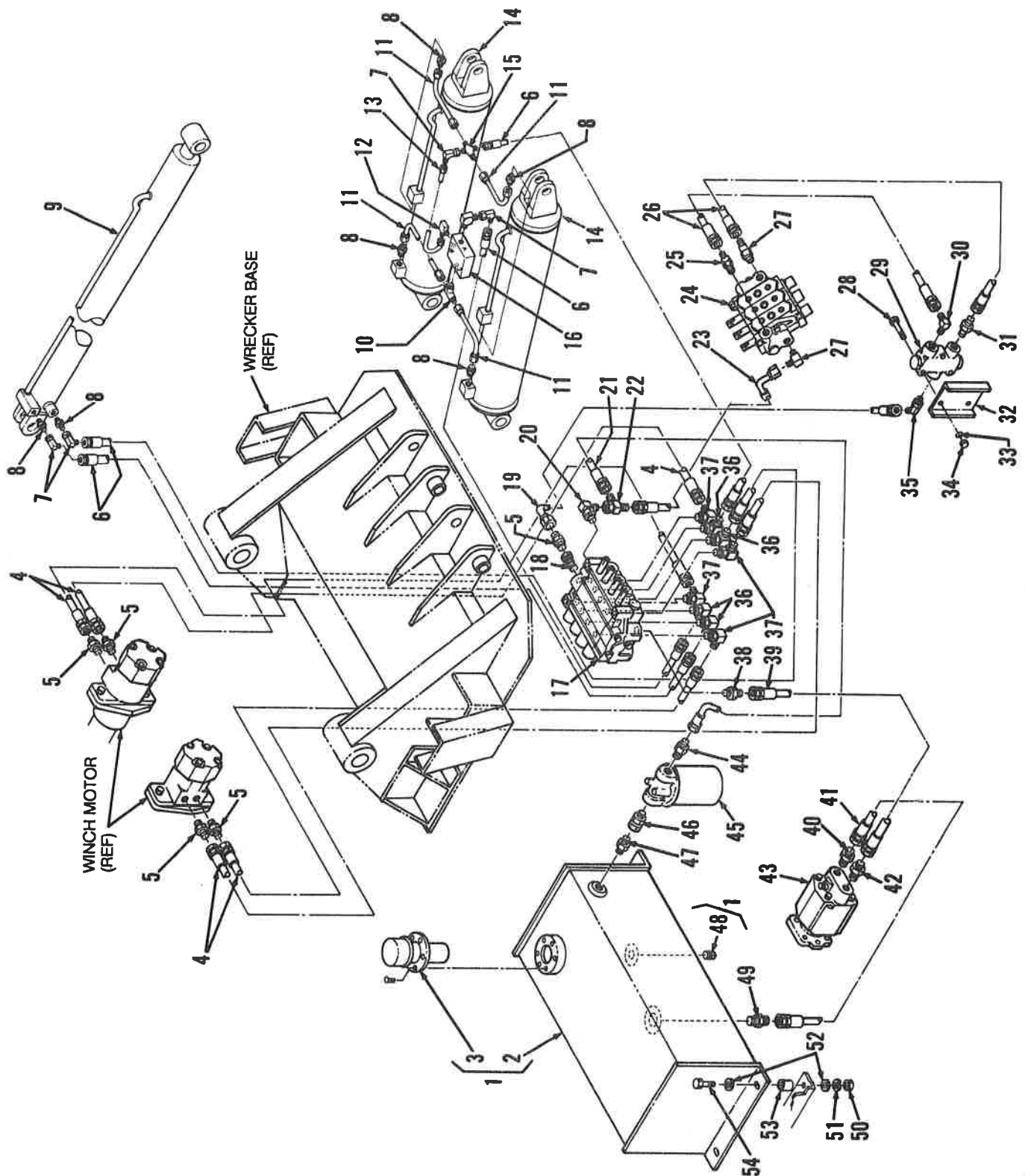


Figure 8. 3210 Wrecker Hydraulic Parts with Related DFT 200 Wheel Lift Control Valve.

# Parts for Protech Systems

## Parts List for Figure 8.

3210 Wrecker Hydraulic Parts with Related DFT 200  
Wheel Lift Control Valve

ID PART DESCRIPTION  
NO. NO.

1	FC102	HYDRAULIC RESERVOIR COMP (OLD STYLE)
	FC138	HYDRAULIC RESERVOIR COMP (NEW STYLE SHOWN)
2	FC101	HYDRAULIC RESERVOIR, WELDED (OLD STYLE)
	FC136	HYDRAULIC RESERVOIR, WELDED (NEW STYLE)
3	GO205	FILLER NECK AND CAP ASSY
4	GI260	HOSE ASSY, 1/2"ID X 48"
5	EF50	ADAPTER, STRAIGHT, 1/2"JIC TO 5/8"ORB
6	FB107	HOSE ASSY, 1/4"ID X 49"
7	EC132	ADAPTER, 90 DEG LONG, 3/8"JIC TO 3/8"JIC
8	EC131	ADAPTER, STRAIGHT, 3/8"JIC TO 3/8"NPT
9	GO82	CYLINDER, HYDRAULIC EXTENSION
10	FB140	TEE, MALE BRANCH, 1/4"NPT TO 3/8"JIC
11	GO50	TUBE ASSY, LIFT CYLINDER
12	EC69	ADAPTER, 90 DEG, 1/4"NPT TO 3/8"JIC
13	GO53	TUBE ASSY
14	HE1	HYDRAULIC CYLINDER LIFT, 4"BORE, 21"STROKE
15	FB111	CROSS MALE, 3/8"JIC
16	EC86B	COUNTERBALANCE VALVE
17	HE38	VALVE, DIRECTIONAL CONTROL (WRECKER 4 SPOOL
18	HE41	SLEEVE, POWER BEYOND
19	GR299	HOSE ASSY, 3/4"ID X 46"
20	FB162	ADAPTER, 90 DEG, 3/4"JIC TO 3/4"ORB
21	GS47	HOSE ASSY, 3/4"ID X 24"
22	GB222	TEE, SWIVEL, 3/4"JIC
23	GR279	HOSE ASSY, 3/4"ID X 66"
24	GR432	VALVE, DIRECTIONAL CONTROL, 3 SPOOL KONTAK (WHEEL LIFT)
25	GO234	ADAPTER, 45 DEG, 5/8"JIC TO 5/8"ORB

ID PART DESCRIPTION  
NO. NO.

26	GR278	HOSE ASSY, 1/2"ID X 18"
27	EC67	ADAPTER, 90 DEG, "O"-RING, 1/2"JIC TO 5/8"ORB
28	DE1846	CAP SCREW, HEX HD, 5/16"-18 X 2"
29	EF51	FLOW DIVIDER VALVE
30	GH117	ADAPTER, 90 DEG, 1/2"JIC TO 1/2"NPT
31	EF53	ADAPTER, STRAIGHT, 1/2"JIC TO 1/2"NPT
32	GR277	MOUNTING BRACKET, FLOW DIVIDER
33	DE1391	LOCK WASHER, HELICAL, 5/16"
34	DE1011	HEX NUT, 5/16"-18
35	GO302	ADAPTER, 45 DEG, 3/4"JIC TO 1/2"NPT
36	FB92	ADAPTER, 90 DEG, 1/2"ORB TO 3/8"JIC
37	FB91	ADAPTER, 90 DEG, 1/2"ORB TO 1/2"JIC
38	EC65	ADAPTER, STRAIGHT, 3/4"ORB TO 3/4"JIC
39	GO123	HOSE ASSY, 3/4"ID X 68"
40	EC203	ADAPTER, STRAIGHT, 1"JIC TO 1"NPT
41	GO122	HOSE ASSY 1"ID X 72"
42	EC87	ADAPTER, STRAIGHT, 1"NPT TO 3/4"JIC
43	GO356	PUMP, HYDRAULIC, 12 GPM
44	EC66	ADAPTER, STRAIGHT, 3/4"JIC TO 3/4"NPT
45	EC88	FILTER, OIL
46	DF163	ADAPTER, STRAIGHT, 3/4"NPT SWIVEL
47	EC71	PIPE NIPPLE, 3/4"NPT
48	EC100	PIPE PLUG, SQ HD, 3/4"NPT
49	EC203	ADAPTER, STRAIGHT, 1"JIC TO 1"NPT
50	DE1016	HEX NUT, 3/8"-16
51	DE1394	LOCK WASHER, HELICAL, 3/8"
52	DE1366	FLAT WASHER, 3/8"
53	FC137	SPACER
54	DE45	CAP SCREW, HEX HD, 3/8"-16 X 2-1/4"

\* Replaced by HE-1B 1 1/2" stroke. must be replaced in pairs.

# Parts for Protech Systems

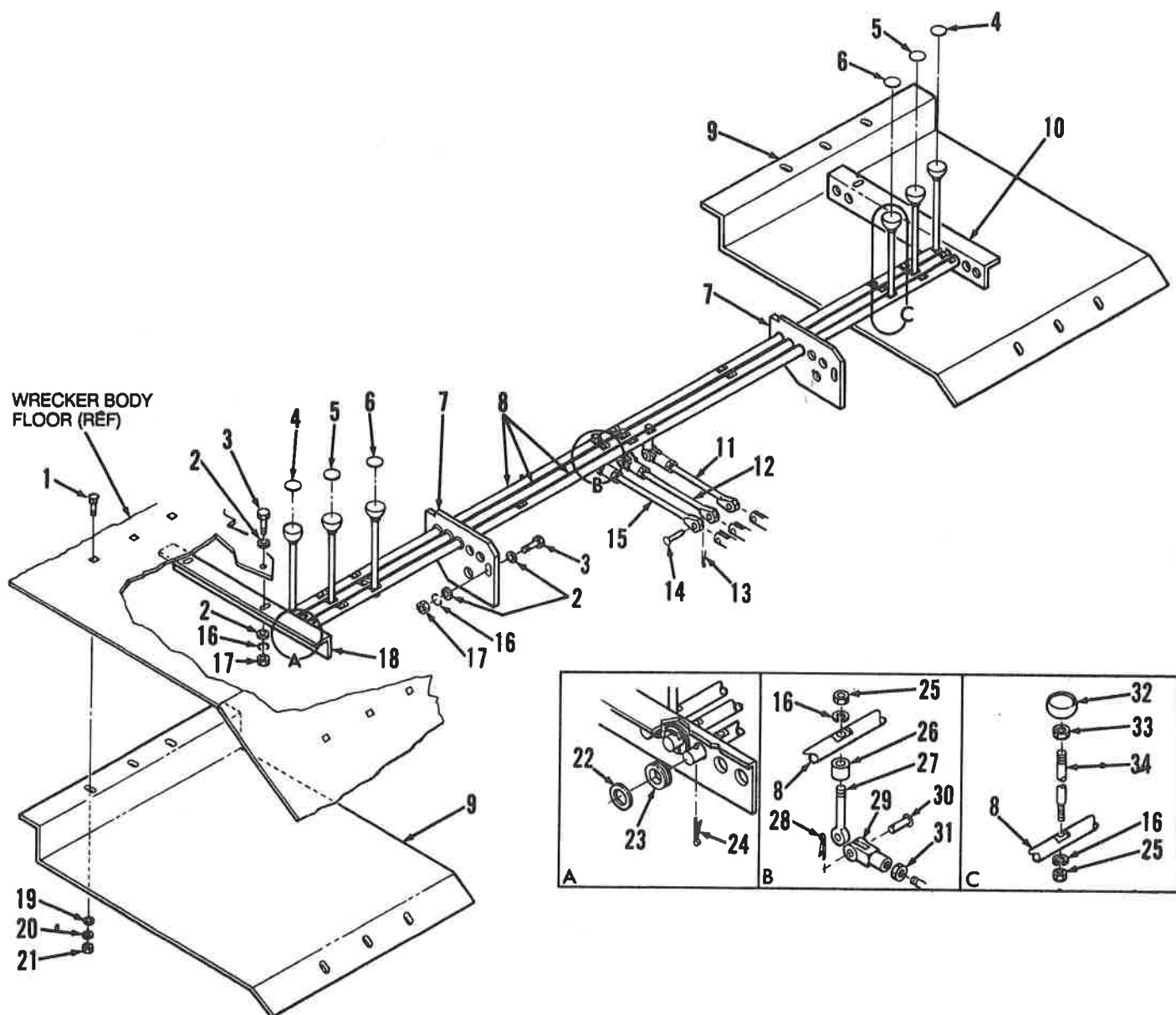


Figure 9. Control Kit (GR440) For PT10H System  
(For Use with Wheel Lift w/o Wrecker on 460B Body.)

## Parts for Protech Systems

Parts List for Figure 9.

Control Kit (GR440) For PT10H System (For Use With  
Wheel Lift w/o Wrecker on 460B Body)

ID NO.	PART NO.	DESCRIPTION
-----------	-------------	-------------

1	DE952	BOLT CARRIAGE, 1/4"-20 X 3/4"
2	DE1365	FLAT WASHER, 3/8"
3	DE454	CAP SCREW, HEX HD, GRD 5, 3/8"-16 X 1"
4	GX241	DECAL, W.L., EXTEND IN/OUT
5	GX240	DECAL, W.L., LIFT UP/DOWN
6	GO340	DECAL, W.L., TILT UP/DOWN
7	GO325	PLATE, BEARING
8	GX329	CROSS SHAFT
9	HE30	GUARD, SPLASH CONTROL
10	HE29	BRACKET, R.H. FENDER
11	GR434	PUSH ROD, 8-1/4" (TILT)
12	GR435	PUSH ROD, 9-1/8" (LIFT)
13	DE1476	COTTER PIN, 3/32" X 3/4"
14	ZZ148	CLEVIS PIN, 1/4"
15	GR436	PUSH ROD, 10" (EXTEND)
16	DE1394	LOCK WASHER, HELICAL, 3/8"
17	DE1016	HEX NUT, 3/8"-16

ID NO.	PART NO.	DESCRIPTION
-----------	-------------	-------------

18	HE28	BRACKET, L.H. FENDER
19	DE1358	FLAT WASHER, 1/4"
20	DE1388	LOCK WASHER, HELICAL, 1/4"
21	DE1010	HEX NUT, 1/4"-20
22	GO333	WASHER, NYLON
23	GO332	BEARING, PLASTIC
24	DE1486	COTTER PIN, 1/8" X 1-1/4"
25	DE1160	HEX NUT, 3/8"-24
26	GO331	SLEEVE
27	GO330	EYE BOLT, 3/8"-24 X 2-1/2"
28	DE1472	COTTER PIN, 1/16" X 7/16"
29	GV18	YOKE END, 3/8"-24
30	GV19	CLEVIS PIN, 3/8"
31	DE1206	HEX NUT, JAM, 3/8"-24
32	BJ401	KNOB, 1/2"-13
33	DE1180	HEX NUT, JAM, 1/2"-13
34	GO324	LEVER ROD

## Parts for Protech Systems

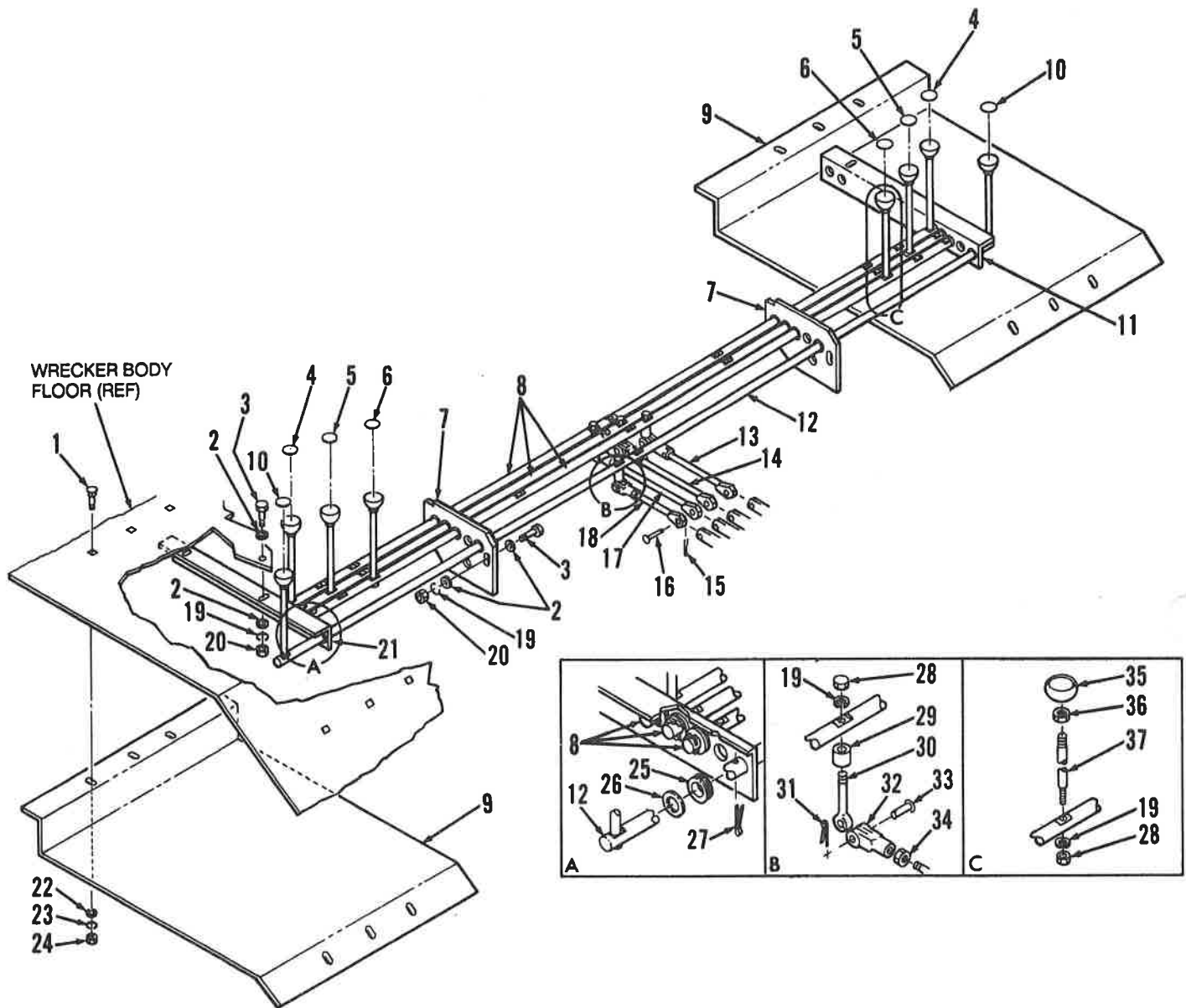


Figure 10. Control Kit (GR440) & (GV133) For 1102 System  
(For Use with Wheel Lift and 1102 Wrecker on 460B Body).

## Parts for Protech Systems

### Parts List for Figure 10.

Control Kit (GR440) & (GV133) For 1102 System (For Use  
With Wheel Lift and 1102 Wrecker on 460B Body)

ID NO.	PART NO.	DESCRIPTION
-----------	-------------	-------------

1	DE952	BOLT CARRIAGE, 1/4"-20 X 3/4"
2	DE1365	FLAT WASHER, 3/8"
3	DE454	CAP SCREW, HEX HD, GRD 5, 3/8"-16 X 1"
4	GX241	DECAL, W.L., EXTEND IN/OUT
5	GX240	DECAL, W.L., LIFT UP/DOWN
6	GO340	DECAL, W.L., TILT UP/DOWN
7	GO325	PLATE, BEARING
8	GX329	CROSS SHAFT
9	HE30	GUARD, SPLASH CONTROL
10	EC127	DECAL, WINCH DIRECTIONAL
11	HE29	BRACKET, R.H. FENDER
12	FC110	CROSS SHAFT, WRECKER
13	GR434	PUSH ROD, 8-1/4" (TILT W.L.)
14	GR435	PUSH ROD, 9-1/8" (LIFT W.L.)
15	DE1476	COTTER PIN, 3/32" X 3/4"
16	ZZ148	CLEVIS PIN, 1/4"
17	GR436	PUSH ROD, 10" (EXTEND W.L.)
18	GV132	PUSH ROD, 7-1/8" (WRECKER WINCH)
19	DE1394	LOCK WASHER, HELICAL, 3/8"

ID NO.	PART NO.	DESCRIPTION
-----------	-------------	-------------

20	DE1016	HEX NUT, 3/8"-16
21	HE28	BRACKET, L.H. FENDER
22	DE1358	FLAT WASHER, 1/4"
23	DE1388	LOCK WASHER, HELICAL, 1/4"
24	DE1010	HEX NUT, 1/4"-20
25	GO332	BEARING, PLASTIC
26	GO333	WASHER, NYLON
27	DE1486	COTTER PIN, 1/8" X 1-1/4"
28	DE1160	HEX NUT, 3/8"-24
29	GO331	SLEEVE
30	GO330	EYEBOLT, 3/8"-24 X 2-1/2"
31	DE1472	COTTER PIN, 1/16" X 7/16"
32	GV18	YOKE END, 3/8"-24
33	GV19	CLEVIS PIN, 3/8"
34	DE1206	HEX NUT, JAM, 3/8"-24
35	BJ401	KNOB, 1/2"-13
36	DE1180	HEX NUT, JAM, 1/2"-13
37	GO324	LEVER ROD

# Parts for Protech Systems

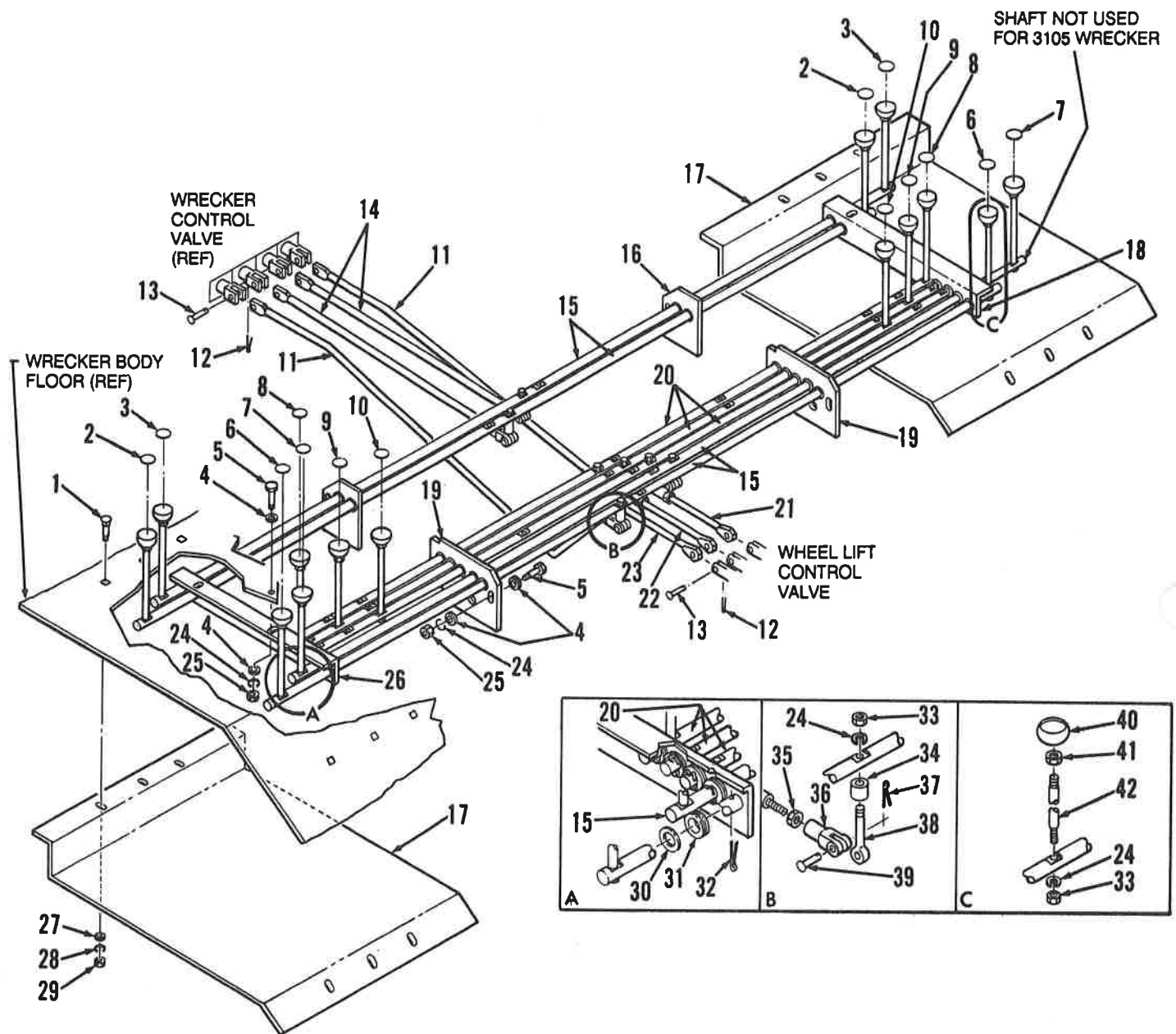


Figure 11. Control Kit (HG12) For PT3105B System (For Use with Wheel Lift and 3105B Wrecker on 460B Body)  
Control Kit (HG44) for PT 3210 System (For Use with Wheel Lift and 3210 Wrecker on 460B Body).



## Parts for Protech Systems

Parts List for Figure 11.  
Control Kit (HG12) For PT3105B System (For Use With  
Wheel Lift and 3105B Wrecker on 460B Body)

ID NO.	PART NO.	DESCRIPTION
-----------	-------------	-------------

1	DE952	BOLT CARRIAGE, 1/4"-20 X 3/4"
2	EC129	DECAL, BOOM IN/OUT
3	EC128	DECAL, BOOM UP/DOWN
4	DE1365	FLAT WASHER, 3/8"
5	DE454	CAP SCREW, HEX HD, GRD 5, 3/8"-16 X 1"
6	EF35	DECAL, WINCH LEFT, IN/OUT (3210)
	EC127	DECAL, WINCH, IN/OUT (3105)
7	EF36	DECAL, WINCH RIGHT, IN/OUT (3210)
8	GX241	DECAL, WHEEL LIFT, EXTEND IN/OUT
9	GX240	DECAL, WHEEL LIFT, LIFT UP/DOWN
10	GO340	DECAL, WHEEL LIFT, TILT UP/DOWN
11	HE33	PUSH ROD ASSY, WINCH FUNCTIONS
12	DE1476	COTTER PIN, 3/32" X 3/4"
13	ZZ148	PIN, ROD END YOKE
14	HE31	PUSH ROD ASSY, BOOM FUNCTIONS
15	FC110	CROSS SHAFT, WRECKER
16	GO334	PLATE, BEARING
17	HE30	GUARD, SPLASH CONTROL
18	HE29	BRACKET, R.H. FENDER
19	GO325	PLATE, BEARING
20	GX329	CROSS SHAFT, WHEEL LIFT
21	GR434	PUSH ROD, 8-1/4" (TILT)

ID NO.	PART NO.	DESCRIPTION
-----------	-------------	-------------

22	GR435	PUSH ROD, 9-1/8" (LIFT)
23	GR436	PUSH ROD, 10" EXTEND
24	DE1394	LOCK WASHER, HELICAL, 3/8"
25	DE1016	HEX NUT, 3/8"-16
26	HE28	BRACKET, L.H. FENDER
27	DE1358	FLAT WASHER, 1/4"
28	DE1388	LOCK WASHER, HELICAL, 1/4"
29	DE1010	HEX NUT, 1/4"-20
30	GO333	WASHER, NYLON
31	GO332	BEARING, PLASTIC
32	DE1486	COTTER PIN, 1/8" X 1-1/4"
33	DE1160	HEX NUT, 3/8"-24
34	GO331	SLEEVE
35	DE1206	HEX NUT, JAM, 3/8"-24
36	GV18	YOKE END, 3/8"-24
37	DE1472	COTTER PIN, 1/16" X 7/16"
38	GO330	EYEBOLT, 3/8"-24 X 2-1/2"
39	GV19	CLEVIS PIN, 3/8"
40	BJ401	KNOB, 1/2"-13
41	DE1180	HEX NUT, JAM, 1/2"-13
42	GO324	LEVER ROD

# Parts for Protech Systems

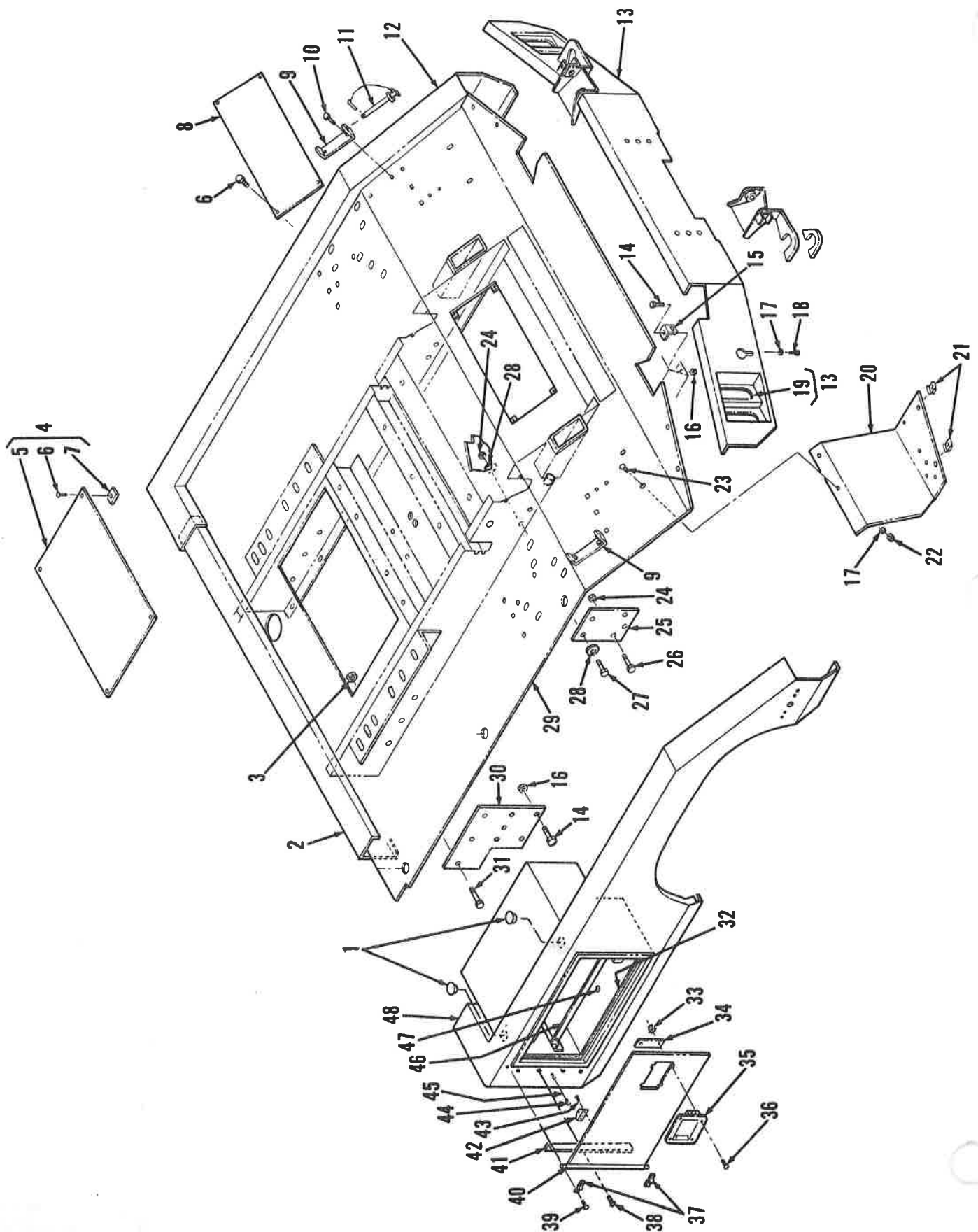


Figure 12. 460B Body Parts.

# Parts for Protech Systems

## Parts List for Figure 12. 460B Body Parts

ID NO.	PART NO.	DESCRIPTION	ID NO.	PART NO.	DESCRIPTION
1	HB76	FINISHING PLUG (1-1/2" DIA HOLE)	26	DE462	CAP SCREW, HEX HD, GRD 5, 1/2"-13 X 1-3/4"
2	HB35	PANEL ASSY, FRONT	27	DE460	CAP SCREW, HEX HD, GRD 5, 1/2"-13 X 1-1/2"
3	DE1251	NUT, SELF-LOCK, 3/4"-10	28	BS166	WASHER, HARDENED, 1/2"
4	HB51	KIT, WRECKER OPENING COVER	29	HB116	PLATFORM ASSY
5	HB50	COVER, WRECKER OPENING	30	GP7	PLATE, MOUNTING
6	DE451	CAP SCREW, HEX HD, GRD 5, 3/8"-16 X 3/4"	31	DE481	CAP SCREW, HEX HD, GRD 5, 3/4"-10 X 1-3/4"
7	GP223	TAB, COVER MOUNTING	32	HB80	WEATHER STRIPPING
8	HB30	ACCESS COVER, CONTROL VALVE	33	DE1334	NUT, HEX & STAR WASHER COMB, #8-32
9	HB81	BRACKET, TOW SLING STORAGE	34	CP285	PLATE, LATCH RETAINING
10	DE740	SCREW, SELF-TAPPING, HEX HD, 3/8"-16 X 3/4"	35	MM529	LATCH, SIDE DOOR, KEY LOCKING
11	HB40	TOW SLING PIN & RETAINER ASSY	36	DE702	SCREW, MACHINE, RD PHILLIPS HD, #8-32 X 1/2"
12	HB39	PANEL ASSY, SIDE, RIGHT	37	CP268	HINGE
13	HB120	TAIL-GATE ASSY, WELDED	38	DE1716	POP RIVET, 5/32" DIA
14	DE470	CAP SCREW, HEX HD, GRD 5, 5/8"-11 X 1-3/4"	39	DE1572	POP RIVET, 1/4" DIA
15	CL158	ANGLE, BODY MOUNTING	40	HB71	DOOR ASSY, TOOL COMPARTMENT
16	DE1247	HEX NUT, SELF-LOCK, 5/8"-11	41	HB73	ANGLE, DOOR, SPLASH GUARD
17	DE1358	WASHER, FLAT, 1/4"	42	HB79	BRACKET, DOOR STOP CABLE
18	DE1861	CAP SCREW, HEX HD, GRD 5, 1/4"-20 X 3/4"	43	DE1573	POP RIVET, 3/16" DIA
19	HB24	BRACKET, TAIL LIGHT	44	H25-57	"S" HOOK
20	HB82	MUD GUARD, LEFT	45	H25-91	CABLE ASSY
	HB83	MUD GUARD, RIGHT	46	HB62	TRAY TOOL COMPARTMENT
21	HB94	PANEL NUT, SPECIAL, 1/4"-20	47	CZ15	GROMMET, RUBBER (1/2" DIA HOLE)
22	DE1237	HEX NUT, SELF-LOCK, 1/4"-20	48	HB38	PANEL ASSY, SIDE, LEFT
23	DE952	CARRIAGE BOLT, 1/4"-20 X 3/4"			
24	DE1246	HEX NUT, SELF-LOCK, 1/2"-13			
25	CP411	MOUNTING BRACKET			

# Parts for Protech Systems

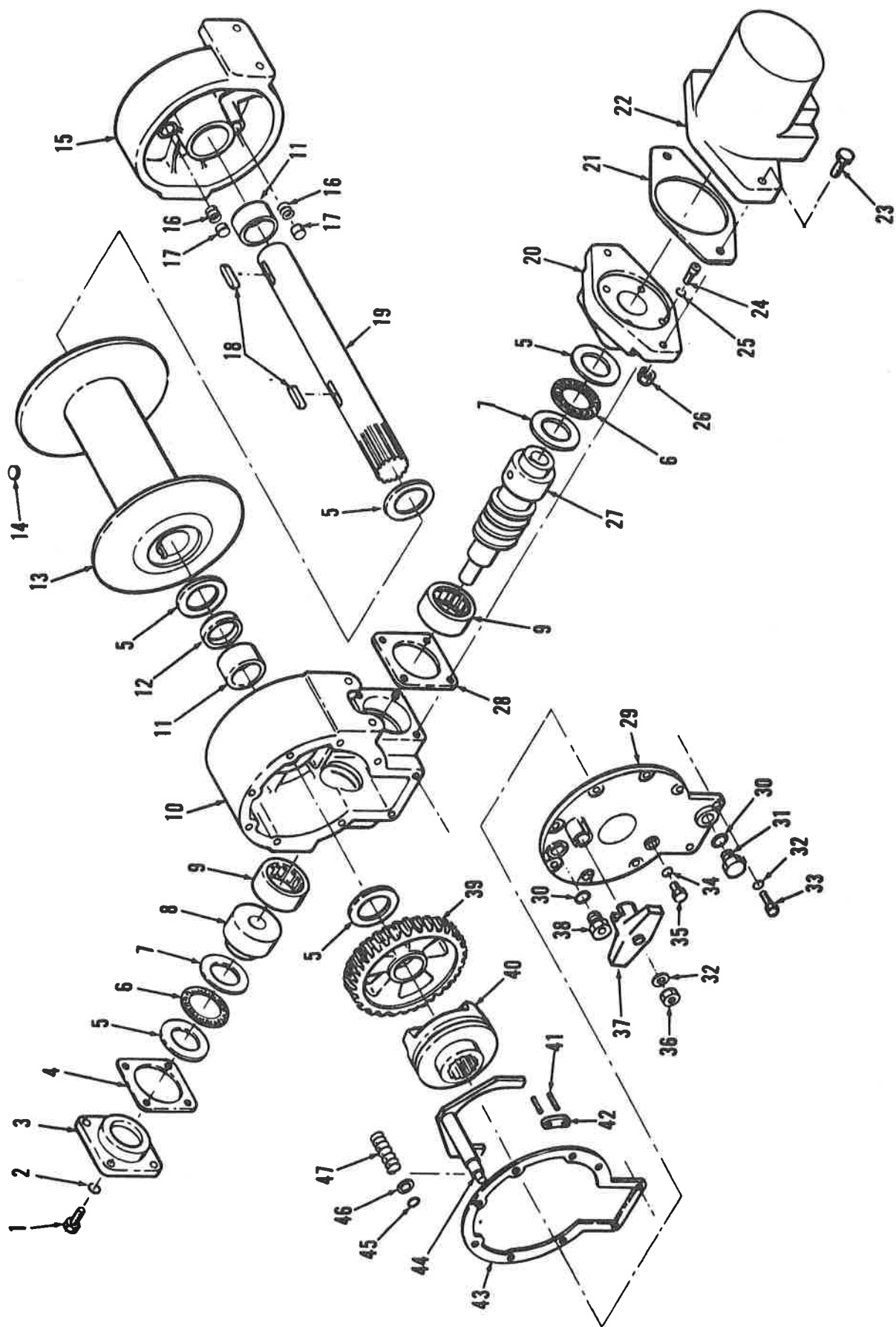


Figure 13. Winch Assembly GV73 with Motor for PT1102 System  
(For Use with Wheel Lift and 1102 Wrecker on 460B Body).

## Parts for Protech Systems

Parts List for Figure 13.

Winch Assy GV73 With Motor For PT1102 System (For Use  
With Wheel Lift and 1102 Wrecker on 460B Body)

ID NO.	PART NO.	DESCRIPTION
-----------	-------------	-------------

1	DE454	CAP SCREW, HEX HD, GRD 5, 3/8"-16 X 1"
2	DE1394	LOCKWASHER, HELICAL
3	CK204	BEARING RETAINER
4	CK177	GASKET
5	CK197	THRUST RACE
6	CK207	THRUST BEARING
7	CK208	THRUST RACE
8	CK188	BEARING ADAPTER
9	CK196	NEEDLE BEARING
10	CK195	WORM HOUSING
11	CK194	JOURNAL BEARING
12	CK199	OIL SEAL
13	CK230	CABLE DRUM
14	CK203	CABLE ANCHOR
15	CK193	SUPPORT SHROUD
16	CK185	DRAG BRAKE SPRING
17	CK187	DRAG BRAKE DISC
18	CK184	KEY
19	CK229	CABLE DRUM SHAFT
20	GH215	MOTOR ADAPTER
21	GH222	MOTOR GASKET
22	GV72	HYDRAULIC MOTOR
23	GH218	CAP SCREW, HEX HD, GRD 8
24	DE504	CAP SCREW, SOC HD, 3/8"-16 X 1"

ID NO.	PART NO.	DESCRIPTION
-----------	-------------	-------------

25	GH220	LOCKWASHER
26	DE1208	HEX NUT, JAM
27	GH213	WORM
28	CK177	BEARING RETAINER GASKET
29	CK192	WORM COVER
30	CK176	"O"-RING
31	CK201	OIL PLUG
32	DE1388	LOCKWASHER, HELICAL
33	CK205	MACHINE SCREW, HEX WASHER HD, GD 5
34	CK209	"O"-RING
35	CK202	OIL PLUG
36	DE1010	HEX NUT, 1/4"-20
37	GH217B	CLUTCH HANDLE
38	CK200	VENT PLUG
39	GH214	WORM GEAR
40	GH216	CLUTCH
41	CK178	ROLL PIN
42	CK210	FRICTION PLATE
43	GH223	WORM COVER GASKET
	CK189	WORM COVER GASKET
44	CK225	SHIFTER ASSEMBLY
45	CK179	"O"-RING
46	CK198	THRUST RACE
47	CK186	CLUTCH SPRING

# Parts for Protech Systems

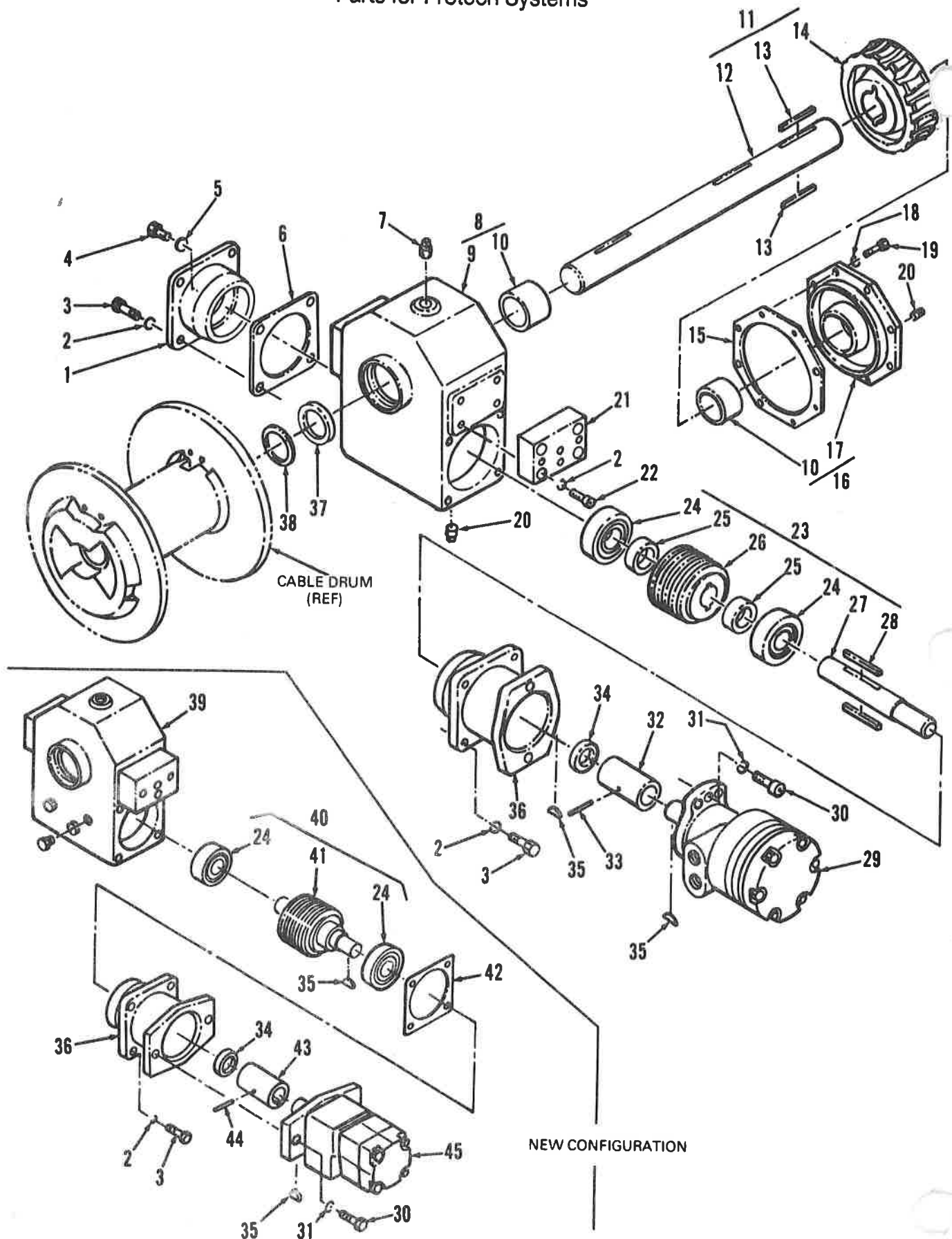


Figure 14. Transmission with Motor (GS32B) for 3105 Wrecker.

## Parts for Protech Systems

Parts List for Figure 14.

Transmission With Motor (GS32B) For 3105 Wrecker

ID NO.	PART NO.	DESCRIPTION
-----------	-------------	-------------

1	ET165	CARRIER BEARING
2	DE1394	LOCKWASHER, HELICAL, ZC PL, 3/8"
3	DE456	CAP SCREW, HEX HD, GRD 5, ZC PL, 3/8"-16 X 1-1/4"
4	DE18	CAP SCREW, HEX HD, GRD 2, 3/8"-16 X 1/2"
5	B159	WASHER, COPPER 3/8"
6	ET186	GASKET, BEARING CARRIER
7	ET188	PLUG, VENTED PIPE
8	G089	HOUSING ASSY, COMPLETE
9	G0109	HOUSING
10	ZZ342	BUSHING, WORM HOUSING
11	G055	GEAR ASSY, WORM
12	G040	SHAFT, WORM GEAR
13	ZZ347	KEY, CABLE DRUM SHAFT
14	ZZ304	GEAR, WORM
15	ET169	GASKET
16	ET241	PLATE ASSY, END
17	ET164	BEARING COVER AND CARRIER
18	DE1391	LOCKWASHER, HELICAL, ZC PL, 5/16"
19	DE21	CAP SCREW, HEX HD, GRD 2, 5/16"-18 X 7/8"
20	CE1588	PIPE PLUG, SQ HD, 3/8"
21	G03	BLOCK, SPACER
22	DE504	CAP SCREW, SOCKET HEAD, 3/8"-16 X 1"
23	ET245	SHAFT ASSY, WORM
24	FF158	BEARING, BALL, WORM SHAFT

ID NO.	PART NO.	DESCRIPTION
-----------	-------------	-------------

25	ET180	SPACER
26	B125	WORM
27	ET167	WORM SHAFT
28	ZZ346	KEY, WORM
29	G080	MOTOR
30	D0505	CAP SCREW, SOCKET HEAD, 1/2"-13 X 1-1/4"
31	DE1397	LOCKWASHER, HELICAL, ZC PL, 1/2"
32	FB204	COUPLER, MOTOR & WINCH
33	FB205	PIN, COUPLER
34	4646B	SEAL, OIL, CLUTCH SHAFT
35	1028	KEY, WOODRUFF 1/4" X 7/8"
36	ET161	CARRIER BEARING, W/ HYDRAULIC MOTOR MOUNT
37	ET179	SEAL, WORM
38	GS31	SPACER
39	G089B	HOUSING ASSY, COMP, INTERCHANGEABLE WITH INDEX NO. 8 & 21
40	ET245B	WORM SHAFT ASSY, INTERCHANGEABLE WITH INDEX NO. 23
41	G0218	WORM
42	ET186	GASKET, BEARING CARRIER
43	G0239	COUPLER, MOTOR & WINCH, USE WITH INDEX NO. 45
44	G0238	PIN, COUPLER, USE WITH INDEX NO. 43
45	G0240	MOTOR (ROLLER STATOR)
	G0231	SEAL KIT FOR INDEX NO. 45

# Parts for Protech Systems

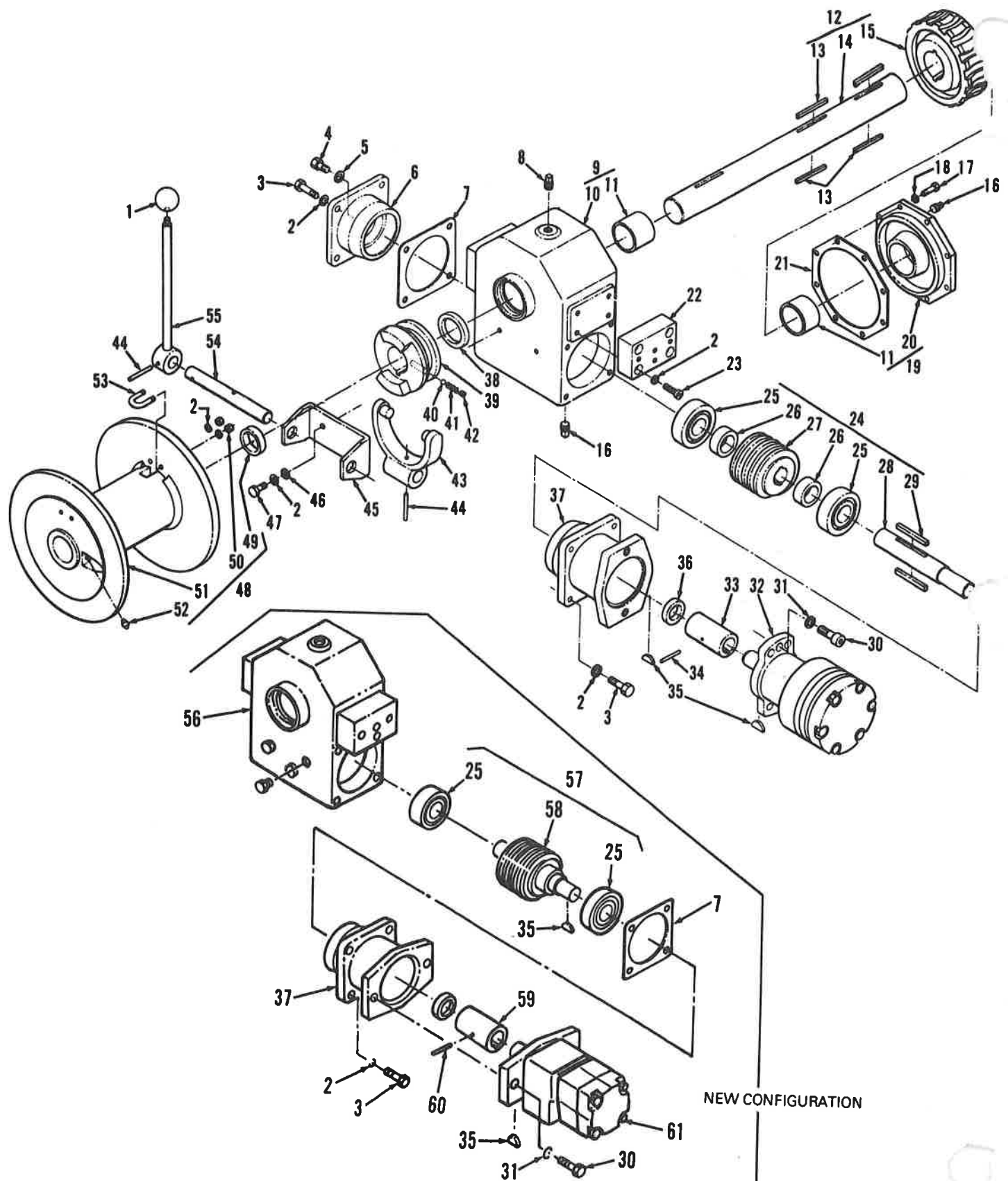


Figure 15. Transmission with Motor  
(GO103B R.H. - GO106B L.H.) for 3210 Wrecker.



## Parts for Protech Systems

Parts List for Figure 15.

Transmission With Motor (G0103B R.H. - G0106B L.H.)

ID NO.	PART NO.	DESCRIPTION
-----------	-------------	-------------

1	EY896	KNOB, CONTROL HANDLE
2	DE1394	LOCKWASHER, HELICAL, ZC PL, 3/8"
3	DE456	CAP SCREW, HEX HD, GRD 5, ZC PL, 3/8"-16 X 1-1/4"
4	DE18	CAP SCREW, HEX HD, GRD 2, 3/8"-16 X 1/2"
5	B159	WASHER, COPPER, 3/8"
6	ET165	CARRIER, BEARING
7	ET186	GASKET, BEARING CARRIER
8	ET188	PLUG, VENTED PIPE
9	G089	HOUSING ASSY, COMP
10	G0109	HOUSING
11	ZZ342	BUSHING, WORM HOUSING
12	G055	GEAR ASSY, WORM
13	ZZ347	KEY, CABLE DRUM SHAFT
14	G040	SHAFT, WORM GEAR
15	ZZ304	GEAR, WORM
16	CE1588	PIPE PLUG, SQ HD, 3/8"
17	DE21	CAP SCREW, HEX HD, GRD 2, 5/16"-18 X 7/8"
18	DE1391	LOCKWASHER, HELICAL, ZC PL, 5/16"
19	ET241	PLATE ASSY, END
20	ET164	BEARING COVER AND CARRIER
21	ET169	GASKET
22	G03	BLOCK, SPACER
23	DE504	CAP SCREW, SOCKET HD, 3/8"-16 X 1"
24	ET245	SHAFT ASSY, WORM
25	FF158	BEARING, BALL, WORM SHAFT
26	ET180	SPACER
27	B125	WORM
28	ET167	WORM SHAFT
29	ZZ346	KEY WORM
30	DE505	CAP SCREW, SOCKET HEAD, 1/2"-13 X 1-1/4"
31	DE1397	LOCKWASHER, HELICAL, ZC PL, 1/2"
32	G080	MOTOR
33	FB204	COUPLER, MOTOR & WINCH

ID NO.	PART NO.	DESCRIPTION
-----------	-------------	-------------

34	FB205	PIN
35	1028	KEY, WOODRUFF, 1/4" X 7/8"
36	4646B	SEAL, OIL, CLUTCH SHAFT
37	ET161	CARRIER BEARING, WITH HYDRAULIC MOTOR MOUNT
38	ET179	SEAL, WORM GEAR SHAFT
39	ET226	CLUTCH, SLIDING
40	ET185	BALL
41	ET184	SPRING
42	DE846	SET SCREW, HEX, SOCKET, CUP PT, 5/16"-18 X 5/16"
43	G059	FORK, COUPLING SHIFTER
44	ET189	ROLL PIN
45	G041	BRACKET, CLUTCH SHIFTER
46	DE1366	FLATWASHER, STD, ZC PL, 3/8"
47	DE451	CAP SCREW, HEX HD, GRD 5, ZC PL, 3/8"-16 X 3/4"
48	G077	DRUM ASSY
49	ZZ426	RING, RETAINING
50	DE1016	HEX NUT, ZC PL, 3/8"-16
51	G088	DRUM, CABLE
52	4709	GREASE FITTING, STRAIGHT
53	1034-D	U-BOLT, CABLE CLAMP
54	G059	SHAFT, COUPLING SHIFTER
55	G061	HANDLE ASSY, CLUTCH SHIFTER
56	G089B	HOUSING ASSY, COMP, INTERCHANGEABLE WITH INDEX NO. 9 & 22
57	ET245B	WORM SHAFT ASSY, INTERCHANGEABLE WITH INDEX NO. 24
58	G0218	WORM
59	G0239	COUPLER, MOTOR & WINCH, USE WITH INDEX NO. 61
60	G0238	PIN, COUPLER, USE WITH INDEX NO. 59
61	G0240	MOTOR (ROLLER STATOR)
	G0231	SEAL KIT FOR INDEX NO. 61