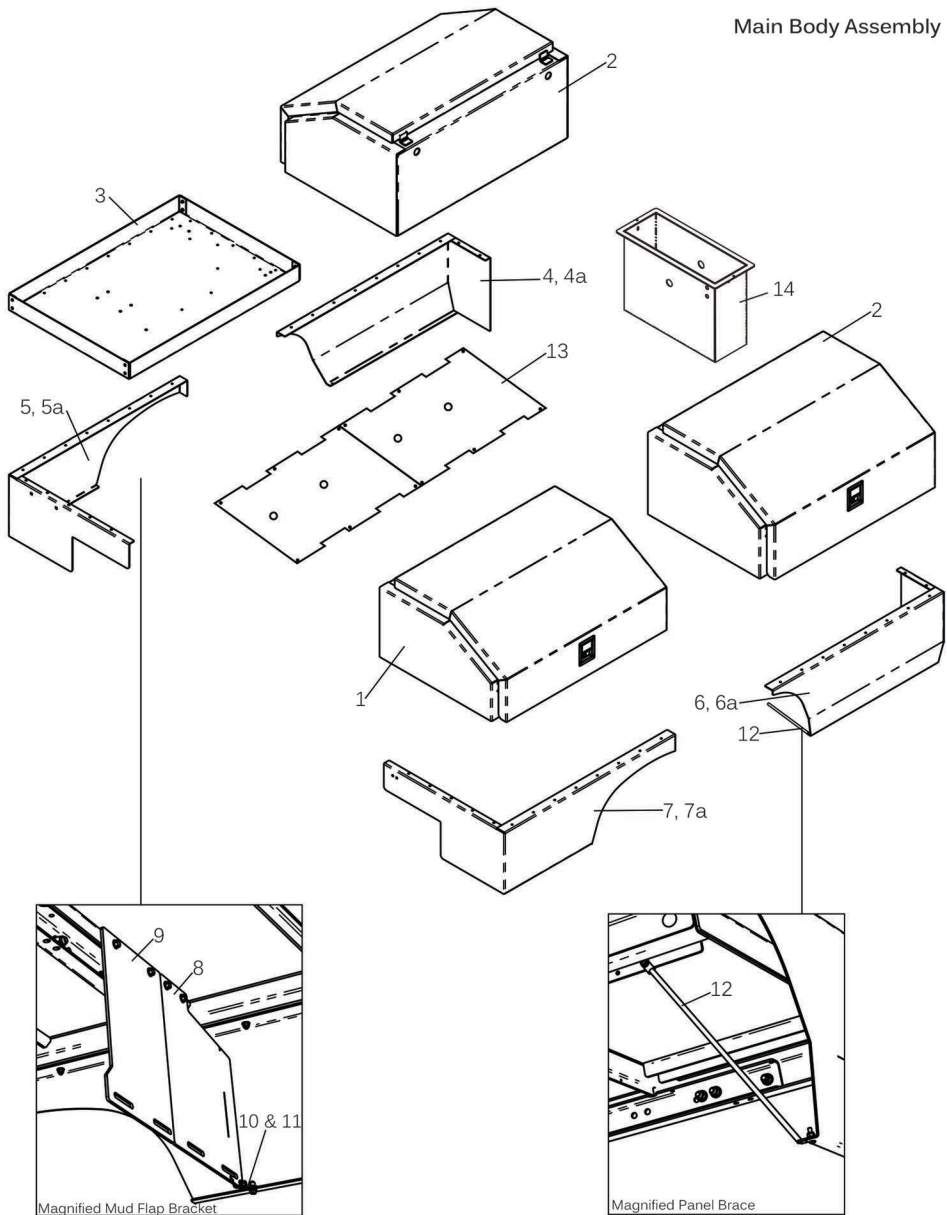


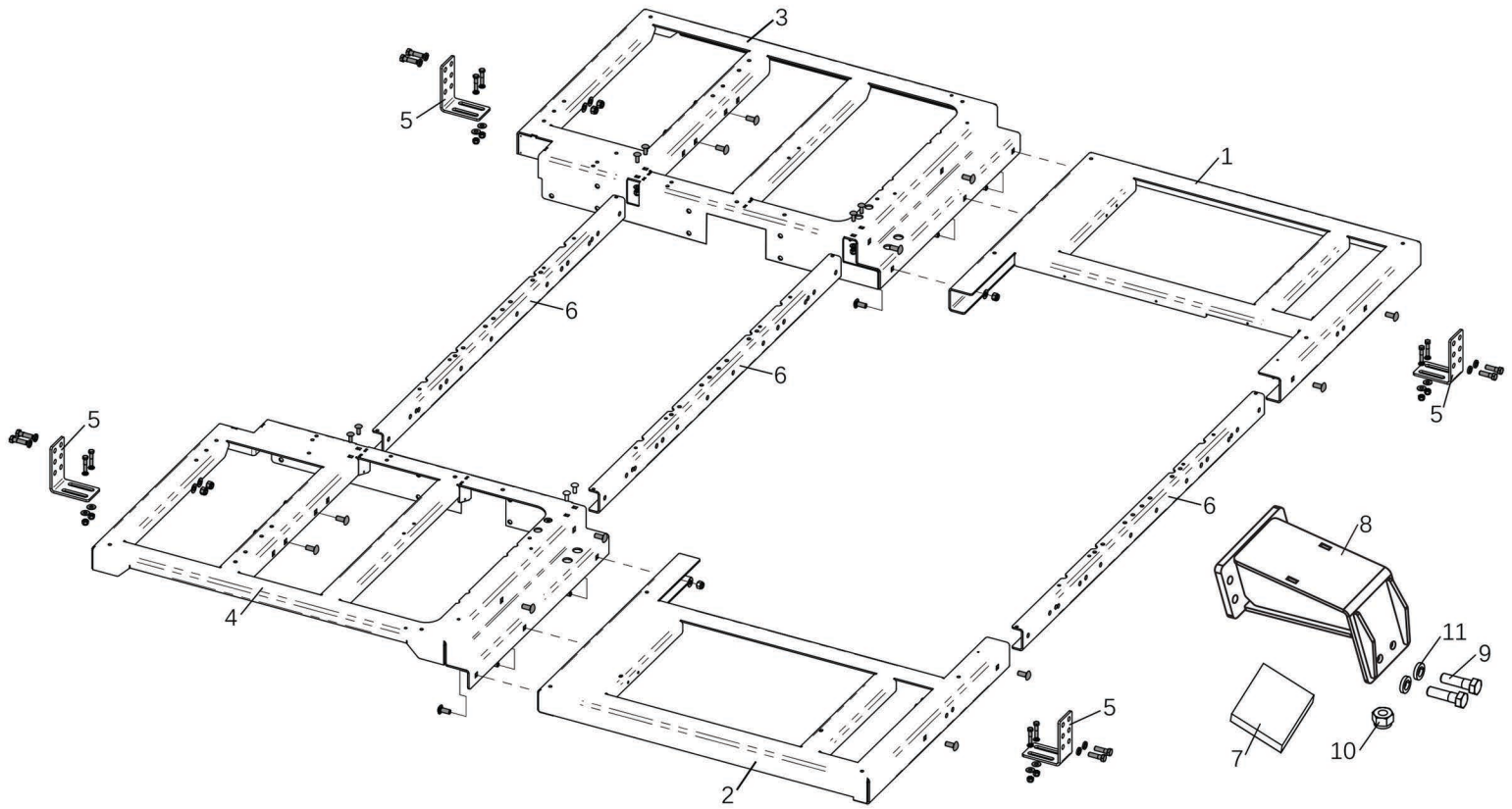
# TSV PARTS MANUAL



### Main Body Assembly

Ref #	Qty Req	Part #	Description
1	1	ZUS-STDBOX	Rear Body Compartment Module
2	2	ZUS-DEEPBOX	Front Body Compartment Module
3	1	ZB110618	Rear Body Equipment Tray
4	1	ZB110628	Fender, Drivers Side Front, 60" C.A.
4a	1	ZB110749	Fender, Drivers Side Front, 56" C.A.
5	1	ZB110626	Fender, Drivers Side Rear, 60" C.A.
5a	1	ZB110747	Fender, Drivers Side Rear, 56" C.A.
6	1	ZB110627	Fender, Passenger Side Front, 60" C.A.
6a	1	ZB110748	Fender, Passenger Side Front, 56" C.A.
7	1	ZB110625	Fender, Passenger Side Rear, 60" C.A.
7a	1	ZB110746	Fender, Passenger Side Rear, 56" C.A.
Not Pictured	1	ZBT80302	Fender Wheel Opening Trim, 9'
Not Pictured	2	ZBT80303	Front Fender Welting, 5'
Not Pictured	2	ZBT80304	Rear Fender Welting, 7'
8	2	ZB110658	Mud Flap Bracket
9	2	ZB110659	Mud Flap Extension Bracket
10	1	ZB110708	Mud Flap Attach Bracket LH
11	1	ZB110709	Mud Flat Attach Bracket RH
12	2	ZB110710	Fender Skirt Diagonal Brace
Not Pictured	1	ZB-HK-083	Mud Flap Hardware Kit
Not Pictured	2	ZB-HK-090	Diagonal Brace Hardware Kit
Not Pictured	4	ZB-HK-077	Fender Skirt Hardware Kit
Not Pictured	4	ZB-HK-078	Body Compartment & Equipment Tray Hardware Kit
13	2	ZB110718	Galvanized Floor Pan
14	1	ZB110650	Compressor Well Box
Not Pictured	1	ZB-HK-081	Compressor Well Box Hardware Kit

## Subframe

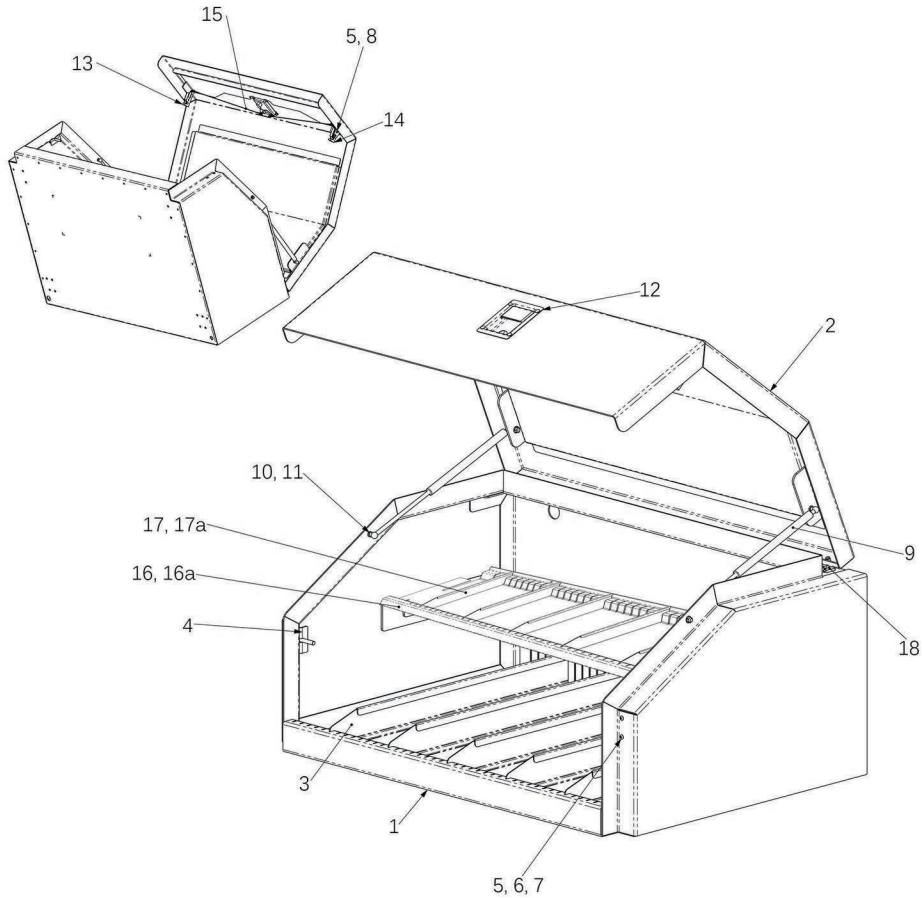


## Subframe

Ref #	Qty Req	Part #	Description
	1	ZUS-SUBFRAME	Subframe Assembly Complete
1	1	ZB110613	Subframe Section, Drivers Side Front
2	1	ZB110615	Subframe Section, Passenger Side Front
3	1	ZB110606	Subframe Section, Drivers Side Rear
4	1	ZB110608	Subframe Section, Passenger Side Rear
5	4	ZB110617	Subframe Mount Bracket
6	3	ZB110616	Subframe Crossmember Channel (See Note)
Not Pictured	1	ZB-HK-076	Subframe Hardware Kit
7	2	12-0725483	Rear Spacer Plate, 3" x 3" x 1/2"
Not Pictured	1	ZBT-FRAME BRACE	Subframe to Truck Frame Brace Kit (Only used on TSV)
8	2	ZB111210	Subframe to Truck Frame Brace (Only used on TSV)
9	12	6060	1/2" x 1-1/2" Coarse Hex Head Bolt
10	24	13270	1/2" Nylock Nut, Coarse
11	24	39879	1/2" SAE Flat Washer

**Note:** TSV's require only 2 Crossmember Channels

## Front Body Compartment



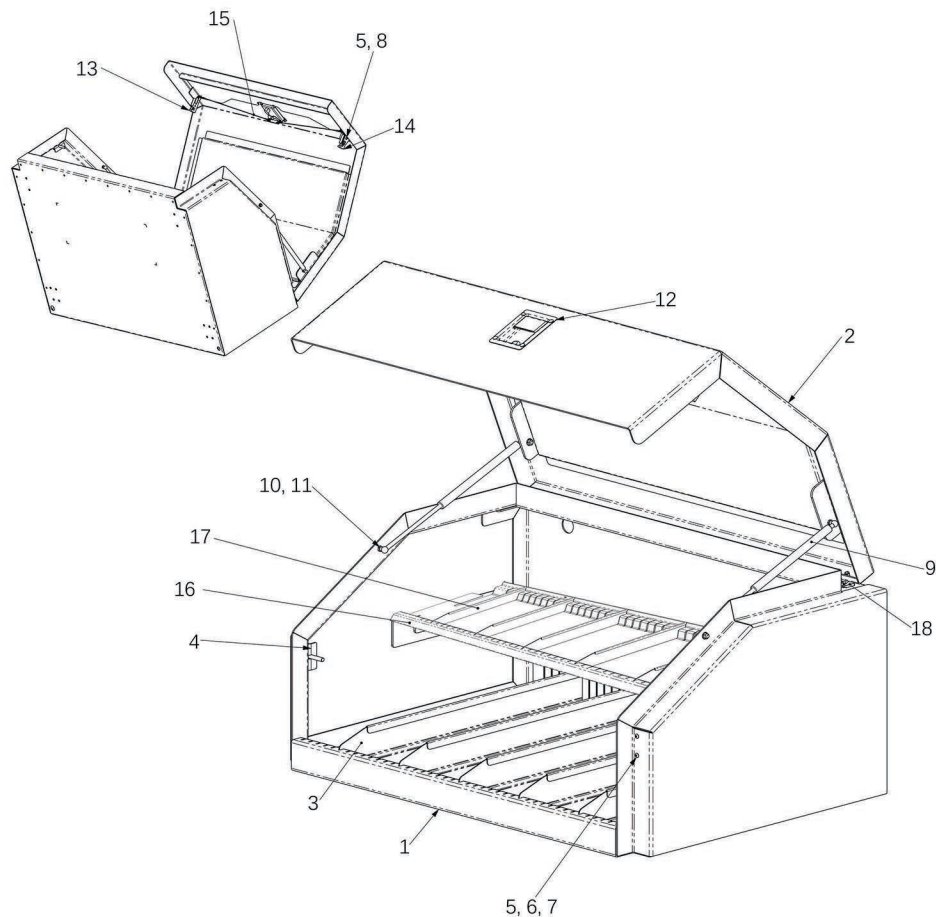
## Front Body Compartment

Ref #	Qty Req	Part #	Description
	2	ZUS-DEEPBOX	Front Body Compartment Module Assembly
	1	ZB110580	Front Body Compartment Module Shell
Not Pictured	1	ZBT80300	Door Seal, 3 Sided
Not Pictured	2	6T-RG-1.5-AL	Louvered Vent, Rear of Compartment
Not Pictured	1	911-0797	Wire Grommet
Not Pictured	1	ZB110668	Wire Cover
Not Pictured	1	ECVCSLLED10	Compartment Light, LED
Not Pictured	2	ZBT80100	Plastic Floor Liner, 23-3/4" x 33-1/4"
Not Pictured	2	ZBT80105	Plastic Slide Liner, 9" x 28"
1	1	ZB110581	Front Body Compartment Base, Without Door
2	1	ZB110579	Front Body Compartment Door
3	5	ZB110577	Body Compartment Dividers
4	2	ZB110665	Door Striker
5	8	BHCP-SS-0250-20-0-750	Allen Head Bolt, Stainless 1/4" x 3/4"
6	4	FW-SAE-SS-0250	Flat Washer, Stainless 1/4"
7	4	HNNL-316SS-0250-20	Nylock Nut, Stainless 1/4"
8	4	LW-EX-SS-0250	External Tooth Lock Washer, Stainless 1/4"
9	6	AC8775	Gas Door Strut, 60 lbs.
9a	2	AC8790	Gas Door Strut, 75 lbs. (See Note)
10	4	AC98	Ball Stud, Gas Door Strut
11	4	HNF-ZP-0313-18	Serrated Flange Lock Nut, Zinc 5/16"
12	1	LA2001-SS	Door Handle Latch
13	1	ZB-P800315-L	Rotary Latch, LH
14	1	ZB-P800315-R	Rotary Latch, RH
15	2	ZB19574	Latch Rod & Clevis Assembly
16	1	ZB110705	Compartment Shelf Assembly, 14" Deep, Dividers Included
16a	1	ZB110820	Optional Compartment Shelf Assembly, 18" Deep, Dividers Included
17	5	ZB110624	Shelf Divider, 14"
17a	5	ZB110806	Shelf Divider, 18"
Not Pictured	1	ZB-HK-089	Shelf Hardware Kit
18	4	H4002BK	Door Hinge
Not Pictured	1	ZB-HK-078	Compartment Mounting Hardware Kit

**Note:** 90 lbs. Door Strut is needed if the door has the Jumper Cable Kit installed on it.



Front Body Compartment, 45"

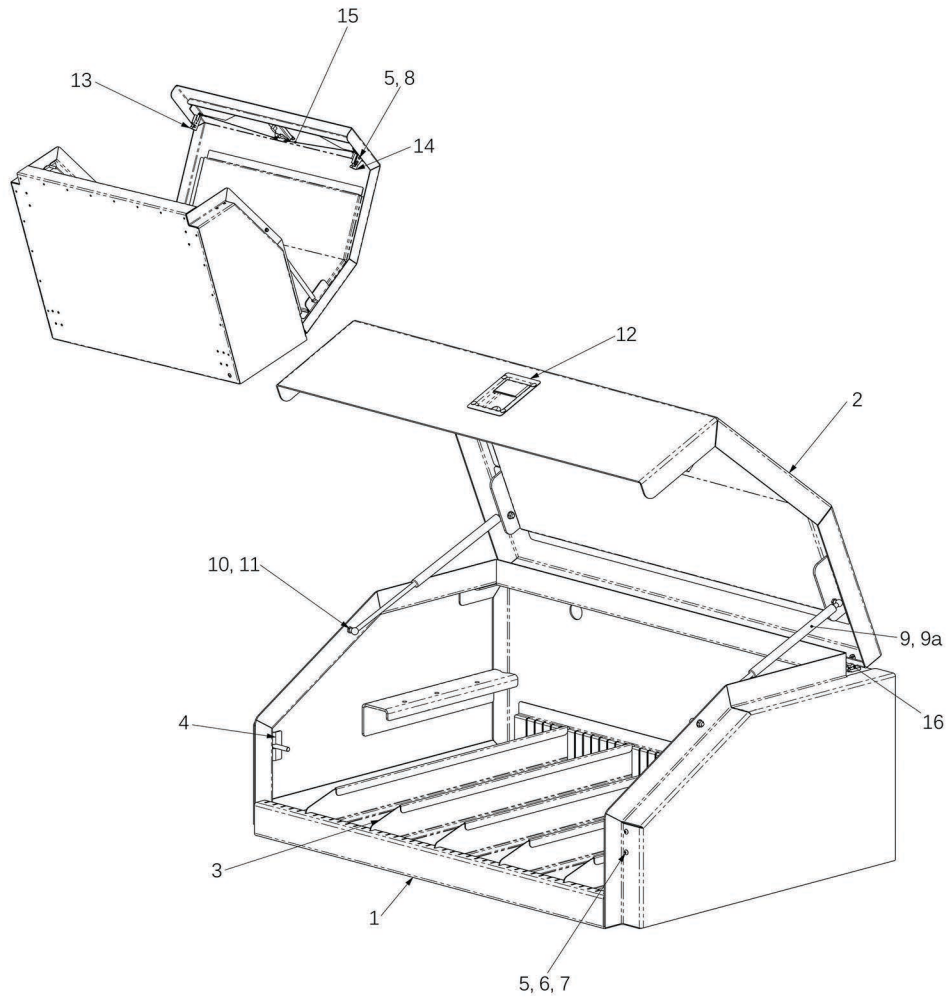


Front Body Compartment, 45"

Ref #	Qty Req	Part #	Description
	2	ZUS-DEEPBOX-45	Front Body Compartment Module Assembly, 45"
	1	ZB110810	Front Body Compartment Module Shell, 45"
Not Pictured	1	ZBT80305	Door Seal, 3 Sided
Not Pictured	2	6T-RG-1.5-AL	Louvered Vent, Rear of Compartment
Not Pictured	1	911-0797	Wire Grommet
Not Pictured	1	ZB110668	Wire Cover
Not Pictured	1	ECVCSLLED10	Compartment Light, LED
Not Pictured	2	ZBT80100	Plastic Floor Liner, 23-3/4" x 33-1/4"
Not Pictured	2	ZBT80105	Plastic Slide Liner, 9" x 28"
1	1	ZB110811	Front Body Compartment Base, Without Door
2	1	ZB110815	Front Body Compartment Door
3	5	ZB110577	Body Compartment Dividers
4	2	ZB110665	Door Striker
5	8	BHCP-SS-0250-20-0-750	Allen Head Bolt, Stainless 1/4" x 3/4"
6	4	FW-SAE-SS-0250	Flat Washer, Stainless 1/4"
7	4	HNNL-316SS-0250-20	Nylock Nut, Stainless 1/4"
8	4	LW-EX-SS-0250	External Tooth Lock Washer, Stainless 1/4"
9	6	AC8775	Gas Door Strut, 75 lbs.
9a	2	AC8790	Gas Door Strut, 90 lbs. (See Note)
10	4	AC98	Ball Stud, Gas Door Strut
11	4	HNF-ZP-0313-18	Serrated Flange Lock Nut, Zinc 5/16"
12	1	LA2001-SS	Door Handle Latch
13	1	ZB-P800315-L	Rotary Latch, LH
14	1	ZB-P800315-R	Rotary Latch, RH
15	2	ZB19574	Latch Rod & Clevis Assembly
16	1	ZB110805	Compartment Shelf Assembly, 14" Deep, Dividers Included
17	5	ZB110624	Shelf Divider, 14"
Not Pictured	1	ZB-HK-089	Shelf Hardware Kit
18	4	H4002BK	Door Hinge
Not Pictured	1	ZB-HK-078	Compartment Mounting Hardware Kit

**Note:** 90 lbs. Door Strut is needed if the door has the Jumper Cable Kit installed on it.

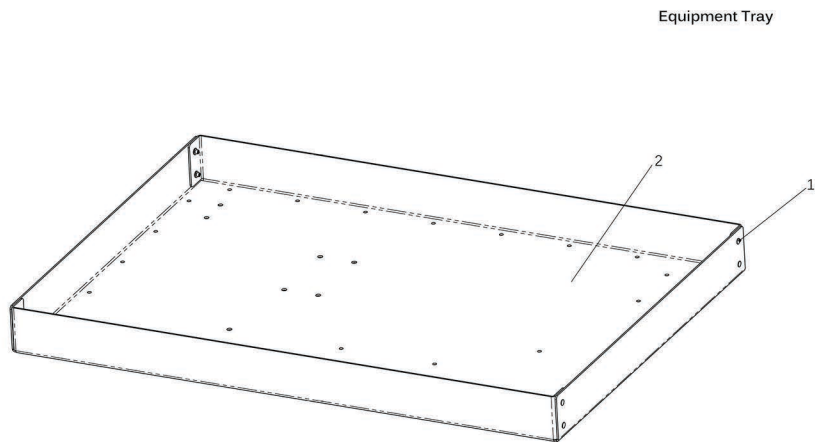
## Rear Body Compartment



## Rear Body Compartment

Ref #	Qty Req	Part #	Description
	1	ZUS-STDBOX	Rear Body Compartment Module Assembly
	1	ZB110575	Rear Body Compartment Module Shell
Not Pictured	1	ZBT80300	Door Seal, 3 Sided
Not Pictured	2	6T-RG-1.5-AL	Louvered Vent, Rear of Compartment
Not Pictured	1	911-0797	Wire Grommet
Not Pictured	1	ZB110668	Wire Cover
Not Pictured	1	ECVCSLLED10	Compartment Light, LED
Not Pictured	2	ZBT80100	Plastic Floor Liner, 23-3/4" x 33-1/4"
1	1	ZB110576	Rear Body Compartment Base, Without Door
2	1	ZB110578	Rear Body Compartment Door
3	5	ZB110577	Body Compartment Dividers
4	2	ZB110665	Door Striker
5	8	BHCP-SS-0250-20-0-750	Allen Head Bolt, Stainless 1/4" x 3/4"
6	4	FW-SAE-SS-0250	Flat Washer, Stainless 1/4"
7	4	HNHL-316SS-0250-20	Nylock Nut, Stainless 1/4"
8	4	LW-EX-SS-0250	External Tooth Lock Washer, Stainless 1/4"
9	6	AC8775	Gas Door Strut, 60 lbs.
9a	2	AC8790	Gas Door Strut, 75 lbs. (See Note)
10	4	AC98	Ball Stud, Gas Door Strut
11	4	HNF-ZP-0313-18	Serrated Flange Lock Nut, Zinc 5/16"
12	1	LA2001-SS	Door Handle Latch
13	1	ZB-P800315-L	Rotary Latch, LH
14	1	ZB-P800315-R	Rotary Latch, RH
15	2	ZB19574	Latch Rod & Clevis Assembly
16	4	H4002BK	Door Hinge
Not Pictured	1	ZB-HK-078	Compartment Mounting Hardware Kit

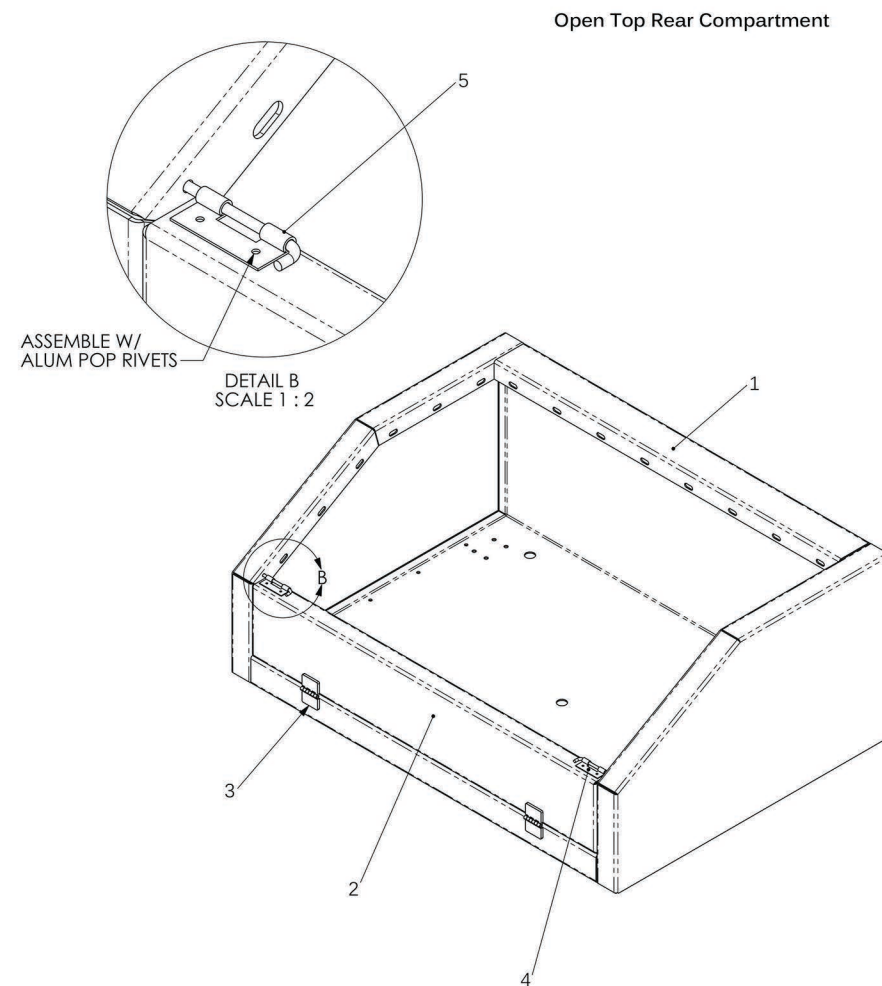
**Note:** 90 lbs. Door Strut is needed if the door has the Jumper Cable Kit installed on it.



Equipment Tray

Equipment Tray

Ref #	Qty Req	Part #	Description
1	1	ZB110618	Equipment Tray
2	2	ZBT80104R	Rubber Mat, Equipment Tray
Not Pictured	1	ZB-HK-078	Equipment Tray Mounting Hardware Kit

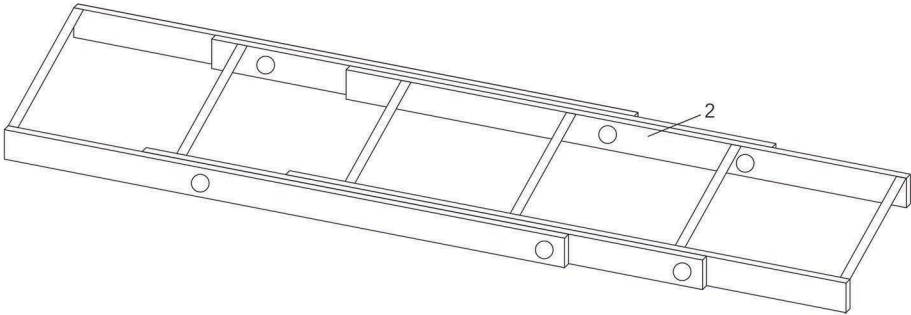
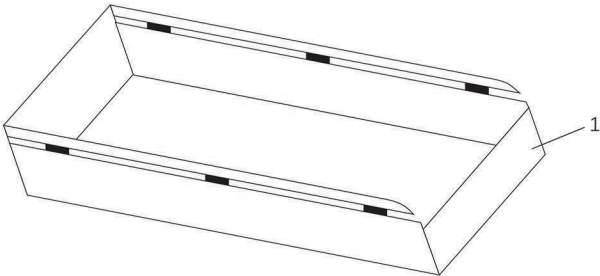
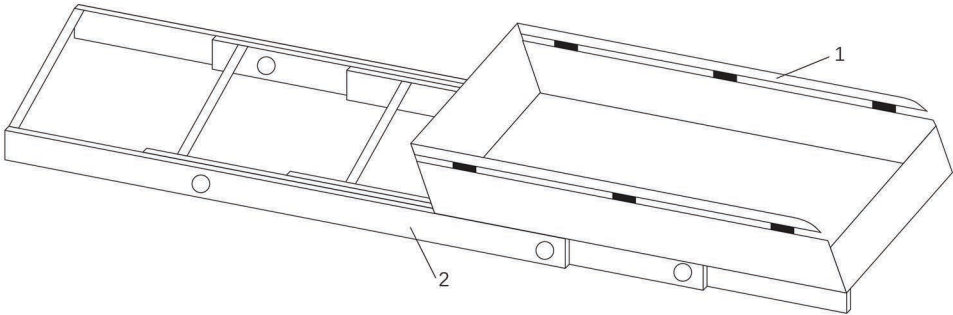


Open Top Rear Compartment

Open Top Rear Compartment

Ref #	Qty Req	Part #	Description
		ZB111175	Optional Open Top Rear Compartment Module
1	1	ZB111176	Open Box Weldment
2	1	ZB111180	Open Box Front Gate
3	2	H4002BK	Gate Hinge
4	1	9596RH02	Latch Hinge, Zinc with Holes, RH
5	1	9596LH02	Latch Hinge, Zinc with Holes, LH
Not Pictured	1	ZB-HK-078	Compartment Mounting Hardware Kit

Sliding Tray Option

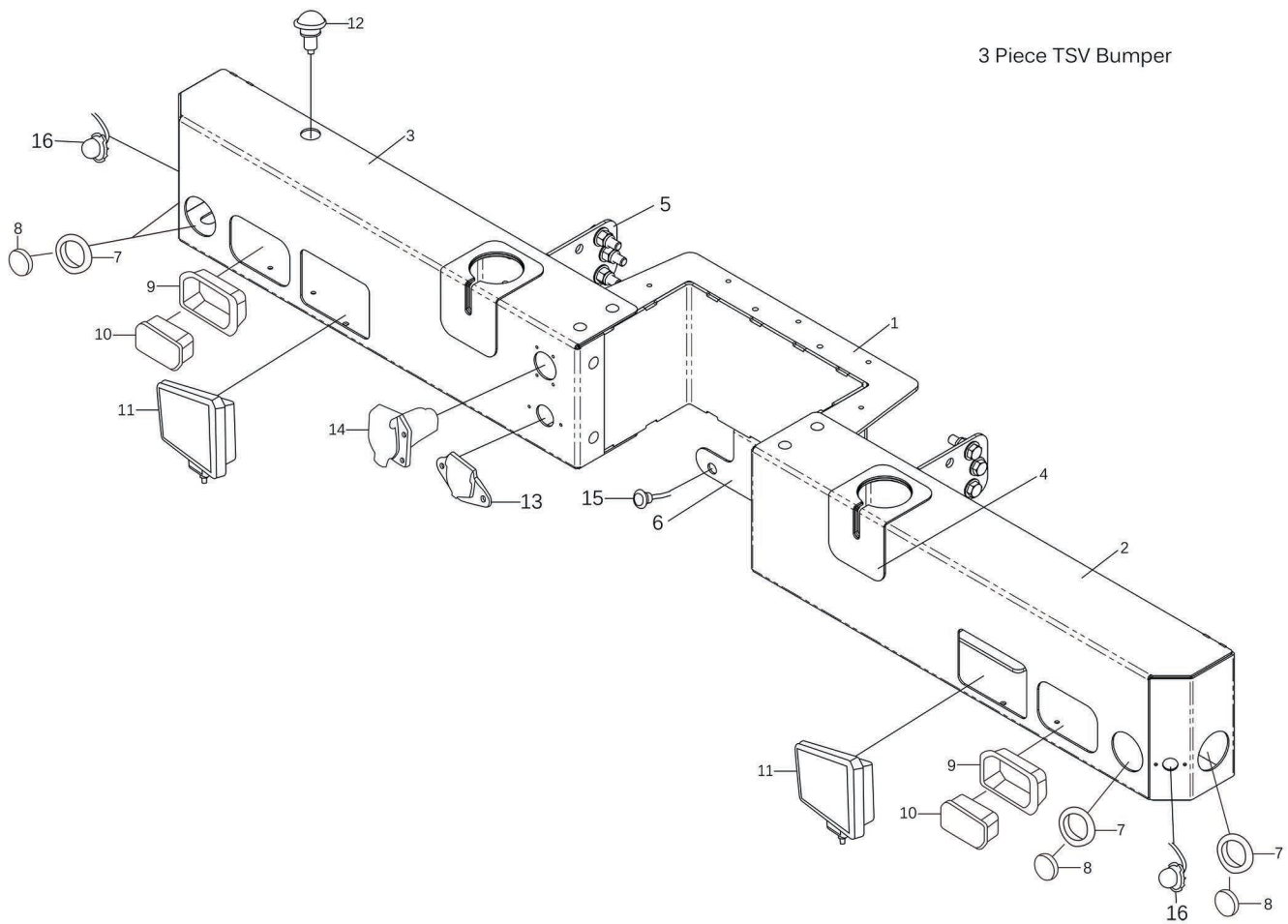


Sliding Tray Option

Ref #	Qty Req	Part #	Description
1	1	ZSB-TRAY-6826	Open Tray
2	1	DG1000-6826	Duraglide Compartment Slide



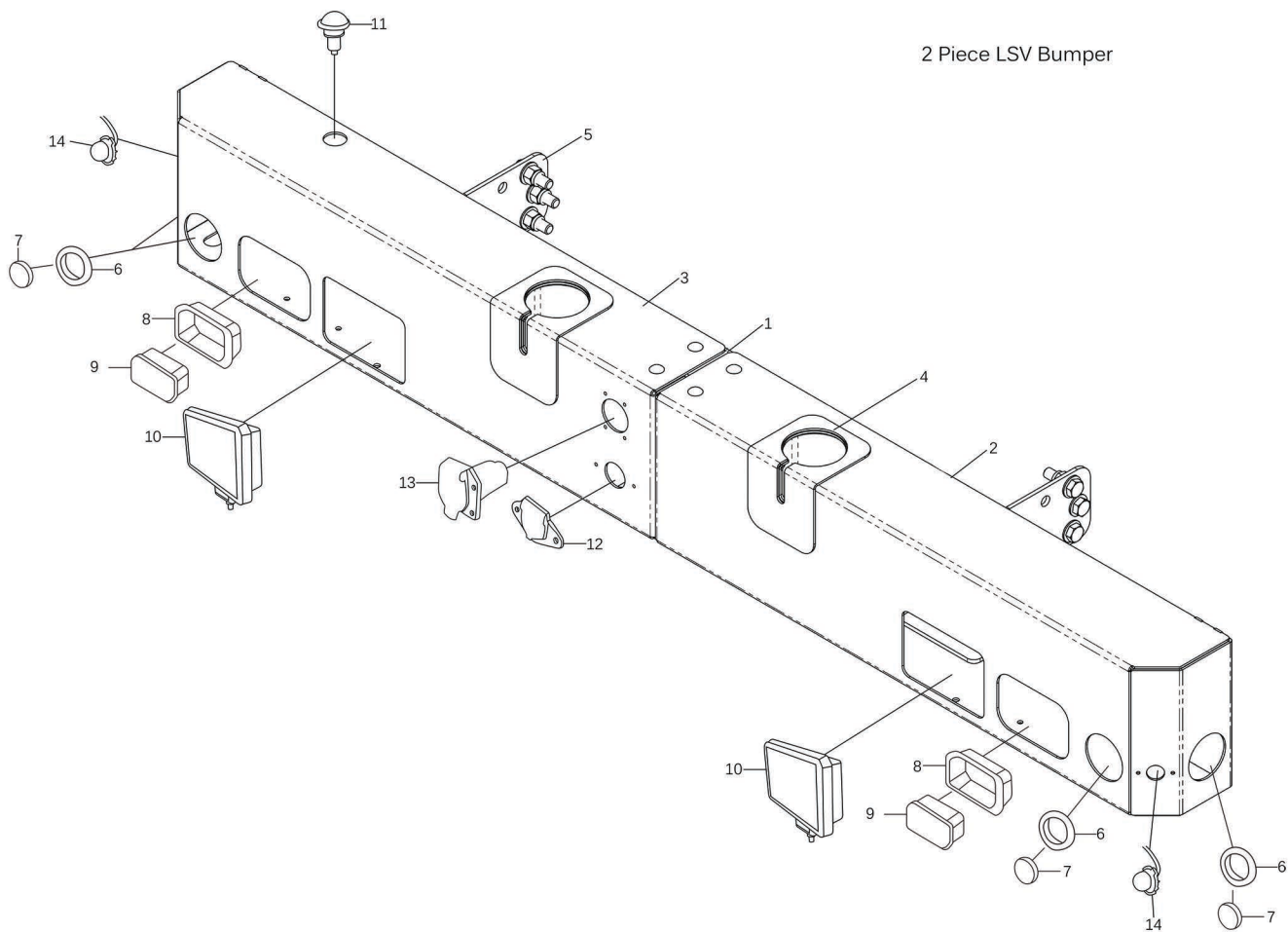
### 3 Piece TSV Bumper



### 3 Piece TSV Bumper

Ref #	Qty Req	Part #	Description
	1	ZUS-BUMPER90	3 Piece Bumper Assembly w/ Lights & Wiring Harness
	1	ZB110630	3 Piece Bumper Assembly Weldment
1	1	ZB110688	Bumper Connector Weldment
2	1	ZB110631	Bumper Weldment, RH
3	1	ZB110633	Bumper Weldment, LH
4	2	ZB110636	Chain Box Protector
5	2	ZB110674	Bumper Mount Bracket
6	1	ZB110707	3-ID Light Bracket
Not Pictured	1	ZB-HK-082	Bumper Hardware Kit
7	4	10702	Grommet, 2-1/2" Marker Light
8	4	10255R	2-1/2" Marker Light, Red, LED
9	2	M45700	Grommet, 3-1/2" x 5" Tail Light
10	2	M42200R	Tail Light, 3-1/2" x 5" Red STT, LED
11	2	MWL-04	Work/Reverse Light, LED
12	1	430W	License Plate Light
13	1	CR-6	4-Way Trailer Plug
14	1	755-1526	7-Way Trailer Plug
15	1	TL33740R	3-ID Light Assembly, Mini LED
16	4	VTX609A	Warning Light, LED w/ Built-In Flasher (See Note)
Not Pictured	1	ZBT110683	Rear Bumper Wire Harness
Not Pictured	1	12-0303061	Back-Up Alarm
Not Pictured	1	PUP-10-JB	12 Position Junction Box

**Note:** 4 Warning Lights supplied with kit, 2 for rear bumper and 2 for the front grille.

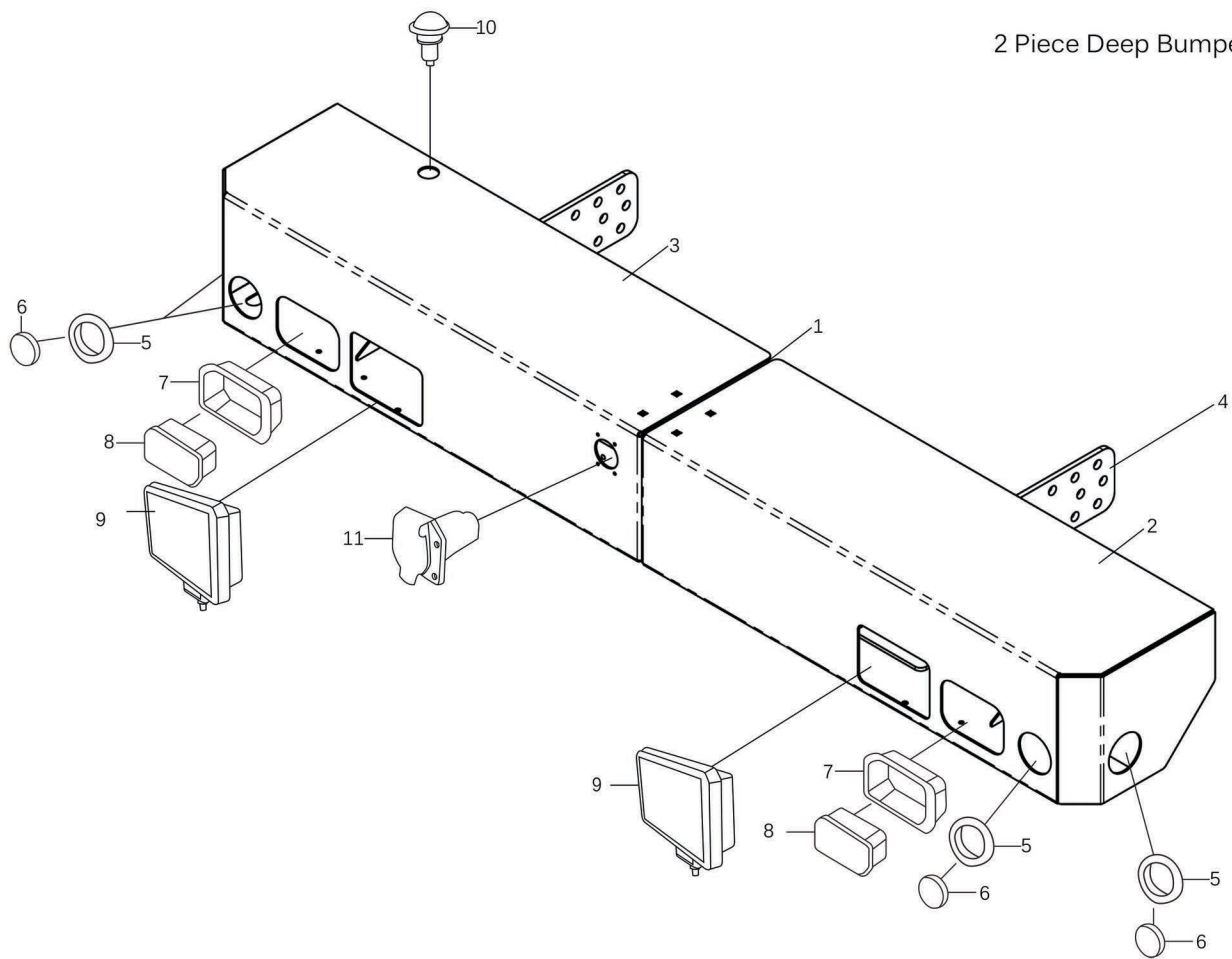


## 2 Piece LSV Bumper

Ref #	Qty Req	Part #	Description
	1	ZUS-BUMPER80	2 Piece Bumper Assembly w/ Lights & Wiring Harness
	1	ZB110745	2 Piece Bumper Assembly Weldment
1	2	ZB110706	Bumper Connector Weldment
2	1	ZB110631	Bumper Weldment, RH
3	1	ZB110633	Bumper Weldment, LH
4	2	ZB110636	Chain Box Protector
5	2	ZB110674	Bumper Mount Bracket
Not Pictured	1	ZB-HK-082	Bumper Hardware Kit
6	4	10702	Grommet, 2-1/2" Marker Light
7	4	10255R	2-1/2" Marker Light, Red, LED
8	2	M45700	Grommet, 3-1/2" x 5" Tail Light
9	2	M42200R	Tail Light, 3-1/2" x 5" Red STT, LED
10	2	MWL-04	Work/Reverse Light, LED
11	1	430W	License Plate Light
12	1	CR-6	4-Way Trailer Plug
13	1	755-1526	7-Way Trailer Plug
14	4	VTX609A	Warning Light, LED w/ Built-In Flasher (See Note)
Not Pictured	1	ZBT110683	Rear Bumper Wire Harness
Not Pictured	1	12-0303061	Back-Up Alarm
Not Pictured	1	PUP-10-JB	12 Position Junction Box

**Note:** 4 Warning Lights supplied with kit, 2 for rear bumper and 2 for the front grille.

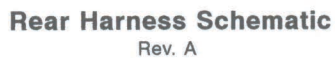
## 2 Piece Deep Bumper



## 2 Piece Deep Bumper

Ref #	Qty Req	Part #	Description
	1	ZSB-110890	2 Piece Deep Bumper Assembly w/ Lights & Wiring Harness
	1	ZB110890	2 Piece Deep Bumper Assembly Weldment
1	2	ZB110706	Bumper Connector Plate
2	1	ZB110891	Bumper Weldment, RH
3	1	ZB110896	Bumper Weldment, LH
4	2	ZB110900	Deep Bumper Mount Bracket
Not Pictured	1	ZB-HK-082	Bumper Hardware Kit
5	4	10702	Grommet, 2-1/2" Marker Light
6	4	10255R	2-1/2" Marker Light, Red, LED
7	2	M45700	Grommet, 3-1/2" x 5" Tail Light
8	2	M42200R	Tail Light, 3-1/2" x 5" Red STT, LED
9	2	MWL-04	Work/Reverse Light, LED
10	1	430W	License Plate Light
11	1	755-1526	7-Way Trailer Plug
Not Pictured	1	ZBT110683	Rear Bumper Wire Harness
Not Pictured	1	12-0303061	Back-Up Alarm
Not Pictured	1	PUP-10-JB	12 Position Junction Box

## Part #: ZBT110682



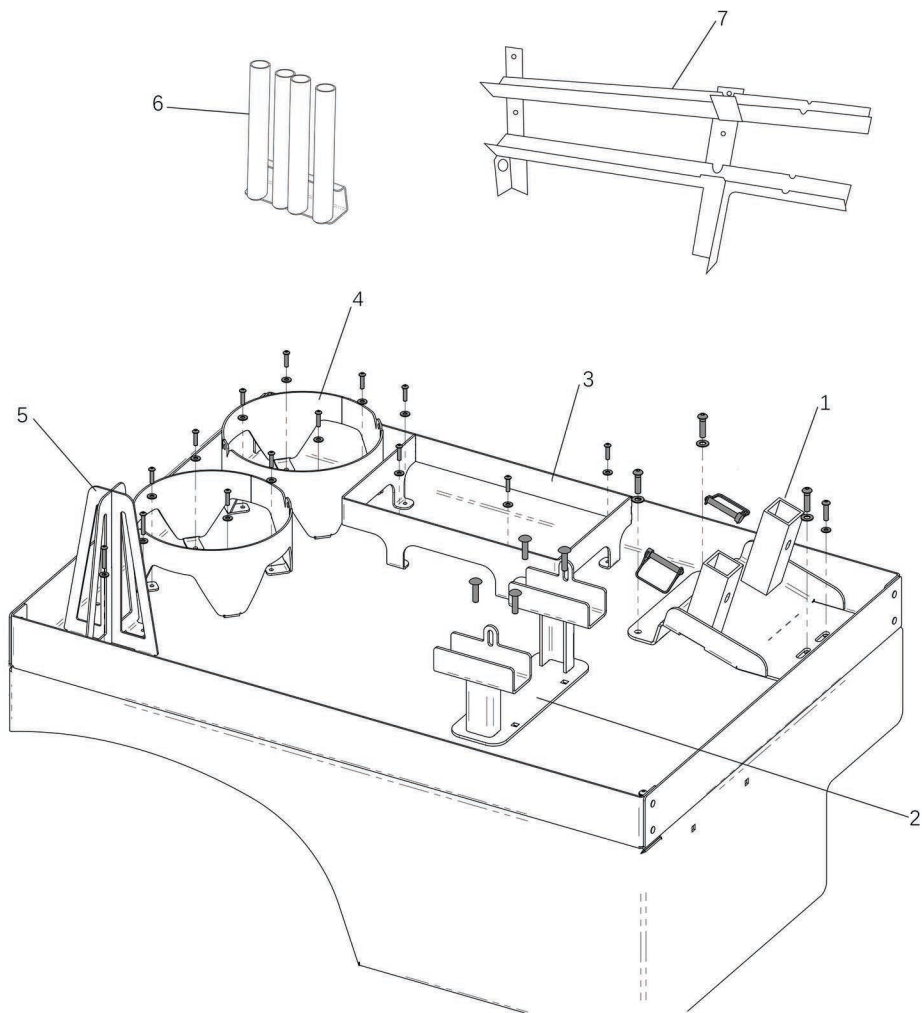
Wiring diagram for the rear harness of a 2002-2004 Ford F150. The diagram shows the connection of 18 AWG wires (Lt Green, Brown, Green, Black, Violet, Yellow) to various components including M3, M4, M5, M6, STT, WR, BA, CR6, and J1. It also shows the connection of 94902 and 94993 connectors to the wires.

M3, M4, M5, & M6= Truck Lite #94902
STT= Stop/Tail/Turn Light
LP= License Plate
BA= Back Up Alarm
WR= Rear Work & Reverse Lights
CR6= Cole Hersee #1048
J1= Rear Junction Box

panels/shank/zips/harness/rearsch



Accessory Brackets



Accessory Brackets

Ref #	Qty Req	Part #	Description
1	1	ZB111140	Gojak Bracket
Not Pictured	1	ZB-HK-080	Gojak Bracket Hardware Kit
2	1	ZB111170	Dolly Spindle Bracket
Not Pictured	1	ZB-HK-088	Dolly Spindle Bracket Hardware Kit
3	1	ZB110655	Dual Gas Can Holder
Not Pictured	1	ZB-HK-084	Dual Gas Can Holder Hardware Kit
4	1	IWSTRA1	Trash Can Holder
Not Pictured	1	ZB-HK-092	Trash Can Holder Hardware Kit
5	1	ITD-1179	Safety Cone Holder
Not Pictured	1	ZB-HK-091	Safety Cone Holder Hardware Kit
6	1	ZB110670	Tool Holder
Not Pictured	1	ZB-HK-087	Tool Holder Hardware Kit
7	1	ZB111160	Dolly Axle Holder
Not Pictured	1	ZB-HK-085	Dolly Axle Holder Hardware Kit