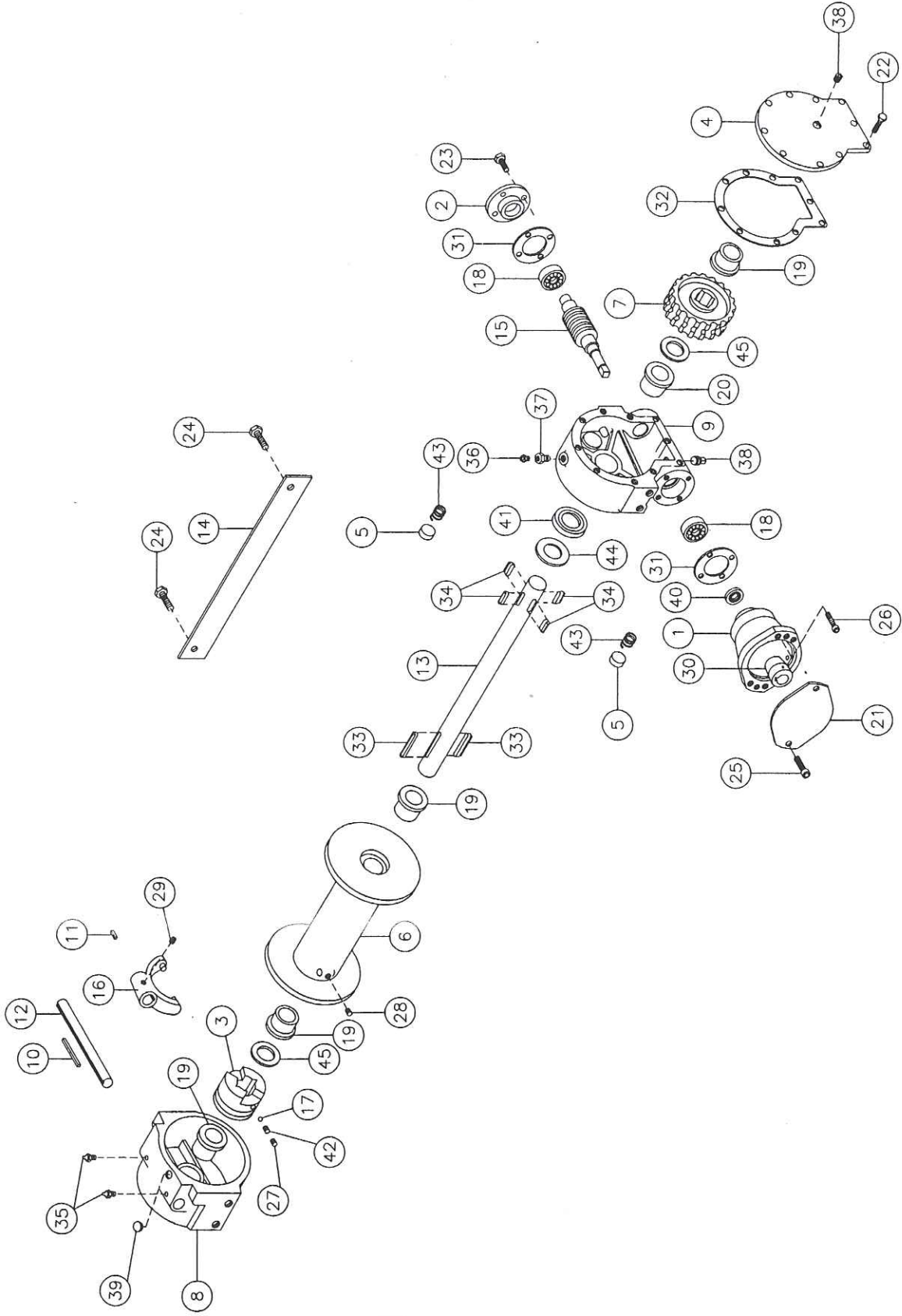


THIS PRINT IS PROVIDED ON A RESTRICTED BASIS AND IS NOT TO BE USED IN ANY MANNER DETRIMENTAL TO THE INTERESTS OF THE RAMSEY WINCH COMPANY.

REVISIONS					
SYM	DESCRIPTION	ECN	DATE	DR.	CHK.
F	REDRAWN W/O CHANGE	12037	3-31-99	CFH	RC
G	SEE SHEET 1.	13723	9-27-03	CAS	FP



CENTURY WRECKER

1 CH
 2 STD' NG 1

3 -20NCx3/4 LG. HX. HD. GR. 5
 -20NCx7/8 LG. HX. HD. GR. 5
 -16NCx3/4 LG. HX. HD. GR. 5
 -13NCx1 LG. HX. HD.
 -20NCx1-1/4 LG. SOC. HD. ND STRIP
 -5-18NCx1/4 LG. HX. SOC. HD. CUP PT.
 -16NCx1/2 LG. HX. SOC. HD. CUP PT.
 -20NCx1/2 LG. SQ. HD. CUP PT.

EF

3 3

ITEM#	QTY.	PART NUMBER	NOMENCLATURE	STOCK SIZE	MATERIAL	R.S.N.
LIST OF MATERIAL						
INCH TOLERANCE UNLESS OTHERWISE SPECIFIED		NAME	DATE	TITLE		
DECIMALS		CFH	3-29-99	MODEL H-246 SPEC.		
.06		RC	3-31-99	(LESS LEVER) FOR		
.001		FP	3-31-99	CENTURY WRECKER		
ANGULAR ±0° 30' DEGREES (SEE PARTS LIST)		NONE		REV.		

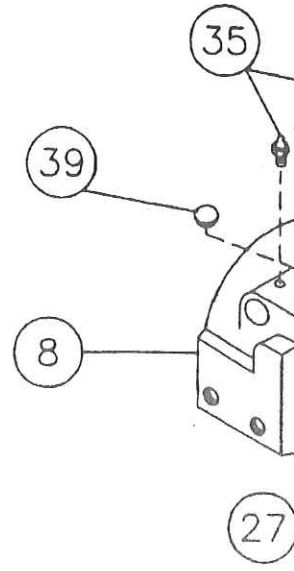
RAMSEY WINCH COMPANY
 TULSA, OKLAHOMA

121710

121710

PARTS LIST FOR H-246R LEVER SPECIAL FOR CENTURY WRECKER

ITEM NO.	QTY.	PART NO.	DESCRIPTION
1	1	300039	ADAPTER
2	1	316083	BEARING CAP
3	1	324161	JAW CLUTCH
4	1	328134	COVER
5	1	330010	SHOE-DRAG
6	1	332105	DRUM
7	1	334163	GEAR R. H. 46:1
8	1	338003	HOUSING-CLUTCH
9	1	338273	HOUSING-GEAR
10	1	342018	KEY
11	1	342024	KEY
12	1	356902	SHAFT-SHIFT
13	1	357479	SHAFT-DRUM-"STD"
14	1	364017	STRAP-SHIPPING
15	1	368017	WORM R. H. 46:1
16	1	370001	YOKE
17	1	400001	BALL-POPPET
18	2	402002	BEARING-BALL
19	4	412003	BUSHING
20	1	412045	BUSHING
21	1	413013	COVER-ADAPTER
22	10	414038	CAPSCREW 1/4-20NCx3/4 LG. HX. HD. GR. 5
23	4	414045	CAPSCREW 1/4-20NCx7/8 LG. HX. HD. GR. 5
24	2	414279	CAPSCREW 3/8-16NCx3/4 LG. HX. HD. GR. 5
25	2	414521	CAPSCREW 1/2-13NCx1 LG. HX. HD.
26	4	414835	CAPSCREW 1/4-20NCx1-1/4 LG. SOC. HD. ND STRIP
27	1	416040	SETSCREW 5/16-18NCx1/4 LG. HX. SOC. HD. CUP PT.
28	1	416059	SETSCREW 3/8-16NCx1/2 LG. HX. SOC. HD. CUP PT.
29	1	416084	SETSCREW 1/4-20NCx1/2 LG. SQ. HD. CUP PT.
30	1	431007	COUPLING
31	2	442184	GASKET
32	1	442205	GASKET
33	2	450006	KEY-BARTH
34	4	450016	KEY-BARTH
35	2	456006	FITTING-LUBE
36	1	456008	FITTING-RELIEF
37	1	468002	REDUCER
38	2	468011	PLUG-PIPE
39	1	472013	PLUG-PLASTIC
40	1	486009	OIL SEAL
41	1	486017	OIL SEAL
42	1	494001	SPRING
43	2	494002	SPRING
44	1	518014	THRUST WASHER
45	2	518015	THRUST WASHER



246040 SEAL & GASKET KIT

121710