

Automotive Yoke Puller

10850

**TIGER
TOOL**

Have What It Takes

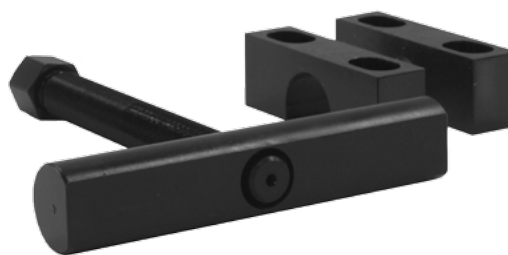
Safety Warning

Read all instructions and safety warnings prior to operation. Failure to do so could result in equipment damage, personal injury or even death.

- **Stay Alert!** Watch what you are doing and use common sense when operating this tool.
- Inspect product for damage prior to using; do not use if product is in unsafe condition.
- Do not operate tool while under the influence of drugs, alcohol or medication.
- Always use safety equipment to prevent injuries. Approved face and eye protection must always be worn by the operator, as well as others in the work area.
- Do not overreach. Keep proper footing and balance at all times.
- Dress properly. Do not wear loose clothing or jewelry. Keep your hair, clothing and gloves away from moving parts.
- Keep your work area clean and well lit.

Operating Instructions

- 1 Remove the large nut and washer retaining yoke to shaft.
- 2 Thread the forcing screw into the pull bar until the threads begin to show through on other side.
- 3 Holding pull bar assembly by the forcing screw, position the tool onto the yoke. Pull bar end reliefs should face yoke.
- 4 Attach adapter caps by four bolts.
- 5 Tighten down both caps.
- 6 Using up to a ½" impact wrench, begin applying power to the forcing screw.
- 7 Continue turning the forcing screw until the yoke is completely removed.



Here at Tiger Tool, your satisfaction is our number one priority. Should you have any questions about this or any of our products, please call us at 1.800.661.4661.



View demonstration videos and a complete product list at [tigertool.com](https://www.tigertool.com)

Technical Support
1.800.661.4661

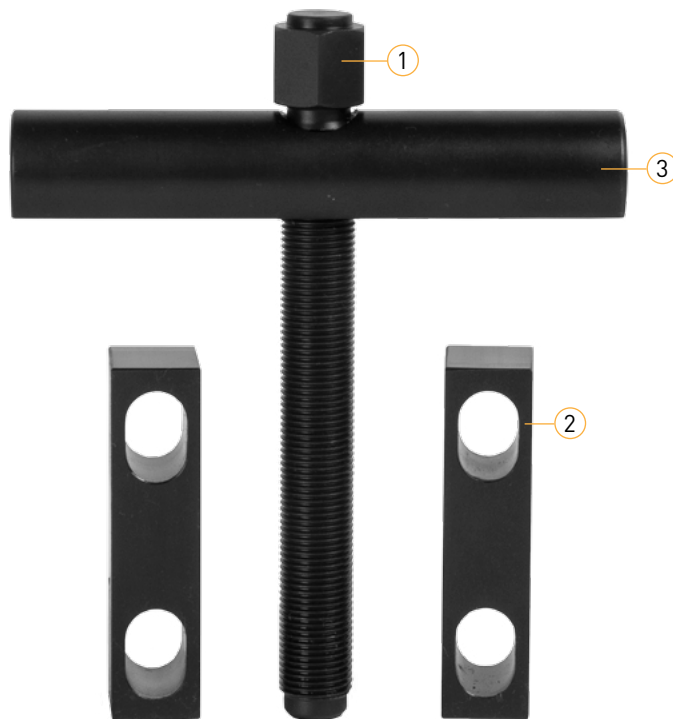
Automotive Yoke Puller

10850

**TIGER
TOOL**

Have What It Takes

Parts Breakdown



Item No.	Part Number	Description	Qty.
1	10850-1	Forcing Screw	1
2	10850-2	Cap	2
3	10850-3	Pull Bar	1



View demonstration videos and a complete product list at [tigertool.com](https://www.tigertool.com)

Technical Support
1.800.661.4661