

PROFESSIONAL LIGHT BARS

SIRENS, SPEAKERS & SWITCH CONTROLS

WHELEN[®]



Officially Licensed
Warning Lights
of NASCAR[®]

TABLE OF CONTENTS

INDEX

Legacy® Series Lightbars	3
Liberty™ Series Lightbars	4
Liberty Duo™ and Trio™ Series Lightbars	5
Justice® Series Lightbars	6
Delta™ Rota-Beam™ Series Lightbars	7
Freedom™ Series Lightbars	8
Freedom Rota-Beam Series Lightbars	9
Inner Edge® XLP Series Lightbars	10
Outer Edge Series Lightbars	11
Mini Lightbars	12
CanTrol™ WC	13
Siren Amplifiers	14-18
Howler™	19
Power Control Centers & Switches	20
Specifications	21-27



We are pleased to be the title sponsor of one of the great All-American sports, with the NASCAR® Whelen Modified Tour, the NASCAR Whelen Southern Modified Tour and now the recently added NASCAR Whelen All-American Series. This is our way of saluting not only the legends of NASCAR but also the dedicated professionals, Fire and EMS, Law Enforcement and Rescue Personnel that are every day heroes for us all. As the Officially Licensed Warning Lights of NASCAR®, we hope you'll enjoy our lights on pace cars and racetrack equipment at tracks around the country.

For motorsports news and racing schedules, visit www.whelen.com

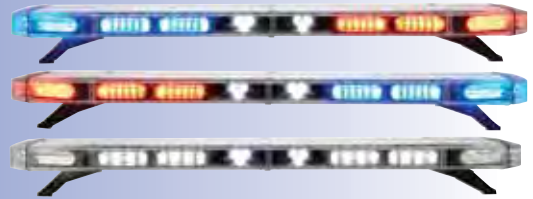


New Products to Look For!

Legacy Series Lightbars.....pg 3



Liberty TRIO Super-LED® Lightbars.....pg 5



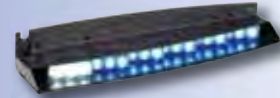
Delta Rota-Beam Series Lightbars.....pg 7



Freedom Rota-Beam Series Lightbars.....pg 9



Inner Edge XLP..... pg 10



Mini Freedom Rota-Beam pg 12



CanTrol WC pg 13



GenCom Sapphire™ pg 14



295SDA1 Siren Controllerpg 15



PCCS9RW.....pg 20



PCC6W1 and PCC10W1pg 20



LEGACY® **WE CAN®**

New!



NEW ultra low profile mounting foot.

NEW LEGACY SERIES ALL DUO+™ Super-LED® WeCan LIGHTBAR

Whelen's sharper EDGE®! Reminiscent of the classic Edge in a new style design, Legacy was designed from the rugged extrusion up to maximize the performance of the newest LED on the market.

- Lower profile than Liberty™, but with increased intensity puts the Legacy a step ahead of all other lightbars on the market today and tomorrow.
- **NEW** Diamond Optix™ (patent pending) linear reflector optic design.
- Newly designed, high-output one-piece linear combo "multi-angled" corner modules produce light forward and rear and at the critical 45° angles. The four combo modules produce 360° warning signal.
- All warning lighthoods are True DUO+, whether one color or two. Each segment can be operated independently or at the same time, creating the first true DUO lightbar, without loss of intensity. Ideal when you want to run a Traffic Advisor™ and rear warning at the same time, giving the performance of two lightbars in one.
- Whelen's exclusive Collimator™ patented design captures, collects and focuses light for unbeaten light output.
- Optional take-downs are available in 3-LED or 6-LED modules.
- Optional alley or DUO+ integrated alley and warning light module ensures no dead spots, no gaps... 360° of contiguous light.
- Only DUO+ lets you operate the alley and the warning lights at the same time, at full intensity.
- DUO+ technology and Advanced Thermal Design "ATD" provides attention demanding new flash patterns for more lighting on-time. These include "SteadyFlash" for use at nighttime traffic stop/accident scene for added protection for officers. ATD reduces the stress on the LEDs themselves when the dwell time of the LEDs is extended.
- One piece UNI-DOME construction with a single sealing point. Each dome slides onto the aluminum extrusion and wraps around all internal components while the wiper seal protects your lightbar from the worst elements.
- Center divider(s) with LIM (Liquid Injection Molded) wiper seals assure lightbar integrity in all conditions.



Complete light coverage with no dead spots between modules.



- Legacy "plug and play" into the CenCom Sapphire™ or CanTrol™ controller. A WeCan controller module is supplied for use with other switch centers from the lightbar.
- Hard-coated lenses shrug off environmental UV damage from the sun, salt and road chemicals.
- Photocell comes standard with Hi/Low that is adjustable for different ambient light levels. Meets SAE Class I requirements.
- Low-profile aerodynamic mounting feet maximizes fuel economy with virtually no wind noise.
- The I/O board snaps into brackets, and point to point wiring between each lighthood and the I/O board creates a clean look and allows for easy serviceability.
- Many patents pending.
- Standard lengths: 44" (110cm), 48" (123cm) and 54" (136cm).
- Height without mounting feet is only 1-5/8".



Bright illuminating take-down lights.



Multi-angled combo corner modules produce light straight out and to front and critical 45° angles.



DUO+ alley/warning module shown in White Alley mode and shown in Red warning mode in photo to the left.

For product options and specifications see page 21

The only Patented
Linear-LED® Module
On the Market Today



Liberty with optional LR11 take-downs, alleys and inboard Super-LED modules

Liberty™ Super-LED® Lightbars

Extreme low profile all Linear lightbar that is almost undetectable until lit. Brighter extended corner modules for more light at critical 45° and 90° angles.

- An all Linear-LED® lightbar.
- Heavy-duty, long-life operation with low current draw.
- Build your lightbar in any color combination with warning LED modules in any position you want.
- Choose the standard extended corner models (SA, SX, SW or SY), or the extra high intensity corner models (SB, SP, SR or SZ).
- Choose a four corner model, then add up to 12 Linear-LED directional modules in pairs, for a total of 16 modules, now or at any time in the future.
- Super-LED LR11 take-downs and alleys with 15° horizontal adjustment.
- Optional brake/tail/turn lights.
- Optional Traffic Advisor™ available in single color or DUO™ Linear-LED modules for combination Traffic Advisor and warning capability in a single lighthouse.
- Optional solar panel compensates for parasitic draw from the vehicle's computer, improves battery efficiency and extends battery life.
- Photocell option for Hi/Low power.
- Extruded aluminum chassis provides superb strength and stability.
- All LED modules feature wide-angle design for increased performance.
- Clear outer lenses are standard, optional color lenses are available.
- Five year HDP® Heavy-Duty Professional warranty on LEDs.
- All models exceed SAE requirements.
- Size: 2-1/2" (64mm) H x 12" (304mm) W x 43-1/8" (109cm), 48-1/2" (123cm) or 53-7/8" (137cm) L.
- **To help you build your lightbar, Whelen WeCad™ build-a-bar program is available on our website at www.whelen.com.**

SX, SP, SZ & SY SERIES LOW CURRENT SWITCHING WITH **SCANLOCK**

- Each Super-LED lighthouse is driven by a single all electronic module that provides proper input power and choice of flash patterns.
- Scan-Lock™ allows you to easily scan through multiple flash patterns and lock in the desired pattern. Every pair of lights can have its own unique pattern.
- Low current "LC" operation uses a small diameter external cable harness for operation with standard, low current switch controls or micro switches.
- SZ Series allow for optional DUO Super-LED inboard, corner or all modules to both the front and/or rear of the lightbar. Each module contains two sets of different color LEDs, allowing for true dual color modules without giving up light intensity.
- Optional Traffic Advisor with ultra high intensity Linear Super-LED modules, split or DUO Traffic Advisors are available.
- Pre-wired with 15' passenger side cable exit, optional driver side cable exit.

SA, SB, SW, SR SERIES **WE CAN** PROGRAMMABLE WITH

WeCan Programmable Series includes an external interface unit, the WeCan® electronic control module (ECM), which communicates all lightbar operating functions via a 2-conductor, 20-gauge cable. All functions are programmed by a PC via simple "pick & click, or drag" screens. Windows® based XP or later operating system required. USB input to the ECM from PC or laptop makes programming easy.

- Small cable allows for easier overall wiring and lightbar installation.
- Up to 18 different programmed warning configurations can be operated via customer supplied switching to each of the 18 input wires to the ECM (default program pre-installed). Once the ECM is programmed, selection of these wires will allow for:
 - Complete independent "On" or "Off" control of each lighthouse.
 - Flash pattern control of each lighthouse.
 - Phase control of each lighthouse with four phases that allow for alternating, simultaneous & combo flash patterns.
 - DUO lighthouses offer independent control of each color in each lighthouse, including On/Off and phasing.
 - Cruise light control with almost unlimited adjustable intensity levels.
 - Independent Hi/Low control is available to any one or more Super-LED lighthouses, excluding the four corner modules (required for SAE certification).
 - Independent sequential (single wire or 2-wire) control of the traffic arrow functions (left, right, split) does not require a Traffic Advisor control head.
- The WCC9 (substituted for the ECM) has 10 pre-programmed lightbar configurations accessible via dip switches located on the rear of the unit.

Series	WeCan	Low Current	Corner Module	Single Color	DUO Corners	DUO Inboards	DUO TA
SA	Yes	-	Standard	Yes	-	Yes	Yes
SB			Extra high intensity		Yes		
SR			Standard		-		
SW	-	Yes	Standard	Yes	Yes	Yes	-
SY			Extra high intensity		-		
SZ			Standard		-		
SP							
SX							



Extended corner modules.



Optional solar panel compensates for parasitic draw.



Optional WCC9 WeCan electronic control head.



Optional LR11 Super-LED flashing take-down light.



Optional LR11 Super-LED flashing alley light.



Optional super high intensity Super-LED take-down light.

For product options and specifications see page 21

Liberty™ DUO™ Super-LED® Lightbars

With DUO Technology, it's like having multiple lightbars in one!

- DUO models have the ability to flash different colors in the same lightbar giving you up to four lightbars in one!
- Combination lighting with two warning colors in a single Super-LED module for just about any color combination you need.
- Optional Duo Super-LED Traffic Advisor™ lets you change your primary color warning lights to Amber Traffic Advisor mode.
- Available in both WeCan® and low current lightbars.
- **To help you build your lightbar, Whelen WeCad™ build-a-bar program is available on our website at www.whelen.com.**

DUO

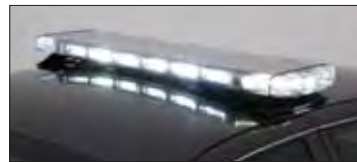
Now Available in WeCan®



Duo Technology shown in Amber Traffic Advisor mode and in Red/Blue warning mode



Duo Technology has different color LEDs in the same module allowing one lightbar to flash different colors and different flash patterns all in the same lightbar without giving up light intensity!



With Duo Technology you can change your Red/Blue warning lightbar to a flood work light with a flip of a switch!

TRIO™

NEW Liberty TRIO™ Super-LED Lightbars



Whelen's top performing Liberty lightbar just took another huge step forward with its TRIO technology, available in four pre-configured combinations of Linear-LED® modules.

Warn the public, display your position, illuminate crucial work areas and secure the flow of traffic. This is the pinnacle of command vehicle lighting!

- Combination Tri-Color warning in a single Super-LED lighthouse. Change it to fit your needs by flipping a switch!
- Change color sets to the front, rear and sides of the lightbar with the lighting combination you need.
- Select high intensity Red and Blue warning light with White illumination light when you need it. Or add an Amber Traffic Advisor to the rear for additional rear warning while keeping the White illumination lights available. For command posts, we offer these bars with steady Green corners.
- WeCan technology allows for all 18 wires on the control point to be easily programmed using a Windows® based software. This allows for individual control of each warning, take-down and alley lighthouse. The steady feature offers pre-configured group light control.
- Standard with LR11 Super-LED alley lights and take-down lights, with optional Dual LR11 take-downs or extra high intensity take-downs for even more powerful illumination.
- Available in pre-programmed WeCan Series lightbars.
- All models exceed SAE requirements.
- **To help you build your lightbar, Whelen WeCad build-a-bar program is available on our website at www.whelen.com.**

Package S3#1 Warning / Illumination



Package S3#3 Warning / Illumination Command



Package S3#2 Warning / Illumination & Traffic Control



Package S3#4 Warning / Illumination & Traffic Control Command



For product options and specifications see page 22

WHELEN® LIGHTBARS



Justice with optional LR11 take-downs, alleys and inboard CON3 modules



JY8RRBB with optional CON3 Traffic Advisor



JALF1 Two LR11 flashing alley lights

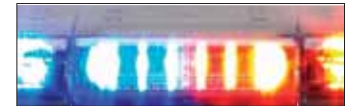
Justice® Super-LED® Series Lightbars

High performance, cost competitive Super-LED lightbar with a wide range of options, designed for ease of operation, upgrade and serviceability. Available in WeCan® and Competitor™ Series.

- Black polycarbonate base on an extruded aluminum platform for added strength.
- Clear outer lens standard with a moisture resistant compression fit gasket. Optional color lenses available.
- Optional CON3™ or LIN6™ lighthouse modules for outer sections.
- Center section available with optional single CON3, LIN6 or two LTR3™ lighthoods (for split color center section).
- Corner modules available with 6 or 9 Super-LED linear modules.
- Optional external high intensity flashing LED alley light pod and internal LR11 warning light in alley position.
- Standard passenger side cable exit, driver side optional.
- Service oriented. Change colors, upgrade or service lightbar in the field with ease, simply remove six screws for outer dome or four screws for center dome to access any section of the lightbar.
- Replace any lighthouse by removing one screw and single connector.
- Wrecker Lightbar, standard 62" Competitor™ Series model with rear work lights and brake/tail/turn lights.
- Five year HDP® Heavy-Duty Professional warranty on LEDs.
- Size: 2-1/4" (57mm) H x 12" (304mm) W x 44" (112cm) or 50" (127cm) or 56" (142cm) L.
- **To help you build your lightbar, Whelen WeCad™ build-a-bar program is available on our website at www.whelen.com.**



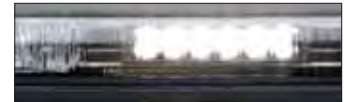
Standard CON3 light modules with removable optic spreading filters.



Optional LIN6 modules.



Optional external high intensity flashing LED alley light pod and LR11 warning light in alley position, shown.



Optional high intensity LED flashing take-downs or work lights.



Optional LTR3 modules for center section.



Optional LR11 Super-LED flashing alley light.



Optional LR11 Super-LED flashing take-down.



Optional WCC9 WeCan electronic control head.

JC/JE SERIES, STANDARD CURRENT SWITCHING WITH **SCANLOCK**

JC Series 9 Super-LEDs per corner module
JE Series 6 Super-LEDs per corner module

- Front, rear and all bar operation control, Scan-Lock™ flash pattern control and pattern override feature.
- Optional LIN6, CON3 or LTR3 inboard modules, LR11 alley lights, LR11 take-downs, both with 15° horizontal adjustment or flashing take-downs.
- Optional Traffic Advisor™ with control head.

Series	WeCan	Standard Current	Corner Module	DUO TA
JC	-	Yes	9 LED	-
JE	-		6 LED	
JV	Yes	-	9 LED	Yes
JY			6 LED	

JV/JY SERIES PROGRAMMABLE WITH **WECAN**

JV Series 9 Super-LEDs per corner module
JY Series 6 Super-LEDs per corner module

- WeCan Electronic Control Module (ECM) communicates all lightbar operating functions via a 2C, 20-gauge cable.
- Easily programmed by your computer via simple "pick & click, or drag" screens.
- Windows® based XP or later operating system required.
- USB input to the ECM from PC or laptop makes programming easy.
- Built-in Traffic Advisor control, independent flash pattern and phase control of each individual lighthouse, standard.
- Optional LIN6, CON3 or LTR3 inboard modules, LR11 Super-LED flashing take-downs and alley lights with 15° horizontal adjustment.
- Optional WCC9 WeCan electronic control head replaces the standard WeCan control module. Hand held or mounted to the dash or console, the WCC9 controls warning lights, take-downs, alley lights and Traffic Advisor from a single key pad.
- **NEW** Optional LIN6 DUO™ Traffic Advisor lets you change your primary color warning lights to Amber Traffic Advisor mode.

For product options and specifications see page 23



DS8RRBB shown with optional DSRBRB, DSRBRR and DSRBB



NEW DELTA™ Rota-Beam™ SERIES Super-LED® “ROTATING” LIGHTBAR

100% Solid-State! No moving parts and no motors. Your eyes will tell you that it is a rotating lightbar, but it is simply the latest innovation in LED lighting from Whelen! If you are looking for the longer dwell time and sweep of halogen rotating lights, here it is... and only the motor noise is missing!

- Sleek, multi-level warning lightbar featuring new Super-LED “rotating” light modules, using the latest generation of LED technology.
- Two to six Rota-Beam Super-LED, 100% Solid-State “rotating” beacons plus optional angled mirrors.
- No moving parts. No motors to wear out or malfunction.
- Multiple Scan-Lock™ flash patterns; some with varying flash rates for an almost unlimited choice of internally controlled warning patterns for the Rota-Beams.
- SAE Class 1 Certified.
- Multi-level for 360° of unobstructed warning.
- External photocell for low power, optional.
- Optional lower level; single or dual LR11 take-down lights.
- Optional lower level; single or dual LR11 alley lights.
- Optional lower level; Linear6™ Super-LED wide-angle warning modules. Front/rear control with up to 4 in the front and 4 in the rear.
- Cruise light mode standard on outboard Rota-Beam (adjustable).
- Clear polycarbonate outer domes are hard coated for scratch and fade resistance. Insuring your lightbar will look new for many years.
- Low current draw, moisture and vibration resistant.
- Height from base to dome is approximately 5-1/2 inches.
- Rugged extruded aluminum base will not sag or warp.
- Six-point polycarbonate mounting feet provide a stable stance on the thinner roofs of today's vehicles.

- Optional mounting kits available.
- 20' cable standard.
- Easy to install, maintain and operate with amazing warning performance.
- Available in Red, Blue, Amber and White. Split (front/rear) colors available.
- Standard current switching allows this lightbar to be easily wired to Whelen's 295SLSA6, PCCS9RW, PCCW Series or other standard current switching.
- Five year HDP® Heavy-Duty Professional warranty.
- Dimensions: 5-1/2" (140mm) H x 16-3/4" (425mm) D x 50" (126cm) or 56" (185cm) L.





Ultra Freedom with optional dual LR11 take-downs and inboard Super-LED modules

**The only Patented
Linear-LED® Module
On the Market Today**



Ultra Freedom with optional Linear Super-LED Traffic Advisor™

Freedom™ Super-LED® Lightbars

- All models meet or exceed SAE Class 1 and California Title XIII requirements.
- Modular construction lets you build your lightbar in any color combination with take-downs and Super-LED modules in any position you want.
- Optional Solar Panel compensates for parasitic draw from the vehicle's computer, improves battery efficiency and extends battery life.
- Clear outer lenses are standard, with optional individual color lenses.
- Five year HDP® Heavy-Duty Professional warranty on LEDs.
- Standard lengths: 44", 50", 55".
- See current Price List or Website for complete list of options.
- Size: 3-3/4" (95mm) H x 12" (304mm) W x 44-3/8" (113cm), 49-3/4" (126cm) or 55-1/8" (140cm) L.
- **To help you build your lightbar, Whelen WeCad™ build-a-bar program is available on our website at www.whelen.com.**

FL/FX SERIES LOW CURRENT SWITCHING WITH *SCAN*LOCK

FL Series has standard corner modules
FX Series has extended corner modules

- Choose the 4 corner linear module lightbar, then add up to twelve Linear Super-LED modules for a total of sixteen modules.
- Optional five or six ultra high intensity Linear Super-LED Traffic Advisor™.
- Each Super-LED lighthouse is driven by an all electronic module that provides proper input power and choice of flash patterns.
- Scan-Lock™ allows you to scan through multiple flash patterns and lock in the desired pattern. Every pair of lights can have its own unique pattern.
- Optional single or dual LR11 Super-LED flashing take-downs and flashing alley lights with 15° horizontal adjustment.

Series	WeCan	Low Current	Corner Module	Bi-level Control of Lighthoods
FL	-	Yes	Standard	-
FX			Extended	
FV	Yes	-	Standard	
FW			Extended	
FC				Yes



Optional WCC9 WeCan electronic control head.



Optional single LR11 Super-LED flashing take-down with 15° horizontal adjustment.



Optional dual LR11 Super-LED flashing take-down with 15° horizontal adjustment.



Optional solar panel compensates for parasitic draw.



Optional dual LR11 Super-LED flashing alleys with 15° horizontal adjustment.



Freedom FL with FLALY 400 Series alley light option.

FV/FW SERIES PROGRAMMABLE WITH *WE*CAN

FV Series has standard corner modules
FW Series has extended corner modules

WeCan Programmable Lightbar Series. "FV & FW" are similar to the "FL & FX" Series except includes an external interface unit, the WeCan electronic control module (ECM), which communicates all lightbar operating functions via a 2-conductor, 20-gauge cable. All functions are programmed with a PC via simple "pick & click, or drag" screens. Windows® based 2000, XP or later operating system required. USB input to the ECM from PC or laptop makes programming easy.

- Choose the "FV" standard 4 corner Linear Super-LED with 400 Series or single or dual LR11 alley light options or "FW" extended corner module with single or dual LR11 alley light option.
- Small cable allows for easier overall wiring and lightbar installation.
- Up to 18 different programmable warning configurations can be operated via customer supplied switching to each of the 18 input wires to the ECM (default program pre-installed). Once the ECM is programmed, selection of these wires will allow for:
 - Complete independent "On" or "Off" control of each lighthouse.
 - Flash pattern control of each lighthouse.
 - Phase control of each lighthouse, with four phases that allow for alternating, simultaneous & combo flash patterns.
 - Cruise light control with almost unlimited adjustable intensity levels.
 - Independent Hi/Low control is available to any one or more Super-LED lighthoods, excluding the four corner modules (required for SAE certification).
 - Independent sequential (single wire or 2-wire) control of the traffic arrow functions (left, right, split) does not require a Traffic Advisor control head.
- The WCC9 (substituted for the ECM) has 10 pre-programmed lightbar configurations accessible via dip switches located on the rear of the unit.
- WeCan Electronic Control Module can be deleted when a WeCan lightbar is being used with a Whelen CenCom Sapphire™ or CanTrol™ siren/light control system.

Freedom II Series



Freedom II with optional dual LR11 take-downs and inboard Super-LED modules.

FC SERIES PROGRAMMABLE WITH *WE*CAN

- The Freedom II "FC" Series has all the great features of the "FW" lightbars with the extended corner modules plus independent control of upper and lower levels of each split or solid color lighthouse.
- Whether you choose solid color or split color modules, you have independent control of each module, upper and lower level, for virtually two lightbars in one.



**NEW FREEDOM™ Rota-Beam SERIES
SUPER-LED® “ROTATING” LIGHTBAR**

With the classic, aerodynamic appearance of the Edge® 9000 Series, Freedom is one and three quarters inches shorter than the Delta Rota-Beam™ lightbar and features modular construction. 100% Solid-state! No moving parts and no motors. Your eyes will tell you that it is a rotating lightbar, but it is simply the latest innovation in LED lighting from Whelen! If you are looking for the longer dwell time and sweep of halogen rotating lights, here it is... and only the motor noise is missing!



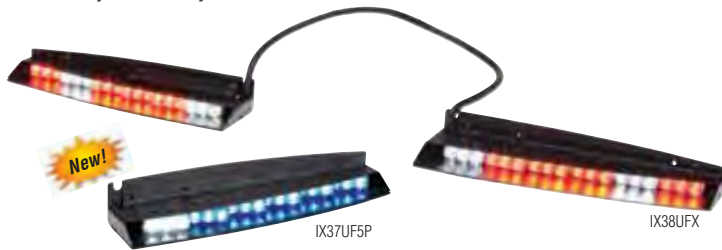
- Sleek, new Super-LED “rotating” light modules, using the latest generation of LED technology.
- Start with four half 180° modules and add up to six more half 180° modules.
- No moving parts. No motors to wear out or malfunction.
- Multiple Scan-Lock™ flash patterns; some with varying flash rates for an almost unlimited choice of internally controlled warning patterns for the Rota-Beams.
- SAE Class 1 Certified.
- 360° of unobstructed warning.
- External photocell for low power, optional.
- Single or dual LR11 take-down lights.
- Optional Linear Super-LED wide-angle warning modules. Front/rear control with up to 4 in the front and 4 in the rear.
- Clear polycarbonate outer lenses are hard coated for scratch and fade resistance. Insuring your lightbar will look new for many years.
- Low current draw, moisture and vibration resistant.

- Height from base to dome is approximately 5-1/2 inches.
- Rugged extruded aluminum “I” Beam will not sag or warp.
- Six-point polycarbonate mounting feet provide a stable stance on the thinner roofs of today’s vehicles.
- Optional mounting kits available.
- 20’ cable standard.
- Easy to install, maintain and operate with amazing warning performance.
- Available in Red, Blue, Amber and White.
- Standard current switching allows this lightbar to be easily wired to Whelen’s 295SLSA6, PCCS9RW, PCCW Series or other standard current switching.
- Five year HDP® Heavy-Duty Professional warranty.
- Dimensions: 3-3/4” (95mm) H x 12” (304mm) W x 44-3/8” (113cm), 49-3/4” (126cm), 55-1/8” (140cm), 60” (152cm) or 72” (183cm) L.

Inner Edge® & Inner Edge XLP Super-LED® Lightbars

Full featured interior vehicle specific lightbar series is virtually undetectable when not in operation, allowing you to be seen only when you want to be seen! Now offered in the extra low profile XLP Series!

- Choose the housing to fit your vehicle and light modules you need.
- Rugged housing fits snugly against the vehicle's upper front windshield, or lower back window.
- Choose from 3-LED, 6-LED or 6-LED DUO™ Super-LED modules.
- DUO technology models have different color LEDs in the same module allowing lightbar to flash different colors.
- Super-LED take-down lights, available on front 3-LED units.
- Easy installation. Front facing models mount to visor anchor points. Rear lower facing uses the existing child-restraint brackets, both without drilling holes.
- Requires customer supplied switches or control head, purchased separately.
- Available in Red, Blue, Amber and White.
- Scan-Lock™ provides multiple flash patterns.
- Order by choosing housing and then add the LED color modules required.
- Five year warranty on LEDs.



NEW EXTRA LOW PROFILE FORWARD FACING 3-LED SERIES

- XLP (Extra Low Profile), 3-LED models with low current switching, removable lens for spot pattern and low power. XLP housing is shorter and thinner, mounting closer to headliner and windshield for more interior room.
- Meets SAE and California Title XIII specifications.
- Low profile two piece housings with 3-LED Series lighthoods.
- Split two piece housings for individual driver and passenger side units.
- Choose from four configurations with five, six, ten or twelve lighthoods (see chart on page 25 for models and configurations).
- Fits late model Ford Explorer, Police Interceptor Utility, F150/250/F350, Fusion, Taurus and Police Interceptor Sedan; Chevy Caprice, Suburban, Tahoe, Silverado; Dodge Charger and Ram police vehicles.



Patented see through mirrored shroud on driver side reduces flashback and makes it easy to view traffic lights and overhead signs.



One piece unit shown secured up against windshield.



SCANLOCK

NEW EXTRA LOW PROFILE 6-LED WECAN® DUO SUPER-LED SERIES

- 6-LED DUO Super-LED lighthoods, featuring two colors in one LED module.
- Independent control of each warning color, White feature is in groups of three.
- Available in Red/White, Blue/White and/or Amber/White are available with White being the default take-down lights.
- Only 3/4" in height, with 40 Scan-Lock flash patterns.
- Sturdy powder-coated aluminum housing and low power option.
- Choose from four configurations with six or twelve lighthoods (see chart on page 25).



REAR FACING LOWER DECK SERIES 6-LED LINEAR-LED MODELS

- These models mount on the rear deck snugly against the rear window, eliminating any flashback to the driver.
- Low profile black textured housing mounts using existing child-restraint brackets.
- Available with Linear6™ or LINZ6™ modules.
- Choose from six configurations with six, eight or ten lighthoods for warning or Traffic Advisor™ models (see chart on page 25).



Rear facing warning mounted on lower rear deck.

For more information please request Inner Edge brochure.



For model numbers and vehicle specifications see chart on page 25

Outer Edge® Lightbars

Vehicle specific Super-LED horizontal and Pillar mount warning for 2010-2013 Chevy Suburban/Tahoe models. Two independent housings with four lightheades per section that are custom designed to mount on the outside of the vehicle. Whether the rear hatch of your vehicle is open or closed, Whelen offers lighting protection specific to the back of that vehicle. Horizontal and vertical models are made for the rough treatment, weather and chemical exposure that's part of your job environment.

VEHICLE SPECIFIC SUPER-LED® EXTERNALLY MOUNTED WARNING BASIC FEATURES

- Fits 2010 – 2013 Chevy Suburban/Tahoe vehicles.
- Clear, non-fluted lenses are sealed to the ABS vacuum-formed housings.
- Housings mount to body and back window with 3M® VHB tape, included.
- Lightheades are fully encapsulated for superb moisture and vibration resistance.
- Scan-Lock™ lets you scan through multiple flash patterns and select the desired pattern.
- Available in Amber, Blue, Red and White.

OE13UR8 HORIZONTAL MOUNT MODELS

- Eight LINZ6™ lighthead modules are located on the upper portion of the vehicle's rear window.
- Eight lamp Traffic Advisor™, or 8 total with six lamp Traffic Advisor and two end flashing lamps.
- Warning offers 7 flash patterns.
- Traffic Advisors offer four Scan-Lock patterns.
- Requires customer supplied switches or optional Whelen TADCTL1 Traffic Advisor Control Head.

RP13** VERTICAL PILLAR MOUNT MODELS

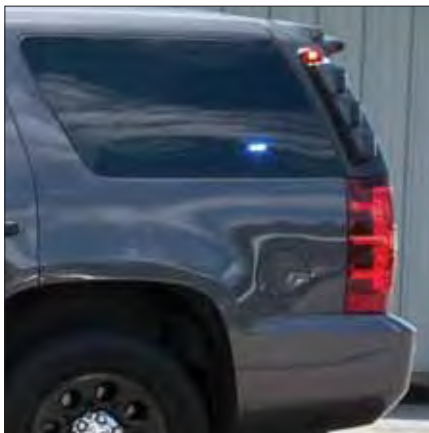
- Six LINZ6 lightheades and two Vertex lightheades.
- Mounts above the brake/tail/turn assembly rear pillar.
- Requires customer supplied switches.
- 25 flash patterns available.



Pillar mount



Horizontal mount



For product options and specifications see page 26

Professional Super-LED® Mini Lightbars

Useful for vehicles where space is at a premium or where, due to the size of the vehicle, the use of two low current mini lightbars offers a strategic benefit over the use of a single lightbar.

RESPONDER® HD MINI LIGHTBARS

- Heavy-duty Class 1, J845 Certified.
- Super-LED dual level modules with multiple Scan-Lock™ flash patterns.
- Rugged aluminum base available in permanent, magnetic and magnetic/suction mount.
- ActionScan™ default flash pattern in magnetic and magnetic/suction mount models.
- Five year warranty on LEDs.
- Size: 5-1/8" (130mm) H x 6-5/16" (160mm) W x 17-1/4" (438mm) L.



R10HD, dual level Super-LED, magnetic/suction mount

RESPONDER LP LOW PROFILE MINI LIGHTBARS

- Low-profile, mini lightbar with choice of LIN6™, CON3™ and DUO™ Super-LED modules.
- DUO technology models have different color LEDs in the same module allowing lightbar to flash different colors.
- Provides 360° of high impact warning coverage.
- Built-in flasher to provide multiple Scan-Lock patterns including steady-burn.
- Rugged aluminum or polycarbonate base, with a polycarbonate self-cleaning dome.
- Available in permanent, magnetic and magnetic/suction mount.
- Permanent mount includes 6" pigtail. Magnetic and magnetic/suction mount versions include 10' straight cord and cigar plug with LED indicator On/Off switch and pattern control switch.
- Size, Aluminum base: 3-1/4" (83mm) H x 6-5/16" (160mm) W x 17-3/8" (44cm) L.
Polycarbonate base: 2-7/8" (74mm) H x 6-5/16" (160mm) W x 17" (43cm) L.



DUO technology LIN6 with polycarbonate base

LIN6 with aluminum base

CON3 with polycarbonate base

MINI LIBERTY™ LIGHTBAR

- All Linear-LED® in a sleek 2-1/2" high aerodynamic profile.
- Heavy-duty, long-life operation.
- Available in permanent, magnetic and magnetic/suction mount.
- Permanent mount available with optional take-down or two alley lights.
- Clear outer slide-in lenses and snap-in/lock-in lamp modules.
- Size: 2-1/2" (64mm) H x 12" (304mm) W x 22" (558mm) L.



Mini Liberty with magnetic mount

MINI ULTRA FREEDOM™ LIGHTBARS

- Heavy-duty rugged extruded aluminum I-beam chassis, easy access to internal components.
- Multiple Scan-Lock flash patterns.
- Size: 3-3/4" (95mm) H x 12" (304mm) W x 28-1/4" (717mm) L.

LINEAR-LED VERSION

- Optional two or four Super-LED flashing modules.
- Four high-intensity Linear-LED modules.
- Optional take-downs and alley lights for permanent mount models.

NEW ROTA-BEAM™ ROTATING VERSION

- New "rotating" modules. No moving parts, 100% solid state.
- Four half 180° modules and add up to two more half 180° modules.



Mini Freedom Rota-Beam with optional module



Mini Ultra Freedom with optional Super-LED flashing modules

MINI JUSTICE® LIGHTBAR

- Optional LR11 Super-LED take-downs and alley lights for permanent mount models.
- Add up to 4 optional CON3™ warning modules.
- Combine small modules like a LTR3™ warning with a LR11 take-down in one module.
- Black polycarbonate base on an extruded aluminum platform for added strength.
- Clear outer lens with a moisture resistant compression fit gasket. Optional color lenses available.
- Size: 2-1/4" (57mm) H x 12" (304mm) W x 23" (584mm) L.



Mini Justice with optional CON3 modules

For product specifications see page 26

The use of a magnetic or magnetic/suction mount lightbar on the roof of a vehicle in motion is not recommended, and is at the sole discretion and risk of the user.

WHELEN® SIREN AMPLIFIERS

NEW CanTrol™ WC

Create dynamic unified warning by incorporating every light and siren on your cruiser into custom program configurations. Officers can keep both hands on the wheel instead of trying to figure out which button to push!

Sold through Authorized CanTrol Distributors Only.



CANWC1



CANCTL1



CANCTL2



CANCTL3



CANCTL4



CANCTL5



CANEM16



CAN TROL™ WC

With CanTrol WC, your warning system becomes your strongest ally for safety. Pre-configure the proper response to any situation before it happens... before timing is critical, before an emergency or accident requires instantaneous judgment. Vehicle integration lets you program and control all the lighting, traffic arrows and siren functions in your vehicle, flash pattern synchronization, canine alarm and temperature monitor control, radar and camera activation, door or trunk opening, window down, gun lock, ignition disable and much more. The abilities of CanTrol WC are limited only by your imagination...

Configuration is easy with a Windows® based computer program. A USB port allows easy program transfer from your computer to the amplifier/control module.

FEATURES

- Full function amplifier/control module.
- Program and control all the lighting, traffic arrows and siren functions in your vehicle.
- All outputs have both short circuit and over-current protection.
- WeCan® lightbar plugs directly into the amplifier/control module and is programmed by the CanTrol software.
- Choice of five styles of control heads (ordered separately).
- Three analog inputs for temperature sensor, ambient lighting, etc.
- Integrated battery voltage monitor for power met.
- Supports one or two 100 watt speakers.
- Programmable for Hands-Free operation.
- 161 synchronizable, variable-phase, programmable flash patterns.
- Includes PA and radio repeat functions.

- System supports up to two modules, allowing for 16 additional 2-1/2 amp outputs per module (total of 32 additional outputs).
- Delayed shut-down allows system to operate for up to four hours after vehicle is turned off.
- Redesigned housing with integrated diagnostic LEDs for quick troubleshooting.
- Newly designed software makes it easy to configure using Windows application program.
- Pre-configured programs may be modified and stored for ease of service. Easily extract your custom program and transfer to other vehicles.
- USB port in the amplifier/control module allows easy access for programming.
- Power and input/output cabling with connectors, standard.
- Each output has diagnostic indicator on the top.
- Eight inputs for customer supplied external switches; four for use on positive or ground switching, and four for use on positive switching only.
- Thirty-two 2-1/2 amp outputs.
- Three low current 1/4 amp outputs.
- Eight programmable 10 amp outputs.
- Three Diagnostix™ system indicators.
- Traffic Advisor™ module allows for easy connection to traffic arrows that utilize a 9C cable, eliminating the need of a traffic arrow controller.
- WeCan lightbar Traffic Advisor can be synchronized with remote Traffic Advisors that utilize a 9C cable.
- Meets or exceeds all applicable SAE, California Title XIII and NFPA requirements with various Whelen speakers, control heads and lighthead.
- 49 programmable siren tones (Listed below).
- Five year HDP® Heavy-Duty Professional warranty.

MODELS

CANWC1 Includes standard amplifier/control module with sixteen, 2-1/2 amp outputs, three low current 1/4 amp outputs and control head of choice. Traffic Advisor module, eight total programmable outputs (four 10 amp pos/neg and four 10 amp pos only), an additional thirty-two 2-1/2 amp outputs, three communication Diagnostix indicators with optional CANEM16. Size: 3-1/8" (79mm) H x 7" (194mm) D x 9-1/2" (241mm) L.

CONTROL HEADS

- CANCTL1** Includes 3-position slide switch, eighteen push-buttons, microphone and extension cable. Size: 3-1/2" (89mm) H x 1-5/16" D x 6-7/8" (174mm) L.
- CANCTL2** Includes 3-position progressive light/siren control, eighteen push-buttons, microphone and microphone extension cable. Size: same as CANCTL1.
- CANCTL3** Includes a single master emergency switch, eighteen push-button light/siren controller, microphone and microphone extension cable. Size: same as CANCTL1.
- CANCTL4** Includes 3-position slide switch, six push-buttons, microphone and microphone extension cable. Size: 2-1/2" (64mm) H x 7/8" (22mm) D x 4-3/16" (106mm) L.
- CANCTL5** Includes a hand held combination microphone and controller, 3-position progressive light/siren control, nine push-buttons and microphone extension cable. Size: 5-5/16" (135mm) H x 2-3/16" (56mm) W x 1-1/8" (29mm) D.

OPTIONS

- CANEM16** 16 output expansion module, up to 2 per system.
- CANLITEB** Light sensor in Black housing.
- CANLITEC** Light sensor in Chrome housing.
- CANTEMPB** Temperature sensor in Black housing.
- CANTEMPC** Temperature sensor in Chrome housing.

SIREN TONES

- 392 AVF
- 800 HZ
- Airhorn
- Airhorn Hi/Low
- Alarm
- Alternate Wail
- Alternate Yelp
- Composite Hi/Low 1800 1400 List
- Composite Hi/Low 2800 2000 List
- Composite Piercer
- Composite Wail
- Composite Tritone
- DIN Hi/Low
- FRA AF • Hi/Low
- Hi/Low 466p
- Hi/Low 500-660
- Hi/Low 510-1150
- Hi/Low 610-760
- Hi/Low GEN
- Hi/Low POL
- Hi/Low SPO
- Hi/Low UMH
- K9 Alarm
- Manual Coast
- Manual Stop
- Martin Hi/Low
- Mechanical Manual Coast
- Mechanical Manual Stop
- Mechanical Wail
- No Tone
- PA
- Piercer
- Pulsed Airhorn
- Pulsed Piercer
- Radio
- Tritone
- Wail
- Wail 378p3
- Wail 850-1700 4s
- Wail 850-1700 5.25s
- Wail Yelp
- Wail Yelp Piercer
- Warble
- Warning
- Warning Chirp
- Woop
- Yelp
- Yelp 225
- Yelp 249

WHELEN® SIREN AMPLIFIERS

NEW CenCom Sapphire™



REMOTE SIREN AND CONTROL CENTER

CenCom Sapphire features an integrated WeCan® serial port for connecting your Whelen WeCan series lightbar directly to the Amplifier Control Module. No more bulky wires and secondary boxes to contend with, just plug-in and go!

CenCom Sapphire indicator LEDs on each output create a simple way to troubleshoot shorted or broken connections in your vehicle's wiring.

Fuses and connections are easily accessible without having to use any tools or remove any covers. All high current outputs are fused for your convenience.

New, heavy-duty power and output connectors can handle rough treatment without damage or accidental disengagement and are easily accessible on the front face of the Amplifier Control Module.

Configuration programming is easier than ever with newly redesigned CenCom Sapphire software. CenCom Sapphire retains the highly regarded simplicity of our previous CenCom software, with new features and added flexibility, including the ability to configure your Whelen WeCan lightbar!

- Control your warning lights, siren and Traffic Advisor™ functions from a single keypad.
- Choose from five models with easy-to-operate control heads with "Hands-Free" siren operation.
- Two series to choose from for compatibility with Traffic Advisors: CCSRN operates Whelen 2-wire Traffic Advisors that do not require external controls. CCSRNT operates 9-wire Traffic Advisors that do require external controls.
- Solid-state outputs: one 40-Amp, two 20-Amp, four 10-Amp, and four 250-milliAmp.
- Relay output: one 10-Amp dry contact relay.
- Lightbar: 1 Phoenix™ style connector for a WeCan Series lightbar.
- Integrated Traffic Advisor connection on CCSRNT Series.
- Four positive or ground activated inputs, including a horn-ring input.
- Easy to configure using the included CenCom Sapphire Windows® application.
- Configured programs may be extracted, modified and stored for ease of service and reuse.
- A USB port on the Amplifier Control Module provides easy access for programming.
- Each button is individually customizable for numerous button types (Press on/Press off, momentary, etc.).
- Control head backlighting can be easily turned on or off for high visibility on patrol or blacked out for discrete night operations.
- Brightly backlit push-buttons include standard function labels to choose from.
- Rugged, aluminum-housed Amplifier Control Module is field-serviceable with easy access to fuses and connections.
- Operates one or two 100 watt siren speakers.
- PA microphone with plug-in connector and 20' microphone cable are included.
- Includes all pigtailed and connectors.
- Rugged CAT-5 cable connects the control head to the Amplifier Control Module.
- Five year warranty.
- Meets or exceeds all applicable SAE, California Title XIII and NFPA requirements with various Whelen speakers.
- Size, Amp: 3" (78mm) H x 8-1/4" (210mm) W x 6-3/4" (171mm) D.



MODELS

CCSRN3

3-Position slide switch and 18 push-button control head with Amplifier Control Module with pigtailed, microphone and CCMICX20 extension cable. Size: 3-1/2" (89mm) H x 6-7/8" (174mm) W x 1-5/16" (33mm) D.

New! CCSRN3A

Same as CCSRN3, except with 8 (positive or negative) input expansion module, 12 total inputs.

CCSRN32

3-Position progressive push-button switches and 18 push-button control head with amplifier module with pigtailed, microphone and CCMICX20 extension cable (Size: same as CCSRN3).

CCSRN33

Single master push-button switch and 18 push-button control head with amplifier module with pigtailed, microphone and CCMICX20 extension cable (Size: same as CCSRN3).

CCSRN34

3-Position slide switch and 6 push-button control head with amplifier module with pigtailed.

CCSRN35

3-Position progressive push-button switches and 9 push-button hand held control head with amplifier module with pigtailed.

New! CCSRN36

3 section control head and 8 push-button, 4-position slide switch and a 7 position rotary knob. Manual, airhorn plus 3 Traffic Advisor switches. (Size: same as CCSRN3).

New! CCSRN3F

Same as CCSRN36, except with 8 (positive or negative) input expansion module, 12 total inputs.

CCSRNTA3

Same as CCSRN3, with Traffic Advisor module.

New! CCSRNTA3A

Same as CCSRNTA3, except with 8 (positive or negative) input expansion module, 12 total inputs.

CCSRNT32

CCSRNT33

CCSRNT34

CCSRNT35

CCSRNT36

New! CCSRNT3F

Same as CCSRNT36, except with 8 (positive or negative) input expansion module, 12 total inputs.

OPTION

CCTRIM

Trim ring for semi-flush mounting of control head.

WHELEN® SIREN AMPLIFIERS

NEW 295SDA1 SIREN FEATURES

- User definable functionality!
- Two independent siren amplifiers in one housing. Each can drive one 100 watt siren speaker.
- Short circuit and under/over voltage protection.
- LED indicators for speaker and input voltage diagnostics.
- California Title XIII compliant tone setup.
- Multiple programmable tones with Radio Repeat and PA.
- Horn-ring transfer relay built-in.
- Siren "in use" icon appears on video recording to confirm siren activation.
- Three 20 amp relay controlled outputs with built-in fuses.
- Eight 10 amp relay controlled outputs with built-in fuses (two of them include a choice of independent inputs or the standard power bus switching).
- Siren disable (Park Kill) control input.

- Two wire Traffic Advisor™ control.
- Two year warranty.

CONTROLLER FEATURES

- Eleven programmable power distribution switches.
- All switches can be programmed to activate any combination of the relay outputs.
- Any light control switch can be programmed to activate any of the 8 momentary switches.
- Programmed momentary switches.
- Copy siren/switch configuration to another unit.
- Easy reset to factory default settings.
- Size Controller:
3-1/2" (89mm) H x 6-7/8" (175mm) W x 1-1/4" (32mm) D.
- Size Amplifier:
2-1/4" (57mm) H x 8-5/8" (219mm) W x 7-1/8" (180mm) D.
- Weight: 5.25 lbs. (2.38kg)



**DUAL
AMPLIFIER!**

HHS2200 REMOTE SIREN WITH HAND HELD CONTROLLER

- User definable functionality!
- Compact hand held controller with built-in microphone.
- Multiple programmable siren tones.
- Easily control all light and siren functions.
- Hands-Free feature.
- Moisture resistant.
- Features twelve rubberized, backlit push-buttons.
- Progressive 3-position push-button lighting control.
- Microprocessor controlled and rated for up to two 100 watt speakers.
- Meets SAE Class 1 when used with Whelen 100 watt speakers.
- Size: Amp/Relay module: 2-1/2" (65mm) H x 8" (203mm) W x 7" (184mm) D.
Control head: 5-5/16" (135mm) H x 2-1/4" (57mm) W x 1-1/8" (28mm) D.



GAMMA2™ 100 WATT SELF-CONTAINED ECONOMICAL SIREN

- Meets SAE Class A sound requirements when used with most 100 watt speakers.
- Meets California Title XIII requirements.
- Twenty-three Scan-Lock™ siren tones.
- Two On/Off 20 amp auxiliary rocker switches with LED "On" indicators, control auxiliary equipment.
- Stand-by button provides Hands-Free operation/override from horn ring.
- Tone button activates Wail tone (may be programmed for other tones).
- Manual button generates a variety of tones as pre-selected by user, up to 3 tones.
- Horn button generates an Airhorn tone.
- Easy to install with standard bail-strap mounting bracket.
- 2 year warranty.
- Size: 2-1/4" (57mm) H x 5-3/8" (137mm) W x 5-1/2" (140mm) L.



EPSILON™ ECONOMIC SELF-CONTAINED ELECTRONIC SIREN

- Single or dual speaker versions.
- Unit provides a PA volume control knob for the noise cancelling microphone, On/Off switch, manual button and 7-position tone/radio rotary switch.
- Meets SAE Class A sound requirements when used with most 100 watt speakers.
- LED backlighting.
- Nine Scan-Lock siren tones to choose from; Three are California Title 13 compliant.
- Hands-Free operation/override from the horn ring.
- Includes all the necessary mounting hardware and input pigtail connector.
- Pre-wired with quick disconnect plug for easy service and prompt replacement.
- 12 VDC.
- 2 year warranty.
- Size: EPSL1: 2-1/4" (57mm) H x 5-7/8" (149mm) W x 5-3/4" (146mm) D.
EPSL2S6/9: 3-1/4" (83mm) H x 5-15/16" (150mm) W x 5-5/8" (143mm) D.

EPSL1: 100 watt amplifier.

EPSL2S6: Siren amplifier with six switch controlled outlets. Operates one or two 100 watt siren speakers.

EPSL2S9: Siren amplifier with four position slide switch and six On/Off toggle switches. Operates one or two 100 watt siren speakers.



For product specifications see page 27

Siren Amplifiers

295 SERIES SIREN AMPLIFIERS

- AMECA certified to meet Class A requirements of SAE, KKK1822 and California Title XIII specifications (Certifications are based on siren and speaker combination).
- Can run one 100 watt or two 100 watt speakers.
- Hands-Free operation, real-time Diagnostix™.

- Adjustable microphone and radio repeat volume controls.
- Standard features include manual, Wail, Yelp, Airhorn and Piercer Tones.
- SI TEST®, fully diagnostic silent test of amplifier and speaker(s).
- Adjustable intensity backlighting in soft LED non-glare Green.
- Exclusive five year, HDP® Heavy-Duty Professional warranty.

295SLSA1

- Full function siren with multiple Scan-Lock™ siren tones.
- Park-kill, radio repeat and public address.
- Operates up to two 100 watt speakers.
- Backward compatible with 295HFS1.
- Pre-wired unidirectional microphone.
- Size: 2-1/2" (63mm) H x 6" (152mm) W x 7" (178mm) D.
Weight: 4 lbs. 10 oz. (2.1kg).



295HFS2

- Remote full function siren amplifier with flush mounted control head.
- Operates up to two 100 watt speakers.
- Hard-wired microphone.
- Control Head Size: 2-7/8" (73mm) H x 6-1/4" (159mm) W x 2-3/8" (60mm) D.
Weight: 4 lbs. 10 oz. (2.1kg).
- Amplifier Size: 2-3/8" (60mm) H x 6" (152mm) W x 7" (178mm) D.
Weight 3-1/2 lbs., (1.6kg).



295HFS2X

- Same as 295HFS2 except with dual amplifiers, meets California Title XIII specs.

295HFS3

- Remote full function, siren amplifier.
- Compact surface or under dash mount control head.
- Hard-wired microphone.
- Operates up to two 100 watt speakers.
- Control Head Size: 2" (51mm) H x 6" (152mm) W x 2-3/8" (60mm) D.
Weight: 4 lbs., (1.8kg).
- Amplifier Size: 2-3/8" (60mm) H x 6" (152mm) W x 7" (178mm) D.
Weight: 3-1/2 lbs., (1.6kg).



295HFS4

- Remote full function lights and siren amplifier with surface mount control head.
- Six low current switches and three position slide switch.
- LED lighted function "On" indicators.
- Operates up to two 100 watt speakers.
- Directly compatible with Liberty™, Freedom™, Justice® WeCar®, and 9M Series lightbars.
- Hard-wired microphone.
- Control Head Size: 3-3/8" (86mm) H x 6" (152mm) W x 2-3/8" (60mm) D.
Weight: 1-1/2 lbs., (.7kg).
- Amplifier Size: 2-3/8" (60mm) H x 6" (152mm) W x 7" (178mm) D.
Weight: 3-1/2 lbs., (1.6kg).



295HFS5

- Full function, single self-contained unit for siren and light control.
- Low current switching, nine switch light, six function siren.
- Operates up to two 100 watt speakers.
- Park-kill, timed out relay, and California tones.
- Hard-wired microphone.
- Size: 3-5/16" (84mm) H x 6" (152mm) W x 8-3/8" (213mm) D.
Weight: 4-1/2 lbs., (2kg).



For product specifications see page 27

Siren Amplifiers

295SLSA6

- Self-contained siren and high current light controller with multiple Scan-Lock™ siren tones.
- Operates up to two 100 watt speakers.
- Nine individually programmable switches.
- Park-kill, timed out relay, and California tones.
- Hard-wired microphone.
- Size: 3-5/16" (84mm) H x 6" (152mm) W x 7" (178mm) D.
- Weight: 4-1/2 lbs., (2kg).



295HFSA7

- Dual remote 200 watt, flush mount control head with removable microphone.
- Six function siren with radio repeat and PA.
- Operates two 100 watt speakers in dual or mono modes.
- Surface mount control head.
- External dip switch selectable modes of operation.
- Size: 2-1/2" (64mm) H x 6-7/8" (175mm) W x 2-3/4" (70mm) D.
- Weight: 4-1/2 lbs., (2kg).



295HFSC9

- Self-contained, 200 watt, dual or mono sound control.
- Operates up to two 100 watt speakers.
- Eight programmable operating profiles.
- Park-kill, siren shut-down, radio repeat, mechanical siren, airhorn, and California tones.
- Removable microphone.
- California Title XIII compliant.
- Short circuit protection.
- Size: 2-1/4" (57mm) H x 6" (152mm) W x 7" (177mm) D.
- Weight: 4 lbs. 7 oz.



295HFSDA

- Second 100/200 watt amplifier and interconnect kit for dual amplifier operation for use with 295HFS2, 295HFS3 or 295HFS4 systems.
- Amplifier Size: 2-3/8" (60mm) W x 7" (178mm) D.
- Weight: 3 lbs., (6.6kg).

WPKM1

- Park-kill connection module, 30 amp (for 295SLSA1, 295HFSA5 and 295SLS6 Series only).



295HFSDA

Economically Priced Electronic Sirens

295SL100

- Full function siren plus radio repeat and public address.
- Operates up to two 100 watt speakers.
- Includes Hands-Free operation and multiple Scan-Lock siren tones (patent pending).
- Self-contained unit for under-dash mounting.
- Hard-wired noise cancelling microphone.
- Backward compatible to the original 295HF100 and WS2100 Series.
- Two year warranty.
- Size: 2-1/2" (64mm) H x 6" (152mm) W x 5-1/2" (138mm) D.
- Weight: 3 lbs. 12 oz., (1.7kg).

295SL101

- Similar to 295SL100 except includes a removable microphone and volume control knob.



295SL100

295SL101

For product specifications see page 27

SIREN AMPLIFIERS & SPEAKERS

Siren Amplifiers

POWER AIRHORN™ SERIES

- Perfect for volunteer fire personnel, security, escort and undercover vehicles.
- Delivers 100 watts of power to a 100 watt siren speaker (purchased separately).
- Housing mounts the in trunk, under the seat or other remote location.

PAH112 Power Airhorn 100 watt amplifier, 12.8 VDC.
Size: 2-1/2" (64mm) H x 5-7/8" (149mm) W x 6-3/4" (171mm) D. Weight: 2.5 lbs., (1.14kg).

PAP112 Power Airhorn Plus™ 100 watt amplifier with microphone.

PAPEXT15 Optional 15' extension cable for PAP112 microphone.



ALPHA™ SERIES

- Economical, four tone, 100 watt siren.
- For applications not requiring Public Address or Radio Repeat.
- Meets Class A requirements with most 100 watt speakers. 12 VDC.

ALPHA12S Self-contained 12 VDC siren.
Size: 2-1/2" (64mm) H x 6" (152mm) W x 4-5/8" (117mm) D. Weight: 2 lbs., 4 oz. (1kg).

ALPHASL Remote 12 VDC selectable four tone Hands-Free siren amplifier for a single 100 watt speaker. Requires separate switches, sold separately (replaces ALPHA12R).
Size: 2-1/4" (54mm) H x 5" (127mm) D x 4-3/4" (120mm) L. Weight: 2 lbs., 7oz. (1.1kg).

ALPHA 1-5 Choose from one to five optional switches for use with ALPHASL.



BETA™ SERIES

- Economical, four tone 100 watt siren amplifier with Radio Repeat and Public Address.
- Hands-Free operation.
- Meets Class A requirements with most 100 watt speakers.
- Dip switches on the rear of the amplifier allows for easy set-up and configuration to most local requirements.
- 12 VDC.

BETA112R Remote 12 VDC siren amplifier with PA and radio repeat.
Size: 2-3/8" (60mm) H x 7-1/8" (181mm) W x 5-1/2" (140mm) D. Weight: 2 lbs., 7oz. (1.1kg).

BETA1 Control head with noise cancelling microphone. 15' cable. Requires BETA112R siren amplifier, sold separately.

BETA2 Fully encapsulated surface mount control head is moisture resistant. Sealed toggle and rotary switches. Removable noise canceling microphone. 20' cable and connectors. Requires BETA112R siren amplifier, sold separately.
Size: 1-3/4" (44mm) H x 4-1/4" (108mm) W x 2" (51mm) D. Weight: 1 lb., 4 oz. (.6kg).



Siren Speakers

PROJECTOR™ SERIES

- High performance, multi-port 100 watt speaker.
- Narrow, non-corrosive aluminum or nylon composite housing.
- Installs to vehicle's cross member in minutes.
- All models exceed CA Title XIII, Class A and SAE J1849 requirements.
- Options include mounting brackets for many police vehicles and motorcycles. Refer to current price list for details.
- Size: SA314: 6-3/16" (156mm) H x 6-7/16" (163mm) W x 3-1/8" (79mm) D.
SA315: 6-1/2" (165mm) H x 6-1/2" (165mm) W x 2-7/8" (74mm) D.

SA314A Natural cast aluminum.

SA314B Black epoxy coated cast aluminum.

SA315P Black nylon composite.



SA340TS High efficiency plastic rectangular speaker horn.
Size: 5" (127mm) H x 8" (203mm) W x 7" (178mm) D. Weight: 11lbs., (5kg).

SA340STS Compact, round aluminum speaker horn. 100 watt, high efficiency driver.
Size: 5-5/8" (143mm) H x 5-5/8" (143mm) W x 6-13/16" (173mm) D. Weight: 11lbs., (5kg).



For product specifications see page 27

Howler™ Low Frequency Tone Siren and Speaker System

An added layer of warning for intersections and high risk areas when used with your 100/200 watt siren amplifier. Howler provides deep, low frequency tones, which penetrate other vehicles, alerting drivers and pedestrians of your approach. Howler is not a replacement to the vehicle's primary siren; Howler adds a minimum eight second penetrating burst of low frequency siren sound for use in heavy traffic, intersections or other high ambient noise conditions.



FEATURES

- The Howler is an add-on to any 100-200 watt warning siren such as the Whelen 295SL Series.
- Howler's low-frequency tones are synchronous with your primary siren tones to penetrate high noise, high traffic situations, alerting drivers and pedestrians of your approach.
- Works with any sweeping tone, plus Hi/Low and electronic mechanical tone generated by the primary siren.
- Adds an 8 to 60 second (customer programmable) penetrating burst for use in heavy traffic, intersections or other high ambient noise situations.
- Select from 3 frequency bands and 8 tone durations.
- Push-on/Push-off button activates/deactivates the siren, allowing radio transmission to the vehicle without waiting for the unit to time out.
- Models available with one or two speakers.
- Built-in timer limits over-exposure time to operator (approved hearing protection advised).
- Choose from a host of vehicle specific mountings. Consult current price list for vehicle listings.
- Size: Speaker without bracket: 7-1/4" (184mm) Dia. x 9" (229mm) L.
 Amplifier: 2-1/4" (54mm) H x 5" (127mm) D x 4-3/4" (120mm) L.

Howler low frequency tone siren, includes siren amplifier and speaker(s), Works in conjunction with existing siren systems purchased separately.

MODELS

- HWLCC11** Chevy Caprice, 2011-2013, Siren Amplifier with one Speaker, includes mounting bracket.
- HWLFT11** Ford Taurus, 2010-2014 and Police Interceptor, 2013-2014, Siren amplifier with one speaker, includes mounting bracket.
- HWLCI12** Chevy Impala, 2012, Siren amplifier with one speaker, includes Mounting Bracket. Requires SA315P with SAK46 purchased separately.
- HOWLER2** Ford Expedition, 2008-2013, Siren amplifier with two speakers and mounting brackets.
- HOWLER4** Ford E-Series, 2008-2011, Siren amplifier with two speakers and mounting brackets.
- HOWLER5** Chevy Suburban 1/2 Ton, 2008-2013 and Chevy Tahoe, 2008-2013, Siren amplifier with two speakers and mounting brackets.
- HOWLER7** Chevy Impala, 2008-2011, Siren amplifier with two speakers and mounting brackets.
- HOWLER9** Chevy 2500/3500 Silverado and Chevy Suburban 3/4 Ton, 2009-2011, Siren amplifier with two speakers and mounting brackets.
- HOWLER11** Chevy Express G-Series, 2011, Siren amplifier with two speakers and mounting brackets.
- HOWLER12** Ford F250-F550 Super-Duty, 2011-2013, Siren amplifier with two speakers and mounting brackets.
- HOWLER13** Ford Explorer, 2011-2014 and Police Interceptor Utility, 2013-2014, Siren amplifier with two speakers and mounting brackets, driver side bracket includes built-in mounting for a SA315P speaker.
- HOWLER14** Dodge 4500, 2011, Siren amplifier with two speakers and mounting brackets.
- HOWLER15** Dodge Charger (not for V6), 2011-2013, Siren amplifier with two speakers and mounting brackets.
- HOWLER18** Chevy 2500/3500 Silverado and Chevy Suburban 3/4 Ton, 2012-2013, Siren amplifier with two speakers and mounting brackets.



POWER CONTROL CENTERS & SWITCHES

PCCS9RW AND PCCS9NP

- Nine switch functions with programmable slide lever for 3 primary warning controls.
- Low profile, all extruded aluminum housings.
- LED On/Off indicators.
- Six push-button switches for secondary functions.
- Backlighted legend windows and 72 standard press-on legend tabs.
- Adjustable bail brackets.

PCCS9NP: Programmable low current control switch center for use with Liberty™, Freedom™, Justice® WeCan®, Legacy™ and other lightbars with low current switching (3 position slide switch, 6 push-on/push-off buttons for secondary lightbar functions).

New! PCCS9RW: High current with built-in relays, for lightbars that use standard switching. Connects to most lightbars and auxiliary warning equipment without the use of separately mounted relays or relay boxes. Front panel programming slide switch with three 20 amp relays. Six front panel programmable push-buttons with 20 amp relays for secondary lightbar functions. Momentary contact for strobe low power, trunk lock or gun lock.



PCCS9NP



PCCS9RW



PCC4W, PCC6W AND PCC10W

- Four, six or ten lighted SPST switches rated 25 amps peak.
- Rear mounted "captive" terminal block for easy installation.
- Backlighted legend windows and 72 standard press-on legend tabs.

PCC4W: Four 25 amp switches.

PCC6W: Six 25 amp switches.

PCC10W: Ten 25 amp switches.

New! PCC6W1: Similar to PCC6W, except last On/Off switch is replaced with a Momentary Switch.

New! PCC10W1: Similar to PCC10W, except last On/Off switch is replaced with a Momentary Switch.



PCC6W1

PCC6W



PCC10W

PCC4W



PCC10W1

SWITCH BRACKETS

1SWITCH, 2SWITCH, 3SWITCH and 4SWITCH:

- One, two, three or four PC switch brackets available.
- Choice of illuminated or non-illuminated switches. Specify switch type described below.

PC-1: Single pole, single throw, Illuminated - On/Off.

PC-2: Single pole, single throw, Momentary - On.

PC-3: Single pole, double throw, Illuminated - On/Off/On.

PC-4: Single pole, double throw - On/On.

PC-5: Double pole, double throw - On/Off/On.

PC5S: Double pole, double throw, for Strobe - Hi/Off/Low power control.



PCC8R - 8 FUNCTION POWER CONTROL CENTERS

- Eight position key pad with remote relay box.
- Eight function control center with three 20 amp relays and five 10 amp relays.
- Not programmable.
- Diagnostic feedback for relay confirmation.
- Push-On/Push-Off or momentary activation.
- LED backlighted membrane switches are designed with a solid rubber overlay for moisture resistance.
- 12-volt or isolated switching.
- Ignition control available via dip switch.
- 70 Amps maximum.



WCC9 - WECAN® ELECTRONIC CONTROL HEAD

- For use with Liberty, Freedom and Justice WeCan lightbars.
- Hand held or mounted to the dash or console, the WCC9 replaces the standard ECM (Electronic Control Module).
- May be used with most existing WeCan lightbars or substituted for the WeCan ECM at the time of lightbar purchase.
- Easy to program, install and control.
- Control warning lights, take-downs, alley lights and Traffic Advisor™ from a single key pad.
- Control lightbar functions using six pre-programmed control buttons plus a 3 position slide switch.
- Small 22-gauge, 2-conductor cable mates to your WeCan lightbar for easy installation.
- Ten pre-programmed popular warning configurations via 4 dip switches located on the rear of the controller.
- No computer required to program control head.
- LED backlighted push-buttons with bright LED On/Off indicators. Function labels are included.
- Membrane switches provide tactile feedback of activation and are equipped with a solid rubber overlay for moisture resistance.
- Surface mounting plate allows for vertical or horizontal mounting of control head.
- 5-conductor, 3' input/output harness standard.



LIGHTBAR SPECIFICATIONS

LEGACY™ SERIES LIGHTBARS

Model	VDC	Amp Draw (per corner lamp)	Maximum Number of Modules	Type of Corner Modules	Dimensions in inches and (mm) H x W x L
GB4****	12	3 A / peak 1.2 A / average	18	Multi-Angled	1-5/8 (41mm) x 11-5/16" (287mm) x 43-1/4" (110cm)
GB4####					1-5/8 (41mm) x 11-5/16" (287mm) x 48" (123cm)
GB8****			22		1-5/8 (41mm) x 11-5/16" (287mm) x 54" (136cm)
GB8####					
GB2****					
GB2####					

OPTIONS INCLUDE: One Single Color DUO+™ Short or Long Super-LED® Lighthouse • One Dual Color DUO+ Short or Long Super-LED lighthouse • Two Short or Long Super-LED Take-Down Lights • Two Super-LED Alley Lights • One Single or One Dual Color Super-LED DUO+ Warning/Warning or Warning/Alley Light

LFL LIBERTY™ "SW" & "SA" WECAN® PROGRAMMABLE LIGHTBARS

Model	Voltage	Amp Draw (per corner lamp)	Maximum Number of Modules	Type of Corner Modules	Dimensions in inches and (mm) H x W x L
SW4 / SA4	12.8	1.5	14 (19 with split TA)	4 Extended Linear-LED® modules	2-1/2 (64) x 12 (304) x 43-1/8 (109cm)
SW8 / SA8			18 (24 with split TA)		2-1/2 (64) x 12 (304) x 48-1/2 (123cm)
SW2 / SA2			18 (24 with split TA)		2-1/2 (64) x 12 (304) x 53-7/8 (137cm)

LFL LIBERTY "SR" & "SB" WECAN PROGRAMMABLE LIGHTBARS

SR4 / SB4	12.8	2	14 (19 with split TA)	4 extra high intensity extended modules	2-1/2 (64) x 12 (304) x 43-1/8 (109cm)
SR8 / SB8			18 (24 with split TA)		2-1/2 (64) x 12 (304) x 48-1/2 (123cm)
SR2 / SB2			18 (24 with split TA)		2-1/2 (64) x 12 (304) x 53-7/8 (137cm)

OPTIONS INCLUDE: Adjustable Color Flashing LR11 Super-LEDs in Alley Light Position • Adjustable LR11 Super-LED Flashing Take-Downs and Alley Lights • Adjustable Dual LR11 Super-LED Flashing Take-Downs • Inboard Super-LED Directional Modules • Adjustable LR11 LED Work Lights • Super-High Intensity LED Work Lights • Remote Strobe for Center Section • Halogen Work Lights • LED Brake/Tail/Turn Lights • Five or Six Lamp Linear-LED Split Traffic Advisor, with or without Control Head • GTT Opticom™ Emitter • Driver side Cable Exit • Solar Panel

LFL LIBERTY "SX" & "SY" SERIES LIGHTBARS

Model	Voltage	Amp Draw (per corner lamp)	Maximum Number of Modules	Type of Corner Modules	Dimensions in inches and (mm) H x W x L
SX4 / SY4	12.8	1.5	14 (19 with split TA)	4 Extended Linear-LED modules	2-1/2 (64) x 12 (304) x 43-1/8 (109cm)
SX8 / SY8			18 (24 with split TA)		2-1/2 (64) x 12 (304) x 48-1/2 (123cm)
SX2 / SY2			18 (24 with split TA)		2-1/2 (64) x 12 (304) x 53-7/8 (137cm)

LFL LIBERTY "SP" & "SZ" SERIES LIGHTBARS

SP4 / SZ4	12.8	2	14 (19 with split TA)	4 extra high intensity extended modules	2-1/2 (64) x 12 (304) x 43-1/8 (109cm)
SP8 / SZ8			18 (24 with split TA)		2-1/2 (64) x 12 (304) x 48-1/2 (123cm)
SP2 / SZ2			18 (24 with split TA)		2-1/2 (64) x 12 (304) x 53-7/8 (137cm)

OPTIONS INCLUDE: Adjustable Color Flashing LR11 Super-LEDs in Alley Light Position • LR11 Super-LED Flashing Take-Down and Alley Lights • Dual LR11 Super-LED Flashing Take-Downs and Alley Lights • Super High Intensity LED Work Lights • LR11 Super-LED Flashing Alley Lights • Inboard Super-LED Directional Modules • Super-LED High Intensity, Flashing Take-Downs • Remote Strobe for Center Section • Cruise Light Mode of Corner Linear-LED • Five or Six Lamp Linear-LED Traffic Advisor, with or without Control Head • Criss-Cross Flash Pattern of End Linear-LEDs



LIGHTBAR SPECIFICATIONS

LIBERTY™ DUO™ “SA” & “SY” PROGRAMMABLE LIGHTBARS

Model	Voltage	Amp Draw (per corner lamp)	Maximum Number of Modules	Type of Corner Modules	Dimensions in inches and (mm) H x W x L
SA4 / SY4	12.8	1.5	4 Single Color & 10 DUO Modules (Plus two alley light modules)	4 single color modules	2-1/2" (64mm) H x 12" (304mm) W x 43-1/8" (109cm)
SA8 / SY4			4 Single Color & 12 DUO Modules (Plus two alley light modules)		2-1/2" (64mm) H x 12" (304mm) W x 48-1/2" (123cm)
SA2 / SY4			2-1/2" (64mm) H x 12" (304mm) W x 53-7/8" (137cm)		

LIBERTY DUO “SB” & “SZ” PROGRAMMABLE LIGHTBARS

SB4 / SZ4	12.8	1.5 Single Color .75 DUO Color	4 Single Color & 10 DUO Modules (Plus two alley light modules)	Choice of 4 single or DUO color modules	2-1/2" (64mm) H x 12" (304mm) W x 43-1/8" (109cm)
SB8 / SZ4			4 Single Color & 12 DUO Modules (Plus two alley light modules)		2-1/2" (64mm) H x 12" (304mm) W x 48-1/2" (123cm)
SB2 / SZ4			2-1/2" (64mm) H x 12" (304mm) W x 53-7/8" (137cm)		

OPTIONS INCLUDE: One Duo color inboard Super-LED® directional lighthouse • Two LR11 Super-LED flashing alley lights with 15° horizontal adjustment • Two LR11 Super-LED flashing take-down lights with 15° horizontal adjustment • Two dual LR11 Super-LED flashing take-down lights with 15° horizontal adjustment • Two super high intensity LED take-down lights • Two super high intensity LED work lights • Five DUO color Linear Super-LED Traffic Advisor (for SY and SZ Series Only) • Six DUO color Linear Super-LED Traffic Advisor (for SZ and SY Series Only) • Five DUO color Linear Super-LED Traffic Advisor, WeCan Series only • Six DUO color Linear Super-LED Traffic Advisor, WeCan Series only • Photo cell option for Hi/Low power (WeCan series Only) • Quick disconnect plug for WeCan • Solar panel to reduce parasitic draw, for low-current series with passenger side cable exit • Solar panel to reduce parasitic draw, for WeCan series with passenger side cable exit

LIBERTY™ TRIO PROGRAMMABLE LIGHTBARS

Model	Voltage	Amp Draw (per corner lamp)	Maximum Number of Modules	Type of Corner Modules	Dimensions in inches and (mm) H x W x L
TRIO WE CAN® PROGRAMMABLE LIGHTBARS					
S34	12.8	1	13 Trio Modules (Plus two take-downs & 2 alley lights)	4 corner 3-Color Modules	2-1/2" (64mm) H x 12" (304mm) W x 43-1/8" (109cm)
S38			14 Trio Modules (Plus two take-downs & 2 alley lights)		2-1/2" (64mm) H x 12" (304mm) W x 48-1/2" (123cm)
S32			2-1/2" (64mm) H x 12" (304mm) W x 53-7/8" (137cm)		

OPTIONS INCLUDE: Substitute a Single high intensity take-down light for the single dual LR11 take-downs (44" TRIO bars only) • Substitute two dual LR11 take-down lights for two single LR11 take-down lights (48" and 54" TRIO lightbars only) • Substitute Two super high intensity take-down lights for two single LR11 take-down lights (48" and 54" TRIP lightbars only)



LIGHTBAR SPECIFICATIONS

JUSTICE "JC" COMPETITOR™ LIGHTBARS					
Model	Voltage	Amp Draw (per corner lamp)	Maximum Number of Modules	Type of Corner Modules	Dimensions in inches and (mm) H x W x L
JC4	12.8	1.5	20	4 Linear-LED® modules with 9 Super-LEDs per module	2-1/2" (64) x 12" (304) x 44" (112cm)
JC8			24		2-1/2" (64) x 12" (304) x 50-1/8" (127cm)
JC2			24		2-1/2" (64) x 12" (304) x 56-1/4" (143cm)
JUSTICE "JE" COMPETITOR LIGHTBARS					
JE4	12.8	1	20	4 Linear-LED modules with 6 Super-LEDs per module	2-1/2" (64) x 12" (304) x 44" (112cm)
JE8			24		2-1/2" (64) x 12" (304) x 50-1/8" (127cm)
JE2			24		2-1/2" (64) x 12" (304) x 56-1/4" (143cm)

OPTIONS INCLUDE: CON3™ Modules • LTR3™ Modules • LIN6™ Modules • Adjustable LR11 Alley and Take-Down Lights • LED Brake/Tail/Turn • MR11 Flashing Take-Downs • Traffic Advisor™

JUSTICE "JV" WECAN® PROGRAMMABLE LIGHTBARS					
Model	Voltage	Amp Draw (per corner lamp)	Maximum Number of Modules	Type of Corner Modules	Dimensions in inches and (mm) H x W x L
JV4	12.8	1.5	22	4 Linear-LED modules with 9 Super-LEDs per module	2-1/2" (64) x 12" (304) x 44" (112cm)
JV8			26		2-1/2" (64) x 12" (304) x 50-1/8" (127cm)
JV2			26		2-1/2" (64) x 12" (304) x 56-1/4" (143cm)
JUSTICE "JY" WECAN PROGRAMMABLE LIGHTBARS					
JY4	12.8	1	22	4 Linear-LED modules with 6 Super-LEDs per module	2-1/2" (64) x 12" (304) x 44" (112cm)
JY8			26		2-1/2" (64) x 12" (304) x 50-1/8" (127cm)
JY2			26		2-1/2" (64) x 12" (304) x 56-1/4" (143cm)

OPTIONS INCLUDE: Adjustable LR11 Super-LED® Flashing Take-Downs and Alley Lights • External Alley and Warning Pods at end of the lightbar • Adjustable Color Flashing LR11 Super-LEDs in Alley Light Position • Super High Intensity LED Work and Take-Down Lights • CON3 Modules • LTR3 Modules • LIN6 Modules • LED Brake/Tail/Turn • Traffic Advisors

DELTA™ ROTA-BEAM™ SERIES LIGHTBARS					
Model	VDC	Amp Draw (per rotator)	Maximum Number of Modules	Type of Corner Modules	Dimensions in inches and (mm) H x W x L
DS8****	12	2.25 A / peak 1.2 A / average	5 Solid-State Rotators	2 Solid-State Rotators	5-1/2" (140mm) x 16-3/4" (425mm) x 49-3/4" (126cm)
DS2****					5-1/2" (140mm) x 16-3/4" (425mm) x 56-5/16" (143cm)

OPTIONS INCLUDE: One single color Super-LED® beacon • One dual color Super-LED beacon • Angled mirror • Two LR11 Super-LED take-down lights with 15° horizontal adjustment • Two dual LR11 Super-LED take-down lights with 15° horizontal adjustment • Two LR11 Super-LED alley lights with 15° horizontal adjustment • Two dual LR11 Super-LED alley lights with 15° horizontal adjustment • One Super-LED lighthouse, requires optional DSFLASH • Flasher for front or rear DSD*, purchased separately, up to two per bar. Each front or rear flasher controls up to 4 lights (8 total)



LIGHTBAR SPECIFICATIONS

ULTRA FREEDOM™ II "FC" SERIES LIGHTBARS

Model	Voltage	Amp Draw (per corner lamp)	Maximum Number of Modules	Type of Corner Modules	Dimensions in inches and (mm) H x W x L
FC4	12.8	2.5	16 (30 split over/under)	4 extended over/under Linear-LED modules	3-3/4 (95) x 12 (304) x 44-3/8 (113cm)
FC8			18 (34 split over/under)		3-3/4 (95) x 12 (304) x 49-3/4 (126cm)
FC2			3-3/4 (95) x 12 (304) x 55-1/8 (140cm)		

OPTIONS INCLUDE: Inboard Directional Super-LED modules • Two Duplex Split Color Inboard Super-LED modules • Two Dual Super-LED Flashing Take-Down Lights • Two Halogen Flashing Take-Down Lights • Two Dual LR11 Super-LED Flashing Alleys • Two Halogen Work Lights • Cruise Light Mode of Corner Linear-LED Module • Five or Six Lamp LED Traffic Advisor™ • Five or Six Lamp Linear Super-LED Traffic Advisor, with or without Control Head • Five or Six Lamp Duplex Traffic Advisor, with or without Control Head • Drivers Side Cable Exit • Custom Lengths • Pre-Wired for GTT Opticom™ Emitter for 49" & 55" Lightbars

ULTRA FREEDOM "FW" WECAN® PROGRAMMABLE LIGHTBARS

Model	Voltage	Amp Draw (per corner lamp)	Maximum Number of Modules	Type of Corner Modules	Dimensions in inches and (mm) H x W x L
FW4	12.8	2.5	16 (21 with duplex TA)	4 Extended Linear-LED® modules	3-3/4 (95) x 12 (304) x 44-3/8 (113cm)
FW8			18 (24 with duplex TA)		3-3/4 (95) x 12 (304) x 49-3/4 (126cm)
FW2			3-3/4 (95) x 12 (304) x 55-1/8 (140cm)		

OPTIONS INCLUDE: Inboard Directional Super-LED® modules • Two Duplex Split Color Inboard Super-LED modules • Two Dual Super-LED Flashing Take-Down Lights • Two Halogen Flashing Take-Down Lights • Two Dual LR11 Super-LED Flashing Alleys • Two Halogen Work Lights • Two LED Brake/Tail/Turn Lights • Cruise Light Mode of Corner Linear-LED® Module • Five or Six Lamp LED Traffic Advisor • Five or Six Lamp Linear Super-LED Traffic Advisor, with or without Control Head • Five or Six Lamp Duplex Traffic Advisor, with or without Control Head • Drivers Side Cable Exit • Custom Lengths • Pre-Wired for GTT Opticom Emitter for 49" & 55" Lightbars

ULTRA FREEDOM "FV" WECAN PROGRAMMABLE LIGHTBARS

Model	Voltage	Amp Draw (per corner lamp)	Maximum Number of Modules	Type of Corner Modules	Dimensions in inches and (mm) H x W x L
FV4	12.8	1.6	16 (21 with duplex TA)	4 Linear-LED modules	3-3/4 (95) x 12 (304) x 44-3/8 (113cm)
FV8			18 (24 with duplex TA)		3-3/4 (95) x 12 (304) x 49-3/4 (126cm)
FV2			3-3/4 (95) x 12 (304) x 55-1/8 (140cm)		

OPTIONS INCLUDE: Inboard Directional Super-LED modules • Two Super-LED Flashing Take-Down Lights • Two Dual Super-LED Flashing Alley Lights • Two Halogen Flashing Take-Down Lights • Two Halogen Flashing Alley Lights • Two Dual LR11 Super-LED Flashing Alleys • Two Halogen Work Lights • Two LED Brake/Tail/Turn Lights • Cruise Light Mode of Corner Linear-LED Module • Five or Six Lamp LED Traffic Advisor • Five or Six Lamp Linear Super-LED Traffic Advisor, with or without Control Head • Five or Six Lamp Duplex Traffic Advisor, with or without Control Head • Drivers Side Cable Exit • Custom Lengths • Pre-Wired for GTT Opticom Emitter for 49" & 55" Lightbars

ULTRA FREEDOM "FX" LIGHTBARS

Model	Voltage	Amp Draw (per corner lamp)	Maximum Number of Modules	Type of Corner Modules	Dimensions in inches and (mm) H x W x L
FX4	12.8	2.5	16 (21 with duplex TA)	4 Extended Linear-LED modules	3-3/4 (95) x 12 (304) x 44-3/8 (113cm)
FX8			18 (24 with duplex TA)		3-3/4 (95) x 12 (304) x 49-3/4 (126cm)
FX2			3-3/4 (95) x 12 (304) x 55-1/8 (140cm)		

OPTIONS INCLUDE: Inboard Directional Super-LED modules • Two Super-LED Flashing Take-Down Lights • Two Dual Super-LED Flashing Alley Lights • Two Halogen Flashing Take-Down Lights • Two Adjustable Dual LR11 Super-LED Flashing Alleys • Two Halogen Work Lights • Cruise Light Mode of Corner Linear-LED Module • Five or Six 400 Series LED Traffic Advisor • Five or Six Lamp LED Traffic Advisor • Five or Six Lamp Linear Super-LED Traffic Advisor, with or without Control Head • Drivers Side Cable Exit • Custom Lengths • Pre-Wired for GTT Opticom Emitter for 49" & 55" Lightbars

ULTRA FREEDOM "FL" LIGHTBARS

Model	Voltage	Amp Draw (per corner lamp)	Maximum Number of Modules	Type of Corner Modules	Dimensions in inches and (mm) H x W x L
FL4**	12.8	1.6	9 (front & alley only)	2 front Linear-LED modules	3-3/4 (95) x 12 (304) x 44-3/8 (113cm)
FL8**			10 (front & alley only)		3-3/4 (95) x 12 (304) x 49-3/4 (126cm)
FL2**			3-3/4 (95) x 12 (304) x 55-1/8 (140cm)		

OPTIONS INCLUDE: Inboard Directional Super-LED modules • Two Dual Super-LED Flashing Take-Down Lights • Two Super-LED Flashing Alley Lights • Two Halogen Flashing Take-Down Lights • Two Halogen Flashing Alley Lights • Two Dual LR11 Super-LED Flashing Alleys • Two Halogen Work Lights • Four LED Cruise Lights • Cruise Light Mode of Corner Linear-LED Module • Five or Six 400 Series LED Traffic Advisor • Five or Six Lamp LED Traffic Advisor • Five or Six Lamp Linear Super-LED Traffic Advisor, with or without Control Head • Drivers Side Cable Exit • Custom Lengths • Pre-Wired for GTT Opticom Emitter for 49" & 55" Lightbars

FREEDOM™ ROTA-BEAM SERIES LIGHTBARS

Model	VDC	Amp Draw (per half rotator)	Maximum Number of 180° Solid-State Rotators	Type of Corner Modules	Dimensions in inches and (mm) H x W x L
FR4****	12	2.25 A / peak 1.2 A / average	8	4 180° Solid-State Rotators	3-3/4" (95mm) H x 12" (304mm) W x 44-3/8" (113cm) L
FR8****					3-3/4" (95mm) H x 12" (304mm) W x 49-3/4" (126cm) L
FR2****			9		3-3/4" (95mm) H x 12" (304mm) W x 55-1/8" (140cm) L
FR0****					3-3/4" (95mm) H x 12" (304mm) W x 60" (152cm) L
FR7****			10		3-3/4" (95mm) H x 12" (304mm) W x 72" (183cm) L

OPTIONS INCLUDE: One Super-LED Rota-Beam module • Two LR11 Super-LED Alley Lights with 15° horizontal adjustment • Two dual LR11 Super-LED Alley Lights with 15° horizontal adjustment • Two LR11 Super-LED take-down lights with 15° horizontal adjustment • Two Dual LR11 Super-LED take-down lights with 15° horizontal adjustment • One Super-LED lighthouse, requires optional FRFLASH • Flasher for front or rear FLD*s, purchased separately, up to two per bar. Each front or rear flasher controls up to 4 lights (8 total)

INNER EDGE® LIGHTBAR SPECIFICATIONS

MODELS - DESCRIPTIONS - LAMP TYPE	Chevrolet			Dodge		Ford				
	Caprice 2011-2013	Impala 2005-2012	Suburban, Tahoe & Silverado 1500/2500 2008-2013	Charger 2011-2013	Dodge Ram 2011-2013	Explorer 2011-2014 Utility Interceptor 2013-2014	F150 2012-2013	F250/F350 2012-2013	Taurus 2011-2014 Police Interceptor 2013-2014	Fusion 2013
3-LED (shown in Black)										
Linear-LED® (shown in Green)										
6-LED DUO™ (shown in Purple)										
6-LED LINZ6™ (shown in Red)										
XLP (EXTRA LOW PROFILE) UPPER FRONT SERIES, 3-LED (shown in Black)										
Five lamp, upper front passenger side unit only, with one LED flashing/take-down	IX37UF5P		IX13UF5P	IX35UF5P	IX42UF5P	IX34UF5P	IX41UF4P	IX39UF5P	IX38UF5P	IX43UF5P
Six lamps, upper front passenger side unit only (no take-down)	IX37UF6P		IX13UF6P	IX35UF6P	IX42UF6P	IX34UF6P	IX41UF5P	IX39UF6P	IX38UF6P	IX43UF6P
Ten lamps, upper front two piece unit, individual driver and passenger side units, with two LED flashing/take-downs	IX37UFZ		IX13UFZ	IX35UFZ	IX42UFZ	IX34UFZ	IX41UFZ	IX39UFZ	IX38UFZ	IX43UFZ
Twelve lamps, upper front two piece unit, individual driver and passenger side units (no take-downs)	IX37UFX		IX13UFX	IX35UFX	IX42UFX	IX34UFX	IX41UFX	IX39UFX	IX38UFX	IX43UFX
XLP DUO UPPER FRONT SERIES, DUO 6-LED Upper Front Series (shown in Purple)										
Six 6-LED DUO lamps, upper front passenger side unit only	IW37UF6P		IW13UF6P	IW35UF6P	IW42UF6P	IW34UF6P	IW41UF6P	IW39UF6P	IW38UF6P	IW43UF6P
Twelve 6-LED DUO lamps, upper front two piece unit, individual driver and passenger side units	IW37UFX		IW13UFX	IW35UFX	IW42UFX	IW34UFX	IW41UFX	IW39UFX	IW38UFX	IW43UFX
REAR FACING LOWER, LOW PROFILE 6 or 8 Linear-LED Modules (shown in Green)										
Six lamp programmable for warning or Traffic Advisor		I06LR6L		I35LR6L						
Eight lamp programmable for warning or Traffic Advisor		I06LR8L		I35LR8L						
Six lamp Traffic Advisor with two end flashers (8 lamps total)		I06LR8LT		I35LR8LT						
REAR FACING LOWER, LOW PROFILE LINZ6 LINEAR-LED 6-LED, (shown in Red)										
Eight lamp programmable for warning or Traffic Advisor	IZ37LR8			IZ35LR8					IZ38LR8	
Six lamp Traffic Advisor with two end flashers (8 lamps total)	IZ37LR86			IZ35LR86					IZ38LR86	
Ten lamp programmable for warning or eight lamp Traffic Advisor™	IZ37LRZ			IZ35LRZ					IZ38LRZ	
Six lamp Traffic Advisor with four end flashers (10 lamps total)	IZ37LRZ6			IZ35LRZ6					IZ38LRZ6	
Eight lamp Traffic Advisor with two end flashers (10 lamps total)	IZ37LRZ8			IZ35LRZ8					IZ38LRZ8	

OUTER EDGE® SPECIFICATIONS

OUTER EDGE LIGHTBARS						
Model	Technology	Lighthoods ea. Piece	Amp Draw (per lighthouse)	Vehicle	Housing	FPM
OE13UR8	Warning or Traffic Advisor™	8 LINZ6™ lamps	.75 / peak .35 / average	2008-2012 Chevy Tahoe/Suburban	horizontal mount	requires customer supplied switching
OE13UR8T	Traffic Advisor	8 LINZ6 lamps (6 lamp TA with 2 end flashers)				
RP13**	Warning	6 LINZ6 lamps, 2 Vertex™		2010-2012 Chevy Tahoe	pillar mount	

MINI LIGHTBAR SPECIFICATIONS

Model	Technology	Mount	Light Source	Amp Draw	FPM/Patterns	VDC	Base	Dome/Lens
RESPONDER® HD								
R10HDP*	Super-LED®	permanent	6 duplex 400 Series Linear-LED® modules	9.0 peak 3.6 average	46 Scan-Lock flash patterns including 4 simulated rotating patterns ActionScan default	12	aluminum	color outer dome
R10HDM*		magnetic						
R10HDV*		magnetic/suction						
RESPONDER LP								
R1LPP*	CON3™	permanent	6 CON3 modules	3 peak 1.2 average	46 Scan-Lock™ flash patterns including 4 simulated rotating patterns ActionScan™ default	12	polycarbonate	color outer dome
R1LPM*		magnetic						
R1LPV*		magnetic/suction						
R1LPHP*		permanent					aluminum	
R1LPHM*		magnetic						
R1LPHV*		magnetic/suction						
R2LPP*	LIN6™ Super-LED	permanent	6 LIN6 modules	6 peak 2.4 average	ActionScan™ default	12	polycarbonate	
R2LPM*		magnetic						
R2LPV*		magnetic/suction						
R2LPHP*		permanent					aluminum	
R2LPHM*		magnetic						
R2LPHV*		magnetic/suction						
LIBERTY™								
LT2****P	Super-LED	permanent	4 Linear-LED modules	3 peak 1.2 average	14 Scan-Lock flash patterns (permanent mount only)	12	extruded aluminum	Clear lenses optional color lenses
LT2****M		magnetic						
FREEDOM™								
FT8****P	Super-LED	permanent	4 Dual Linear-LED modules	3 peak 1.2 average	14 Scan-Lock flash patterns (permanent mount only)	12	extruded aluminum	Clear lenses
FT8****M		magnetic						
FT8****F		perm/ front facing						
FREEDOM ROTA-BEAM™								
FB8*0*0P	Super-LED	permanent	2 LED Rotators	2.25 A / peak 1.2 A / average (Per Rotator)	14 Scan-Lock flash patterns	12	extruded aluminum	Clear lenses
FB8****P			4 LED Rotators					
JUSTICE®								
MJY****P	Super-LED	permanent	4 Linear-LED modules	2 peak .8 average	95 Scan-Lock flash patterns	12	polycarbonate on extruded aluminum	Clear lenses
MJY****M		magnetic						
MJY****V		magnetic/suction						

SIREN AMPLIFIERS & CONTROL HEADS

SIREN AMPLIFIERS AND SIREN CONTROL HEADS												
Model	Total Current Draw (amps)	Output Power (watts)	Siren Control	Diagnostic	Tones	# of Siren Tones	Micro-phone	Description	Dimensions in Inches			
CANWC1	8@100w 16@200w	100/200	program-mable siren	no	pro-gram-mable	50	removable	see page 13 for control head choices	Amplifier: 3-1/8" (79mm) H x 7" (194mm) D x 9-1/2" (241mm) L.			
CCSRN						16	removable	see page 14 for control head choices	Amplifier: 3" (78mm) H x 6-3/4" (171mm) D x 8-1/4" (210mm) L.			
295SDA1	8-1 speaker 16-2 speakers	1 or 2 100 watt speakers				20	hard-wired	dual-toned remote siren and power controller	Controller: 3-1/2" (89mm) H x 6-7/8" (175mm) W x 1-1/4" (32mm) D Amplifier: 2-1/4" (57mm) H x 8-5/8" (219mm) W x 7-1/8" (180mm) D			
295SL100					Scan-Lock™	17	removable	economical, full function	2-1/2" (64mm) H x 6" (152mm) W x 5-1/2" (138mm) D			
295SLS101												
295SLSA1			Hands-Free		yes	-	5	hard-wired	self-contained, full function, park kill	2-1/2" (63mm) H x 6" (152mm) W x 7" (178mm) D		
295HFS2									full function, flush mount with remote amp.	(Control Head) 2-7/8" (73mm) H x 6-1/4" (159mm) W x 2-3/8" (60mm) D		
295HFS2X									full function, flush mount with remote amp., dual amplifiers, California Title XIII	(Siren) 2-3/8" (60mm) H x 6" (152mm) W x 7" (178mm) D		
295HFS3	8@100w 16@200w								full function, surface mount with remote amp.	(Control Head) 2" (51mm) H x 6" (152mm) W x 2-3/8" (60mm) D (Siren) 2-3/8" (60mm) H x 6" (152mm) W x 7" (178mm) D		
295HFS4		100/200							full function, surface mount with remote amp., 9 low current switching	(Control Head) 3-3/8" (86mm) H x 6" (152mm) W x 2-3/8" (60mm) D (Siren) 2-3/8" (60mm) H x 6" (152mm) W x 7" (178mm) D		
295HFSA5				self-contained, full function, park kill, time out relay, 9 low current switching					3-5/16" (84mm) H x 6" (152mm) W x 8-3/8" (213mm) D			
295SLSA6				Scan-Lock					17		self-contained, full function, park kill, time out relay, 9 high current switching	3-5/16" (84mm) H x 6" (152mm) W x 7" (178mm) D
295HFSA7	7.8@100w 15.6@200w			pro-gram-mable					12	removable	flush mount, with dual remote siren amp	(Control Head) 2-1/2" (64mm) H x 6-7/8" (175mm) W x 2-3/4" (70mm) D (Siren) 2-1/4" (57mm) H x 9-1/8" (232mm) W x 8" (203mm) D
295HFSC9											self-contained, full function, dual siren	2-1/4" (57mm) H x 6" (152mm) W x 7" (177mm) D
PAH112		100		-					no	-	1	-
PAP112			hard-wired		airhorn tone with public address							
ALPHA12S	8		Hands-Free	pro-gram-mable	4	-	self-contained with switches	2-1/2" (64mm) H x 6" (152mm) W x 4-5/8" (117mm) D				
ALPHASL		200					remote siren amp., optional switches	2-1/4" (54mm) H x 5" (127mm) D x 4-3/4" (120mm) L				
BETA112R		100	-		5			2-3/8" (60mm) H x 7-1/8" (181mm) W x 5-1/2" (140mm) D				
BETA1	n/a	-	Hands-Free				hard-wired	control head for BETA112R amplifier		2" (51mm) H x 4-1/2" (114mm) W x 2-1/2" (64mm) D.		
BETA2							removable	fully encapsulated control head for BETA112R amplifier		1-3/4" (44mm) H x 4-1/4" (108mm) W x 2" (51mm) D		
HHS2200	8-1 speaker 16-2 speakers	1 or 2 100 watt speakers	Hands-Free		pro-gram-mable	37	built-in	hand held controller with built-in microphone, full function, 12 push-buttons		(Control Head) 5-5/16" (135mm) H x 2-1/4" (57mm) W x 1-1/8" (28mm) D (Siren) 2-1/2" H (64mm) x 8" W (203mm) x 7" (184mm) D		
EPSL1	8 @ 100w	100	program-mable for Hands-Free	yes	Scan-Lock	9	hard-wired	full function, California Title XIII tones		2-1/4" (57mm) H x 5-7/8" (149mm) W x 5-3/4" (146mm) D		
EPSL2S6	8 @ 100w	1 or 2 100 watt speakers						similar to EPSL1, six toggle on/off switch outlets		3-1/4" (83mm) H x 6" (151mm) W x 5-5/8" (83mm) D		
EPSL2S9	16 @ 200w							similar to EPSL1, 6 toggle on/of switches plus 4 position slide switch				
GAMMA2	8	100	Hands-Free	no		23	-	economical self contained, two auxiliary switches, SAE Class A, California Title XIII	2-1/4" (57mm) H x 5-3/8" (137mm) W x 4-1/4" (109mm) D			

WHELEN CORPORATE CAPABILITIES



Where it all began.....

It All Started 1952 in a Garage with the First Rotating Beacon.

A privately owned company, Whelen has experienced positive growth for over 60 years. The pride and commitment of its work force, whose employment longevity averages over 22 years, is rewarded through a profit sharing plan established by the Whelen family since the company was founded.

The development of the first aviation light helped launch Whelen into the automotive safety lighting industry as well. Whelen currently provides safety lighting for Police, Fire, EMS, and DOT professionals as well as many other industries. The production volumes seen in the automotive sector have allowed Whelen to invest in the latest automated assembly equipment in order to compete world-wide. Last year Whelen purchased over 44 million LEDs for use in their extensive family of products. And, the aviation division capitalizes on this state-of-the-art manufacturing and buying power, even with their typically low volume production runs. In the 1970s Whelen introduced the Outdoor Warning Siren ... totally electronic and capable of not just warning tones but also high-powered voice messages. The Mass Notification Division has saved lives around the world.

At Whelen Engineering, our goal is to bring innovative, life saving products to market more quickly while maintaining strict quality control throughout the process. We have accomplished this through a vertical manufacturing initiative to eliminate or reduce out-sourcing; the use of robotics and state-of-the-art production equipment; and, perhaps most importantly, a motivated workforce of over 1100 employees. This allows us to meet and adapt to our customer's changing needs in the shortest amount of time.

- Two manufacturing facilities totaling over 586,000 square feet.
- Largest staff of Design Engineers in the industry.
- Research and development.
- Partnering with OEMs on new vehicle design and product integration.
- Plastics injection molding machines from 30 to 2000 tons capacity.
- In-house plastics, hard coating, metallizing, and sheet metal fabrication.
- On-site test lab for environmental dust, moisture, vibration, etc, acoustic anechoic sound chamber, industry certifications (SAE, AMECA, FAA to name a few).
- Sales and Technical Personnel are trained at the factory training center and return for updates on a regular schedule.
- Worldwide network of Sales, Service and Training.

MANUFACTURING FACILITIES



Corporate Headquarters, Chester, Connecticut



Charlestown, New Hampshire Division

WHELEN®

DESIGN & ENGINEERING

The largest staff of Design Engineers in the industry! Many of our Engineers are Fire Volunteers and EMTs so they know firsthand the critical need for life saving, innovative products.



3-D Product Design



Whelen's Professional Design Engineers

INJECTION AND VACUUM MOLDING

1600 molds, 38 molding machines from 30 to 2000 tons, 20 million parts produced every year. Vacuum machines produce irregularly shaped components not suitable for injection molding.



Injection Mold Making



3-D Tool Designs



1700 Ton Molding



3 Trimming Formed Parts Machines



5 Over Molding Electronics Machines



38 Robotic Molding Machines



Die-Cast Tool Making



Aircraft Lens Mold Making

ELECTRONICS MANUFACTURING

Surface mount and through-hole circuit boards are manufactured, assembled and tested In-circuit.



14 Transformer Winding Machines



15 Cable & Wire Machines



5 Electronic Board Assemblies



12 Electronic Board Testing Machines



Electronic Assemblies



SMT Assemblies



Lightbar Production



Automatic Robotic Cable Assembly

AMERICAN EMPLOYEES, AMERICAN MANUFACTURING, AMERICAN PRIDE!

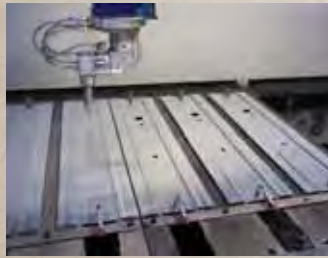


FABRICATION

Robotic and laser cutting and drilling, Robotic Bending Cells for stand-alone operation. All machine parts are produced and maintained by automated production machine shops in New Hampshire and Connecticut.



Five-Axis Laser



Cutting Center



4 Laser Cut Punch & Tapping Centers



8 Metal Forming Machines



Transformer Manufacturing



8 Wire Cutting, Stripping & Terminals Machines



Inventory



Automatic Kit Bagging

FINISHING PROCESSES

Hard coating of lenses and powder coating housings make them resistant to weather and abrasion. Metallizing reflectors add reflectivity and helps prevent corrosion and oxidation.



Powder Coating



Moisture Proof Coatings



Silicone Hard Coating



5 Vacuum Metallizing Reflector Machines

PRODUCTION MACHINE SHOP

The production machine shop uses state-of-the-art milling machines, CNC lathes and screw machines to make the precision parts required for our products.



2 High Speed Screw Machines



Robotic Five-Axis 48 Pallet Milling Center



15 Milling and Turning Centers

AMERICAN EMPLOYEES, AMERICAN MANUFACTURING, AMERICAN PRIDE!



QUALITY CONTROL AND TESTING

Quality Control is maintained throughout the manufacturing process. Certified test labs on site facilitate product development and shorten lead times.



EMI



RF



Corrosion



Atmospheric



Rain



Vibration



Dust



Environmental



Photometric Chamber



Acoustic Chambers



Quality Control & Reliability Testing

REPAIR, SERVICE AND TRAINING

Whelen's Repair Goal is to get product repaired and back out the door to you within 24 hours. Authorized Service facilities are located around the globe. Training is available not only at the Chester Training Facility but at sites around the country. All Whelen Authorized Managing Sales Representatives and technicians return to the plant several times a year for new product introduction and advanced training.



Repair Service Technician



Electronics Technician



Technical Support



Chester Corporate Training Facility



51 Winthrop Road, Chester, CT 06412
860-526-9504 • Fax 860-526-4078
www.whelen.com

Follow Us On...





DISTRIBUTED BY:

WHELEN[®]
ENGINEERING COMPANY, INC.

51 Winthrop Road, Chester, CT 06412-0684
860-526-9504 Fax 860-526-4078
www.whelen.com

Whelen reserves the right to upgrade and improve products without notice.

NASCAR[®] is a registered trademark of the
National Association for Stock Car Auto Racing, Inc.
© 2013 Whelen Engineering Company, Inc. Printed in the USA
Code 11402H-0813

Whelen Trademarks are the property of Whelen Engineering Company, Inc. and may be used only as set forth in the Guidelines for Use of Whelen Trademarks available at www.whelen.com. Unauthorized use of Whelen Trademarks for commercial purposes may constitute trademark infringement and unfair competition in violation of federal and state laws.

Note: The use of a magnetic mounted beacon or lightbar on the roof of a vehicle in motion is not recommended and is at the sole discretion and risk of the user.



American Employees, American Manufacturing, American Pride!