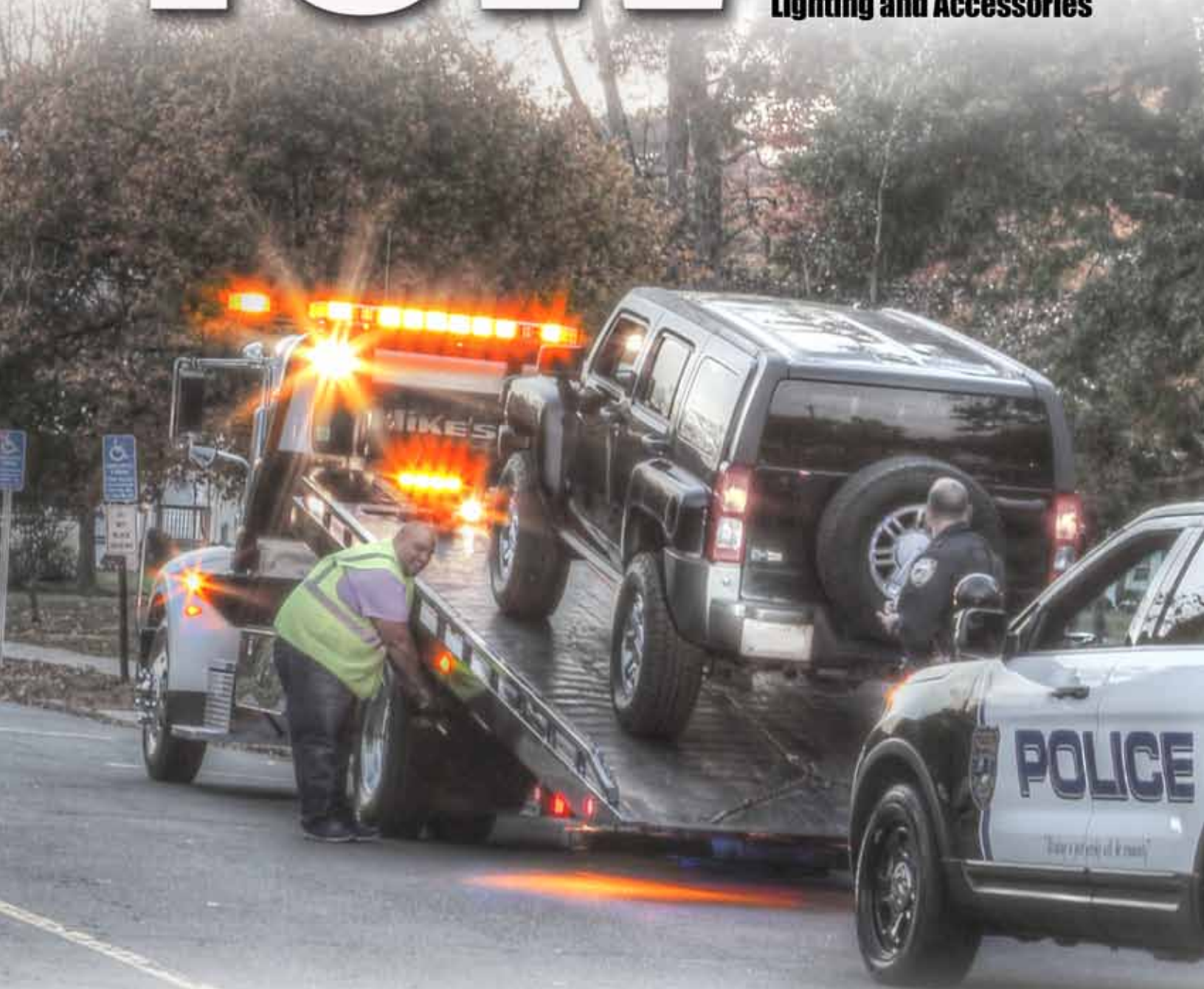


WHELEN®

Catalog AT-2014

TOW & RECOVERY

**Towman's™ Certified
Lighting and Accessories**



Officially Licensed
Warning Lights
of NASCAR®

Top performing Super-LED® Towman's™ lightbars provide high impact, rugged and reliable protection for your vehicle. They offer a wide range of options and are designed to let you specify the exact lightbar you need.



FLOTAAAA shown with optional FLETAA



Towman's Ultra Freedom™ Super-LED Competitor™ Series Lightbar

- 60" long, 4 corner, wide-angle Linear Super-LED modules, pre-wired with 15' cable.
- Add 400 Series single level TIR™ style Super-LED Amber lightheads in pairs to a total of 12.
- Front/rear warning lights separately controllable.
- Rivals strobe in intensity with only 30% of the amp draw.
- Includes rear facing LED brake/tail/turn signals & 2 halogen work lights.
- Three 3-1/2" (89mm) mounting studs on adjustable sliding brackets.

OPTIONS

- FLDSCBL** Driver side cable exit
FLETAA Two single level TIR style lightheads, factory installed, Amber
FLETKAA Two Single Level TIR style LED lighthead kits, customer installed, Amber
DELFLTBT Delete brake/tail/turn lights
DELFLTWL Delete two rear work lights



SLOTAAAA shown with optional SLETAA



Towman's Liberty™ Competitor Series Lightbar

- 60" long, 4 corner, wide-angle Linear Super-LED modules, pre-wired with 15' cable.
- Add 500 Series Linear Super-LED Amber lightheads in pairs to a total of 12 lightheads.
- Front/rear warning lights separately controllable.
- Rivals strobe in intensity with only 30% of the amp draw.
- Includes rear facing LED brake/tail/turn signals, 2 halogen work lights and 4 slide bolt mounting brackets.

OPTIONS

- SLEAA** Two Linear-LED lightheads, factory installed, Amber
SLTTALN6 Six lamp Linear-LED Traffic Advisor™ with TACTLD1 (requires deletion of work lights or brake/tail/turn lights)
SLETKAA Two Linear-LED lighthead kits, customer installed, Amber
DELSLEBT Delete brake/tail/turn lights
DELSLEWL Delete work lights



LIGHTBAR	MODEL NO.	TECHNOLOGY	LIGHTHEADS	LED FLASHER	AMPS WARNING LAMPS ONLY	VDC	NUMBER OF FLASH PATTERNS	BASE	
Ultra Freedom	FLOTAAAA	Linear Super-LED	4 (2 front/2 rear)	2	6.4 peak 2.5 avg	12	15 Scan-Lock™	extruded aluminum I-Beam	
Liberty	SLOTAAAA				4.4 peak 1.75 avg				
Justice®	JFOTAAAA	Linear Super-LED corner modules and CON3™ Super-LED inboard modules	4 (corners)	1	2.2 peak .88 avg		52 Scan-Lock	extruded aluminum platform with polycarbonate base	
	JFOBAAAA		10 (2 front/4 rear/ 4 corners)		3.7 peak 1.5 avg				
	JFODAAAA		4 (corners)		2.2 peak .88 avg				
Century™	CWOBAAAA	Linear-LED®	8 (2 front/2 rear/ 4 corners)		2.4 peak 1 avg			extruded aluminum base	



JFOBAAAA



Towman's Justice® Competitor Series

- Standard 62" Competitor Series with 4 corner modules, rear LED work lights and LED brake/tail/turn lights, pre-wired with 15' cable.
- Front, rear and all bar operation control.
- 52 Scan-Lock™ flash patterns, override feature and low power operation.
- Moisture resistant compression fit gasket.
- Model with built-in five CON3™ Traffic Advisor™, (no work lights).
- CON3 lightheads with removable optic spreading filters (optional on most models).
- Service oriented. Add modules, upgrade or service in the field.
- Remove four screws to access any section of the lightbar. Replace any lighthead by removing one screw and a single connector.
- Three 3-1/2" (89mm) mounting studs on adjustable sliding brackets.

OPTIONS

JDCA One Amber CON3 Super-LED lamp



CWOBAAAA

Towman's Century™ Series Lightbar

- Standard 60" long with 4 corner, two front & two rear LIN12™ lightheads, LED lightheads and LED brake/tail/turn lights and LED work lights, pre-wired with a 15' cable.
- Amber color.
- 4 corner modules plus 4 LED warning modules (2 rear, 2 front).
- Three 3-1/2" (89mm) mounting studs on adjustable sliding brackets.

OPTIONS

CDT6A One Amber TIR6™ inboard module

CEDLX* One LIN12 LED, Amber or White

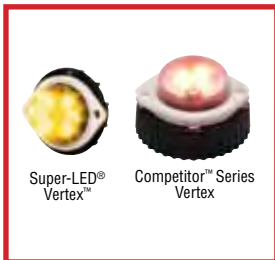
*Replace symbol in model number with offered LED color desired: A = Amber or C=White.



	CABLE	NUMBER OF SLIDE BOLT MOUNTS	LENS COLOR	TRAFFIC ADVISOR OPTIONS	SIZE	WARRANTY	CERTIFICATION
	15' passenger side	3	Clear outer lenses (optional color)	n/a	3-3/4" (95mm) H x 12" (304mm) D x 60" (154cm) L	5 year HDP® Heavy-Duty Professional	SAE Class 1 all models
		4		Linear-LED® with control head	2-1/2" (64mm) H x 12" (304mm) D x 60" (154cm) L		
		3		n/a	2-1/4" (57mm) H x 12" (304mm) D x 62-3/8" (158cm)L		
				standard with a five lamp CON3 Traffic Advisor			
		Clear lenses	n/a	2-1/4" (57mm) H x 7-3/4" (197mm) D x 60" (154cm) L			

Added warning protection designed for harsh environments, hazardous driving conditions and long hours of operation.

Hide-A-Way Lightheads



Guardian™ Mini Lightbars



Responder® HD Mini Lightbars



Responder LP Mini Lightbars



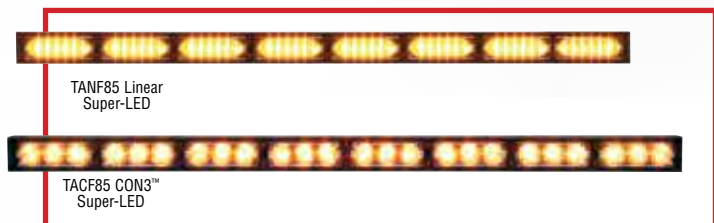
Mid-Level, Dash & Deck



Dominator™ Light Arrays & Traffic Advisors



Traffic Advisors™



Interior Lights



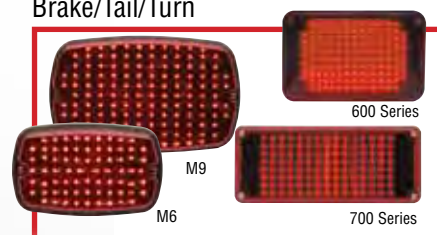
Mini Lightbars



Super-LED® Beacons



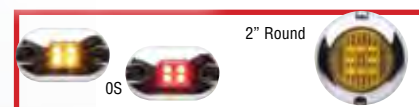
Brake/Tail/Turn



Back-Up Lights



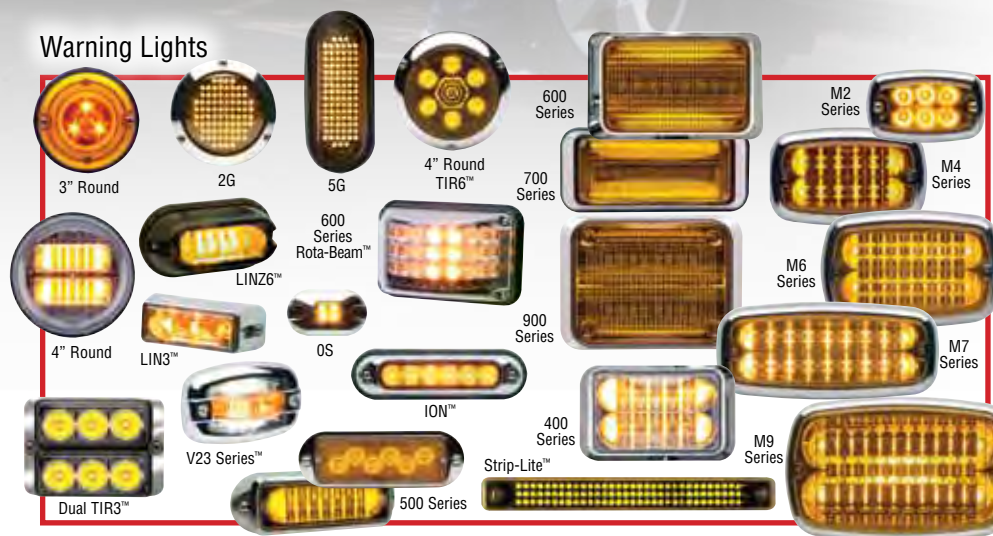
Marker/Clearance



Scenelights / Work lights/ Floodlights



Warning Lights



Reliable, versatile Whelen® warning lights will provide your towing vehicle with 360° of certified warning protection. Our goal is to keep you from having an accident... but, should you have an accident, we want to help keep you from being liable due to non-certified lighting! 5 year HDP® Heavy-Duty Professional warranty on all LED models.

BEACONS

NEW! R316 & R416 Series Rotating Beacons

Super-LED, SAE Class 1 Certified. Medium profile, polycarbonate outer dome, universal application. Solid-state, no moving parts, no motors. Coated electronics. Cruise light feature. Permanent mount models include 6 input pigtailed. Magnetic and magnetic/suction mount models includes 10' straight cord and cigar plug with LED indicator On/Off switch and pattern control switch. Synchronizable with up to eight other Whelen Synchronous products. Size R316: 4" (102mm) H x 7-3/16" (183mm) Dia. Size R416: 4-7/8" (123mm) H x 5-1/2" (140mm) Dia.



L31 Beacon

Super-LED, SAE Class 1 (Amber) and CA Title XIII certified. Permanent has multiple Scan-Lock™ flash patterns, includes 4 simulated rotating patterns, ability to alternately or simultaneously flash multiple patterns with up to 8 beacons, Hi/Low intensity, cruise lights, die-cast base, 12 VDC, available in 24 VDC. Size: 4" (102mm) H x 7-3/16" (182mm) Dia.



L32 Beacon

Same as L31, but with a low profile dome (not California certified). Size: 2-1/2" (64mm) H x 7-3/16" (182mm) Dia.



L41 Beacon

L41 beacons are certified SAE Class 1. 75 SignalAlert default and multiple flash patterns. Ultra High Intensity LED technology rivals strobe in intensity and draws far less power. Rated life exceeds strobe flash tubes by more than 50:1. Size: 4-3/4" (121mm) H x 5-1/2" (140mm) Dia.



L21 Beacon

Super-LED, SAE Class 1. Multiple Scan-Lock flash patterns, including steady-burn. Permanent mount models can be synchronized with up to 8 beacons. Virtually no EMI radiation. High or low dome. Polycarbonate or cast aluminum base. Combination permanent/pipe/J-hook mount, magnetic or magnetic/suction mounting. Size: 6-1/2" (165mm) H x 6-3/8" (161mm) Dia.



L22 Beacon

Super-LED, SAE Class 2, SmartLED® design, with multiple built-in Scan-Lock flash patterns including steady-burn, polycarbonate base, high or low dome. Available in permanent/pipe, magnetic/suction or magnetic mounting. Size: 6-1/2" (165mm) H x 6-3/8" (161mm) Dia.



L10 Beacon

Super-LED®, SAE Class 1 certified and meets SAE J845. High or low dome. 75 SignalAlert™ FPM. Multiple flash patterns including steady-burn. Polycarbonate base. Permanent, magnetic and magnetic suction mounts. 12 VDC, available in 24 VDC. Size: 6-13/16" (172mm) H x 6-7/16" (163mm) Dia.



L50 Series Beacons

Economical self-contained Super-LED, L51 Class 1, L53 Class 3, 75 SignalAlert FPM, polycarbonate base, low twist off dome. Permanent/pipe, magnetic or flat mount. Size: 3-3/4" (95mm) H x 5" (127mm) Dia.



DASH & DECK

Avenger™ Series

Self-contained single, dual or split module, Linear Super-LED. Multiple Scan-Lock flash patterns. Barely detectable until powered on. Standard swivel/bail bracket with three suction cups. Cigar lighter plug controls On/Off operation and Scan-Lock. Sizes: Single: 2" (50mm) H x 5-1/2" (140mm) D x 5" (127mm) L. Dual: 2" (50mm) H x 5-1/2" (140mm) D x 9-3/4" (248mm) L.



SpitFire™ ION™

Super-LED dash light. Multiple Scan-Lock flash patterns. Fully encapsulated electronics for moisture and vibration resistance. Polycarbonate integral hood with bail bracket and two suction cups for mounting. Eight foot straight cord cigar plug with On/Off selection and pattern control switch. 12 VDC. Size: 1-5/8" (41mm) H x 3-3/8" (86mm) D x 5-1/8" (130mm) W.



SlimLighter™

TIR6™ Super-LED meets Class 1. Low amp draw, Multiple Scan-Lock flash patterns. 10' straight cord with cigar plug. Includes pattern selection button and On/Off switch. Size: 2" (52mm) H x 1-3/16" (46mm) D x 16-3/8" (416mm) L.



WHELEN®

Slim-Miser™

5mm LED, high performance, low cost, dash mount with 3 windshield suction cups, 10' straight cord with cigar plug.
Size: 1-5/8" (41mm) H x 2-3/4" (70mm) D x 12-7/8" (326mm) L.



SpitFire Plus™

A compact, full-feature, Super-LED dash and deck light with brilliant light output in a small package.
Size: 1-5/8" (41mm) H x 3-3/8" (86mm) D x 5-1/8" (130mm) W.



MINI LIGHTBARS

Freedom™

Class 1 certified. 4 Corner Linear Super-LEDs, multiple Scan-Lock flash patterns, add up to 4 more inboard modules, halogen work lights or alley lights, Clear outer lenses.
Size: 3-3/4" (95mm) H x 12" (304mm) W x 28-1/4" (717mm) L.



Responder® HD

R10 Heavy-duty, Class 1 certified. Six dual level Super-LED modules. Multiple Scan-Lock flash patterns on permanent mount. ActionScan™ default pattern on magnetic mount. Rugged aluminum base.
Size: 5-1/8" (130mm) H x 6-5/16" (160mm) W x 17-1/4" (438mm) L.



Liberty™

Class 1 certified. 4 Corner Linear Super-LEDs, multiple Scan-Lock flash patterns on permanent mount, external control, add optional Super-LED work lights or alley lights, Clear outer lenses.
Size: 2-1/2" (64mm) H x 12" (304mm) W x 22" (558mm) L.



Justice®

Class 1 certified, low profile Linear-LED lightbar. Optional LED take-downs, alley lights and warning lights. Add up to 4 optional CON3™, LTR or LR11 lighthouse modules. Black polycarbonate base on an extruded aluminum platform. Clear outer lens with a moisture resistant compression fit gasket. Color lenses available. Size: 2-1/4" (57mm) H x 12" (304mm) W x 23" (584mm) L.



Responder LP

Class 1 certified Super-LED, multiple Scan-Lock flash patterns plus 4 simulated rotating patterns. Polycarbonate or rugged aluminum base. R1 has six CON3™ modules, R2 has six Linear-LED modules.
Sizes: 3-1/4" (83mm) (aluminum) or 2-7/8" (74mm) (polycarbonate) H x 6-1/4" (159mm) W x 17" (431mm) L.



Century™

Low profile design Amber outer lenses. SAE J845 Class I. Four corner Linear-LED® modules. Multiple Scan-Lock™ flash patterns and pattern override. Extruded aluminum platform.
Sizes: 11-1/2" (292mm), 16-9/16" (421mm) and 23-1/4" (591mm) L x 7-3/4" (197mm) W x 2-3/8" (61mm) H.



Guardian Strobe

G7 Series, two remote strobe heads with built-in power supply, CometFlash®, 40 watts, 480 FPM. 2 year warranty.
Size: 5-7/8" (150mm) H x 7" (178mm) D x 17-3/8" (440mm) L.



Guardian™ Halogen

G1 & G2 Series. 135 RPM rotators with 540 FPM or 175 RPM rotators with 700 FPM, high intensity H1 bulbs. 3 year warranty on halogen rotator.
Size: 5-7/8" (150mm) H x 7" (178mm) D x 17-3/8" (440mm) L.



Note: The use of a magnetic mounted beacon or lightbar on the roof of a vehicle in motion is not recommended and is at the sole discretion and risk of the user.

LIGHTHEADS

OS Series

Tiny oval encapsulated interior/exterior LED lighthead with Chrome-plated ABS housing. Available in steady-burn White illumination, Amber/Red marker/clearance, or warning. One flash pattern and built-in flasher, or steady-burn units that require external flasher. Size: 1" (25mm) H x 1/2" (13mm) D x 1-1/2" (38mm) W.



NEW! V23 Series™

Three-in-one combination light for 180° wide-angle warning, flood/alley and ground illumination. Class I SAE 845 certified. Includes surface mount flange in Chrome or Black. Optional pedestal mount and angled flange for mounting on a curved body panel of any vehicle. Warning has Scan-Lock flash patterns. Five year HDP warranty. Size: 2-11/16" (68mm) H x 1-1/2" (38mm) D x 4-1/4" (109mm) L.



Perimeter Enhancement Light

Downward projected ground lighting. Six diode Super-LED module in polycarbonate chrome or Black housing. Mounts to vertical surfaces and may be inverted. Molded rubber gasket protects body panels. 6" pigtail connector. 5 year HDP® warranty. Size: 1" (25mm) H x 1-3/8" (35mm) D x 11-1/2" (292mm) L.



Strip-Lite™

Compact surface mounted LED. Its unique rectangular shape. Multiple Scan-Lock flash patterns. Size: 1" (25mm) H x 1-3/8" (35mm) D x 11-1/2" (292mm) L.



NEW! ION™ V-Series™ (patent pending)

Combination 180° wide-angle warning, alley/flood and ground illuminating. Universal mounting bracket included. Optional bail/swivel bracket in Black or White, pedestal mount in Black or Chrome and rubber grommet. Surface mount includes flange, available in Black, White or Chrome. Multiple Scan-Lock flash patterns with 14 synchronizable patterns. Includes 10" 6-wire pigtail. Five year HDP warranty. Size Universal Mount: 1' (25mm) H x 4" (102mm) W x 2-1/8" (54mm) D. Size Surface Mount: 1-3/4" (43mm) H x 5-7/8" (150mm) W x 1-7/8" (48mm) D.



Surface Mount ION

Super-LED lighthead, includes Scan-Lock™ flash patterns and a 4-wire pigtail. Standard and wide-angle light spread models. Surface mount models include flange. Size: 1-3/4" (43mm) H x 5-7/8" (150mm) W x 1-1/8" (29mm) D.



ION Super-LED Universal Mount

Scan-Lock flash patterns and a 4-wire pigtail. Standard and wide-angle light spread models. Universal mount includes combination permanent/pedestal, clip, edge mounts, double sided tape. Choice of Black or White housings. Optional pedestal, bail bracket and grommet mounts. Lighthead only size: 1" (25mm) H x 4" (102mm) W x 1-5/16" (33mm) D.



TIR3™/LIN3™ Super-LED

Surface mount. Multiple Scan-Lock flash patterns and Black ABS flange. Includes different lenses that disperse light at different angles. TIR3 is directional, LIN3 disperses 180° light spread. Size: 1-1/8" (28mm) H x 3-1/2" (89mm) L x 1-1/4" (32mm) D with flange.



LINZ6™ Super-LED

Sub-compact, with wide angle light spread. Mounts virtually anywhere. Clear lens, Black flange standard, optional Chrome flange. Low current draw, fully encapsulated. Requires no external flasher. Split colors available. Multiple Scan-Lock flash patterns, including steady-burn, alternating and simultaneous patterns Synchronize up to eight lightheads. Size: 2" (50mm) H x 4" (102mm) W x 1-5/8" (40mm) D.



NEW! BRACKETS

Rear bed rail mount bracket, comes in a pair. Lighthead sold separately.

RBKT11

Optional for Ford F150.

RBKT12

Optional for Ford F-250/350/450/550.

RBKT13

Optional for Chevy Silverado.



2G Series (4" Round)

Vinyl grommet mount lighthead compatible with competitive 4" lights and their mounting accessories. Available in warning and compartment lighting. Optional Chrome or Black flanges available. Size: 5-1/2" (140mm) Dia. x 1-1/4" (31mm) D with grommet.



5G Series

Available in back-up and warning. These oval mount lights are compatible with 6" competitive lights and mounting accessories. They can be mounted horizontal or vertical and includes a vinyl mounting grommet. Optional Chrome flanges available. Size: 3-3/16" (81mm) H x 1-1/4" (31mm) D x 7-7/16" (189mm) W with grommet.



3" Round

3 Super-LED® diodes in an aluminum housing, steady-burn White illumination and flashing warning. Versatile 3" overall diameter, Surface mounted for ease of installation. Moisture and vibration resistant for reliable, long-life service. Optional Chrome flange and grommet mount available. Size: 3" (76mm) Dia.



4" Round, Flat Lens

Heavy-duty, round PAR-32 surface mount, wide-angle LEDs with spreader optic lenses fill the lighthead evenly with light, rivaling strobe in intensity but with all the advantages of LED. Size: 4-1/4" (108mm) Dia.



WHELEN®

4" Round, Extended Lens

Heavy-duty round lighthouse in surface mount with dual level LIN6™ modules. Multiple Scan-Lock™ flash patterns. Size: 4-1/4" (108mm) Dia.



400 Series

Linear Super-LED® lighthouse available with or without an internal flasher. Single level is surface mount and has SmartLED® design and multiple flash patterns with Phase 1 and Phase 2. Dual level requires a remote LED flasher and mounting option, purchased separately. Size: 3-3/16" (77mm) H x 5" (127mm) W.



500 Series

Linear Super-LED and TIR6™ lighthouses with multiple Scan-Lock flash patterns, includes steady-burn and synchronize wire. Horizontal and vertical mount models. Size: 1-5/8" (41mm) H x 5" (127mm) W.

Note: 400 and 500 Series models above require optional mountings.



NEW! 500 Series Super-LED V-Light™

3-in-1 combination lighting in one module, with 180° flashing color warning, white steady alley or flood light and white downward projecting ground illumination or puddle light. Size: 2-1/8" (54mm) H x 1-5/8" (42mm) D x 5-3/8" (137mm) L.



600 Series

Mid-sized, Linear Super-LED surface mount lighthouse. Size: 4-1/8" (105mm) H x 6-1/2" (165mm) W.



NEW! 600 Series Super-LED Rota-Beam

Surface mount, 180° light spread. 100% solid-state. "Rotating" light modules. No moving parts, no motors to wear out. 14 Scan-Lock™ flash patterns. Requires optional mounting purchased separately. Size: 4-3/16" (106mm) H x 3-7/16" (87mm) D x 6-9/16" (167mm) L.



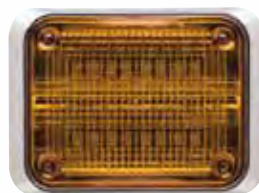
700 Series

Rectangular surface mount Linear Super-LED lighthouse. Size: 3-1/16" (78mm) H x 7-1/4" (184mm) W.



900 Series

Largest surface mount, dual level, Linear Super-LED lighthouse. Size: 7-1/8" (181mm) H x 9-1/8" (232mm) W.



Note: 600 thru 900 Series have models that are available in SmartLED design with an internal flasher or without an internal flasher. Flasher versions have multiple Scan-Lock flash patterns plus steady-burn and Hi/Low. Requires remote LED flasher, purchased separately.

WHELEN®

M Series

Surface mount warning lighthouses have a unique lens shape that's completely illuminated. Patented Linear-LED® designed reflector assembly. Multiple Scan-Lock flash patterns, many are California Title XIII compliant. Meets SAE specifications. Optional Black or Chrome flanges. Split colors available. Hard coating on lenses resists scratches, chemical and corrosive damage. Available in standard or wide-angle lenses.

M2 Series

Steady-burn models require remote flasher. Size: 2-1/2" (64mm) H x 4" (102mm) W x 1" (24mm) D.



M4 Series

Steady-burn models require remote flasher. Size: 3-3/8" (86mm) H x 5-1/2" (138mm) W x 1-3/8" (35mm) D.



M6 Series

Steady-burn models require remote flasher. Size: 4-5/16" (109mm) H x 6-3/4" (170mm) W x 1-3/8" (35mm) D.



M7 Series

Steady-burn models require remote flasher. Size: 3-3/8" (86mm) H x 7-5/8" (194mm) W x 1-3/8" (35mm) D.



M9 Series

Steady-burn models require remote flasher. Size: 6-1/2" (165mm) H x 10-3/8" (263mm) W x 1-3/8" (35mm) D.



M9 Super-LED Scenelight

Surface mount with Patent Pending optics. Draws 6 amps and produces 6500 lumens. Certified to meet KKK 1822F requirements. Size: 6-1/2" (165mm) H x 10-3/8" (263mm) W x 1-3/8" (35mm) D.



M6FCV2

Chrome flange, two light, vertical, lighthouses purchased separately.

M6FCV3

Chrome flange, three light, vertical, lighthouses purchased separately.

M6FCV4

Chrome flange, four light, vertical, lighthouses purchased separately.



INTERIOR LIGHTS

A wide range of interior lighting sizes and styles with advanced LED technology. Reliable, moisture & vibration resistant, LED lights will provide many hours of peak performance while using a fraction of the current draw required by out-dated lighting.



Fluorent™ & Fluorent Plus™ Super-LED® Tube Lighting

Designed for compartment lighting in increments of 9". Light tube rotates and locks in mounting brackets to direct light where it is needed. LEDs provide years of trouble free reliability and are moisture and vibration resistant. Size: 5/8" (16mm) H x 9" (228mm), 18" (457mm), 27" (686mm), 36" (914mm), 45" (1143mm), 54" (1371mm), 63" (1600mm) L.



SCENE/WORK/FLOOD LIGHTS

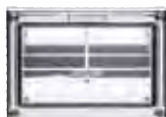
Pan & Tilt™ Series

360° remote control spotlight with wired or wireless controller. Wireless control provides quick and easy operation. Pans 210° left, 210° right, tilts 90° upwards and 20° downwards. Heavy-duty LEDs are rated for thousands of hours of use and provide 1475 lumens. Size: 8-3/4" (220mm) x 7-3/4" (196mm) Dia.



NEW! Pioneer Plus Surface Mount Series

Combination spot/flood (Patent Pending) optic design. Projects light at 5° producing illumination to the side of the vehicle arching upward to 90° pattern. Requires no body cut-out. Molded two part silicone grommet. They emit no EMI. Thermal design keeps LEDs running cool and efficiently. Solid-state electronics and LEDs eliminate the high cost of lamp or ballast replacement. Two-foot cable supplied. Instant On/Off. Extruded aluminum housing. Available in 12 VDC, 24 VDC. Optional flange in Chrome or Black. Five-year HDP® Heavy-Duty Professional warranty. Lighthead only Size: 6-3/8" (162mm) H x 1-3/4" (44mm) D x (Single) 9" (228mm), (Dual) 16-7/32" (412mm) L.



PCPSM1C



PCPSM2C

NEW! Pioneer Nano™ Series

Three and six diode models. Die-cast aluminum housing, powder coated Black or White. Solid-state electronics. Heavy-duty housing, electronics and mounting. 8° spotlight pattern, standard. Includes additional 40° x 20° floodlight lens. Optic lens changes via four screws. Rated to last thousands of hours. Powder coated stainless steel bail bracket with 3/8" stud carriage bolt mount. Five-year HDP warranty. Size 3 Diode: 3-1/2" (89mm) W x 1-7/8" (48mm) H x 1-3/4" (44mm) D. Size 6 Diode: 3-1/2" (89mm) W x 2-5/8" (67mm) H x 1-3/4" (44mm) D.



Pioneer Micro™ Series

Space limited? Here's legendary Pioneer performance in a micro Pioneer built to fit almost anywhere on your vehicle! Single panel Super-LED work/floodlights, includes bail bracket with 3/8" stud carriage bolt mount, standard. Available in White or Black. Size: 4-1/4" (108mm) H x 4-3/4" (121mm) W x 2-3/4" (70mm) D.



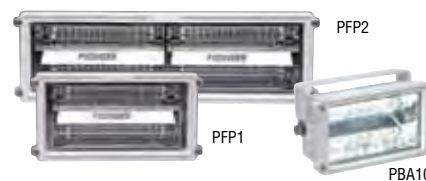
NEW! Pioneer SlimLine™ Series

Die-cast aluminum White or Black powder coated housing. Single unit comes standard with 8° lens. 40° horizontal x 20° vertical flood lens also supplied. Dual unit comes standard with two 8° lenses. Two additional lenses supplied for floodlight dispersion of 40° horizontal x 20° vertical or 8° spot/40° flood combination spot/flood. Available in 12 or 24 VDC. Multiple mounting options. Five-year HDP warranty. Size: 3" (76mm) H x 1-7/8" (48mm) D x (Single) 6-7/8" (164mm), (Dual) 12-1/2" (317mm) L.



Pioneer™ & Pioneer Plus™ Series

Single panel and dual panel Super-LED scene/work/floodlights/spotlights, requires optional mounting, purchased separately. Size: 3-11/16" (94mm) H x 3-7/16" D (87mm) x (Single) 7-3/8" (187mm), (Dual) 13-9/16" (344mm) L.



Poles, Folding Tripods & Ground Tripods

57" poles, 3 sizes of folding tripods and ground tripod options. Consult website www.whelen.com for more information.



WHELEN®

PAR-36 LIGHTS

NEW! PAR-36 Worklights with Switch

PAR-36 flood and spotlights include a stud/swivel with stainless steel bracket and hardware. 12/24 VDC combination spotlight/floodlight. Built-in On/Off switch. Black diecast housing.



PAR-36

PAR-36 Super-LED work lights are rated to last thousands of hours and provide remarkably bright light. Available in either spot or flood beam pattern, and in pedestal or stud/swivel mount these versatile work lights feature stainless steel mounting hardware.



NEW! PAR-36 & PAR-46 Rubber Housing

PAR-36 & PAR-46 rubber swivel flood/spotlights both include a rubber stud/swivel housing with stainless steel bracket and hardware. PAR-36 is a 12/24 VDC combination spot/floodlight. PAR-46 is a 12 VDC spotlight.



P46SLCHG P36SLCHG

PAR-36 & PAR-46 Replacement

PAR-36 spot/flood & PAR-46 2° spotlights Super-LED lights are a drop-in replacement for outdated Halogen lamps. PAR-46 Super-LED Spotlights are designed especially for the Unity® Spotlight. Lightweight, low current and water resistant.



P46SLC P36SLC

PAR-36 & PAR-46 Hand held Spotlights

Hand held spotlights. PAR-36 combination spot/flood, with 12/24 dual voltage. PAR-46 2° spotlight is 12 VDC. Includes 90# pull magnet mount, 8' coiled cord and cigar plug. Waterproof durable push-button On/Off switch.



P46HHS

P36HHS

LIGHT ARRAYS

Dominator™ & Dominator Plus™



TIR3™ or LINZ6™ Super-LED® modules for warning and Traffic Advisor™. Interior or exterior use. Available in two, four, six or eight light flashing array or as a six or eight light Traffic Advisor. Rugged aluminum housing, fully encapsulated, fully waterproof. Slide bolt mount. Scan-Lock™ flash patterns. Requires customer supplied switches.

TRAFFIC ADVISORS

All have front loading lightheads for easy access in the field, adjustable slide bolt mounting, heavy-duty extruded aluminum housing with Black finish, control head with programmable flash patterns and 25' of cable (custom cable lengths available).

TANF85

8 Linear Super-LED modules.



TACF85

8 CON3™ Super-LED modules.



HEADLIGHT SYSTEMS

Vertex™ Hide-A-Way

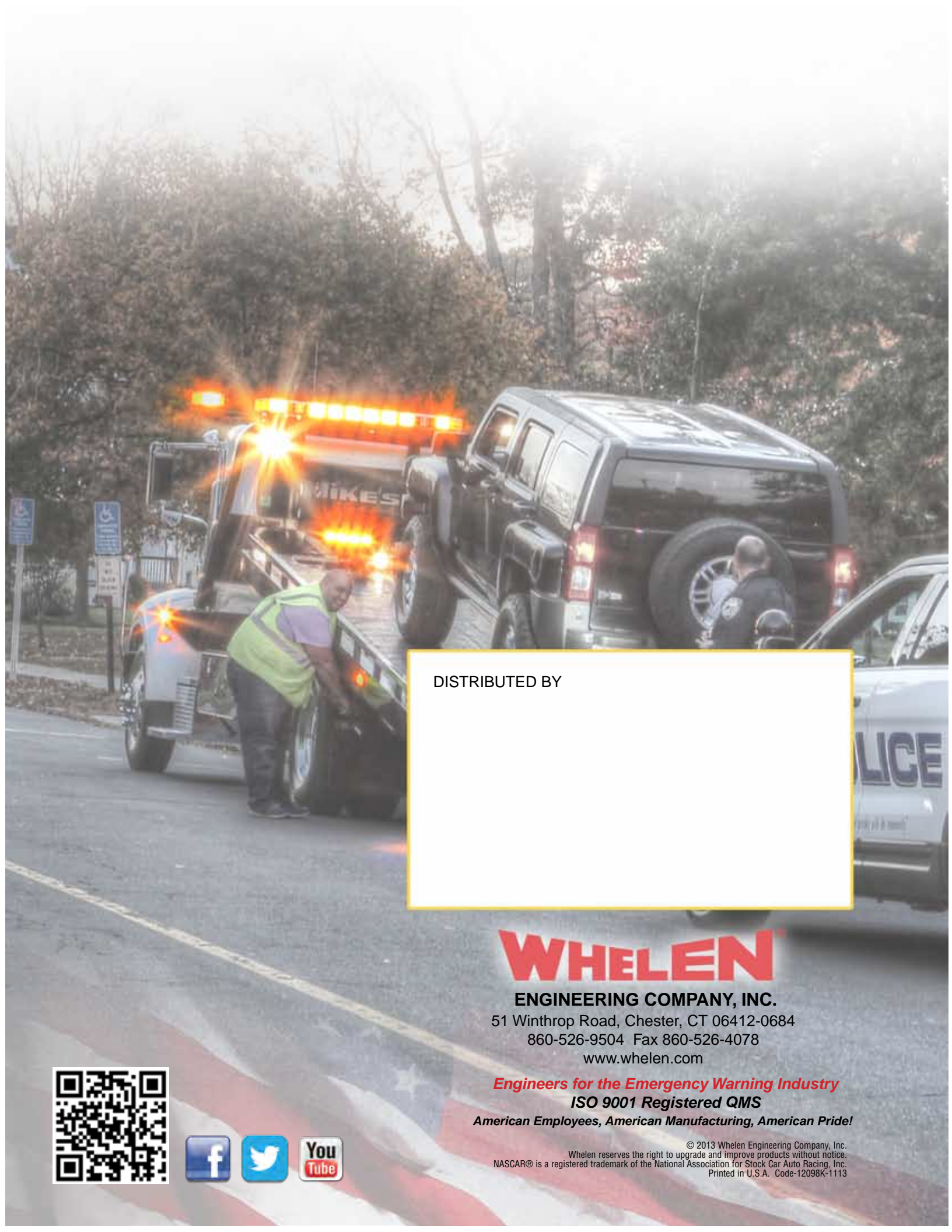
Vertex Super-LED 2 lamp system, with 2 single 1-1/2" diameter self-contained lightheads with multiple Scan-Lock flash patterns and steady-burn with 9' cable. Mounts in 1" hole. Backwardly compatible to standard 1" Hide-A-Way style lights. Flanges available in Black or Chrome. Split color available.



Vertex Competitor™ Series

Tiny, Super-LED, self-contained lighthead with electronics built into base. A cost effective Hide-A-Way style lighthead requiring only a 1" hole in any composite lighthead, cornering or taillight assembly or surface mounted to exterior surfaces anywhere on your vehicle. Scan-Lock flash patterns, and 6" wire pigtail, standard.





DISTRIBUTED BY

WHELEN

ENGINEERING COMPANY, INC.

51 Winthrop Road, Chester, CT 06412-0684

860-526-9504 Fax 860-526-4078

www.whelen.com

Engineers for the Emergency Warning Industry

ISO 9001 Registered QMS

American Employees, American Manufacturing, American Pride!



© 2013 Whelen Engineering Company, Inc.
Whelen reserves the right to upgrade and improve products without notice.
NASCAR® is a registered trademark of the National Association for Stock Car Auto Racing, Inc.
Printed in U.S.A. Code-12098K-1113