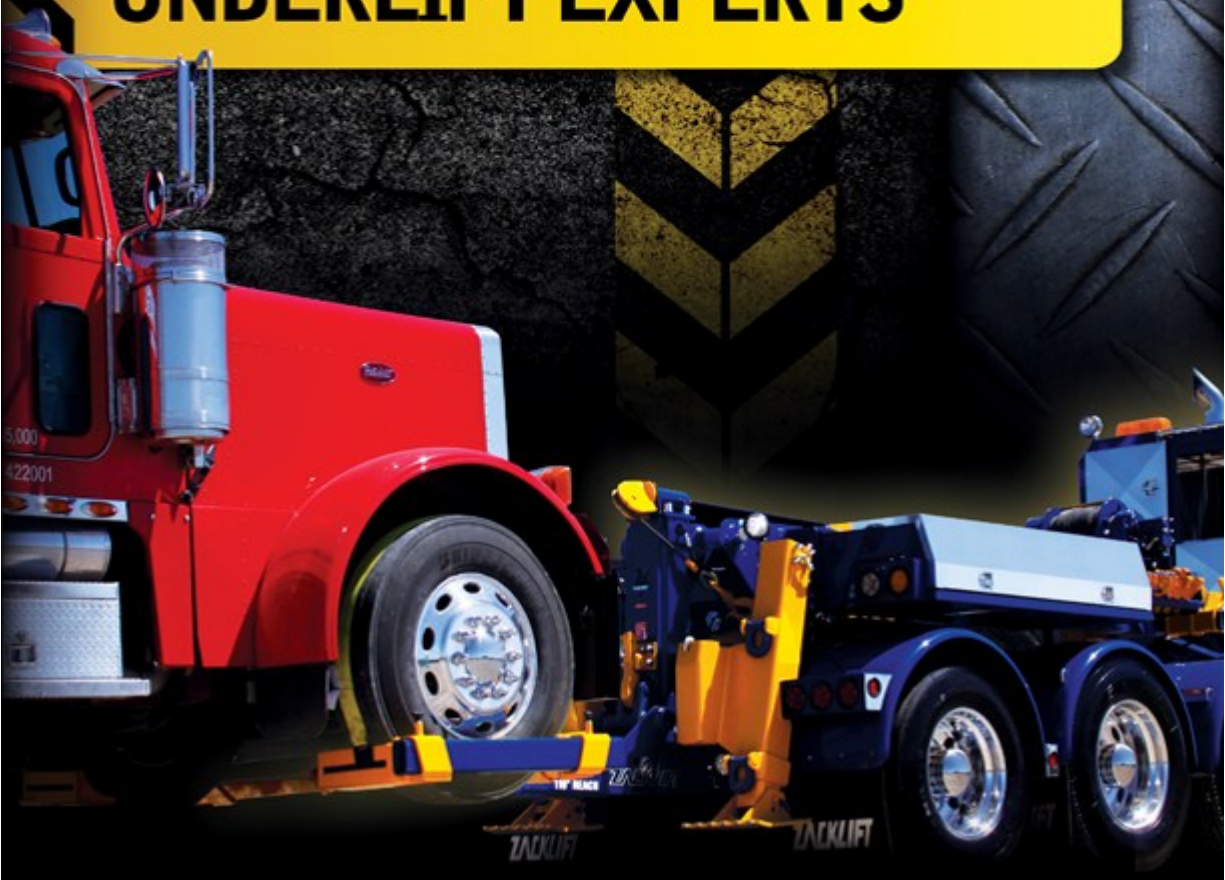




REMOVABLE & PERMANENT ADD-ON UNDERLIFT EXPERTS



Proven

Zacklift™ has been chosen as the strongest, most valuable towing tool available, by the trucking fleets that keep America moving, and by the quality US truck manufacturers for use in the factories of Freightliner, Sterling and Navistar. Zacklift has earned the privilege of supplying equipment throughout the Middle East including Afghanistan. And it has beaten the challenge in the toughest proving grounds in the world, from Australia to Africa, and U.S. city governments, hauling fire trucks and garbage packers.



Scaling

No equipment of its kind will scale as well as Zacklift. The patented over-frame location of the Zacklift in both the FIFTHWHEELER™ and the Permanent mounting provides the greatest ability to carry payload successfully through the scales. Every inch the fork contact point is moved forward means revenue and safety. Focusing on a tight position to the rear axle during nearly 30 years of retrofit underreach experience has put Zacklift's engineering in the #1 position at the scales.



Calculate any truck's carrying capacity and learn more about scaling at www.zacklift.com

Removable

FIFTHWHEELER™

The FIFTHWHEELER transports everything a heavy duty tow truck can, at a fraction of the price. The damage-free towing package arrives Road-Ready for immediate use and has been engineered with Zacklift's trademark ruggedness to stand up to the demands of tower's day-in and day-out use and still outlast the truck. The FIFTHWHEELER drops into place on any tractor with no modifications and no welding. Move the FIFTHWHEELER from truck to truck if required and remove it with a drive off procedure just like a tractor. All semi trailer plugs are provided. Absolutely every possible hydraulic connection, mechanical assembly, and electrical connection has been factory completed and tested.



Visit www.zacklift.com for complete specifications on the only FIFTHWHEELER with optional Stifflegs, Winch and Custom Tool Boxes. View owner photos and mounting instructions.

Permanent

PERMANENT

When removing the Zacklift is not necessary, a Permanent mounting is the choice. Every element of the Permanent mounting has been carefully pre-engineered at the Zacklift factory. Self-installation is a common option, with excellent outcome every time. Any chassis make model or year, any bare frame or conventional wrecker can be transformed into a state-of-the-art transporter. Focused on one thing, retrofitting the world's best Underlift, Zacklift is the only choice for Permanently mounted transport equipment.



Visit www.zacklift.com for complete mounting instructions and owner photos.

Rating & Reach

- Every Zacklift Underlift rating is available in either the removable FIFTHWHEELER or the Permanent mounting style.

| | Z18 | Z30 | Z303 | Z402 | Z403 |
|--------------------------------------|-------------|-------------|-------------|-------------|-------------|
| Retracted lift rating | 18,000 | 32,000 | 32,000 | 40,000 | 40,000 |
| Extended lift rating | 13,000 | 18,000 | 13,000 | 26,000 | 18,000 |
| Tow rating | 85,000 | 85,000 | 85,000 | 100,000 | 100,000 |
| Retracted distance | 49" | 56" | 60" | 58" | 67" |
| Reach | 86" | 100" | 119" | 103" | 135" |
| Reach with 12" Reach Extensions | 98" | 112" | 131" | 115" | 147" |
| App. reach, center of axles to forks | 141" | 155" | 174" | 158" | 190" |
| Dist. from tailboard when stored | 10" | 11" | 11" | 12" | 12" |
| Upward tilt, max lifting height | 22 deg. 62" | 22 deg. 65" | 22 deg. 71" | 22 deg. 68" | 22 deg. 80" |
| Tilt below ground | 8 deg. 11" | 8 deg. 13" | 8 deg. 15" | 8 deg. 14" | 8 deg. 21" |
| Tilt cylinder down stroke | 17" | 17" | 17" | 17" | 17" |
| Weight Permanent Mount | 1507 | 1688 | 1861 | 2678 | 3214 |
| Weight Fifthwheeler | 2402 | 2583 | 2756 | 3578 | 4109 |



Zacklift International, Inc.

1102 E 1st Street, Cle Elum, WA 98922

509 674 4426

509 674 5267 fax

www.zacklift.com

See Zacklift's full range of
Stifflegs including the only
FIFTHWHEELER Legs at
www.zacklift.com



See the Wheel Lift with the
industry's best range, from SUV's
to dump trucks, along with the full
line of indispensable Zacklift
accessories at www.zacklift.com

ZLTM
ZACKLIFT

MEDIUM-DUTY ZACKLIFT MH10,000 & Z6500



Zacklift International Inc.
1102 E 1st Street
Cle Elum, WA 98922 U.S.A.
Phone: 509-674-4426
Fax: 509-674-5267

E-Mail: email@zacklift.com
Web Site: www.zacklift.com



Zacklift does one thing and they do it well. No one else in the towing industry has more experience in add-on underlifts than the people at Zacklift.

Zacklift medium duty wheel lifts feature Zacklift's lift and tilt mechanism. Three separately functioning cylinders provide the unique ability to use the up and down function to lower the extension arm flat on the ground.

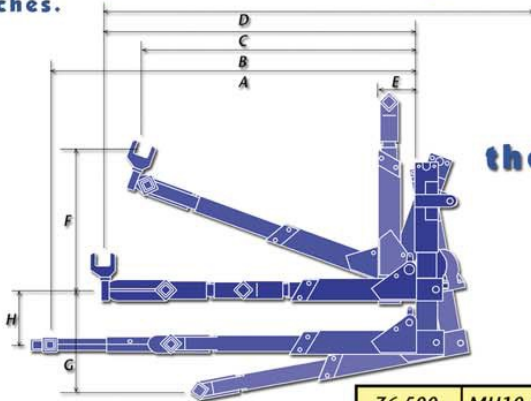
Then, Zacklift's superbly engineered tilt range of 25° can be adjusted to come up at an angle, clearing low hanging valance and chrome trim, more than you will ever need for routine towing. A direct up lift, or a lift with limited tilt angle would damage costly bumpers. Independent lift and tilt functions and the sharp up-tilt allow hook-up in one operation.

The powerful extend cylinder of the MH10,000 and Z6500 lifts will effortlessly bring in a load to position it for towing. Wear pads made of nylatron, a high density teflon, provide the smooth, long wearing surfaces all Zacklift tubes slide on.

Zacklift's compact upright storage position brings the frame lift to within 8 inches of the tailboard when retracted and does not interfere with winching, boom operation or driver maneuverability around the tailboard.

Frame Forks are standard equipment on the MH10,000. The highly adaptable MOTORHOME FORKS will turn the versatile wheel lift into a frame and axle lift. A second grid crossbar, 43 inches long, is included for slipping between duals. Motorhome forks are an option on the Z6500.

Zacklift features Timken roller bearings in the critical pivot hub to assure ease of movement and exceptionally long life. This bearing far outlives the bushing found in other under reaches.



| | Z6,500 | MH10,000 |
|--|------------|------------|
| Retracted Lift rating | 6,500 lbs | 10,000 lbs |
| Mid Extension Lift rating (from axle) | 5,750 lbs | 8,500 lbs |
| Extended Lift rating | 5,000 lbs | 7,000 lbs |
| Tow rating | 40,000 lbs | 40,000 lbs |
| Weight of unit | 800 lbs | 900 lbs |
| A. Reach to Wheel lift | 76" | 86" |
| B. Reach to Frame Forks | 64" | 74" |
| C. Reach to Bus Extension | 74" | 84" |
| D. Reach to axle from Bus Extension | 108" | 118" |
| E. Distance from tailboard when stored | 8" | 8" |
| F. Upward til, maximum lifting height | 20° 50" | 20° 60" |
| G. Downward tilt below ground | 5° 7" | 5° 8" |
| H. Down Stroke on lift cylinder | 13" | 13" |

**Tilt,
tilt and
more tilt**

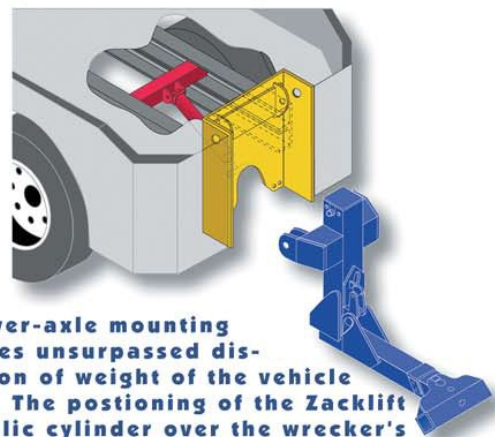
Lift

Extend

Fold



Expertly engineered mounting for the industry's best weight distribution..



This over-axle mounting provides unsurpassed distribution of weight of the vehicle in tow. The positioning of the Zacklift hydraulic cylinder over the wrecker's rear axle allows for the lifting of significantly more than poorly engineered units mounting on the tailboard. Your Zacklift is easily installed in your own shop. You'll receive step by step installation instructions. Dealer or factory installation is also readily available.

STANDARD EQUIPMENT

Height x Width



FORKS All forks are high tensile steel.

Chain Fork pair Slotted for 3/8" chain, provide a Tow-Bar like hook-up.

1 x 2.5 Fork pair **General low profile front axle fork.** This specially engineered fork provides a snug fit around axle.

Torsion Bar Fork pair Rounded for secure fit on torsion bars and front axles. Eliminates load shift.

6 x 6.5 Fork pair Curved engineering allows for solid, no-slip positioning of frames, axles and cross members.

9 x 4 Forks pair Tall, wide surfaced fork for frames, cross members and axles or for turning sideways on front springs.



12" Reach Extenders increase the reach with any fork and move a large rear differential away from the underlift's crossbar.

1 receiver, 3 settings

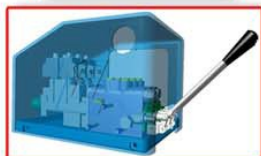
Fork receivers, along with cross bar, feature Zacklift's trademark 'diamond' design, engineered for maximum strength. Fork receivers can be positioned on either side of the cross bar and at two height settings.



Zacklift's hydraulic components have been carefully selected for the highest quality and most trouble-free, long-life service possible. The U.S. manufactured **sectional valve** features electric over hydraulic operation, not lower quality air operation. Additional sections may be conveniently added.

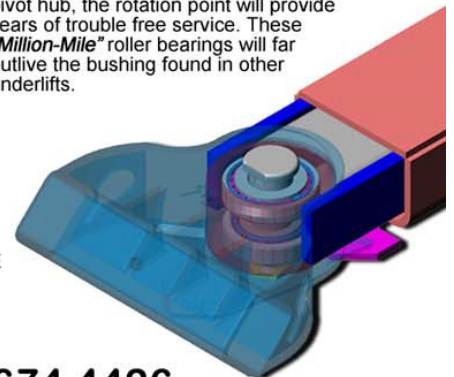


The valve includes both levers and a **15' corded remote control**. The additional lever operation assures no down time if a remote control is ever left behind. A wireless remote control is always an option with either system.



If self contained power is required, Zacklift offers a **NO-CHARGE OPTION** of a 12 Volt Electro-Hydraulic Power System 15' corded remote also included. Both choices also include a custom, roto molded cover.

The exceptionally low profile of the Zacklift allows for more single picks under low bumpers and airfoiles. Engineered with **Timken Roller Bearings** in the critical pivot hub, the rotation point will provide years of trouble free service. These **"Million-Mile"** roller bearings will far outlive the bushing found in other underlifts.



WWW.ZACKLIFT.COM 509 674 4426



Steertek Forks
Made for the Hendrickson Steertek™ composite axles. 8-1/4" wide x 3" deep.

Cable Guide
Accommodates up to 3/4" cable. Cable guide can be used in conjunction with any deck winch. The guide mounts on top of the main vertical section of any Zacklift.



2 x 4 front axle fork.
These specially engineered fork provides safety by snugly fitting around axle.



Locking Spring Forks
Cast from high strength steel, these rugged forks pin over the spring shackle for an alternate hook-up location. The fully pivoting load point allows for non-binding transporting.



Chain Attachment Blocks
Avoid chain shift. Attach safety chains to double hook Chain Blocks.



Trailer/5th Wheel Hitch
This multi-function accessory comes complete with a 2-5/16" ball and 20,000 lb pintle for trailer towing. No tools required to use on a 5th wheel plate or goose-neck 5th wheel travel trailer.

5" Height Extenders
Drop in any fork for reaching a difficult-to-reach location, or for gaining extra height.



Scoop-n-Go
Fork & fork receiver all in one, the Scoop-n-Go provides the lowest profile available with a 6" overall height.



Heavy Duty Wheel Lift
The industry's only wheel lift that can handle dump trucks to mid size SUVs. No bars to change, no ratchets to connect. Straps remain connected to strap-winch for ultra convenient winding. Wheel trays provide secure support for tires from 15 to 24.5. Wheel lifting assembly can remain in place during storage for simple re-use. Powder coated paint for long life and quality appearance.



Deluxe Accessories Package

Includes Heavy Duty Wheel Lift, Trailer/Fifth Wheel Hitch, Locking Spring Forks, 5" Height Extenders, Scoop-n-Go Forks, and Steertek Forks.