

# CENTURY®

---

---

LEGENDARY LEADERSHIP

*Heavy-Duty Integrated*



Aluminum Tubular Pylon and other Popular Body Options Shown

Century provides the superior performance and advanced technology that professional towers have grown to rely on for over 30 years in its complete line of heavy-duty towing and recovery units. The significant weight-forward design, along with the use of weight-saving fabricated components, allows for increased payload without sacrificing strength or capacity. Features such as diagonally opposed jacks that provide maximum stability and multi-position feet for better footing on a variety of surfaces are just two of the many features that make Century the number one choice of professional towers worldwide for their complete equipment needs.

---

SETTING THE STANDARD IN  
HEAVY-DUTY TOWING & RECOVERY





**4024**

*The 4024/T2 with over 102" of reach on the underlift is ideally suited to handle a wide variety of vehicles such as motor homes, delivery vans, and city tractors. This single axle unit with a 20-ton recovery boom and 20,000 lb. winches creates an incredible value with features only found on larger units.*



**5130**

*The 5130 is Century's Largest single axle integrated towing and recovery unit with 113" of underlift reach. The 5130 has the ability to tow most vehicles without giving up maneuverability of a single axle unit. The 5130 also provides a 25-Ton recovery boom and 25,000 lb. winches for your recovery and lifting applications.*



**5230**

*The 5230 is designed to be the ideal unit for towing when scale weight is an issue. The 5230 provides 113" of underlift reach to easily handle most vehicles and is standard with Century's weight-saving aluminum body. A 30-ton recovery boom and 25,000 lb. winches completes this popular package.*



**7035**

*The 7035 is Century's most popular heavy-duty unit. The underlift provides 129" of reach and is designed to scale in most situations. The 35-Ton recovery boom and dual 35,000 lb. winches allows the 7035 to tackle the toughest lifting and recovery jobs, making it extremely versatile for heavy-duty towing and recovery.*



**9055**

*The 9055 is Century's largest capacity integrated towing and recovery unit. With a 50-ton recovery boom, with an optional third stage, and dual 50,000 lb. winches, the 9055 is ideal for heavy recovery work along with the ability to tow a wide variety of vehicles from mixers and packers through buses with its 136" of underlift reach.*

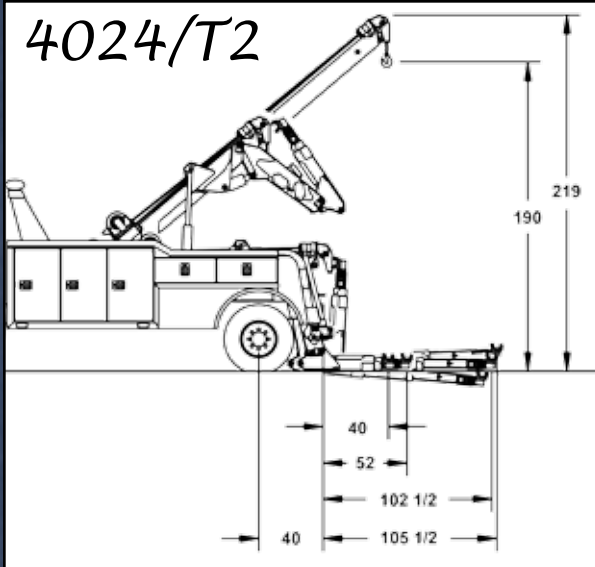


**SP 850-XP**

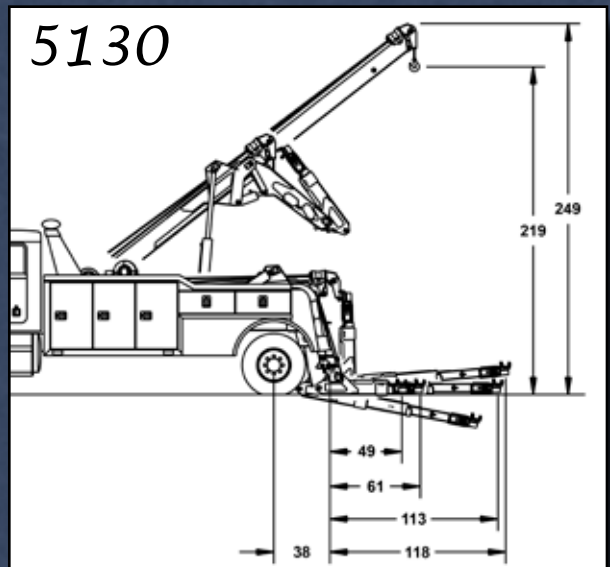
*The SP 850-XP, available on the 7035 and 9055, combines the finest European technology with North America's most popular heavy-duty units. The hydraulic pivoting stiff legs and additional 35,000 lb. winches allow the operator much more power and flexibility in tough recovery situations including side pulls without shutting down roadways.*



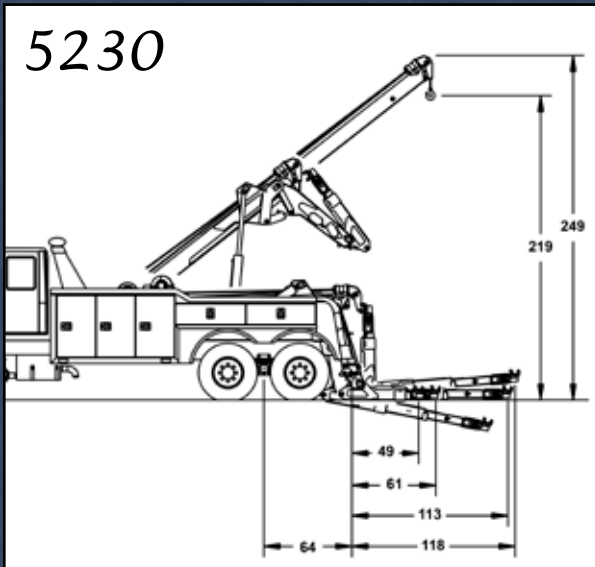
4024/T2



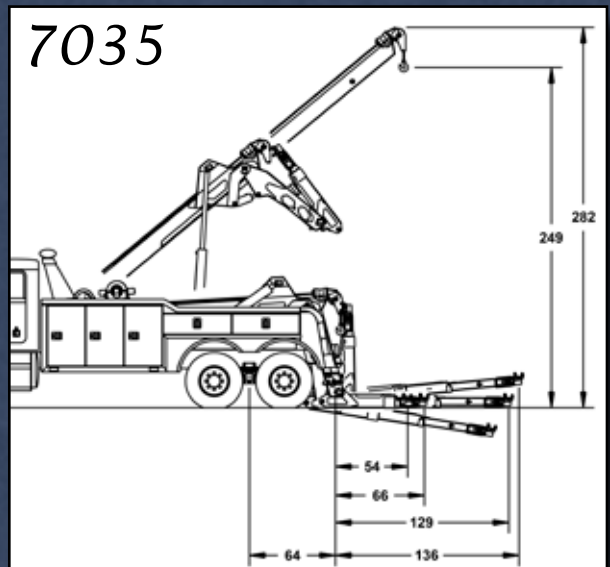
5130



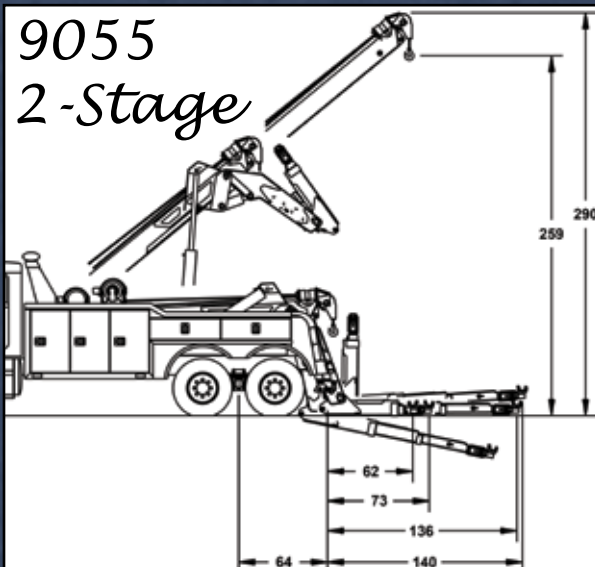
5230



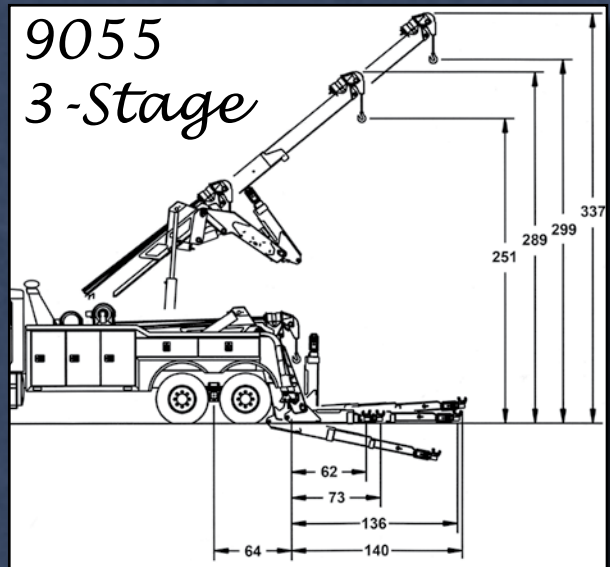
7035



9055  
2-Stage



9055  
3-Stage







# SETTING THE STANDARD IN HEAVY DUTY

The newly designed aluminum body provides spacious, modular tool compartments with features that include adjustable shelves, rear tail light compartments, along with chain racks and fork holders. Other popular options include a 7-drawer tool box, folding sink, and fold-down storage brackets for the heavy-duty tire lift.



The standard three piece light pylon can be outfitted with the optional lower wings and additional strobe emergency lights.



| Model     | Standard Body Configuration | Optional Body Configurations |           |
|-----------|-----------------------------|------------------------------|-----------|
| 4024/T2   | 138" C.A.                   | 156" C.A.                    |           |
| 5130      | 156" C.A.                   | 182" C.A.                    |           |
| 5230      | 156" C.B.                   | 180" C.B.                    |           |
| 7035      | 156" C.B.                   | 180" C.B.                    | 204" C.B. |
| 9055      | 156" C.B.                   | 180" C.B.                    | 204" C.B. |
| SP 850-XP | 204" C.B.                   |                              |           |

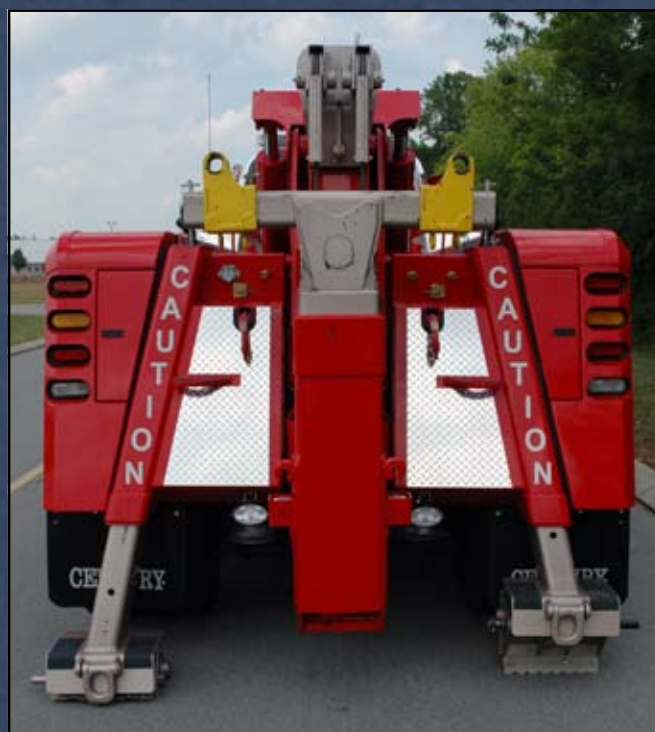
An optional 24" Crossover Tunnel is available on a 4024/T2 with a 156" C.A., 5130 with a 182" C.A., or a 5230, 7035, or 9055 with a 180" C.B. or 204" C.B.

Other body C.A. and C.B.'s are available with an optional 24", 30", 36", or 48" saddle tunnel box.

The 180" and 204" C.B. bodies are available in an optional Tri-Axle configuration.

Maximum frame height for the 4024/T2 is 40" and 42" for the 5130 through 9055. Contact the factory for information on taller frame heights.

Diagonally-opposed rear jacks provide a wider stance for better stability. The multi-position feet provide you with your choice of a flat pad or a spade with a replaceable grater blade. Optional D-rings are also available on the jack feet.



Standard equipment includes lanyard remote control, along with a wide variety of lifting attachments. The 7035 & 9055 also include a wireless remote as standard equipment.



# NAVY-DUTY TOWING & RECOVERY



The rear taillight compartments on the aluminum body provide quick access to a pair of lifting forks and safety chains, along with the optional tailboard underlift controls.

Manual controls, winch air-free spools, and 2-speed winch switches are standard on drivers & passenger side control stations. The rear switch panel is standard on the 7035 & 9055 and is available with the Power Touch System on the 4024, 5130, and 5230. The Engine Data Information Center is available as an option to monitor vital engine readings.



For difficult-to-tow vehicles, the

2nd and 3rd stages of the underlift are fabricated of high-tensile steel to provide additional reach while maintaining a low profile without sacrificing strength. The optional Low Rider underlift for the 9055 gives you an extended reach of 160" without sacrificing the low profile of the underlift.



Left: The optional 7-drawer toolbox is ideal for storing your hand tools and small parts, a 3-drawer toolbox is available for tri-axle bodies.

Right: The optional bus lift storage bracket allows you to fold down the attachment for easier loading & unloading.

Far Right: The optional folding sink is ideal for washing up after a tough recovery.



CENTURY®



## WINCH SPECIFICATIONS

| Model     | Winch Capacity  | Winch Type        | Cable Specifications        |
|-----------|-----------------|-------------------|-----------------------------|
| 4024/T2   | (2) 20,000 lbs. | Planetary         | 9/16" x 175' 6x19 Fiber IPS |
| 5130      | (2) 25,000 lbs. | Planetary 2-Speed | 5/8" x 200' 6x37 I.W.R.C.   |
| 5230      | (2) 25,000 lbs. | Planetary 2-Speed | 5/8" x 200' 6x37 I.W.R.C.   |
| 7035      | (2) 35,000 lbs. | Planetary 2-Speed | 3/4" x 200' 6x37 I.W.R.C.   |
| 9055      | (2) 50,000 lbs. | Planetary 2-Speed | 3/4" x 250' 6x37 I.W.R.C.   |
| SP 850-XP | (2) 50,000 lbs. | Planetary 2-Speed | 5/8" x 250' 6x37 I.W.R.C.   |

## BOOM SPECIFICATIONS

| Model        | Boom Structural Rating (S.A.E.)<br>Retracted 30° | Extended 30° | Maximum Angle | Maximum Hook Height (inches) | Reach Past Tailboard at 30° Boom Angle (inches) | *Estimated Shipping Weight (lbs.) |
|--------------|--|--------------|---------------|------------------------------|---|-----------------------------------|
| 4024/T2      | 40,000 lbs.                                      | 15,000 lbs.  | 40°           | 190"                         | 86"   | 8,875                             |
| 5130         | 50,000 lbs.                                      | 16,000 lbs.  | 39°           | 219"                         | 112"  | 12,200                            |
| 5230         | 60,000 lbs.                                      | 16,000 lbs.  | 39°           | 219"                         | 112"  | 12,060                            |
| 7035         | 70,000 lbs.                                      | 22,000 lbs.  | 40°           | 249"                         | 125"  | 14,220                            |
| 9055         | 100,000 lbs.                                     | 30,000 lbs.  | 39°           | 259"                         | 127"  | 17,650                            |
| 9055 3-Stage | 100,000 lbs.                                     | 18,000 lbs.  | 39°           | 299"                         | 199"  | 18,450                            |

\*Estimated shipping weight includes standard body and wrecker. Allow additional weight for added equipment, accessories or optional body lengths.

All ratings are based on structural factors only, not vehicle capacities or capabilities. Specifications shown are approximations and may vary depending on chassis selected. Miller Industries Towing Equipment Inc. reserves the right to change or modify product and or specifications without notice or obligation. Some equipment shown is optional.

## UNDERLIFT SPECIFICATIONS

| Model     | Capacity Fully Extended to C.L. of Forks | Capacity Fully Retracted to C.L. of Forks | Underlift Tilt |
|-----------|--|---|----------------|
| 4024/T2   | 12,000 lbs. @ 102.5"                     | 24,000 lbs. @ 40"                         | 8° +           |
| 5130      | 16,000 lbs. @ 113"                       | 35,000 lbs. @ 49"                         | 10° +/-        |
| 5230      | 16,000 lbs. @ 113"                       | 35,000 lbs. @ 49"                         | 10° +/-        |
| 7035      | 16,000 lbs. @ 129"                       | 35,000 lbs. @ 54"                         | 10° +/-        |
| 9055      | 17,000 lbs. @ 136"                       | 55,000 lbs. @ 62"                         | 10° +<br>7° -  |
| Low Rider | 18,000 lbs. @ 160"                       | 55,000 lbs. @                             | 10° +<br>7° -  |

## RECOMMENDED MINIMUM CHASSIS SPECIFICATIONS

| Model          | Front Axle (lbs.) | Rear Axle (lbs.) | Clear C.A. / C.B. | After Frame from Center of Rear Axle | R.B.M. (in./lbs.) |
|----------------|-------------------|------------------|-------------------|--------------------------------------|-------------------|
| 4024/T2        | 10,000            | 21,000           | 138"              | 42"                                  | 1,200,000         |
| 5130           | 12,000            | 21,000           | 156"              | 40"                                  | 1,650,000         |
| 5230           | 13,200            | 40,000           | 156"              | 40"                                  | 2,250,000         |
| 7035           | 13,200            | 40,000           | 156"              | 40"                                  | 2,250,000         |
| 7035 SP 850-XP | 14,600            | 40,000           | 204"              | 40"                                  | 3,000,000         |
| 9055           | 14,600            | 40,000           | 156"              | 40"                                  | 3,000,000         |
| 9055 SP 850-XP | 20,000            | 40,000           | 204"              | 40"                                  | 3,000,000         |

\*All Recommendations are minimums. Heavier specifications may be required depending on chassis and equipment weight. Always consult your local distributor or the factory for additional information.

The outside frame rails of chassis extending behind the cab must be free of fuel tanks, air tanks, battery boxes, etc.

## STANDARD BODY FEATURES

- Aluminum Modular Body
- 96" Wide
- Dual Control Stations
- Hydraulic Pressure Gauges (Drivers Side)
- Tailboard Recovery Anchors
- Tailboard Fork & Chain Storage
- Safety Chains in Rear Pockets
- 3 Large Forward Compartments
- Compartment Over the Wheel Well
- Double Panel Doors
- Door Checks
- Federal Standard #108 Lighting
- LED Taillights
- Flexible Wire Loom
- LED Toolbox Lights
- Rubber Fenderettes
- Mud Flaps
- Side Worklights
- Chain Rack
- Fork Holders
- Recessed Air & Electrical Hook-Ups
- Adjustable Shelves
- Rubber Isolators
- Enclosed Inner Wheel Wells
- 3-Piece Light Pylon
- Aluminum Tread-plate Walkway

## STANDARD BOOM FEATURES

- Power Elevation
- Power Extension
- Dual Planetary Hydraulic Winches
- Air Cable Tensioners
- Air Free Spool
- Diagonal Rear Spades
- Flipper Foot Spades
- Dual Hydraulic Pump
- 360° Sheave Heads
- Cable Tie Backs

## STANDARD UNDERLIFT FEATURES

- Power Elevation
- Power Extension
- Power Tilt
- Hydraulic Fold
- 3-Stage Design
- 2 Piece Pivot Pin
- Upper/Lower Thrust Washer
- Handheld Lanyard
- Low Profile Crossbar
- 70° Pivoting Crossbar
- Low Profile Fork Holders
- 8 Pairs of Cast Steel Forks
- 1 Pair of Spring Lift Adapters
- 1 Pair of Hook Adapters

## OPTIONAL EQUIPMENT

- Air Shift PTO
- Tailgate Underlift Controls
- Additional Body Lengths
- Tunnel Crossovers
- 24", 30", 36", and 48" Tunnel Saddle Box
- Chrome Extrusion Molding
- Convenience Group (Rails & Steps)
- Aluminum Dress-Up Kits
- Aluminum Tubular Light Pylon
- 7-Drawer Tool Box
- 3-Drawer Tool Box (Tri-Axle Body)
- Folding Washdown Sink
- Offset Fork Holder Extensions
- Fork Riser Brackets (Standard w/ 9055)
- Chain Hook Slide Adapter
- Pintle Hook Attachment
- 5th Wheel Plate (Requires Pintle Hook Attachment)
- King Pin Attachment (Requires Pintle Hook Attachment)
- Trailer Ball Adapter (Requires Pintle Hook Attachment)
- Heavy Duty Tire Lift
- Tire Lift Storage Brackets
- Chain Washdown Compartment
- Additional Lift Forks

- "D" Rings (Tailboard Mount, Standard on the 7035 & 9055)
- Low Pull "D" Ring Kit
- Chain Package
- Endless Loop Sling Package
- Recovery Straps
- Screw Pin Shackle Package
- Snatch Blocks
- Boom Angle Indicator
- Light Bar
- Strobe Kits
- Work & Hook-Up Lighting
- Low Rider Underlift
- Wide Load Light Bar
- Engine Data Information Center
- Rear Camera & Monitor
- Navigation System
- Installation
- Power Touch System (Standard on the 7035 & 9055) Includes 15-Function Wired and Wireless Controls, In-Cab Underlift Control, and Front & Rear Function Switch Panels
- Power Pal System (Standard on the 4024/T2, 5130, & 5230) Includes 8-Function, Hand-Held Lanyard Control and 9-Function Floor Mounted Switch Panel
- In-Cab Underlift Controls for 4024/T2, 5130, or 5230



©2006 Miller Industries Towing Equipment Inc.

# CENTURY®

8503 Hilltop Drive • Ooltewah, TN 37363  
800-292-0330 • 423-238-4171  
FAX 423-238-5371 • www.MILLERIND.com

Distributed By:

