

INSTALLATION & OPERATION INSTRUCTIONS FOR THE BUS LIFT STORAGE SYSTEM

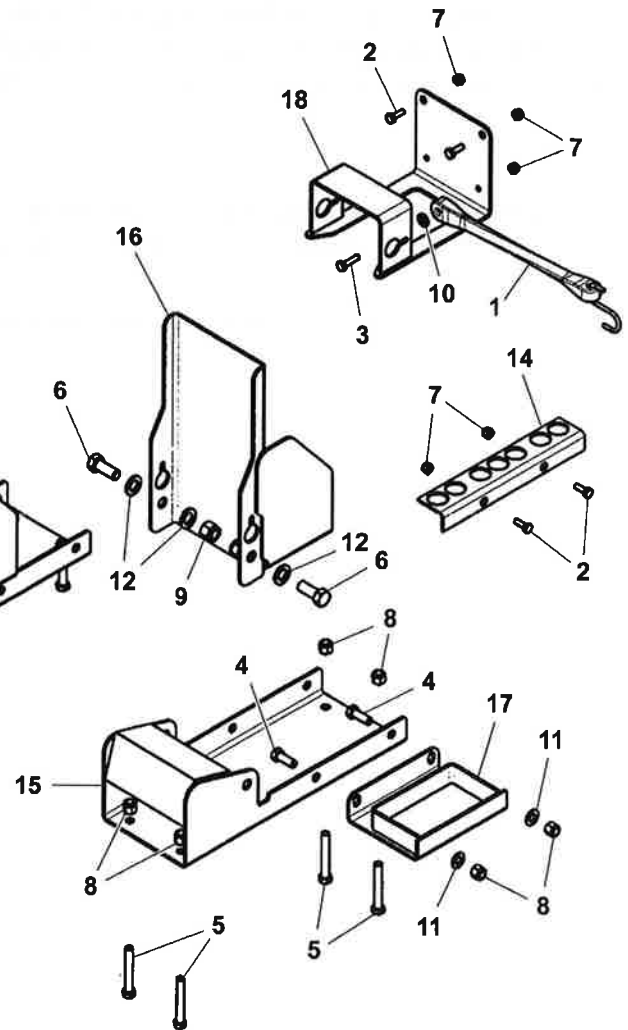
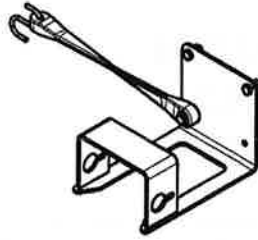
**READ ALL INSTRUCTIONS THOROUGHLY
BEFORE INSTALLING BUS LIFT STORAGE SYSTEM**

1. PARTS

The following drawing illustrates the parts included in the Bus Lift Storage System. Check contents of your kit before starting installation.

1. PARTS (cont'd)

BUS LIFT STORAGE SYSTEM



1. PARTS (cont'd)

BUS LIFT STORAGE SYSTEM

REF. NO.	NO. REQ'D	PART NUMBER	DESCRIPTION
1	2	0301956	STRAP, 10" RUBBER W/ S-HOOKS
2	6	0400066	SCREW, 1/4"-20 X 3/4" HEX HD CAP GR5
3	2	0400070	SCREW, 1/4"-20 X 1" HEX HD CAP GR5
4	4	0400126	SCREW, 3/8"-16 X 1" HEX HD CAP GR5
5	8	0400150	SCREW, 3/8"-16 X 2-1/2" HEX HD CAP GR5
6	4	0400177	SCREW, 1/2"-13 X 1-1/4" HEX HD CAP GR5
7	8	0400367	NUT, 1/4"-20 HEX NYLOK
8	12	0400392	NUT, 3/8"-16 HEX NYLOK
9	4	0400408	NUT, 1/2"-13 HEX NYLOK
10	2	0400451	WASHER, 1/4" FLAT
11	4	0400480	WASHER, 3/8" FLAT
12	8	0400492	WASHER, 1/2" FLAT
13	1	0501439	INSTALLATION INSTRUCTIONS
14	1	0703501	ANGLE, CROSS CONTROL
15	2	0806525	SUPPORT BRACKET WELDMENT
16	2	0806526	PIVOT BRACKET WELDMENT
17	2	0806527	ADJ. TUBE SUPPORT BRACKET WELDMENT
18	2	0806528	ADJ. TUBE LOCKING BRACKET WELDMENT

2. INSTALLATION

- (a) Position Cross Control Angle (Part # 0703501) on aft bulkhead of Bus Lift Storage System tool compartment. Using holes in angle as template, drill two (2) 9/32" holes through bulkhead. Attach angle to bulkhead using two (2) 1/4" x 3/4" hex head cap screws (Part # 0400066) and two (2) 1/4" nylok hex nuts (Part # 0400367). See Figure 1.

2. INSTALLATION (cont'd)

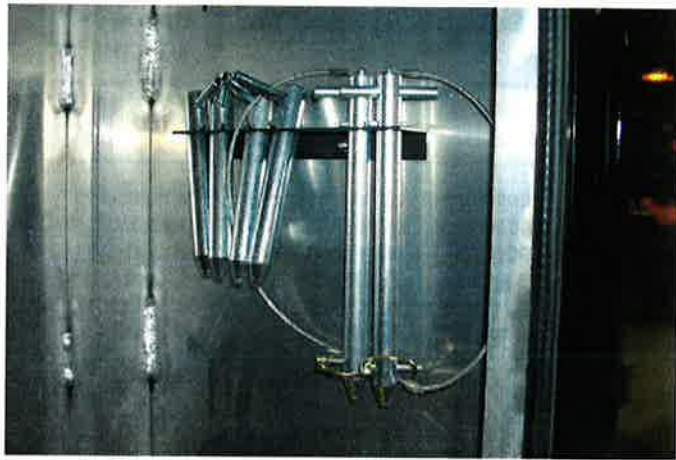


FIGURE 1

- (b) Locate center of door opening, measuring from the front bulkhead to the aft inside jamb. Mark center on bottom sill. See Figure 2.

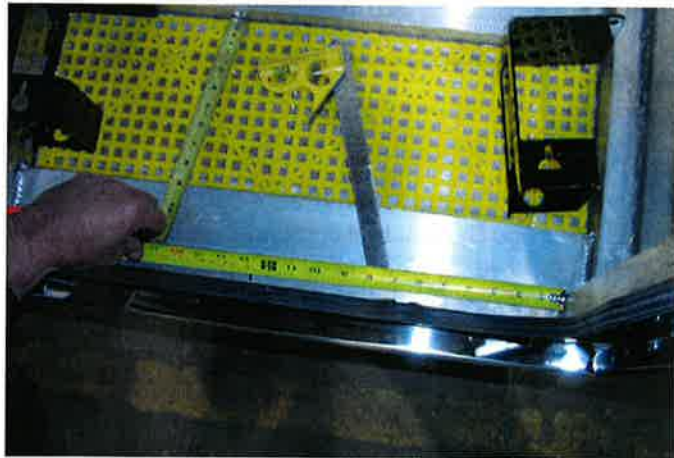


FIGURE 2

- (c) Measure 1" on both sides of center mark. See Figure 3.

2. INSTALLATION (cont'd)

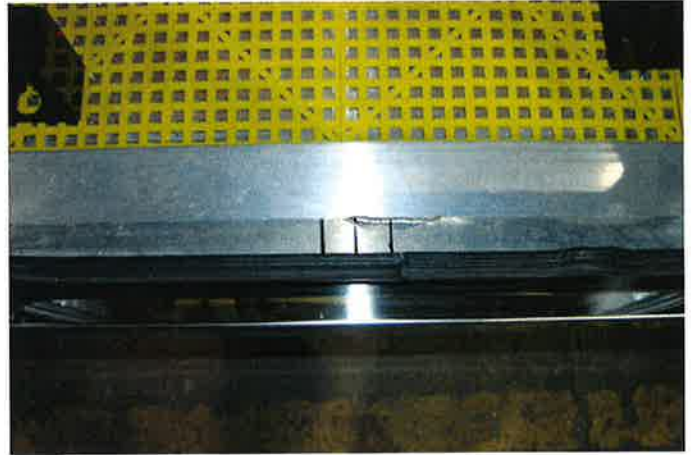


FIGURE 3

- (d) Place support & pivot bracket assemblies in bottom of tool compartment and position as shown in Figures 4 and 5.

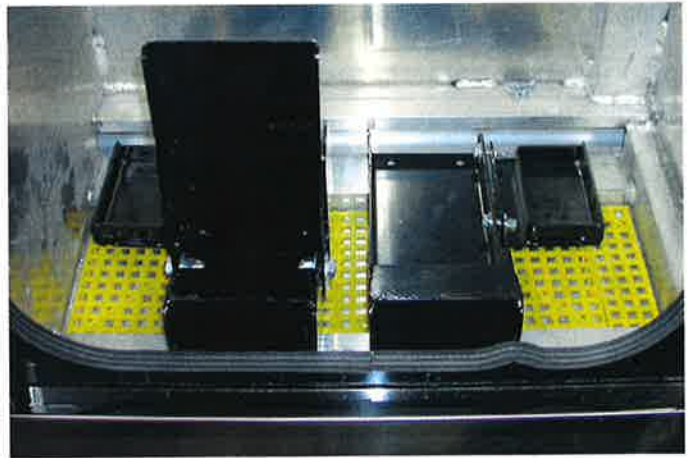


FIGURE 4

2. INSTALLATION (cont'd)

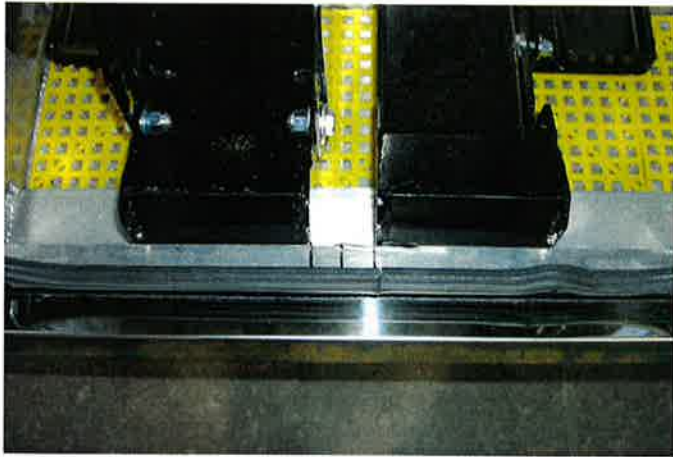


FIGURE 5

- (e) Using holes in support brackets as a template, drill eight (8) 13/32" holes through floor of tool compartment. Attach brackets to floor using eight (8) 3/8" x 2-1/2" hex head cap screws (Part # 0400150) and eight (8) 3/8" nylok hex nuts (Part # 0400392).
- (f) Place bus lift adjustment tube in support bracket weldment as shown in Figure 6.



FIGURE 6

2. INSTALLATION (cont'd)

- (g) Position adjustment tube locking bracket weldment (Part # 0806528) as shown in Figure 7.



FIGURE 7

- (h) Using holes in locking brackets as a template, drill four (4) 9/32" holes through flange. Attach angle to bulhead using four (4) 1/4" x 3/4" hex head cap screws (Part # 0400066) and four (4) 1/4" nylok hex nuts (Part # 0400367). See Figure 8.

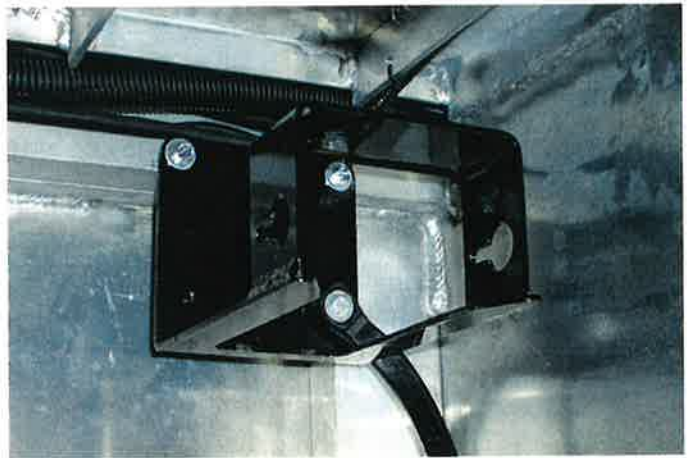


FIGURE 8

2. INSTALLATION (cont'd)

- (i) Attach one (1) rubber strap to each adjustment tube locking bracket weldment using one (1) 1/4" x 1" hex head cap screw (Part # 0400070) and one (1) 1/4" nylok hex nut (Part # 0400367). Refer to Figure 8.

3. OPERATION

- (a) To store bus lift adjustment tubes, place one end of tube in adjustment tube support bracket weldment. See Figure 9.



FIGURE 9

- (b) Tilt bus lift adjustment tube up until the other end fits into the adjustment tube locking bracket weldment. Lock adjustment tube into place with adjustment tube retainer pin. See Figure 10.

3. OPERATION (cont'd)

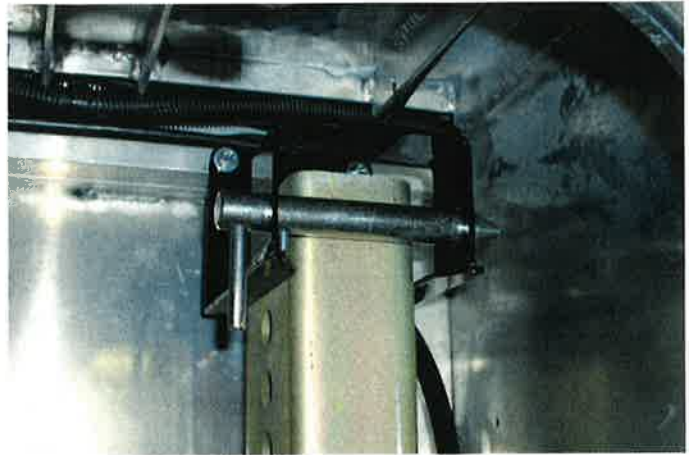


FIGURE 10

- (c) To store bus lift outer crosstubes, first tilt pivot bracket weldment out as far as it will go. Insert end of crosstube into pivot bracket weldment as shown in Figure 11.

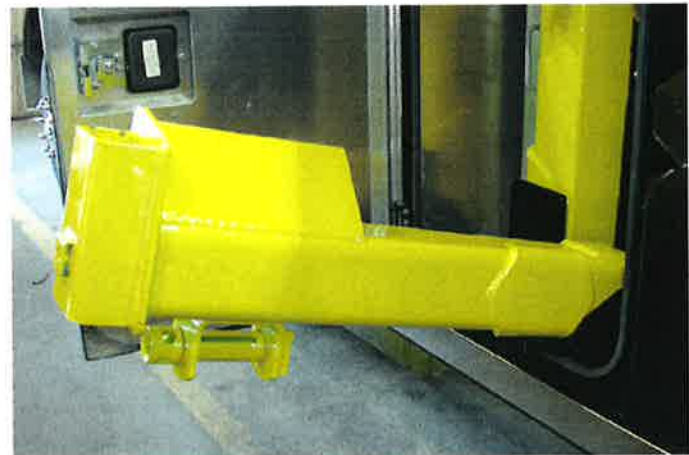


FIGURE 11

- (d) Tilt bus lift crosstube up into tool compartment. Crosstube is held in place with the rubber strap attached to the adjustment tube locking bracket weldment. See Figure 12.

3. OPERATION (cont'd)



FIGURE 12

(e) Figure 13 shows a properly installed bus lift storage system.

3. OPERATION (cont'd)

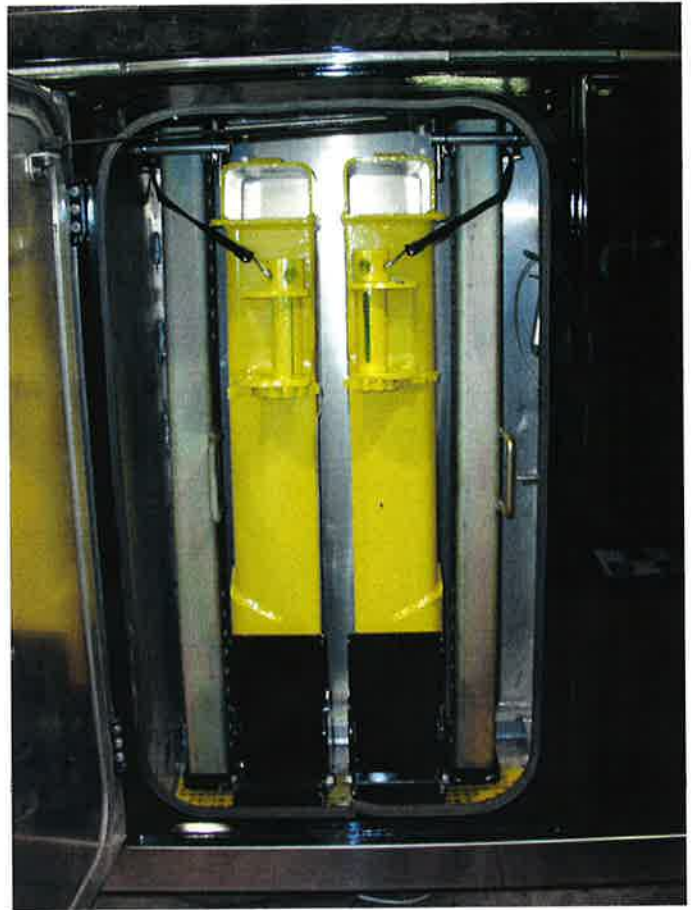


FIGURE 13

•