

3 Ton Aluminum Jack

Model: GAJ3T



GUNI™

INTENDED USE:

GUNI floor jacks are designed to lift, but not to support a load. Always use a pair of jack stands to support the load.

SPECIFICATIONS:

Capacity (Tons):	3
Low Height (in.):	3-15/16
High Height (in.):	19-1/16
Dimension (in.):	26 x 13-3/4 x 6-1/2
Weight (lb.):	63.7

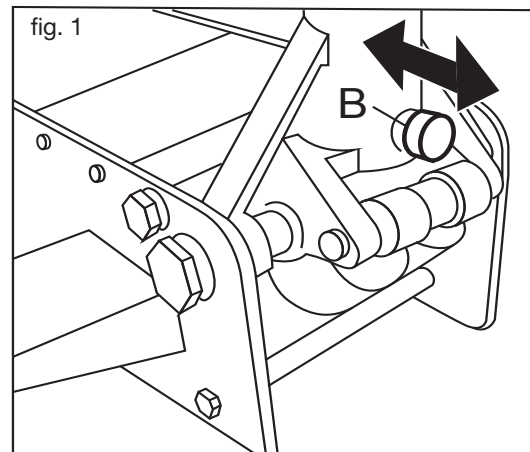
WARNING ⚠

- Study, understand, and follow all instructions before operating this jack.
- Inspect the jack before each use making sure it is not damaged, in poor condition, leaking hydraulic fluid, unstable, or has loose or missing hardware or components.
- Do not use this jack to dolly a vehicle.
- Do not exceed rated capacity.
- Use only on a hard, level surface capable of supporting the load.
- Lift only on areas of the vehicle as specified by the vehicle manufacturer.
- Only attachments and/or adapters supplied by the manufacturer shall be used.
- Center load on saddle and make sure setup is stable to prevent jack failure and/or loss of load.
- Support the vehicle with a matched set of jack stands immediately after lifting. Never get under an unsupported vehicle.
- Always lower jack in a slow, controlled rate of descent.
- No alterations or modifications shall be made to this jack.
- Failure to heed these warnings may result in property damage and/or personal injury or death.
- ⚠ **WARNING:** Cancer and reproductive harm – www.P65Warnings.ca.gov

SETUP

ASSEMBLY

1. The jack comprises the following parts: Jack body & Handle.
2. The handle socket is pressed down and supported by nylon supporting block in the package during transportation. Before assembling, please take out the nylon supporting block.
3. Undo the screw (fig. 1 B) in the handle socket, until it no longer protrudes into the handle socket.
4. Insert the pump handle into the handle socket hole completely.
5. Ensure that the handle is correctly inserted into the socket, then tighten the handle socket screw (fig. 1 B). **Pull up on the handle to make sure that the tip of the bolt has seated inside the groove near the bottom of the handle. If the bolt is seated properly, the handle will not pull out of the socket. Also make sure that the handle can be turned smoothly and easily once the handle socket screw has been tightened.**



PURGING AIR FROM HYDRAULIC SYSTEM

If the jack does not raise to maximum height or the pump strokes seem irregular there is probably air trapped in the hydraulic system:

- A. Turn the pump handle counterclockwise two full turns from its closed position.
- B. Quickly pump the jack 10 full strokes.
- C. Turn the pump handle clockwise until it stops and proceed to pump the jack to maximum height. If the condition seems better but still exists, **REPEAT STEPS A THROUGH C.**

OPERATING INSTRUCTIONS

Become familiar with jack's operating components. The pump handle must be rotated in a clockwise direction until it stops in order to pump the jack up to its desired height. Lowering the jack may be accomplished by slowly turning the pump handle in a counterclockwise direction. The more the handle is turned in a counterclockwise direction the faster the jack will lower. It will never be necessary to turn the pump handle more than 2 full complete counterclockwise revolutions to lower the jack.

3 Ton Aluminum Jack

Model: GAJ3T



TO RAISE A VEHICLE

1. The vehicle should be on a flat, level surface
2. Chock the vehicle wheels that will not be lifted off the ground. Turn the vehicle engine off and make sure that the vehicle transmission is in Park or in gear and then apply the emergency brake before lifting the vehicle.
3. Determine the vehicle's proper lift point and position the jack's saddle near that lift point. Pump the jack so the saddle makes contact with the lift point and the lift point is centered and secure on the saddle. If the saddle is not centered, lower the jack and make the proper alignment of saddle with the vehicle lift point.
4. Pump the jack so the vehicle lift point is raised slightly higher than the desired work height. After reaching the desired height, immediately position a matched pair of jack stands at the vehicle's designated support locations. Raise the stand's support columns so they make as close a contact as possible with the vehicle's designated support locations.
5. Slowly lower the vehicle onto the jack stands making sure the setup looks stable. If there is any unstable condition, raise the vehicle off the stands and correct the setup.

TO LOWER A VEHICLE

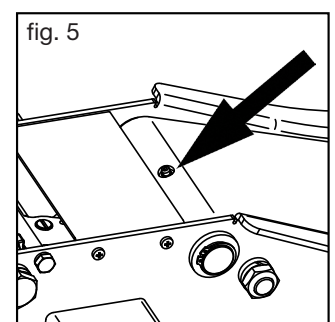
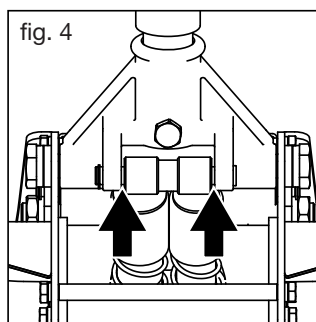
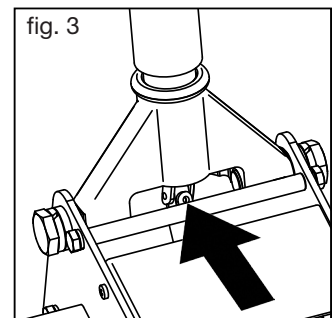
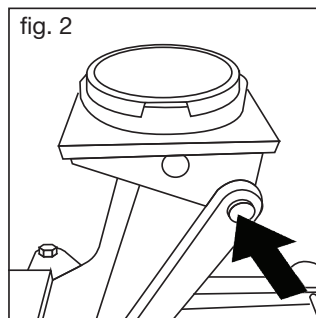
1. Follow steps 1 through 3 under "To Raise a Vehicle."
2. Raise the vehicle high enough to clear the jack stands and remove the jack stands from under the vehicle.
3. Slowly lower the vehicle to the ground.

MAINTENANCE

1. The jack owner should determine a maintenance schedule based on jack usage and shop conditions.
2. The jack should be stored in a well-protected environment and not left out in the weather. Any inoperable jack resulting from rust or corrosion is not eligible for warranty consideration.
3. The jack has a warning label which must be legible at all times. Any damaged or unreadable warning label must be replaced with a new label.
4. The jack should be inspected before each workday to make sure it is in its proper working condition. Any jack that is damaged, has loose or missing components or hydraulic leaks must be removed from service until repaired or replaced.
5. The jack should be lubricated as determined by the maintenance schedule. A white lithium base grease should be used on all jack chassis linkages, inside handle yoke, rear caster wheels, front wheels, and handle base roller. Zerk fittings, if provided, should be lubed. Any jacks inoperable due to insufficient or no lubrication are not eligible for warranty consideration.
6. There should be no reason to top off the jack's hydraulic fluid reservoir. If the jack is leaking fluid it must be serviced by knowledgeable repair technician. After repairs are completed, the jack should be refilled with a high quality non-detergent hydraulic jack oil – preferably with a 22 viscosity rating.

ADDING HYDRAULIC OIL

- A. If equipped, remove the jack's cover plate located in front of the handle yoke.
- B. Open the jack's release valve by rotating the jack handle two full counterclockwise rotations. The jack should be lowered all the way. Lower the pump handle to the horizontal position so it is level with the ground.
- C. Remove the reservoir fill plug or screw. Look down inside the reservoir – the fluid level should be no higher than the top of the cylinder inside the reservoir. Add or remove fluid to the proper level accordingly. Jack should be refilled with a high quality non-detergent hydraulic jack oil – preferably with a 22 viscosity rating. (Improper fluid level can cause pump problems.)
- D. After adding oil, hold down the saddle and gently pump the jack handle. If there is air in the system, bubbles will surface. Continue adding a small amount of jack oil and repeat the pumping process. Continue this process until no bubbles are seen during the pumping process. Make sure the oil level is at the top of the cylinder inside the reservoir plug hole.
- E. Replace reservoir fill screw or plug and conduct air purging procedure as described in SETUP instructions.



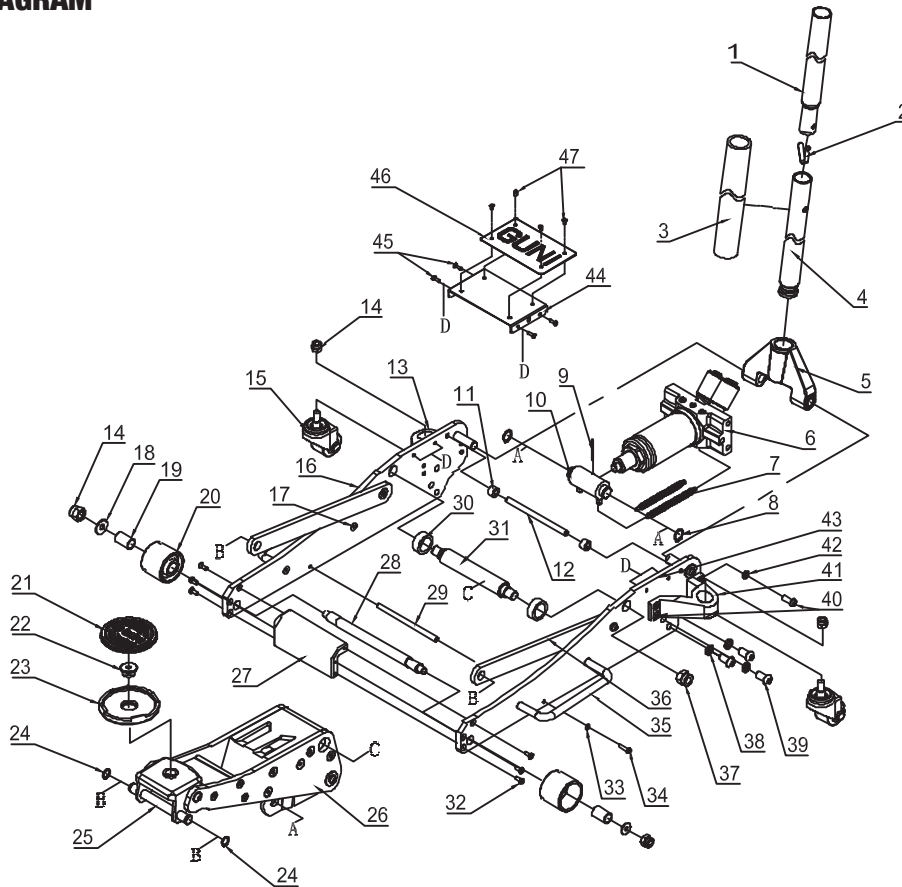
3 Ton Aluminum Jack

Model: GAJ3T



GUNI™

PARTS LIST AND DIAGRAM



Index #	Description	Qty.
1	UPPER HANDLE	1
2	PIN	1
3	HANDLE SLEEVE	1
4	LOWER HANDLE	1
5	HANDLE SOCKET	1
6	PUMP	1
7	SPRING	2
8	RETAINING RING	2
9	PIN	1
10	ROD ASSEMBLY	1
11	HANDLE STOP	2
12	HANDLE STOP RING	1
13	RIGHT CASTER SEAT	1
14	LOCK NUT	4
15	REAR CASTER	2
16	RIGHT FRAME SIDE PANEL	1
17	SCREW	4
18	FLAT WASHER	4
19	FIXED WHEEL BUSHING	2
20	FRONT FIXED WHEEL	2
21	RUBBER PAD	1
22	SCREW	1
23	SADDLE	1
24	RETAINING RING	2

Index #	Description	Qty.
25	REGULATING PLATE SHAFT	1
26	LIFTING ARM ASSY	1
27	FENDER PLATE	1
28	STIFFENER	1
29	CONNECTING ROD	1
30	LIFTING BUSHING	2
31	LIFTING ARM SHAFT	1
32	SCREW	6
33	LOCK WASHER	2
34	SCREW	2
35	HANDLE	2
36	ADJUSTMENT PLATE	2
37	LOCK NUT	2
38	LOCK WASHER	6
39	SCREW	6
40	SCREW	10
41	LEFT CASTER SEAT	1
42	LOCK WASHER	10
43	LEFT FRAME SIDE PANEL	1
44	COVER PLATE	1
45	SCREW	4
46	LOGO PLATE	1
47	SCREW	4

3 Ton Aluminum Jack

Model: GAJ3T



TROUBLESHOOTING

Symptom	Possible Cause	Remedy
Jack will not lift load or lowers slowly	Release valve is not tightened all the way	Make sure handle is inserted in handle yoke all the way and is engaged with the release valve
	Air trapped in hydraulic system	Follow air purging instructions under SETUP
	Load to be lifted exceeds exceeds jack's rated capacity	Use larger capacity rated jack
	Jack's hydraulic power unit not functioning properly	Contact customer service
Jack will not raise to maximum height	Air trapped in hydraulic system	Follow air purging instructions under SETUP
	Low hydraulic fluid level	Follow step 6 under MAINTENANCE
Jack will not lower all the way down without a load	Fluid level in reservoir too high	Follow step 6 under MAINTENANCE
	The linkages have binded	Find obstruction and lubricate according to step 5 in MAINTENANCE.
	Bent or deformed chassis components	Contact customer Service

1-YEAR LIMITED WARRANTY

GUNI warrants that GUNI branded products are free from defects in workmanship and materials. We will repair or replace products that fail to give satisfactory service due to workmanship or materials.

The warranty for GUNI branded products is ONE YEAR from the date of the original purchase. The proof of purchase must be available for any warranty consideration. Repair or replacement shall be at the sole direction of GUNI.

GUNI warranty is administered where the original purchase was made. GUNI will not provide any warranty for any product subjected to misuse, modification, unreasonable use, neglect, lack of maintenance or use after the unit is significantly worn.

CONTACT US

Phone: 800-381-1029
guniproducs.com/warranty