

3 Ton Off-Road Jack

Model: GORJ3T



INTENDED USE:

Off-Road Jacks are for lifting vehicles like SUVs, ATVs and UTVs in off road conditions but not supporting a load. It is necessary to support the load with appropriate means immediately after lifting.

SPECIFICATIONS:

Capacity (Tons)		3
Min. Height	Without Extension (in.)	6-1/8
	With Height Extension	1st Step (in.) 11-1/4
		2nd Step (in.) 12-3/8
Max. Height	Without Extension (in.)	21-5/8
	With Height Extension	1st Step (in.) 26-15/16
		2nd Step (in.) 28-1/8
Length (in.)		31-7/8
Weight (lb.)		81.8

WARNING ⚠

- Study, understand, and follow all instructions before operating this jack. Jack owner is responsible to have the manual and all warnings understood by all non-speaking English users in their own native language.
- Do not exceed rated capacity.
- Use only on a surface capable of supporting the load.
- Lift only on areas of the vehicle as specified by the vehicle manufacturer.
- Support the vehicle with appropriate means immediately after lifting.
- Do not move or dolly the vehicle while it is on the jack.
- Do not use jack if damaged, altered, in poor condition, leaking hydraulic fluid, or has loose or missing components. Repair or replace before using.
- Only attachments and/or adapters supplied by the manufacturer shall be used.
- Failure to heed these warnings may result in property damage, personal injury or death.
- ⚠ **WARNING:** Cancer and reproductive harm – www.P65Warnings.ca.gov



SETUP

Refer to parts breakdown drawings on the following pages to identify jack components.

1. Install larger wheel on rear axle and smaller wheel on front axle by sliding wheels onto axles and securing with snap rings (Fig 1, Fig 2).

Fig. 1

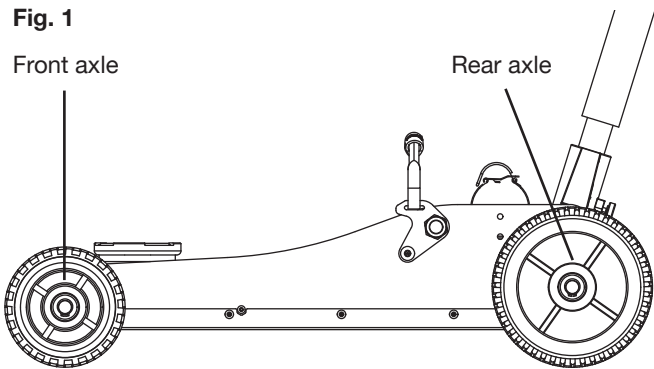
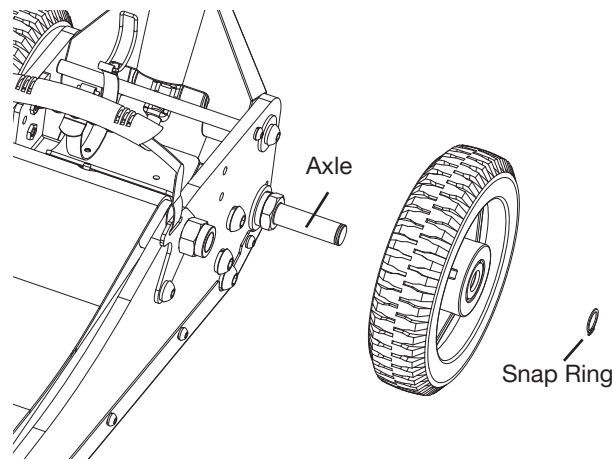


Fig. 2



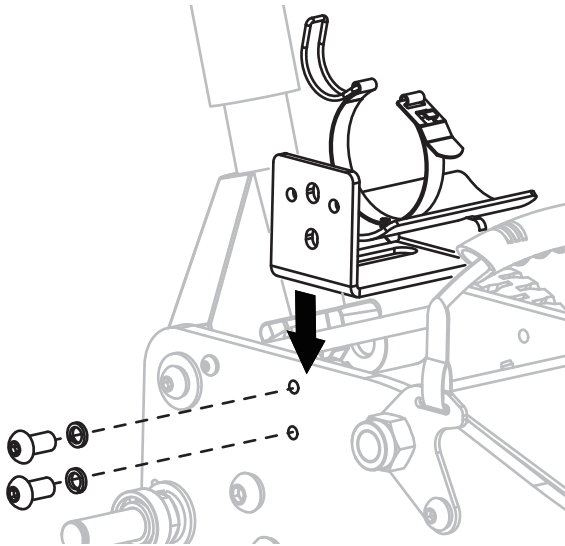
3 Ton Off-Road Jack

Model: GORJ3T



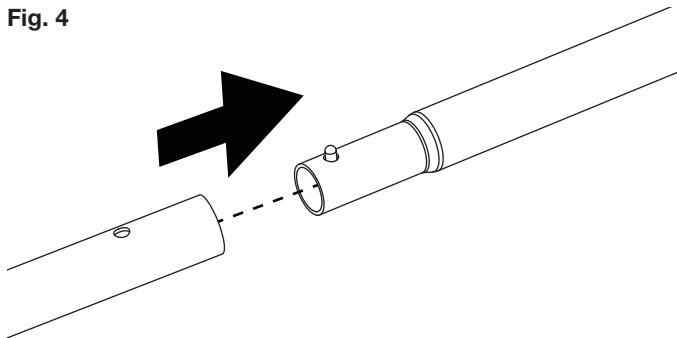
2. Install the extension bracket on either the right or left side of the jack. Remove the bolts and washers from the jack's frame as shown below. Align the bracket bolt holes with the holes on the side of the jack frame and reinstall bolts and washers.

Fig. 3



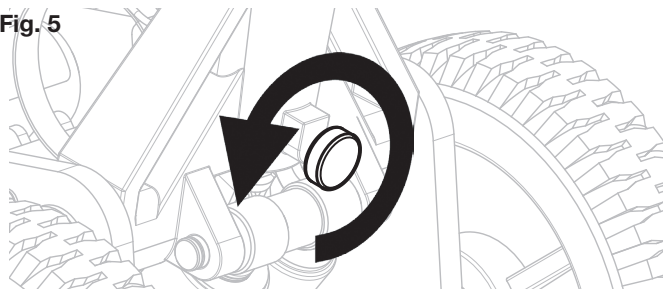
3. Assemble Two-piece handle together.

Fig. 4



4. Unscrew handle yoke screw so the handle can be inserted in the jack's handle yoke and engage the release valve. Secure handle in the yoke by tightening the handle yoke screw. **Pull up on the handle to make sure that the tip of the bolt has seated inside the groove near the bottom of the handle. If the bolt is seated properly, the handle will not pull out of the socket. Also make sure that the handle can be turned smoothly and easily once the handle socket screw has been tightened.**

Fig. 5

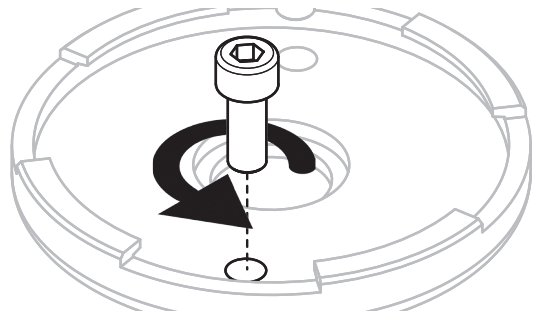


INSTALLING SADDLE EXTENSION

1. To install the Saddle Extension, adjust Saddle so that the two holes in the Saddle and Saddle Pad align with Saddle Base.

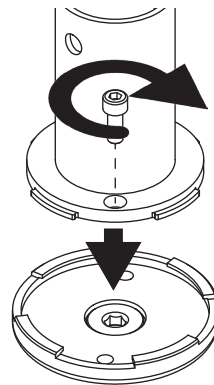
2. Loosen Saddle Extension Set Screw (45) and remove Extension from its storage place.

Fig. 6



3. Place Saddle Extension onto Saddle and secure with two Saddle Extension Set Screws (45).

Fig. 7



4. Use the Hex Wrench that comes with the jack to tighten two screws.
5. In order to activate the pump handle, disengage the handle locking lever and proceed to pump to make sure there is no air trapped in the jack's hydraulic system due to shipping and handling. If the jack's lift arm raises partially or abnormally, follow these directions to remove air from the hydraulic system:

PURGING AIR FROM HYDRAULIC SYSTEM

If the jack does not raise to maximum height or the pump strokes seem irregular there is probably air trapped in the hydraulic system:

- A. Turn the pump handle counterclockwise two full turns from its closed position.
- B. Quickly pump the jack 10 full strokes.
- C. Turn the pump handle clockwise until it stops and proceed to pump the jack to maximum height. If the condition seems better but still exists, **REPEAT STEPS A THROUGH C.**

OPERATING INSTRUCTIONS

IMPORTANT: Determine the work height of the vehicle in order to accomplish the intended work. If the jack will not lift the vehicle to the required height it will be necessary to unlatch the saddle extension from the jack's chassis and install it on the jack's stock saddle. For additional height it will be necessary to put the extension in position 2, making sure the extension saddle will still clear the vehicle to reach the

3 Ton Off-Road Jack

Model: GORJ3T



vehicle's designated lift when the jack is pumped. The pump arc of the handle will determine how high the jack's lift arm will raise. For example, a full incremental pump stroke of the handle will raise the jack's lift arm higher than if it is a partial pump stroke. It is important to realize the importance of the jack's saddle coming in contact with the designated vehicle lift point. Therefore, it might be necessary to make partial incremental pump strokes so the saddle is guaranteed to make contact with the intended vehicle lift point.

TO LIFT A VEHICLE:

1. Chock the vehicle wheels that will not be lifted off the ground. Turn the vehicle engine off and make sure that the vehicle transmission is in Park or in gear and then apply the emergency brake before lifting the vehicle.
2. Make sure of the vehicle's designated lift point by referring to the vehicle's owner's manual or consulting the vehicle manufacturer.
3. Based on the manufacturers' lift height it may be necessary to utilize the adapters. If adapters are necessary follow the instructions for **INSTALLING SADDLE EXTENSION** on page 2.
4. The handle should be locked in position in order to maneuver the jack into the proper lift position. Try not to position the jack at an angle relative to the vehicle. The jack's position should be perpendicular to the front, rear or sides of the vehicle.
5. Once the jack is in its intended lift position unlock the handle lock so the jack can be pumped.
6. Pump the jack until the jack's saddle makes contact with the vehicle's designated lift point. Make sure the load is centered on the saddle before lifting. It may be necessary to lower the jack's saddle to maneuver the jack at this time to guarantee the jack's saddle is centered with the vehicle's lift point.
7. Once the saddle and lift point are properly aligned continue to lift the vehicle to its desired work height and immediately place a pair of jack stands at support points under the vehicle. Raise the jack stand's support columns as close to the vehicle support points as possible and make sure the columns are locked in position and the vehicle is not resting on the support columns' saddle locating lugs.
8. Lower the jack's lift arm by turning the handle slowly until the vehicle is supported by the jack stands. Make sure the setup is stable. If the setup does not appear stable, raise the vehicle higher so the stands can be readjusted and then repeat steps 1 through 6.

TO LOWER A VEHICLE:

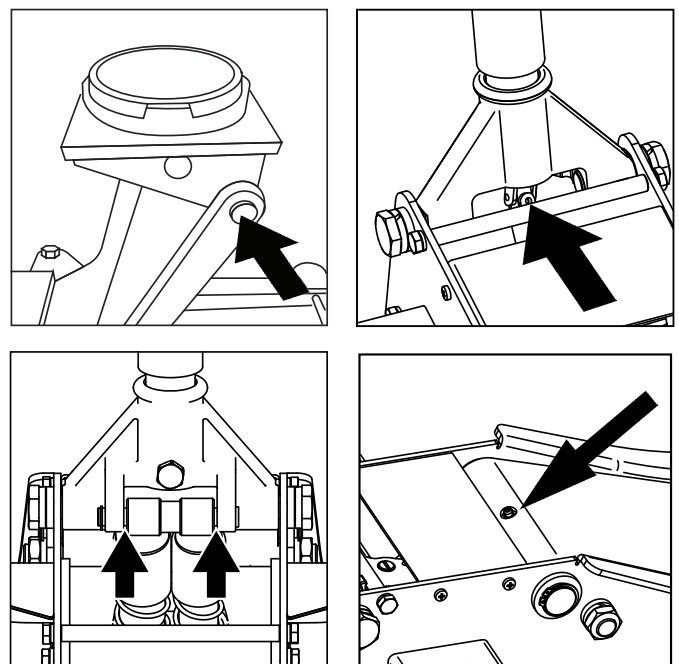
1. Follow steps 1 through 5 above.
2. Once the saddle and lift point are properly aligned continue to operate the jack until the vehicle is lifted off the jack stand saddles.
3. Remove the jack stands from underneath the vehicle and lower the jack until it clears the vehicle and can be removed from underneath the vehicle.

MAINTENANCE

The jack owner should develop a maintenance schedule based on the jack usage and operating environment.

1. The jack shall not be stored out in the open or exposed to inclement weather. Any jack showing signs of rust or corrosion will not be eligible for warranty consideration.
2. The jack owner is responsible for keeping jack warnings legible and the owner's manual in a common place for all users to see.
3. Inspect the jack before every use to make sure there are no loose or missing parts, no hydraulic leaks and the jack performs as expected. In any adverse conditions, immediately remove the jack from service until repaired.
4. The jack must be lubricated periodically at all external moving points, including lift arm, guide arms, and wheels making sure they function as intended (**SEE FIGURE 8**). Do not lubricate any external hydraulic components. Any jack components not properly lubricated will not be eligible for warranty consideration.
5. It should not be necessary to fill the jack's reservoir with hydraulic fluid unless the jack has been reconditioned. Any jack having an external leak should be repaired at an authorized service center and then filled with a non-detergent 22 viscosity rating hydraulic jack oil. Never use any fluid other than hydraulic jack oil to avoid damaging seals.
6. It may be necessary to bleed air from the hydraulic system after filling and this can be accomplished by following **PURGING AIR FROM HYDRAULIC SYSTEM** instructions on previous page.

Figure 8



3 Ton Off-Road Jack

Model: GORJ3T



ADDING HYDRAULIC OIL

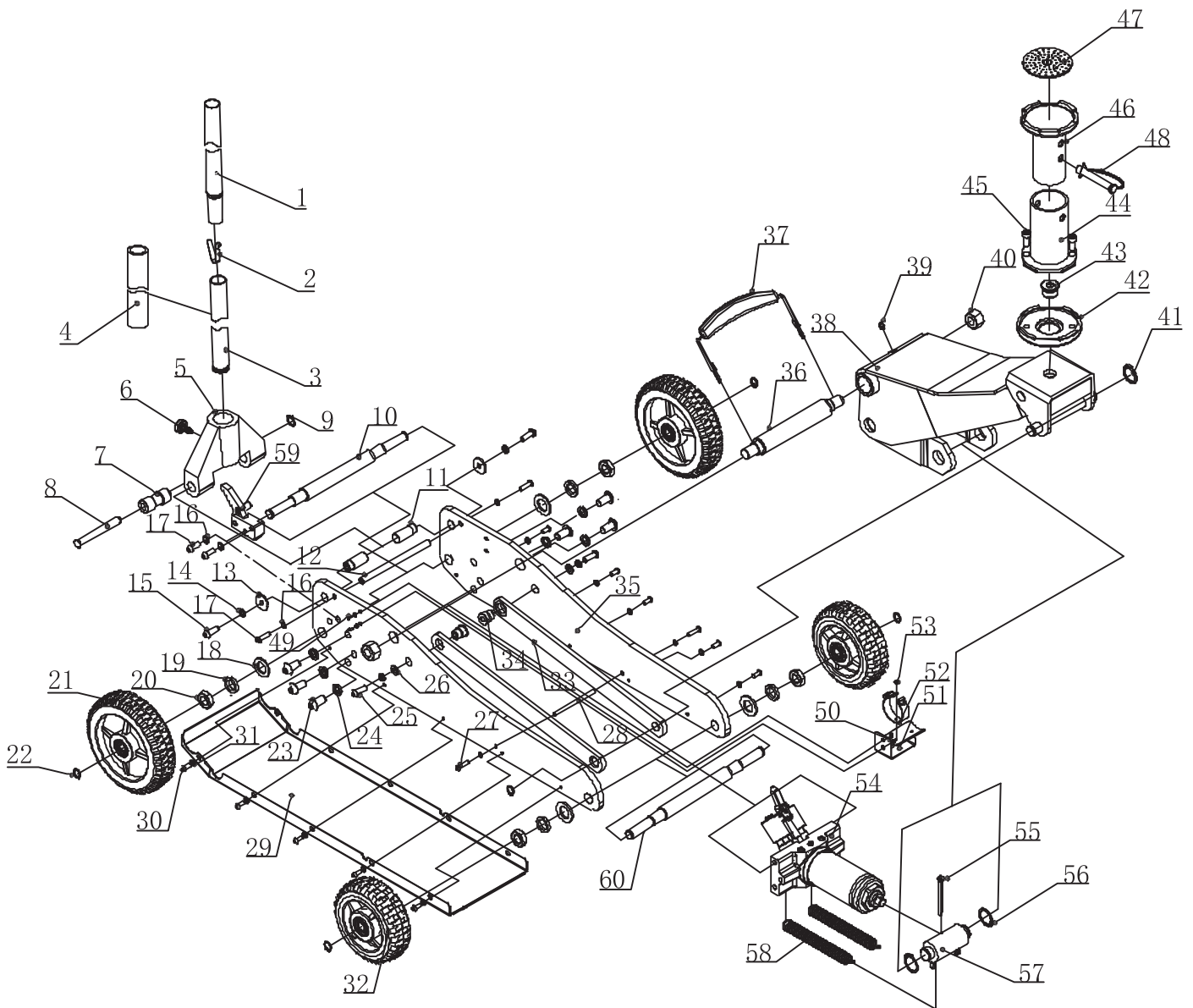
- A. If equipped, remove the jack's cover plate located in front of the handle yoke.
- B. Open the jack's release valve by rotating the jack handle two full counterclockwise rotations. The jack should be lowered all the way. Lower the pump handle to the horizontal position so it is level with the ground.
- C. Remove the reservoir fill plug or screw. Look down inside the reservoir - the fluid level should be no higher than the top of the cylinder inside the reservoir. Add or remove fluid to the proper level accordingly. Jack should be refilled with a high quality non-detergent hydraulic jack oil – preferably with a 22 viscosity rating. (Improper fluid level can cause pump problems.)
- D. After adding oil, hold down the saddle and gently pump the jack handle. If there is air in the system, bubbles will surface. Continue adding a small amount of jack oil and repeat the pumping process. Continue this process until no bubbles are seen during the pumping process. Make sure the oil level is at the top of the cylinder inside the reservoir plug hole.
- E. Replace reservoir fill screw or plug and conduct air purging procedure as described in SETUP instructions.

3 Ton Off-Road Jack

Model: GORJ3T



PARTS LIST AND DIAGRAM



3 Ton Off-Road Jack

Model: GORJ3T



PARTS LIST

Index #	Description	Qty.
1	UPPER HANDLE	1
2	PIN	1
3	LOWER HANDLE	1
4	HANDLE SLEEVE	1
5	HANDLE SOCKET	1
6	SCREW	1
7	PUMP ACTUATOR SHAFT	1
8	PIN	1
9	RETAINING RING	1
10	FIXED WHEEL AXLE	2
11	HANDLE SOCKET SHAFT	2
12	HANDLE STOP	1
13	FLAT WASHER	2
14	LOCK WASHER	4
15	SCREW	2
16	LOCK WASHER	4
17	SCREW	4
18	LOCK WASHER	4
19	LOCK WASHER	4
20	NUT	4
21	8" FIXED REAR WHEEL	2
22	RETAINING RING	4
23	SCREW	6
24	LOCK WASHER	6
25	SCREW	2
26	FLAT WASHER	2
27	SCREW	2
28	CONNECTING ROD	1
29	SKID PLATE	1
30	SCREW	10

Index #	Description	Qty.
31	LOCK WASHER	12
32	6" FIXED FRONT WHEEL	2
33	LIFTING ADJUSTMENT PLATE	2
34	NUT	2
35	SIDE PLATE	2
36	LIFTING ARM AXLE	1
37	HANDLE ASSEMBLY	1
38	LIFTING ARM ASSY	1
39	ZERK FITTING	1
40	LOCK NUT	2
41	RETAINING RING	2
42	SADDLE	1
43	SCREW	1
44	OUTER EXTENSION TUBE	1
45	SADDLE EXTENSION SCREW	2
46	INNER EXTENSION TUBE	1
47	RUBBER SADDLE PAD	1
48	PIN	1
49	SCREW	2
50	NUT	2
51	SADDLE BRACKET	1
52	SADDLE EXTENSION CLIP	1
53	SCREW	1
54	PUMP ASSEMBLY	1
55	PIN	1
56	RETAINING RING	2
57	ROD ASSEMBLY	1
58	SPRING	2
59	LIFT ARM LOCK	1
60	FRONT AXLE	1

3 Ton Off-Road Jack

Model: GORJ3T



TROUBLESHOOTING

Symptom	Possible Cause	Remedy
Will not lift or hold a load.	Release valve is not seating.	Check connection of valve from handle to pump assembly.
	Air trapped in hydraulic system	Follow step 3 under setup.
Will not lift to maximum height.	Air trapped in hydraulic system.	Follow step 3 under setup.
	External hydraulic oil leak.	Replace seals and add correct amount of oil.
Will not lower all way down without load.	Mechanical restriction.	Inspect for bent or deformed components and repair or replace accordingly.
	No lubrication in in movable parts.	Fully lubricate all moving parts involving the action of the lift arm and parts involving the action of the lift arm and associated linkages.

1-YEAR LIMITED WARRANTY

GUNI warrants that GUNI branded products are free from defects in workmanship and materials. We will repair or replace products that fail to give satisfactory service due to workmanship or materials.

The warranty for GUNI branded products is ONE YEAR from the date of the original purchase. The proof of purchase must be available for any warranty consideration. Repair or replacement shall be at the sole direction of GUNI.

GUNI warranty is administered where the original purchase was made. GUNI will not provide any warranty for any product subjected to misuse, modification, unreasonable use, neglect, lack of maintenance or use after the unit is significantly worn.

CONTACT US

Phone: 800-381-1029
guniproducs.com/warranty