

1,575LB Mechanical Vehicle Positioning Dolly

Model: GVPD1575



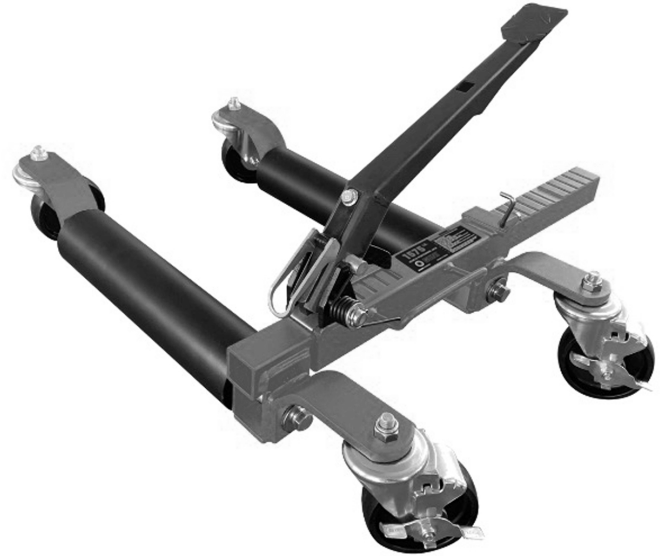
GUNI™

INTENDED USE:

GUNI Mechanical Vehicle Positioning Dolly is designed for use on tires to allow vehicle to be maneuvered in any direction around a garage or workspace on level ground.

SPECIFICATIONS:

Capacity (lb.):	1,575
Max. Tire Width (in.):	13
Max. Tire Diameter (in.):	31-7/8
Min./Max. Opening (in.):	12-9/16 - 28-5/16
Roller Material:	Steel
Weight (lb.):	35.3



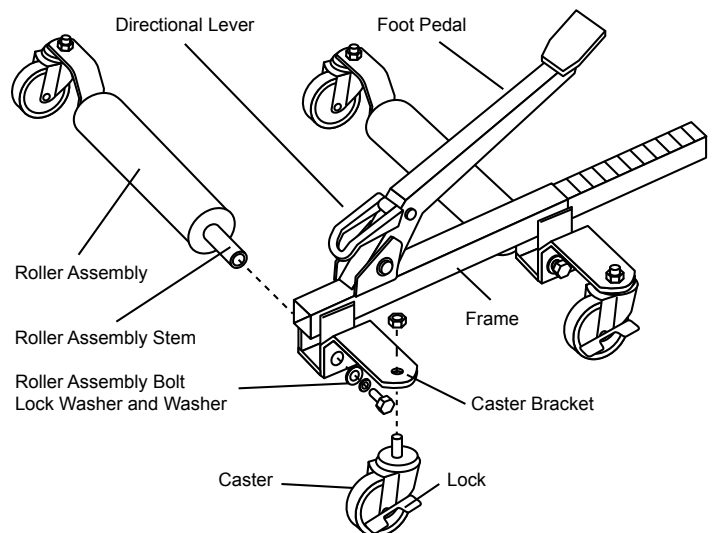
WARNING ⚠

- Study, understand, and follow all instructions before operating this dolly.
- Inspect the dolly before each use making sure it is not damaged, in poor condition, leaking hydraulic fluid, unstable, or has loose or missing hardware or components.
- Do not exceed rated capacity.
- Do not operate dolly on inclined surfaces. Use only on a hard, level surface capable of supporting the load.
- Do not start the vehicle's engine, or drive with dolly in use. Dollies are designed for hand maneuvering of vehicles only.
- Keep clear of load's path while placing on and removing from dollies, and while moving.
- Be aware of dynamic loading! Sudden load movement may briefly create excess load causing product failure.
- No alterations or modifications shall be made to this dolly.
- Failure to heed these warnings may result in property damage and/or personal injury or death.
- ⚠ **WARNING:** Cancer and reproductive harm – www.P65Warnings.ca.gov

SETUP

ASSEMBLY

1. Unpack the Positioning Dolly making sure that all of the parts and pieces have been included.
2. Remove the bolts and washers from each roller assembly.
3. Insert roller assembly bolt stem into hole on frame.
4. Reattach bolts and washers and tighten to secure roller to frame.
5. Remove nuts from the casters.
6. Insert caster stem up through the holes in the caster brackets on the frame.
7. Reattach nut and tighten to secure casters to frame.



OPERATING INSTRUCTIONS

1. Step slightly to hold the foot pedal to remove the foot pedal hook. (Warning: The foot pedal is spring loaded and could fly up when the hook is unlocked. Slowly lift foot from pedal once hook is unlocked.)
2. Make sure vehicle is in Park and on a flat level surface.
3. Flip the directional lever to the up position (Unlock position).
4. Manually spread the rollers to fit around the tire.
5. Once in place, close the rollers against the tire tread by hand. Then, flip the directional lever to the down position (Lock position).
6. Pump the foot pedal to tighten the rollers around the tire until it is completely off the ground and on the dolly.
7. Lock the locking casters on the frame side of the dolly.
8. Repeat steps 1-7 on the vehicle's opposite tire.
9. To lower the vehicle off the dolly flip the directional lever up and pump the foot pedal to spread the rollers.
10. If vehicle is being kept on dollies for any period of time, make sure that the caster lock is activated so the dolly does not roll unintentionally.

1,575LB Mechanical Vehicle Positioning Dolly

Model: GVPD1575



MAINTENANCE

Keep the Positioning Dolly clean and well lubricated to prevent dirt and rust. If a Dolly has been exposed to rain, snow, sand, or grit, it must be cleaned before being used.

1. Store Dollies in a well-protected area where they will not be exposed to corrosive vapors, abrasive dust, or any other harmful elements.
2. Lightly lubricate the sliding area of the square tubing monthly. Wipe off any excess grease to ensure ratchet mechanism performs correctly.
3. Inspect each Dolly before each use. Take corrective action if any of the following problems are found:
 - a. cracked or damaged tubing, frame, or rollers
 - b. excessive wear, bending, or other damage
 - c. loose hardware
 - d. modified or altered equipment

1-YEAR LIMITED WARRANTY

GUNI warrants that GUNI branded products are free from defects in workmanship and materials. We will repair or replace products that fail to give satisfactory service due to workmanship or materials.

The warranty for GUNI branded products is ONE YEAR from the date of the original purchase. The proof of purchase must be available for any warranty consideration. Repair or replacement shall be at the sole direction of GUNI.

GUNI warranty is administered where the original purchase was made. GUNI will not provide any warranty for any product subjected to misuse, modification, unreasonable use, neglect, lack of maintenance or use after the unit is significantly worn.

CONTACT US

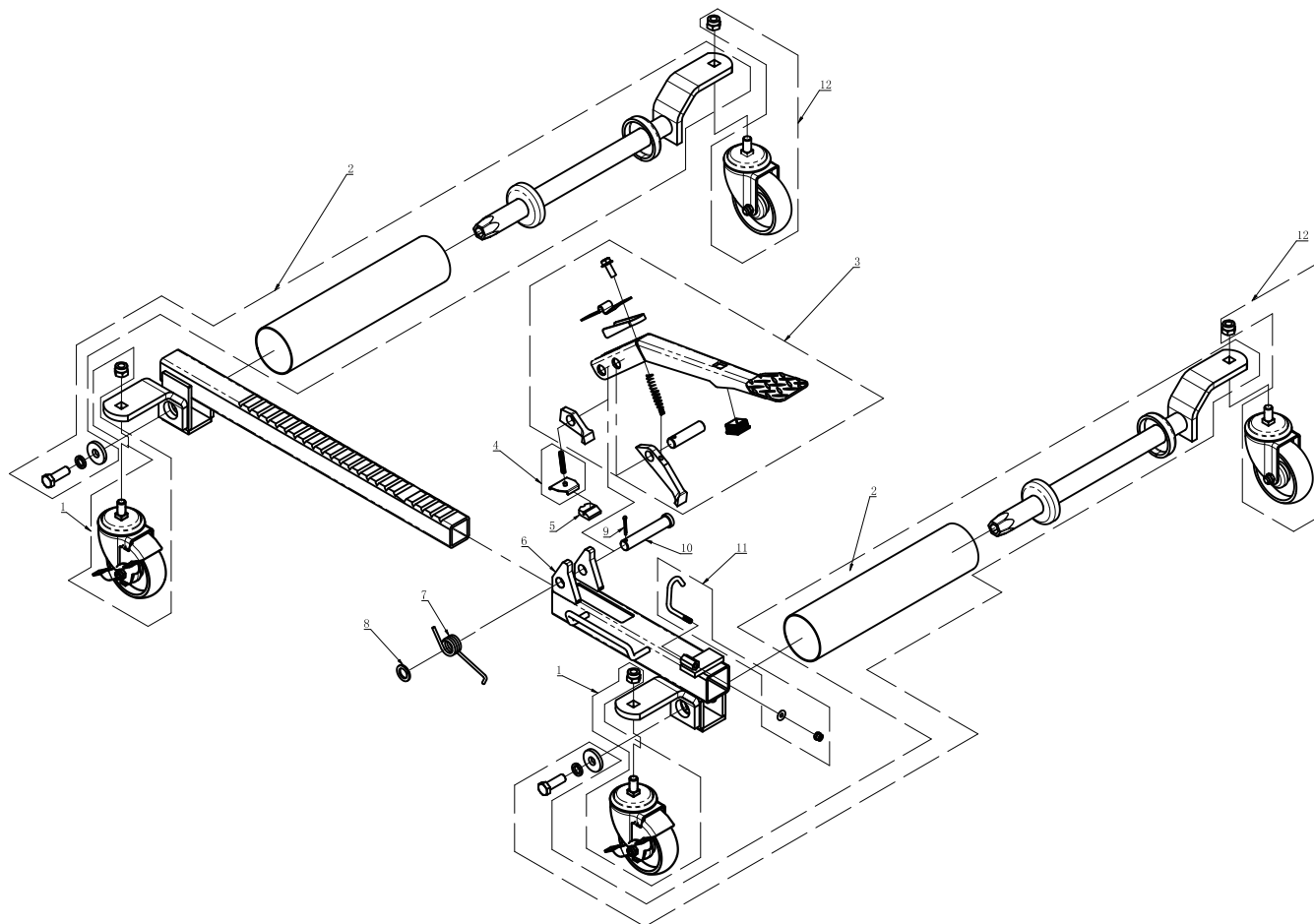
Phone: 800-381-1029
guniproducs.com/warranty

1,575LB Mechanical Vehicle Positioning Dolly



Model: GVPD1575

PARTS LIST AND DIAGRAM



Index #	Description	Qty.
1	LOCK CASTER ASSEMBLY	2
2	ROLLER ASSEMBLY	2
3	FOOT PEDAL ASSEMBLY	1
4	PLATE	1
5	LIMIT BLOCK	1
6	PLATE	1
7	SPRING	1
8	WASHER	1
9	R PIN	1
10	PIN	1
11	PEDAL LATCH ASSEMBLY	1
12	CASTER ASSEMBLY	2