

1,750LB Mechanical SUV Positioning Dolly

Model: GVPD1750



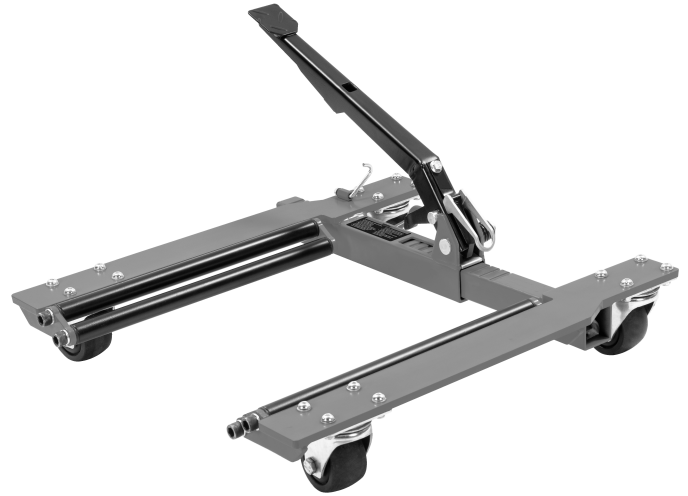
GUNI™

INTENDED USE:

GUNI Mechanical SUV Positioning Dolly is designed for use on tires to allow vehicles with extra wide wheels like SUVs and Trucks to be maneuvered in any direction around a garage or workspace on level ground.

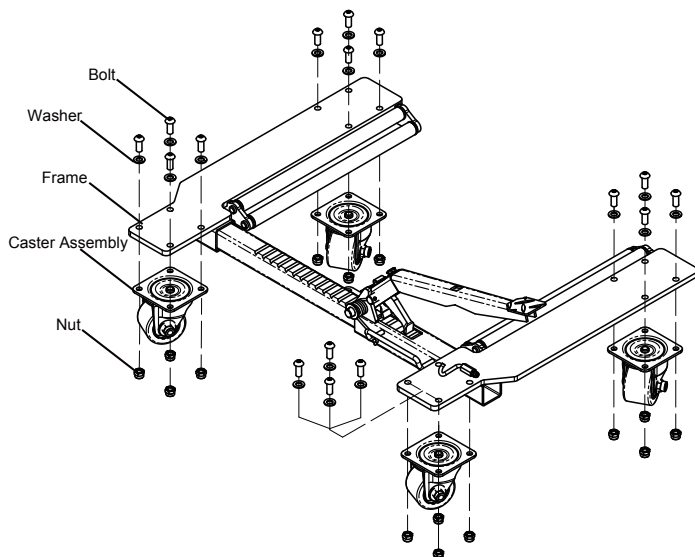
SPECIFICATIONS:

Capacity (lb.):	1,750
Max. Tire Width (in.):	16
Max. Tire Diameter (in.):	31-7/8
Min./Max. Opening (in.):	10.8 - 25.8
Roller Material:	Steel
Weight (lb.):	44.1



WARNING ⚠

- Study, understand, and follow all instructions before operating this dolly.
- Inspect the dolly before each use making sure it is not damaged, in poor condition, leaking hydraulic fluid, unstable, or has loose or missing hardware or components.
- Do not exceed rated capacity.
- Do not operate dolly on inclined surfaces. Use only on a hard, level surface capable of supporting the load.
- Do not start the vehicle's engine, or drive with dolly in use. Dollies are designed for hand maneuvering of vehicles only.
- Keep clear of load's path while placing on and removing from dollies, and while moving.
- Be aware of dynamic loading! Sudden load movement may briefly create excess load causing product failure.
- No alterations or modifications shall be made to this dolly.
- Failure to heed these warnings may result in property damage and/or personal injury or death.
- ⚠ **WARNING:** Cancer and reproductive harm – www.P65Warnings.ca.gov



SETUP

ASSEMBLY

1. Unpack the Positioning Dolly making sure that all of the parts and pieces have been included.
2. Remove the bolts, washers and nuts from caster assembly.
3. Assemble the caster assembly back onto the frame, and fix the caster assembly with the bolt, washer and nut.
4. Assemble all 4 caster assemblies following step 3.

OPERATING INSTRUCTIONS

1. Step slightly to hold the foot pedal to remove the foot pedal hook. (Warning: The foot pedal is spring loaded and could fly up when the hook is unlocked. Slowly lift foot from pedal once hook is unlocked.)
2. Make sure vehicle is in Park and on a flat level surface.
3. Flip the directional lever to the up position (Unlock position).
4. Manually spread the rollers to fit around the tire.
5. Once in place, close the rollers against the tire tread by hand. Then, flip the directional lever to the down position (Lock position).
6. Pump the foot pedal to tighten the rollers around the tire until it is completely off the ground and on the dolly.
7. Lock the locking casters on the frame side of the dolly.
8. Repeat steps 1-7 on the vehicle's opposite tire.
9. To lower the vehicle off the dolly flip the directional lever up and pump the foot pedal to spread the rollers.
10. If vehicle is being kept on dollies for any period of time, make sure that the caster lock is activated so the dolly does not roll unintentionally.

1,750LB Mechanical SUV Positioning Dolly

Model: GVPD1750



MAINTENANCE

Keep the Positioning Dolly clean and well lubricated to prevent dirt and rust. If a Dolly has been exposed to rain, snow, sand, or grit, it must be cleaned before being used.

1. Store Dollies in a well-protected area where they will not be exposed to corrosive vapors, abrasive dust, or any other harmful elements.
2. Lightly lubricate the sliding area of the square tubing monthly. Wipe off any excess grease to ensure ratchet mechanism performs correctly.
3. Inspect each Dolly before each use. Take corrective action if any of the following problems are found:
 - a. cracked or damaged tubing, frame, or rollers
 - b. excessive wear, bending, or other damage
 - c. loose hardware
 - d. modified or altered equipment

1-YEAR LIMITED WARRANTY

GUNI warrants that GUNI branded products are free from defects in workmanship and materials. We will repair or replace products that fail to give satisfactory service due to workmanship or materials.

The warranty for GUNI branded products is ONE YEAR from the date of the original purchase. The proof of purchase must be available for any warranty consideration. Repair or replacement shall be at the sole direction of GUNI.

GUNI warranty is administered where the original purchase was made. GUNI will not provide any warranty for any product subjected to misuse, modification, unreasonable use, neglect, lack of maintenance or use after the unit is significantly worn.

CONTACT US

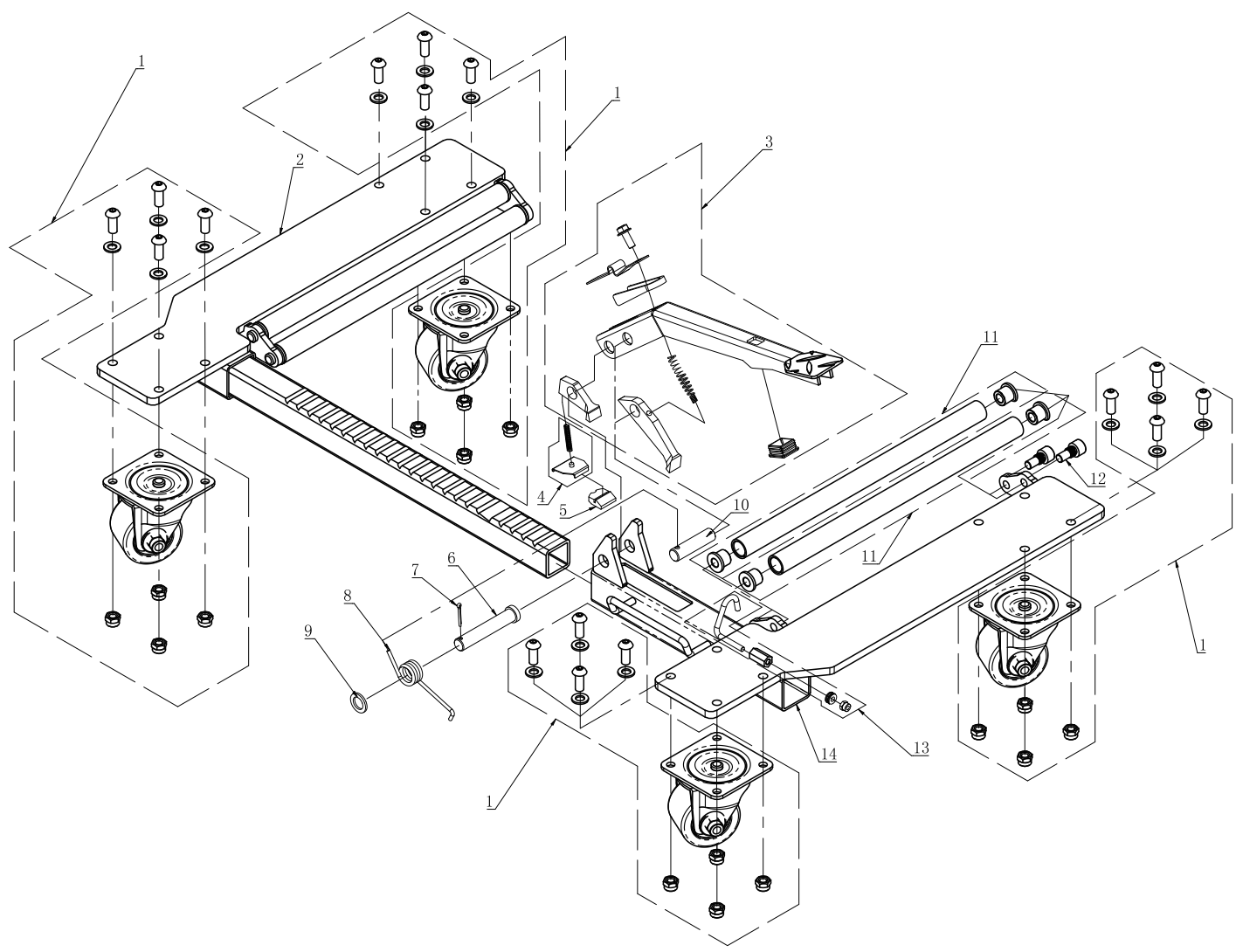
Phone: 800-381-1029
guniproductions.com/warranty

1,750LB Mechanical SUV Positioning Dolly

Model: GVPD1750



PARTS LIST AND DIAGRAM



Index #	Description	Qty.
1	CASTER ASSEMBLY	4
2	RATCHET ASSEMBLY	1
3	FOOT PEDAL ASSEMBLY	1
4	PLATE	1
5	LIMIT BLOCK	1
6	PIN	1
7	R PIN	1
8	SPRING	1
9	WASHER	1
10	PIN	1
11	ROLLER ASSEMBLY	4
12	SCREW	4
13	PEDAL LATCH ASSEMBLY	1
14	RECEIVER ASSEMBLY	1