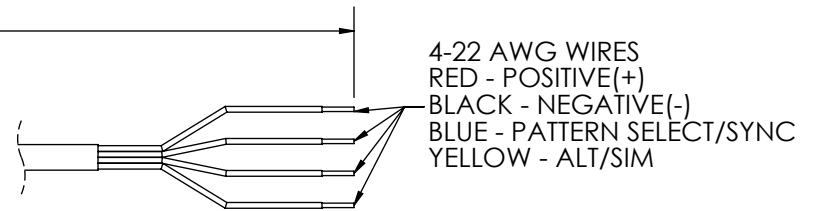
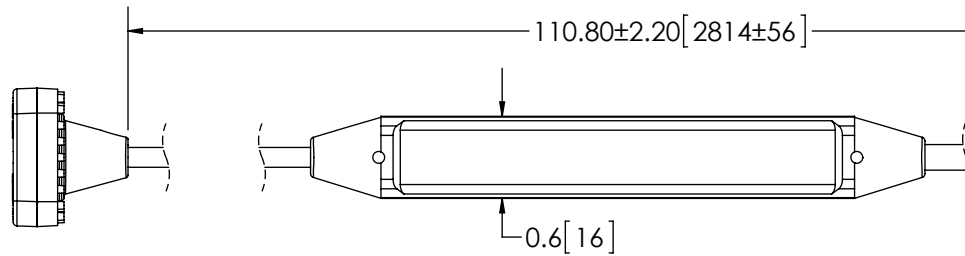
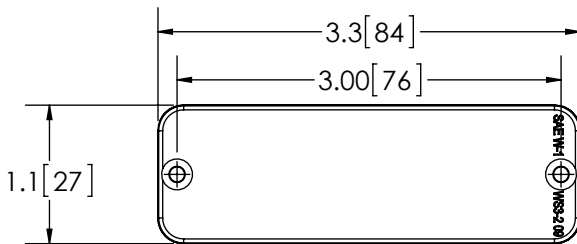


REVISION HISTORY		
REV.	DESCRIPTION	DATE
C	REVISE PER P10009	2011-05-24
D	REVISED	2011-05-24
E	REVISE PER P12035	2014-02-21

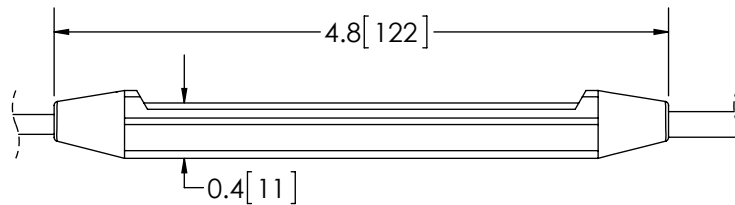
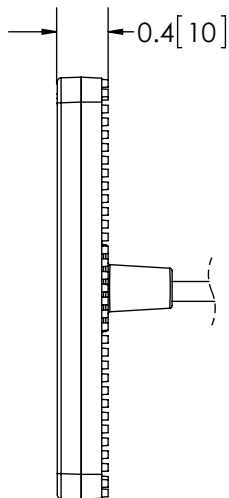


SPECIFICATIONS

- CERTIFICATIONS: **CE**; ECE R10; SAE J595 (NOV2008) Class 1; CA Title 13 Class B (Amber, Red, Blue); IP67
 Note: Unique components, accessories, and hardware kits are not typically included in the Product Certification Test Protocols. Unless otherwise Specified, the Product Certifications referred to herein are predicated upon the base product model configuration.
- FLASH MODE: QUAD : 75 ± 5 FLASHES PER MINUTE
 DOUBLE : 75 ± 5 FLASHES PER MINUTE
 TRIPLE : 92 ± 5 FLASHES PER MINUTE
- VOLTAGE (NOMINAL): 12 to 24 VDC
- VOLTAGE (EXTREME): 9.0 to 32 VDC
- CURRENT (PEAK): 0.70A (@ 12 VDC NOMINAL)
- POWER (MAXIMUM): 10.8W (@ 12 VDC NOMINAL)
- TEMPERATURE RANGE: -22°F (-30°C) TO 122°F (50°C)
- CONNECTION: 4-22 AWG WIRES
- MOUNTING: SURFACE MOUNT USING TWO # 4 SCREWS
- BASE MATERIAL: ZINC, POWDER COAT
- LENS MATERIAL: POLYCARBONATE
- PRODUCT WEIGHT: 0.5 LBS (0.23 Kg)



COLOR CHART	
FGS P/N	COLOR
3510A	AMBER
3510B	BLUE
3510C	CLEAR
3510G	GREEN
3510R	RED



- NOTES:
 1. ROHS COMPLIANT
 2. DIMENSIONS IN INCHES [MILLIMETERS (FOR REFERENCE)]

SCALE 1:1.5		APPROVALS	DATE
CAD GENERATED DRAWING DO NOT MANUALLY UPDATE. MODEL REFERENCED: B		DRAWN BY BND	2014-01-31
		CHECKED MDH	2014-02-13
TOLERANCES ARE IN INCHES, AND MILLIMETERS TOLERANCES ARE:		MECH. ENG.	
MILLIMETERS DECIMALS XX. ± 1.0mm XX.X ± 0.5mm	INCHES DECIMALS X.X ± 0.1 X.XX ± 0.04 X.XXX ± 0.02	ELEC. ENG.	
	ANGLES ± 0.5° FRACTIONS ± 1/64	TEST ENG.	
		SALES. GLB	2014-02-19
NON DISCLOSURE AGREEMENT		Electronic Controls Co. 833 West Diamond Street, Boise, ID 83705 800-635-5900 www.eccolink.com	
		LOW PROFILE, 24 LED, DIR. LIGHT, 12-24V	
		CUSTOMER PART NO. SEE CHART	PRODUCT SERIES: 3510
		SIZE: A	DWG. NO. 3510X
		REV. E	
THIRD ANGLE PROJECTION		Electronically Controlled Use Latest Copy	
		SHEET 1 OF 1	Project: 09008 Date Created: 2009-04-20