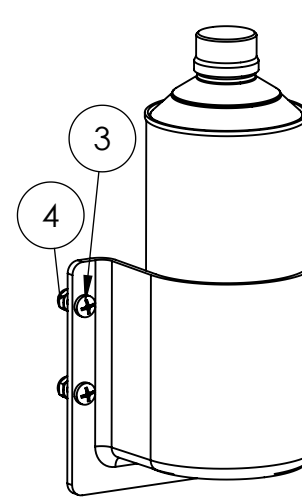
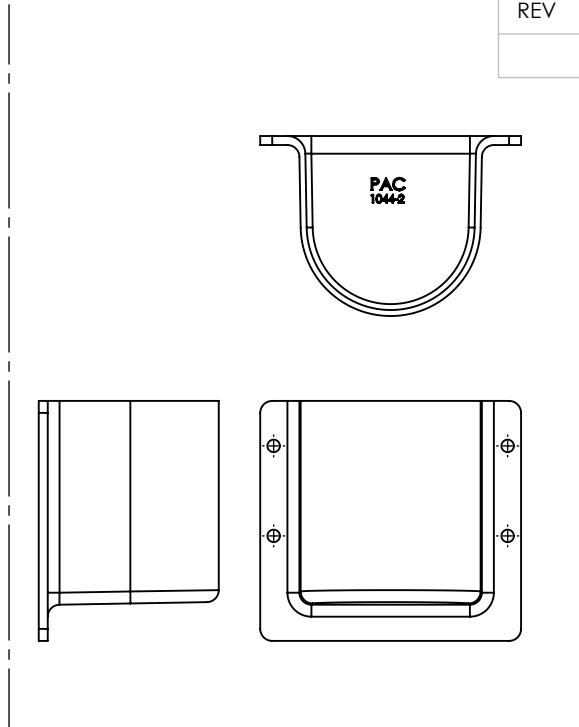
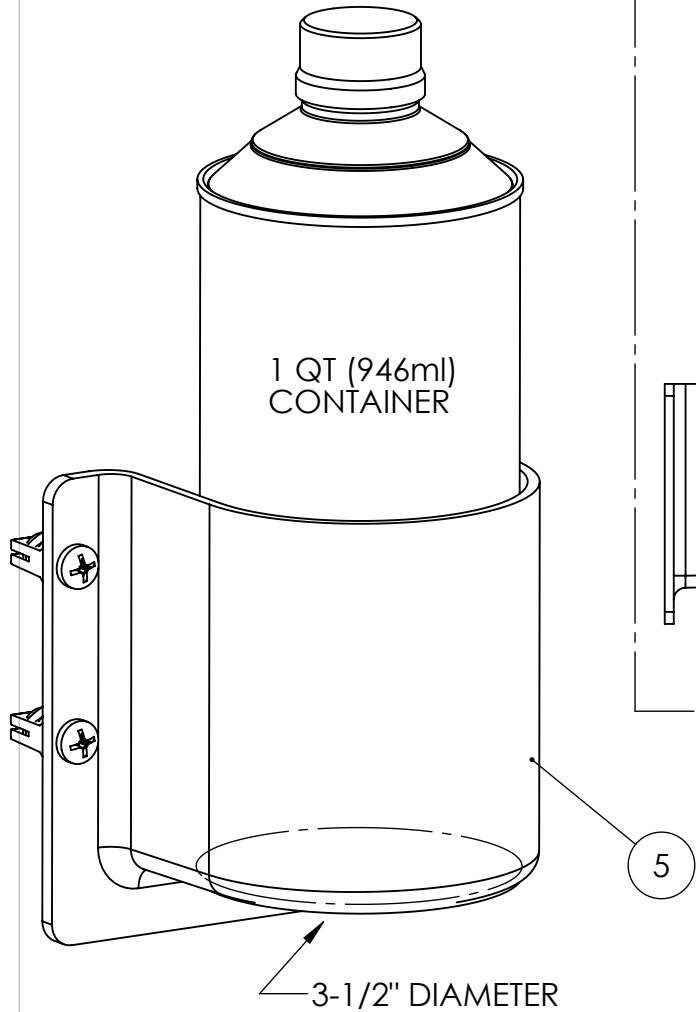
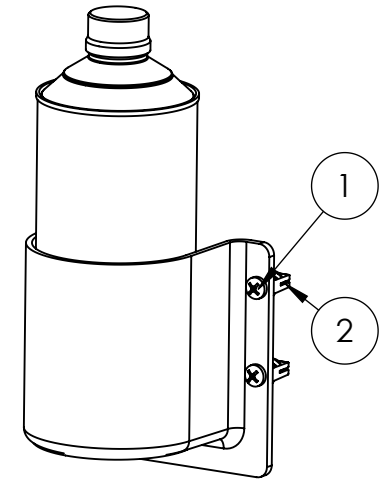


REV	DESCRIPTION	DATE	APPR
-----	-------------	------	------



STD. MOUNTING



PAC TRAC MOUNTING

5	1044-2P	3-1/2" DIA. CYLINDER MOUNT	1
4	2069LN	1/4-20 NYLON LOCK NUT	4
3	2098	14-20 X 34 PHIL PANHEAD	4
2	7016	TRAC LOK INSERT	4
1	2049	#10-24 X 3/4 PAN HEAD SCREW	4
ITEM NO.	PAC P/N	PART NAME	QTY.

NOTES:

MAX DIAMETER : 3-1/2"

_____ LB (KG) CAPACITY

PAC TRAC COMPATIBLE

CHEMICAL RESISTANT MATERIAL

FLAME RETARDANT

PERFORMANCE
ADVANTAGE
COMPANY



TOLERANCES UNLESS OTHERWISE SPECIFIED

.X = ± .03
.XX = ± .010
.XXX = ± .005
.XXXX = ± 0.0005
ANGLES ± 0.5 °
FRACTIONAL ± 1/64

THIRD ANGLE PROJECTION



COLOR

	NAME	DATE
DRAWN BY		
APPR. BY		
MFG BY		
MFG. P/N		
ENG APPR.		
MATERIAL		
ALT. MATERIAL		
FINISH		

THE INFORMATION CONTAINED IN THIS DRAWING IS THE SOLE PROPERTY OF PERFORMANCE ADVANTAGE CO. ANY REPRODUCTION IN PART OR AS A WHOLE WITHOUT THE WRITTEN PERMISSION OF PERFORMANCE ADVANTAGE CO. IS PROHIBITED.

TITLE:

**3-1/2" CYLINDER MOUNT
MEDIUM**

PART NUMBER

1044-2

REV

SCALE: 1:4

SHEET 1 OF 1