



PRODUCT DATA SHEET

P/N: 1009 TOOL HANGER



The Tool Hanger is designed to be a simple hanger solution for shovels, brooms and many other T-shaped equipment.

FEATURES

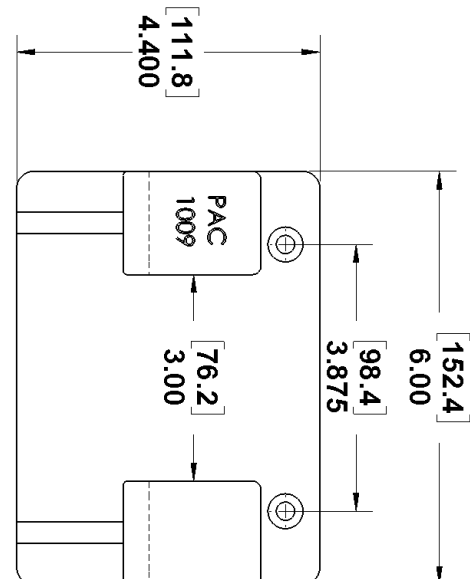
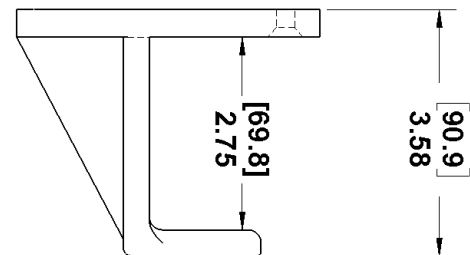
- Heavy duty construction
- Rugged injection molded components made from high quality materials
- Mounts hanging handled tools
- Easy to use
- Weather, UV resistant
- Non-conductive
- Mounts to PAC tool boards and other flat surfaces

TYPICAL SPECIFICATION

Mounting Bracket shall be PAC PN 1009.

Bracket shall be single piece construction; made from tough, corrosion free material. Hardware shall be stainless steel.

Firefighters shall be protected from conductivity.



SPECIFICATIONS

P/N	WT.	MAX LOAD	GRIP RANGE	HANGER RANGE	FLAME TOXICITY CHEMICAL
1009	.8lbs	N/A	N/A	UP TO 2-3/4"	N/A

Performance Advantage Company

Lancaster, New York

www.pactoolmounts.com

888-514-0083

REFERENCE	QTY	REMARKS	PROJECT
			LOCATION
			BUYER
			DEALER
			BUILDER
			SUBMITTED BY: _____ DATE: _____



The **TOOL HANGER** is designed to be a simple hanger bracket for shovels, brooms, and many other T-shaped equipment. Tool Hangers work best when combined with Handlelok brackets – included in the Tool Hanger Kit (P/N K5009).

- Rugged injection molded components made from high quality materials
- Weather, UV resistant
- Non-conductive

