



CLUTCH PUMP KIT

KIT NUMBER: 700595
PART/CUMMINS 6.7L
DEWEZE HYDRAULICS

Ram, Cummins 6.7L:D, 2019+, A/C, PH14 Pump: 5 - 17GPM

BOLT PACKAGES:

BRACKET	716260 (Inc. items 10-12, 14, 16, 19)	702177	BELT DIAGRAM
IDLER PULLEY	None		
CRANK PULLEY	None		
TENSIONER	None		
FAN SPACER	None	6-11-13	ISSUE DATE
		NC	2/19/19
			REVISION DATE

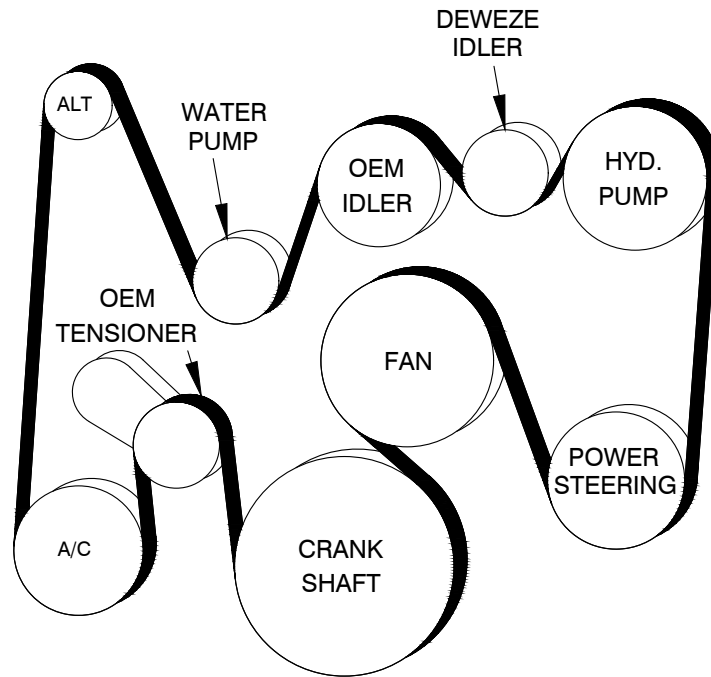
Item | Part No. | Description

1.	716169	Pump plate	12.	102083	Clamp, .25 ID x 75 wide
2.	716259	Idler mount bracket	13.	OEM	Coolant hose clamp
3.	716158	Coolant hose bracket	14.	112072	M10 x 1.5 x 40 Flange bolt
4.	-----	-----	15.	-----	-----
5.	-----	-----	16.	110923	M8 x 1.25 x 40 Flange bolt
6.	-----	-----	17.	-----	-----
7.	740151	Idler pulley, DewEze	18.	-----	-----
8.	*	Pump	19.	112071	M8 x 1.25 x 50 Flange bolt
9.	742009	Clutch	20.	110437	3/8-16 x 3/4 Flange bolt
10.	112073	M6 x 1.0 x 16 Flange bolt	21.	740459	Belt, Micro-V K081352
11.	112074	M6 x 1.0 Flange nut			

*Part number to be determined at time of order.

FIG. 1

BELT DIAGRAM



harperindustries.com



FIG. 2

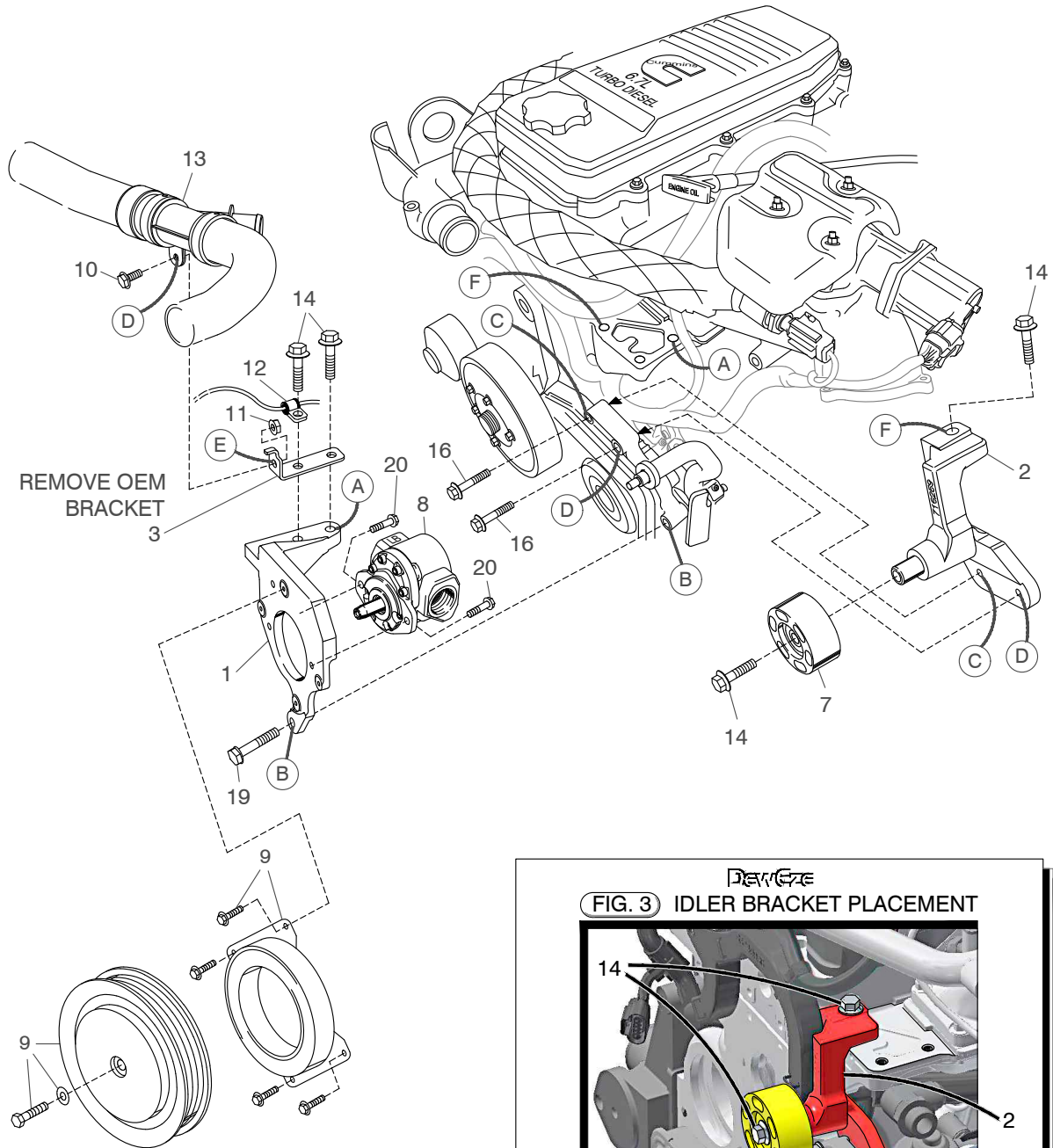
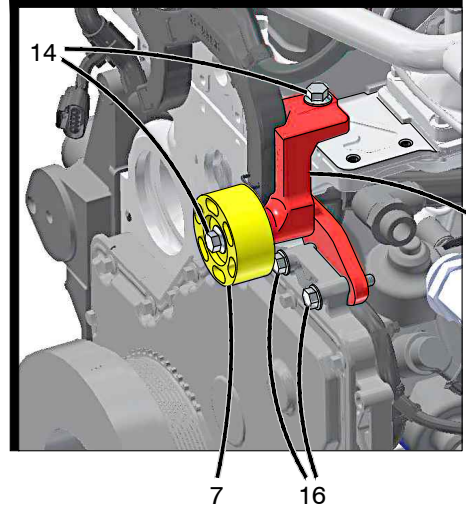


FIG. 3 IDLER BRACKET PLACEMENT



DewEze Clutch Pump Kit 700595

Cummins 6.7L, 2019+, PH14 Pump: 5-17 GPM

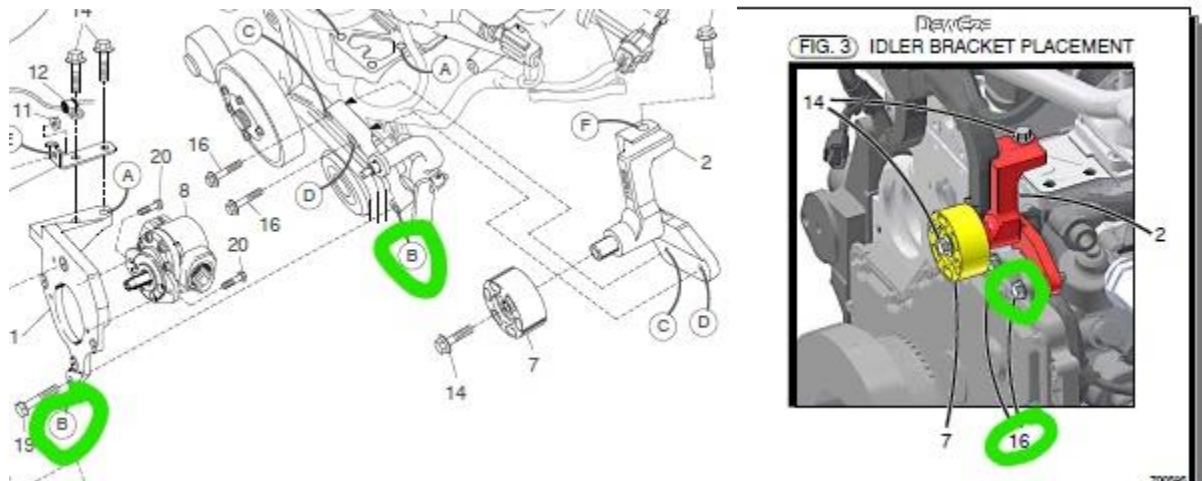
INSTALLATION INSTRUCTIONS

Record Pump Model No. _____ and Serial No. _____ for future reference.

Left and right directions are standing in front of the truck looking at the engine.

- The installation of this kit requires trained decision-making concerning clearances, tying components together, rerouting, or relocating OEM components, etc. It is impossible to describe all of the clearance and vibration points, etc. in the installation instructions. Therefore, the technician must exercise professional judgment to achieve the best quality installation.***
- If truck comes equipped with dual alternators the truck must first be reprogrammed at the dealer for single alternator operation. The secondary alternator located in the place of installation for the clutch pump must be removed; disconnected wires and cables must be sealed, covered or removed. The alternator bracket attached to the engine at Location A in Fig. 2 must also be removed. Proceed with installation as instructed.
- Disconnect the battery.
- Remove the OEM belt.
- Remove the OEM coolant hose bracket (similar to DewEze item 3).
- Install idler bracket (2) at Location C and D on the engine front cover with two M8 x 40 flange bolts (16) and an M10 x 40 flange bolt (14) at Location F. **Snug all bolts lightly. Tighten the two M8 x 40 bolts (16) first, then tighten the M10 x 40 bolt (14).** Install the idler (7) onto the idler mounting bracket with an M10 x 40 flange bolt (14).
- Install DewEze belt (21) on the OEM pulleys. It is easier to access the pulleys before the pump is installed.
- Bolt pump (8) onto pump plate (1) with two 3/8 x 3/4 flange bolts (20).
- Run the hoses into the engine compartment. Pull them out far enough to attach them to the pump.
- Place the new coolant hose bracket (3) on top of the two holes on the pump bracket (1) at Location A, and the small wire clamp (12) with the clutch wire run through it on top of that on the front hole.
- Attach the top of the pump bracket (1) to the engine at Location A using two M10 x 40 bolts (14). Attach the bottom of the pump bracket to the power steering bracket at Location B with the M8 x 50 bolt (19). **Snug all bolts lightly. Tighten the M8 x 50 bolt (19) first, then tighten the two M10 x 40 bolts (14).**
- Attach coil (9) with four 1/4 x 1/2 flange bolts. Torque these to 6 ft-lb. Attach clutch pulley (9) to pump shaft with 5/16NF x 1 1/4 bolt and heavy washer. Torque to 14 ft-lb.
- Attach the OEM coolant hose clamp (13) to the DewEze clamp bracket (3) with the M6 x 16 bolt (10) and the M6 nut (11) at Location E.
- Finish installing the belt (21) onto the pump pulley as shown in the diagram (Fig. 1).
- Install air box. Install intercooler cover. Connect battery.
- Run the engine and check for any clearance or alignment problems.

700595, Kit, Dodge Ram, Cummins, 6.7L:D, 2019+, PH14



Additional Install Instructions for the 700595 Kit.

1-716169, Bracket, Pump Cummins 6.7, A Pump

2-716259, Bracket, Idler Mount, Ram 6.7L:D

Install the Idler Bracket,

Start the two Bolts, M8-1.25 X 40 Flange HD, (#16 Horizontal bolts) tighten finger tight.

Start the Bolt, M10-1.5 X 40, Flange HD, (#14 Vertical Bolt), tighten finger tight.

Torque horizontal bolts tight

Torque vertical bolts tight

(Important !!) tighten the horizontal bolts first.

Install the Pump Bracket

Start the M8-1.25 X 50 Flange HD, (#19 Horizontal bolt), tighten finger tight.

Start the Two M10-1.5 X 40, Flange HD, (#14 Vertical Bolts), tighten finger tight.

Torque horizontal bolts tight

Torque vertical bolts tight

(Important !!) tighten the horizontal bolt first.

In the event everything is already installed, and there is a belt noise (Chirp).
Generally, there is an alignment issue.

Repair Procedure for Bracket Alignment Issues:

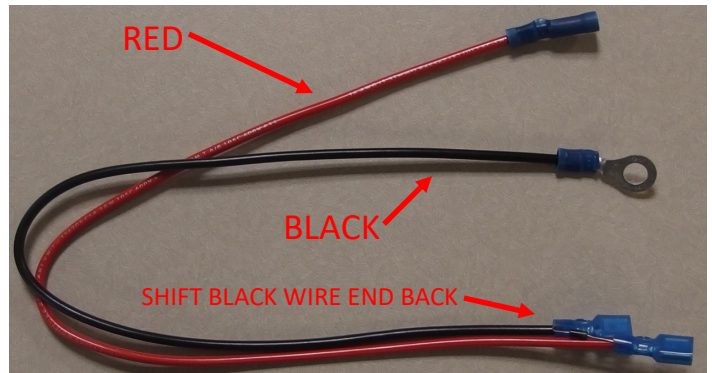
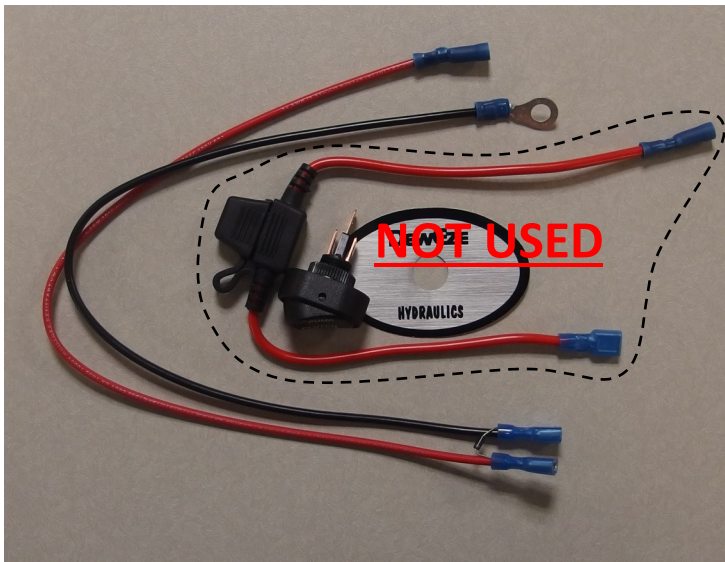
Remove the Belt, Loosen the three Idler bracket bolts, Loosen the three Pump bracket bolts Let the brackets relax, then follow the above Instructions to Tighten the horizontal bolts first.

***** Required: A New Belt Must Be Installed***** If the belt is not replaced after the brackets are realigned, the Belt Noise Will Not go Away.

DewEze Hydraulics Clutch Pump Kit Hot Fix

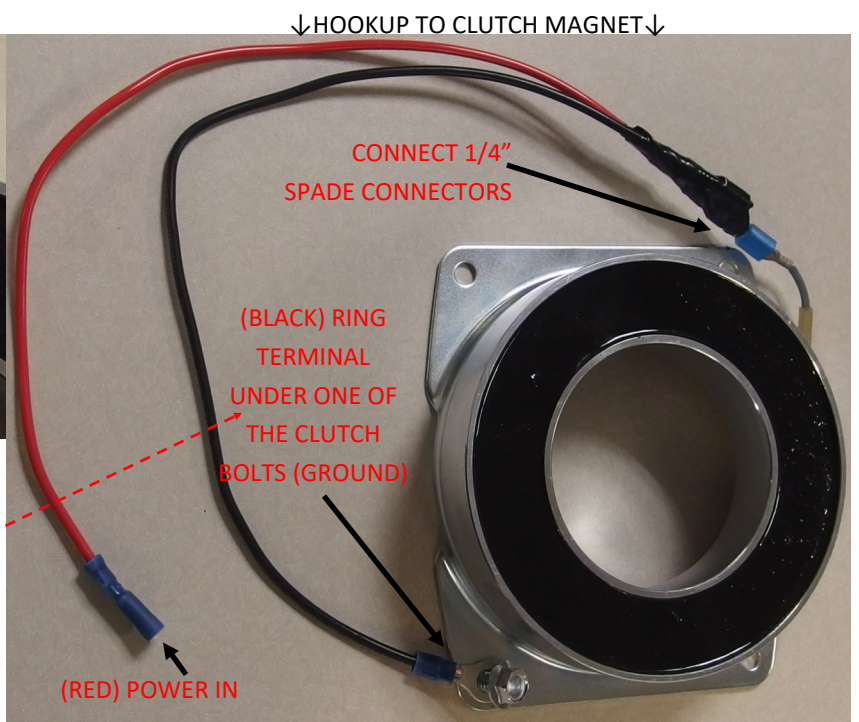
2019 Ram Model Trucks Requiring Diode Protection on Clutch Wire

Use Of CPK Switch Kit To Fulfill Clutch Diode Protection Requirement



Portions of the switch Kit supplied with all DewEze clutch pump kits may be used to provide diode suppression for the A pump clutch magnet as required by Ram trucks in the 2019 Model Year. The harness portion (above right) uses a diode to protect the light in the supplied switch; if the switch kit is not used, the harness can be used to provide diode protection for the engine controller on 2019 Ram Trucks.

Use of an added relay to control the clutch supply power will eliminate need to install diode protection, assuming power for clutch is run through relay, and Ram circuit is only used to control relay



Note: DO NOT install ring terminal between pump bracket and magnet body
CLUTCH FAILURE WILL RESULT