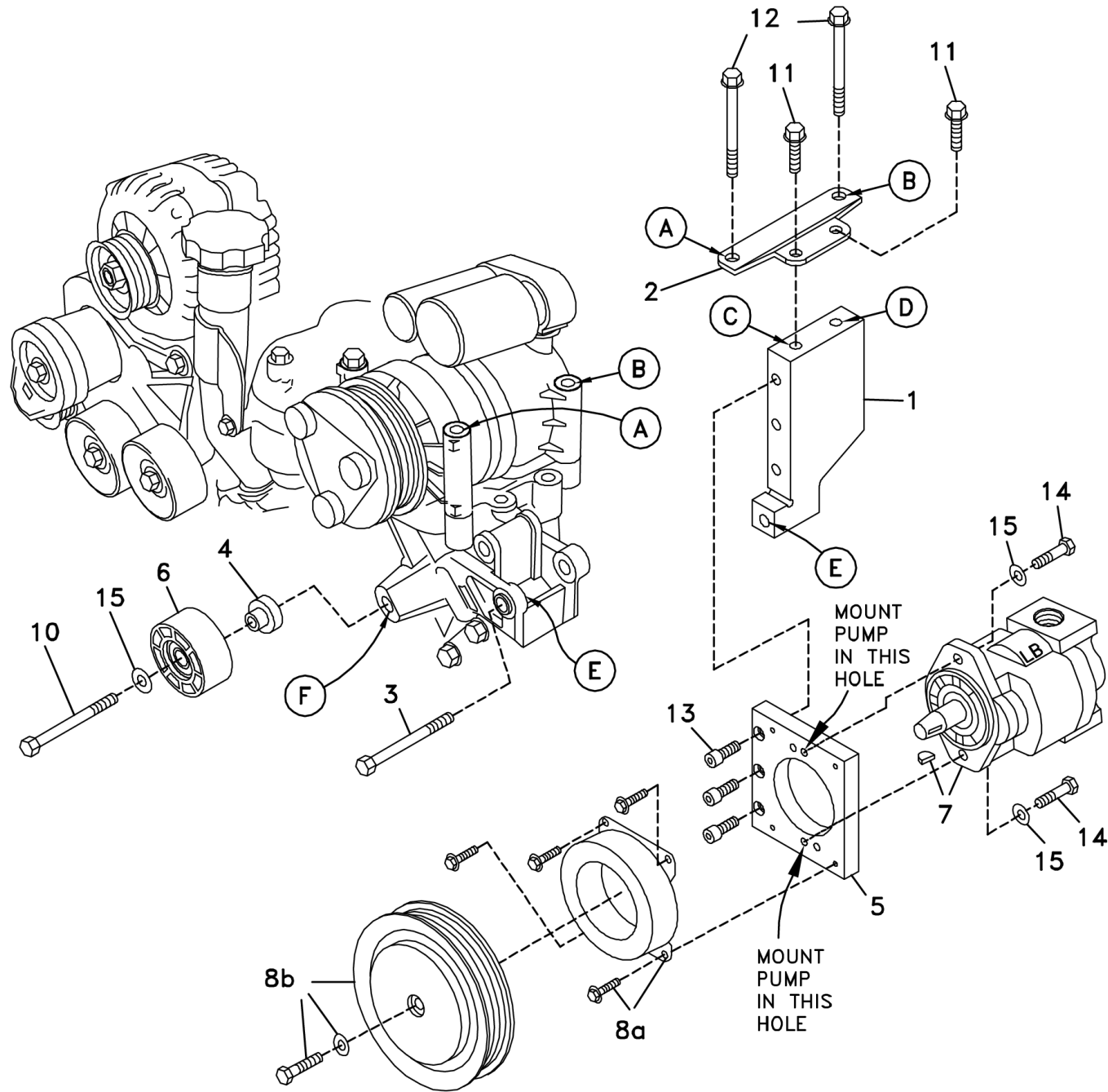


///HARPER INDUSTRIES, INC.

700423

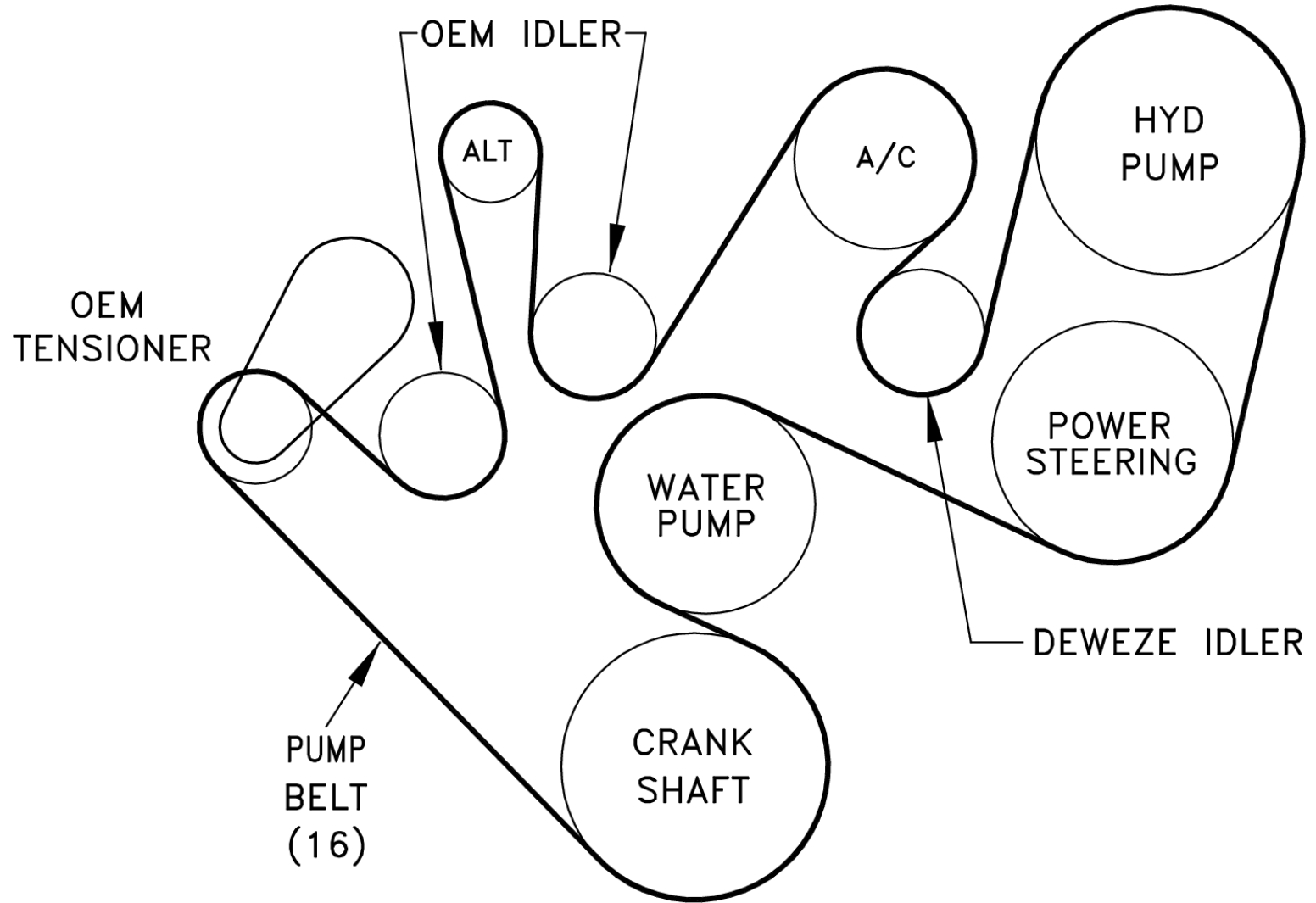
Images and 2D Drawings



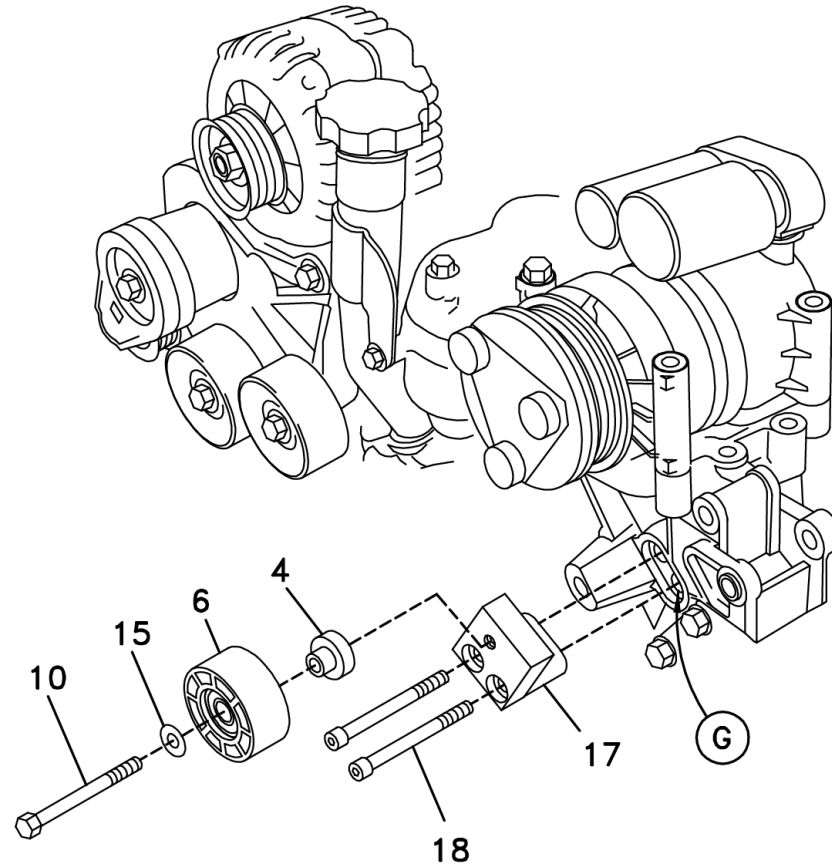


A, B, C... Denotes bolt holes in engine to locate corresponding holes in Pump Brkt.

BELT DIAGRAM



SUPPLEMENTAL INSTRUCTIONS FOR KIT SUPPLIED WITH 1380K6 (138") BELT



Attach the idler bracket (17) to the engine with two M10 x 110 socket head bolts (18) at Location G. Push the idler bushing (4) into the back (the side without the snap ring) of the idler pulley (6). Insert the M10 x 50 bolt (10) through a 3/8 flat washer (15), through the idler pulley and bushing and into the hole on the air conditioner bracket at location F. Thread the M10 lock nut (12) onto bolt (10). Torque to 25 ft-lb.

Assembly Details:

Assembly Number: '700423'

Assembly Description: Clutch Pump Kit

Item	Assembly	Part Number	Description	Quantity	UOM	Order Multiple
7.2	No	720203	Pump 5gpm A Mount Parker P315 326-9110-236 Side Port S16mb P12mb	1	EA	1
16.2	No	740266	Serpentine Belt 6 Rib 138.0"	1	EA	1
16.1	No	740359	Serpentine Belt 6 Rib 142.0"	1	EA	1
7.1	No	720200	Pump 7gpm A Mount Parker P315 326-9110-226 Side Port S16mb P12mb	1	EA	1
1	No	711579	Engine Bracket	1	EA	1
2	No	711578	Engine Bracket Gusset	1	EA	1
3	No	110567	Bolt M10-1.5 X 80 HHCS Gr 10.9 Plain	1	EA	1
4	No	711009	Idler Bushing .668 X .438 X 1.12	1	EA	1
5	No	710936	Pump Mount Plate	1	EA	1
6	No	740151	Idler Assy 3" Flat	1	EA	1
8	No	740144	Clutch Assy 6 Groove A Mount Tapered 6" Warner 1417-11 12VDC	1	EA	1
10	No	110210	Bolt M10-1.5 X 50 HHCS Gr 10.9 Zinc	1	EA	1
11	No	110437	Bolt 3/8-16 X .75 Wiz Flange Gr 5 Zinc	1	EA	1
13	No	110465	Bolt 3/8-16 X 1.25 SHCS Plain	1	EA	1
14	No	110425	Bolt 3/8-16 X 1.25 HHCS Gr 5 Zinc	1	EA	1
15	No	110676	Washer 3/8" Flat Zinc	1	EA	1
16	No	740266*	Serpentine Belt	1	EA	1
17	No	711582	Idler Bracket	1	EA	1
18	No	110171	Bolt M10-1.5 X 110 SHCS Gr 10.9 Plain	1	EA	1