

SnowDogg® Snowplow Headlight Adapter INSTALLATION INSTRUCTIONS

16071020

FORD SUPERDUTY 2017+ LED
 BREAKOUT CONNECTOR (16 PIN)

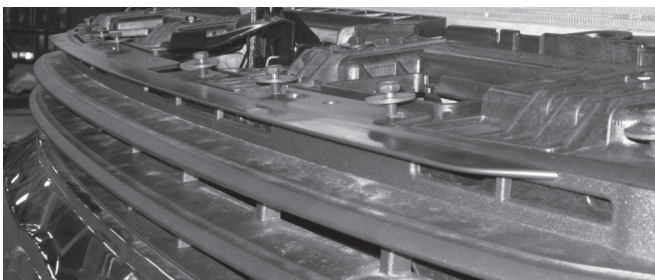
NOTE: THIS HARNESS IS ONLY FOR THE LED LIGHTING SYSTEM

When the plow is connected and a headlight is activated this relay kit blocks the truck light signal and uses battery to power the plow lights per Ford's recommendation. When the plow is connected and headlights are not active – the relays do not energize.

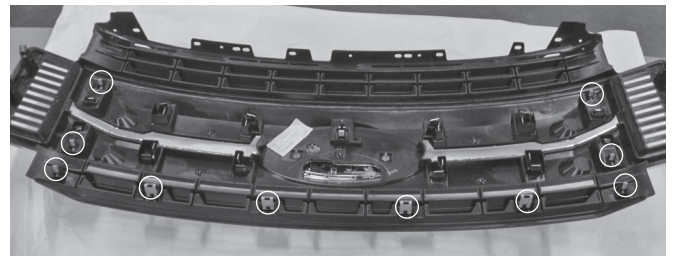
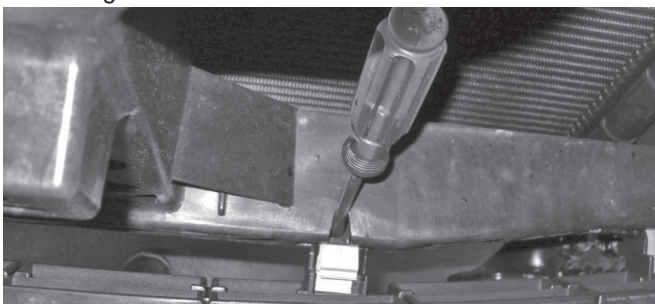
This installation does not require any modification or splicing into truck oem wiring but does require tapping into wires in the 16160100 relay harness.

INSTRUCTIONS

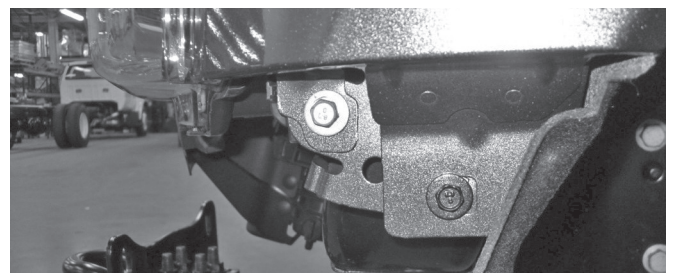
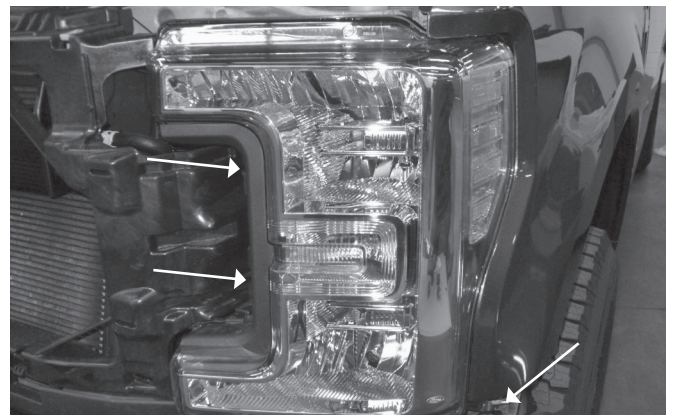
1. Check all light functionality before working on the truck.
2. Remove the bumper
3. Remove the plastic guard and the fasteners securing the grill.



4. Remove the grill – the grill is secured with clips – the 4 lower clips must be released as shown below. No screws are used to secure the grill.



5. Unfasten the headlights – there are four fasteners located as shown below. Secure the headlights so they do not fall.

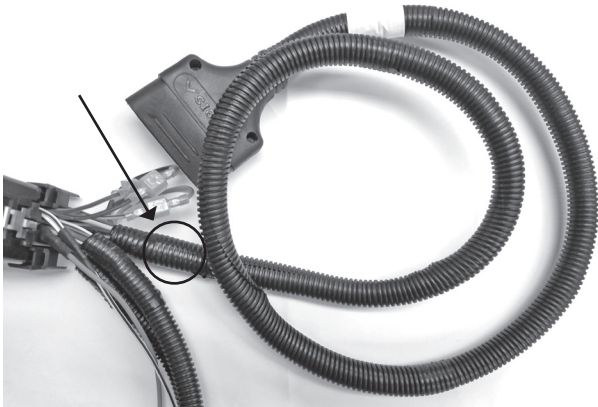


ADAPTER INSTALLATION

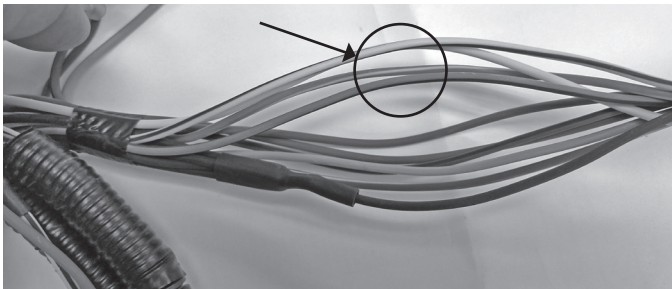
6. Disconnect the FORD 16 pin breakout connector in both PS and DS light harnesses
7. Install the 16071020 light adapters into the harness on both sides. Ensure that all connections are secure.
8. Connect the 16071020 light adapters to the 16160100 RELAY HARNESS

RELAY KIT INSTALLATION

9. The 16071020 RELAY KIT is installed into the harness going between the GRILL CONNECTOR and the 16160100 harness RELAY MODULE.



10. Pull the sheathing back on the harness away from the relay module and find the 2x GREEN and 2x YELLOW wires.



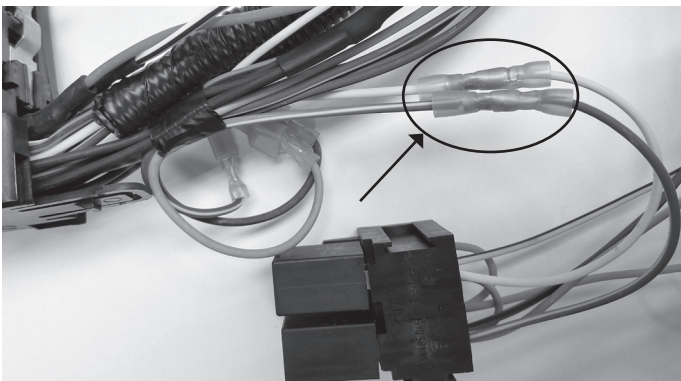
11. Cut all 4 wires

12. Tape off the GREEN/BLK and YEL/BLK wires coming from the 16160100 RELAY MODULE – **they will not be used.**

13. Strip the remaining 6 wires to expose approximately 3/8" of bare wire.

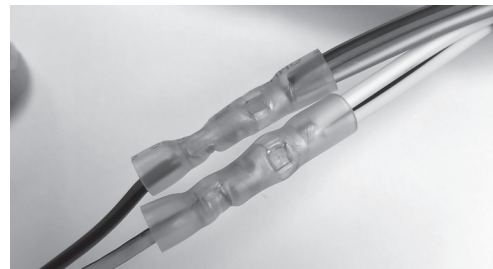
14. Connect the single GREEN/WHITE wire coming from the RELAY MODULE to the GREEN/WHITE or SOLID GREEN wire with butt connector from the RELAY KIT

15. Connect the single YELLOW/WHITE wire coming from the RELAY MODULE to the YELLOW/WHITE or SOLID YELLOW wire with butt connector from the RELAY KIT



16. Connect the YELLOW/WHITE and YELLOW/BLK wires going to the GRILL CONNECTOR to the YELLOW/BLK wire from the RELAY KIT

17. Connect the GREEN/WHITE and GREEN/BLK wires going to the GRILL CONNECTOR to the GREEN/BLK wire from the RELAY KIT



The butt connectors are heat shrink style – so using a torch or hot air gun, shrink the connectors.

18. Connect the GRAY or BLACK wire from the RELAY KIT to a suitable GROUND

19. Connect the ORANGE wire from the RELAY KIT to a FUSED 20A POWER. This can be battery power – it does not need to be ignition switched but it **MUST BE FUSED.** **If the RELAY KIT has an inline use, battery power may be used.**

20. Check all light functionality – both with and without the plow lights connected.