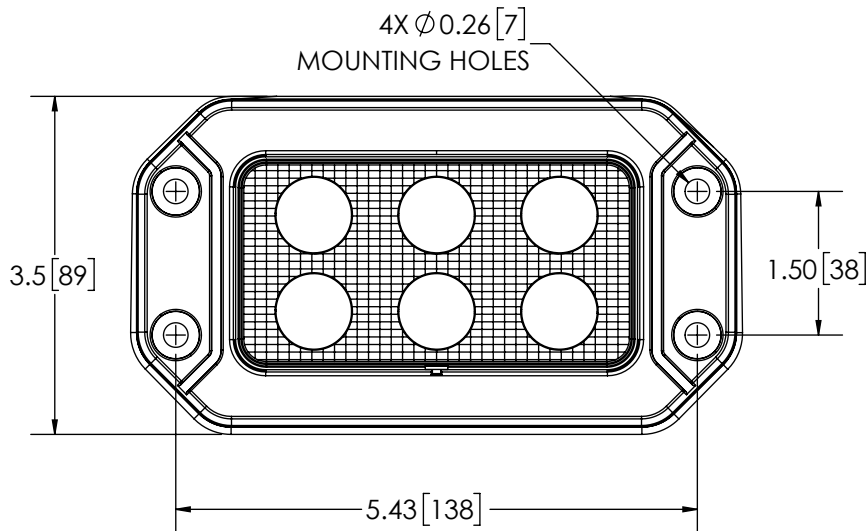
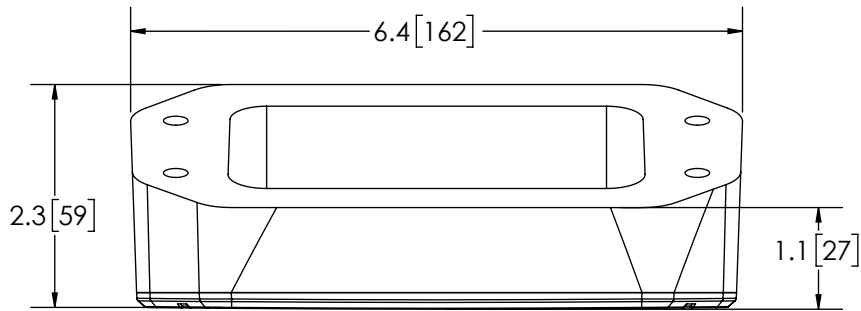


REVISION HISTORY		
REV.	DESCRIPTION	DATE
02	REVISED PER EL0077	2017-01-12
03	REVISED PER EL0077	2017-01-23
A	INITIAL RELEASE PER EL0077	2017-01-27




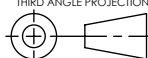
**SPECIFICATIONS**

- CERTIFICATIONS: **CE**; C-Tick ; IP67  
 Note: Unique components, accessories, and hardware kits are not typically Included in the Product Certification Test Protocols. Unless otherwise Specified, the Product Certifications referred to herein are predicated upon the base product model configuration.
- RAW LUMENS: 845 lumens
- EFFECTIVE LUMENS: 809 lumens
- ILLUMINANCE: 2.9 lux
- PEAK BEAM INTENSITY: 2737 Candela
- EFFICACY: 99.9 lm/W
- CORRELATED COLOR TEMPERATURE: 6596K
- VOLTAGE (NOMINAL): 12 to 24 VDC
- VOLTAGE (EXTREME): 9.0 to 32.0 VDC
- CURRENT (PEAK): 1.08A (@ 12 VDC NOMINAL)
- POWER (MAXIMUM): 13.8W (@ 12 VDC NOMINAL)
- TEMPERATURE RANGE: -22°F (-30°C) TO 122°F (50°C)
- CONNECTION: 2 - 18 AWG WIRE CABLE
- MOUNTING: 4 BOLT
- HOUSING MATERIAL: ALUMINUM
- LENS MATERIAL: POLYCARBONATE
- PRODUCT WEIGHT: 1.5 LBS (0.7 Kg)

MOUNTING DISCLAIMER  
 MOUNTING MEASUREMENT IS FOR REFERENCE ONLY.  
 MEASURE BEFORE DRILLING.

DISCLAIMER  
 DIMENSIONS, ILLUSTRATIONS, SPECIFICATIONS AND CERTIFICATIONS CONTAINED IN THIS DOCUMENT ARE TYPICAL OF THE ACTUAL PRODUCT AND ARE SUBJECT TO CHANGE. ECCO ENGINEERING DOES NOT MAINTAIN FORMAL DESIGN CONTROL OF THIS PRODUCT.

NOTES:  
 1. ROHS COMPLIANT  
 2. DIMENSIONS IN INCHES[MILLIMETERS (FOR REFERENCE)]

SCALE 1:2		APPROVALS	DATE	 <a href="http://www.eccolink.com">www.eccolink.com</a> Americas (800) 635-5900   Europe +44 (0)113 237 5340   Asia Pacific +61 (0)3 63322444
CAD GENERATED DRAWING DO NOT MANUALLY UPDATE. MODEL REFERENCED:01		DRAWN BY	2017-01-23	
TOLERANCES ARE IN INCHES, AND MILLIMETERS TOLERANCES UNLESS OTHERWISE STATED ARE:		CHECKED MDH	2017-01-24	
MILLIMETERS DECIMALS XX. ± 1.0mm XX.X ± 0.5mm		MECH. ENG. KLR	2017-01-23	
INCHES DECIMALS X.X ± 0.1 X.XX ± 0.04 X.XXX ± 0.02		ELEC. ENG. JES	2017-01-24	<b>WORKLAMP, 6 LED, REC, FLOOD, 12-24V, FM, GROM</b> CUSTOMER PART NO. <b>EW2409</b>
ANGLES ± 0.5° FRACTIONS ± 1/64		TEST ENG.		
THIRD ANGLE PROJECTION		SALES. LAT	2017-01-23	SIZE: A
		Electronically Controlled Use Latest Copy		DWG. NO. <b>EW2409</b>
		SHEET 1 OF 1 Project: EL0077		REV. <b>A</b>
		Date Created: 2016-11-28		

THIS DRAWING AND THE DESIGN IT DISCLOSES ARE THE PRIVATE PROPERTY OF ESG AND IS ISSUED IN CONFIDENCE FOR ENGINEERING INFORMATION ONLY. THE DRAWING AND / OR DESIGN MAY NOT BE USED, COPIED, REPRODUCED, OR OTHERWISE DISCLOSED IN PART OR AS A WHOLE TO OUTSIDERS OR USED FOR ANY OTHER PURPOSE WITHOUT THE PRIOR WRITTEN CONSENT OF ESG. THE DRAWING IS SUBJECT TO RECALL AT ANY TIME. YOUR POSSESSION OF THIS DOCUMENT CONSTITUTES ACCEPTANCE OF THESE TERMS. © 2016 ECCO